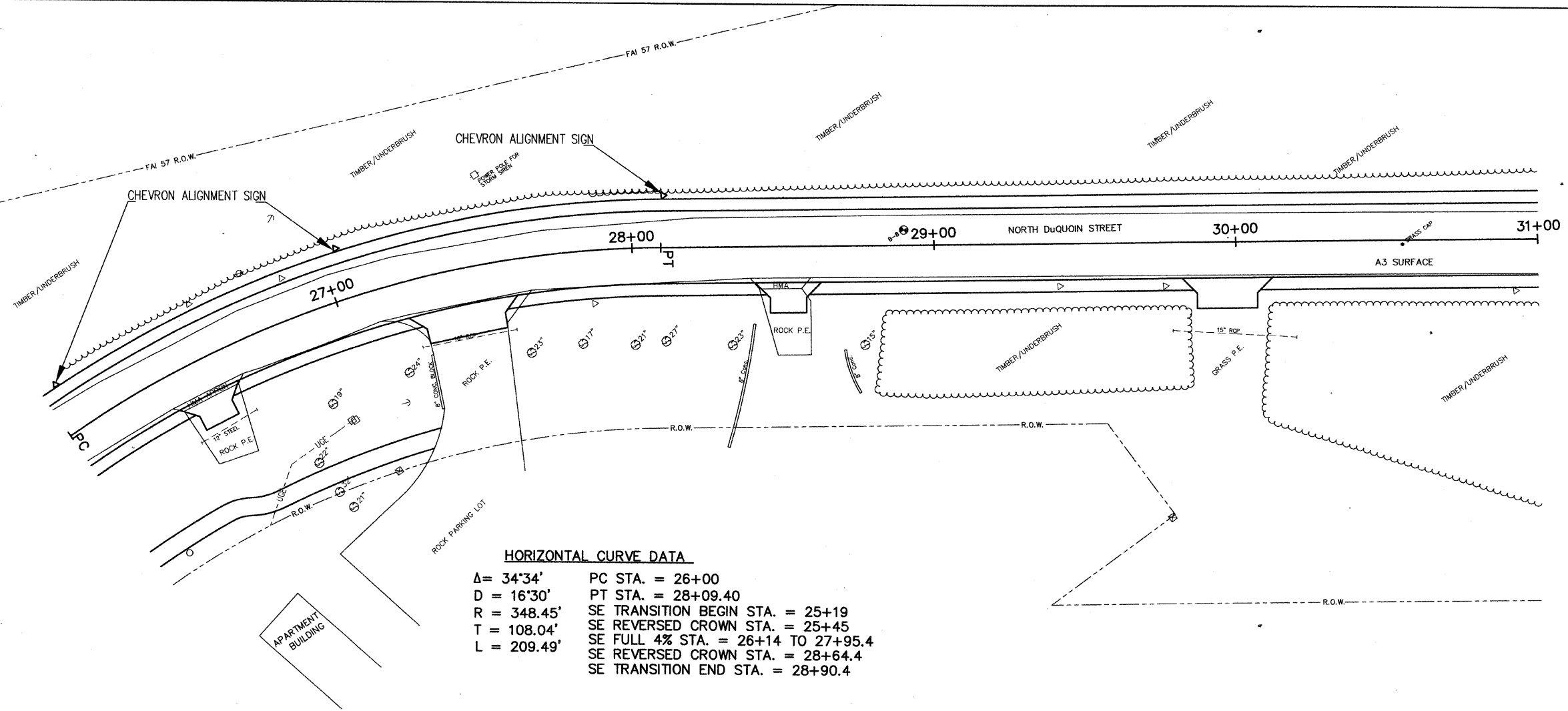
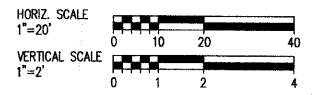


ROUTE	SECTION	COUNTY	TOTAL SHEETS	SHEET NO.
F.A.U. 9452	08-00059-00-RP	FRANKLIN	39	10
NORTH DuQUOIN ST.			CONTRACT NO. 99396	

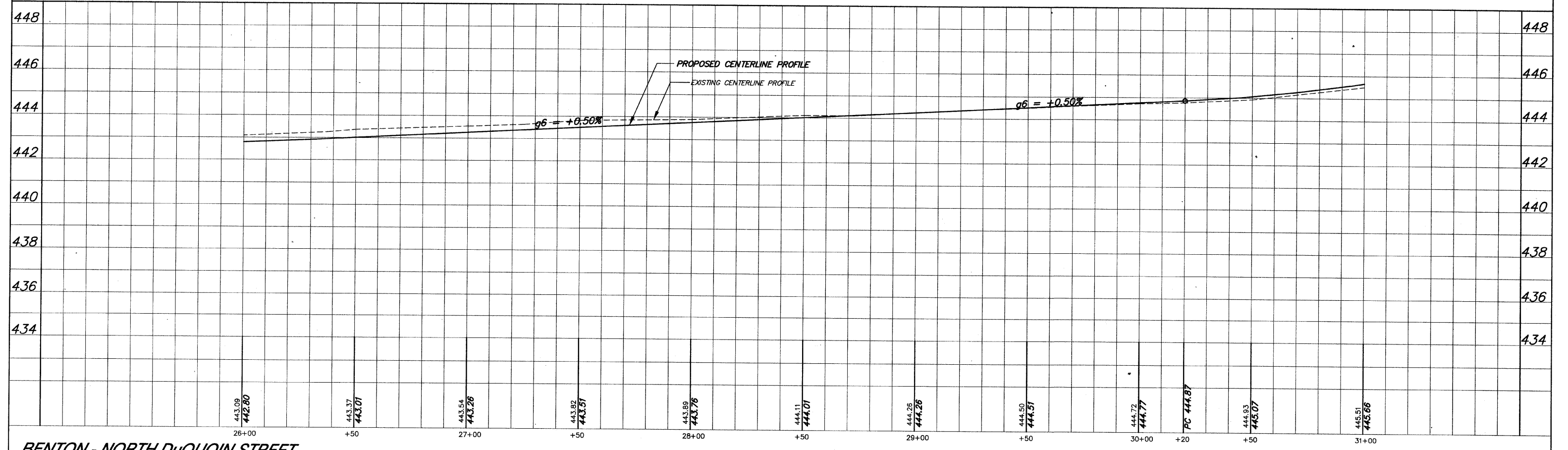


**BENCH MARKS**

**BM8 - EL. 442.65**  
 Mag Nail in W. Side PP/Trans on E. Side  
 DuQuoin St. & 50' N. of Apartments  
 See Pg. 21 Bk. 577

**HORIZONTAL CURVE DATA**

Δ = 34°34'    PC STA. = 26+00  
 D = 16°30'    PT STA. = 28+09.40  
 R = 348.45'    SE TRANSITION BEGIN STA. = 25+19  
 T = 108.04'    SE REVERSED CROWN STA. = 25+45  
 L = 209.49'    SE FULL 4% STA. = 26+14 TO 27+95.4  
                   SE REVERSED CROWN STA. = 28+64.4  
                   SE TRANSITION END STA. = 28+90.4



**BENTON - NORTH DuQUOIN STREET**