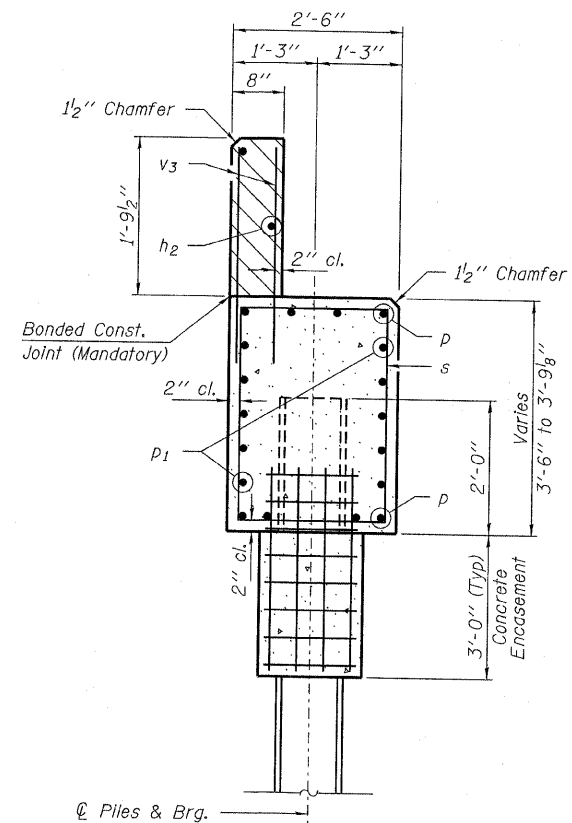
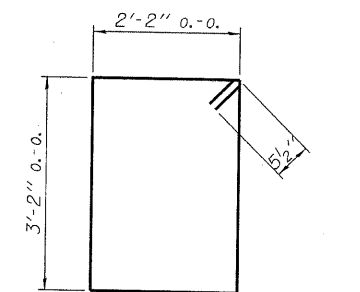


PLAN

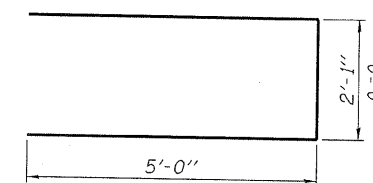


SECTION A-A

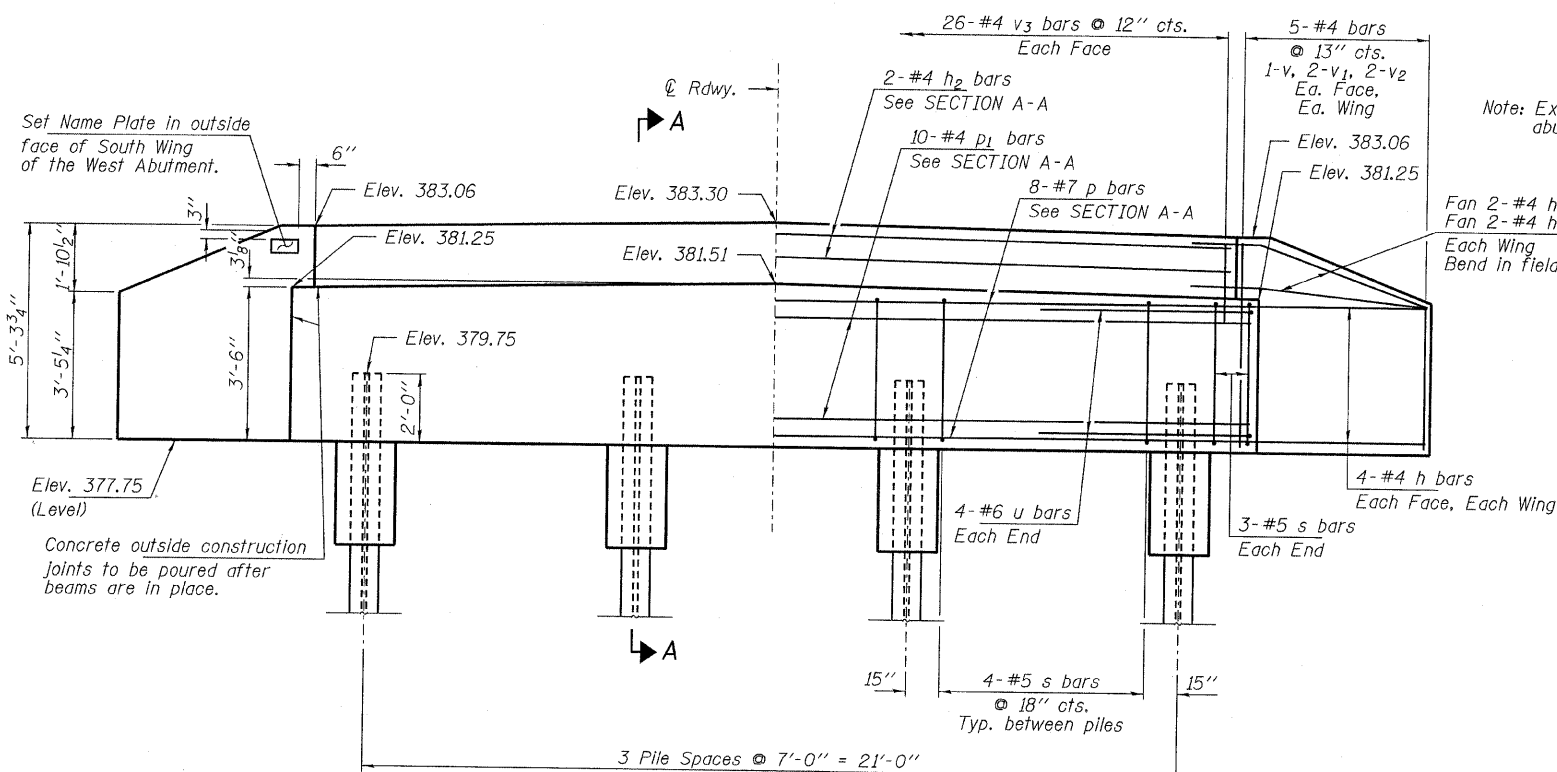
Hatched area to be poured after beams are in place.



BAR s



BAR u



ELEVATION

BILL OF MATERIAL - 2 ABUTS.

BAR	NO.	SIZE	LENGTH	SHAPE
h	40	#4	6'-0"	—
h1	8	#4	4'-6"	—
h2	4	#4	25'-2"	—
p	16	#7	25'-2"	—
p1	20	#4	25'-2"	—
s	36	#5	11'-7"	□
u	16	#6	12'-1"	—
v	8	#4	4'-11"	—
v1	16	#4	4'-3"	—
v2	16	#4	3'-2"	—
v3	104	#4	2'-8"	—
Concrete Structures			Cu. Yd.	22.2
Concrete Encasement			Cu. Yd.	2.8
Reinforcement Bars			Pound	2,430
Steel Piles HPI0x42			Foot	490
Test Pile Steel HPI0x42			Each	1
Name Plates			Each	1

PILE DATA

Type: Steel HPI0x42
 No. Req'd. (2 Abuts.): 8
 Factored Resistance Available (Rf): 167 Kips/Pile
 Nominal Required Bearing (Rn): 335 Kips/Pile
 Est. Length: 70 Ft/Pile

Notes: * Includes one test pile to be driven in permanent locations at the West Abutment.

The Steel H-Piles shall be according to AASHTO M270 Grade 50.

The test piles shall be driven to 110 percent of the Nominal Required Bearing indicated in the pile data information.

DESIGNED - A.S.L.
CHECKED - S.W.M.
DRAWN - D.A.B.
CHECKED - D.T.M.

HAMPTON, LENZINI & RENWICK, INC.
 CIVIL & STRUCTURAL ENGINEERS
 LAND SURVEYORS
 3085 STEVENSON DRIVE, SUITE 201
 SPRINGFIELD, ILLINOIS 62703
 (217) 546-3400

SHEET NO. 6
 9 SHEETS

FAS	SECTION	COUNTY	TOTAL SHEETS	SHEET NO.
890	08-07120-00-BR	WHITE	12	9
HERALDS PRAIRIE ROAD DISTRICT		CONTRACT NO. 99408		
FED. ROAD DIST. NO.		ILLINOIS FED. AID PROJECT BROS-01931042		

ABUTMENTS
 STRUCTURE NO. 097-3267