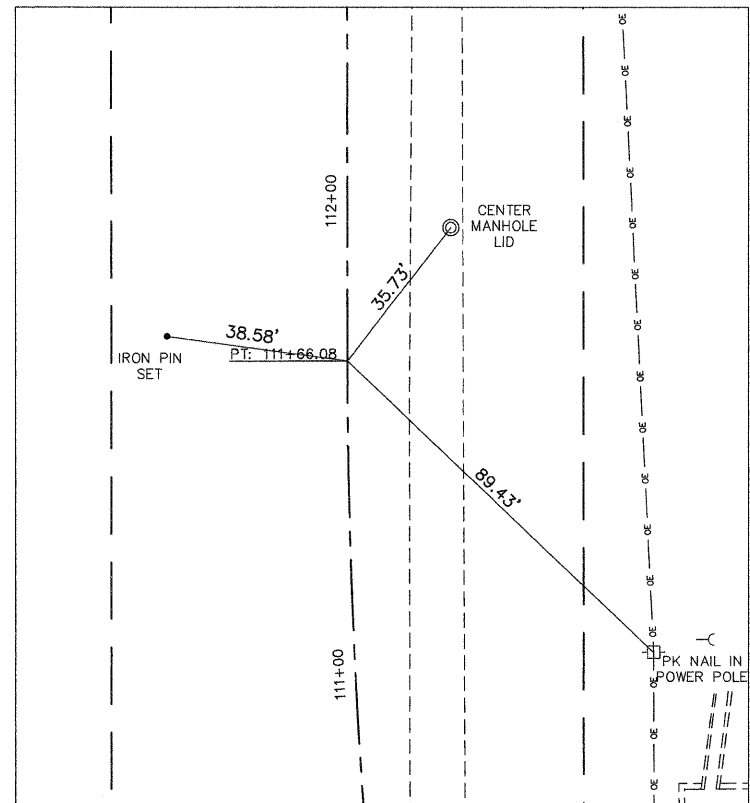
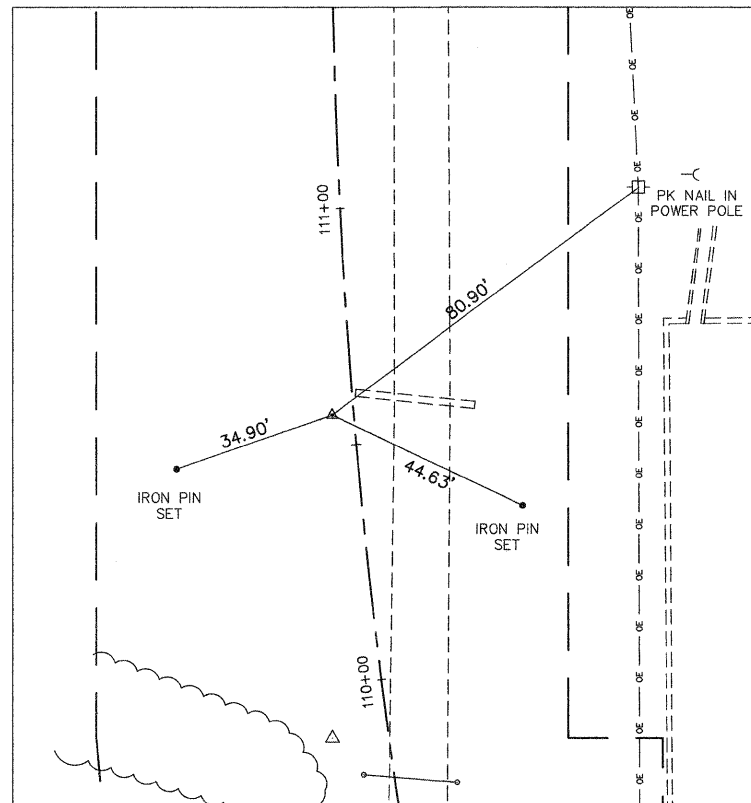


**CONTROL POINT #1**  
DAVIDSON AVENUE  
STA. 107+50.00



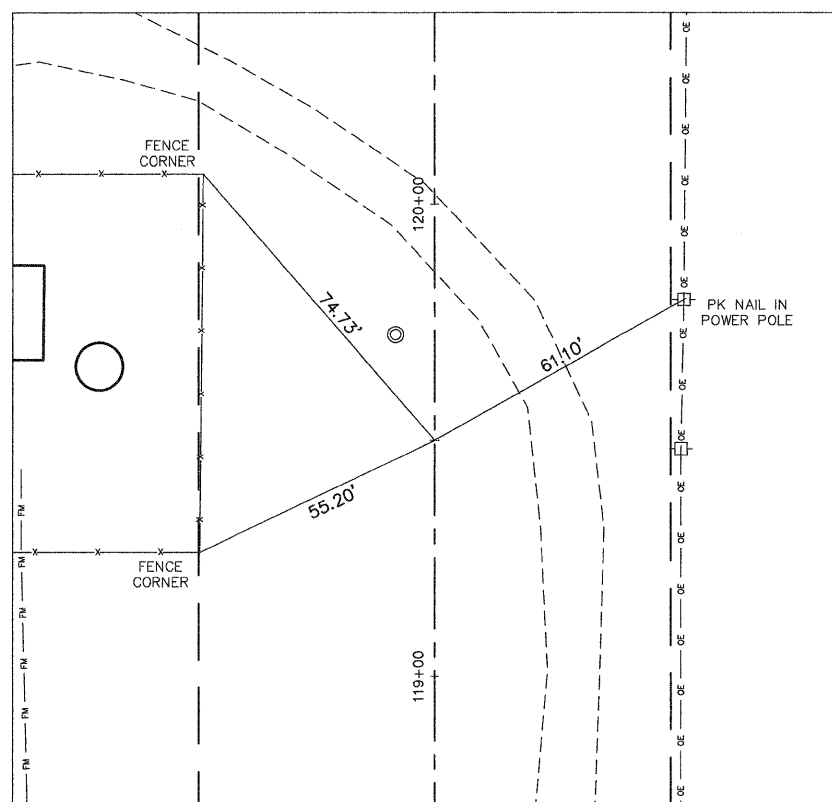
**CONTROL POINT #2**  
DAVIDSON AVENUE  
STA. 111+66.08



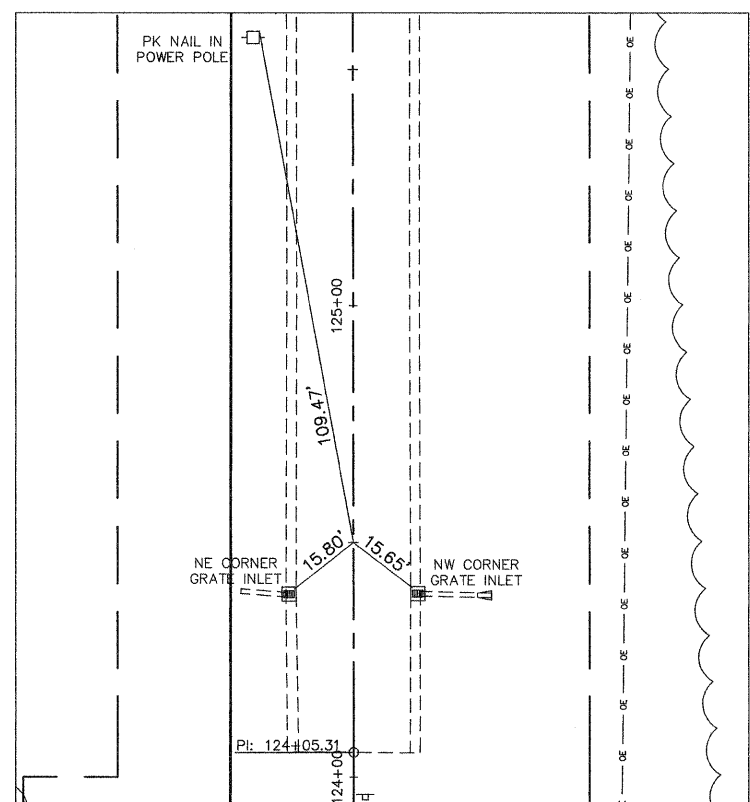
**POINT OF INTERSECTION C-2**  
DAVIDSON AVENUE  
STA. 110+56.89

REFERENCE TIE COORDINATES			
POINT DESCRIPTION	STATION	NORTHING	EASTING
CONTROL POINT # 1	107+50.00	8288.3037	10032.1660
POINT OF BEGINNING	107+60.00	8298.3072	10032.1303
PC - CURVE C-1	107+82.81	8321.1206	10032.0488
PI - CURVE C-1	108+65.18	8403.4910	10031.7546
PT FOR C-1/PC FOR C-2	109+47.20	8484.7361	10018.1829
PI - CURVE C-2	110+56.89	8592.9308	10000.1094
CONTROL POINT # 2 (PT FOR C-2)	111+66.08	8702.6246	10000.0744
CONTROL POINT # 3	119+50.00	9486.5409	9999.8243
POINT OF END	124+05.31	9941.8530	9999.6790
CONTROL POINT # 4	124+50.00	9986.5409	9999.6142

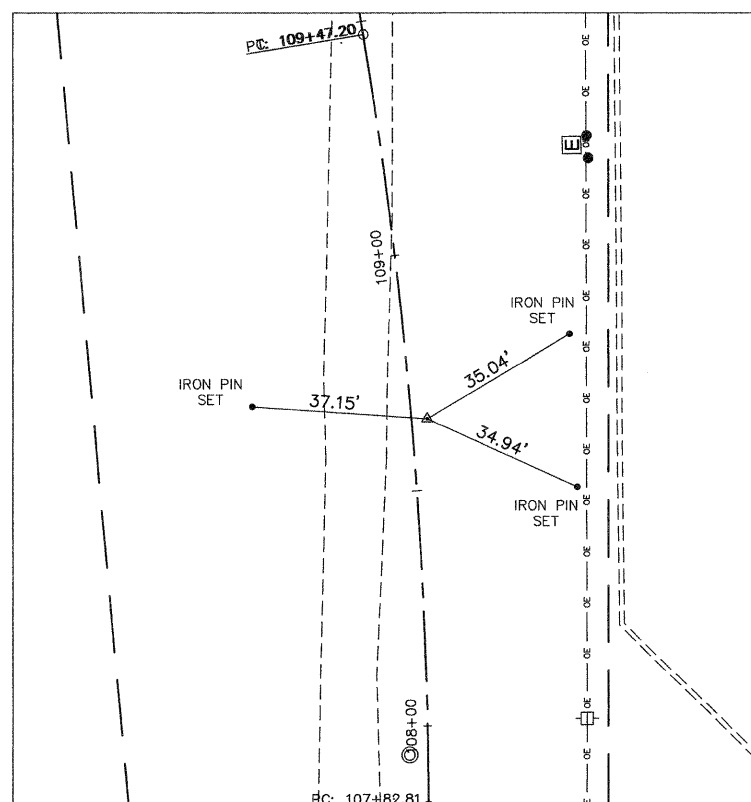
NOTE: THE REFERENCE TIES SHOWN ARE THE ONLY CONTROL POINTS THAT WILL BE PROVIDED BY THE CITY.



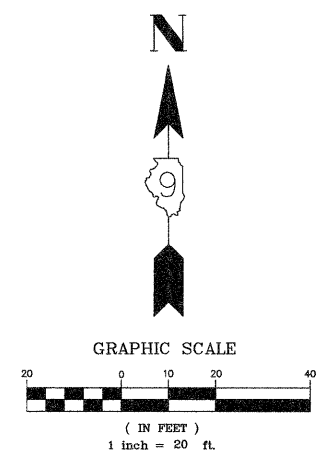
**CONTROL POINT #3**  
DAVIDSON AVENUE  
STA. 119+50.00



**CONTROL POINT #4**  
DAVIDSON AVENUE  
STA. 124+50.00



**POINT OF INTERSECTION C-1**  
DAVIDSON AVENUE  
STA. 108+65.18



V:\Shared\Clients\40039-MI\_Vernon\40039-000\_Davidson Avenue North\Drafting\Sheet Files\REFERENCE\_TIES\_2010.DWG, REFERENCE TIES: 12/17/2009 11:33:22 AM, 1:1

FILE NAME = 40039-300	USER NAME = Meyer, Tim	DESIGNED - MSF	REVISED -	<b>STATE OF ILLINOIS</b> <b>DEPARTMENT OF TRANSPORTATION</b>	<b>REFERENCE TIES</b>		F.A.U. RTE.	SECTION	COUNTY	TOTAL SHEETS	SHEET NO.
	PLOT SCALE = 1:1	DRAWN - TAM	REVISED -				8749	09-00130-00-RP	JEFFERSON	30	8
PLOT DATE = 12/17/2009	CHECKED - DLK	DATE - 12/09/09	REVISED -	SCALE: 1:20		SHEET NO. 8 OF 30 SHEETS		STA. NA TO STA. NA		CONTRACT NO. 99411	
						FED. ROAD DIST. NO. 9		ILLINOIS		ARRA 2009	