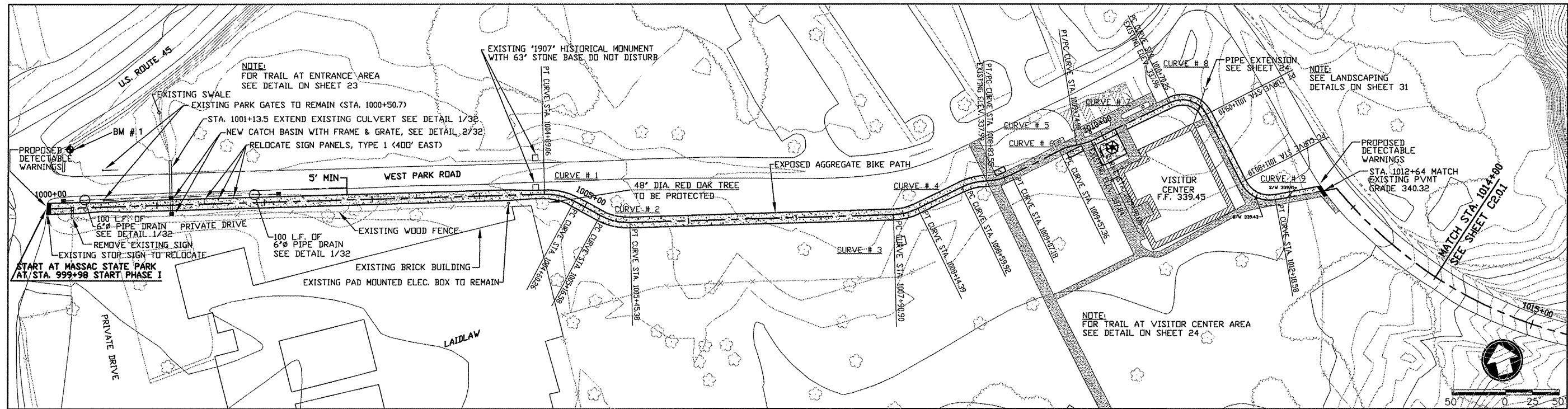
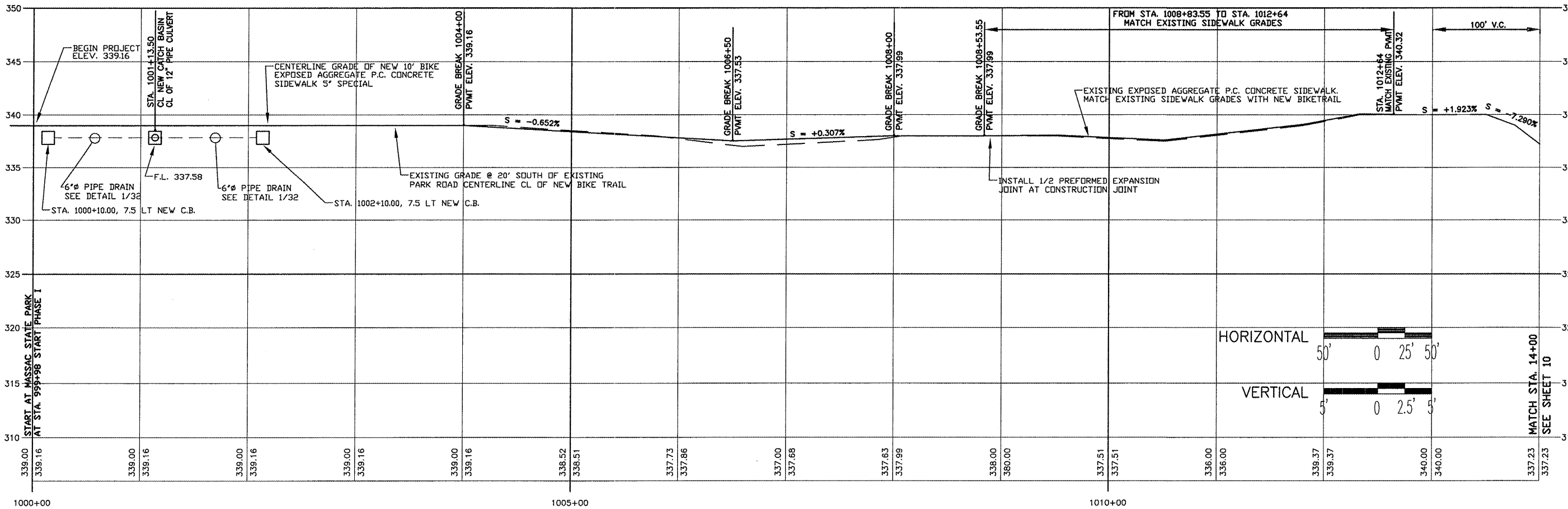


ROUTE	SECTION	COUNTY	TOTAL SHEETS	SHEET NO.
GRCDT09-00038-00-BT		MASSAC	55	9
FROM STA. 999+98 TO STA. 1014+00				
FEDERAL PROJECT NO. ARA-5045(009) CONTRACT NO. 99417				



HORIZONTAL CURVE # 1 DATA	HORIZONTAL CURVE # 2 DATA	HORIZONTAL CURVE # 3 DATA	HORIZONTAL CURVE # 4 DATA	HORIZONTAL CURVE # 5 DATA	HORIZONTAL CURVE # 6 DATA	HORIZONTAL CURVE # 7 DATA	HORIZONTAL CURVE # 8 DATA	HORIZONTAL CURVE # 9 DATA
PI STA. = 1004+75.000 R = 55.000	PI STA. = 1005+31.321 R = 55.000	PI STA. = 1008+02.825 R = 55.000	PI STA. = 1008+71.918 R = 55.000	PI STA. = 1008+95.551 R = 55.000	PI STA. = 1009+65.745 R = 55.000	PI STA. = 1009+82.391 R = 55.000	PI STA. = 1010+94.831 R = 25.000	PI STA. = 1012+02.514 R = 30.000
PC STA. = 1004+60.263 T = 14.737	PC STA. = 1005+16.584 T = 14.737	PC STA. = 1007+90.898 T = 11.927	PC STA. = 1008+59.916 T = 12.002	PC STA. = 1008+83.549 T = 12.002	PC STA. = 1009+57.357 T = 8.387	PC STA. = 1009+74.004 T = 8.387	PC STA. = 1010+70.263 T = 24.567	PC STA. = 1011+80.186 T = 22.327
PT STA. = 1004+89.061 L = 28.798	PT STA. = 1005+45.382 L = 28.798	PT STA. = 1008+14.389 L = 23.491	PT STA. = 1008+83.549 L = 23.633	PT STA. = 1009+07.183 L = 23.633	PT STA. = 1009+74.004 L = 16.647	PT STA. = 1009+90.650 L = 16.647	PT STA. = 1011+09.097 L = 38.834	PT STA. = 1012+18.575 L = 38.388
DELTA = 30°00'00" E = 1.940	DELTA = 30°00'00" E = 1.940	DELTA = 24°28'19" E = 1.278	DELTA = 24°37'12" E = 1.294	DELTA = 24°37'12" E = 1.294	DELTA = 17°20'29" E = 0.636	DELTA = 17°20'29" E = 0.636	DELTA = 89°00'00" E = 10.051	DELTA = 73°18'58" E = 7.397



FROM STA. 999+98 TO 1014+00