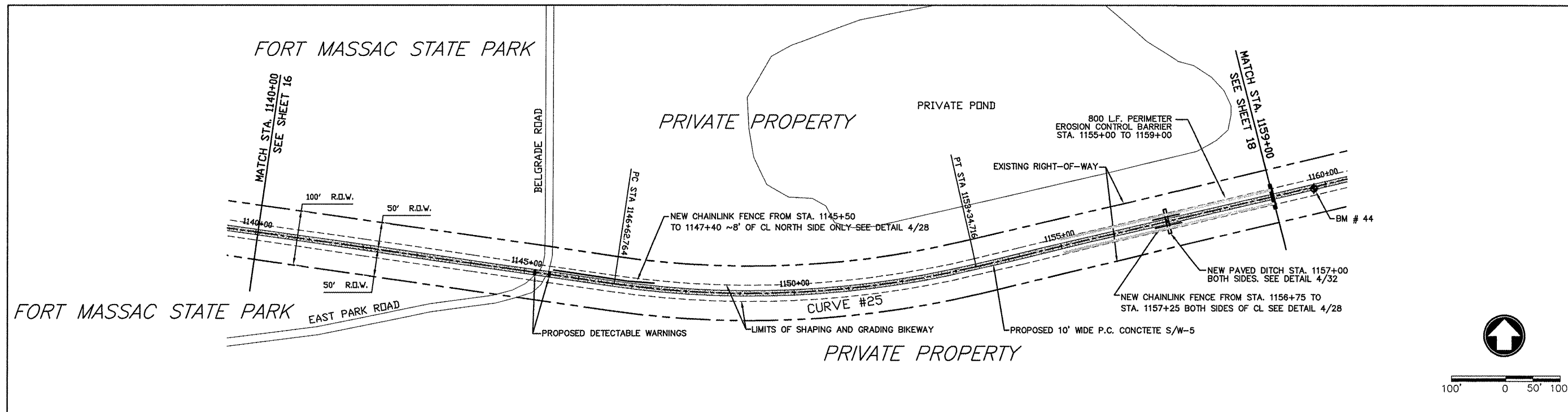


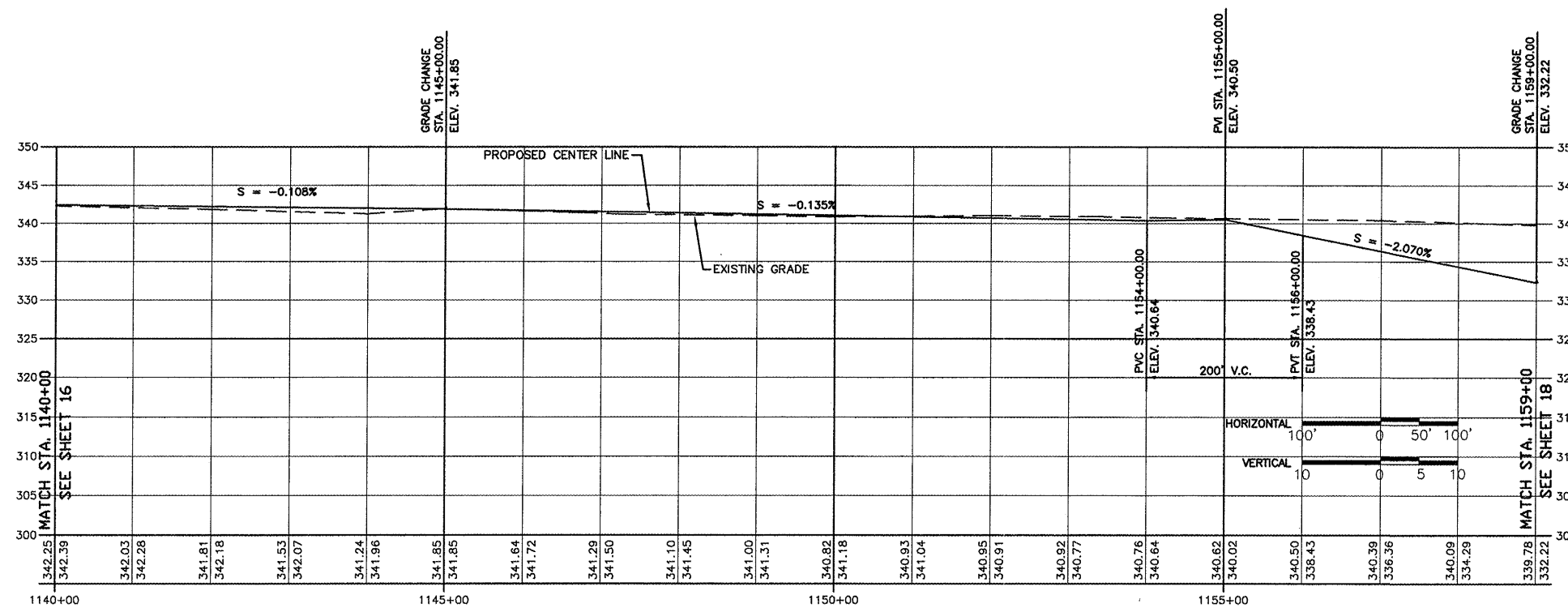
ROUTE	SECTION	COUNTY	TOTAL SHEETS	SHEET NO.
GRCDT09-00038-00-BT		MASSAC	55	17
FROM STA. 1140+00 TO STA. 1159+00				
FEDERAL PROJECT NO. ARA-5045(009) CONTRACT NO. 99417				



HORIZONTAL CURVE # 25 DATA
 PI STA. = 1150+02.764 R = 1785.163
 PC STA. = 1146+62.764 T = 340.00
 PT STA. = 1153+34.716 L = 671.952
 DELTA = 21°34'00" E = 32.090

FOUR MILE CREEK BRIDGE (BM #44) DESCRIPTION:
 1/2" X 24" REBAR, WITH PLASTIC SURVEY CAP MARKED "CITY OF METROPOLIS". C.P. # 44. ELEV. 339.12. LOCATED 2' RIGHT OF CENTERLINE OF RAILROAD BED AT STA. 1059+73.16.

ALONG OLD R.R. R.O.W.



FROM STA. 1140+00 TO 1159+00