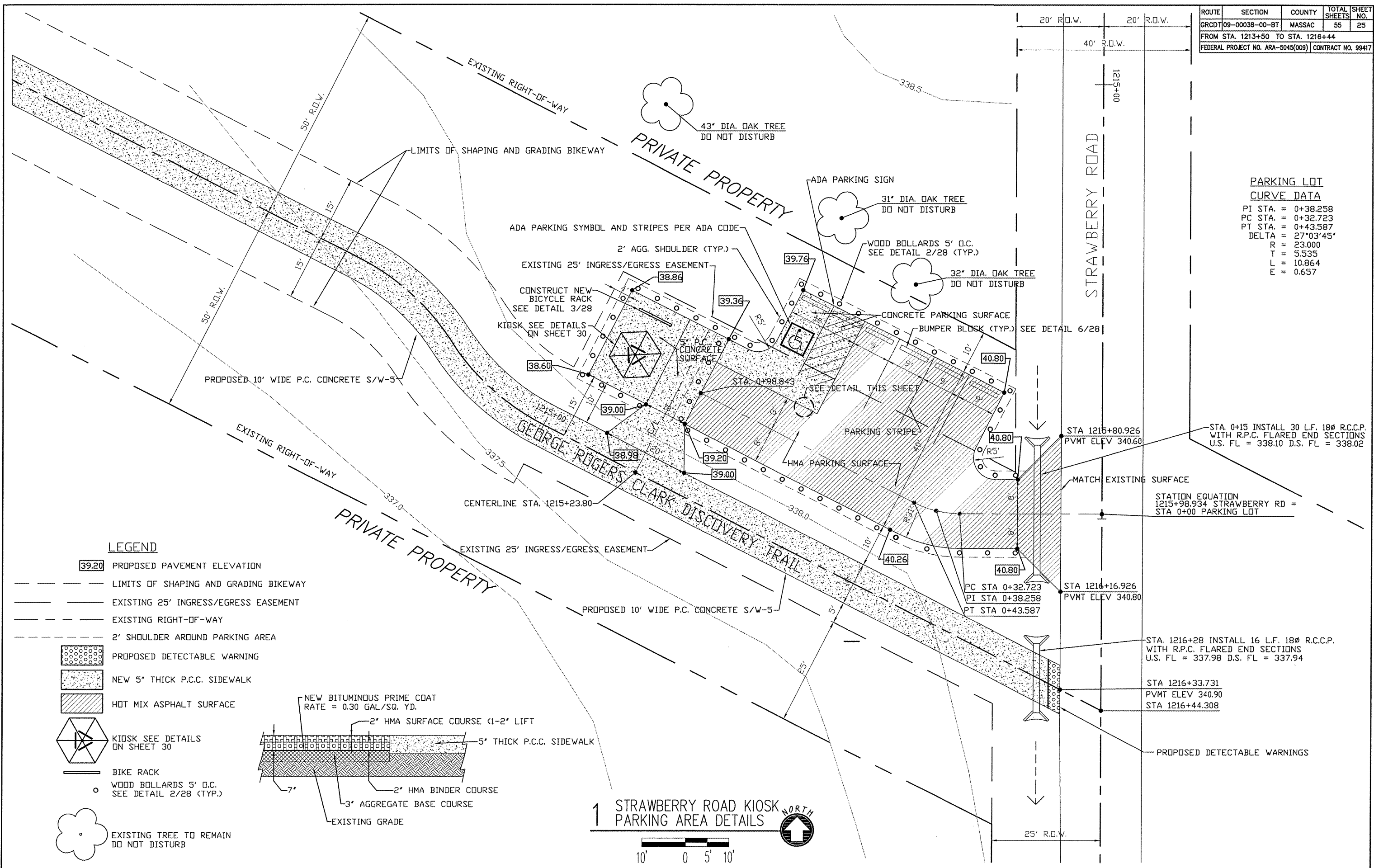


ROUTE	SECTION	COUNTY	TOTAL SHEETS	SHEET NO.
GRCDT09-00038-00-BT		MASSAC	55	25
FROM STA. 1213+50 TO STA. 1216+44				
FEDERAL PROJECT NO. ARA-5045(009) CONTRACT NO. 99417				

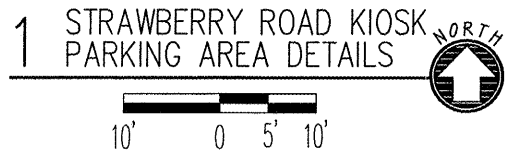
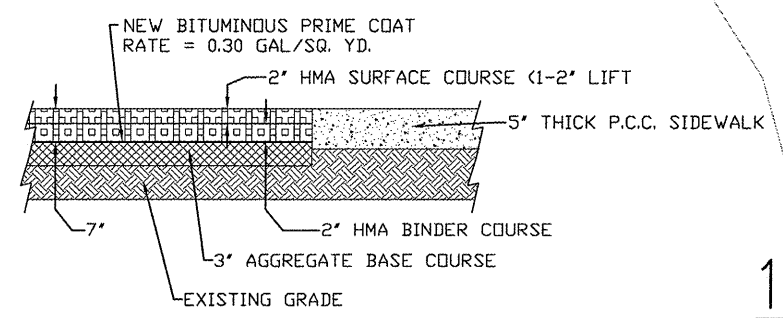
**PARKING LOT CURVE DATA**

PI STA. = 0+38.258  
 PC STA. = 0+32.723  
 PT STA. = 0+43.587  
 DELTA = 27°03'45"  
 R = 23.000  
 T = 5.535  
 L = 10.864  
 E = 0.657



**LEGEND**

- 39.20 PROPOSED PAVEMENT ELEVATION
- LIMITS OF SHAPING AND GRADING BIKEWAY
- EXISTING 25' INGRESS/EGRESS EASEMENT
- EXISTING RIGHT-OF-WAY
- 2' SHOULDER AROUND PARKING AREA
- PROPOSED DETECTABLE WARNING
- NEW 5" THICK P.C.C. SIDEWALK
- HOT MIX ASPHALT SURFACE
- KIOSK SEE DETAILS ON SHEET 30
- BIKE RACK
- WOOD BOLLARDS 5' O.C. SEE DETAIL 2/28 (TYP.)
- EXISTING TREE TO REMAIN DO NOT DISTURB



STA. 0+15 INSTALL 30 L.F. 18" R.C.C.P. WITH R.P.C. FLARED END SECTIONS U.S. FL = 338.10 D.S. FL = 338.02

MATCH EXISTING SURFACE

STATION EQUATION  
 1215+98.934 STRAWBERRY RD =  
 STA 0+00 PARKING LOT

STA 1215+80.926  
 PVMT ELEV 340.60

STA 1216+16.926  
 PVMT ELEV 340.80

STA. 1216+28 INSTALL 16 L.F. 18" R.C.C.P. WITH R.P.C. FLARED END SECTIONS U.S. FL = 337.98 D.S. FL = 337.94

STA 1216+33.731  
 PVMT ELEV 340.90  
 STA 1216+44.308

PROPOSED DETECTABLE WARNINGS