

016-0631

STATE OF ILLINOIS  
DEPARTMENT OF TRANSPORTATION  
DIVISION OF HIGHWAYS

PLANS FOR PROPOSED  
FEDERAL AID HIGHWAY

D-91-057-99



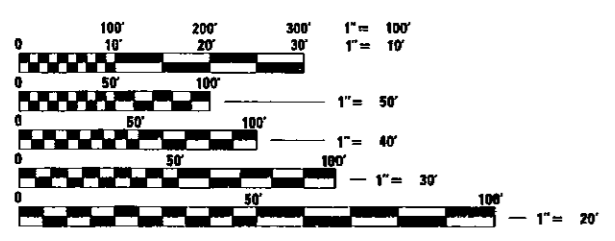
LOCATION OF SECTION INDICATED THUS: - [Symbol] -

VARIOUS DISTRICT WIDE  
1. 22ND STREET (CERMAK ROAD) OVER VARIOUS LOCATIONS  
2. WILLOW ROAD OVER VARIOUS LOCATIONS  
SECTION: 1999-031 BP  
BRIDGE PAINTING  
COOK COUNTY  
C-91-057-99

INDEX OF SHEETS

- 1. COVER SHEET
- STATE STANDARDS
- 2. SUMMARY OF QUANTITIES
- GENERAL NOTES FOR PAINT
- LOCATION MAP
- GENERAL NOTES
- 3-11. PLAN SHEETS
- 12. DISTRICT ONE FREEWAY STANDARD ONE LANE CLOSURE
- 13. DISTRICT ONE FREEWAY STANDARD TWO LANE CLOSURE
- 14. PARTIAL RAMP AND SHOULDER CLOSURE DETAILS

THIS IMPROVEMENT IS LOCATED  
IN THE VILLAGES OF  
BROADVIEW AND NORTHFIELD.



FULL SIZE PLANS HAVE BEEN PREPARED USING STANDARD  
ENGINEERING SCALES, REDUCED SIZED PLANS WILL NOT  
CONFORM TO STANDARD SCALES, IN MAKING MEASUREMENTS  
ON REDUCED PLANS, THE ABOVE SCALES MAY BE USED.

- 1. SN: 016-0631 22ND STREET / CERMAK ROAD OVER IHB RR & GARDNER STREET  
SN: 016-0632 22ND STREET / CERMAK ROAD OVER 25TH AVENUE
- 2. SN: 016-0536 WILLOW ROAD OVER I-94 / EDENS EXPRESSWAY  
SN: 016-0818 WILLOW ROAD OVER SKOKIE RIVER

**TRAFFIC DATA**  
1.) 1994 ADT = 12,500  
2.) 1994 ADT = 152,300

**SPEED LIMIT**  
1.) 35 MPH  
2.) 55 MPH

**STATE STANDARDS**  
701101, 701401, 701606, 702001

STATE OF ILLINOIS  
DEPARTMENT OF TRANSPORTATION  
DIVISION OF HIGHWAYS

SUBMITTED \_\_\_\_\_ 19 \_\_\_\_\_

\_\_\_\_\_ DISTRICT ENGINEER

\_\_\_\_\_ 19 \_\_\_\_\_

ENGINEER OF PROJECT DEVELOPMENT AND IMPLEMENTATION

\_\_\_\_\_ 19 \_\_\_\_\_

ENGINEER OF DESIGN AND ENVIRONMENT

\_\_\_\_\_ 19 \_\_\_\_\_

DIRECTOR, DIVISION OF HIGHWAYS

PRINTED BY AUTHORITY OF THE  
STATE OF ILLINOIS

CONTRACT NO. 60690

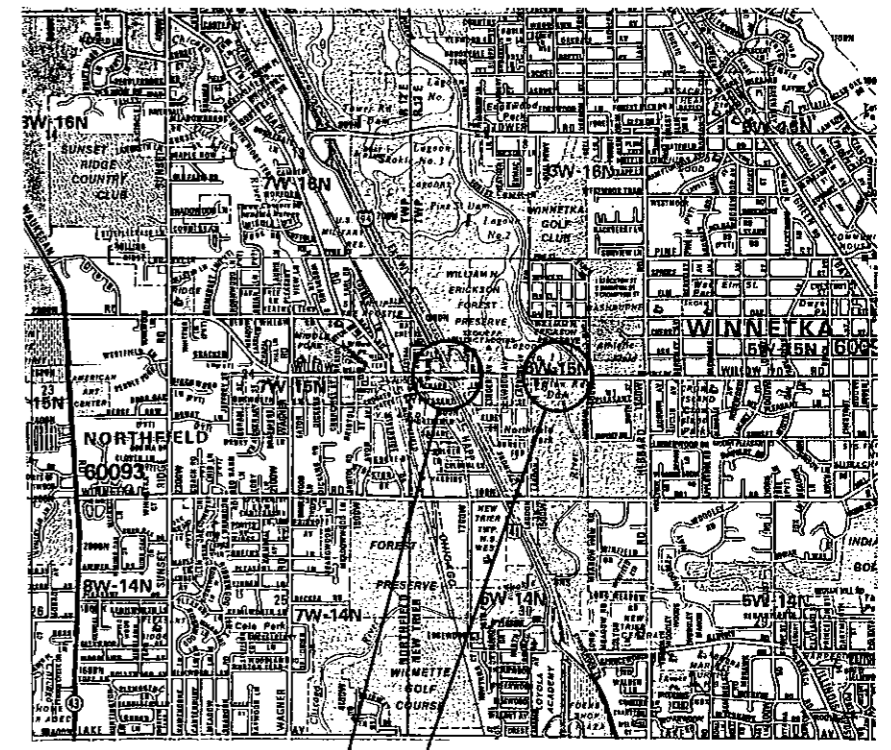
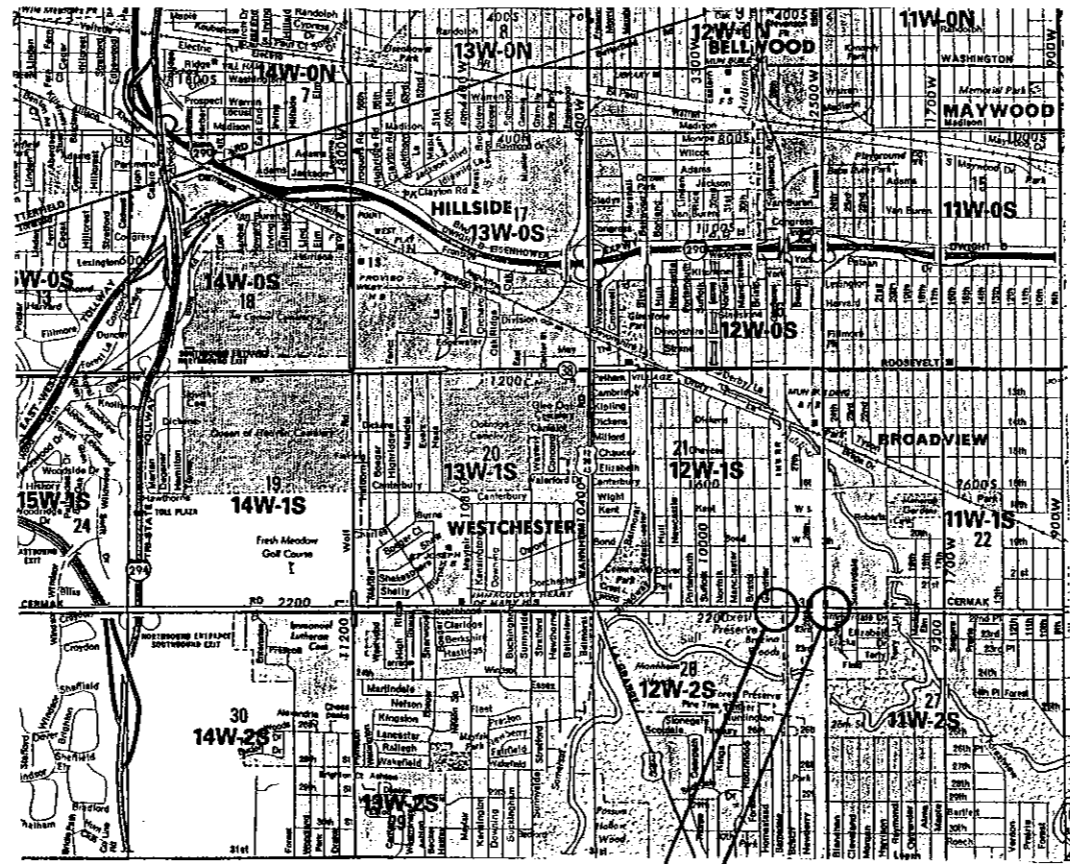
MAINTENANCE DESIGN ENGINEER: B. EPINO / L. EWERS (847) 705-4178

# LOCATION MAP

\* VARIOUS ROUTES

## SUMMARY OF QUANTITIES

CODE NO.	ITEM	UNIT	QUANTITY
50600600	CLEANING AND PAINTING STEEL, BRIDGE NO. 1	L. SUM	1
50600700	CLEANING AND PAINTING STEEL, BRIDGE NO. 2	L. SUM	1
50600800	CLEANING AND PAINTING STEEL, BRIDGE NO. 3	L. SUM	1
50600900	CLEANING AND PAINTING STEEL, BRIDGE NO. 4	L. SUM	1
50606200	BLASTING RESIDUE CONTAINMENT AND DISPOSAL	L. SUM	1
50606300	POWER TOOL CLEANING RESIDUE CONTAINMENT AND DISPOSAL	L. SUM	1
70102625	TRAFFIC CONTROL AND PROTECTION STANDARD 701606	L. SUM	1
X7011015	TRAFFIC CONTROL AND PROTECTION (EXPRESSWAY)	L. SUM	1
Z0048600	RAILROAD PROTECTIVE LIABILITY INSURANCE	L. SUM	1



## GENERAL NOTES FOR PAINT

### PAINTING EXISTING STEEL OF HIGHWAY GRADE SEPARATION STRUCTURES (STRUCTURE NUMBERS 016-0631, 016-0632, 016-0536):

CLEANING AND PAINTING OF THE EXISTING STRUCTURAL STEEL SHALL BE AS SPECIFIED IN THE SPECIAL PROVISION FOR "CLEANING AND PAINTING EXISTING STEEL STRUCTURES".

- ALL EXISTING STRUCTURAL STEEL, INCLUDING BEARING DEVICES, WITHIN 1.5M (5 FEET) OF EITHER SIDE OF EXPANSION JOINTS SHALL BE CLEANED BY METHOD 1.
- THE EXTERIOR AND THE BOTTOM FLANGE OF THE FASCIA BEAMS, INCLUDING REMAINING BEARING DEVICES AT FASCIAS, SHALL BE CLEANED BY METHOD 3.
- ALL REMAINING EXISTING STRUCTURAL STEEL AND BEARING DEVICES SHALL BE CLEANED BY METHOD 2.
- THE ALUMINUM EPOXY MASTIC/ACRYLIC PAINT SYSTEM SHALL BE USED FOR PAINTING OF THE EXISTING STRUCTURAL STEEL.
- THE COLOR OF THE FINAL FINISH COAT FOR ALL INTERIOR STEEL SURFACES SHALL BE GRAY, MUNSELL NO. 5B 7/1.
- THE COLOR OF THE FINAL FINISH COAT FOR THE EXTERIOR AND BOTTOM FLANGE OF THE FASCIA BEAMS SHALL BE REDDISH BROWN, MUNSELL NO. 2.5YR 3/4

### PAINTING EXISTING STEEL OF RAILROAD AND STREAM CROSSING STRUCTURES (STRUCTURE NUMBERS 016-0818):

CLEANING AND PAINTING OF THE EXISTING STRUCTURAL STEEL SHALL BE AS SPECIFIED IN THE SPECIAL PROVISION FOR "CLEANING AND PAINTING EXISTING STEEL STRUCTURES".

- ALL EXISTING STRUCTURAL STEEL, INCLUDING BEARING DEVICES, SHALL BE CLEANED BY METHOD 3.
- THE ALUMINUM EPOXY MASTIC/ACRYLIC PAINT SYSTEM SHALL BE USED FOR PAINTING OF EXISTING STRUCTURAL STEEL.
- THE COLOR OF THE FINAL FINISH COAT SHALL BE REDDISH BROWN, MUNSELL NO. 2.5YR 3/4.

LOCATION NO. 1  
SN: 016-0631

LOCATION NO. 2  
SN: 016-0632

LOCATION NO. 3  
SN: 016-0536

LOCATION NO. 4  
SN: 016-0818

## GENERAL NOTES

- IT SHALL BE THE CONTRACTOR'S RESPONSIBILITY TO VERIFY ALL DIMENSIONS AND CONDITIONS EXISTING IN THE FIELD PRIOR TO CONSTRUCTION AND ORDERING OF MATERIALS.
- THE CONTRACTOR SHALL CONTACT THE DISTRICT ONE TRAFFIC CONTROL SUPERVISOR AT (847) 705-4155 A MINIMUM OF 72 HOURS IN ADVANCE OF BEGINNING WORK.
- THE CONTRACTOR WILL NOT BE ALLOWED TO SET UP A YARD OR FIELD OFFICE ON STATE PROPERTY WITHOUT WRITTEN PERMISSION FROM THE DEPARTMENT.
- WHEN ARTIFICIAL LIGHTING IS UTILIZED IN NIGHT OPERATIONS, THE CONTRACTOR SHALL EXERCISE THE UTMOST PRECAUTIONS IN PREVENTING ADVERSE VISIBILITY TO THE MOTORING PUBLIC AND ADJOINING RESIDENTIAL AREAS.

REVISIONS	
NAME	DATE

ILLINOIS DEPARTMENT OF TRANSPORTATION

**SUMMARY OF QUANTITIES**  
**GENERAL NOTES FOR PAINT**  
**GENERAL NOTES**  
**LOCATION MAP**

SCALE: VERT. \_\_\_\_\_  
          HORIZ. \_\_\_\_\_

DATE: \_\_\_\_\_

DRAWN BY \_\_\_\_\_  
DESIGNED BY \_\_\_\_\_  
CHECKED BY \_\_\_\_\_

\* VARIOUS ROUTES

STATE OF ILLINOIS  
DEPARTMENT OF PUBLIC WORKS & BUILDINGS  
DIVISION OF HIGHWAYS

SHEET NO. 1  
26 SHEETS

**ELEVATION**

**PLAN**

**PROFILE**

**SECTION AT EDGE OF SLOPE WALL**

**LOADING H20-516-44**

**GENERAL NOTES**

Class X Concrete shall be used throughout.  
 Curbs aggregate which is to be used in end posts and parapet wall must be absolutely free of chert, flint, limestone, lignite and soft sandstone.  
 The concrete floor slab shall be finished in accordance with Article 51.19 of the Standard Specifications.  
 Slope wall shall be reinforced with welded wire fabric 6"x6" mesh, 4 wires, weighing 58 lbs. per 100 sq. ft.

Roads 12" Open holes 1/2" unless noted.  
 Railings shall be adjusted to true alignment after curbs (safety walk), and parapet wall have been poured.  
 All rockers, rollers, bearing plates, lead plates, pinches, and anchor bolts shall be fabricated and set in accordance with Article 51.23 of the Standard Specifications and are included in quantity of Structural Steel.  
 Anchor bolts shall be set before riving diaphragms over supports.  
 Cross- roadway expansion guard shall be assembled in the shop in proper position with the adjacent ends in place and shall be left assembled for shop inspection.  
 Plates shall be flame cut, as provided in Article 54.5(1) of the Standard Specifications.  
 Abut Piles thru embankment shall be driven in precast holes in accordance with Article 60.9(c) of the Standard Specifications.  
 Except as otherwise provided, all structural steel shall receive one shop coat of red lead paint and two field coats of aluminum paint. See Articles 55.1 to 55.5 inclusive of the Standard Specifications.  
 All paint shall be furnished and applied by the Contractor.  
 The Contractor shall drive eight (8) test piles in permanent locations before welding remainder of piles. Drive one test pile at Piers 2-4-6/8 and one test pile at each Abutment.  
 The following surface of the bridge shall be waterproofed: Deck face of Abutments, Wingwalls and retaining walls from top of footing to top of ground surface.  
 Waterproofing shall be done in accordance with Article 51.21 of the Standard Specifications.

**STRESSES**

f<sub>c</sub> Super T-Sub = 1400 psi  
 f<sub>c</sub> Retaining Wall = 1000 psi  
 f<sub>c</sub> Reinforcement Bars = 28,000 psi  
 f<sub>s</sub> Structural Steel = 48,000 psi  
 n = 10  
 All Retlings = 75 psi.

**LOCATION SKETCH**

**APPENDIX ALL DATA**

As for Crossed Piles  
 1/2" Length - 100' On 30' P.A.  
 1/2" Pile - 10' Each Bridge

**SECTION 551-VB**

**BILL OF MATERIAL ROAD ITEMS**

ITEM	QUANTITY	UNIT	TOTAL
Combustible Concrete & Outer, Type 6	1171	CU. YD.	1171
French Backfill	169	CU. YD.	169
Bituminous Material (Prime Coat) 1 1/2 Gal.	500	CU. YD.	500
P.C. Concrete Base Course	54	CU. YD.	54
Aggregate (Prime Coat)	10	CU. YD.	10
Bituminous Concrete Binder Course	390	CU. YD.	390
Bituminous Concrete Surface Course	200	CU. YD.	200
P.C. Concrete Median, Type 4	1003	CU. YD.	1003
P.C. Concrete Sidewalk	54	CU. YD.	54
Long. Curb Expansion Joints	36	FT.	36
Grids, Stone, Beam Grade Rail	1003	CU. YD.	1003
Sodding	15,137	SQ. YD.	15,137
Supplemental Watering	38	UNIT	38
Typic. Ground Limestone	8	TON	8
Sub-Base Granular Material, Type A C-10	1,211	CU. YD.	1,211
Embankment	12,175	CU. YD.	12,175
Storm Sewers, Type 3, 8" Dia.	10	LN. FT.	10
Storm Sewers, Type 4, 10" Dia.	10	LN. FT.	10
Storm Sewers, Type 5, 12" Dia.	10	LN. FT.	10
Catch Basins, Type 1, 4' x 4' x 2' (Each)	4	EACH	4
Catch Basins, Type 2, 4' x 4' x 2' (Each)	4	EACH	4
Manholes, Type A, 18" Dia.	2	EACH	2
Countersunk Bars	1,200	LB.	1,200
Class X Concrete	2,110	CU. YD.	2,110
P.C. Concrete Precast (12' x 12' x 2')	51	CU. YD.	51
6" Cor. Metal Pipe, Perforated	1,200	LN. FT.	1,200
Perforated Granular Embankment	600	CU. YD.	600
Crossed Piles (10' x 20')	10	LN. FT.	10
Storm Sewers, Type 3, 8" Dia.	10	LN. FT.	10
Storm Sewers, Type 4, 10" Dia.	10	LN. FT.	10

**BILL OF MATERIAL BRIDGE ITEMS - 551-V0**

Item	Super	Sub	Total
Class A Excav. for Street		1,800	3,100
Embl. Structural Steel	1,800		1,800
Class X Concrete	1,211	1,211	2,422
Aluminum (Roadrail)	10	10	20
Reinforcement Bars	1,200	1,200	2,400
Crossed Pile (10' x 20')	10	10	20
Red Piles (Crossed Timber)			
Puncher Piles	10	10	20
Test Piles (Concrete)			
Manhole Plates	2	2	4
Storm Sewers, Type 3, 8" Dia.	10	10	20
Storm Sewers, Type 4, 10" Dia.	10	10	20

**SECTION 551-VI**

Embl. Structural Steel - 1,200 (200)

**PROJECT 11-116 371281**

**GENERAL PLAN & ELEVATION**

**CERMAK ROAD OVER**

**GARDNER ROAD - IHB RR & 25th AVE**

**SBI, Rt. 55 - Section 551-VBF**

**COOK COUNTY**

**STATION 274 + 34.38**

DESIGNED: Ronald C. Pelt  
 CHECKED: J. K. J.  
 DRAWN: L. A. F. Baker  
 APPROVED: R. R. Bond

DATE: July 29, 1957

FOR INFORMATION ONLY

ILLINOIS DEPARTMENT OF TRANSPORTATION

SN: 016-0631 & 016-0632

22nd STREET (CERMAK ROAD)  
OVER  
IHB RR & GARDNER & 25th AVENUE

REVISIONS	
NAME	DATE

SCALE: VERT. HORIZ.  
DATE

DRAWN BY  
DESIGNED BY  
CHECKED BY

\* VARIOUS ROUTES

STATE OF ILLINOIS  
DEPARTMENT OF PUBLIC WORKS & BUILDINGS  
DIVISION OF HIGHWAYS

SHEET NO. 4  
OF 14

FRAMING PLAN

Exterior Beams - 36 WF 130  
Interior Beams - 30 WF 104  
3 Span Unit over Gardner Road.

STRUCTURAL STEEL LAYOUT & DETAILS  
CERMAK ROAD OVER GARDNER ROAD  
S.D.I. Rr. 55 - SEC. 551-YBF  
COOK COUNTY  
STATION 274+34.38

TABLE OF "I" DIMENSIONS

Beam	Wt.	Flt.	Web	Flt.	Flt.	Flt.	Flt.
W130	0	0	0	0	0	0	0
W104	0	0	0	0	0	0	0
W82	0	0	0	0	0	0	0

FOR INFORMATION ONLY

ILLINOIS DEPARTMENT OF TRANSPORTATION  
SN: 016-0631  
22nd STREET (CERMAK ROAD)  
OVER  
IHB RR & GARDNER STREET

SCALE: VERT. HORIZ.  
DATE

DRAWN BY  
DESIGNED BY  
CHECKED BY

REVISIONS	
NAME	DATE

STATE OF ILLINOIS  
DEPARTMENT OF PUBLIC WORKS & BUILDINGS  
DIVISION OF HIGHWAYS

NOTE: All top of beam elevations to be increased by .01"

NOTE: All elevations are of top of beams @ E Drawings or E Splices.

FRAMING PLAN  
All Beams 24" x 12"

DESIGNED: *Conrad C. P.S.*  
CHECKED: *David H. Anderson*  
DRAWN BY: *W. A. Sauer*  
CHECKED: *J.A.J.*

DATE: July 23, 1959

APPROVED: *R.R. Brinkman*

TABLE OF "x" DIMENSIONS

PIER	1	2	3	4	5	6
1	0'	0'	0'	0'	0'	0'
2	0'	0'	0'	0'	0'	0'
3	0'	0'	0'	0'	0'	0'
4	0'	0'	0'	0'	0'	0'
5	0'	0'	0'	0'	0'	0'
6	0'	0'	0'	0'	0'	0'

STRUCTURAL STEEL DETAILS  
BETWEEN I.H.B. R.R. & GARDNER ROAD  
S.A. R. 55-300-531 VAF  
COOK COUNTY  
STATION 274+34.30

FOR INFORMATION ONLY

ILLINOIS DEPARTMENT OF TRANSPORTATION  
SN: 016-0631

22nd STREET (CERMAK ROAD)  
OVER  
IHB RR & GARDNER STREET

SCALE: VERT. \_\_\_\_\_  
HORIZ. \_\_\_\_\_  
DATE \_\_\_\_\_

DRAWN BY \_\_\_\_\_  
DESIGNED BY \_\_\_\_\_  
CHECKED BY \_\_\_\_\_

REVISIONS	
NAME	DATE

\* VARIOUS ROUTES

STATE OF ILLINOIS  
DEPARTMENT OF PUBLIC WORKS & BUILDINGS  
DIVISION OF HIGHWAYS

SHEET NO. 6  
OF 14 SHEETS

Note: All elevations are at top of beams unless otherwise noted.

**STEEL FRAMING PLAN**

Notes: See Plans 7 for section of Pier 6

**SECTION AT ABUTMENT**

**PIERS**

**DIAPHRAGM D1**

**DIAPHRAGM D2**

**DETAIL OF BEARING AT E. Abut. & Pier 6**

**DETAIL OF COVER PLATES**

**DETAIL OF BEARING AT PIER 6**

**DETAIL OF SPICE**

**DETAIL OF GIRTL**

**TABLE OF "I" DIMENSIONS**

Beam	Height	Flange	Web	Flange	Web	Flange	Web
INT. 1	24"	12"	1/2"	12"	1/2"	12"	1/2"
INT. 2	24"	12"	1/2"	12"	1/2"	12"	1/2"
INT. 3	24"	12"	1/2"	12"	1/2"	12"	1/2"
INT. 4	24"	12"	1/2"	12"	1/2"	12"	1/2"
INT. 5	24"	12"	1/2"	12"	1/2"	12"	1/2"
INT. 6	24"	12"	1/2"	12"	1/2"	12"	1/2"
INT. 7	24"	12"	1/2"	12"	1/2"	12"	1/2"
INT. 8	24"	12"	1/2"	12"	1/2"	12"	1/2"
INT. 9	24"	12"	1/2"	12"	1/2"	12"	1/2"
INT. 10	24"	12"	1/2"	12"	1/2"	12"	1/2"
INT. 11	24"	12"	1/2"	12"	1/2"	12"	1/2"
INT. 12	24"	12"	1/2"	12"	1/2"	12"	1/2"
INT. 13	24"	12"	1/2"	12"	1/2"	12"	1/2"
INT. 14	24"	12"	1/2"	12"	1/2"	12"	1/2"
INT. 15	24"	12"	1/2"	12"	1/2"	12"	1/2"
INT. 16	24"	12"	1/2"	12"	1/2"	12"	1/2"
INT. 17	24"	12"	1/2"	12"	1/2"	12"	1/2"
INT. 18	24"	12"	1/2"	12"	1/2"	12"	1/2"
INT. 19	24"	12"	1/2"	12"	1/2"	12"	1/2"
INT. 20	24"	12"	1/2"	12"	1/2"	12"	1/2"
INT. 21	24"	12"	1/2"	12"	1/2"	12"	1/2"
INT. 22	24"	12"	1/2"	12"	1/2"	12"	1/2"
INT. 23	24"	12"	1/2"	12"	1/2"	12"	1/2"
INT. 24	24"	12"	1/2"	12"	1/2"	12"	1/2"
INT. 25	24"	12"	1/2"	12"	1/2"	12"	1/2"
INT. 26	24"	12"	1/2"	12"	1/2"	12"	1/2"
INT. 27	24"	12"	1/2"	12"	1/2"	12"	1/2"
INT. 28	24"	12"	1/2"	12"	1/2"	12"	1/2"
INT. 29	24"	12"	1/2"	12"	1/2"	12"	1/2"
INT. 30	24"	12"	1/2"	12"	1/2"	12"	1/2"
INT. 31	24"	12"	1/2"	12"	1/2"	12"	1/2"
INT. 32	24"	12"	1/2"	12"	1/2"	12"	1/2"
INT. 33	24"	12"	1/2"	12"	1/2"	12"	1/2"
INT. 34	24"	12"	1/2"	12"	1/2"	12"	1/2"
INT. 35	24"	12"	1/2"	12"	1/2"	12"	1/2"
INT. 36	24"	12"	1/2"	12"	1/2"	12"	1/2"
INT. 37	24"	12"	1/2"	12"	1/2"	12"	1/2"
INT. 38	24"	12"	1/2"	12"	1/2"	12"	1/2"
INT. 39	24"	12"	1/2"	12"	1/2"	12"	1/2"
INT. 40	24"	12"	1/2"	12"	1/2"	12"	1/2"
INT. 41	24"	12"	1/2"	12"	1/2"	12"	1/2"
INT. 42	24"	12"	1/2"	12"	1/2"	12"	1/2"
INT. 43	24"	12"	1/2"	12"	1/2"	12"	1/2"
INT. 44	24"	12"	1/2"	12"	1/2"	12"	1/2"
INT. 45	24"	12"	1/2"	12"	1/2"	12"	1/2"
INT. 46	24"	12"	1/2"	12"	1/2"	12"	1/2"
INT. 47	24"	12"	1/2"	12"	1/2"	12"	1/2"
INT. 48	24"	12"	1/2"	12"	1/2"	12"	1/2"
INT. 49	24"	12"	1/2"	12"	1/2"	12"	1/2"
INT. 50	24"	12"	1/2"	12"	1/2"	12"	1/2"
INT. 51	24"	12"	1/2"	12"	1/2"	12"	1/2"
INT. 52	24"	12"	1/2"	12"	1/2"	12"	1/2"
INT. 53	24"	12"	1/2"	12"	1/2"	12"	1/2"
INT. 54	24"	12"	1/2"	12"	1/2"	12"	1/2"
INT. 55	24"	12"	1/2"	12"	1/2"	12"	1/2"
INT. 56	24"	12"	1/2"	12"	1/2"	12"	1/2"
INT. 57	24"	12"	1/2"	12"	1/2"	12"	1/2"
INT. 58	24"	12"	1/2"	12"	1/2"	12"	1/2"
INT. 59	24"	12"	1/2"	12"	1/2"	12"	1/2"
INT. 60	24"	12"	1/2"	12"	1/2"	12"	1/2"
INT. 61	24"	12"	1/2"	12"	1/2"	12"	1/2"
INT. 62	24"	12"	1/2"	12"	1/2"	12"	1/2"
INT. 63	24"	12"	1/2"	12"	1/2"	12"	1/2"
INT. 64	24"	12"	1/2"	12"	1/2"	12"	1/2"
INT. 65	24"	12"	1/2"	12"	1/2"	12"	1/2"
INT. 66	24"	12"	1/2"	12"	1/2"	12"	1/2"
INT. 67	24"	12"	1/2"	12"	1/2"	12"	1/2"
INT. 68	24"	12"	1/2"	12"	1/2"	12"	1/2"
INT. 69	24"	12"	1/2"	12"	1/2"	12"	1/2"
INT. 70	24"	12"	1/2"	12"	1/2"	12"	1/2"
INT. 71	24"	12"	1/2"	12"	1/2"	12"	1/2"
INT. 72	24"	12"	1/2"	12"	1/2"	12"	1/2"
INT. 73	24"	12"	1/2"	12"	1/2"	12"	1/2"
INT. 74	24"	12"	1/2"	12"	1/2"	12"	1/2"
INT. 75	24"	12"	1/2"	12"	1/2"	12"	1/2"
INT. 76	24"	12"	1/2"	12"	1/2"	12"	1/2"
INT. 77	24"	12"	1/2"	12"	1/2"	12"	1/2"
INT. 78	24"	12"	1/2"	12"	1/2"	12"	1/2"
INT. 79	24"	12"	1/2"	12"	1/2"	12"	1/2"
INT. 80	24"	12"	1/2"	12"	1/2"	12"	1/2"
INT. 81	24"	12"	1/2"	12"	1/2"	12"	1/2"
INT. 82	24"	12"	1/2"	12"	1/2"	12"	1/2"
INT. 83	24"	12"	1/2"	12"	1/2"	12"	1/2"
INT. 84	24"	12"	1/2"	12"	1/2"	12"	1/2"
INT. 85	24"	12"	1/2"	12"	1/2"	12"	1/2"
INT. 86	24"	12"	1/2"	12"	1/2"	12"	1/2"
INT. 87	24"	12"	1/2"	12"	1/2"	12"	1/2"
INT. 88	24"	12"	1/2"	12"	1/2"	12"	1/2"
INT. 89	24"	12"	1/2"	12"	1/2"	12"	1/2"
INT. 90	24"	12"	1/2"	12"	1/2"	12"	1/2"
INT. 91	24"	12"	1/2"	12"	1/2"	12"	1/2"
INT. 92	24"	12"	1/2"	12"	1/2"	12"	1/2"
INT. 93	24"	12"	1/2"	12"	1/2"	12"	1/2"
INT. 94	24"	12"	1/2"	12"	1/2"	12"	1/2"
INT. 95	24"	12"	1/2"	12"	1/2"	12"	1/2"
INT. 96	24"	12"	1/2"	12"	1/2"	12"	1/2"
INT. 97	24"	12"	1/2"	12"	1/2"	12"	1/2"
INT. 98	24"	12"	1/2"	12"	1/2"	12"	1/2"
INT. 99	24"	12"	1/2"	12"	1/2"	12"	1/2"
INT. 100	24"	12"	1/2"	12"	1/2"	12"	1/2"

DESIGNED: E. C. P. S.  
CHECKED: J. H. S.  
DATE: July 29, 1953

STRUCTURAL STEEL DETAILS  
CERMAK ROAD OVER I.H.B.R.R.  
S.A. R.C. 55-SEC. 551-VBF  
COOK COUNTY  
STATION 274+34.30

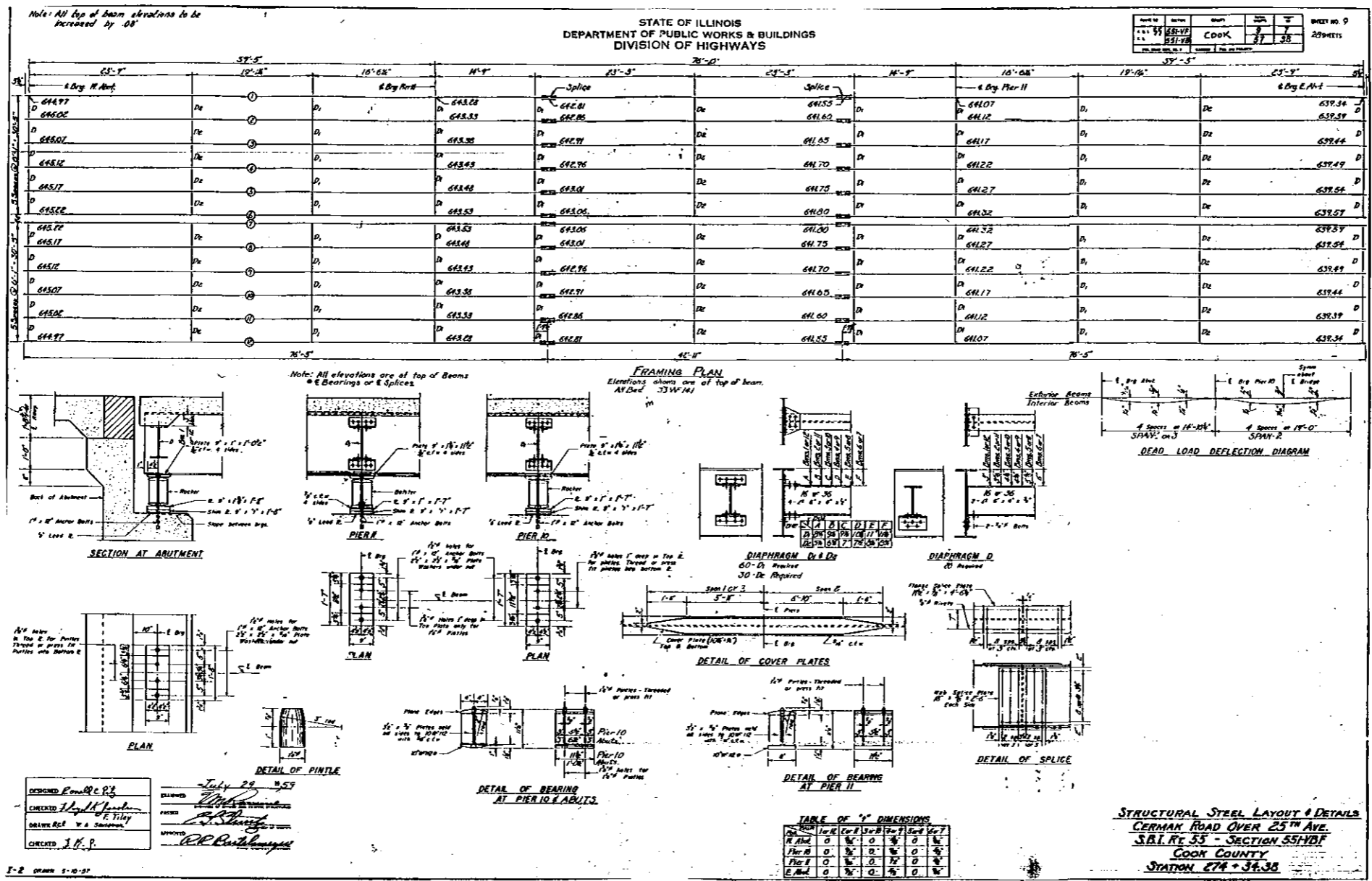
FOR INFORMATION ONLY

ILLINOIS DEPARTMENT OF TRANSPORTATION  
SN: 016-0631  
22nd STREET (CERMAK ROAD)  
OVER  
IHB RR & GARDNER STREET

SCALE: VERT. \_\_\_\_\_  
HORIZ. \_\_\_\_\_  
DATE \_\_\_\_\_

DRAWN BY \_\_\_\_\_  
DESIGNED BY \_\_\_\_\_  
CHECKED BY \_\_\_\_\_

REVISIONS	
NAME	DATE



FOR INFORMATION ONLY

ILLINOIS DEPARTMENT OF TRANSPORTATION  
 SN: 016-0632  
 22nd STREET (CERMAK ROAD)  
 OVER  
 25th AVENUE

SCALE: VERT. \_\_\_\_\_  
 HORIZ. \_\_\_\_\_  
 DATE: \_\_\_\_\_

DRAWN BY \_\_\_\_\_  
 DESIGNED BY \_\_\_\_\_  
 CHECKED BY \_\_\_\_\_

REVISIONS	
NAME	DATE