

STATE OF ILLINOIS
DEPARTMENT OF TRANSPORTATION

F.A.P. RTE.	SECTION	COUNTY	TOTAL SHEETS	SHEET NO.
*	(45) Q	CHRISTIAN	32	1
		ILLINOIS	CONTRACT NO. 72L88	

* 322 (US 51)

INDEX OF SHEETS

- 1 COVER SHEET
- 2 GENERAL NOTES
- 3-4 SUMMARY OF QUANTITIES
- 5 TYPICAL SECTIONS
- 6-15 SCHEDULES OF QUANTITIES
- 16-24 PLAN SHEETS
- 25-30 INTERSECTION DETAILS
- 31 DISTRICT PAVEMENT MARKING DETAIL
- 32 GENERAL DETAILS

**PROPOSED
HIGHWAY PLANS**

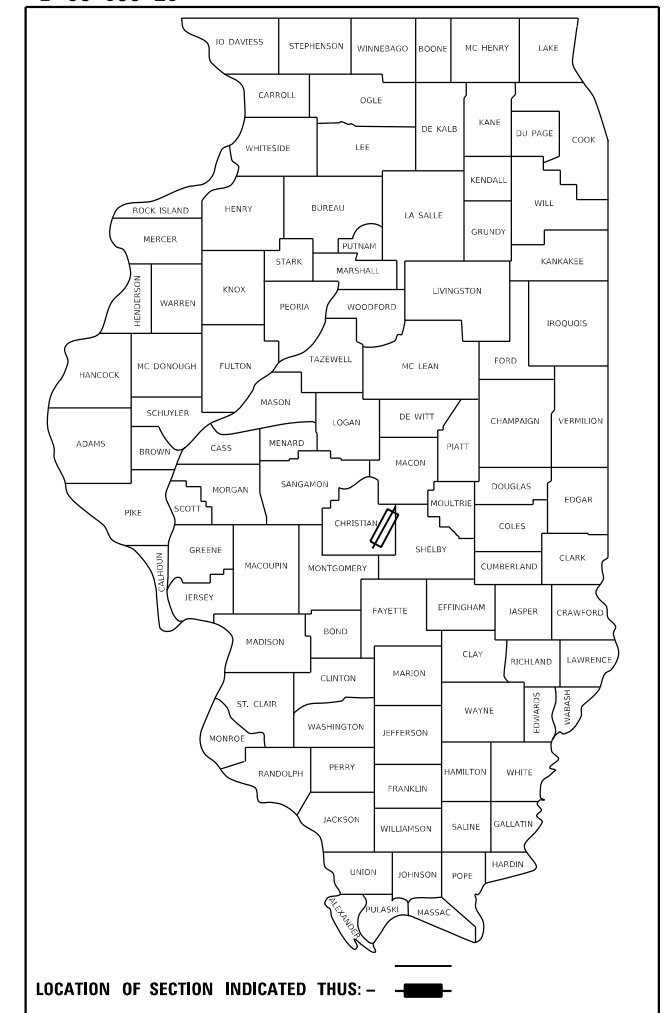
FAP ROUTE 322 (US 51)
SECTION (45) Q
PROJECT: NHPP – P6H3(350)
CAPE SEAL AND FOG SEAL
CHRISTIAN COUNTY

C-96-086-20

STANDARDS

- 000001-08 701201-05
- 001006 701901-08
- 701400-10 780001-05
- 701401-12 781001-04
- 701101-05

D-96-056-20



ADT: 4,942 (2019)
MU: 10.71%
SU: 3.47%
PV: 85.82%

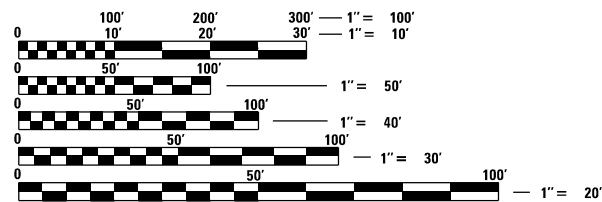
STATE OF ILLINOIS
DEPARTMENT OF TRANSPORTATION

SUBMITTED December 11 20 20

John P. Myer
REGIONAL ENGINEER

January 29 2021
Scott A. Elk
ENGINEER OF DESIGN AND ENVIRONMENT

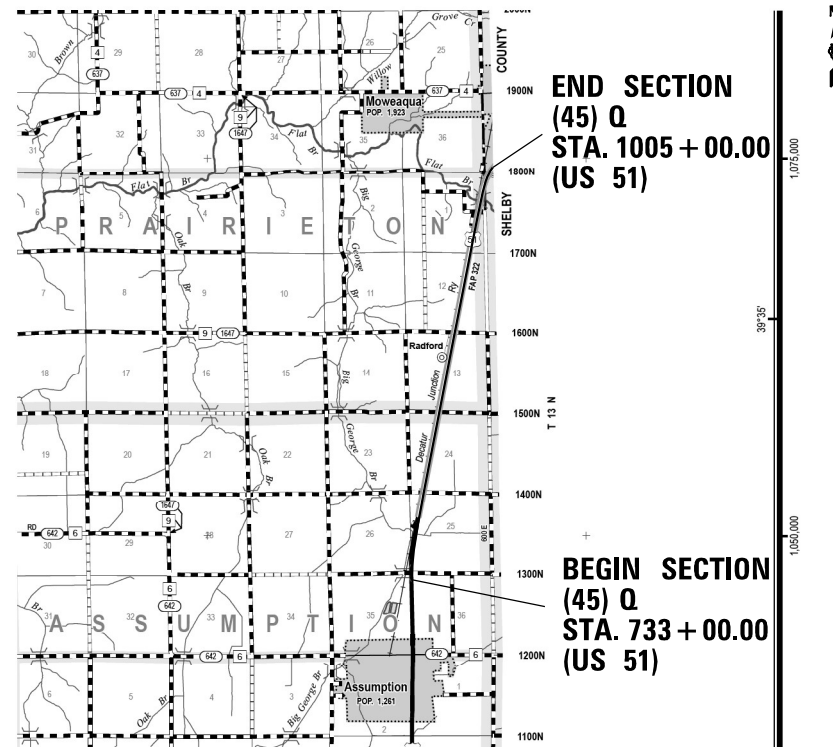
January 29 2021
James J. Quinn
DIRECTOR OF HIGHWAYS PROJECT IMPLEMENTATION



FULL SIZE PLANS HAVE BEEN PREPARED USING STANDARD ENGINEERING SCALES. REDUCED SIZED PLANS WILL NOT CONFORM TO STANDARD SCALES. IN MAKING MEASUREMENTS ON REDUCED PLANS, THE ABOVE SCALES MAY BE USED.

J.U.L.I.E.
JOINT UTILITY LOCATION INFORMATION FOR EXCAVATORS
1-800-892-0123
OR 811

PROJECT ENGINEER: JON KELLEY 217-785-2739
PROJECT MANAGER: CLOYD JACK 217-524-0064
PROJECT DESIGNER: BLAKE PASLEY 217-782-3332
CONTRACT NO. 72L88



GROSS LENGTH = 27,192 FT. = 5.15 MILE
NET LENGTH = 27,192 FT. = 5.15 MILE

PRINTED BY THE AUTHORITY
OF THE STATE OF ILLINOIS

				6-01422-0000	
				80% FEDERAL 20% STATE	
				ROADWAY	
CODE NO.	ITEM	UNIT	TOTAL QUANTITY	0005	RURAL
40400118	MICRO-SURFACING, SINGLE PASS	SQ YD	7,879	7,879	
40500001	FIBER-MODIFIED ASPHALT CRACK SEALING	FOOT	41,936	41,936	
40500061	CAPE SEAL	SQ YD	159,041	159,041	
40600290	BITUMINOUS MATERIALS (TACK COAT)	POUND	1,773	1,773	
67000400	ENGINEER'S FIELD OFFICE, TYPE A	CAL MO	12	12	
67100100	MOBILIZATION	L SUM	1	1	
70100450	TRAFFIC CONTROL AND PROTECTION, STANDARD 701201	L SUM	1	1	
70100800	TRAFFIC CONTROL AND PROTECTION, STANDARD 701401	L SUM	1	1	
70107025	CHANGEABLE MESSAGE SIGN	CAL DA	60	60	
70300100	SHORT TERM PAVEMENT MARKING	FOOT	26,857	26,857	
70300150	SHORT TERM PAVEMENT MARKING REMOVAL	SQ FT	8,952	8,952	
* 78009000	MODIFIED URETHANE PAVEMENT MARKING - LETTERS AND SYMBOLS	SQ FT	1,471	1,471	
* 78009005	MODIFIED URETHANE PAVEMENT MARKING - LINE 5"	FOOT	117,141	117,141	
* 78009006	MODIFIED URETHANE PAVEMENT MARKING - LINE 6"	FOOT	6,954	6,954	

* SPECIALTY ITEM

MODEL: Default
 FILE NAME: p:\glj\arcom.dwg
 ILLINOIS: p:\illinois\pwr\DOT\Documents\DOT_Offices\Bartlett_B\Projects\067218\B\CADD\DATA\CAD\Insets\06xxxxx\sh-500.dgn

USER NAME = jackca	DESIGNED -	REVISED -	STATE OF ILLINOIS DEPARTMENT OF TRANSPORTATION	SUMMARY OF QUANTITIES			F.A.P. RTE.	SECTION	COUNTY	TOTAL SHEETS	SHEET NO.
DRAWN -	REVISED -	*					(45) Q	CHRISTIAN	21	3	
PLOT SCALE = 100.0000' / in.	CHECKED -	REVISED -		SCALE: SHEET 1 OF 2 SHEETS STA. TO STA.			ILLINOIS FED. AID PROJECT		CONTRACT NO. 72L88		
PLOT DATE = 12/11/2020	DATE -	REVISED -		* 322 (US 51)							

				6-01422-0000	
				80% FEDERAL 20% STATE	
CODE NO.	ITEM	UNIT	TOTAL QUANTITY	ROADWAY	
				0005	RURAL
* 78009008	MODIFIED URETHANE PAVEMENT MARKING - LINE 8"	FOOT	2,991	2,991	
* 78009012	MODIFIED URETHANE PAVEMENT MARKING - LINE 12"	FOOT	1,493	1,493	
* 78009024	MODIFIED URETHANE PAVEMENT MARKING - LINE 24"	FOOT	220	220	
* 78100100	RAISED REFLECTIVE PAVEMENT MARKER	EACH	673	673	
78300200	RAISED REFLECTIVE PAVEMENT MARKER REMOVAL	EACH	673	673	
X0300010	BITUMINOUS MATERIALS (FOG SEAL)	POUND	138,028	138,028	
X0320157	CLEANING UNDERDRAIN OUTLETS	EACH	220	220	
X0322279	OUTLET MARKER	EACH	220	220	
Ø Z0076600	TRAINEES	HOUR	1000	1000	
Z0004542	HOT-MIX ASPHALT REMOVAL (SPECIAL)	SQ YD	159,041	159,041	
Ø Z0076604	TRAINEES TRAINING PROGRAM GRADUATE	HOUR	1000	1000	
Z0048665	RAILROAD PROTECTIVE LIABILITY INSURANCE	L SUM	1	1	

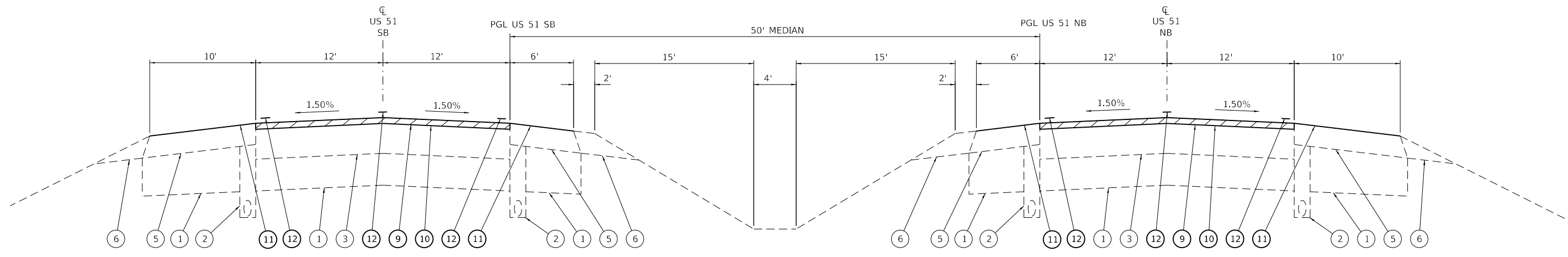
* SPECIALTY ITEM

Ø 0042

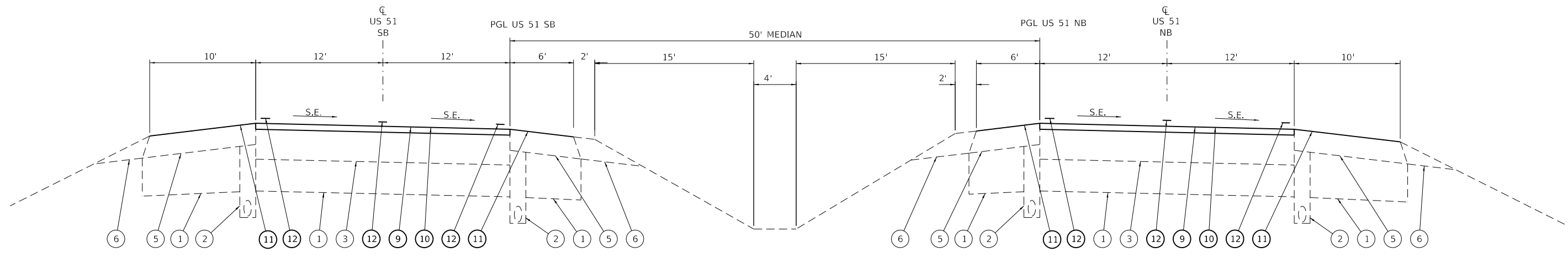
REV. - MS

MODEL: Default
 FILE NAME: p:\pub\lanscom.dwg
 I:\Illinois\pwr\DOT\Documents\DOT_Offices\Bartlett_B\Projects\067218\CAD\Drawings\06xxxxx\sh-500.dgn

USER NAME = jackca	DESIGNED -	REVISED -	STATE OF ILLINOIS DEPARTMENT OF TRANSPORTATION	SUMMARY OF QUANTITIES				F.A.P RTE.	SECTION	COUNTY	TOTAL SHEETS	SHEET NO.
PLOT SCALE = 100.0000' / in.	DRAWN -	REVISED -						* (45) Q	CHRISTIAN	32	4	
PLOT DATE = 12/11/2020	CHECKED -	REVISED -		SCALE: SHEET 2 OF 2 SHEETS STA. TO STA.				ILLINOIS FED. AID PROJECT		CONTRACT NO. 72L88		
	DATE -	REVISED -		* 322 (US 51)								



STA. 733+00 TO STA. 749+29
 STA. 779+44 TO STA. 998+48



STA. 749+29 TO STA. 779+44
 STA. 998+48 TO STA. 1005+00

- ① EXIST. SUBBASE GRANULAR MATERIAL, 12"
- ② EXIST. PIPE UNDERDRAINS 4"
- ③ EXIST. FULL-DEPTH HMA PAVEMENT, 13 1/2"
- ④ EXIST. FULL-DEPTH HMA PAVEMENT, 11 1/2"
- ⑤ EXIST. HMA SHOULDERS, 8"
- ⑥ EXIST. AGGREGATE SHOULDERS
- ⑦ EXIST. COMBINATION CONCRETE CURB AND GUTTER TYPE M-4.06
- ⑧ EXIST. SOLID PCC MEDIAN
- ⑨ PROPOSED HOT-MIX ASPHALT REMOVAL (SPECIAL), 1/2"
- ⑩ PROPOSED CAPE SEAL
- ⑪ PROPOSED BITUMINOUS MATERIALS (FOG SEAL)
- ⑫ MODIFIED URETHANE PAVEMENT MARKING - LINE 5"

NOTES:
 1) HMA SURFACE REMOVAL (SPECIAL) SHALL BE DONE BY HOLDING A CONSTANT DEPTH ACROSS THE LANE OF PAVEMENT.

MODEL: Default
 FILE NAME: p:\highway\com.doi\illinois\pwr\DOT\Documents\DOT Office\Drawings\Projects\DE72L88\typical.dwg

USER NAME = jackca	DESIGNED -	REVISED -
PLOT SCALE = 100.0000' / in.	DRAWN -	REVISIED -
PLOT DATE = 12/11/2020	CHECKED -	REVISIED -
	DATE -	REVISIED -

**STATE OF ILLINOIS
 DEPARTMENT OF TRANSPORTATION**

TYPICAL SECTIONS

SCALE: NTS SHEET 1 OF 1 SHEETS STA. TO STA.

F.A.P. RTE.	SECTION	COUNTY	TOTAL SHEETS	SHEET NO.
*	(45) Q	CHRISTIAN	32	15
			CONTRACT NO. 72L88	
			ILLINOIS FED. AID PROJECT	

* 322 (US 51)

CAPE SEAL

LOCATION	WIDTH (FOOT)	LENGTH (FOOT)	DIRECTION	DESCRIPTION	40500061	Z0004542	X0300010	40500001	78100100	78300200
					CAPE SEAL	HOT-MIX ASPHALT REMOVAL (SPECIAL)	BITUMINOUS MATERIALS (FOG SEAL)	FIBER-MODIFIED ASPHALT CRACK SEALING	RAISED REFLECTIVE PAVEMENT MARKER	RAISED REFLECTIVE PAVEMENT MARKER REMOVAL
					(SQ YD)	(SQ YD)	(POUND)	(FOOT)	(EACH)	(EACH)
733+00 TO 1005+00	24	26,939	NB	MAINLINE	71,837.3	71,837.3	32,326.8	26,939	337	337
BRIDGE OMISSION: STA 990+79 TO STA 993+39										
733+00 TO 1005+00	24	26,939	SB	MAINLINE	71,837.3	71,837.3	32,326.8		337	337
734+24 TO 742+93	VARIES	869	NB	LEFT TURN LANE	938.8	938.8	422.5	869		
734+23 TO 742+08	VARIES	785	NB	RIGHT TURN LANE	860.0	860.0	387.0	785		
766+68 TO 772+88	VARIES	620	NB	LEFT TURN LANE	642.2	642.2	289.0	620		
790+13 TO 796+78	VARIES	665	NB	LEFT TURN LANE	657.1	657.1	295.7	665		
791+74 TO 797+24	VARIES	550	NB	RIGHT TURN LANE	569.9	569.9	256.5	550		
844+52 TO 850+88	VARIES	636	NB	LEFT TURN LANE	613.7	613.7	276.2	636		
845+89 TO 851+41	VARIES	552	NB	RIGHT TURN LANE	619.7	619.7	278.9	552		
898+67 TO 904+89	VARIES	622	NB	LEFT TURN LANE	598.9	598.9	269.5	622		
898+74 TO 905+11	VARIES	637	NB	RIGHT TURN LANE	617.2	617.2	277.8	637		
979+26 TO 986+24	VARIES	698	NB	LEFT TURN LANE	690.7	690.7	310.8	698		
979+10 TO 985+91	VARIES	681	NB	RIGHT TURN LANE	670.4	670.4	301.7	681		
740+83 TO 748+15	VARIES	732	SB	LEFT TURN LANE	749.4	749.4	337.3	732		
741+45 TO 748+15	VARIES	670	SB	RIGHT TURN LANE	627.4	627.4	282.4	670		
771+36 TO 778+30	VARIES	694	SB	LEFT TURN LANE	861.9	861.9	387.9	694		
794+80 TO 802+48	VARIES	768	SB	LEFT TURN LANE	792.7	792.7	356.7	768		
794+98 TO 802+50	VARIES	752	SB	RIGHT TURN LANE	793.8	793.8	357.2	752		
849+24 TO 855+98	VARIES	674	SB	LEFT TURN LANE	632.8	632.8	284.8	674		
848+70 TO 855+94	VARIES	724	SB	RIGHT TURN LANE	675.6	675.6	304.0	724		
903+38 TO 910+26	VARIES	688	SB	LEFT TURN LANE	678.7	678.7	305.4	688		
902+99 TO 910+23	VARIES	724	SB	RIGHT TURN LANE	674.2	674.2	303.4	724		
983+55 TO 989+94	VARIES	639	SB	LEFT TURN LANE	708.1	708.1	318.7	639		
983+72 TO 989+89	VARIES	617	SB	RIGHT TURN LANE	692.8	692.8	311.8	617		
TOTAL:					159,041	159,041	71,568	41,936	673	673

NOTES:
FIBER-MODIFIED ASPHALT CRACK SEALING QUANTITY IS FOR NB CENTERLINE JOINT AND NB & SB TURN LANE JOINTS.

M:\E:\Default\pauljancan.com.dwg I:\Illinois\pwr\DOT\Documents\DOT_Offices\Bartlett_B\Projects\067218\CA\Drawings\06xxxxx\sh-schedule.dgn

USER NAME = jackca	DESIGNED -	REVISED -
	DRAWN -	REVISED -
PLOT SCALE = 100.0000 ' / in.	CHECKED -	REVISED -
PLOT DATE = 12/11/2020	DATE -	REVISED -

**STATE OF ILLINOIS
DEPARTMENT OF TRANSPORTATION**

SCHEDULE OF QUANTITIES			
SCALE:	SHEET 1	OF 10 SHEETS	STA. TO STA.

F.A.P. RTE.	SECTION	COUNTY	TOTAL SHEETS	SHEET NO.
*	(45) Q	CHRISTIAN	32	6
			CONTRACT NO. 72L88	
		ILLINOIS FED. AID PROJECT		

MEDIAN AND SIDE ROAD MICRO-SURFACING SCHEDULE

LOCATION			DESCRIPTION	DIRECTION	AREA (SQ FT)	40400118	40600290
						MICRO-SURFACING, SINGLE PASS (SQ YD)	BITUMINOUS MATERIALS (TACK COAT) (POUND)
741+35	TO	742+41	MEDIAN		2806	311.8	70.2
740+57	TO	742+10	E 1300 NORTH ROAD	EAST	7759	862.1	194.0
741+79	TO	742+98	E 1300 NORTH ROAD	WEST	7383	820.3	184.6
771+62	TO	772+58	MEDIAN		2050	227.8	51.3
795+64	TO	796+53	MEDIAN		2705	300.6	67.6
795+50	TO	796+78	CO ROAD 1400 N	EAST	5727	636.3	143.2
795+52	TO	797+03	CO ROAD 1400 N	WEST	4386	487.3	109.7
849+62	TO	850+55	MEDIAN		2576	286.2	64.4
849+48	TO	850+74	CO ROAD 1500 N	EAST	5799	644.3	145.0
849+40	TO	850+72	CO ROAD 1500 N	WEST	4654	517.1	116.4
903+70	TO	904+62	MEDIAN		2716	301.8	67.9
903+50	TO	904+72	E 1600 NORTH ROAD	EAST	5997	666.3	149.9
903+51	TO	904+88	E 1600 NORTH ROAD	WEST	4456	495.1	111.4
984+16	TO	985+58	MEDIAN		3915	435.0	97.9
984+28	TO	985+50	E 1750 NORTH ROAD	EAST	4000	444.4	100.0
984+17	TO	985+50	E 1750 NORTH ROAD	WEST	3986	442.9	99.7
TOTAL						7,879	1,773

M:\E:\Default...
 FILE NAME: p:\pub\lanscom.dwg
 I:\Illinois\pwr\DOT\Documents\DOT_Offices\Drawt\ 8\Projects\0672\08\CADD\DATA\CAD\Drawings\06xxxxx\sh-schedule.dwg

USER NAME = jackca	DESIGNED -	REVISED -
	DRAWN -	REVISED -
PLOT SCALE = 100.0000 ' / in.	CHECKED -	REVISED -
PLOT DATE = 12/11/2020	DATE -	REVISED -

**STATE OF ILLINOIS
DEPARTMENT OF TRANSPORTATION**

SCHEDULE OF QUANTITIES

SCALE: SHEET 2 OF 10 SHEETS STA. TO STA.

F.A.P RTE.	SECTION	COUNTY	TOTAL SHEETS	SHEET NO.
*	(45) Q	CHRISTIAN	32	7
			CONTRACT NO. 72L88	
		ILLINOIS	FED. AID PROJECT	

SHORT TERM PAVEMENT MARKING SCHEDULE

LOCATION	LENGTH (FOOT)	PAINT DESCRIPTION	APPLICATIONS	70300100	70300150
				SHORT TERM PAVEMENT MARKING (FOOT)	SHORT TERM PAVEMENT MARKING REMOVAL (SQ FT)
733+00 TO 738+19	519	CENTERLINE	3	311.4	103.8
		EDGE	2	198.1	66.0
738+19 TO 745+84	765	CENTERLINE	3	459.0	153.0
		EDGE	2	268.2	89.4
		TURN LANE	3	412.8	137.6
745+84 TO 768+76	2,292	CENTERLINE	3	1,375.2	458.4
		EDGE	2	765.4	255.1
768+76 TO 775+88	712	CENTERLINE	3	427.2	142.4
		EDGE	2	225.0	75.0
		TURN LANE	3	197.1	65.7
775+88 TO 792+44	1,656	CENTERLINE	3	993.6	331.2
		EDGE	2	561.9	187.3
792+44 TO 796+78	434	CENTERLINE	3	260.4	86.8
		EDGE	2	264.9	88.3
		TURN LANE	3	413.1	137.7
796+78 TO 847+15	5,037	CENTERLINE	3	3,022.2	1,007.4
		EDGE	2	1,643.8	547.9
847+15 TO 853+78	663	CENTERLINE	3	397.8	132.6
		EDGE	2	234.1	78.0
		TURN LANE	3	359.7	119.9
853+78 TO 901+26	4,748	CENTERLINE	3	2,848.8	949.6
		EDGE	2	1,551.4	517.1
901+26 TO 907+07	581	CENTERLINE	3	348.6	116.2
		EDGE	2	207.7	69.2
		TURN LANE	3	314.7	104.9
907+07 TO 981+41	7,434	CENTERLINE	3	4,460.4	1,486.8
		EDGE	2	2,410.9	803.6
981+41 TO 988+38	697	CENTERLINE	3	418.2	139.4
		EDGE	2	214.6	71.5
		TURN LANE	3	392.4	130.8
988+38 TO 990+79	241	CENTERLINE	3	144.6	48.2
		EDGE	2	109.1	36.4
BRIDGE OMISSION: STA 990+79 TO STA 993+39					
993+39 TO 1000+05	666	CENTERLINE	3	399.6	133.2
		EDGE	2	245.1	81.7
TOTAL:				26,857	8,952

M:\E:\Default\pauljancs\work\Illinois\pwr\DOT\Documents\DOT_Offices\Drawt\ 8\Projects\0672\08\CAD\Drawings\06xxxxx\sh-schedule.dgn

USER NAME = jackca	DESIGNED -	REVISED -
	DRAWN -	REVISED -
PLOT SCALE = 100.0000 ' / in.	CHECKED -	REVISED -
PLOT DATE = 12/11/2020	DATE -	REVISED -

**STATE OF ILLINOIS
DEPARTMENT OF TRANSPORTATION**

SCHEDULE OF QUANTITIES

SCALE: SHEET 4 OF 10 SHEETS STA. TO STA.

F.A.P. RTE.	SECTION	COUNTY	TOTAL SHEETS	SHEET NO.
*	(45) Q	CHRISTIAN	32	9
			CONTRACT NO. 72L88	
		ILLINOIS	FED. AID PROJECT	

PAVEMENT MARKING LINE 8"						
LOCATION			LENGTH (FOOT)	DIRECTION	COLOR	78009008
						MODIFIED URETHANE PAVEMENT MARKING - LINE 8" (FOOT)
740+83	TO	742+95	212	INTERSECTION	YELLOW	237
983+55	TO	986+23	268	INTERSECTION	YELLOW	306
740+97	TO	741+61	64	NB	WHITE	199
741+36	TO	741+56	20	NB	WHITE	43
795+27	TO	795+98	71	NB	WHITE	168
795+74	TO	796+03	29	NB	WHITE	93
849+26	TO	849+96	70	NB	WHITE	167
849+69	TO	849+99	30	NB	WHITE	97
903+28	TO	904+00	72	NB	WHITE	178
903+81	TO	904+10	29	NB	WHITE	90
984+14	TO	984+64	50	NB	WHITE	107
742+19	TO	742+78	59	SB	WHITE	185
742+24	TO	742+43	19	SB	WHITE	39
796+18	TO	796+54	36	SB	WHITE	101
796+26	TO	796+98	72	SB	WHITE	166
850+12	TO	850+59	47	SB	WHITE	131
850+21	TO	850+92	71	SB	WHITE	165
904+19	TO	904+67	48	SB	WHITE	136
904+29	TO	904+93	64	SB	WHITE	155
984+90	TO	985+25	35	SB	WHITE	98
984+98	TO	985+56	58	SB	WHITE	130
TOTAL:						2,991

MOE:\1 - Default
 FILE NAME: p:\pub\lancorn.dwg
 I:\Illinois\pwr\DOT\Documents\DOT - Offices\Hartlet - B\Projects\DE72L88\CADD\DATA\CAD\lines\DE6xxxxx-sh-schedule.dgn

USER NAME = jackca	DESIGNED -	REVISED -	STATE OF ILLINOIS DEPARTMENT OF TRANSPORTATION	SCHEDULE OF QUANTITIES			F.A.P. RTE.	SECTION	COUNTY	TOTAL SHEETS	SHEET NO.
PLOT SCALE = 100.0000 ' / in.	DRAWN -	REVISED -					* (45) Q	CHRISTIAN	32	12	
PLOT DATE = 12/11/2020	CHECKED -	REVISED -		SCALE:	SHEET 7	OF 10 SHEETS	STA. TO STA.	CONTRACT NO. 72L88		ILLINOIS	FED. AID PROJECT
	DATE -	REVISED -		* 322 (US 51)							

PAVEMENT MARKING LINE 12"						
LOCATION			LENGTH	DIRECTION	COLOR	78009012
			(FOOT)			MODIFIED URETHANE PAVEMENT MARKING - LINE 12"
			(FOOT)			(FOOT)
740+83	TO	742+95	212	INTERSECTION	YELLOW	136
983+55	TO	986+23	268	INTERSECTION	YELLOW	200
740+97	TO	741+61	64	NB	WHITE	175
741+36	TO	741+56	20	NB	WHITE	6
795+27	TO	795+98	71	NB	WHITE	95
795+74	TO	796+03	29	NB	WHITE	39
849+26	TO	849+96	70	NB	WHITE	93
849+69	TO	849+99	30	NB	WHITE	37
903+28	TO	904+00	72	NB	WHITE	88
903+81	TO	904+10	29	NB	WHITE	31
984+14	TO	984+64	50	NB	WHITE	35
742+19	TO	742+78	59	SB	WHITE	112
742+24	TO	742+43	19	SB	WHITE	4
796+18	TO	796+54	36	SB	WHITE	45
796+26	TO	796+98	72	SB	WHITE	81
850+12	TO	850+59	47	SB	WHITE	46
850+21	TO	850+92	71	SB	WHITE	78
904+19	TO	904+67	48	SB	WHITE	52
904+29	TO	904+93	64	SB	WHITE	76
984+90	TO	985+25	35	SB	WHITE	37
984+98	TO	985+56	58	SB	WHITE	27
TOTAL:						1,493

M02E:\Default
 FILE NAME: p:\pub\lanscom.dwg
 I:\Illinois\pub\PHWDOT\Documents\DOT_Offices\Bartlett_B\Projects\DE72L88\CADD\DATA\CAD\FILES\DE6xxxxx\ph-schedule.dgn

USER NAME = jackca	DESIGNED -	REVISED -
	DRAWN -	REVISED -
PLOT SCALE = 100.0000 ' / in.	CHECKED -	REVISED -
PLOT DATE = 12/11/2020	DATE -	REVISED -

STATE OF ILLINOIS
DEPARTMENT OF TRANSPORTATION

SCHEDULE OF QUANTITIES			
SCALE:	SHEET 8	OF 10 SHEETS	STA. TO STA.

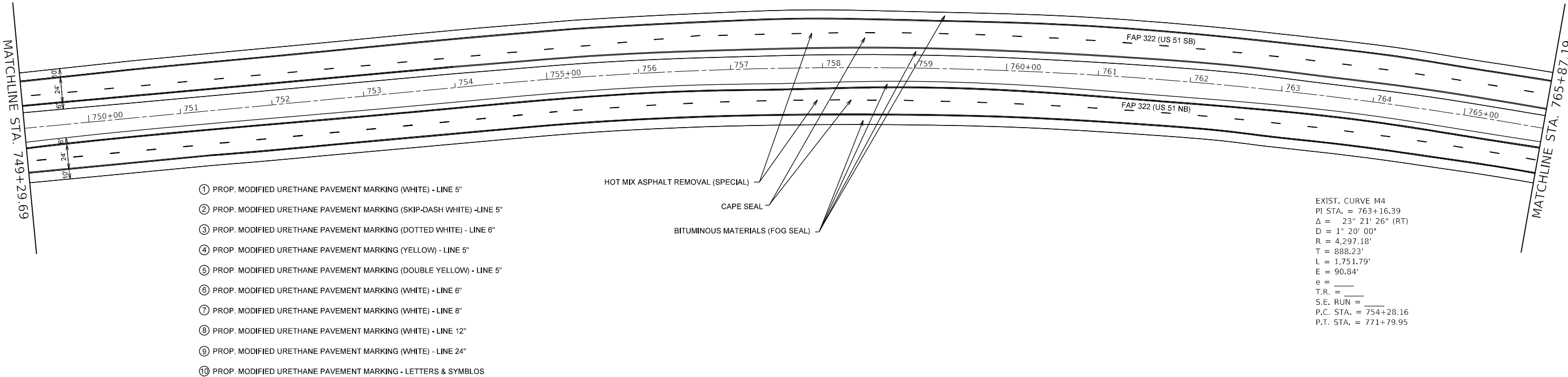
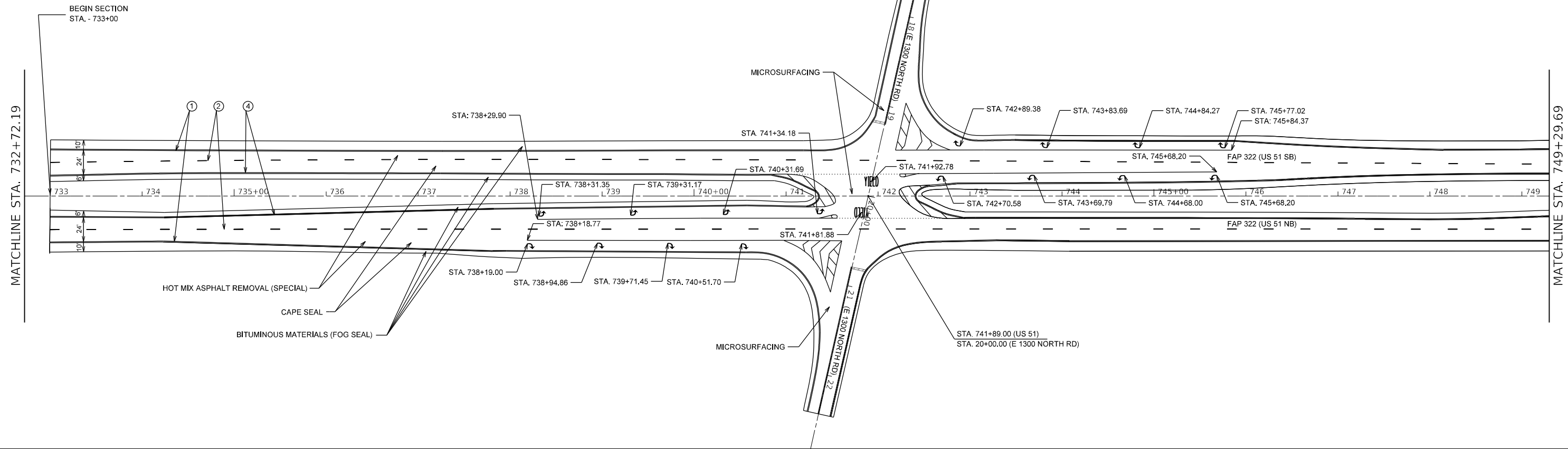
F.A.P. RTE.	SECTION	COUNTY	TOTAL SHEETS	SHEET NO.
*	(45) Q	CHRISTIAN	32	13
			CONTRACT NO. 72L88	
		ILLINOIS	FED. AID PROJECT	

PAVEMENT MARKING LINE 24"						
LOCATION			LENGTH	DIRECTION	COLOR	78009024
			(FOOT)			MODIFIED URETHANE PAVEMENT MARKING - LINE 24"
			(FOOT)			(FOOT)
741+72	TO	741+87	15	NB	WHITE	15
796+22	TO	796+48	26	NB	WHITE	26
850+23	TO	850+49	26	NB	WHITE	26
904+27	TO	904+53	26	NB	WHITE	26
985+01	TO	985+17	16	NB	WHITE	16
741+94	TO	742+07	13	SB	WHITE	13
795+71	TO	795+97	26	SB	WHITE	26
849+66	TO	849+92	26	SB	WHITE	26
903+77	TO	904+03	26	SB	WHITE	26
984+48	TO	984+68	20	SB	WHITE	20
					TOTAL:	220

PIPE UNDERDRAINS					
LOCATION			LENGTH	X0320157	X0322279
			(FOOT)	CLEANING UNDERDRAIN OUTLETS	OUTLET MARKER
			(FOOT)	(EACH)	(EACH)
733+00	TO	741+30	830	8	8
742+48	TO	771+56	2,908	24	24
772+56	TO	795+62	2,306	20	20
796+59	TO	849+61	5,302	44	44
850+54	TO	903+66	5,312	44	44
904+64	TO	984+13	7,949	64	64
985+55	TO	1005+00	1,945	16	16
				TOTAL:	220
					220

MOE:\1 - Default - Proj\planroom.dwg Illinois.spc:PWIDOT\Documents\DOT - Offices\Bartlett - B\Projects\067218\CAD\Drawings\06xxxxx\sh-schedule.dgn
 FILE NAME: pwidot\planroom.dwg

USER NAME = jackca	DESIGNED -	REVISED -	STATE OF ILLINOIS DEPARTMENT OF TRANSPORTATION	SCHEDULE OF QUANTITIES			F.A.P. RTE.	SECTION	COUNTY	TOTAL SHEETS	SHEET NO.
PLOT SCALE = 100.0000 ' / in.	DRAWN -	REVISED -					*	(45) Q	CHRISTIAN	32	14
PLOT DATE = 12/11/2020	CHECKED -	REVISED -									
	DATE -	REVISED -			SCALE:	SHEET 9	OF 10	SHEETS	STA.	TO STA.	
ILLINOIS FED. AID PROJECT											



- ① PROP. MODIFIED URETHANE PAVEMENT MARKING (WHITE) - LINE 5"
- ② PROP. MODIFIED URETHANE PAVEMENT MARKING (SKIP-DASH WHITE) -LINE 5"
- ③ PROP. MODIFIED URETHANE PAVEMENT MARKING (DOTTED WHITE) - LINE 6"
- ④ PROP. MODIFIED URETHANE PAVEMENT MARKING (YELLOW) - LINE 5"
- ⑤ PROP. MODIFIED URETHANE PAVEMENT MARKING (DOUBLE YELLOW) - LINE 5"
- ⑥ PROP. MODIFIED URETHANE PAVEMENT MARKING (WHITE) - LINE 6"
- ⑦ PROP. MODIFIED URETHANE PAVEMENT MARKING (WHITE) - LINE 8"
- ⑧ PROP. MODIFIED URETHANE PAVEMENT MARKING (WHITE) - LINE 12"
- ⑨ PROP. MODIFIED URETHANE PAVEMENT MARKING (WHITE) - LINE 24"
- ⑩ PROP. MODIFIED URETHANE PAVEMENT MARKING - LETTERS & SYMBOLS

EXIST. CURVE M4
 PI STA. = 763+16.39
 $\Delta = 23^\circ 21' 26''$ (RT)
 $D = 1^\circ 20' 00''$
 $R = 4,297.18'$
 $T = 888.23'$
 $L = 1,751.79'$
 $E = 90.84'$
 $e =$
 $T.R. =$
 $S.E. RUN =$
 $P.C. STA. = 754+28.16$
 $P.T. STA. = 771+79.95$

MODEL: Default
 FILE NAME: p:\projects\72L88\Drawings\DOT_Offices\Bretc. @projects\72L88\CADD\Drawings\PLAN SHEETS.1.dgn

USER NAME = pasleyb	DESIGNED -	REVISED -
	DRAWN -	REVISED -
PLOT SCALE = 110.1279' / in.	CHECKED -	REVISED -
PLOT DATE = 12/11/2020	DATE -	REVISED -

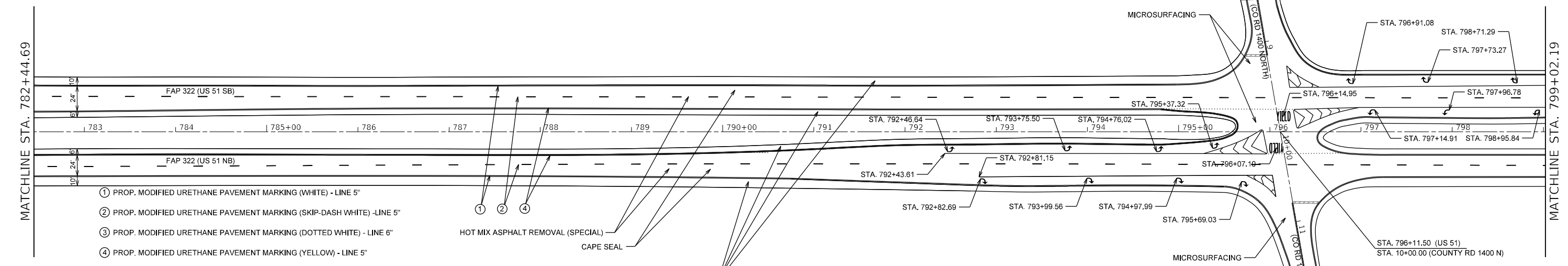
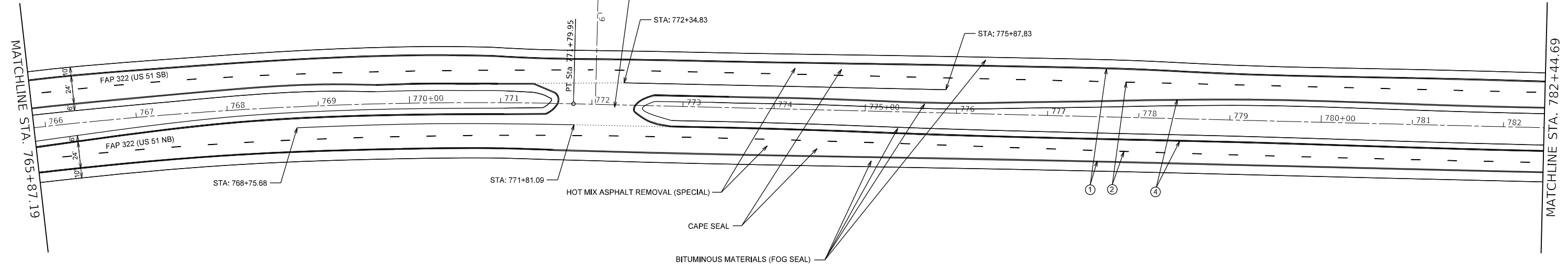
**STATE OF ILLINOIS
 DEPARTMENT OF TRANSPORTATION**

PLAN SHEETS

SCALE: SHEET 1 OF 9 SHEETS STA. TO STA.

F.A.P. RTE.	SECTION	COUNTY	TOTAL SHEETS	SHEET NO.
	(45) Q	CHRISTIAN	32	16
ILLINOIS FED. AID PROJECT			CONTRACT NO. 72L88	

*322 (US 51)



- ① PROP. MODIFIED URETHANE PAVEMENT MARKING (WHITE) - LINE 5"
- ② PROP. MODIFIED URETHANE PAVEMENT MARKING (SKIP-DASH WHITE) -LINE 5"
- ③ PROP. MODIFIED URETHANE PAVEMENT MARKING (DOTTED WHITE) - LINE 6"
- ④ PROP. MODIFIED URETHANE PAVEMENT MARKING (YELLOW) - LINE 5"
- ⑤ PROP. MODIFIED URETHANE PAVEMENT MARKING (DOUBLE YELLOW) - LINE 5"
- ⑥ PROP. MODIFIED URETHANE PAVEMENT MARKING (WHITE) - LINE 6"
- ⑦ PROP. MODIFIED URETHANE PAVEMENT MARKING (WHITE) - LINE 8"
- ⑧ PROP. MODIFIED URETHANE PAVEMENT MARKING (WHITE) - LINE 12"
- ⑨ PROP. MODIFIED URETHANE PAVEMENT MARKING (WHITE) - LINE 24"
- ⑩ PROP. MODIFIED URETHANE PAVEMENT MARKING - LETTERS & SYMBOLS

USER NAME = pasleyb	DESIGNED -	REVISED -
DRAWN -	REVISED -	
PLOT SCALE = 110.1279' / in.	CHECKED -	REVISED -
PLOT DATE = 12/11/2020	DATE -	REVISED -

**STATE OF ILLINOIS
DEPARTMENT OF TRANSPORTATION**

PLAN SHEETS			
SCALE:	SHEET 2	OF 9 SHEETS	STA. TO STA.

F.A.P. RTE.	SECTION	COUNTY	TOTAL SHEETS	SHEET NO.
*	(45) Q	CHRISTIAN	32	17
CONTRACT NO. 72L88				
ILLINOIS FED. AID PROJECT				

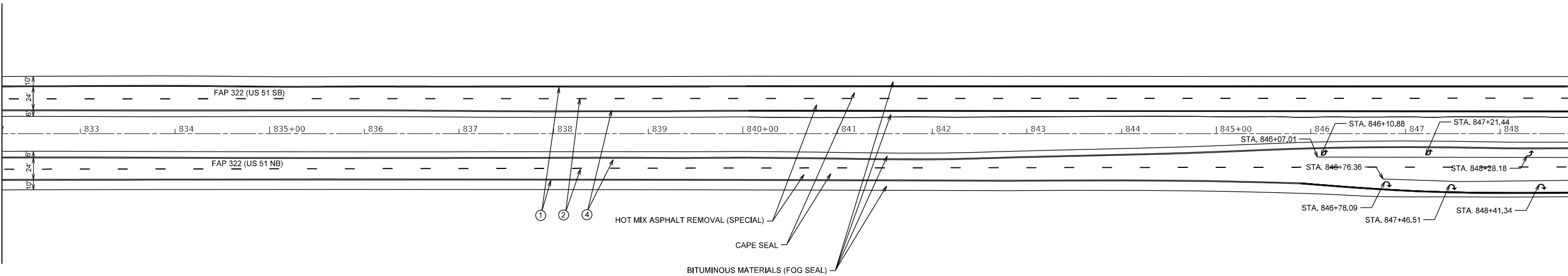
*322 (US 51)

MODEL: Default
 FILE NAME: \\p:\planroom\dot\illinois\dot\projects\72L88\CADD\plan\PLAN SHEETS 17.dgn



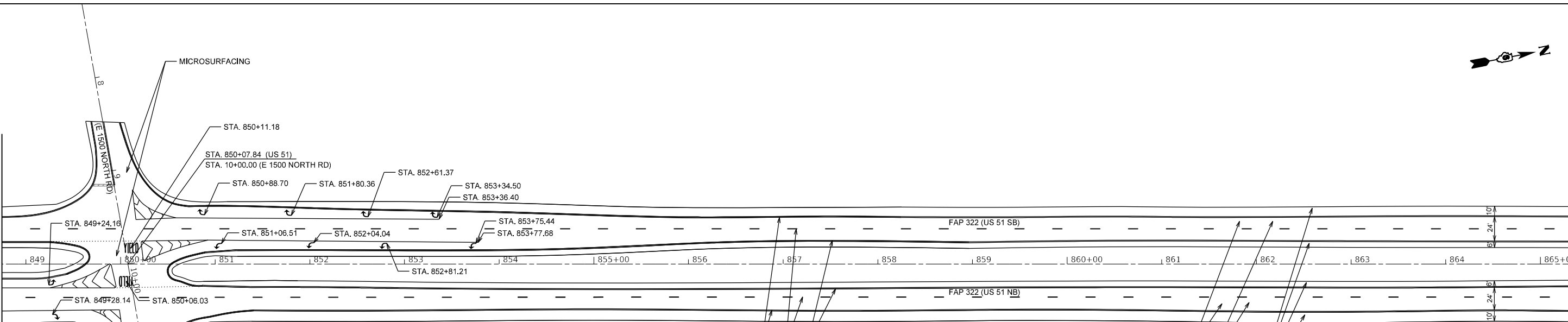
MATCHLINE STA. 832+17.19

MATCHLINE STA. 848+74.69



MATCHLINE STA. 848+74.69

MATCHLINE STA. 865+32.19



- ① PROP. MODIFIED URETHANE PAVEMENT MARKING (WHITE) - LINE 5"
- ② PROP. MODIFIED URETHANE PAVEMENT MARKING (SKIP-DASH WHITE) - LINE 5"
- ③ PROP. MODIFIED URETHANE PAVEMENT MARKING (DOTTED WHITE) - LINE 6"
- ④ PROP. MODIFIED URETHANE PAVEMENT MARKING (YELLOW) - LINE 5"
- ⑤ PROP. MODIFIED URETHANE PAVEMENT MARKING (DOUBLE YELLOW) - LINE 5"
- ⑥ PROP. MODIFIED URETHANE PAVEMENT MARKING (WHITE) - LINE 6"
- ⑦ PROP. MODIFIED URETHANE PAVEMENT MARKING (WHITE) - LINE 8"
- ⑧ PROP. MODIFIED URETHANE PAVEMENT MARKING (WHITE) - LINE 12"
- ⑨ PROP. MODIFIED URETHANE PAVEMENT MARKING (WHITE) - LINE 24"
- ⑩ PROP. MODIFIED URETHANE PAVEMENT MARKING - LETTERS & SYMBLOS

MODEL: Default
FILE NAME: p:\proj\lanroom\dot\illinois.gov\PIV\DOT\Documents\DOT_Offices\District_09\Projects\072L88\CADD\Drawings\PLAN\SHEETS\1.dgn

USER NAME = pasleyb	DESIGNED -	REVISED -
PLOT SCALE = 1/10,1314" / in.	DRAWN -	REVISED -
PLOT DATE = 12/11/2020	CHECKED -	REVISED -
	DATE -	REVISED -

**STATE OF ILLINOIS
DEPARTMENT OF TRANSPORTATION**

PLAN SHEETS			
SCALE:	SHEET 4	OF 9 SHEETS	STA. TO STA.

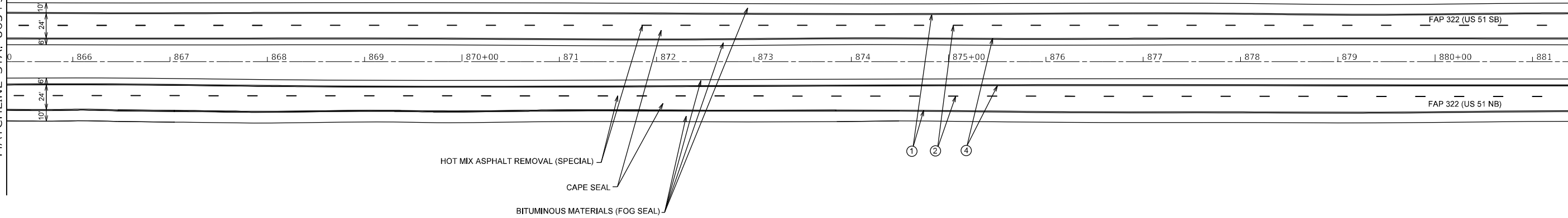
F.A.P. RTE.	SECTION	COUNTY	TOTAL SHEETS	SHEET NO.
#	(45) Q	CHRSTIAN	32	19
CONTRACT NO. 72L88				
ILLINOIS FED. AID PROJECT				

*322 (US 51)



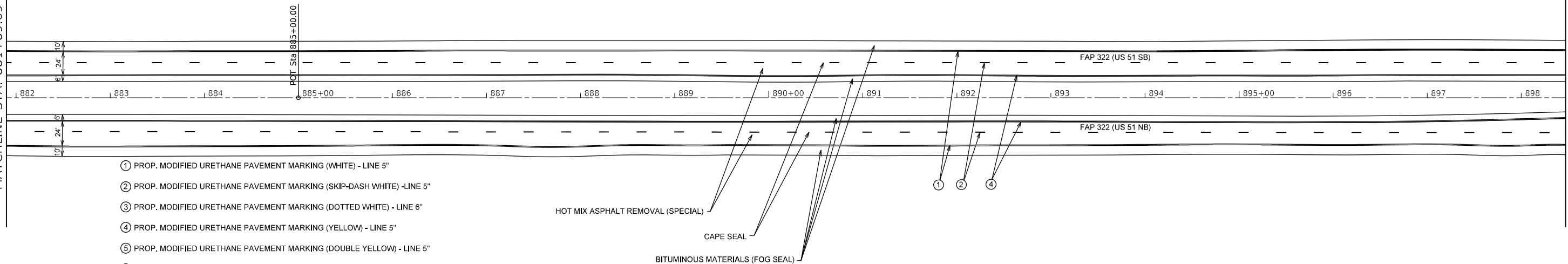
MATCHLINE STA. 865+32.19

MATCHLINE STA. 881+89.69



MATCHLINE STA. 881+89.69

MATCHLINE STA. 898+47.19



- ① PROP. MODIFIED URETHANE PAVEMENT MARKING (WHITE) - LINE 5"
- ② PROP. MODIFIED URETHANE PAVEMENT MARKING (SKIP-DASH WHITE) -LINE 5"
- ③ PROP. MODIFIED URETHANE PAVEMENT MARKING (DOTTED WHITE) - LINE 6"
- ④ PROP. MODIFIED URETHANE PAVEMENT MARKING (YELLOW) - LINE 5"
- ⑤ PROP. MODIFIED URETHANE PAVEMENT MARKING (DOUBLE YELLOW) - LINE 5"
- ⑥ PROP. MODIFIED URETHANE PAVEMENT MARKING (WHITE) - LINE 6"
- ⑦ PROP. MODIFIED URETHANE PAVEMENT MARKING (WHITE) - LINE 8"
- ⑧ PROP. MODIFIED URETHANE PAVEMENT MARKING (WHITE) - LINE 12"
- ⑨ PROP. MODIFIED URETHANE PAVEMENT MARKING (WHITE) - LINE 24"
- ⑩ PROP. MODIFIED URETHANE PAVEMENT MARKING - LETTERS & SYMBLOS

USER NAME = pasleyb	DESIGNED -	REVISED -
	DRAWN -	REVISED -
PLOT SCALE = 110.1314' / in.	CHECKED -	REVISED -
PLOT DATE = 12/11/2020	DATE -	REVISED -

**STATE OF ILLINOIS
DEPARTMENT OF TRANSPORTATION**

PLAN SHEETS

SCALE: SHEET 5 OF 9 SHEETS STA. TO STA.

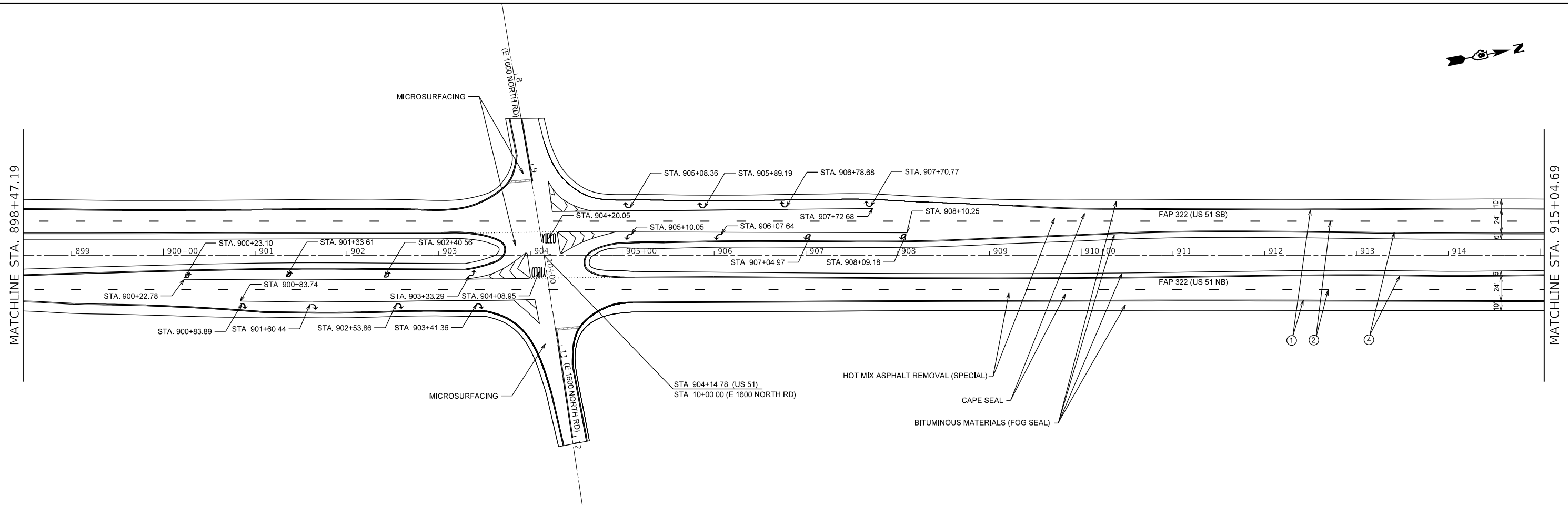
F.A.P. RTE.	SECTION	COUNTY	TOTAL SHEETS	SHEET NO.
*	(45) Q	CHRSTIAN	32	20
CONTRACT NO. 72L88				
ILLINOIS FED. AID PROJECT				

*322 (US 51)



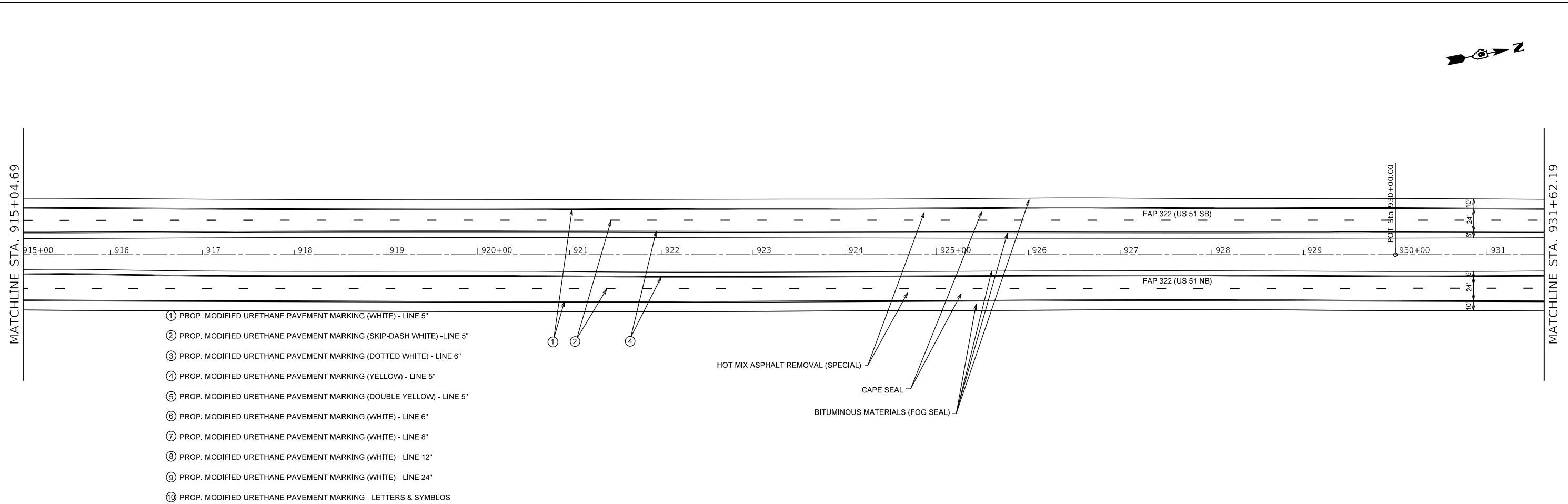
MATCHLINE STA. 898+47.19

MATCHLINE STA. 915+04.69



MATCHLINE STA. 915+04.69

MATCHLINE STA. 931+62.19



- ① PROP. MODIFIED URETHANE PAVEMENT MARKING (WHITE) - LINE 5"
- ② PROP. MODIFIED URETHANE PAVEMENT MARKING (SKIP-DASH WHITE) - LINE 5"
- ③ PROP. MODIFIED URETHANE PAVEMENT MARKING (DOTTED WHITE) - LINE 6"
- ④ PROP. MODIFIED URETHANE PAVEMENT MARKING (YELLOW) - LINE 5"
- ⑤ PROP. MODIFIED URETHANE PAVEMENT MARKING (DOUBLE YELLOW) - LINE 5"
- ⑥ PROP. MODIFIED URETHANE PAVEMENT MARKING (WHITE) - LINE 6"
- ⑦ PROP. MODIFIED URETHANE PAVEMENT MARKING (WHITE) - LINE 8"
- ⑧ PROP. MODIFIED URETHANE PAVEMENT MARKING (WHITE) - LINE 12"
- ⑨ PROP. MODIFIED URETHANE PAVEMENT MARKING (WHITE) - LINE 24"
- ⑩ PROP. MODIFIED URETHANE PAVEMENT MARKING - LETTERS & SYMBLOS

MODEL: Default
FILE NAME: \\w:\planroom\dot\illinois.gov\PHWDOT\Documents\DOT_Offices\District_8\Projects\72L88\CADD\Drawings\CAD\Sheet\PLANS\SHEETS1.dgn

USER NAME = pasleyb	DESIGNED -	REVISED -
	DRAWN -	REVISED -
PLOT SCALE = 110.0511' / in.	CHECKED -	REVISED -
PLOT DATE = 12/11/2020	DATE -	REVISED -

**STATE OF ILLINOIS
DEPARTMENT OF TRANSPORTATION**

PLANS SHEETS

SCALE: SHEET 6 OF 9 SHEETS STA. TO STA.

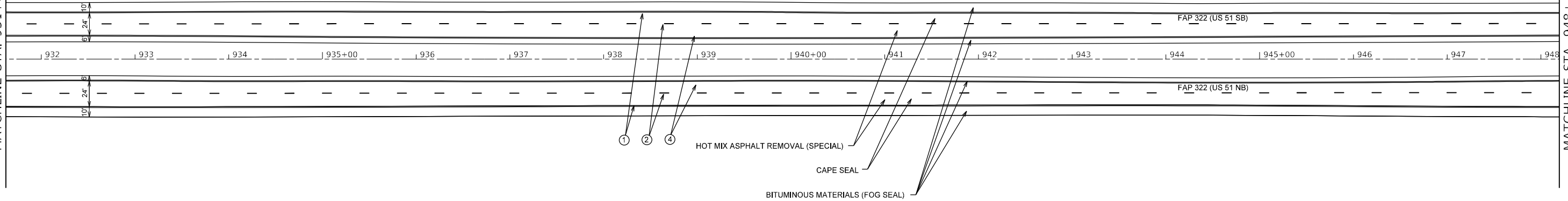
F.A.P. RTE.	SECTION	COUNTY	TOTAL SHEETS	SHEET NO.
*	(45) Q	CHRSTIAN	32	21
CONTRACT NO. 72L88				
ILLINOIS FED. AID PROJECT				

*322 (US 51)



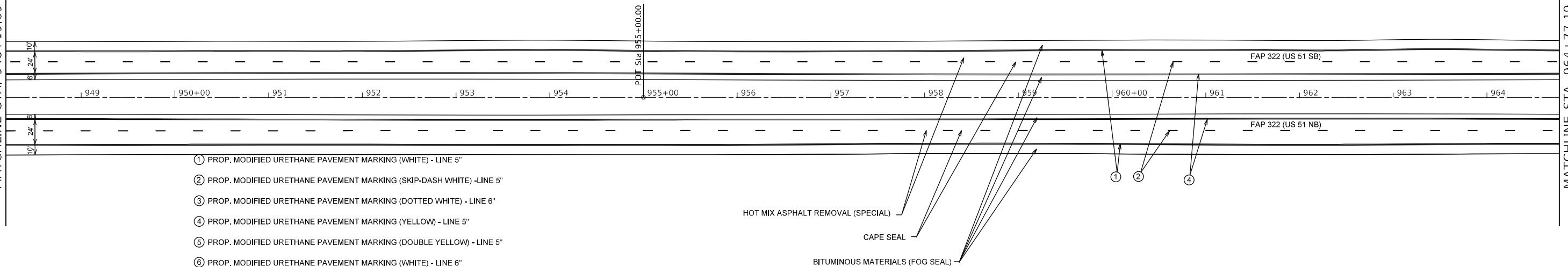
MATCHLINE STA. 931+62.19

MATCHLINE STA. 948+19.69



MATCHLINE STA. 948+19.69

MATCHLINE STA. 964+77.19



- ① PROP. MODIFIED URETHANE PAVEMENT MARKING (WHITE) - LINE 5"
- ② PROP. MODIFIED URETHANE PAVEMENT MARKING (SKIP-DASH WHITE) -LINE 5"
- ③ PROP. MODIFIED URETHANE PAVEMENT MARKING (DOTTED WHITE) - LINE 6"
- ④ PROP. MODIFIED URETHANE PAVEMENT MARKING (YELLOW) - LINE 5"
- ⑤ PROP. MODIFIED URETHANE PAVEMENT MARKING (DOUBLE YELLOW) - LINE 5"
- ⑥ PROP. MODIFIED URETHANE PAVEMENT MARKING (WHITE) - LINE 6"
- ⑦ PROP. MODIFIED URETHANE PAVEMENT MARKING (WHITE) - LINE 8"
- ⑧ PROP. MODIFIED URETHANE PAVEMENT MARKING (WHITE) - LINE 12"
- ⑨ PROP. MODIFIED URETHANE PAVEMENT MARKING (WHITE) - LINE 24"
- ⑩ PROP. MODIFIED URETHANE PAVEMENT MARKING - LETTERS & SYMBLOS

MOBILE: Default
FILE Name: p:\p\planroom.dwg:illinois.gov:PHUDOT:Documents\DOT_Offices\District_8\Projects\US51\72L88\CADD\Drawings\CADD\Sheet\PLANS\HEETS\1.dgn

USER NAME = pasleyb	DESIGNED -	REVISED -
PLOT SCALE = 110.0511' / in.	DRAWN -	REVISED -
PLOT DATE = 12/11/2020	CHECKED -	REVISED -
	DATE -	REVISED -

**STATE OF ILLINOIS
DEPARTMENT OF TRANSPORTATION**

PLAN SHEETS

SCALE: SHEET OF SHEETS STA. 7 TO STA. 9

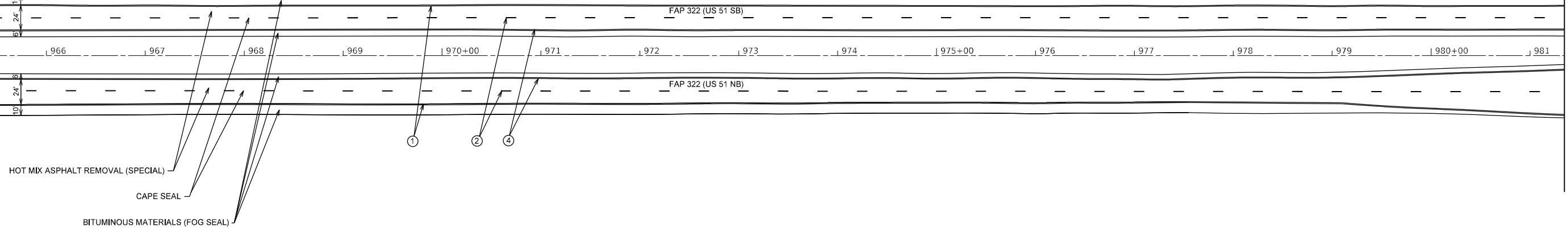
F.A.P. RTE.	SECTION	COUNTY	TOTAL SHEETS	SHEET NO.
*	(45) Q	CHRSTIAN	32	22
CONTRACT NO. 72L88				
ILLINOIS FED. AID PROJECT				

*322 (US 51)



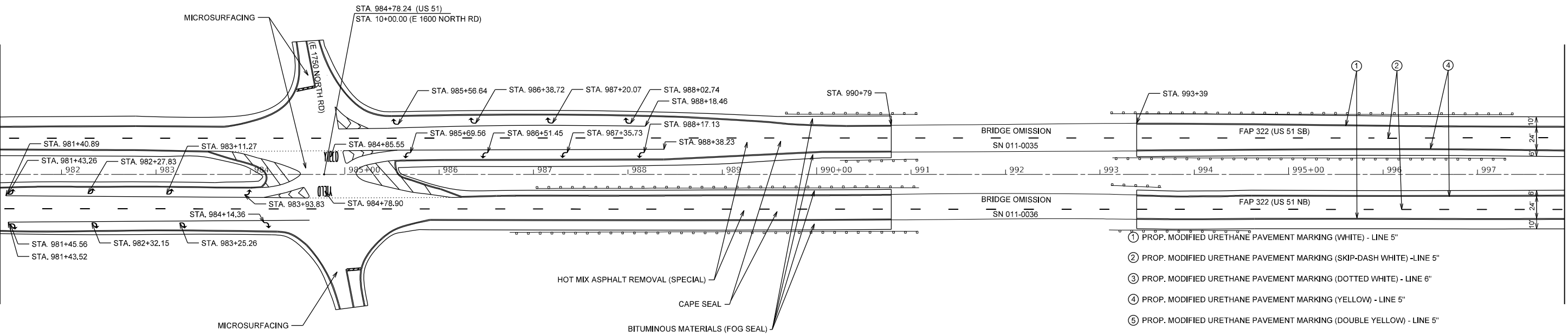
MATCHLINE STA. 964+77.19

MATCHLINE STA. 981+34.69



MATCHLINE STA. 981+34.69

MATCHLINE STA. 997+92.19



- ① PROP. MODIFIED URETHANE PAVEMENT MARKING (WHITE) - LINE 5"
- ② PROP. MODIFIED URETHANE PAVEMENT MARKING (SKIP-DASH WHITE) -LINE 5"
- ③ PROP. MODIFIED URETHANE PAVEMENT MARKING (DOTTED WHITE) - LINE 6"
- ④ PROP. MODIFIED URETHANE PAVEMENT MARKING (YELLOW) - LINE 5"
- ⑤ PROP. MODIFIED URETHANE PAVEMENT MARKING (DOUBLE YELLOW) - LINE 5"
- ⑥ PROP. MODIFIED URETHANE PAVEMENT MARKING (WHITE) - LINE 6"
- ⑦ PROP. MODIFIED URETHANE PAVEMENT MARKING (WHITE) - LINE 8"
- ⑧ PROP. MODIFIED URETHANE PAVEMENT MARKING (WHITE) - LINE 12"
- ⑨ PROP. MODIFIED URETHANE PAVEMENT MARKING (WHITE) - LINE 24"
- ⑩ PROP. MODIFIED URETHANE PAVEMENT MARKING - LETTERS & SYMBLOS

MODEL: Default
FILE NAME: \\wulplamroom-dot-illinois.gov\PI\DOT\Documents\DOT_Offices\Bahr\0672\88\CAD\Drawn\CAD\Drawn\PLANS\SHEETS1.dgn

USER NAME = pasleyb	DESIGNED -	REVISED -
DRAWN -	REVISED -	
PLOT SCALE = 1:10,207.6' / in.	CHECKED -	REVISED -
PLOT DATE = 12/11/2020	DATE -	REVISED -

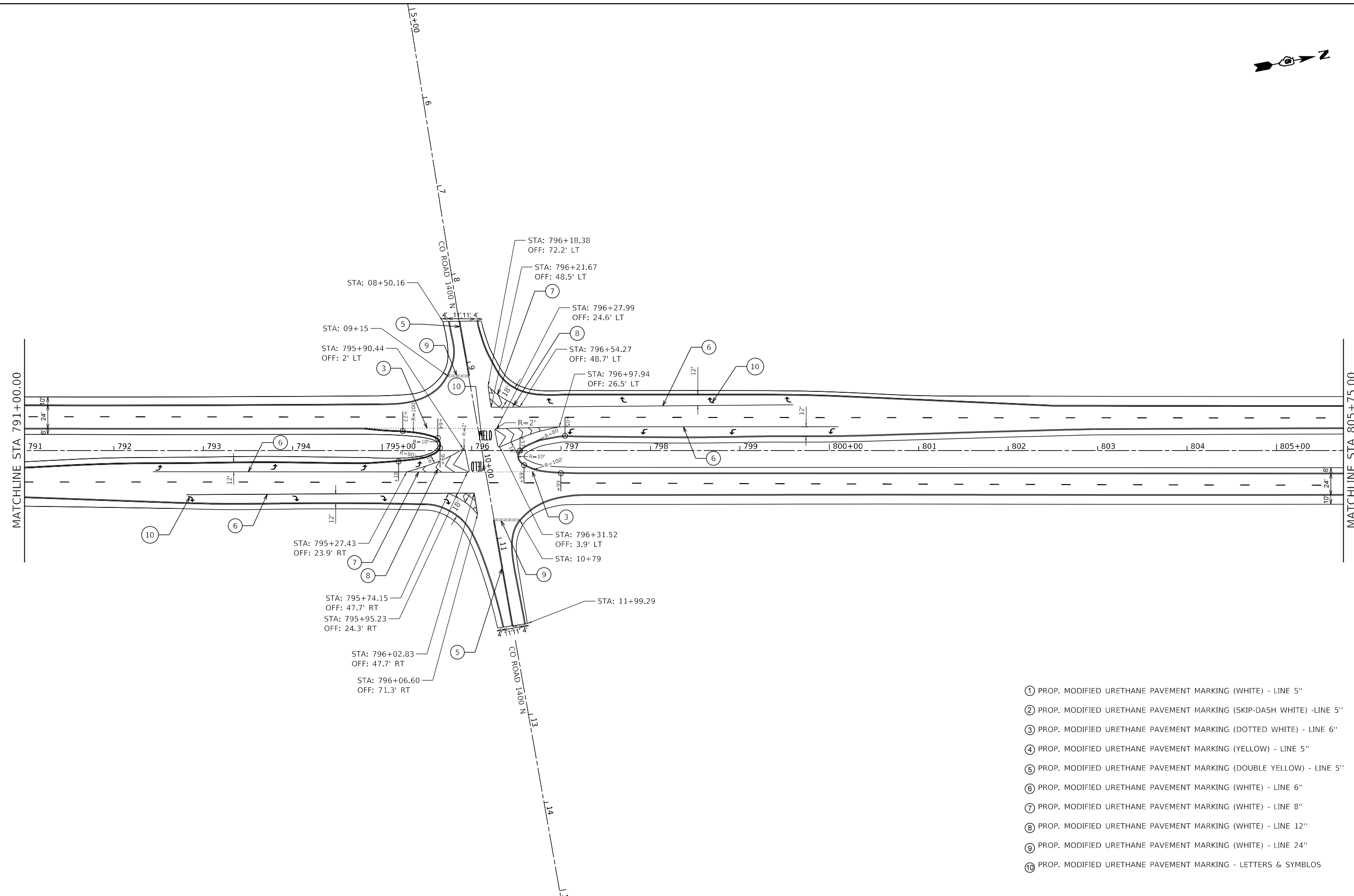
**STATE OF ILLINOIS
DEPARTMENT OF TRANSPORTATION**

PLAN SHEETS

SCALE: SHEET 8 OF 9 SHEETS STA. TO STA.

F.A.P. RTE.	SECTION	COUNTY	TOTAL SHEETS	SHEET NO.
*	(45) Q	CHRSTIAN	32	23
CONTRACT NO. 72L88				
ILLINOIS FED. AID PROJECT				

*322 (US 51)



- ① PROP. MODIFIED URETHANE PAVEMENT MARKING (WHITE) - LINE 5"
- ② PROP. MODIFIED URETHANE PAVEMENT MARKING (SKIP-DASH WHITE) - LINE 5"
- ③ PROP. MODIFIED URETHANE PAVEMENT MARKING (DOTTED WHITE) - LINE 6"
- ④ PROP. MODIFIED URETHANE PAVEMENT MARKING (YELLOW) - LINE 5"
- ⑤ PROP. MODIFIED URETHANE PAVEMENT MARKING (DOUBLE YELLOW) - LINE 5"
- ⑥ PROP. MODIFIED URETHANE PAVEMENT MARKING (WHITE) - LINE 6"
- ⑦ PROP. MODIFIED URETHANE PAVEMENT MARKING (WHITE) - LINE 8"
- ⑧ PROP. MODIFIED URETHANE PAVEMENT MARKING (WHITE) - LINE 12"
- ⑨ PROP. MODIFIED URETHANE PAVEMENT MARKING (WHITE) - LINE 24"
- ⑩ PROP. MODIFIED URETHANE PAVEMENT MARKING - LETTERS & SYMBLOS

MODEL: Default
 FILE: \\mdele_pva\glb\arccon\dot_illinois\pva\DOT\Documents\DOT_Offices\Bartlett_6\Projects\072188\CADD\Bartlett_6\DOT\INTERSECTION_DETAILS\INT2.dgn

USER NAME = pasleyo	DESIGNED -	REVISED -
	DRAWN -	REVISED -
PLOT SCALE = 100.0410' / in.	CHECKED -	REVISED -
PLOT DATE = 12/11/2020	DATE -	REVISED -

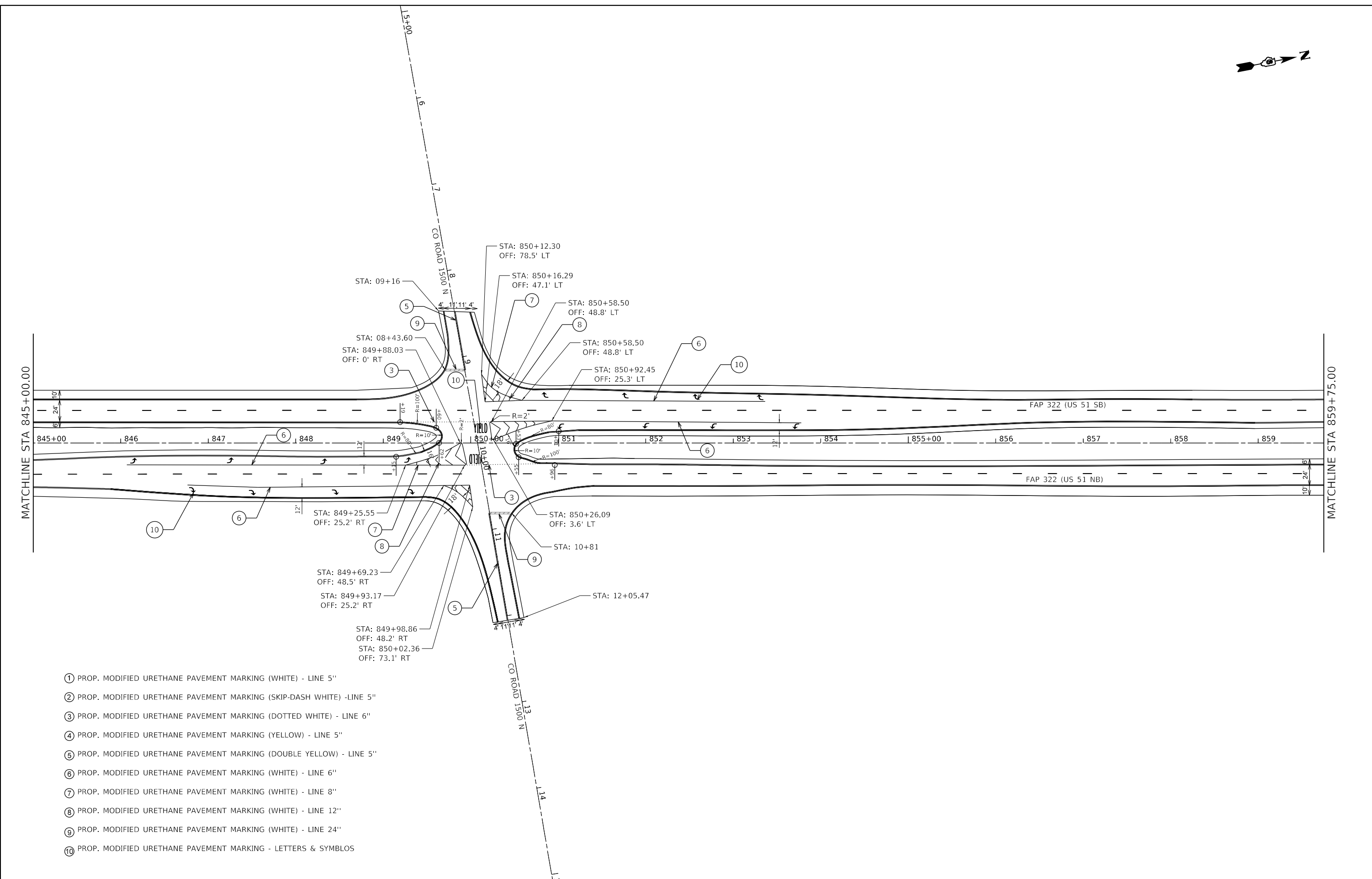
STATE OF ILLINOIS
DEPARTMENT OF TRANSPORTATION

INTERSECTION DETAILS

SCALE: SHEET 3 OF 6 SHEETS STA. TO STA.

F.A.P. RTE.	SECTION	COUNTY	TOTAL SHEETS	SHEET NO.
*	(45) Q	CHRISTIAN	32	27
CONTRACT NO. 72L88				

*322 (US 51)



- ① PROP. MODIFIED URETHANE PAVEMENT MARKING (WHITE) - LINE 5"
- ② PROP. MODIFIED URETHANE PAVEMENT MARKING (SKIP-DASH WHITE) -LINE 5"
- ③ PROP. MODIFIED URETHANE PAVEMENT MARKING (DOTTED WHITE) - LINE 6"
- ④ PROP. MODIFIED URETHANE PAVEMENT MARKING (YELLOW) - LINE 5"
- ⑤ PROP. MODIFIED URETHANE PAVEMENT MARKING (DOUBLE YELLOW) - LINE 5"
- ⑥ PROP. MODIFIED URETHANE PAVEMENT MARKING (WHITE) - LINE 6"
- ⑦ PROP. MODIFIED URETHANE PAVEMENT MARKING (WHITE) - LINE 8"
- ⑧ PROP. MODIFIED URETHANE PAVEMENT MARKING (WHITE) - LINE 12"
- ⑨ PROP. MODIFIED URETHANE PAVEMENT MARKING (WHITE) - LINE 24"
- ⑩ PROP. MODIFIED URETHANE PAVEMENT MARKING - LETTERS & SYMBLOS

MODEL: Default
 FILE NAME: p:\projects\dot\illinois\p\p\p\DOT\Documents\DOT - Offices\District 6\Projects\DOT\72L88\CAD\Drawings\DOT\72L88-INTERSECTION-DETAILS\INT6.dwg

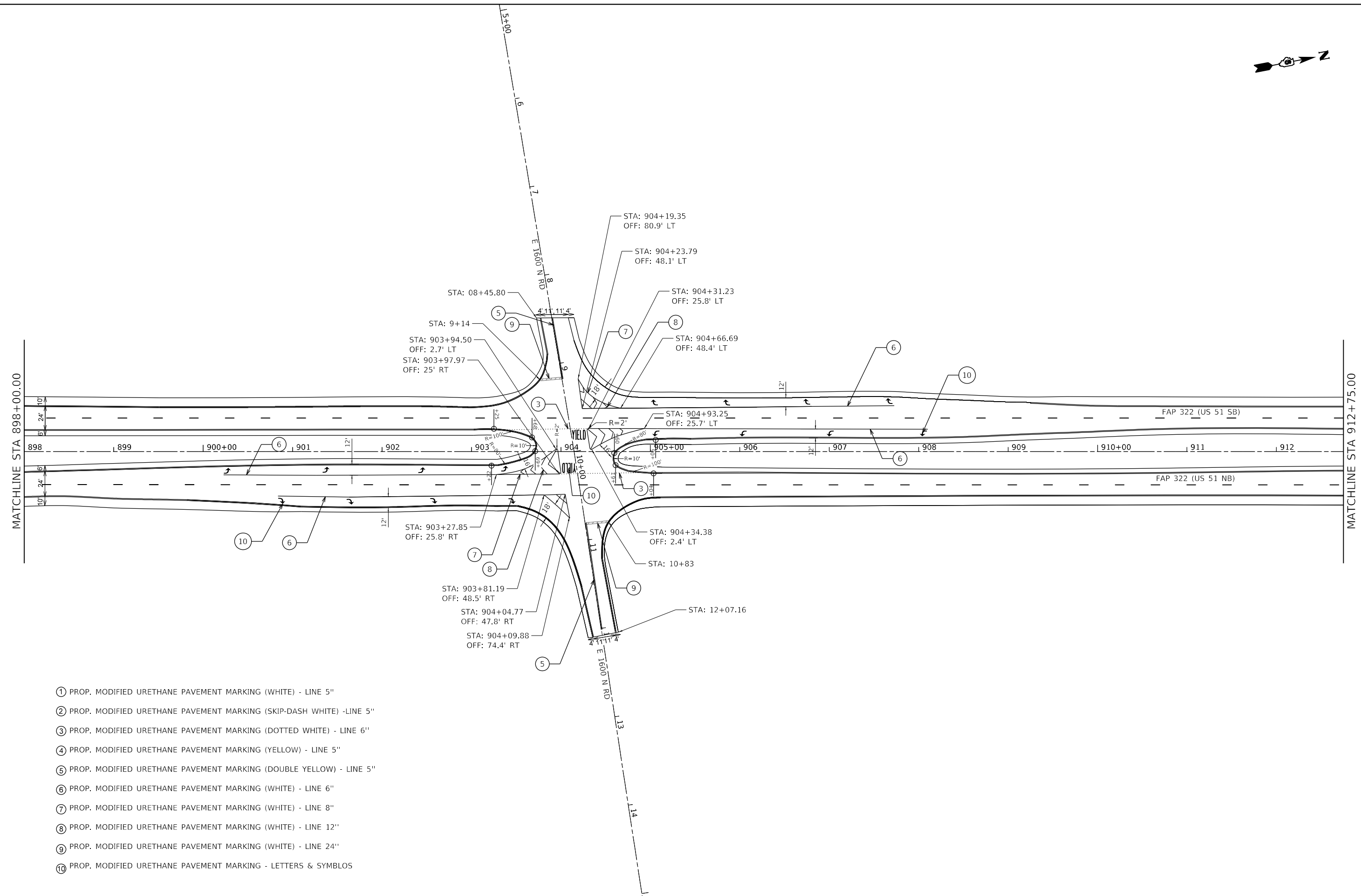
USER NAME = pasleyb	DESIGNED -	REVISED -
	DRAWN -	REVISED -
PLOT SCALE = 100.2254' / in.	CHECKED -	REVISED -
PLOT DATE = 12/11/2020	DATE -	REVISED -

**STATE OF ILLINOIS
DEPARTMENT OF TRANSPORTATION**

INTERSECTIONS DETAILS			
SCALE:	SHEET 4	OF 6 SHEETS	STA. TO STA.

F.A.P. RTE.	SECTION	COUNTY	TOTAL SHEETS	SHEET NO.
*	(45) Q	CHRISTIAN	32	28
CONTRACT NO. 72L88				
ILLINOIS FED. AID PROJECT				

* 322 (US 51)



- ① PROP. MODIFIED URETHANE PAVEMENT MARKING (WHITE) - LINE 5"
- ② PROP. MODIFIED URETHANE PAVEMENT MARKING (SKIP-DASH WHITE) -LINE 5"
- ③ PROP. MODIFIED URETHANE PAVEMENT MARKING (DOTTED WHITE) - LINE 6"
- ④ PROP. MODIFIED URETHANE PAVEMENT MARKING (YELLOW) - LINE 5"
- ⑤ PROP. MODIFIED URETHANE PAVEMENT MARKING (DOUBLE YELLOW) - LINE 5"
- ⑥ PROP. MODIFIED URETHANE PAVEMENT MARKING (WHITE) - LINE 6"
- ⑦ PROP. MODIFIED URETHANE PAVEMENT MARKING (WHITE) - LINE 8"
- ⑧ PROP. MODIFIED URETHANE PAVEMENT MARKING (WHITE) - LINE 12"
- ⑨ PROP. MODIFIED URETHANE PAVEMENT MARKING (WHITE) - LINE 24"
- ⑩ PROP. MODIFIED URETHANE PAVEMENT MARKING - LETTERS & SYMBLOS

MODEL: D:\draft
 FILE NAME: p:\pub\mrcm\dat\illinois\gov\pww\DOT\Documents\DOT_Offices\District_6\Projects\0672L88\INTERSECTION_DETAILS\INT5.dgn

USER NAME = pasleyb	DESIGNED -	REVISED -
	DRAWN -	REVISED -
PLOT SCALE = 99.9965' / in.	CHECKED -	REVISED -
PLOT DATE = 12/11/2020	DATE -	REVISED -

**STATE OF ILLINOIS
DEPARTMENT OF TRANSPORTATION**

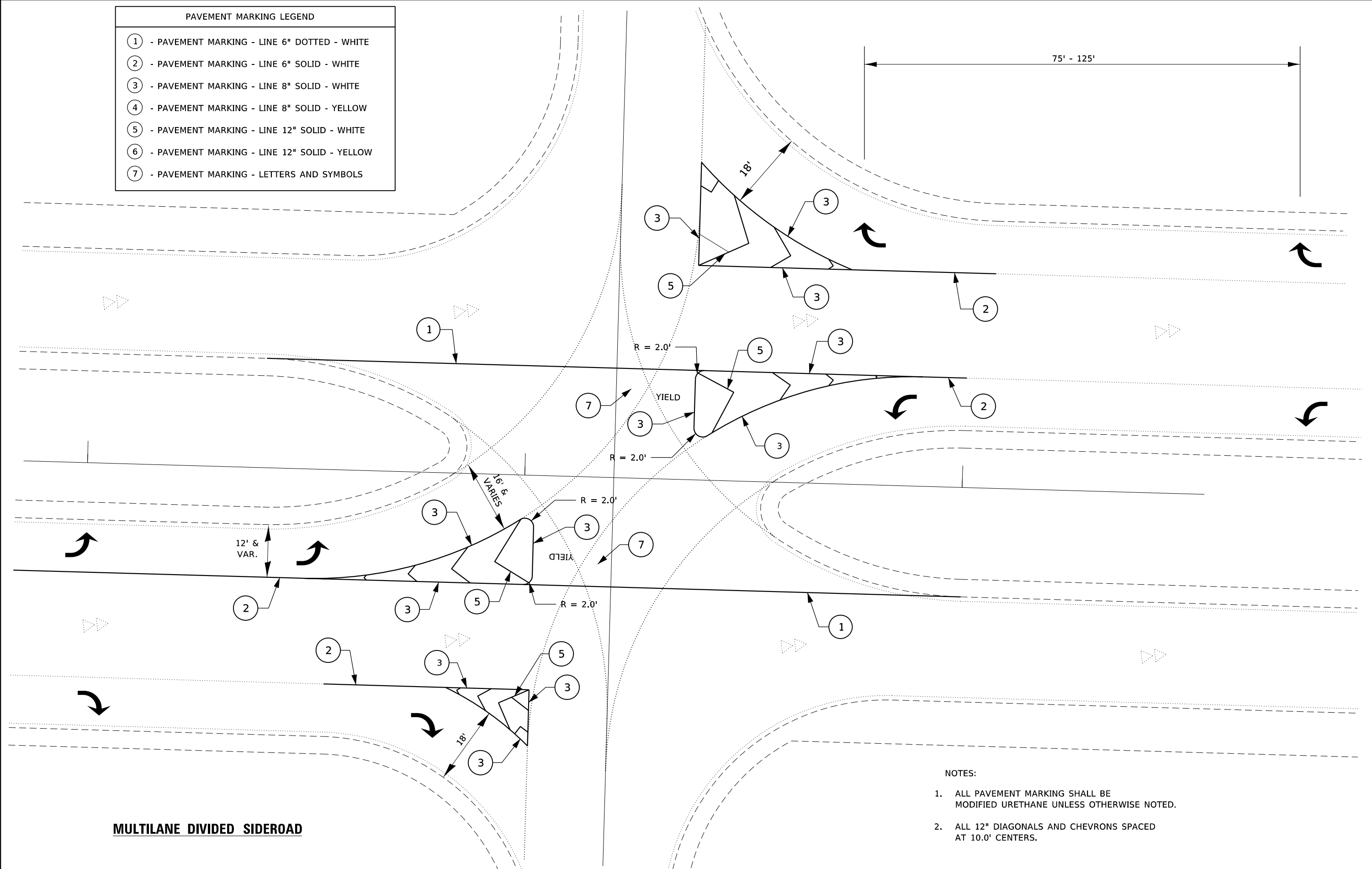
INTERSECTION DETAILS

SCALE: SHEET 5 OF 6 SHEETS STA. TO STA.

F.A.P. RTE.	SECTION	COUNTY	TOTAL SHEETS	SHEET NO.
*	(45) Q	CHRISTIAN	32	29
			CONTRACT NO. 72L88	

*322 (US 51)

PAVEMENT MARKING LEGEND	
①	- PAVEMENT MARKING - LINE 6" DOTTED - WHITE
②	- PAVEMENT MARKING - LINE 6" SOLID - WHITE
③	- PAVEMENT MARKING - LINE 8" SOLID - WHITE
④	- PAVEMENT MARKING - LINE 8" SOLID - YELLOW
⑤	- PAVEMENT MARKING - LINE 12" SOLID - WHITE
⑥	- PAVEMENT MARKING - LINE 12" SOLID - YELLOW
⑦	- PAVEMENT MARKING - LETTERS AND SYMBOLS



MULTILANE DIVIDED SIDEROAD

- NOTES:
1. ALL PAVEMENT MARKING SHALL BE MODIFIED URETHANE UNLESS OTHERWISE NOTED.
 2. ALL 12" DIAGONALS AND CHEVRONS SPACED AT 10.0' CENTERS.

MODEL: D6.dwg
 FILE NAME: pav\pavmark.dwg
 PROJECT: 72L88
 DRAWN: pasleyb
 CHECKED: pasleyb
 DATE: 12/11/2020

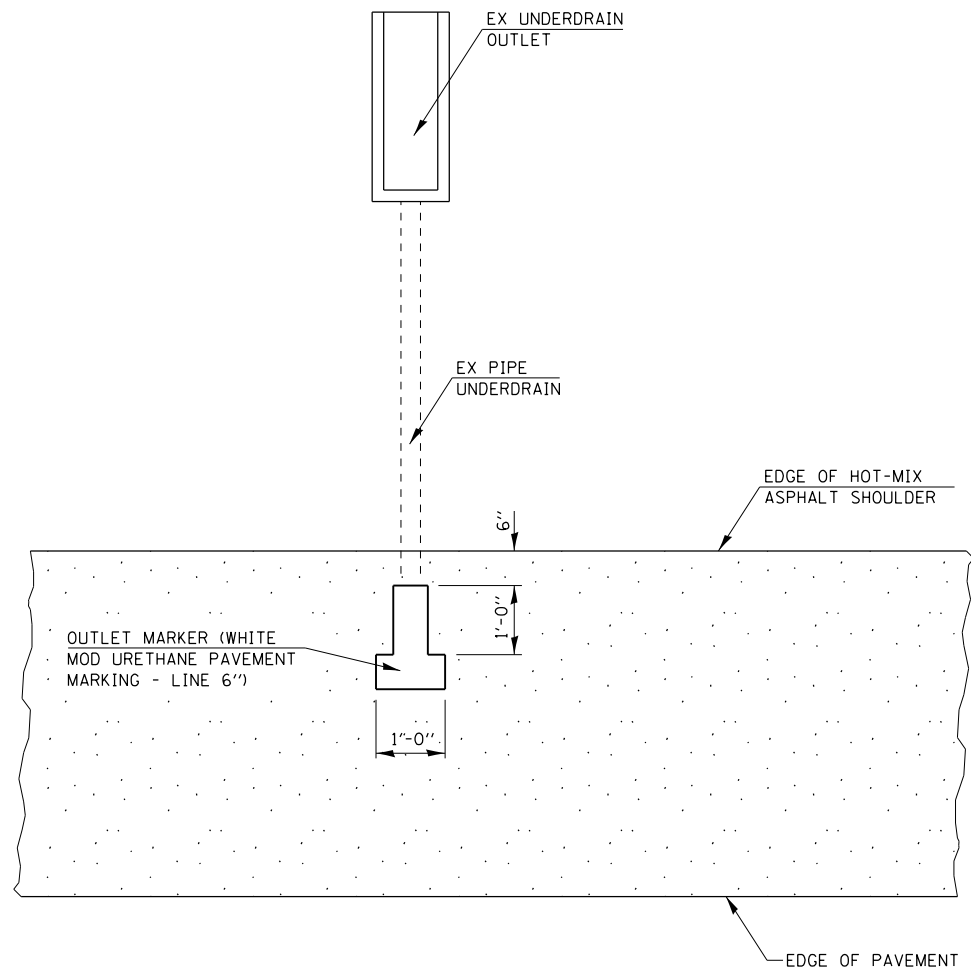
780-PAVEMENT MARKING STANDARDS.DGN	USER NAME = pasleyb	DESIGNED -	REVISED -
	PLOT SCALE = 40.0896" / in.	DRAWN -	REVISED -
	PLOT DATE = 12/11/2020	CHECKED -	REVISED -
		DATE -	REVISED -

STATE OF ILLINOIS
DEPARTMENT OF TRANSPORTATION

D6 PAVEMENT MARKING STANDARD			
SCALE:	SHEET	OF SHEETS	STA. TO STA.

F.A.P. RTE.	SECTION	COUNTY	TOTAL SHEETS	SHEET NO.
*	(45) Q	CHRISTIAN	32	31
CONTRACT NO. 72L88				
ILLINOIS FED. AID PROJECT				

* 322 (US 51)



PLAN FOR UNDERDRAIN OUTLET MARKER

MODEL: Detail
 FILE NAME: p:\uplanroom.dwg
 PROJECT: P:\DOT\Documents\DOT_Offices\Detail\610101\610101.dwg

USER NAME = pasleyo	DESIGNED - _____	REVISED - _____
	DRAWN - _____	REVISED - _____
PLOT SCALE = 99.9954 ' / in.	CHECKED - _____	REVISED - _____
PLOT DATE = 12/11/2020	DATE - _____	REVISED - _____

**STATE OF ILLINOIS
DEPARTMENT OF TRANSPORTATION**

GENERAL DETAILS

SCALE: NTS SHEET 1 OF 1 SHEETS STA. N/A TO STA. N/A

F.A.P. RTE.	SECTION	COUNTY	TOTAL SHEETS	SHEET NO.
*	(45) Q	CHRISTIAN	32	32