

CODE NO.	ITEM	UNIT	TOTAL QUANTITY	CONSTRUCTION CODE	
				07E0 100% STATE	07A0 100% STATE
				BRIDGE	BRIDGE
				0047	0047
		S.N. 050-0210/0211	S.N. 050-0212/0213		
63301210	REMOVE AND REERECT STEEL PLATE BEAM GUARDRAIL, TYPE A	FOOT	700		700
63302400	REMOVE AND REERECT TRAFFIC BARRIER TERMINALS, TYPE 5	EACH	1		1
63302700	REMOVE AND REERECT TRAFFIC BARRIER TERMINALS, TYPE 6	EACH	6		6
67000400	ENGINEER'S FIELD OFFICE, TYPE A	CAL MO	6		6
67100100	MOBILIZATION	L SUM	1	0.25	0.75
70100207	TRAFFIC CONTROL AND PROTECTION, STANDARD 701402	EACH	2		2
70107025	CHANGEABLE MESSAGE SIGN	CAL DA	28		28
70300100	SHORT TERM PAVEMENT MARKING	FOOT	800		800
70300150	SHORT TERM PAVEMENT MARKING REMOVAL	SQ FT	264		264
70400100	TEMPORARY CONCRETE BARRIER	FOOT	2250	1000	1250
70400200	RELOCATE TEMPORARY CONCRETE BARRIER	FOOT	2250	1000	1250
70600250	IMPACT ATTENUATORS, TEMPORARY (NON- REDIRECTIVE), TEST LEVEL 3	EACH	4		4
70600350	IMPACT ATTENUATORS, RELOCATE (NON- REDIRECTIVE), TEST LEVEL 3	EACH	4		4
* 78008210	POLYUREA PAVEMENT MARKING TYPE I - LINE 4"	FOOT	6748		6748

\*= SPECIALTY ITEM

MODEL: Default  
FILE: M:\GIS\Projects\GIS\Projects\DOT - Offices\District 3\Project\03366L17\CD\03366L17-cover.dwg

USER NAME = woodshankr	DESIGNED - RW	REVISED -
PLOT SCALE = 100.0000' / in.	DRAWN - RW	REVISED -
PLOT DATE = 12/17/2020	CHECKED - EM	REVISED -
	DATE - 8/5/2020	REVISED -

**STATE OF ILLINOIS  
DEPARTMENT OF TRANSPORTATION**

**SUMMARY OF QUANTITIES**

SCALE: SHEET 2 OF 3 SHEETS STA. TO STA.

F.A.I. RTE.	SECTION	COUNTY	TOTAL SHEETS	SHEET NO.
39	(50-1VB & 50-1B)BRR	LASALLE	30	4
CONTRACT NO. 66L17				
ILLINOIS FED. AID PROJECT				

SCHEDULE  
TRAFFIC CONTROL

LOCATION	TRAFFIC CONTROL AND PROTECTION STANDARD 701402	TEMPORARY RUMBLE STRIPS (SPECIAL)	CHANGEABLE MESSAGE SIGN
	EACH	EACH	CAL DAY
NORTHBOUND LANES	1	4	14
SOUTHBOUND LANES	1	4	14
<b>TOTAL</b>	<b>2</b>	<b>8</b>	<b>28</b>

SCHEDULE - TEMPORARY CONCRETE BARRIER

LOCATION	TEMPORARY CONCRETE BARRIER	RELOCATE TEMPORARY CONCRETE BARRIER	IMPACT ATTENUATORS, TEMPORARY (NON-REDIRECTIVE), TEST LEVEL 3	IMPACT ATTENUATOR RELOCATION (NON-REDIRECTIVE) TEST LEVEL 3
	FOOT	FOOT	FOOT	FOOT
<b>STRUCTURE NO. 050-0210 (SB)</b>				
STAGE I	500		1	
STAGE II		500		1
<b>STRUCTURE NO. 050-0211 (NB)</b>				
STAGE I	500		1	
STAGE II		500		1
<b>STRUCTURE NO. 050-0212 (SB)</b>				
STAGE I	625		1	
STAGE II		625		1
<b>STRUCTURE NO. 050-0213 (NB)</b>				
STAGE I	625		1	
STAGE II		625		1
<b>TOTAL</b>	<b>2250</b>	<b>2250</b>	<b>4</b>	<b>4</b>

SCHEDULE - GUARDRAIL

LOCATION	REMOVE AND REERECT RAIL ELEMENT OF EXISTING GUARDRAIL	REMOVE AND REERECT STEEL PLATE BEAM GUARDRAIL TYPE A	REMOVE AND REERECT TRAFFIC BARRIER TERMINALS TYPE 6	REMOVE AND REERECT TRAFFIC BARRIER TERMINALS TYPE 5	GUARDRAIL MARKERS TYPE A	LINEAR DELINEATOR PANELS 4 INCH
	FOOT	FOOT	EACH	EACH	EACH	EACH
<b>STRUCTURE NO. 050-0210 (SB)</b>						
APPROACH		200	2		16	16
DEPARTURE						
<b>STRUCTURE NO. 050-0211 (NB)</b>						
APPROACH	30				4	4
DEPARTURE					8	8
<b>STRUCTURE NO. 050-0212 (SB)</b>						
APPROACH		200	2		17	17
DEPARTURE						
<b>STRUCTURE NO. 050-0213 (NB)</b>						
APPROACH		200	2		9	9
DEPARTURE		100		1	13	13
<b>TOTAL</b>	<b>30</b>	<b>700</b>	<b>6</b>	<b>1</b>	<b>67</b>	<b>67</b>

SCHEDULE - PAVEMENT MARKING

LOCATION	PAVEMENT MARKING REMOVAL WATER BLASTING	SHORT-TERM PAVEMENT MARKING	SHORT-TERM PAVEMENT MARKING REMOVAL	POLYUREA PAVEMENT MARKING LINE 4"	POLYUREA PAVEMENT MARKING LINE 6"
	SQ FT	FOOT	SQ FT	FOOT	FOOT
NORTHBOUND LANES	1428	400	132	3374	760
SOUTHBOUND LANES	1428	400	132	3374	760
<b>TOTAL</b>	<b>2856</b>	<b>800</b>	<b>264</b>	<b>6748</b>	<b>1520</b>

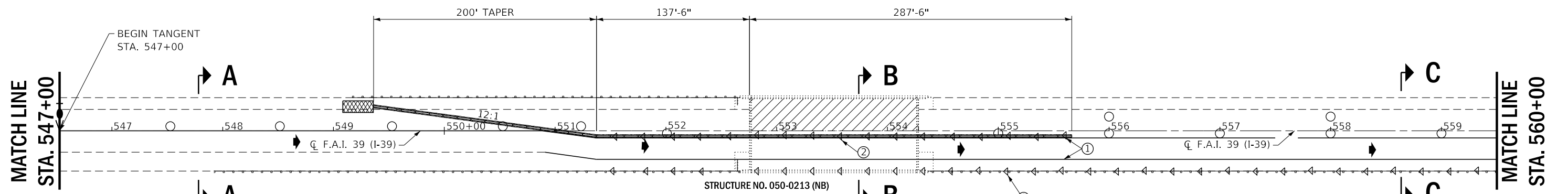
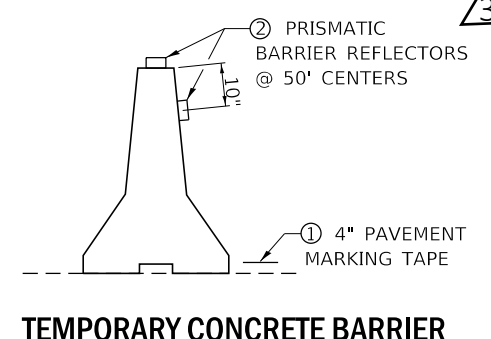
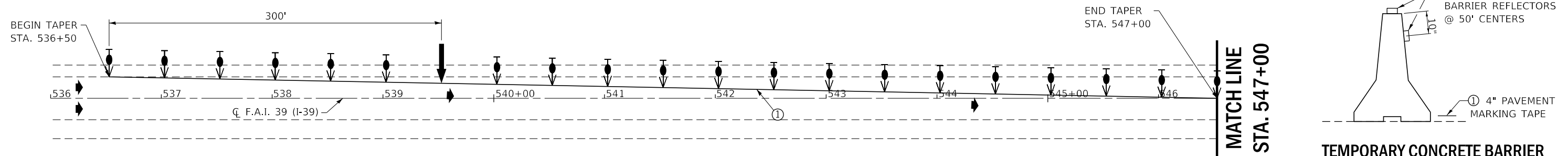
MODEL: Default  
 FILE: \\nas01c.pw.state.il.us\pub\baronm.d\at\links\gov\PIWDOT\Documents\DOT\_Offices\IDirect\_3\Projects\0366L17\Cadd\0366L17-cover.dgn

USER NAME = WOODSHANKRL	DESIGNED - RW	REVISED -
	DRAWN - RW	REVISED -
PLOT SCALE = 100,0000' / in.	CHECKED - EM	REVISED -
PLOT DATE = 2/23/2021	DATE - 8/5/2020	REVISED -

**STATE OF ILLINOIS  
DEPARTMENT OF TRANSPORTATION**

<b>SCHEDULES</b>	
SCALE:	SHEET 1 OF 1 SHEETS STA. TO STA.

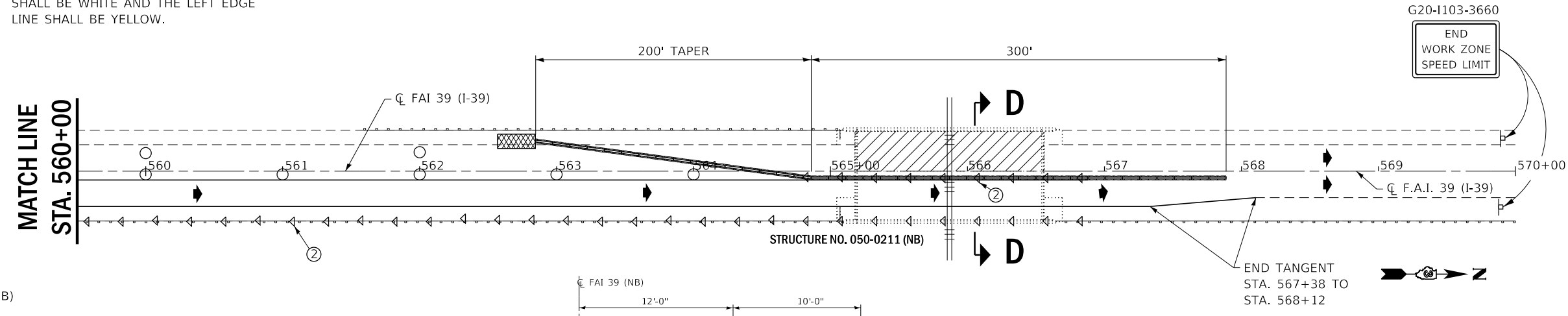
F.A.I. RTE. 39	SECTION (50-1VB & 50-1B)BRR	COUNTY LASALLE	TOTAL SHEETS 30	SHEET NO. 7
CONTRACT NO. 66L17				
ILLINOIS FED. AID PROJECT				



- ① TEMPORARY PAVEMENT MARKING TAPE SHALL BE PLACED THROUGHOUT THE TAPER AND ALONG-SIDE THE WORK AREA. THE RIGHT EDGE LINE SHALL BE WHITE AND THE LEFT EDGE LINE SHALL BE YELLOW.
- ② BARRIER WALL/GUARDRAIL MARKERS AT 25' (7.6 M). MARKERS ON RIGHT SHALL BE CRYSTAL AND MARKERS ON LEFT SHALL BE AMBER.

**SYMBOLS**

- ↑ ARROW BOARD
- ▨ WORK AREA
- ⊢ SIGN
- TRAFFIC CONTROL DRUM WITH
- ▬ TEMPORARY CONCRETE BARRIER
- ◁ MONODIRECTIONAL BARRIER WALL/GUARDRAIL MARKER
- ▩ IMPACT ATTENUATOR



**SECTION A-A**

**SECTION B-B**

**SECTION C-C**

**SECTION D-D**

**GENERAL NOTES**

THIS STANDARD IS USED WHERE AT ANY TIME ANY VEHICLE, EQUIPMENT, WORKERS OR THEIR ACTIVITIES WILL ENCRUSH ON THE PAVEMENT OR ON THE SHOULDER WITHIN 24 (600) OF THE EDGE OF PAVEMENT FOR DAYLIGHT OPERATION EXCEEDING ONE DAY AND WHERE TEMPORARY CONCRETE BARRIER IS UTILIZED.

THIS STANDARD MUST ALWAYS BE USED IN COMBINATION WITH STANDARD 701400.

WHEN WORK IS BEING PERFORMED IN THE LEFT LANE, THE SET UP WOULD BE A MIRROR IMAGE TO WHAT IS SHOWN.

TEMPORARY CONCRETE BARRIER SHALL BE ACCORDING TO STANDARD 704001.

CALCULATE L AS FOLLOWS:

NORMAL POSTED SPEED	FORMULAS
45 MPH OR MORE	ENGLISH L=(W)(S)
	W = WIDTH OF OFFSET IN FEET (METERS).
	S = NORMAL POSTED SPEED IN MPH (KM/H).

MODEL: Default  
 FILE: \\nas01\pub\baronm.d\at\links\pwp\DOT\Documents\DOT - Offices\Director - 3\Projects\033661\17\CADD\033661\17-cover.dgn

USER NAME = WOODSHANKRL	DESIGNED - RW	REVISED -
	DRAWN - RW	REVISED -
PLOT SCALE = 100,0000' / in.	CHECKED - EM	REVISED -
PLOT DATE = 2/23/2021	DATE - 8/5/2020	REVISED -

**STATE OF ILLINOIS  
DEPARTMENT OF TRANSPORTATION**

**TRAFFIC CNTROL AND PROTECTION,  
STANDARD 701402 - STAGE I**

SCALE: SHEET 1 OF 1 SHEETS STA. TO STA.

F.A.I. RTE.	SECTION	COUNTY	TOTAL SHEETS	SHEET NO.
39	(50-1VB & 50-1B)BRR	LASALLE	30	9
CONTRACT NO. 66L17				

