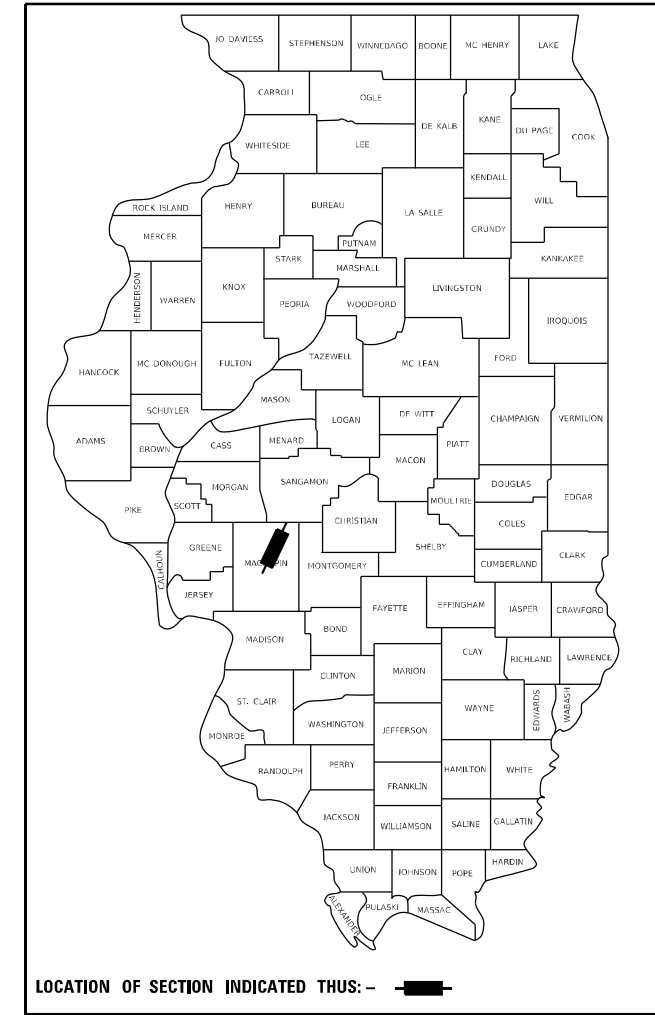


STATE OF ILLINOIS
DEPARTMENT OF TRANSPORTATION

F.A.P. RTE.	SECTION	COUNTY	TOTAL SHEETS	SHEET NO.
662	(F, DX) CJS	MACOUPIN	11	1
		ILLINOIS	CONTRACT NO. 72L90	

D-96-058-20



FOR INDEX OF SHEETS, SEE SHEET NO. 2

HIGHWAY CLASSIFICATION

F.A.P. Route 662 (IL 4)
fr. 0.2 Mi. S of Cambridge Rd. S in GIRARD to
W of Donaldson Rd. / Jones Rd. (NILWOOD)

ADT: 3,040 (2019) PV = 94.37%
DESIGN SPEED: 60 MPH SU = 2.19%
POSTED SPEED: 55 MPH MU = 3.44%

CLASSIFICATION: OTHER PRINCIPLE ARTERIAL

PROPOSED
HIGHWAY PLANS

F.A.P. ROUTE 662 (IL 4)
SECTION (F, DX) CJS
PROJECT NHPP-38JZ(060)
CRACK & JOINT SEALING
MACOUPIN COUNTY

C-96-088-20



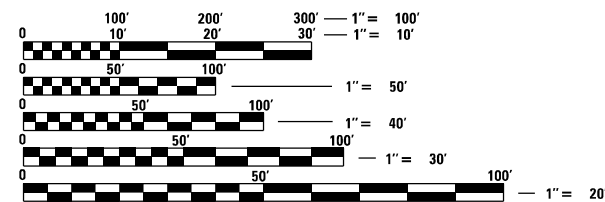
LIMITS OF IMPROVEMENT
BEGINS AT STA. 91+66.63

LIMITS OF IMPROVEMENT
ENDS AT STA. 325+59.48

(STA EQN):
STA 251+59.39 (BK) =
STA 251+67.91 (AH)

SN 059-7009
EX. BOX CULV 9'x6'
STA 159+95.80

SN 059-7010
EX. BOX CULV 9'x5'
STA 197+32.90

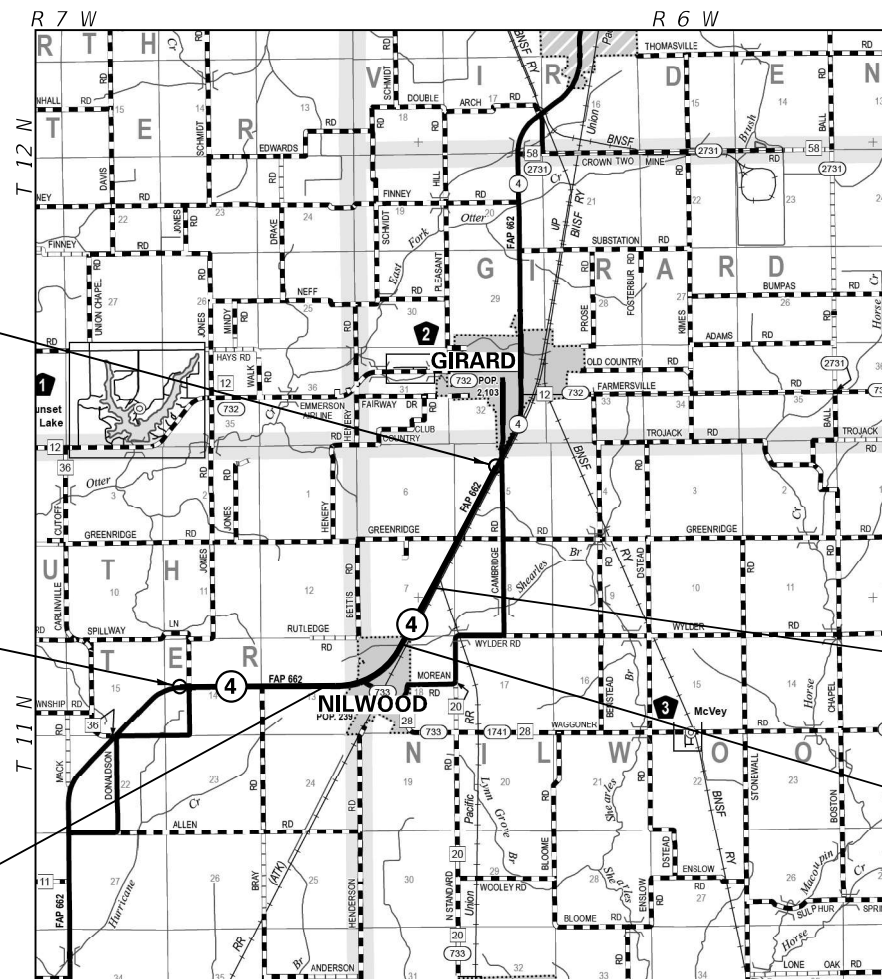


FULL SIZE PLANS HAVE BEEN PREPARED USING STANDARD ENGINEERING SCALES. REDUCED SIZED PLANS WILL NOT CONFORM TO STANDARD SCALES. IN MAKING MEASUREMENTS ON REDUCED PLANS, THE ABOVE SCALES MAY BE USED.

J.U.L.I.E.
JOINT UTILITY LOCATION INFORMATION FOR EXCAVATORS
1-800-892-0123
OR 811

PROJECT ENGINEER: JAY WAVERING (217) 785-9046
PROJECT MANAGER: RENE CABRERA (217) 558-5140

CONTRACT NO. 72L90



GROSS LENGTH = 23,384.33 FT. = 4.43 MILE
NET LENGTH = 23,384.33 FT. = 4.43 MILE

STATE OF ILLINOIS
DEPARTMENT OF TRANSPORTATION

SUBMITTED December 10, 2020

Jay P. Mager
REGIONAL ENGINEER

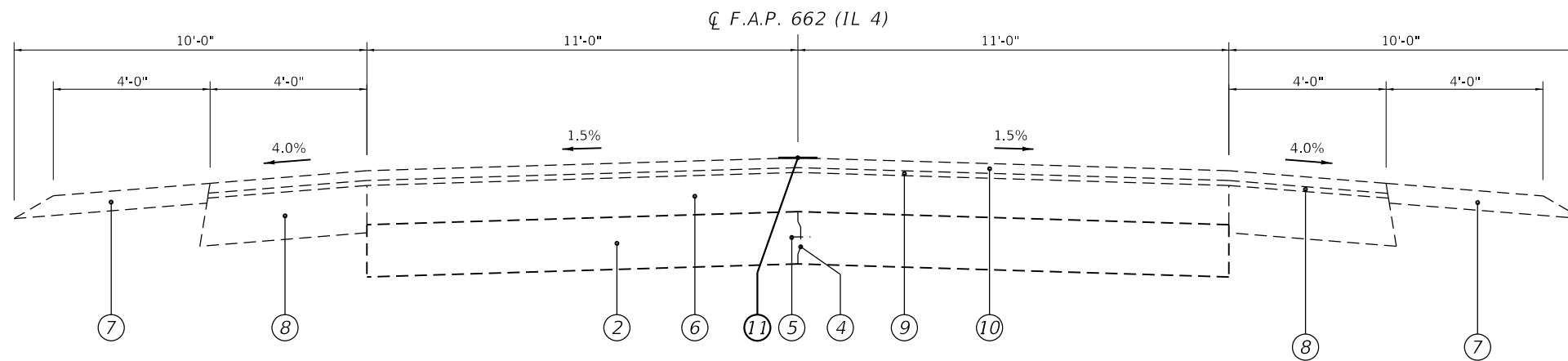
January 29, 2021

Samuel J. ...
ENGINEER OF DESIGN AND ENVIRONMENT

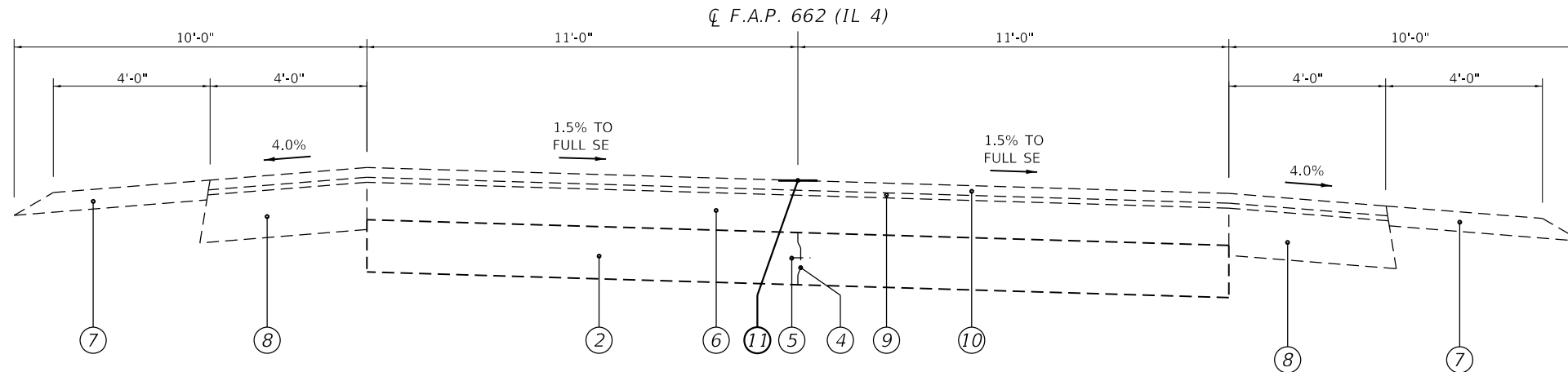
January 29, 2021

Samuel J. ...
DIRECTOR OF HIGHWAYS PROJECT IMPLEMENTATION

PRINTED BY THE AUTHORITY
OF THE STATE OF ILLINOIS



(1) STA 91+66.63 TO STA 201+05.33 [10,938.70']



(2) STA 201+05.33 TO STA 241+56.73 [4,051.40']

<u>LEGEND</u>	
①	EXIST. SUB-BASE GRANULAR MATERIAL, TYPE A
②	EXIST. P.C.C. PAVEMENT, 8"
③	EXIST. P.C.C. BASE COURSE WINDENING, 8"
④	EXIST. LONGITUDINAL METAL JOINT
⑤	EXIST. STEEL TIE BAR
⑥	EXIST. BITUMINOUS OVERLAY, 4¼" TO 6¼"
⑦	EXIST. AGGREGATE SHOULDER
⑧	EXIST. HMA SHOULDER, 7¼"
⑨	EXIST. HMA LEVELING BINDER, ¾"
⑩	EXIST. HMA SURFACE COURSE, 1½"
⑪	PROP. CRACK SEAL

MODEL: Default
 FILE: h:\mfc\p\pub\haronom.dwg
 PROJECT: 662 (IL 4)
 SHEET: 5 OF 11
 DATE: 11/30/2020

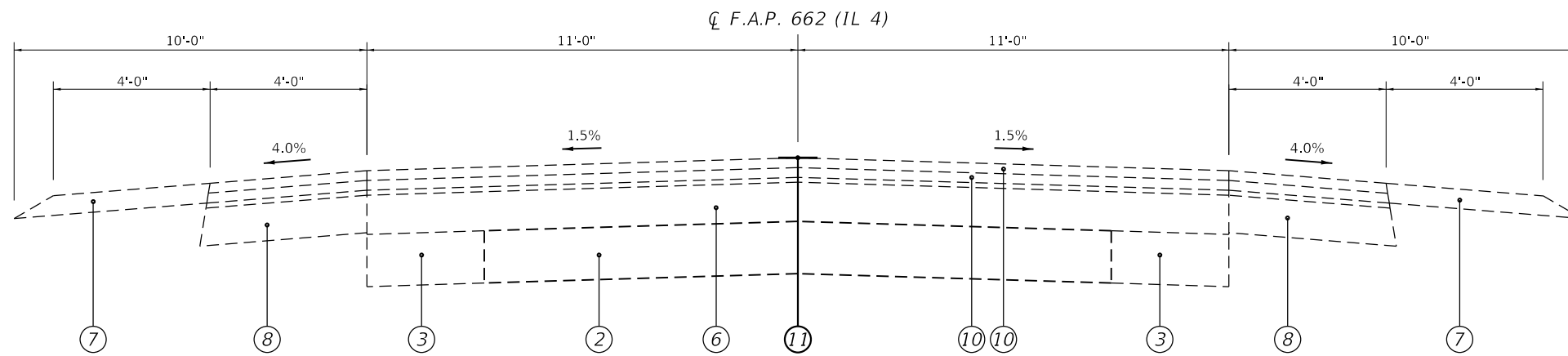
USER NAME = cabrerars	DESIGNED - BAB	REVISED -
	DRAWN - BAB	REVISED -
PLOT SCALE = 100,0000' / in.	CHECKED - RSC	REVISED -
PLOT DATE = 11/30/2020	DATE -	REVISED -

**STATE OF ILLINOIS
DEPARTMENT OF TRANSPORTATION**

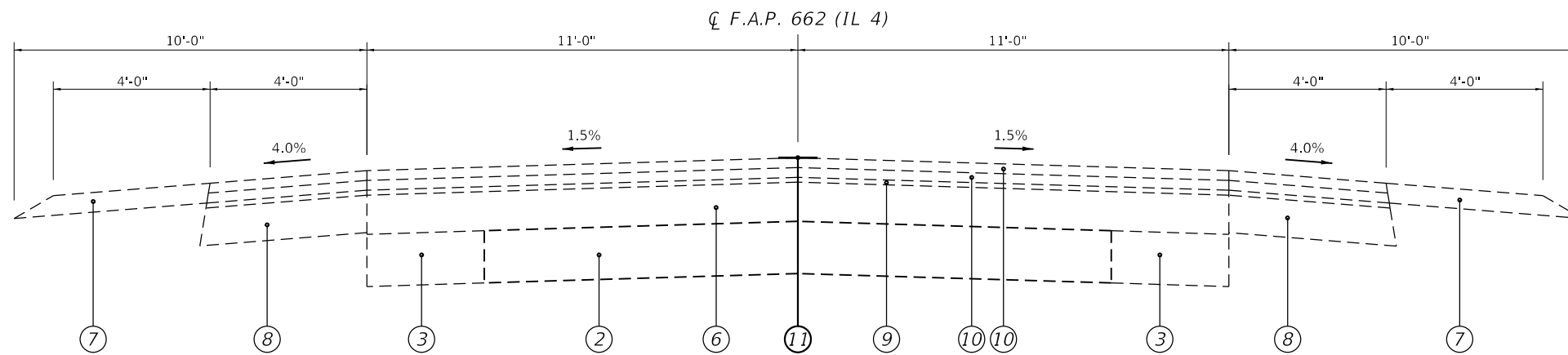
TYPICAL SECTIONS

SCALE: NTS SHEET 1 OF 3 SHEETS STA. 91+66.63 TO STA. 241+56.73

F.A.P. RTE.	SECTION	COUNTY	TOTAL SHEETS	SHEET NO.
662	(F, DX) CJS	MACOUPIN	11	5
CONTRACT NO. 72L90				
ILLINOIS FED. AID PROJECT				



(3) STA 241+56.73 TO STA 250+00.00 [843.27']



(4) STA 250+00.00 TO STA 251+59.39 (BK) [159.39']

(5) STA 251+67.91 (AH) TO STA 320+00.00 [6,832.09']

(STA EQN):
 STA 251+59.39 (BK) =
 STA 251+67.91 (AH)

<u>LEGEND</u>	
①	EXIST. SUB-BASE GRANULAR MATERIAL, TYPE A
②	EXIST. P.C.C. PAVEMENT, 8"
③	EXIST. P.C.C. BASE COURSE WIDENING, 8"
④	EXIST. LONGITUDINAL METAL JOINT
⑤	EXIST. STEEL TIE BAR
⑥	EXIST. BITUMINOUS OVERLAY, 4¼" TO 6¼"
⑦	EXIST. AGGREGATE SHOULDER
⑧	EXIST. HMA SHOULDER, 7¼"
⑨	EXIST. HMA LEVELING BINDER, ¾"
⑩	EXIST. HMA SURFACE COURSE, 1½"
⑪	PROP. CRACK SEAL

MODEL: Default
 FILE: h:\mfc_2020\p10\p10\mfc_2020\p10\p10\DOT Documents\DOT Office\Drawings\Projects\662\IL 4\CADD\Drawings\662\241+56.73-250+00.00.dwg

USER NAME = cabrerars	DESIGNED - BAB	REVISED -
	DRAWN - BAB	REVISED -
PLOT SCALE = 100.0000' / in.	CHECKED - RSC	REVISED -
PLOT DATE = 11/30/2020	DATE -	REVISED -

**STATE OF ILLINOIS
 DEPARTMENT OF TRANSPORTATION**

TYPICAL SECTIONS

SCALE: NTS SHEET 2 OF 3 SHEETS STA. 241+56.73 TO STA. 320+00.00

F.A.P. RTE.	SECTION	COUNTY	TOTAL SHEETS	SHEET NO.
662	(F, DX) CJS	MACOUPIN	11	6
CONTRACT NO. 72L90				
ILLINOIS FED. AID PROJECT				



MODEL: Default
 FILE: \\nas01\proj\pub\baronm\dat\illinois\pwr\WIDDOT\Documents\DOT_Offices\Illin\ct 6\Projects\0672190\CADD\Drawings\0672190-01-Plan.dwg

USER NAME = cabrerars	DESIGNED - BAB	REVISED -
DRAWN - BAB	REVISIONS -	
PLOT SCALE = 200.0000' / in.	CHECKED - RSC	REVISED -
PLOT DATE = 11/30/2020	DATE -	REVISED -

STATE OF ILLINOIS
DEPARTMENT OF TRANSPORTATION

PLAN VIEW	
SCALE: 100	SHEET 2 OF 4 SHEETS
STA. 151+00.00 TO STA. 211+00.00	

F.A.P. RTE. 662	SECTION (F, DX) CJS	COUNTY MACOUPIN	TOTAL SHEETS 11	SHEET NO. 9
ILLINOIS FED. AID PROJECT				

CONTRACT NO. 72L90

MODEL: Default
 FILE: \\nrcs\pub\baronm.dwg
 PROJECT: \\nrcs\pub\baronm.dwg
 OFFICE: \\nrcs\pub\baronm.dwg
 DATE: 11/30/2020



USER NAME = cabrerars	DESIGNED - BAB	REVISED -
DRAWN - BAB	REVISIONS -	
PLOT SCALE = 200,000' / in.	CHECKED - RSC	REVISED -
PLOT DATE = 11/30/2020	DATE -	REVISED -

**STATE OF ILLINOIS
 DEPARTMENT OF TRANSPORTATION**

PLAN VIEW			
SCALE: 100	SHEET 4 OF 4 SHEETS	STA. 271+00.00 TO STA. 331+00.00	

F.A.P. RTE. 662	SECTION (F, DX) CJS	COUNTY MACOUPIN	TOTAL SHEETS 11	SHEET NO. 11
CONTRACT NO. 72L90			ILLINOIS FED. AID PROJECT	