

INDEX OF SHEETS

1	TITLE SHEET
2	INDEX OF SHEETS AND STANDARDS
3	GENERAL NOTES
4-13	SUMMARY OF QUANTITIES
14-16	TYPICAL SECTIONS
17	SCHEDULE OF QUANTITIES
18	ALIGNMENT, TIES, AND BENCHMARKS
19-24	REMOVAL PLANS
25-30	ROADWAY PLAN AND PROFILE SHEETS
31-32	MAINTENANCE OF TRAFFIC
33-34	DRAINAGE SCHEDULES
35-40	DRAINAGE AND UTILITY PLAN AND PROFILE SHEETS
41	WATER MAIN DETAILS
42-48	INTERSECTION DETAIL SHEETS
49-58	ADA DETAIL SHEETS
59-64	PAVEMENT MARKINGS AND SIGNING PLAN
65-71	TEMPORARY AND PERMANENT EROSION CONTROL AND LANDSCAPING PLAN
72	GENERAL ROADWAY LIGHTING NOTES, SYMBOLS, AND LEGEND
73-74	LIGHTING REMOVAL PLAN
75-76	TEMPORARY LIGHTING PLAN
77-79	LIGHTING PLAN
80	LIGHTING DETAILS
81-94	IDOT DISTRICT ONE DETAILS
95-118	CROSS SECTIONS

HIGHWAY STANDARDS

000001-08	STANDARD SYMBOLS, ABBREVIATIONS AND PATTERNS
001006	DECIMAL OF AN INCH AND OF A FOOT
280001-07	TEMPORARY EROSION CONTROL SYSTEMS
424001-11	PERPENDICULAR CURB RAMPS FOR SIDEWALKS
424011-04	CORNER PARALLEL CURB RAMPS FOR SIDEWALKS
424026-03	ENTRANCE/ALLEY PEDESTRIAN CROSSINGS
424031-02	MEDIAN PEDESTRIAN CROSSING
602001-02	CATCH BASIN TYPE A
602301-04	INLET - TYPE A
602306-03	INLET - TYPE B
602401-07	PRECAST REINFORCED MANHOLE TYPE A 4' DIAMETER
602402-03	PRECAST REINFORCED MANHOLE TYPE A 5' DIAMETER
602701-02	MANHOLE STEPS
604001-05	FRAME AND LIDS TYPE 1
604026-03	FRAME AND GRATE TYPE 6
604036-03	GRATE TYPE 8
604051-04	FRAME AND GRATE TYPE 11
604056-04	FRAME AND GRATE TYPE 11V
606001-07	CONCRETE CURB TYPE B AND COMBINATION CONCRETE CURB AND GUTTER
606301-04	PC CONCRETE ISLANDS AND MEDIANS
701006-05	OFF-RD OPERATIONS, 2L, 2W, 15' (4.5 M) TO 24" (600 MM) FROM PAVEMENT EDGE
701011-04	OFF-RD MOVING OPERATIONS, 2L, 2W, DAY ONLY
701101-05	OFF-RD OPERATIONS, MULTILANE, 15' (4.5 M) TO 24" (600 MM) FROM PAVEMENT EDGE
701301-04	LANE CLOSURE, 2L, 2W SHORT TIME OPERATIONS
701311-03	LANE CLOSURE 2L, 2W MOVING OPERATIONS-DAY ONLY
701427-05	LANE CLOSURE, MULTILANE, INTERMITTENT OR MOVING OPER., FOR SPEEDS \leq 40 MPH
701501-06	URBAN LANE CLOSURE 2L, 2W, UNDIVIDED
701701-10	URBAN LANE CLOSURE, MULTILANE INTERSECTION
701801-06	SIDEWALK, CORNER OR CROSSWALK CLOSURE
701901-08	TRAFFIC CONTROL DEVICES
720001-01	SIGN MOUNTING DETAILS
720006-04	SIGN PANEL ERECTION DETAILS
720011-01	METAL POSTS FOR SIGNS, MARKERS, & DELINEATORS
728001-01	TELESCOPING STEEL SIGN SUPPORT
780001-05	TYPICAL PAVEMENT MARKINGS
814001-03	HANDHOLES
838001-01	BREAKAWAY DEVICES

DISTRICT ONE STANDARD DETAILS

BD-02	DRIVEWAY DETAILS DISTANCE BETWEEN ROW AND FACE OF CURB < 15' (4.5m)
BD-12	MANHOLE WITH RESTRICTOR PLATE
BD-24	CURB OR CURB AND GUTTER REMOVAL AND REPLACEMENT
BD-32	BUTT JOINT AND HMA TAPER DETAILS
BE-300	LIGHT POLE FOUNDATION 30' TO 35' M.H. 11 1/2" BOLT CIRCLE
BE-413	LIGHT POLE, ALUMINUM, DAVIT TYPE, 30' MOUNTING HEIGHT
BE-701	LUMINAIRE SAFETY CABLE ASSEMBLY
BE-702	MISC. ELECTRICAL DETAILS, SHEET A-(CABLE SPLICE, POLE WIRING, TRENCH DETAIL)
BE-800	TEMPORARY LIGHT POLE DETAILS
BE-801	TEMPORARY AERIAL CABLE INSTALLATION
BM-20	PRUNING FOR SAFETY AND EQUIPMENT CLEARANCE
TC-10	TRAFFIC CONTROL AND PROTECTION FOR SIDE ROADS, INTERSECTIONS, AND DRIVEWAYS
TC-13	DISTRICT ONE TYPICAL PAVEMENT MARKINGS
TC-16	SHORT TERM PAVEMENT MARKING LETTERS AND SYMBOLS
TC-22	ARTERIAL ROAD INFORMATION SIGN

MODEL: D:\s4\p... FILE NAME: S:\011300-1309\1309\02\1\Drawings\CADD\Misc-SSA\CADD_SHEETS\011305-shtIndex.dgn

CODE NO.	ITEM	UNIT	TOTAL QUANTITY	CONSTRUCTION CODE	
				ROADWAY 0004	STREET LIGHTING 0021
				70% FED 30% VILLAGE URBAN	100% VILLAGE URBAN
550A0160	STORM SEWERS, CLASS A, TYPE 1 36"	FOOT	10	10	
550A0340	STORM SEWERS, CLASS A, TYPE 2 12"	FOOT	459	459	
550A0360	STORM SEWERS, CLASS A, TYPE 2 15"	FOOT	112	112	
550A0380	STORM SEWERS, CLASS A, TYPE 2 18"	FOOT	171	171	
550A0450	STORM SEWERS, CLASS A, TYPE 2 36"	FOOT	229	229	
△ 550A0710	STORM SEWERS, CLASS A, TYPE 3 24"	FOOT	10	10	
+ 56400500	FIRE HYDRANTS TO BE REMOVED	EACH	3	3	
+ 56400820	FIRE HYDRANT WITH AUXILIARY VALVE AND VALVE BOX	EACH	3	3	
60108104	PIPE UNDERDRAINS, TYPE 1, 4"	FOOT	10	10	
60108106	PIPE UNDERDRAINS, TYPE 1, 6"	FOOT	77	77	
60201105	CATCH BASINS, TYPE A, 4'-DIAMETER, TYPE 11 FRAME AND GRATE	EACH	3	3	
60201110	CATCH BASINS, TYPE A, 4'-DIAMETER, TYPE 11V FRAME AND GRATE	EACH	4	4	
60204805	CATCH BASINS, TYPE A, 5'-DIAMETER, TYPE 11 FRAME AND GRATE	EACH	1	1	
60204825	CATCH BASINS, TYPE A, 5'-DIAMETER, TYPE 11V FRAME AND GRATE	EACH	2	2	

+ INDICATES SPECIALTY ITEM

MODEL: D:\64641
 FILE NAME: S:\CALL\1300-1399\1325\021\Drawings\CADD\Misc-SSA\CADD_SHEETS\0112345-sh-500.dgn



USER NAME = JImmyC	DESIGNED - MJG	REVISED - △ 02/18/2021 JFC
PLOT SCALE = 2,0000' / in.	DRAWN - DJW	REVISED -
PLOT DATE = 2/18/2021	CHECKED - MAG	REVISED -
	DATE - 12/23/2020	REVISED -

**STATE OF ILLINOIS
DEPARTMENT OF TRANSPORTATION**

SUMMARY OF QUANTITIES

SCALE: SHEET 4 OF 10 SHEETS STA. TO STA.

F.A.U. RTE.	SECTION	COUNTY	TOTAL SHEETS	SHEET NO.
1716	18-00013-00-FP	COOK	118	7
CONTRACT NO. 61G92			ILLINOIS FED. AID PROJECT	

CODE NO.	ITEM	UNIT	TOTAL QUANTITY	CONSTRUCTION CODE	
				ROADWAY 0004	STREET LIGHTING 0021
				70% FED 30% VILLAGE URBAN	100% VILLAGE URBAN
X4021000	TEMPORARY ACCESS (PRIVATE ENTRANCE)	EACH	5	5	
X4023000	TEMPORARY ACCESS (ROAD)	EACH	11	11	
X4060995	TEMPORARY RAMP, SPECIAL	SQ YD	25	25	
X5510100	STORM SEWER REMOVAL	FOOT	659	659	
X6020094	MANHOLES, TYPE A, 6'-DIAMETER, TYPE 1 FRAME, CLOSED LID, RESTRICTOR PLATE	EACH	1	1	
X6022040	MANHOLES, TYPE A, 4'-DIAMETER, TYPE 11V FRAME AND GRATE	EACH	12	12	
X7010216	TRAFFIC CONTROL AND PROTECTION, (SPECIAL)	L SUM	1	1	
+ X7200105	SIGN PANEL - TYPE 1 (SPECIAL)	SQ FT	24	24	
+ X8410102	TEMPORARY LIGHTING SYSTEM	L SUM	1		1
+ XX003614	RECEPTACLE (GFI TYPE) WITH WEATHERPROOF COVER	EACH	2		2
+ XX008424	LIGHT FIXTURE ASSEMBLY- TYPE A	EACH	2		2
+ XX008729	REMOVE AND REINSTALL SIGN PANEL	EACH	1	1	
+ XX008871	MULCH	SQ YD	388	388	
Z0013798	CONSTRUCTION LAYOUT	L SUM	1	1	

+ INDICATES SPECIALTY ITEM

MODEL: D:\4\4\11300-139911320\21\Drawings\CADD\Misc\SSA\CADD_SHEETS\0112345-sh-c500.dgn



USER NAME = JimmyC	DESIGNED - MJG	REVISED - 02/18/2021 JFC
PLOT SCALE = 2,0000' / in.	DRAWN - DJW	REVISIONS -
PLOT DATE = 2/18/2021	CHECKED - MAG	REVISIONS -
	DATE - 12/23/2020	REVISIONS -

**STATE OF ILLINOIS
DEPARTMENT OF TRANSPORTATION**

SUMMARY OF QUANTITIES

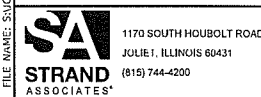
SCALE: SHEET 9 OF 10 SHEETS STA. TO STA.

F.A.U. RTE.	SECTION	COUNTY	TOTAL SHEETS	SHEET NO.
1716	18-00013-00-FP	COOK	118	12
CONTRACT NO. 61G92			ILLINOIS FED. AID PROJECT	

CODE NO.	ITEM	UNIT	TOTAL QUANTITY	CONSTRUCTION CODE	
				ROADWAY 0004	STREET LIGHTING 0021
				70% FED 30% VILLAGE URBAN	100% VILLAGE URBAN
Z0018700	DRAINAGE STRUCTURE TO BE REMOVED	EACH	34	34	
+ Z0019600	DUST CONTROL WATERING	UNIT	20	20	
Z0030850	TEMPORARY INFORMATION SIGNING	SQ FT	78	78	
+ Z0033020	LUMINAIRE SAFETY CABLE ASSEMBLY	EACH	2		2
+ Z0033028	MAINTENANCE OF LIGHTING SYSTEM	CAL MO	4		4
Z0056644	STORM SEWERS, TYPE 1, WATER MAIN QUALITY PIPE, 8"	FOOT	8	8	
Z0056650	STORM SEWERS, TYPE 1, WATER MAIN QUALITY PIPE, 15"	FOOT	52	52	
Z0056669	STORM SEWERS, TYPE 2, WATER MAIN QUALITY PIPE, 15"	FOOT	34	34	
# Z0076600	TRAINEES	HOUR	500	500	
# Z0076604	TRAINEES TRAINING PROGRAM GRADUATE	HOUR	500	500	

0042
+ INDICATES SPECIALTY ITEM

MODEL: Default
FILE NAME: S:\0111300-1300132102\102\work\03\CAD\MicroStation\000_SHEETS\0112245-21K-500.dgn



1170 SOUTH HOBOLT ROAD JULIE I, ILLINOIS 60431 (815) 744-4200	USER NAME = jimmyc	DESIGNED - MJG	REVISED - 02/18/2021 JFC
	PLOT SCALE = 2.0000' / in.	DRAWN - DJW	REVISED -
	PLOT DATE = 2/18/2021	CHECKED - MAG	REVISED -
		DATE - 12/23/2020	REVISED -

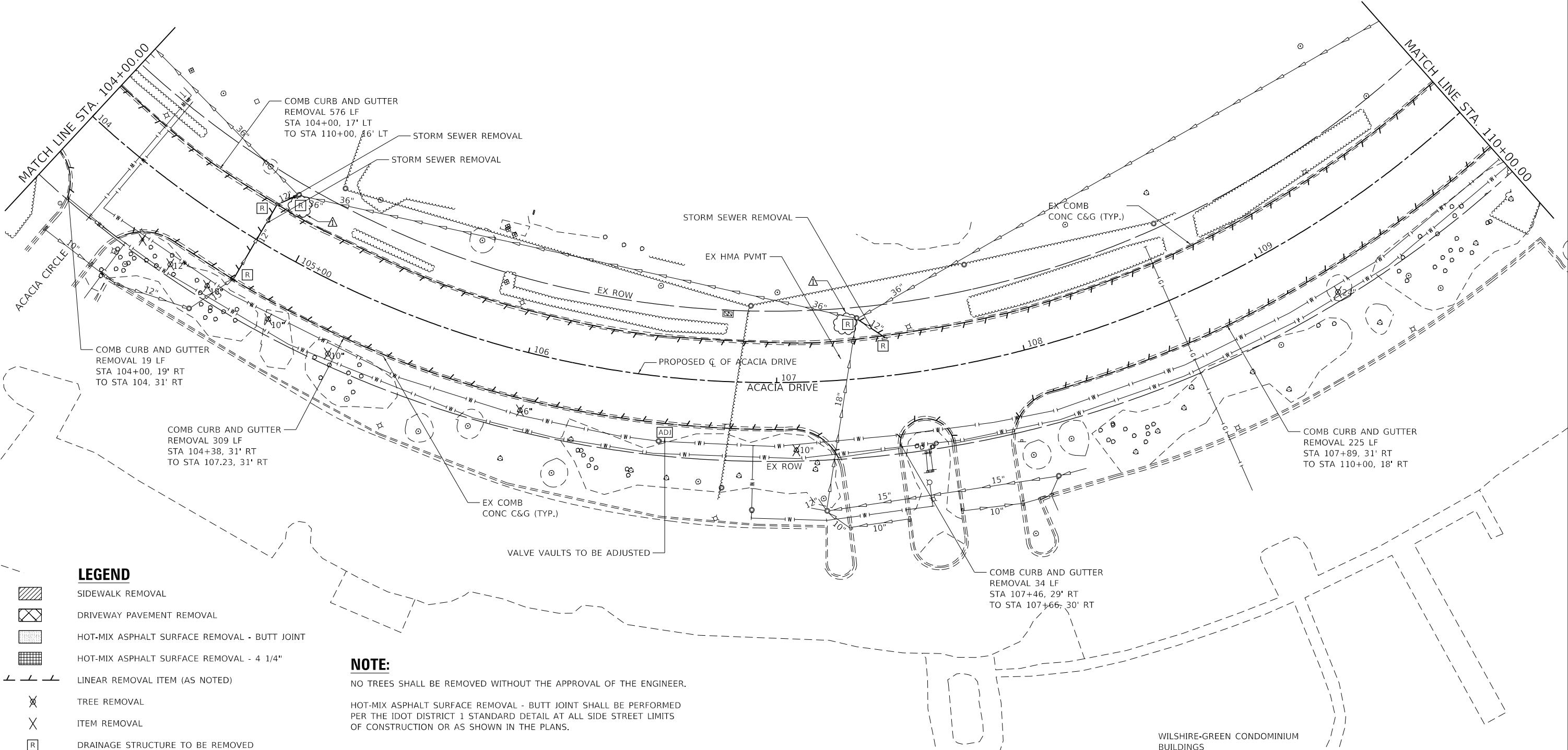
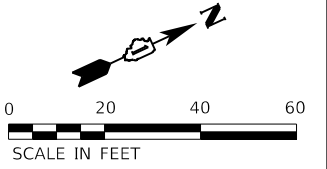
**STATE OF ILLINOIS
DEPARTMENT OF TRANSPORTATION**

SUMMARY OF QUANTITIES

SCALE: SHEET 10 OF 10 SHEETS STA. TO STA.

F.A.U RTE.	SECTION	COUNTY	TOTAL SHEETS	SHEET NO.
1716	18-00013-00-FP	COOK	118	13
ILLINOIS FED. AID PROJECT			CONTRACT NO. 61G92	

PAVEMENT REMOVAL
STA 104+00.00 TO 110+00.00



LEGEND

- SIDEWALK REMOVAL
- DRIVEWAY PAVEMENT REMOVAL
- HOT-MIX ASPHALT SURFACE REMOVAL - BUTT JOINT
- HOT-MIX ASPHALT SURFACE REMOVAL - 4 1/4"
- LINEAR REMOVAL ITEM (AS NOTED)
- TREE REMOVAL
- ITEM REMOVAL
- DRAINAGE STRUCTURE TO BE REMOVED

NOTE:

NO TREES SHALL BE REMOVED WITHOUT THE APPROVAL OF THE ENGINEER.
HOT-MIX ASPHALT SURFACE REMOVAL - BUTT JOINT SHALL BE PERFORMED PER THE IDOT DISTRICT 1 STANDARD DETAIL AT ALL SIDE STREET LIMITS OF CONSTRUCTION OR AS SHOWN IN THE PLANS.

MODEL Dwg.rvt
FILE NAME: S:\011300-130911325\021\Drawings\CADD\Micro-SSA\CADD_SHEETS\0113245-shrremovalAcacia-2.dwg



USER NAME = JImmyC	DESIGNED - MIG	REVISED - 02/18/2021 JFC
PLOT SCALE = 40.0000 ' / in.	DRAWN - DJW	REVISED -
PLOT DATE = 2/18/2021	CHECKED - MAG	REVISED -
	DATE - 12/23/2020	REVISED -

**STATE OF ILLINOIS
DEPARTMENT OF TRANSPORTATION**

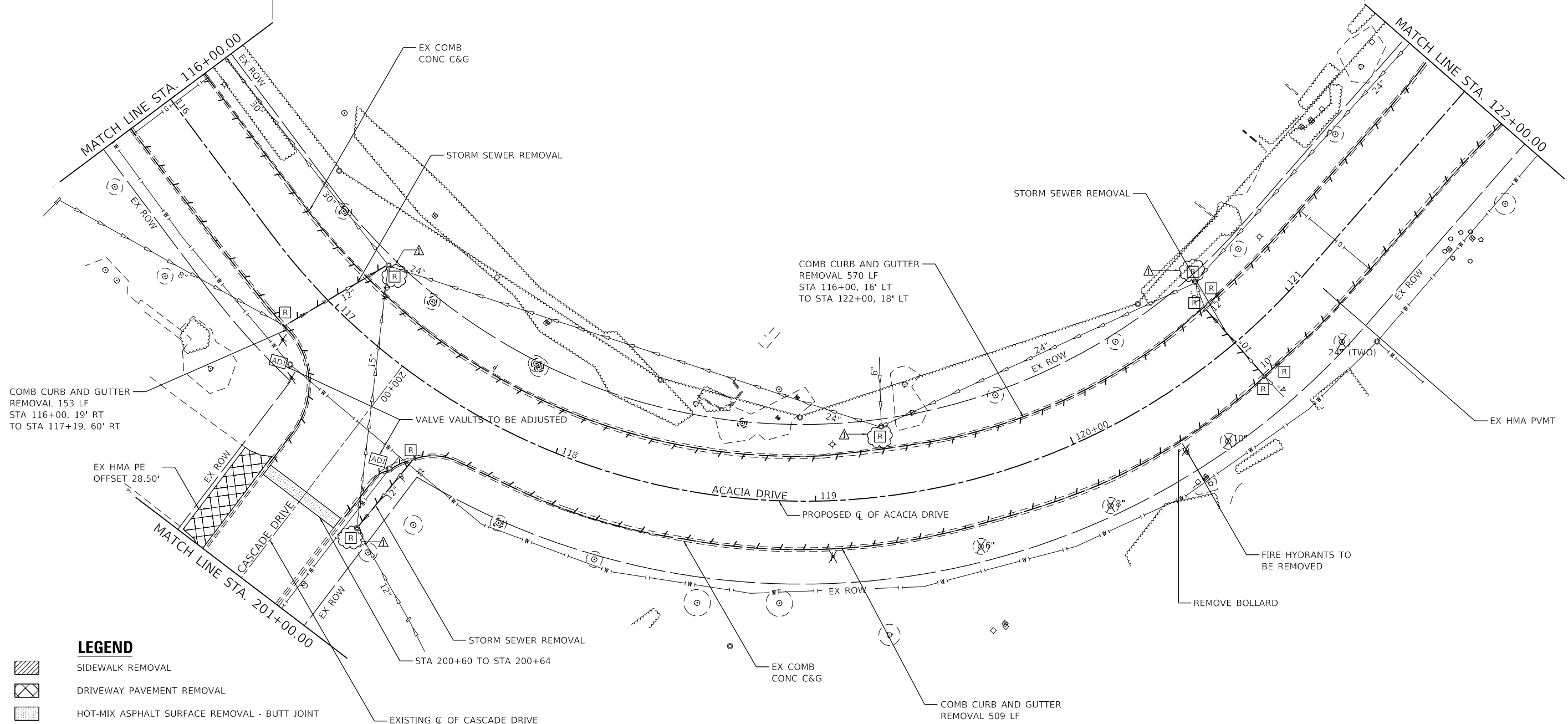
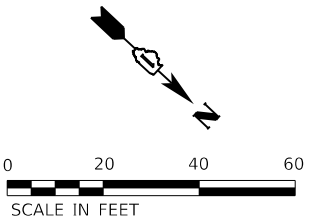
**REMOVAL PLAN
ACACIA DRIVE**

SCALE: 1" = 20' SHEET 2 OF 6 SHEETS STA. 104+00.00 TO STA. 110+00.00

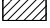







F.A.U. RTE.	SECTION	COUNTY	TOTAL SHEETS	SHEET NO.
1716	18-00013-00-FP	COOK	118	20
CONTRACT NO. 61G92				
ILLINOIS FED. AID PROJECT				

WILSHIRE-GREEN CONDOMINIUM BUILDINGS

PAVEMENT REMOVAL
STA 116+00 TO STA 122+00



LEGEND

-  SIDEWALK REMOVAL
-  DRIVEWAY PAVEMENT REMOVAL
-  HOT-MIX ASPHALT SURFACE REMOVAL - BUTT JOINT
-  HOT-MIX ASPHALT SURFACE REMOVAL - 4 1/4"
-  LINEAR REMOVAL ITEM (AS NOTED)
-  TREE REMOVAL
-  ITEM REMOVAL
-  DRAINAGE STRUCTURE TO BE REMOVED

NOTE:

NO TREES SHALL BE REMOVED WITHOUT THE APPROVAL OF THE ENGINEER.
HOT-MIX ASPHALT SURFACE REMOVAL - BUTT JOINT SHALL BE PERFORMED PER THE IDOT DISTRICT 1 STANDARD DETAIL AT ALL SIDE STREET LIMITS OF CONSTRUCTION OR AS SHOWN IN THE PLANS.

MODEL: D:\4\6\11300-13001\325021\Drawings\CD\11300-13001\325021\DRS\ACAD\DD_SHEETS\112345-stcr-removal-Acacia.dwg



USER NAME = jimmyc	DESIGNED - MIG	REVISED - 02/18/2021 JFC
PLOT SCALE = 40.0000 ' / in.	DRAWN - DJW	REVISIED -
PLOT DATE = 2/18/2021	CHECKED - MAG	REVISIED -
	DATE - 12/23/2020	REVISIED -

**STATE OF ILLINOIS
DEPARTMENT OF TRANSPORTATION**

**REMOVAL PLAN
ACACIA DRIVE**

SCALE: 1" = 20' SHEET 4 OF 6 SHEETS STA. 116+00.00 TO STA. 122+00.00

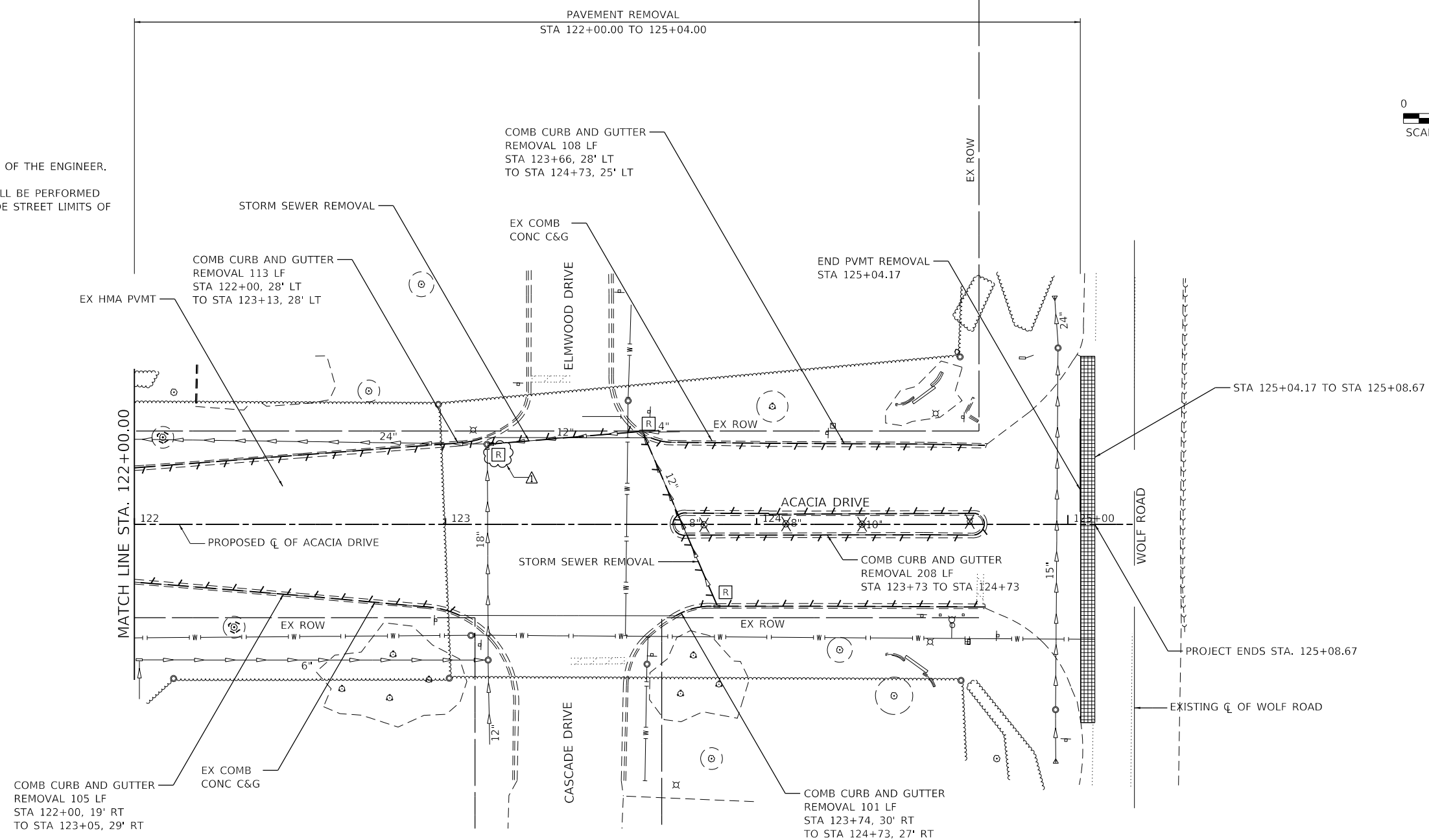
F.A.U. RTE.	SECTION	COUNTY	TOTAL SHEETS	SHEET NO.
1716	18-00013-00-FP	COOK	118	22
CONTRACT NO. 61G92				
ILLINOIS FED. AID PROJECT				



NOTE:

NO TREES SHALL BE REMOVED WITHOUT THE APPROVAL OF THE ENGINEER.

HOT-MIX ASPHALT SURFACE REMOVAL - BUTT JOINT SHALL BE PERFORMED PER THE IDOT DISTRICT 1 STANDARD DETAIL AT ALL SIDE STREET LIMITS OF CONSTRUCTION OR AS SHOWN IN THE PLANS.



COMB CURB AND GUTTER
REMOVAL 105 LF
STA 122+00, 19' RT
TO STA 123+05, 29' RT

COMB CURB AND GUTTER
REMOVAL 101 LF
STA 123+74, 30' RT
TO STA 124+73, 27' RT

LEGEND

- SIDEWALK REMOVAL
- DRIVEWAY PAVEMENT REMOVAL
- HOT-MIX ASPHALT SURFACE REMOVAL - BUTT JOINT
- HOT-MIX ASPHALT SURFACE REMOVAL - 4 1/4"
- LINEAR REMOVAL ITEM (AS NOTED)
- TREE REMOVAL
- ITEM REMOVAL
- DRAINAGE STRUCTURE TO BE REMOVED

STRUCTURES TO BE ADJUSTED			
TYPE	STATION	OFFSET	ELEVATION
VALVE VAULT	106+55.50	25.73' RT	705.35
VALVE VAULT	110+96.81	26.62' RT	707.85
VALVE VAULT	117+02.79	27.08' RT	711.00
VALVE VAULT	117+50.52	34.31' RT	711.00
VALVE BOX	201+73.20	23.34' RT	711.83

MODEL D:\a\h\11300-1399\139913991021\Drawings\CADD\Micro-SSA\CADD_SHEETS\012345-STR-removal\Acacia.dwg
 FILE NAME: S:\Q1\1300-1399\139913991021\Drawings\CADD\Micro-SSA\CADD_SHEETS\012345-STR-removal\Acacia.dwg



USER NAME = jimmyc	DESIGNED - MJC	REVISED - 02/18/2021 JFC
PLOT SCALE = 40.0000 ' / in.	DRAWN - DJW	REVISED -
PLOT DATE = 2/18/2021	CHECKED - MAG	REVISED -
	DATE - 12/23/2020	REVISED -

**STATE OF ILLINOIS
DEPARTMENT OF TRANSPORTATION**

**REMOVAL PLAN
ACACIA DRIVE**

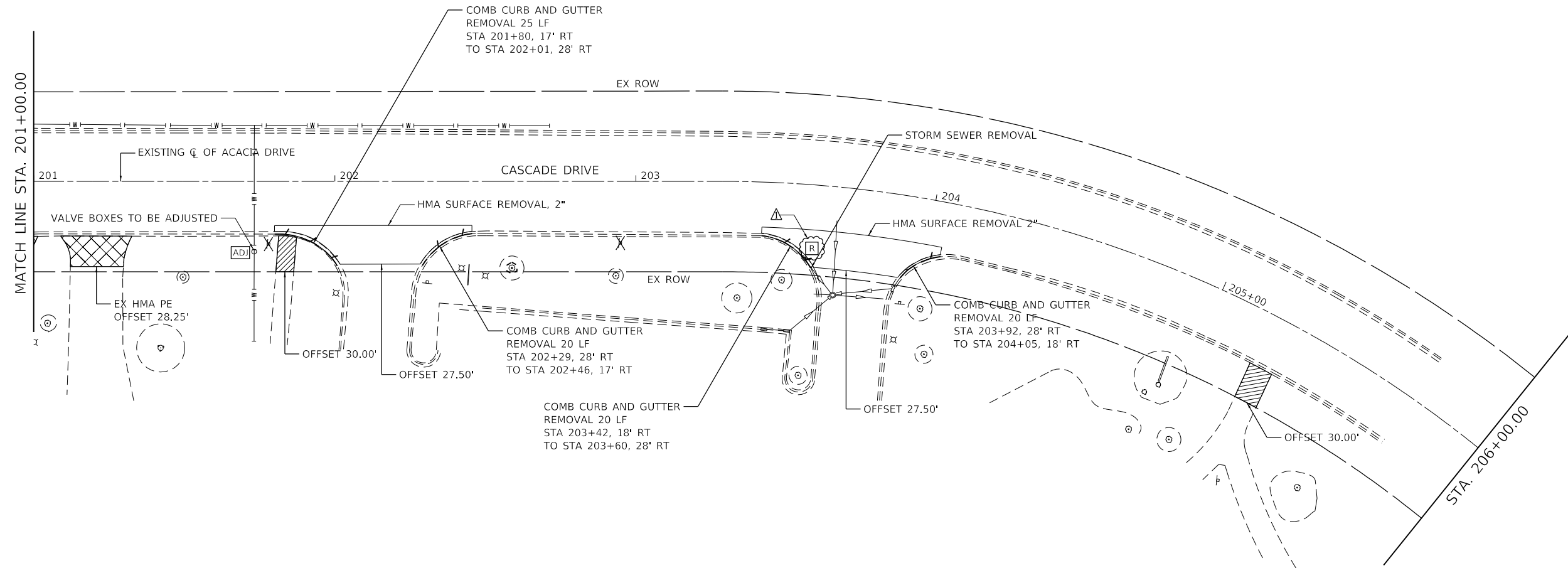
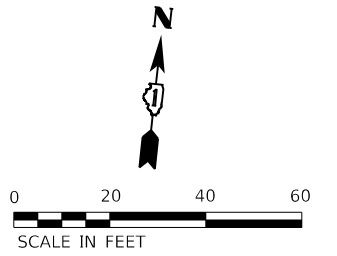
SCALE: 1" = 20' SHEET 5 OF 6 SHEETS STA. 122+00.00 TO STA. 125+24.83

F.A.U. RTE.	SECTION	COUNTY	TOTAL SHEETS	SHEET NO.
	18-00013-00-FP	COOK	118	23
CONTRACT NO.			61G92	
ILLINOIS FED. AID PROJECT				

NOTE:

NO TREES SHALL BE REMOVED WITHOUT THE APPROVAL OF THE ENGINEER.

HOT-MIX ASPHALT SURFACE REMOVAL - BUTT JOINT SHALL BE PERFORMED PER THE IDOT DISTRICT 1 STANDARD DETAIL AT ALL SIDE STREET LIMITS OF CONSTRUCTION OR AS SHOWN IN THE PLANS.



LEGEND

	SIDEWALK REMOVAL
	DRIVEWAY PAVEMENT REMOVAL
	HOT-MIX ASPHALT SURFACE REMOVAL - BUTT JOINT
	HOT-MIX ASPHALT SURFACE REMOVAL - 4 1/4"
	LINEAR REMOVAL ITEM (AS NOTED)
	TREE REMOVAL
	ITEM REMOVAL
	DRAINAGE STRUCTURE TO BE REMOVED

MODEL: D:\p1\11300-13001\11300-13001\11300-13001\11300-13001\CADD\Misc\SSA\CADD_SHEETS\11300-13001\11300-13001\11300-13001\Cascade-1.dgn
 FILE NAME: S:\11300-13001\11300-13001\11300-13001\Cascade-1.dgn



USER NAME = JimmyC	DESIGNED - MIG	REVISED - 02/18/2021 JFC
	DRAWN - DJW	REVISED -
PLOT SCALE = 40.0000' / in.	CHECKED - MAG	REVISED -
PLOT DATE = 2/18/2021	DATE - 12/23/2020	REVISED -

**STATE OF ILLINOIS
DEPARTMENT OF TRANSPORTATION**

**REMOVAL PLAN
CASCADE DRIVE**

SCALE: 1" = 20' SHEET 6 OF 6 SHEETS STA. 201+00.00 TO STA. END

F.A.U. RTE.	SECTION	COUNTY	TOTAL SHEETS	SHEET NO.
1716	18-00013-00-FP	COOK	118	24
CONTRACT NO. 61G92				
ILLINOIS		FED. AID PROJECT		

PIPE NO.	FROM	TO	LENGTH (FT)	DIA (IN)	PIPE TYPE	SLOPE (%)	U.I.	D.I.
N100	N-1.2	N-1.1	24	12	STORM SEWERS, CLASS A, TYPE 2, 12"	0.91%	705.59	705.37
P100	A-2.1	O-1	98	36	STORM SEWERS, CLASS A, TYPE 2, 36"	0.76%	688.14	687.39
P101	A-2.3	A-2.5	24	18	STORM SEWERS, CLASS A, TYPE 2, 18"	2.00%	689.97	689.49
P102	A-2.4	A-2.3	9	12	STORM SEWERS, CLASS A, TYPE 1, 12"	1.12%	691.01	690.90
P103	A-2.2	A-2.1	10	36	STORM SEWERS, CLASS A, TYPE 1, 36"	0.98%	688.24	688.14
P104	A-2.5	A-2.1	28	18	STORM SEWERS, CLASS A, TYPE 2, 18"	2.00%	689.49	688.93
P105	A-3.1	A-2.2	64	36	STORM SEWERS, CLASS A, TYPE 2, 36"	0.50%	688.56	688.24
P106	A-3.2	A-3.1	51	36	STORM SEWERS, CLASS A, TYPE 2, 36"	0.97%	689.06	688.56
P107	A-3.3	A-3.2	16	36	STORM SEWERS, CLASS A, TYPE 2, 36"	2.48%	689.47	689.06
P108	A-3.4	A-3.1	41	18	STORM SEWERS, CLASS A, TYPE 2, 18"	1.00%	689.22	688.81
P109	A-4.1	A-3.4	78	18	STORM SEWERS, CLASS A, TYPE 2, 18"	2.00%	692.78	691.22
P110	A-4.2	A-4.1	32	12	STORM SEWERS, CLASS A, TYPE 2, 12"	0.97%	694.62	694.31
P111	A-5.2	A-5.1	8	15	STORM SEWERS, CLASS A, TYPE 2, 15"	0.99%	698.87	698.79
P112	A-5.3	A-5.2	31	15	STORM SEWERS, CLASS A, TYPE 1, 15"	0.99%	699.81	699.50
P113	EXISTING	A-5.3	6	15	STORM SEWERS, CLASS A, TYPE 1, 15"	0.67%	700.30	700.26
P114	A-6.1	A-6.3	32	15	STORM SEWERS, CLASS A, TYPE 2, 15"	1.01%	700.11	699.78
P115	A-6.2	A-6.1	32	12	STORM SEWERS, CLASS A, TYPE 2, 12"	1.00%	700.43	700.11
P116	A-8.1	A-7.1	72	15	STORM SEWERS, CLASS A, TYPE 2, 15"	1.00%	701.21	700.48
P117	A-8.2	A-8.1	32	12	STORM SEWERS, CLASS A, TYPE 1, 12"	1.00%	702.01	701.69
P118	A-9.1	A-8.1	9	12	STORM SEWERS, CLASS A, TYPE 2, 12"	1.04%	701.43	701.33
P119	A-9.2	A-8.2	10	12	STORM SEWERS, CLASS A, TYPE 1, 12"	0.96%	702.24	702.14
P120	A-10.2	A-10.1	9	12	STORM SEWERS, CLASS A, TYPE 2, 12"	1.03%	703.00	702.90
P121	A-10.3	A-10.2	34	12	STORM SEWERS, CLASS A, TYPE 2, 12"	1.01%	703.35	703.00
P122	A-10.4	A-10.3	59	12	STORM SEWERS, CLASS A, TYPE 1, 12"	1.01%	704.20	703.60
P123	A-11.3	A-11.1	28	12	STORM SEWERS, CLASS A, TYPE 2, 12"	1.01%	704.15	703.86
P124	A-11.2	A-11.1	3	12	STORM SEWERS, CLASS A, TYPE 2, 12"	1.18%	704.15	704.11
P125	A-12.4	A-12.3	6	12	STORM SEWERS, CLASS A, TYPE 2, 12"	0.48%	704.67	704.64
P126	A-12.3	A-12.2	32	12	STORM SEWERS, CLASS A, TYPE 2, 12"	1.03%	704.64	704.31
P127	A-12.2	A-12.1	8	12	STORM SEWERS, CLASS A, TYPE 2, 12"	0.99%	704.31	704.23
P128	A-13.3	A-13.2	35	12	STORM SEWERS, CLASS A, TYPE 2, 12"	0.95%	705.68	705.34
P129	A-13.2	A-13.1	8	12	STORM SEWERS, CLASS A, TYPE 2, 12"	1.00%	705.34	705.26
P130	A-14.2	A-14.1	9	12	STORM SEWERS, CLASS A, TYPE 2, 12"	1.05%	705.76	705.66
P131	A-14.3	A-14.2	33	12	STORM SEWERS, CLASS A, TYPE 2, 12"	0.96%	706.08	705.76
P132	EXISTING	A-14.3	8	8	STORM SEWERS, TYPE 1, WATER MAIN QUALITY PIPE, 8"	1.00%	708.08	708.00
P133	A-15.2	A-16.1	34	15	STORM SEWERS, TYPE 2, WATER MAIN QUALITY PIPE, 15"	1.00%	706.38	706.04
P134	A-15.3	A-15.2	21	12	STORM SEWERS, CLASS A, TYPE 2, 12"	1.50%	706.70	706.38
P135	A-15.4	A-15.3	32	12	STORM SEWERS, CLASS A, TYPE 2, 12"	0.96%	707.01	706.70
P136	A-17.2	A-17.1	10	12	STORM SEWERS, CLASS A, TYPE 2, 12"	1.07%	706.57	706.46
P137	A-17.3	A-17.2	32	12	STORM SEWERS, CLASS A, TYPE 2, 12"	0.99%	706.89	706.57
P138	A-18.5	A-18.4	21	12	STORM SEWERS, CLASS A, TYPE 1, 12"	1.00%	706.10	705.89
P139	A-18.4	A-18.2	32	12	STORM SEWERS, CLASS A, TYPE 2, 12"	0.97%	705.89	705.58
P140	A-18.3	A-18.2	19	12	STORM SEWERS, CLASS A, TYPE 2, 12"	0.89%	705.75	705.58
P141	A-18.2	A-18.1	11	12	STORM SEWERS, CLASS A, TYPE 2, 12"	1.03%	705.58	705.46
P142	A-21.1	A-19.1	52	15	STORM SEWERS, TYPE 1, WATER MAIN QUALITY PIPE, 15"	1.04%	707.73	707.18
P143	A-21.2	A-21.1	57	12	STORM SEWERS, CLASS A, TYPE 1, 12"	1.00%	708.58	708.00
P144	A-17.1	A-17.4	10	24	STORM SEWERS, CLASS A, TYPE 3, 24"	0.60%	700.66	700.60

LEGEND

LINES/SYMBOLS	EXISTING	PROPOSED
CATCH BASIN		
INLET		
MANHOLE		
STORM SEWER		
PIPE UNDERDRAINS		
PIPE CULVERT		
FIRE HYDRANT		
WATER VALVE VAULT		
WATER VALVE BOX		
WATER MAIN		
STRUCTURE TO BE ADJUSTED		
DETENTION VOLUME BOUNDARY		

MODEL: D:\info\... FILE NAME: ... 1716



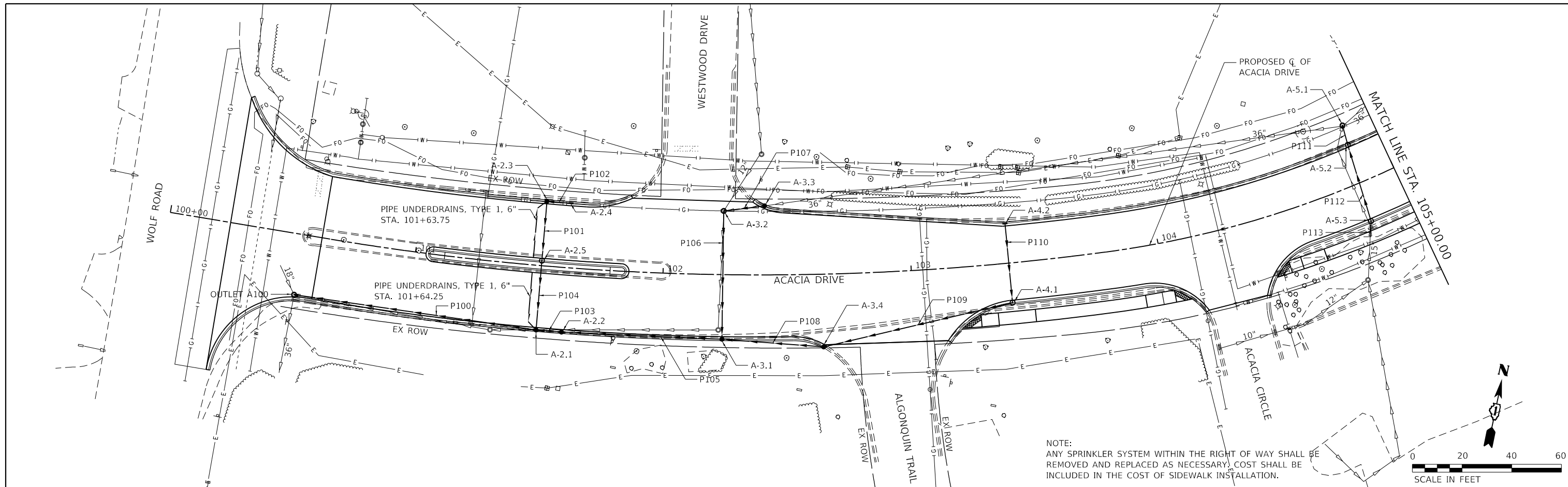
USER NAME = JjimmyC	DESIGNED - MIG	REVISED - 02/18/2021 JFC
DRAWN - DJW	CHECKED - MAG	REVISED -
PLOT SCALE = 2,0000 ' / in.	DATE - 12/23/2020	REVISED -
PLOT DATE = 2/18/2021		

**STATE OF ILLINOIS
DEPARTMENT OF TRANSPORTATION**

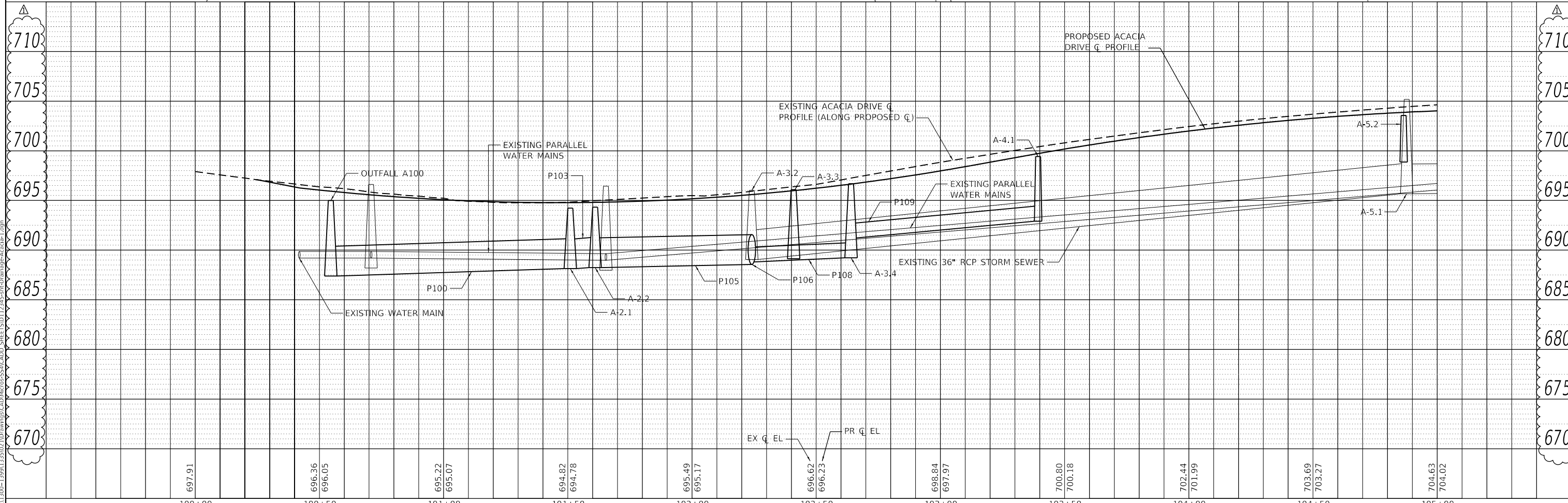
DRAINAGE SCHEDULES

F.A.U. RTE.	SECTION	COUNTY	TOTAL SHEETS	SHEET NO.
1716	18-00013-00-FP	COOK	118	33
CONTRACT NO. 61G92				
SCALE:	SHEET 1 OF 2 SHEETS	STA.	TO STA.	ILLINOIS FED. AID PROJECT

PLAN	SURVEYED	DATE
	PLOTTED	BY
	ALIGNMENT CHECKED	
	NOTE BOOK	
	NO.	
	FILE NAME	
	FILE NO.	



PROFILE	SURVEYED	DATE
	PLOTTED	BY
	GRADES CHECKED	
	NOTE BOOK	
	NO.	
	FILE NAME	
	FILE NO.	



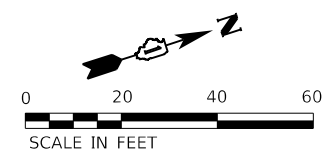
MODEL: Default
 FILE NAME: S:\011300-13991\335021\DWG\18-00013-00-FP\18-00013-00-FP.dwg
 STRAND ASSOCIATES*

USER NAME = JimmyC	DESIGNED - MIG	REVISED - 02/18/2021 JFC
	DRAWN - DJW	REVISED -
PLOT SCALE = 40.0000' / in.	CHECKED - MAG	REVISED -
PLOT DATE = 2/18/2021	DATE - 12/23/2020	REVISED -

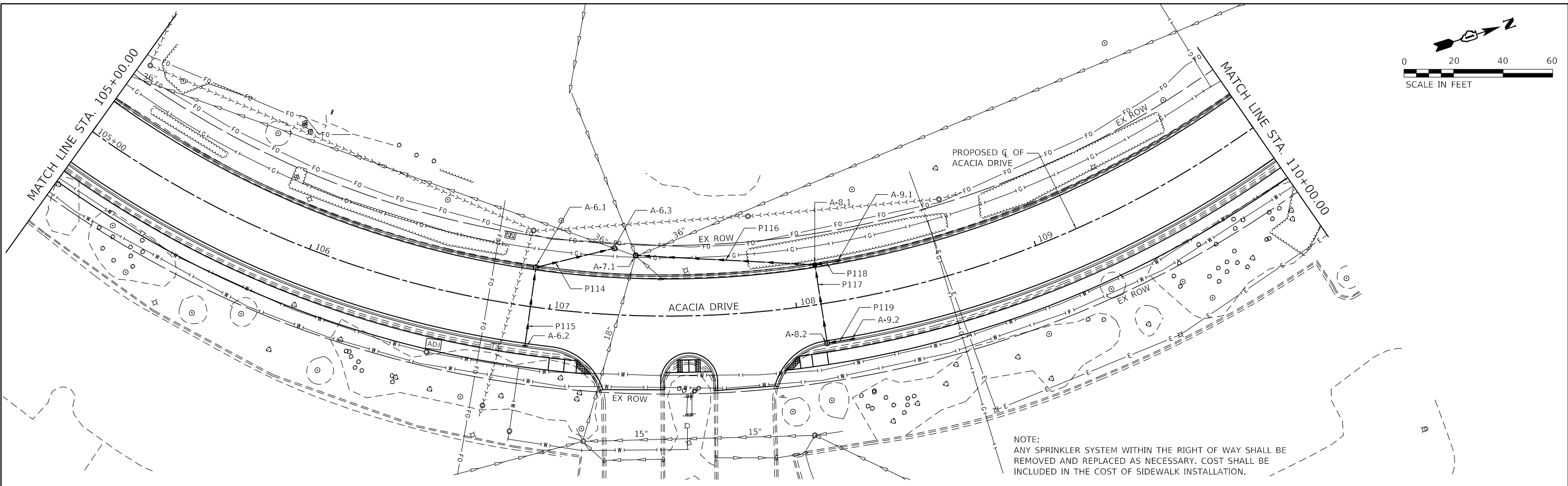
**STATE OF ILLINOIS
 DEPARTMENT OF TRANSPORTATION**

DRAINAGE AND UTILITY PLAN AND PROFILE	
ACACIA DRIVE	
SCALE: 20(H)-5(V)	SHEET 1 OF 6 SHEETS
STA. 100+00.00 TO STA. 105+00.00	

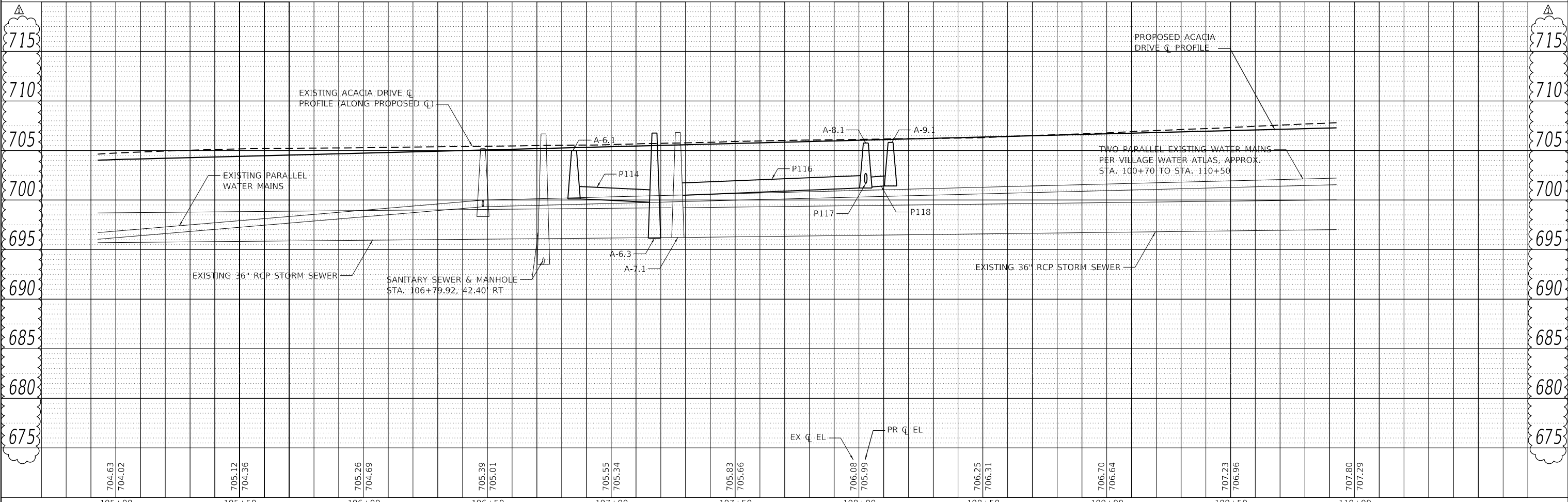
F.A.U. RTE.	SECTION	COUNTY	TOTAL SHEETS	SHEET NO.
1716	18-00013-00-FP	COOK	118	35
				CONTRACT NO. 61G92
				ILLINOIS FED. AID PROJECT



PLAN	SURVEYED	DATE
	PLOTTED	
NOTE BOOK NO.	ALIGNMENT CHECKED	
	GRADE CHECKED	
	STRUCTURE NOTATION	
	FILE NAME	



PROFILE	SURVEYED	DATE
	PLOTTED	
NOTE BOOK NO.	GRADES CHECKED	
	STRUCTURE NOTATION	
	FILE NAME	



MODEL: Default
 FILE NAME: S:\01\1300-1399\1335\0210\Drawings\CAD\MicroStation\SSA\CADD_Sheets\01123456\SSA\CADD_Sheets\Acacia2.dgn
STRAND ASSOCIATES
 1170 SOUTH HOUBOLT ROAD
 JOLIET, ILLINOIS 60431
 (815) 744-4200

USER NAME = jlmmyc	DESIGNED - MIG	REVISED - 02/18/2021 JFC
PLOT SCALE = 40.0000' / in.	DRAWN - DJW	REVISED -
PLOT DATE = 2/18/2021	CHECKED - MAG	REVISED -
	DATE - 12/23/2020	REVISED -

**STATE OF ILLINOIS
 DEPARTMENT OF TRANSPORTATION**

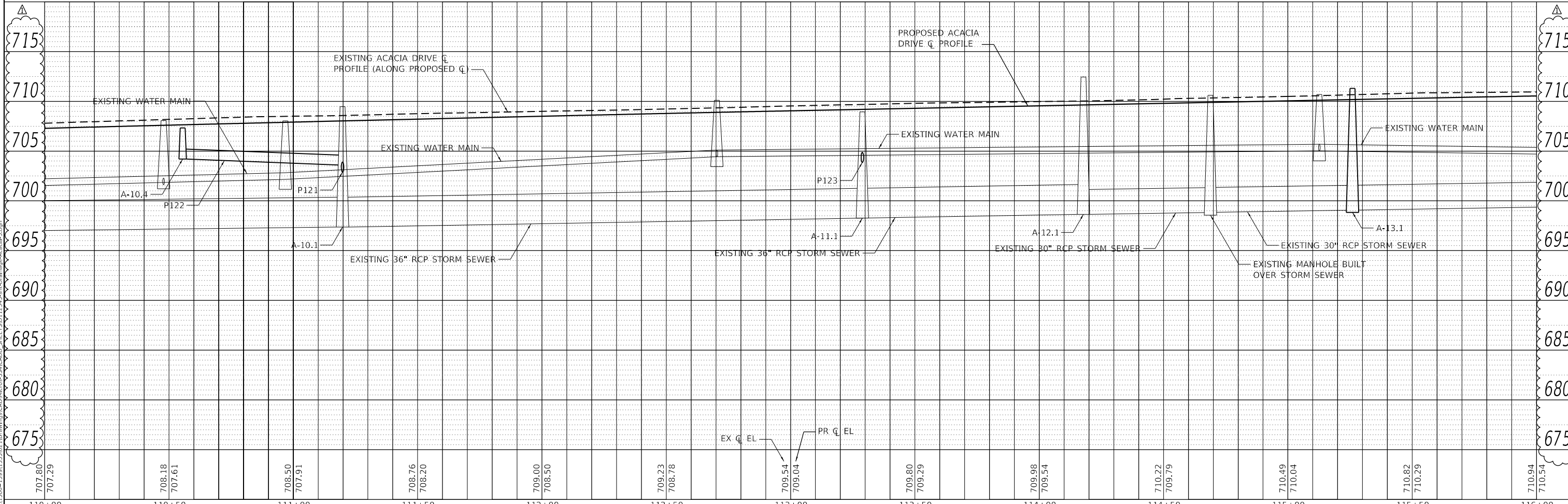
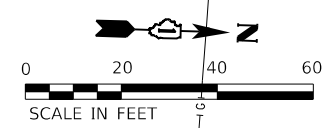
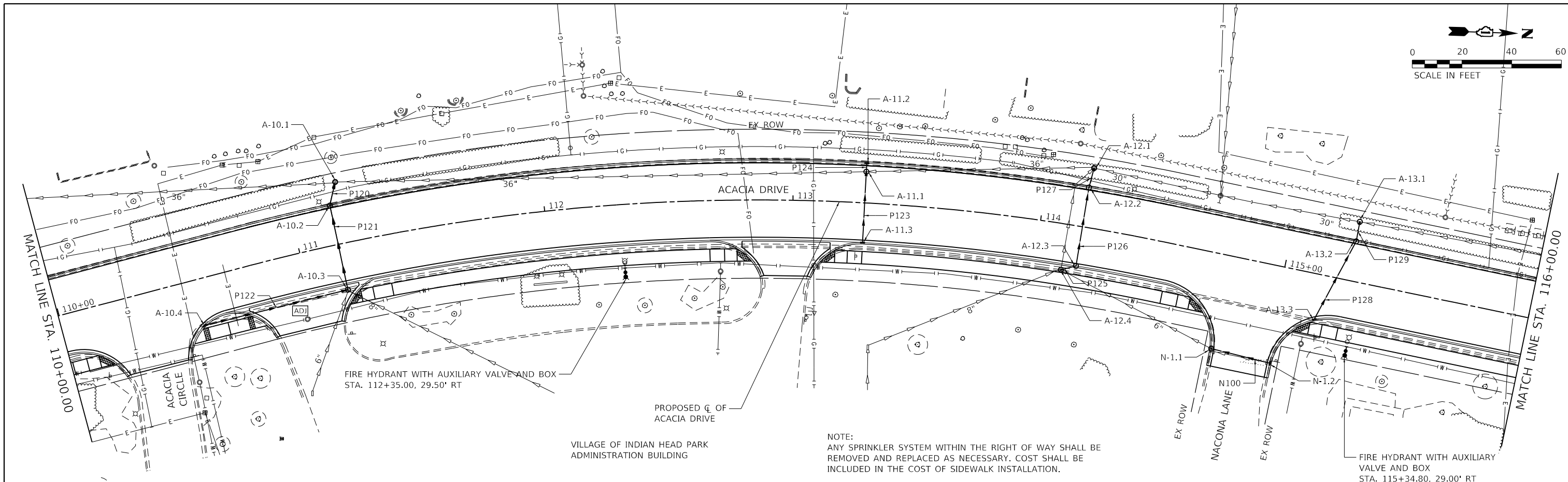
**DRAINAGE AND UTILITY PLAN AND PROFILE
 ACACIA DRIVE**

SCALE: 20(H)-5(V) SHEET 2 OF 6 SHEETS STA. 105+00.00 TO STA. 110+00.00

F.A.U. RTE.	SECTION	COUNTY	TOTAL SHEETS	SHEET NO.
1716	18-00013-00-FP	COOK	118	36
CONTRACT NO. 61G92			ILLINOIS FED. AID PROJECT	

PLAN	SURVEYED	DATE
	PLOTTED	BY
	ALIGNED	
	CHECKED	
	FILE NAME	
	NO.	

PROFILE	SURVEYED	DATE
	PLOTTED	BY
	GRADES	
	CHECKED	
	STRUCTURE	
	NOTATION	
	NO.	



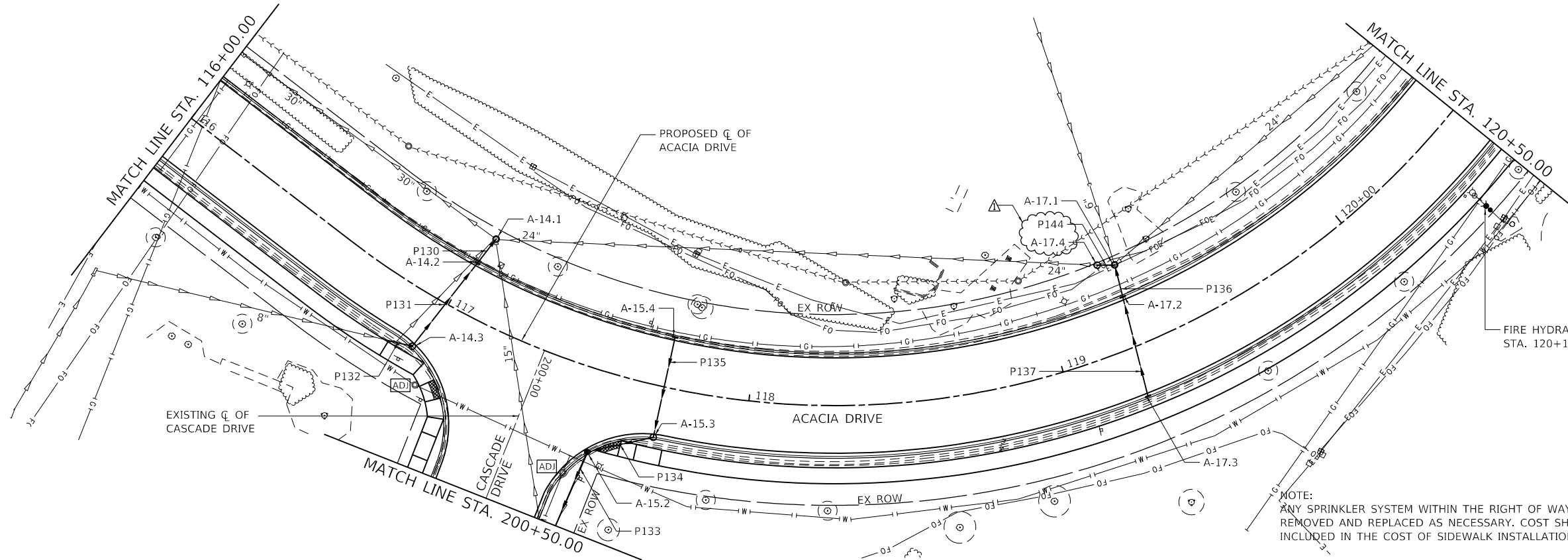
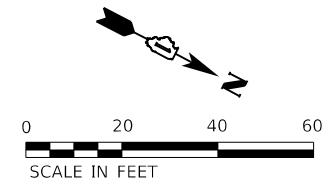
MODEL: Default
 FILE NAME: S:\0111300-13991133\02110\Drawings\CAD\MicroStation\SS\11300-13991133.dwg
 STRAND ASSOCIATES*

USER NAME = jlmmyc	DESIGNED - MIG	REVISED - 02/18/2021 JFC
	DRAWN - DJW	REVISED -
PLOT SCALE = 40.0000' / in.	CHECKED - MAG	REVISED -
PLOT DATE = 2/18/2021	DATE - 12/23/2020	REVISED -

**STATE OF ILLINOIS
 DEPARTMENT OF TRANSPORTATION**

DRAINAGE AND UTILITY PLAN AND PROFILE	
ACACIA DRIVE	
SCALE: 20(H)-5(V)	SHEET 3 OF 6 SHEETS
STA. 110+00.00 TO STA. 116+00.00	

F.A.U. RTE.	SECTION	COUNTY	TOTAL SHEETS	SHEET NO.
1716	18-00013-00-FP	COOK	118	37
				CONTRACT NO. 61G92
				ILLINOIS FED. AID PROJECT

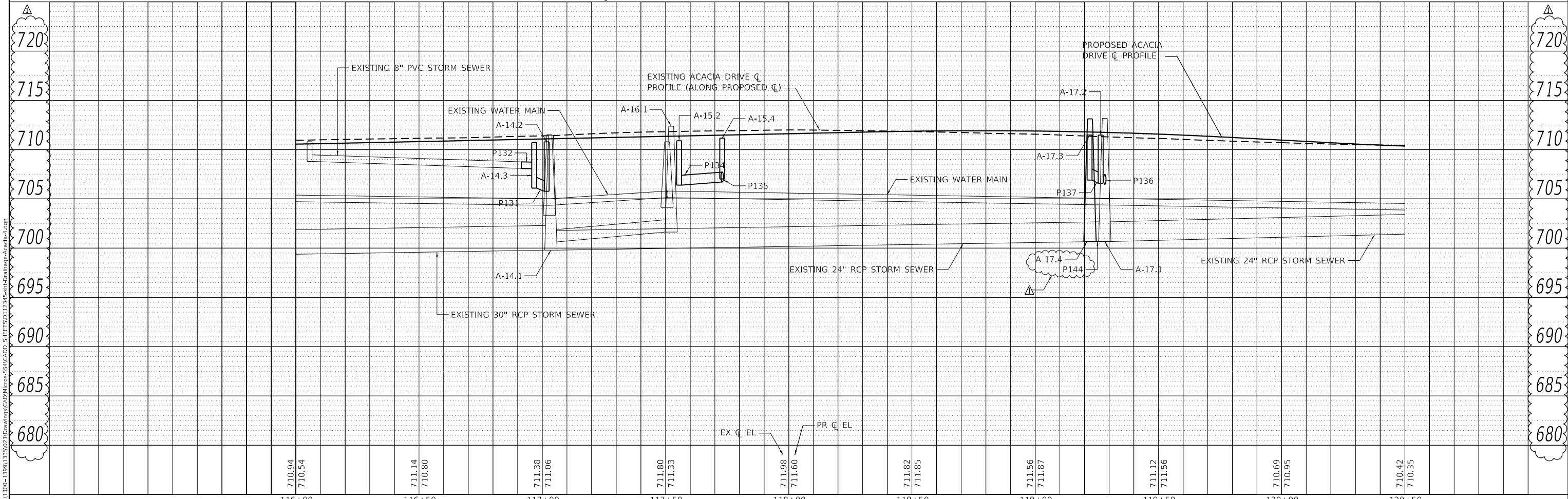


NOTE:
ANY SPRINKLER SYSTEM WITHIN THE RIGHT OF WAY SHALL BE REMOVED AND REPLACED AS NECESSARY. COST SHALL BE INCLUDED IN THE COST OF SIDEWALK INSTALLATION.

FIRE HYDRANT WITH AUXILIARY VALVE AND BOX
STA. 120+11.62, 28.00' RT

PLAN	SURVEYED	DATE
	PLOTTED	
	ALIGNMENT CHECKED	
	NOTE BOOK NO.	
	CADD FILE NAME	

PROFILE	SURVEYED	DATE
	PLOTTED	
	GRADES CHECKED	
	NOTE BOOK NO.	
	STRUCTURE NOTATION	



MODEL: DefaRt
FILE NAME: S:\1011300-13991133\0210\Drawings\CADD\MicroStation\SSA\CADD_SHEET\01123456.dwg
1170 SOUTH HOBOLT ROAD
JOLIET, ILLINOIS 60431
(815) 744-4200
STRAND ASSOCIATES*

USER NAME = jlmmyc	DESIGNED - MIG	REVISED - 02/18/2021 JFC
	DRAWN - DJW	REVISED -
PLOT SCALE = 40.0000' / in.	CHECKED - MAG	REVISED -
PLOT DATE = 2/18/2021	DATE - 12/23/2020	REVISED -

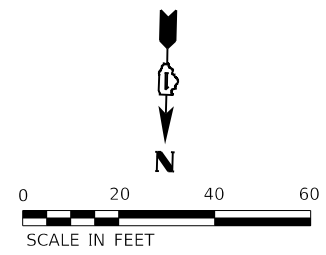
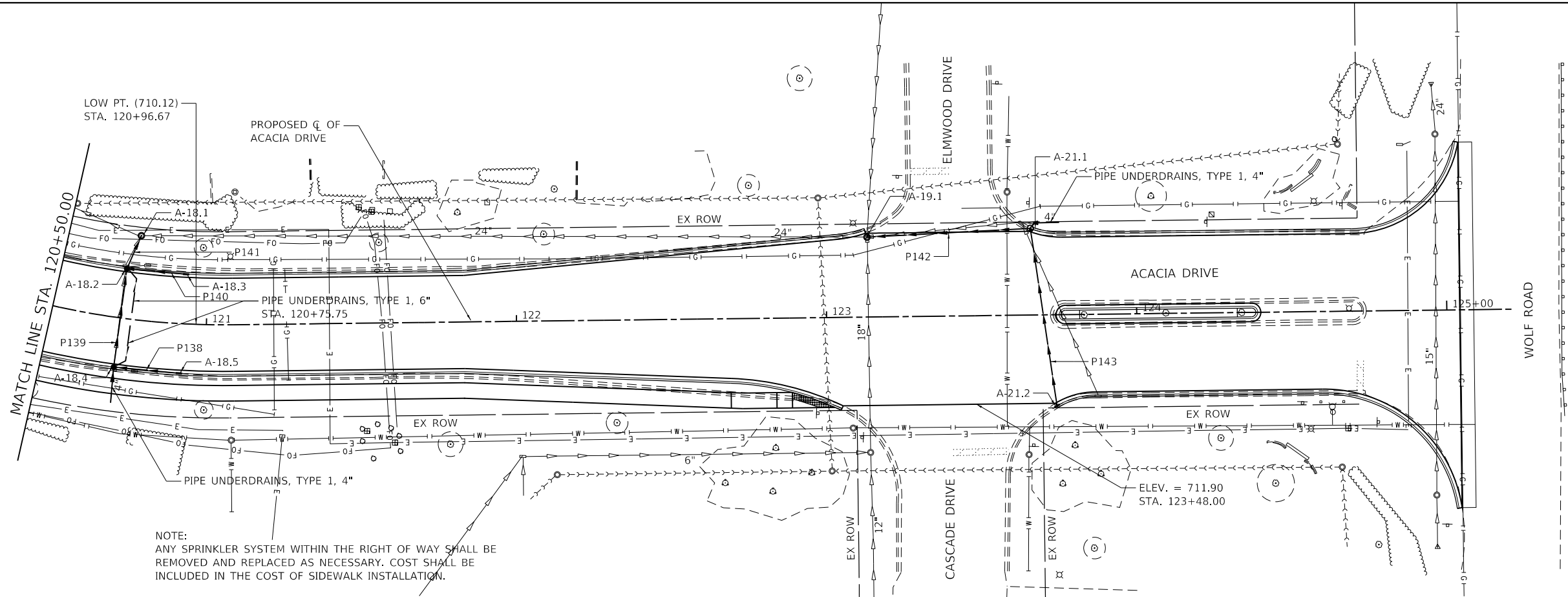
STATE OF ILLINOIS
DEPARTMENT OF TRANSPORTATION

DRAINAGE AND UTILITY PLAN AND PROFILE
ACACIA DRIVE
SCALE: 20(H)-5(V) SHEET 4 OF 6 SHEETS STA. 116+00.00 TO STA. 120+50.00

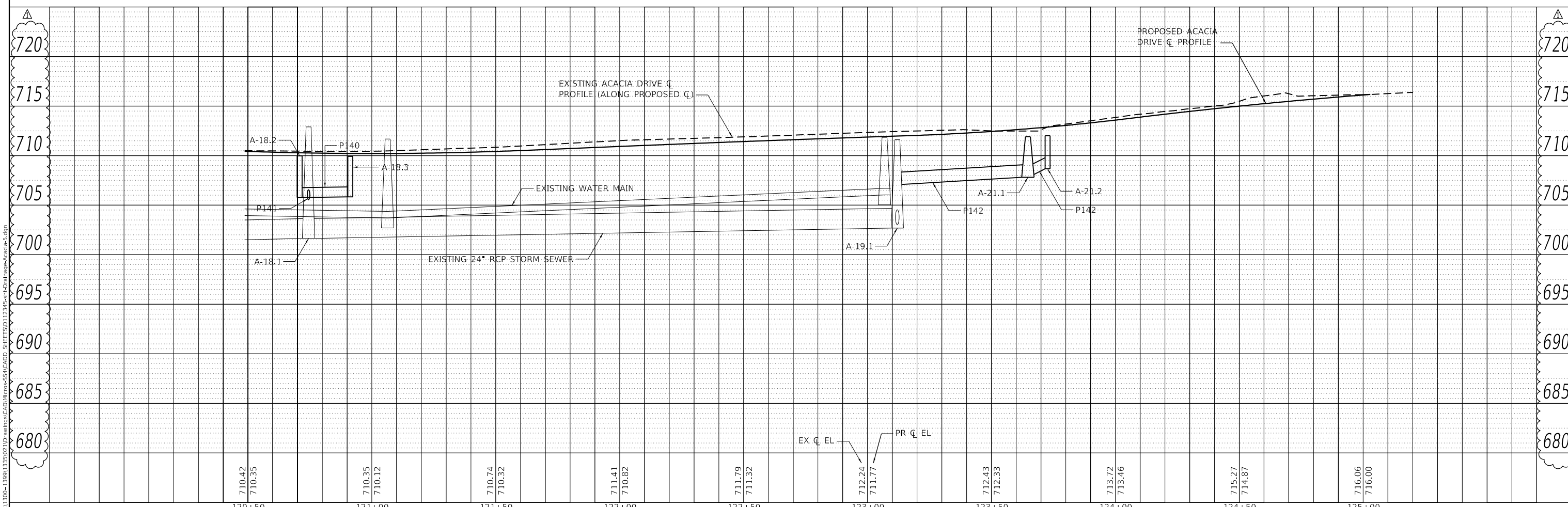
F.A.U. RTE.	SECTION	COUNTY	TOTAL SHEETS	SHEET NO.
1716	18-00013-00-FP	COOK	118	38
CONTRACT NO. 61G92				
ILLINOIS FED. AID PROJECT				

PLAN	SURVEYED	DATE
	PLOTTED	
	ALIGNED	
	CHECKED	
	FILED	
	NO.	

PROFILE	SURVEYED	DATE
	PLOTTED	
	GRADES	
	CHECKED	
	STRUCTURE	
	NOTATION	
	NO.	



NOTE:
ANY SPRINKLER SYSTEM WITHIN THE RIGHT OF WAY SHALL BE REMOVED AND REPLACED AS NECESSARY. COST SHALL BE INCLUDED IN THE COST OF SIDEWALK INSTALLATION.



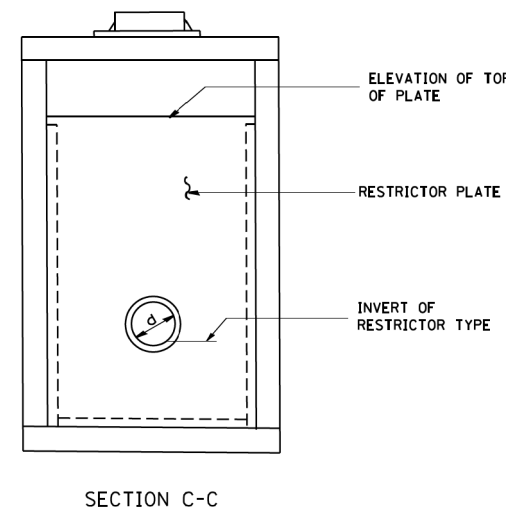
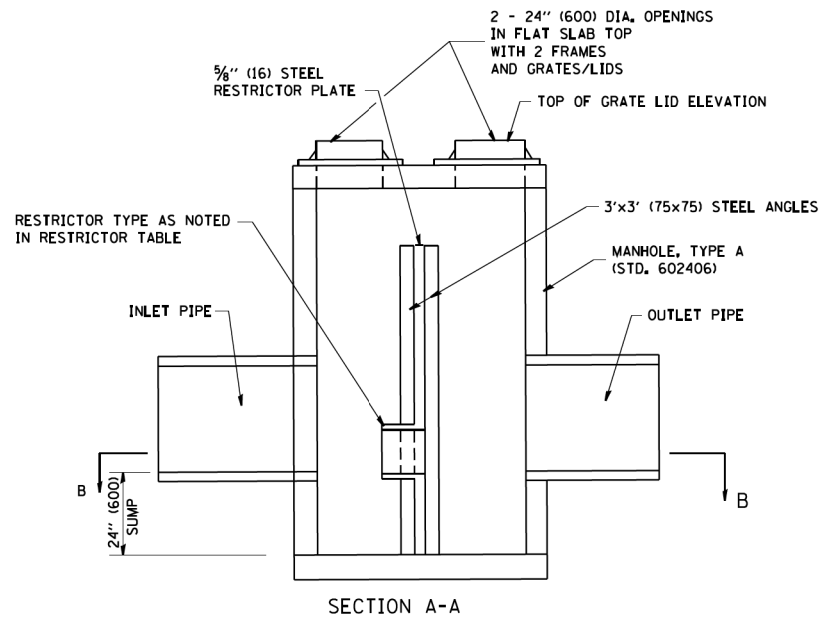
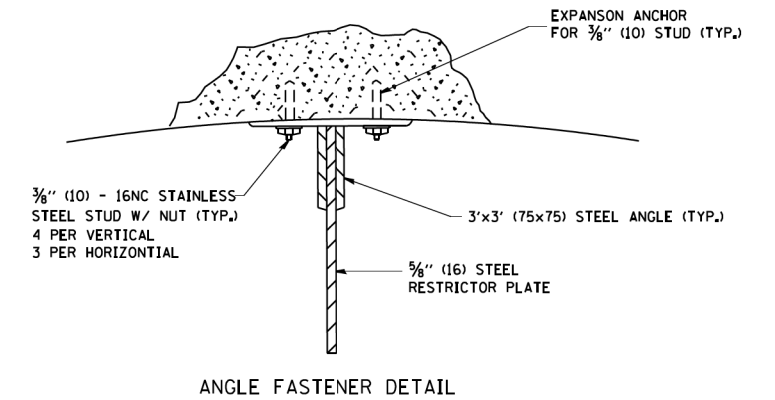
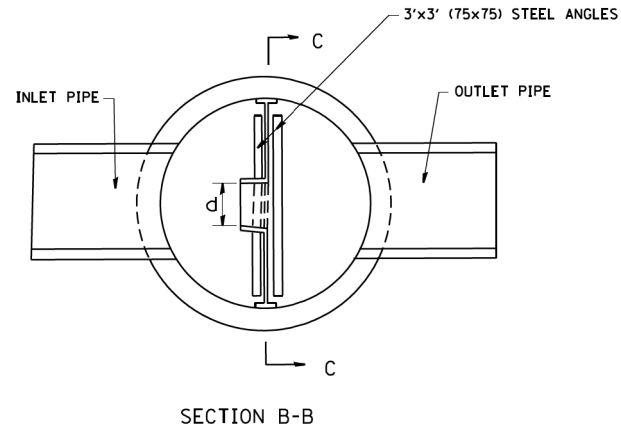
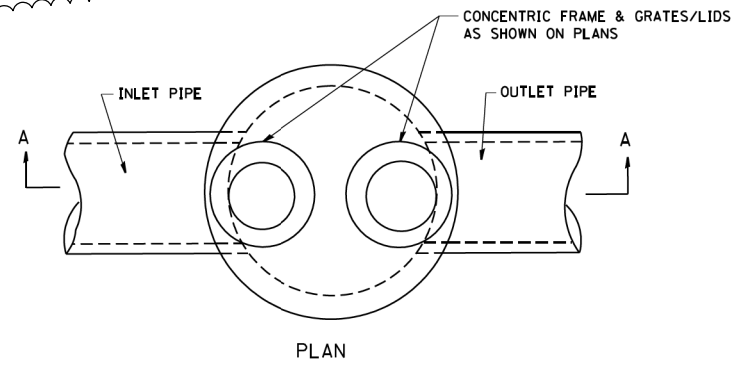
MODEL: DefRail
FILE NAME: S:\01\1300-1399\1335\0210\Drawings\CAD\MicroStation\SS\1300-1399\1335\0210\Drawings\Acacia.dwg

USER NAME = jmmyc	DESIGNED - MIG	REVISED - 02/18/2021 JFC
PLOT SCALE = 40.0000' / in.	DRAWN - DJW	REVISED -
PLOT DATE = 2/18/2021	CHECKED - MAG	REVISED -
	DATE - 12/23/2020	REVISED -

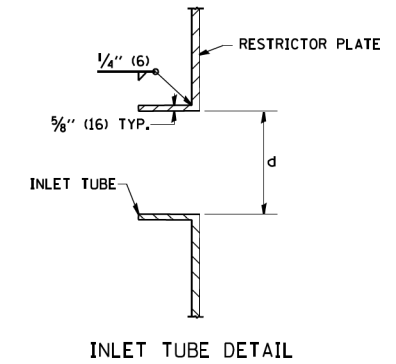
STATE OF ILLINOIS
DEPARTMENT OF TRANSPORTATION

DRAINAGE AND UTILITY PLAN AND PROFILE
ACACIA DRIVE
SCALE: 20(H)-5(V) SHEET 5 OF 6 SHEETS STA. 120+50.00 TO STA. 124+77.93

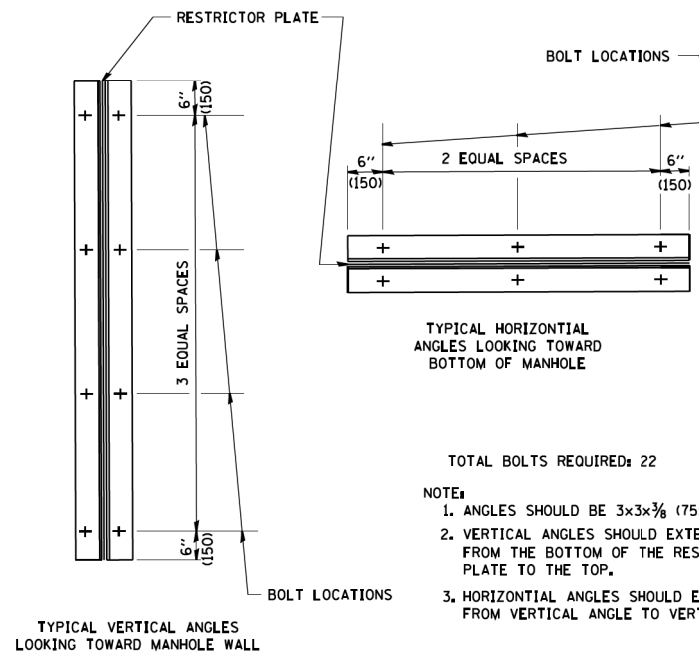
F.A.U. RTE.	SECTION	COUNTY	TOTAL SHEETS	SHEET NO.
1716	18-00013-00-FP	COOK	118	39
				CONTRACT NO. 61G92
ILLINOIS FED. AID PROJECT				



- NOTES:
- ALL STEEL ANGLES AND PLATES TO BE GALVANIZED AFTER FABRICATION.
 - ALL RESTRICTOR PLATES, ANGLES AND HARDWARE TO BE INCLUDED IN THE COST OF THE MANHOLE.
 - BASIS OF PAYMENT: "MANHOLES, TYPE A, 6 FT. (1.8 m)-DIAMETER, TYPE 1 FRAME, CLOSED LID, RESTRICTOR PLATE" EACH



STATION	MANHOLE DIAMETER	FRAME AND GRATE	RESTRICTOR TYPE	INSIDE RESTRICTOR TYPE DIAMETER in. (mm) (d)	INVERT OF RESTRICTOR TYPE	ELEVATION OF TOP OF PLATE OVERFLOW
119+23.50	72"	TYPE 1	VORTEX	TBD	700.66	711.60



- TOTAL BOLTS REQUIRED: 22
- NOTE:
- ANGLES SHOULD BE 3x3x3/8 (75x75x75)
 - VERTICAL ANGLES SHOULD EXTEND FROM THE BOTTOM OF THE RESTRICTOR PLATE TO THE TOP.
 - HORIZONTAL ANGLES SHOULD EXTEND FROM VERTICAL ANGLE TO VERTICAL ANGLE.

RESTRICTOR TYPE					
1	2	3	4	5	6
RE-ENTRANT TUBE	SHARP EDGED	SQUARE EDGED	RE-ENTRANT TUBE	SQUARE EDGED	ROUNDED
LENGTH: 1/2 TO 1 DIA.		STREAM CLEARS SIDES	LENGTH: 2-1/2 DIA.	LENGTH: 2-1/2 DIA.	
C=.52	C=.61	C=.61	C=.73	C=.82	C=.98

VALUES OF "C" FOR CIRCULAR AND SQUARE ORIFICES

STEEL ANGLE BOLTING DETAILS

△ (ENTIRE SHEET)

ALL DIMENSIONS ARE IN INCHES (MILLIMETERS) UNLESS OTHERWISE SHOWN.

STATE OF ILLINOIS
DEPARTMENT OF TRANSPORTATION

MANHOLE WITH RESTRICTOR PLATE

STRAND ASSOCIATES

1170 SOUTH HOUBOLT ROAD
JOLIET, ILLINOIS 60431
(815) 744-4200

USER NAME = Jjimyc	DESIGNED - R. SHAH	REVISED - R. SHAH 10-25-94
PLOT SCALE = 40.0000' / in.	DRAWN -	REVISED - E. GOMEZ 08-28-00
PLOT DATE = 2/18/2021	CHECKED -	REVISED - M. GOMEZ 01-08-01
	DATE - 09-09-94	REVISED - △ 02/18/2021 JFC

SCALE:	SHEET 1	OF 1	SHEETS	STA.	TO STA.

F.A.U. RTE.	SECTION	COUNTY	TOTAL SHEETS	SHEET NO.
1716	18-00013-00-FP	COOK	118	94A
BD-12		CONTRACT NO. 61G92		
ILLINOIS FED. AID PROJECT				