

SUMMARY OF QUANTITIES

CONSTRUCTION CODE: 0013 100% STATE

URBAN

PAY CODE	PAY ITEM NAME	UNIT	TOTAL QUANTITY
28000510	INLET FILTERS	EACH	3
44000155	HOT-MIX ASPHALT SURFACE REMOVAL, 1.5"	SQ YD	77
50102400	CONCRETE REMOVAL	CU YD	24.4
40604002	HOT-MIX ASPHALT SURFACE COURSE, IL-9.5FG, MIX "C", N70	TON	6.5
50300255	CONCRETE SUPERSTRUCTURE	CU YD	24.4
50300300	PROTECTIVE COAT	SQ YD	56.7
50800205	REINFORCEMENT BARS, EPOXY COATED	POUND	3620
50800515	BAR SPLICERS	EACH	56
52000110	PREFORMED JOINT STRIP SEAL	FOOT	156
67000400	ENGINEER'S FIELD OFFICE, TYPE A	CAL MO	2
67100100	MOBILIZATION	L SUM	1
70100325	TRAFFIC CONTROL AND PROTECTION, STANDARD 701423	EACH	2
70300220	TEMPORARY PAVEMENT MARKIN - LINE 4"	FOOT	9,185
70400100	TEMPORARY CONCRETE BARRIER	FOOT	725.0
70400200	RELOCATE TEMPORARY CONCRETE BARRIER	FOOT	725.0
70600250	IMPACT ATTENUATORS, TEMPORARY (NON- REDIRECTIVE), TEST LEVEL 3	EACH	2

CONSTRUCTION CODE: 0013 100% STATE

URBAN

PAY CODE	PAY ITEM NAME	UNIT	TOTAL QUANTITY
70600350	IMPACT ATTENUATORS, RELOCATE (NON- REDIRECTIVE), TEST LEVEL 3	EACH	2
78009000	MODIFIED URETHANE PAVEMENT MARKING - LETTERS AND SYMBOLS	SQ FT	124.8
78009004	MODIFIED URETHANE PAVEMENT MARKING - LINE 4"	FOOT	8,063
78009006	MODIFIED URETHANE PAVEMENT MARKING - LINE 6"	FOOT	849
78009008	MODIFIED URETHANE PAVEMENT MARKING - LINE 8"	FOOT	464
78009024	MODIFIED URETHANE PAVEMENT MARKING - LINE 24"	FOOT	36
78300202	PAVEMENT MARKING REMOVAL - WATER BLASTING	SQ FT	841
X6026200	INLETS TO BE ADJUSTED (SPECIAL)	EACH	2
X7030005	TEMPORARY PAVEMENT MARKING REMOVAL	SQ FT	3,062
Z0012754	STRUCTURAL REPAIR OF CONCRETE (DEPTH EQUAL TO OR LESS THAN 5 INCHES)	SQ FT	77

* SPECIALITY ITEM

(STRUCTURAL ITEMS TO BE PROVIDED BY BRIDGE DEPARTMENT)

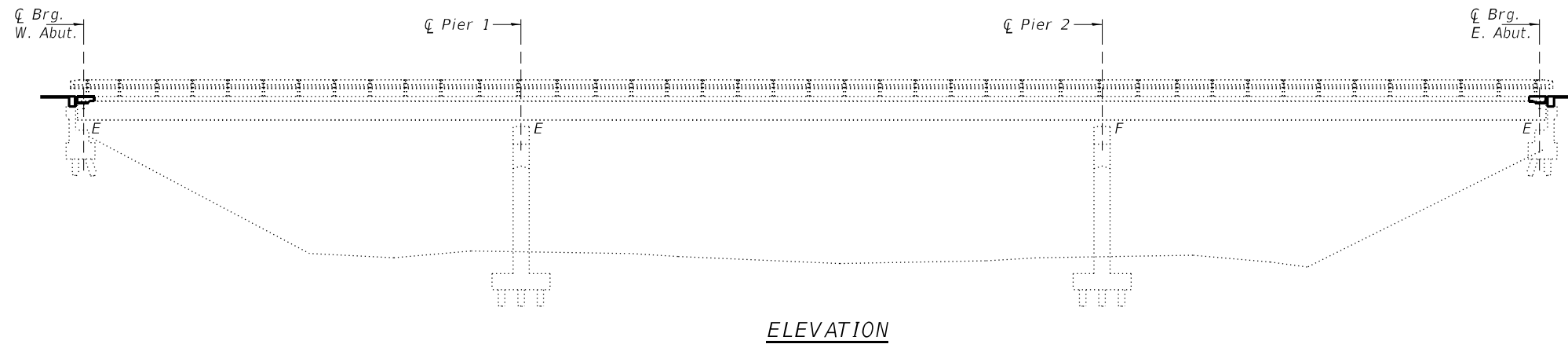
FILE = S:\PROJECTS\2018\1427D18.DOT\DESIGN\CAD_SHEETS\WD 5\1427D18-WD-5-Summary-of-QTY.dgn

	USER NAME = greg	DESIGNED - GBG	REVISED -	STATE OF ILLINOIS DEPARTMENT OF TRANSPORTATION	SUMMARY OF QUANTITIES	F.A.P. RTE. 525	SECTION (6B)BJR	COUNTY WINNEBAGO	TOTAL SHEETS 24	SHEET NO. 3
	PLOT SCALE = 240.0000' / Ft.	CHECKED - GFS	REVISIED -			S.N. 101-0073 & 101-0074	CONTRACT NO. 64P64		ILLINOIS FED. AID PROJECT	
PLOT DATE = 12/2/2020	DATE - 12/01/20	REVISIED -		SCALE N / A SHEET 1 OF 1 SHEETS STA. N / A TO STA. N / A						

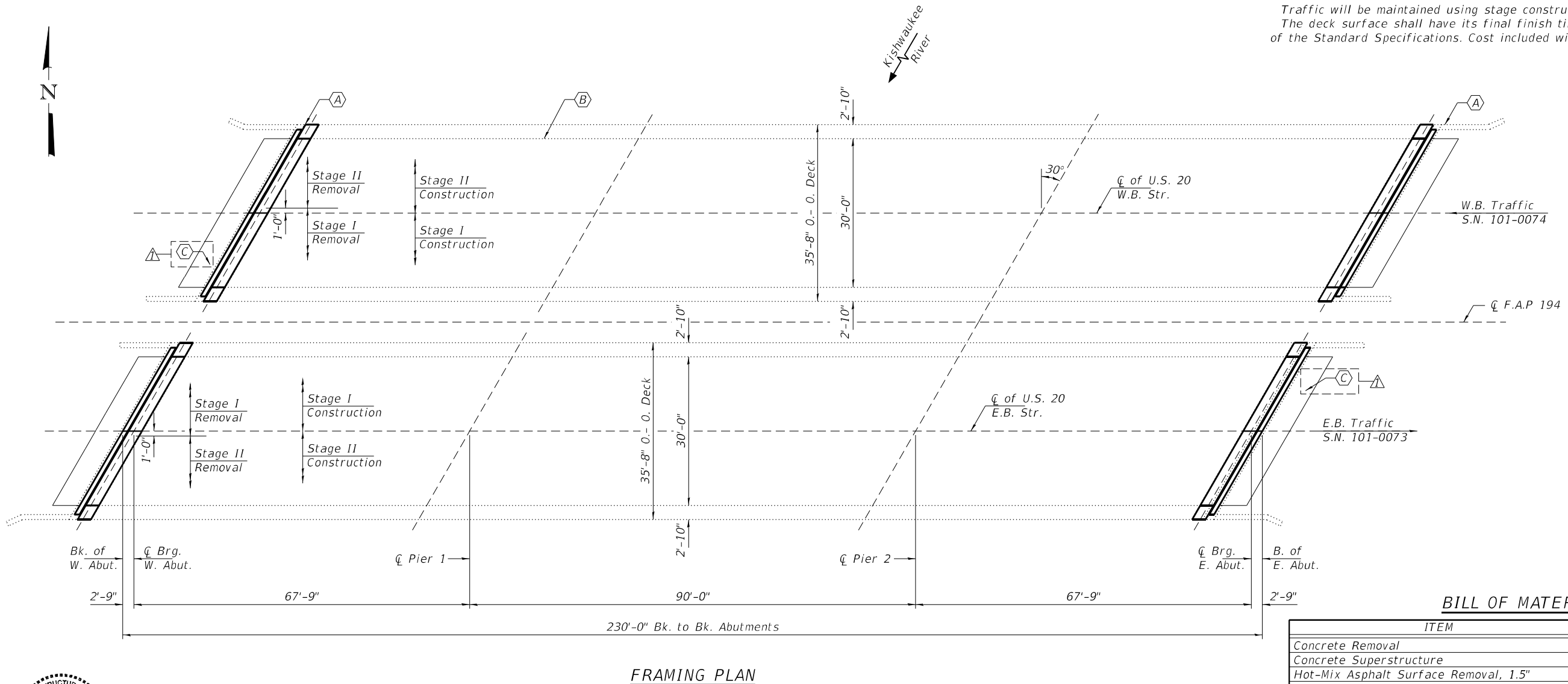
REV. 2/17/21 REV. 2/2/21 REV. 1/28/21 REV. 1/08/21

GENERAL NOTES

All structural steel shall conform to AASHTO Classification M-270 Gr. 36, unless otherwise noted.
 Plan dimensions and details relative to existing plans are subject to nominal construction variations. The Contractor shall field verify existing dimensions and details affecting new construction and make necessary approved adjustments prior to construction or ordering of materials. Such variations shall not be cause for additional compensation for a change in scope of the work, however, the Contractor will be paid for the quantity actually furnished at the unit price bid for the work.
 Prior to pouring the new concrete deck, all heavy or loose rust, loose mill scale, and other loose or potentially detrimental foreign material shall be removed from the surfaces in contact with concrete. Tightly adhered paint may remain unless otherwise noted. Removal shall be accomplished by methods that will not damage the steel and the cost will be included in the pay item covering removal of the existing concrete.
 Reinforcement bars designated (E) shall be epoxy coated.
 Existing reinforcement bars extending into the removal area shall be cleaned, straightened and incorporated into the new construction. Any reinforcement bars that are damaged during concrete removal shall be replaced with an approved bar splicer or anchorage system. Cost included with Concrete Removal.
 Joint openings shall be adjusted according to Article 520.04 of the Standard Specifications when the deck is poured at an ambient temperature other than 50° F.
 Traffic will be maintained using stage construction.
 The deck surface shall have its final finish tined according to Article 420.09(e)(1) of the Standard Specifications. Cost included with Concrete Superstructures.



ELEVATION



FRAMING PLAN

BILL OF MATERIAL

ITEM	UNIT	QUANTITY
Concrete Removal	Cu. Yd.	24.4
Concrete Superstructure	Cu. Yd.	24.4
Hot-Mix Asphalt Surface Removal, 1.5"	Sq. Yd.	77.0
Hot-Mix Asphalt Surface Course, IL-9.5, Mix "C", N70	Tons	6.5
Preformed Joint Strip Seal	Foot	156
Reinforcement Bars, Epoxy Coated	Pound	3620
Bar Splicers	Each	56
* Protective Coat	Sq. Yd.	56.7
Structural Repair of Concrete < 5"	Sq. Ft.	77

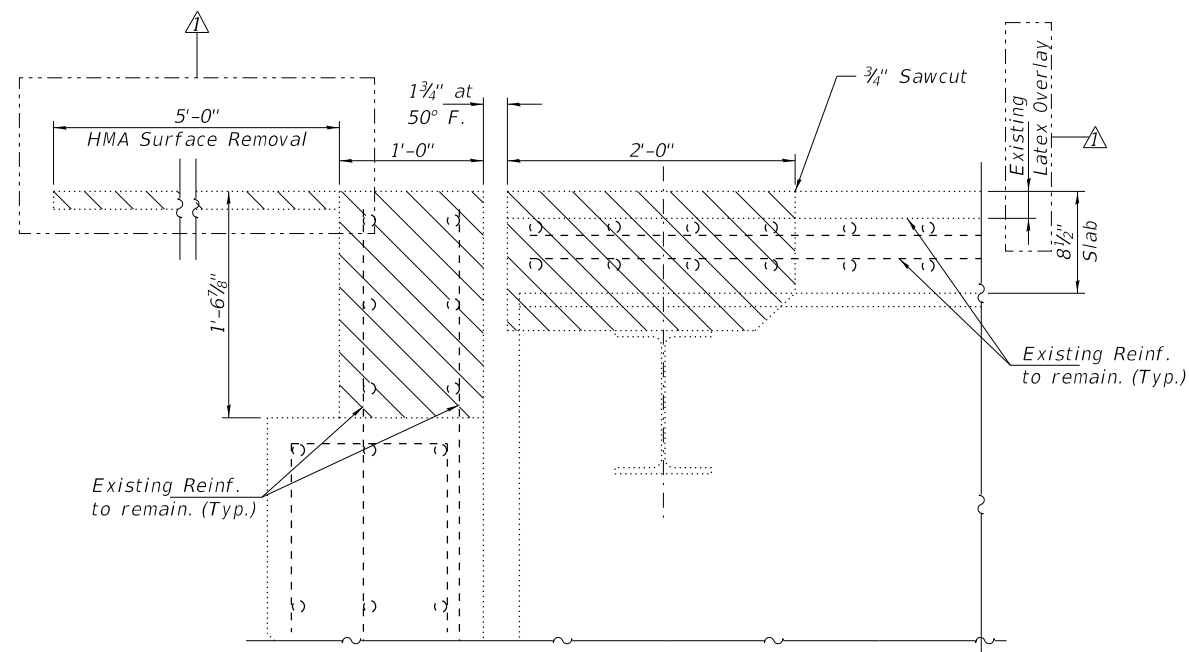
* Apply to new concrete only.

- (A) - Remove existing Neoprene Joints and install new Preformed Joint Strip Seal.
- (B) - Structural Repair of Concrete, see sheets 6 and 7 of 8 for locations.
- (C) - Remove and replace HMA, see sheets 6 and 7 of 8.

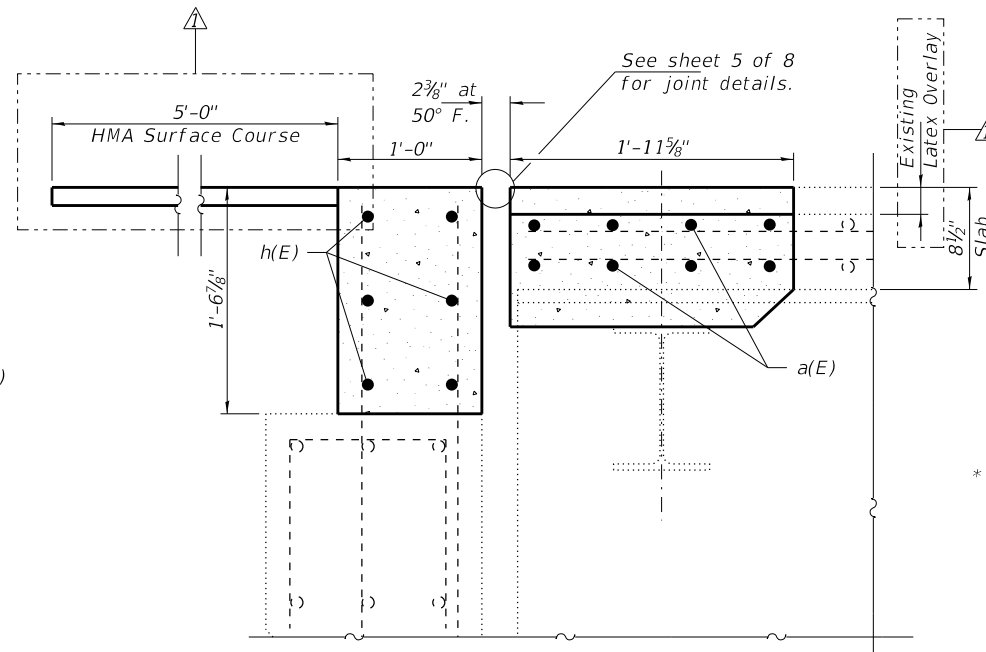


EXPIRES 11-30-2022

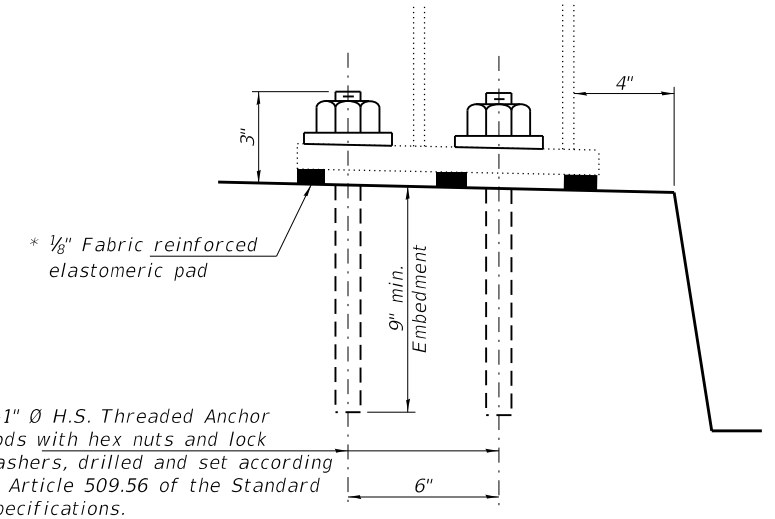
DESIGNED - Jeffrey S. Burke	EXAMINED - <i>Ting A. Deck</i>	DATE - JANUARY 31, 2020	STATE OF ILLINOIS DEPARTMENT OF TRANSPORTATION	GENERAL PLAN AND ELEVATION FAS 194 OVER W. SCHLINK ROAD SN 101-0073 & 101-0074		F.A.P. RTE. 525	SECTION (6B)BJR	COUNTY WINNEBAGO	TOTAL SHEETS 24	SHEET NO. 11	
CHECKED - Adrian T. Halloway	PASSED - <i>David Carl Puze</i>	REVISOR - 02/17/2021 ATH		SHEET NO. 1 OF 8 SHEETS		ILLINOIS	FED. AID PROJECT	CONTRACT NO. 64P64			
DRAWN - Venkat Reddy	ENGINEER OF STRUCTURAL SERVICES	REVISOR -									
CHECKED - JSB ATH	ENGINEER OF BRIDGES AND STRUCTURES										



SECTION A-A

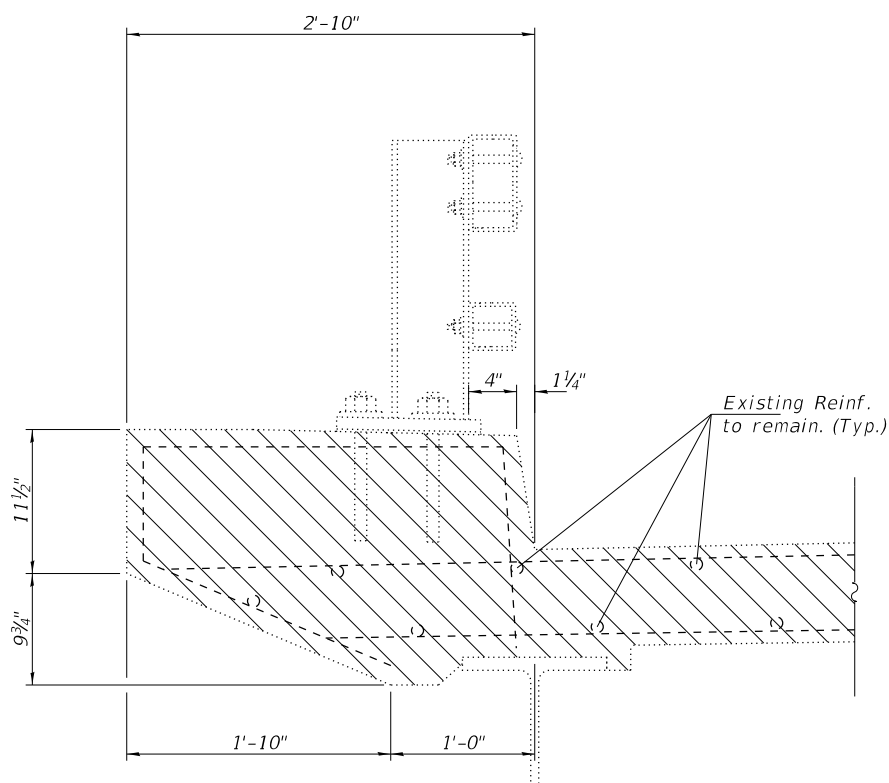


SECTION B-B

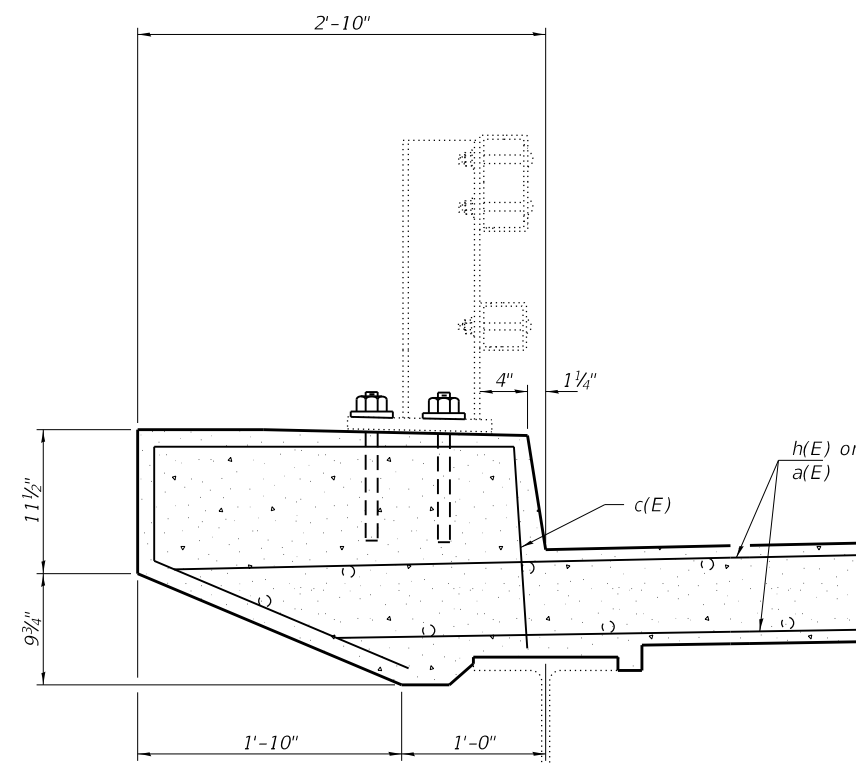


ANCHOR ROD DETAILS

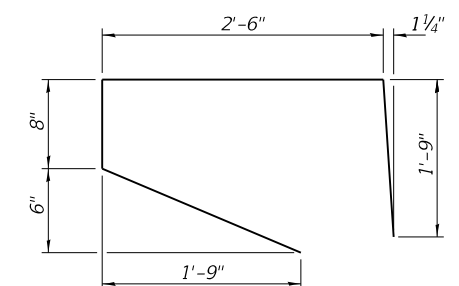
* See Sheet 3 of 8 for locations.
Cost included with Concrete Superstructure



SECTION THROUGH CURB-REMOVAL



SECTION THROUGH CURB-PROPOSED



c(E) BAR

BILL OF MATERIAL
(4 ABUTMENTS)

Bar	No.	Size	Length	Shape
a(E)	64	#6	20'-4"	—
a1(E)	16	#5	6'-0"	—
c(E)	24	#4	6'-6"	┌
h(E)	48	#6	20'-4"	—
Concrete Removal			Cu. Yd.	24.4
Concrete Superstructure			Cu. Yd.	24.4
Reinforcement Bars, Epoxy Coated			Pound	3620
Bar Splicers			Each	56

Note:
Cost of removal and re-installation of all members necessary to complete the work as detailed on the plans and as specified in the Special Provisions shall be included with Concrete Removal.

DESIGNED - JSB
CHECKED - ATH
DRAWN - Venkat Reddy
CHECKED - JSB ATH

EXAMINED
PASSED
ENGINEER OF STRUCTURAL SERVICES
ENGINEER OF BRIDGES AND STRUCTURES

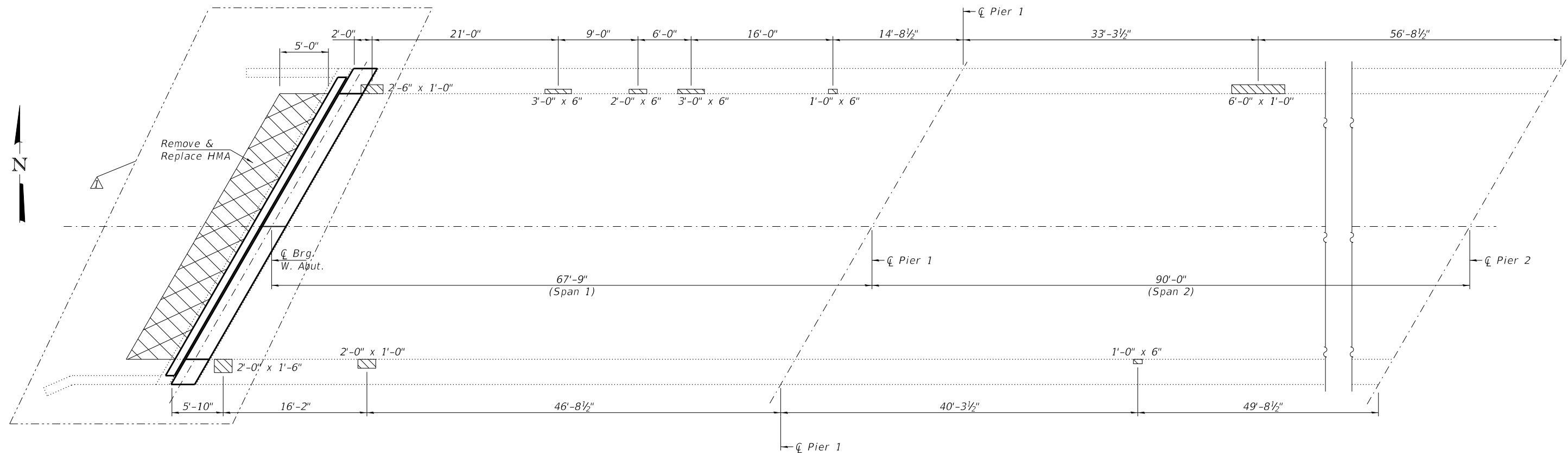
DATE - JANUARY 31, 2020
REVISED - 02/17/2021 ATH
REVISED -

STATE OF ILLINOIS
DEPARTMENT OF TRANSPORTATION

JOINT REPLACEMENT DETAILS
SN 101-0073 & 101-0074

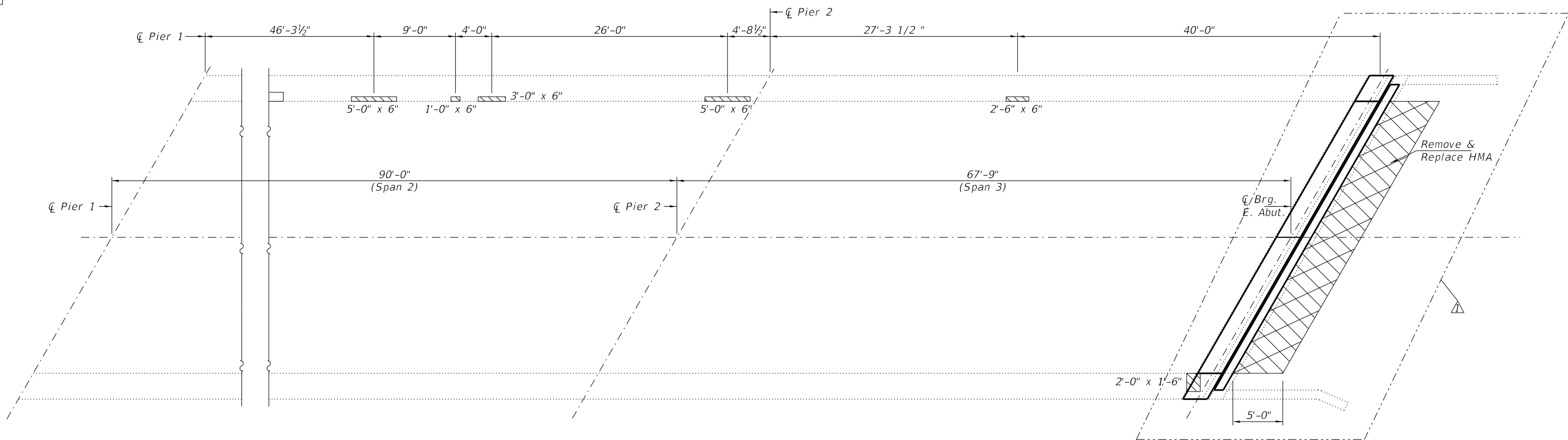
SHEET NO. 4 OF 8 SHEETS

F.A.P. RTE. SECTION COUNTY TOTAL SHEETS SHEET NO.
525 (6B)BJR WINNEBAGO 24 14
CONTRACT NO. 64P64
ILLINOIS FED. AID PROJECT



- Structural Repair of Concrete < 5"
- Remove and Replace HMA

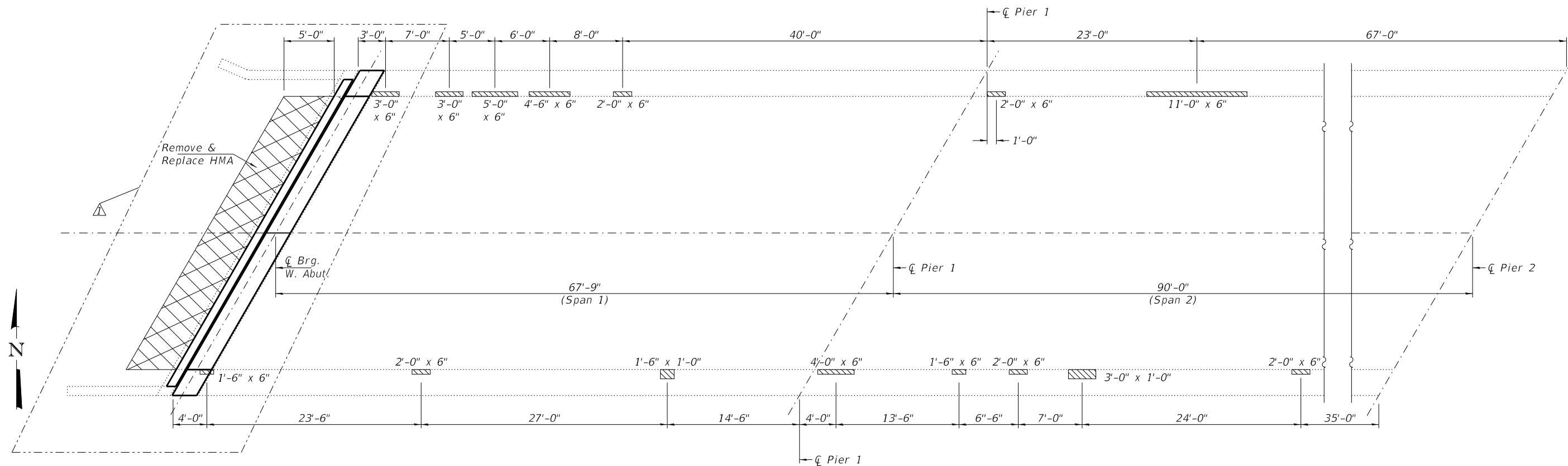
CONCRETE REPAIRS (SPAN 1 & 2)



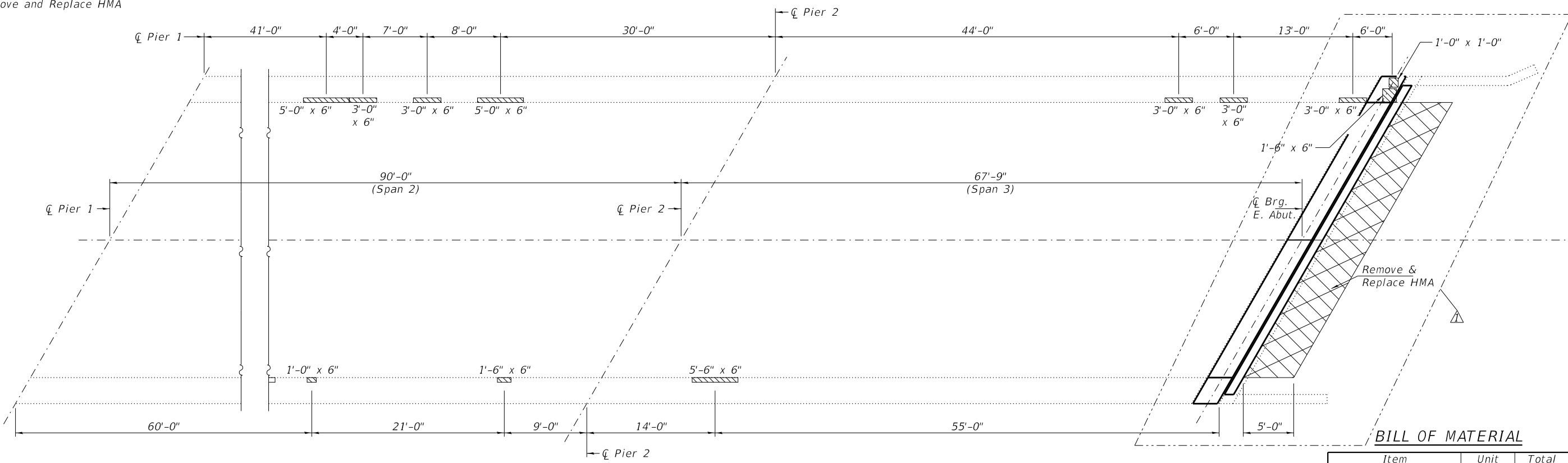
CONCRETE REPAIRS (SPAN 2 & 3)

Note:
For Bill of Material, see sheet 7 of 8.

DESIGNED - JSB	EXAMINED -	DATE - JANUARY 31, 2020	STATE OF ILLINOIS DEPARTMENT OF TRANSPORTATION	CONCRETE REPAIRS SN 101-0073	F.A.P. RTE.	SECTION	COUNTY	TOTAL SHEETS	SHEET NO.
CHECKED - ATH	PASSED -	REVISED - 02/17/2021 ATH			525	(6B)BJR	WINNEBAGO	24	16
DRAWN - Venkat Reddy	ENGINEER OF BRIDGES AND STRUCTURES	REVISED -	SHEET NO. 6 OF 8 SHEETS		CONTRACT NO. 64P64				
CHECKED - JSB ATH					ILLINOIS FED. AID PROJECT				



- Structural Repair of Concrete < 5"
- Remove and Replace HMA



BILL OF MATERIAL

Item	Unit	Total
Structural Repair of Concrete < 5"	Sq. Ft.	77

DESIGNED - JSB	EXAMINED - <i>Timothy A. Daulton</i> ENGINEER OF STRUCTURAL SERVICES	DATE - JANUARY 31, 2020
CHECKED - ATH	PASSED - <i>Carl Berger</i> ENGINEER OF BRIDGES AND STRUCTURES	REVISED - 02/17/2021 ATH
DRAWN - Venkat Reddy		REVISED -
CHECKED - JSB ATH		

**STATE OF ILLINOIS
DEPARTMENT OF TRANSPORTATION**

**CONCRETE REPAIRS
SN 101-0074**

SHEET NO. 7 OF 8 SHEETS

F.A.P. RTE.	SECTION	COUNTY	TOTAL SHEETS	SHEET NO.
525	(6B)BJR	WINNEBAGO	24	16A
CONTRACT NO. 64P64				
ILLINOIS FED. AID PROJECT				