

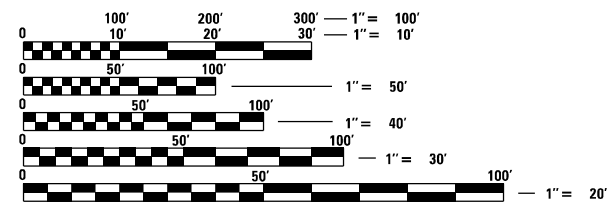
# INDEX OF SHEETS

03-05-2021 LETTING ITEM 082

- 1 COVER SHEET
- 2 GENERAL NOTES
- 3-7 SUMMARY OF QUANTITIES
- 8-10 SCHEDULE OF QUANTITIES
- 11 TYPICAL SECTIONS
- 12-20 ROADWAY PLAN SHEETS
- 21-23 REMOVAL SHEETS
- 24-50 TRAFFIC CONTROL PLAN SHEETS
- 51-64 STRUCTURE PLANS 084-0014 & 084-0015
- 65-80 STRUCTURE PLANS 084-0016 & 084-0017
- 81-87 STRUCTURE PLANS 084-0018 & 084-0019
- 88-90 DETOUR PLANS
- 91-93 REAL TIME TRAFFIC CONTROL DETAILS
- 94 LANE SHIFT SIGN DETAIL

## STANDARDS

000001-08	701401-12	725001-01
001001-02	701402-12	780001-05
542401-04	701406-12	781001-04
610001-09	701411-09	782006-01
630001-12	701421-08	
631031-17	701426-09	
642001-02	701428-01	
701101-05	701451-05	
701106-02	701901-08	
701400-10	704001-08	



FULL SIZE PLANS HAVE BEEN PREPARED USING STANDARD ENGINEERING SCALES, REDUCED SIZED PLANS WILL NOT CONFORM TO STANDARD SCALES. IN MAKING MEASUREMENTS ON REDUCED PLANS, THE ABOVE SCALES MAY BE USED.

J.U.L.I.E.  
JOINT UTILITY LOCATION INFORMATION FOR EXCAVATORS  
1-800-892-0123  
OR 811

PROJECT ENGINEER: JAY EDWARDS (217)785-0597  
PROJECT MANAGER: FILIBERTO SOTELO (217)524-0946  
JONATHAN COX (217)782-1378  
CONTRACT NO. 72L67

# STATE OF ILLINOIS DEPARTMENT OF TRANSPORTATION

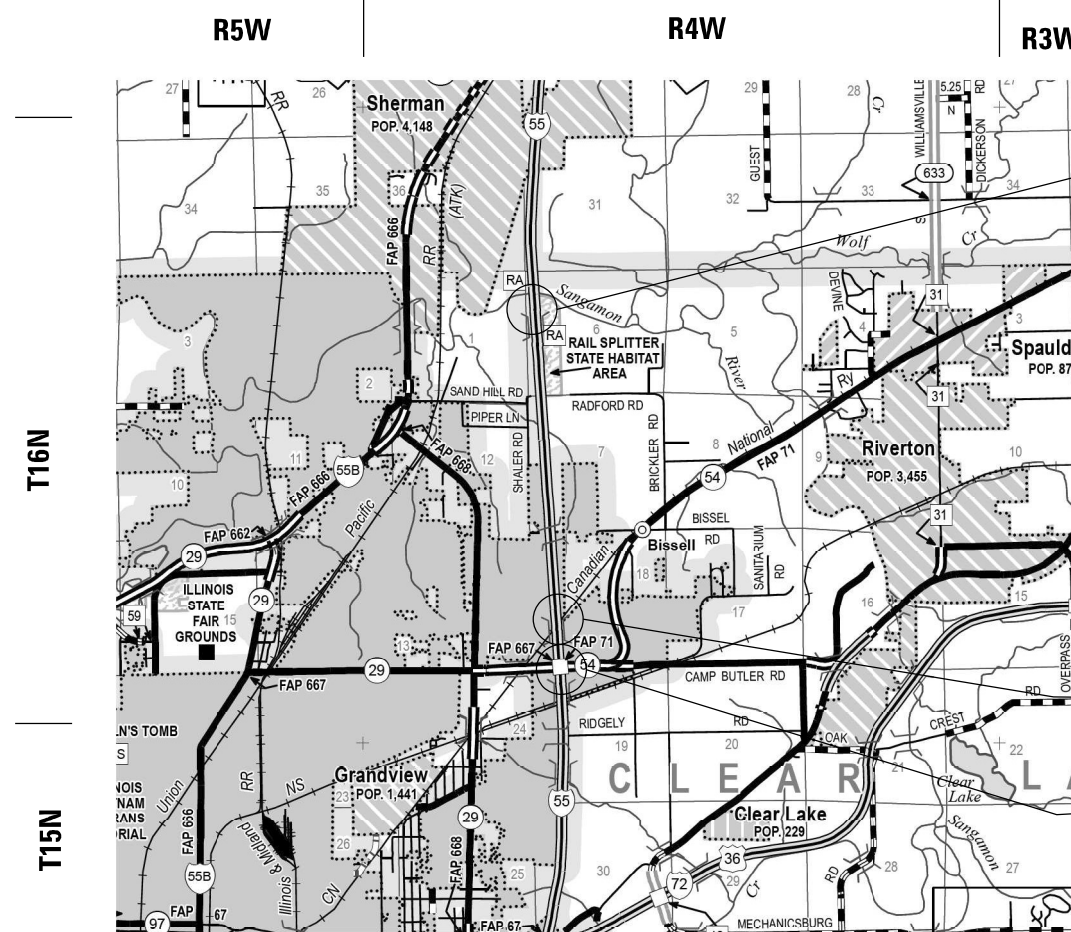
ANY REFERENCE TO CONTRACT 72L97 SHALL DENOTE 72L67.

F.A.I. RTE.	SECTION	COUNTY	TOTAL SHEETS	SHEET NO.
55	(84-2)BDR,(84-2-2)BDR-1	SANGAMON	94	1
		ILLINOIS	CONTRACT NO. 72L67	

# PROPOSED HIGHWAY PLANS

FAI 55 (I-55)  
SECTION (84-2)BDR,(84-2-2)BDR-1  
PROJECT NHPP-QDQF(941)  
BRIDGE DECK OVERLAY, BRIDGE DECK REPAIR  
SANGAMON COUNTY

C-96-054-20

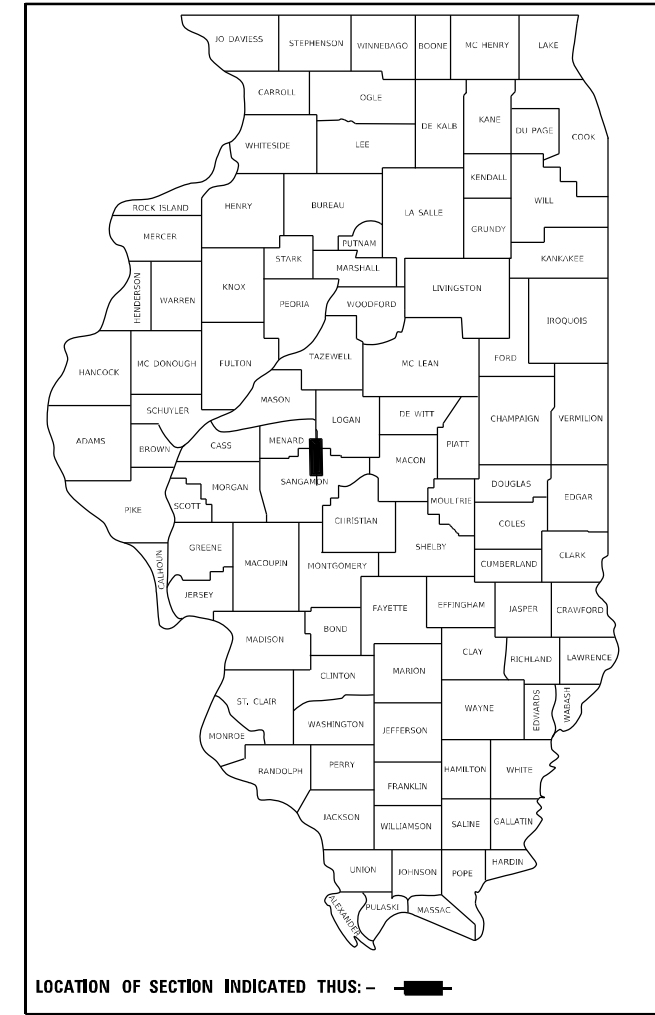


SN 084-0018  
SN 084-0019  
STA 456+62.5 TO STA 467+87.5

SN 084-0016  
SN 084-0017  
STA 592+13.8 TO STA 595+26

SN 084-0014  
SN 084-0015  
STA 608+00 TO STA 610+40.2

GROSS LENGTH = 560 FT. = 0.106 MILE  
NET LENGTH = 560 FT. = 0.106 MILE



FUNCTIONAL CLASSIFICATION  
RURAL INTERSTATE  
2019 ADT = 32,600  
P.V. = 76.8% S.U. = 3.0% M.U. = 20.2%

STATE OF ILLINOIS  
DEPARTMENT OF TRANSPORTATION  
SUBMITTED December 18, 2020  
Regional Engineer  
January 29, 2021  
Engineer of Design and Environment  
January 29, 2021  
Director of Highways Project Implementation

PRINTED BY THE AUTHORITY  
OF THE STATE OF ILLINOIS

REVIS 2-18-2021

90% FED  
10% STATE

084-0014 & 0015    084-0016 & 0017    084-0018 & 0019  
PPS: 6-00597-0000    PPS: 6-00597-0100

CODE			TOTAL	BRIDGE	BRIDGE	BRIDGE
				0059	0059	0059
				URBAN	URBAN	URBAN
* 78009012	MODIFIED URETHANE PAVEMENT MARKING - LINE 12"	FOOT	3013	1579	1434	
* 78100100	RAISED REFLECTIVE PAVEMENT MARKER	EACH	165	41	46	78
* 78200005	GUARDRAIL REFLECTORS, TYPE A	EACH	43	17	26	
78300200	RAISED REFLECTIVE PAVEMENT MARKER REMOVAL	EACH	165	41	46	78
X0325349	TEMPORARY CONCRETE BARRIER (TO REMAIN PERMANENTLY)	FOOT	3504		3504	
X0326274	REAL TIME TRAFFIC CONTROL SYSTEM	L SUM	1	0.33	0.33	0.34
X0327980	PAVEMENT MARKING REMOVAL - WATER BLASTING	SQ FT	5898	1407	1410	3081
X5030250	BRIDGE DECK GROOVING (LONGITUDINAL)	SQ YD	5196	2880	2316	
X6026108	INLETS TO BE RECONSTRUCTED WITH NEW FRAME AND GRATE, SPECIAL	EACH	8	4	4	
X7040650	REMOVE TEMPORARY CONCRETE BARRIER	FOOT	7000	3500	3500	
Z0010615	CLEANING EXISTING INLETS	EACH	2	2		
Z0012130	BRIDGE DECK SCARIFICATION 3/4"	SQ YD	7301	3640	3661	
Z0012166	BRIDGE DECK MICROSILICA CONCRETE OVERLAY 2 3/4"	SQ YD	7301	3640	3661	
Z0012754	STRUCTURAL REPAIR OF CONCRETE (DEPTH EQUAL TO OR LESS THAN 5 INCHES)	SQ FT	188	84	104	
Z0016002	DECK SLAB REPAIR (FULL DEPTH, TYPE II)	SQ YD	1286	15	21	1250



\* SPECIALTY ITEM

REVISED 2-18-2021

REV. - MS

MODEL: Default  
FILE NAME: p:\p1\jpramcom.dwt  
PROJECT: \Documents\DOT - Offices\District 8\Projects\084-2\1671\CAD\DATA\CAD\Sheets\084-2\1671-1-1500.dgn

USER NAME = EDWARDSJD	DESIGNED -	REVISED -	<b>STATE OF ILLINOIS DEPARTMENT OF TRANSPORTATION</b>	<b>SUMMARY OF QUANTITIES</b>			F.A.I RTE.	SECTION	COUNTY	TOTAL SHEETS	SHEET NO.
DRAWN -	REVISED -	55					(84-2)BDR,(84-2-2)BDR-1	SANGAMON	94	6	
PLOT SCALE = 100.0000' / in.	CHECKED -	REVISED -		SCALE:	SHEET 4	OF 5	SHEETS	STA.	TO STA.	CONTRACT NO. 72L67	
PLOT DATE = 12/18/2020	DATE -	REVISED -		ILLINOIS   FED. AID PROJECT							

90% FED  
10% STATE

CODE			TOTAL	084-0014 & 0015	084-0016 & 0017	084-0018 & 0019
				PPS: 6-00597-0000		PPS: 6-00597-0100
				BRIDGE 0059 URBAN	BRIDGE 0059 URBAN	BRIDGE 0059 URBAN
Z0016200	DECK SLAB REPAIR (PARTIAL)	SQ YD	1000			1000
Z0012755	STRUCTURAL REPAIR OF CONCRETE (DEPTH GREATER THAN 5")	SQ FT	104		104	
Z0016702	DETOUR SIGNING	L SUM	1	1		
Z0029090	DIAMOND GRINDING (BRIDGE SECTION)	SQ YD	7144	3597	3547	
Z0032500	JOINT SEALING (PATCHES)	FOOT	1624	210	164	1250
∅ Z0076600	TRAINEES	HOUR	3000	3000		
Z0048665	RAILROAD PROTECTIVE LIABILITY INSURANCE	L SUM	1		1	
∅ Z0076604	TRAINEES TRAINING PROGRAM GRADUATE	HOUR	3000	3000		
Z0065730	SLOPE WALL SLURRY PUMPING	CU YD	244	54	190	



∅ 0042

△ REVISED 2-18-2021

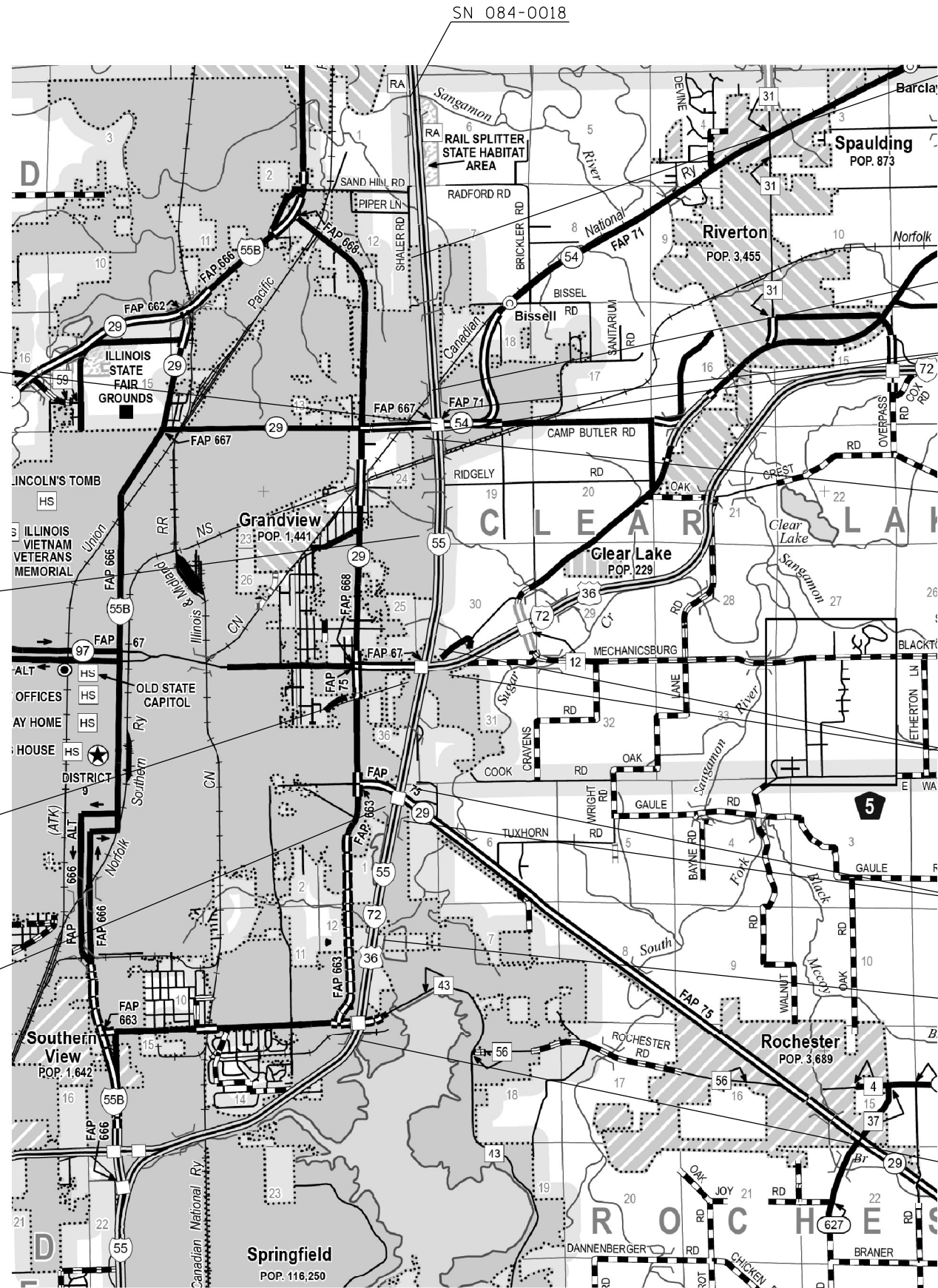
REV. - MS

MODEL: Default  
FILE NAME: p:\p1p1room.dwt  
PROJECT: I:\projects\DOT\Documents\DOT\_Offices\District\_6\Projects\084-0014\084-0014\084-0014\084-0014.dwg

USER NAME = EDWARDSJD	DESIGNED -	REVISED -	<b>STATE OF ILLINOIS DEPARTMENT OF TRANSPORTATION</b>	<b>SUMMARY OF QUANTITIES</b>			F.A.I. RTE.	SECTION	COUNTY	TOTAL SHEETS	SHEET NO.
DRAWN -	REVISOR -	55					(84-2)BDR,(84-2-2)BDR-1	SANGAMON	94	7	
PLOT SCALE = 100.0000' / in.	CHECKED -	REVISED -		SCALE:	SHEET 5	OF 5 SHEETS	STA.	TO STA.	CONTRACT NO. 72L67		
PLOT DATE = 12/18/2020	DATE -	REVISED -		ILLINOIS FED. AID PROJECT							

GENERAL NOTES

1. MILEAGES FOR WW AND PCMS ARE APPROXIMATE AND CAN BE FIELD ADJUSTED AS NECESSARY BY THE ENGINEER TO MATCH THE FIELD AND TRAFFIC CONDITIONS.
2. PCMS SHALL BE PAID FOR SEPARATLY PER CAL DAY AND NOT A PART OF THE REAL TIME TRAFFIC CONTROL SYSTEM.
3. " BE PREPARED TO STOP SIGNS" SHALL BE PLACED AT THE DISCRETION OF THE ENGINEER AS DESCRIBED IN THE SPECIAL PROVISIONS.
4. SEE SHEET 93 FOR REAL TIME TRAFFIC CONTROL SETUP DETAIL



SN 084-0015

SN 084-0018

LANE CLOSURE  
TAPER BEGINS  
1 MILE  
PCMS x2

SN 084-0017

RCA  
NB RAMPs (R)

3 MILES  
WW x2

4 MILES  
WW x2

RCA  
NB RAMPs (R)

5 MILES  
WW x2

RCA  
NB RAMPs (R)

6.2 MILES  
WW x2

7.5 MILES  
PCMS

8 MILE  
(5 MILE RCA) (R)

LEGEND

(R) - ROAD CONSTRUCTION AHEAD

WW - WIG-WAG TRAFFIC WARNING

PCMS - PORTABLE CHANGEABLE MESSAGE SIGN

REVISED 2-18-2021

MODEL: Default  
FILE NAME: p:\pub\mcrcom.dwg  
PROJECT: I:\projects\DOT\Office\District 8\Projects\084-0018\084-0018.dwg  
DRAWN: JED  
CHECKED: JED  
DATE: 12/18/2020

USER NAME = EDWARDSJD	DESIGNED -	REVISED -
	DRAWN -	REVISED -
PLOT SCALE = 100,0000' / in.	CHECKED -	REVISED -
PLOT DATE = 12/18/2020	DATE -	REVISED -

**STATE OF ILLINOIS  
DEPARTMENT OF TRANSPORTATION**

**WIG-WAG TRAFFIC WARNING SYSTEM PLACEMENT DETAIL  
(NORTHBOUND)**

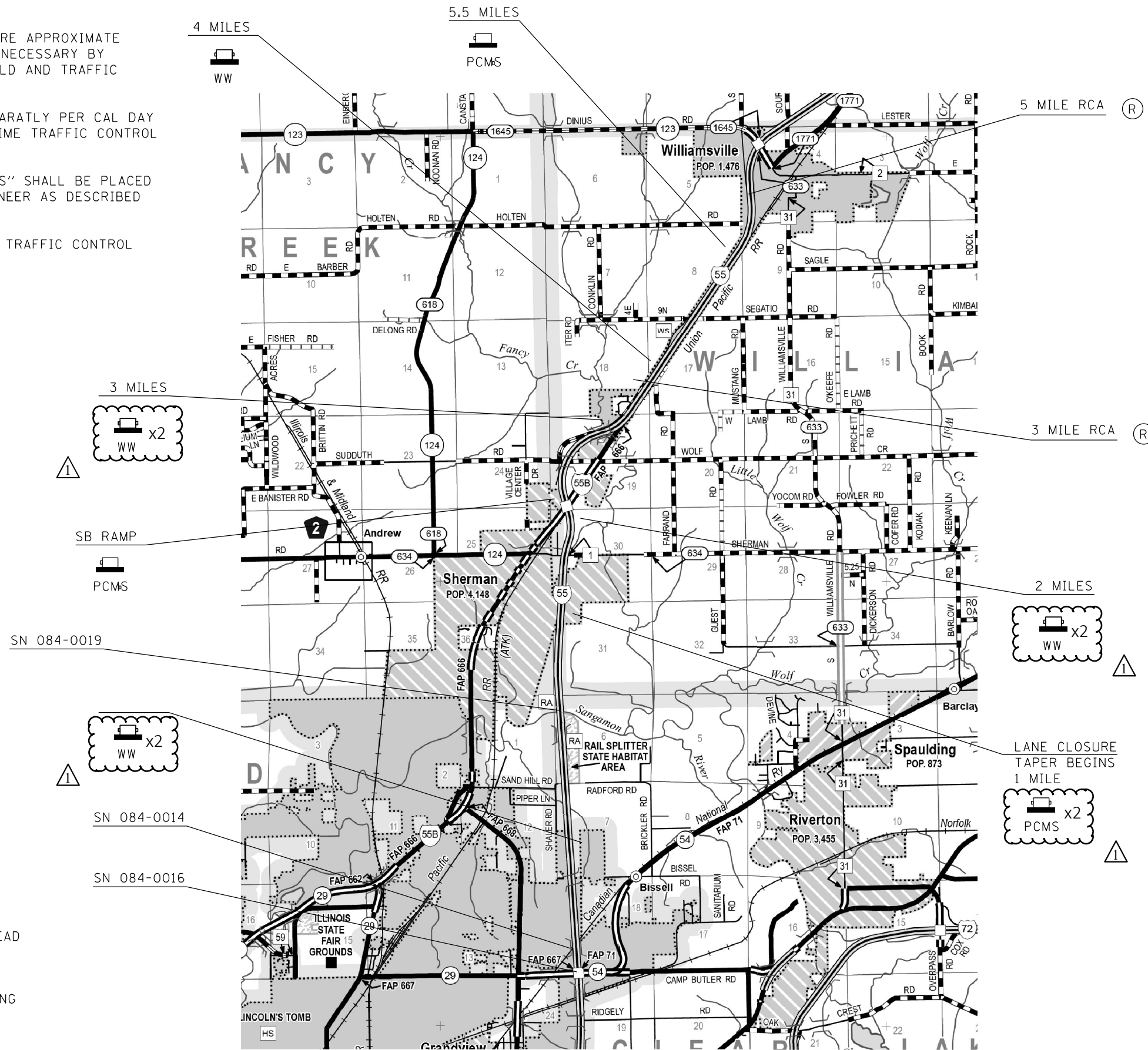
SCALE: SHEET 1 OF 3 SHEETS STA. TO STA.

F.A.I. RTE.	SECTION	COUNTY	TOTAL SHEETS	SHEET NO.
55	*	SANGAMON	94	91
			CONTRACT NO. 72L67	
ILLINOIS FED. AID PROJECT				

(84-2) BDR, (84-2-2) BDR-1

GENERAL NOTES

1. MILEAGES FOR WW AND PCMS ARE APPROXIMATE AND CAN BE FIELD ADJUSTED AS NECESSARY BY THE ENGINEER TO MATCH THE FIELD AND TRAFFIC CONDITIONS.
2. PCMS SHALL BE PAID FOR SEPARATLY PER CAL DAY AND NOT A PART OF THE REAL TIME TRAFFIC CONTROL SYSTEM.
3. " BE PREPARED TO STOP SIGNS" SHALL BE PLACED AT THE DISCRETION OF THE ENGINEER AS DESCRIBED IN THE SPECIAL PROVISIONS.
4. SEE SHEET 93 FOR REAL TIME TRAFFIC CONTROL SETUP DETAIL



LEGEND

(R) - ROAD CONSTRUCTION AHEAD

WW - WIG-WAG TRAFFIC WARNING

PCMS - PORTABLE CHANGEABLE MESSAGE SIGN

STATE OF ILLINOIS  
DEPARTMENT OF TRANSPORTATION

WIG-WAG TRAFFIC WARNING SYSTEM PLACEMENT DETAIL  
(SOUTHBOUND)

SCALE: SHEET 2 OF 3 SHEETS STA. TO STA.

REVISD 2-18-2021

USER NAME = c0xjw	DESIGNED -	REVISED -
	DRAWN -	REVISED -
PLOT SCALE = 100,0000' / in.	CHECKED -	REVISED -
PLOT DATE = 12/18/2020	DATE -	REVISED -

F.A.I. RTE.	SECTION	COUNTY	TOTAL SHEETS	SHEET NO.
55	*	SANGAMON	94	92
			CONTRACT NO. 72L67	
ILLINOIS FED. AID PROJECT				

MODEL: Default  
 FILE NAME: p:\work\m3000\dot\m3000\p\WIDOT\Documents\BDR - Office\BDR\BDR-1\CADD\BDR\BDR-1\BDR-1-SHTS.dgn