

STATE OF ILLINOIS  
DEPARTMENT OF TRANSPORTATION

F.A.I. RTE.	SECTION	COUNTY	TOTAL SHEETS	SHEET NO.
	(1-5)RS-2, (1-6)RS-1	ADAMS	21	1
		ILLINOIS	CONTRACT NO. 72L95	

# PROPOSED HIGHWAY PLANS

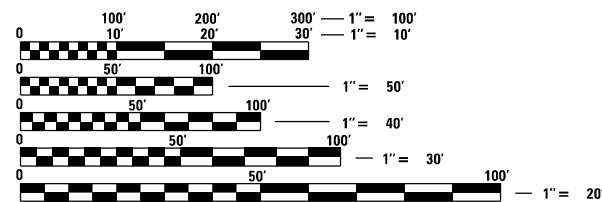
FAI ROUTE 172 (I-172)  
SECTION (1-5)RS-2, (1-6)RS-1  
PROJECT NHPP-A6ZS(212)  
MICROSURFACING  
ADAMS COUNTY

**INDEX OF SHEETS**

- 1 COVER
- 2 GENERAL NOTES
- 3-4 SUMMARY OF QUANTITIES
- 5-6 TYPICAL SECTIONS
- 7-9 SCHEDULES
- 10-20 PLAN SHEETS
- 21 DETAIL SHEET

**HIGHWAY STANDARDS**

- 000001-08 701411-09
- 001006 701426-09
- 701101-05 701451-05
- 701106-02 701901-08
- 701400-10 780001-05
- 701406-12 781001-04



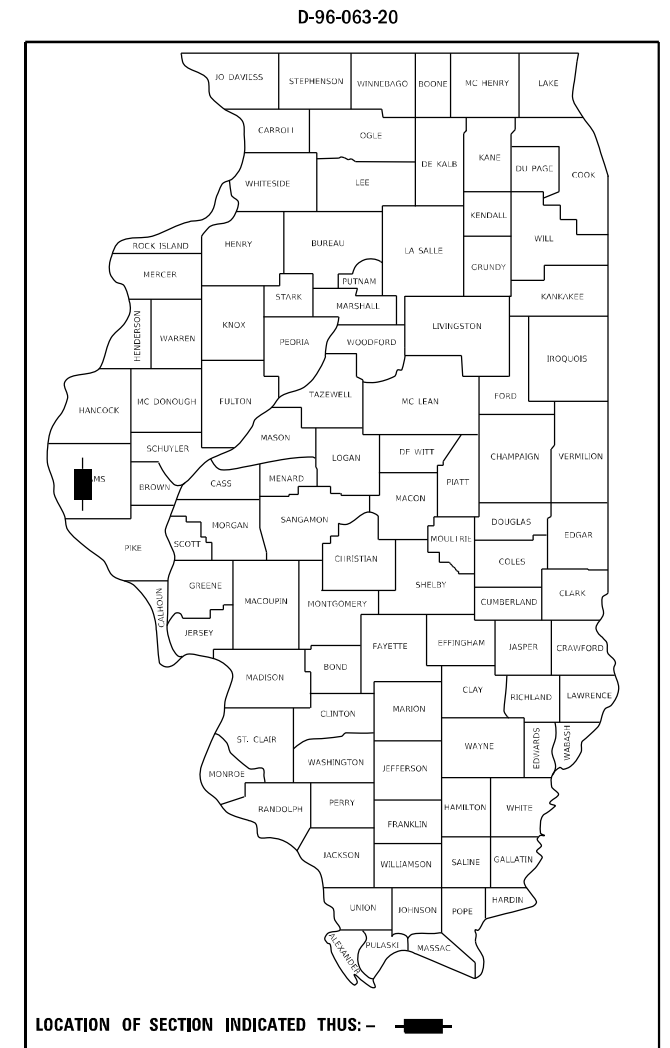
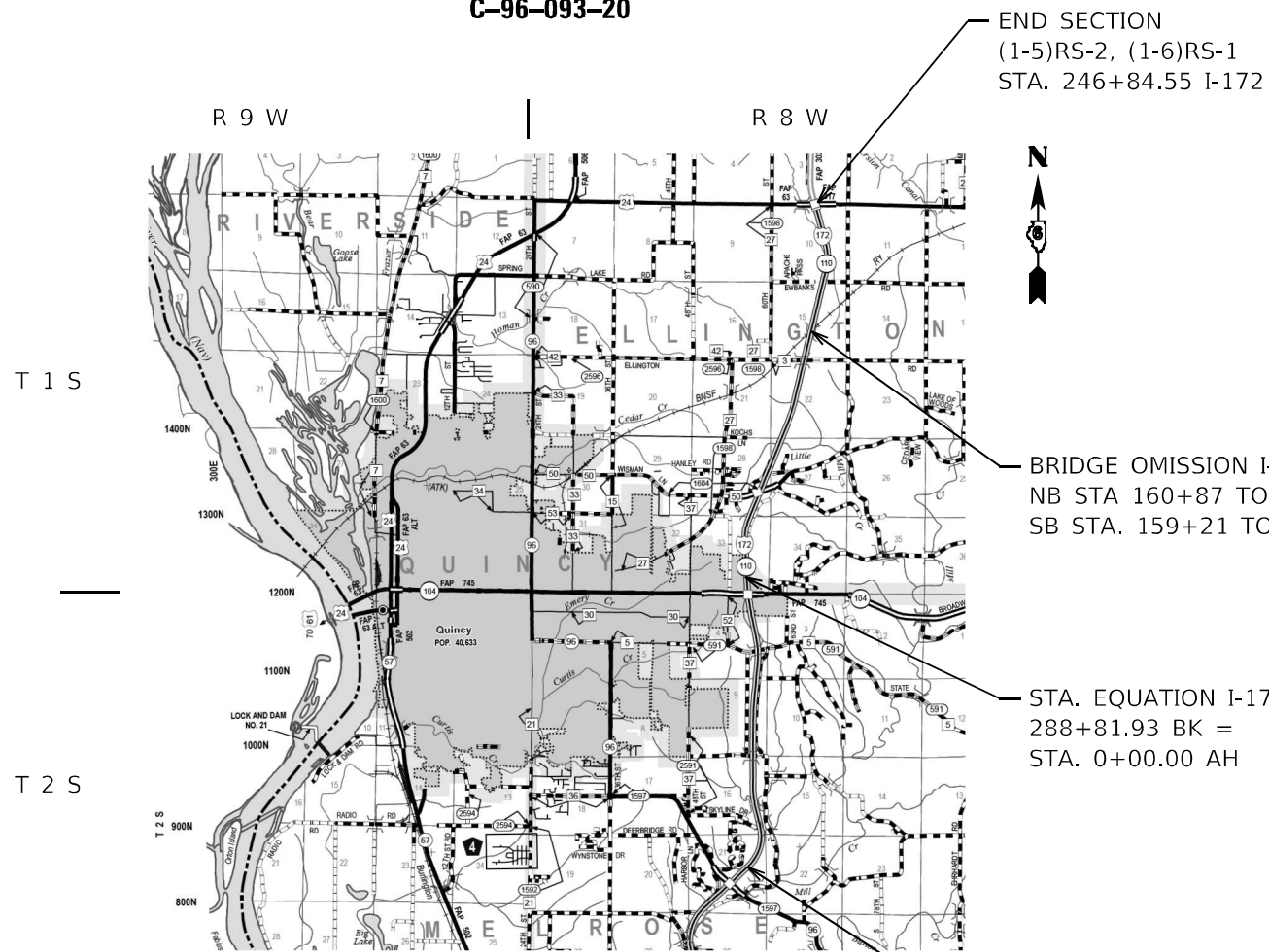
FULL SIZE PLANS HAVE BEEN PREPARED USING STANDARD ENGINEERING SCALES. REDUCED SIZED PLANS WILL NOT CONFORM TO STANDARD SCALES. IN MAKING MEASUREMENTS ON REDUCED PLANS, THE ABOVE SCALES MAY BE USED.

J.U.L.I.E.  
JOINT UTILITY LOCATION INFORMATION FOR EXCAVATORS  
1-800-892-0123  
OR 811

PROJECT ENGINEER: JON KELLEY (217) 785-2739  
PROJECT MANAGER: BRIAN MINDER (217) 557-7897

CONTRACT NO. 72L95

C-96-093-20



FUNCTIONAL CLASS: INTERSTATE  
ADT = 7,450  
PV = 82.9%, SU = 4.7%, MU = 12.4%

STATE OF ILLINOIS  
DEPARTMENT OF TRANSPORTATION

SUBMITTED December 11, 2020

*John P. Meyer*  
REGIONAL ENGINEER

January 29, 2021  
*Scott A. Clark*  
ENGINEER OF DESIGN AND ENVIRONMENT

January 29, 2021  
*James J. Guerin*  
DIRECTOR OF HIGHWAYS PROJECT IMPLEMENTATION

PRINTED BY THE AUTHORITY  
OF THE STATE OF ILLINOIS




GROSS LENGTH = 46,023.08 FT. = 8.716 MILES  
NET LENGTH = 45,741.08 FT. = 8.663 MILES

GENERAL NOTES:

COMMITMENTS

RATES OF APPLICATION USED TO CALCULATE PLAN QUANTITIES

BITUMINOUS MATERIALS (FOG SEAL) 0.08 POUNDS/ SQ FT, SHOULDER  
 BITUMINOUS MATERIALS (TACK COAT) 0.025 POUNDS/ SQ FT, MAINLINE (MILLED SURFACE ONLY)

<b>STATE OF ILLINOIS DEPARTMENT OF TRANSPORTATION DIVISION OF HIGHWAYS DISTRICT 6</b>	
EXAMINED	November 1 20 20
	
ENGINEER OF OPERATIONS	
EXAMINED	November 6 20 20
	
ENGINEER OF PROJECT IMPLEMENTATION	
EXAMINED	November 25 20 20
	
ENGINEER OF PROGRAM DEVELOPMENT	

MODEL: Default  
 FILE: \\nlsr01\pub\lhamroom\data\illinois.gov\PWIDOT\Documents\DOT\_Offices\District 6\Projects\0672195\CADD\data\CAD\sheets\0672195-ht-namote.dgn

	USER NAME = minderbt	DESIGNED - _____	REVISED - _____	<b>STATE OF ILLINOIS DEPARTMENT OF TRANSPORTATION</b>	<b>GENERAL NOTES SHEET</b>				F.A.I. RTE.	SECTION	COUNTY	TOTAL SHEETS	SHEET NO.
		DRAWN - _____	REVISED - _____		SCALE: N/A	SHEET 1	OF 1	SHEETS	STA. N/A	TO STA. N/A	ILLINOIS	FED. AID PROJECT	
	PLOT SCALE = 20.0000 ' / in.	CHECKED - _____	REVISED - _____								ADAMS	21	2
	PLOT DATE = 12/9/2020	DATE - _____	REVISED - _____								CONTRACT NO. 72L95		

MODEL: Default  
 FILE: \\mtrc-pub\pubroom\data\illinois.gov\PWIDOT\Documents\DOT\_Offices\DIR\ctc\_6\Projects\0672195\CADD\data\CAD\sheet\0672195-rh-500.dgn

CODE NO.	ITEM	UNIT	TOTAL QUANTITY	PPS NO: 6-01431-0000	
				90% FEDERAL 10% STATE	
				I-172	
				0005 URBAN	
40400001	FIBER MODIFIED ASPHALT CRACK SEALING	FOOT	96,482	96,482	
40400020	BUMP REMOVAL	EACH	10	10	
40400119	MICRO-SURFACING 2 PASSES	SQ YD	276,695	276,695	
40600290	BITUMINOUS MATERIALS (TACK COAT)	POUND	62,256	62,256	
67000400	ENGINEER'S FIELD OFFICE, TYPE A	CAL MO	5	5	
67100100	MOBILIZATION	L SUM	1	1	
70100420	TRAFFIC CONTROL AND PROTECTION, STANDARD 701411	EACH	20	20	
70100700	TRAFFIC CONTROL AND PROTECTION, STANDARD 701406	L SUM	1	1	
70100820	TRAFFIC CONTROL AND PROTECTION, STANDARD 701451	L SUM	1	1	
70107025	CHANGEABLE MESSAGE SIGN	CAL DA	210	210	
70300100	SHORT-TERM PAVEMENT MARKING	FOOT	51,208	51,208	
70300150	SHORT-TERM PAVEMENT MARKING REMOVAL	SQ FT	16,899	16,899	
* 78009000	MODIFIED URETHANE PAVEMENT MARKING - LETTERS AND SYMBOLS	SQ FT	188	188	
* 78009005	MODIFIED URETHANE PAVEMENT MARKING - LINE 5"	FOOT	230,088	230,088	

\* SPECIALTY ITEM

USER NAME = minderbt	DESIGNED - _____	REVISED - _____
DRAWN - _____	CHECKED - _____	REVISED - _____
PLOT SCALE = 20.0000 ' / in.	DATE - _____	REVISED - _____
PLOT DATE = 12/11/2020		

**STATE OF ILLINOIS  
DEPARTMENT OF TRANSPORTATION**

SUMMARY OF QUANTITIES			
SCALE: N/A	SHEET 1	OF 2 SHEETS	STA. N/A TO STA. N/A

F.A.I. RTE.	SECTION	COUNTY	TOTAL SHEETS	SHEET NO.
I-172	(1-5)RS-2, (1-6)RS-1	ADAMS	21	3
			CONTRACT NO. 72L95	
		ILLINOIS	FED. AID PROJECT	

PPS NO: 6-01431-0000  
 90% FEDERAL  
 10% STATE  
 I-172  
 0005  
 URBAN

CODE NO.	ITEM	UNIT	TOTAL QUANTITY	
* 78009006	MODIFIED URETHANE PAVEMENT MARKING - LINE 6"	FOOT	1,799	1,799
* 78009008	MODIFIED URETHANE PAVEMENT MARKING - LINE 8"	FOOT	8,615	8,615
* 78009012	MODIFIED URETHANE PAVEMENT MARKING - LINE 12"	FOOT	983	983
* 78100100	RAISED REFLECTIVE PAVEMENT MARKER	EACH	1,503	1,503
78300200	RAISED REFLECTIVE PAVEMENT MARKER REMOVAL	EACH	1,253	1,253
X0300010	BITUMINOUS MATERIALS (FOG SEAL)	POUND	126,932	126,932
X0320157	CLEANING UNDERDRAIN OUTLETS	EACH	366	366
X0322279	OUTLET MARKER	EACH	366	366
X2503000	MAINTENANCE MOWING	ACRE	216	216
Z0004542	HOT-MIX ASPHALT REMOVAL (SPECIAL)	SQ YD	276,695	276,695
∅ Z0076600	TRAINEES	HOUR	1500	1500
∅ Z0076604	TRAINEES TRAINING PROGRAM GRADUATE	HOUR	1500	1500

\* SPECIALTY ITEM

∅ 0042

REV. - MS

MODEL: Default  
 FILE: \\mhc-pub\pubroom\data\illinois.gov\PWIDOT\Documents\DOT\_Offices\District\_6\Projects\I172\95-rh-500.dgn

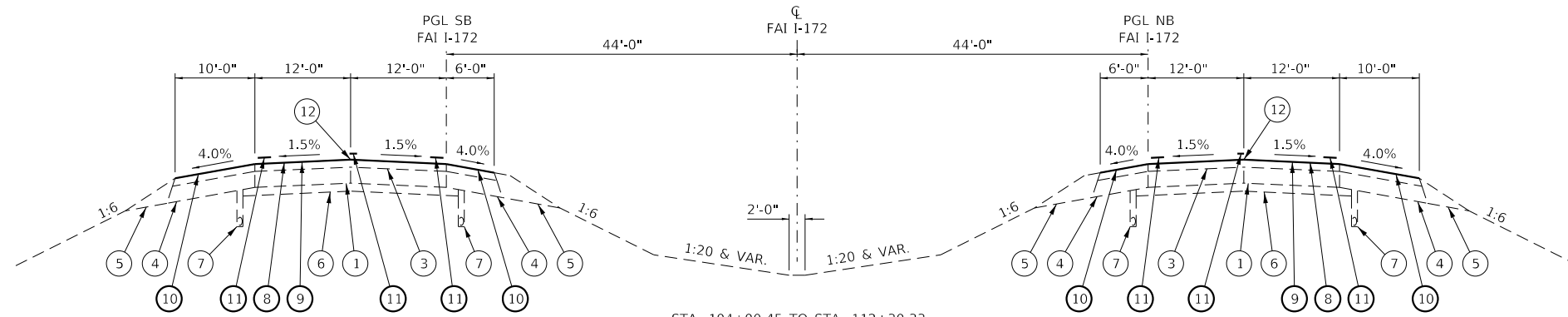
USER NAME = minderbt	DESIGNED - _____	REVISED - _____
DRAWN - _____	CHECKED - _____	REVISED - _____
PLOT SCALE = 20.0000 ' / in.	DATE - _____	REVISED - _____
PLOT DATE = 12/11/2020		

**STATE OF ILLINOIS  
 DEPARTMENT OF TRANSPORTATION**

**SUMMARY OF QUANTITIES**

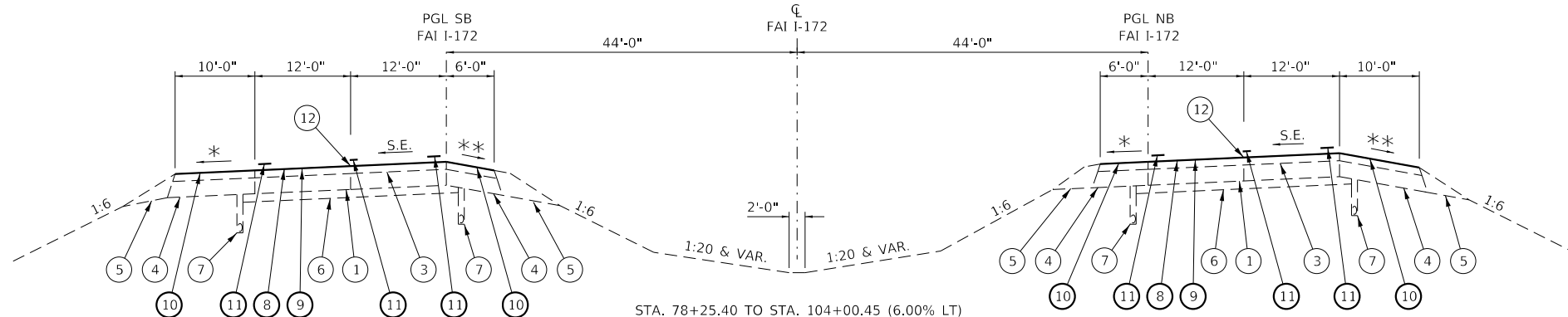
SCALE: N/A SHEET 2 OF 2 SHEETS STA. N/A TO STA. N/A

F.A.I. RTE.	SECTION	COUNTY	TOTAL SHEETS	SHEET NO.
I-172	(1-5)RS-2, (1-6)RS-1	ADAMS	21	4
			CONTRACT NO. 72L95	
		ILLINOIS	FED. AID PROJECT	



STA. 104+00.45 TO STA. 112+30.33  
 STA. 132+50.39 TO STA. 172+88.26  
 STA. 197+03.88 TO STA. 213+37.38  
 STA. 230+42.24 TO STA. 254+34.18  
 STA. 270+23.55 TO STA. 288+81.93  
 STA. 0+00.00 TO STA. 9+09.22  
 STA. 24+95.47 TO STA. 95+36.18  
 STA. 112+60.87 TO STA. 158+03.41 (SB)  
 STA. 112+60.87 TO STA. 159+69.85 (NB)  
 STA. 162+89.86 TO STA. 203+39.76 (SB)  
 STA. 164+56.30 TO STA. 203+39.76 (NB)  
 STA. 221+96.12 TO STA. 246+84.55

**STATION EQUATION:**  
 STA. 288+81.93 BK =  
 STA. 0+00.00 AH



STA. 78+25.40 TO STA. 104+00.45 (6.00% LT)  
 STA. 112+30.33 TO STA. 132+50.39 (3.40% RT)  
 STA. 172+88.26 TO STA. 197+03.88 (RC RT)  
 STA. 213+37.38 TO STA. 230+42.24 (4.00% LT)  
 STA. 254+34.18 TO STA. 270+23.55 (2.40% RT)  
 STA. 9+09.22 TO STA. 24+95.47 (5.44% RT)  
 STA. 95+36.18 TO STA. 112+60.87 (2.40% LT)  
 STA. 203+39.76 TO STA. 221+96.12 (5.44% LT)

\* 4% < SE < 6%  
 \*\* 4% > (8% - SE) > 2%

**LEGEND**

- ① EXIST CONTINUALLY REINFORCED CONCRETE PAVT, 8"
- ② EXIST STANDARD REINFORCED CONCRETE PAVT, 8"
- ③ EXIST HMA OVERLAY, 3 3/4"
- ④ EXIST HMA SHLDRS, 11 3/4"
- ⑤ EXIST AGGR SHLDRS
- ⑥ EXIST STABILIZED SUBBASE, 4"
- ⑦ EXIST PIPE UNDERDRAINS
- ⑧ PROP HMA REMOVAL (SPECIAL), 1/2"
- ⑨ PROP MICROSURFACING, 2 PASSES
- ⑩ PROP BITUMINOUS MATERIALS (FOG SEAL)
- ⑪ PROP MODIFIED URETHANE PAVEMENT MARKING, LINE - 5"
- ⑫ PROP FIBER MODIFIED ASPHALT CRACK SEALING

MODEL: Default  
 FILE: Model: Proj\pub\lanroom.dwg  
 PROJECT: ILLINOIS STATE ROAD & BRIDGE DIVISION  
 OFFICE: ILLINOIS STATE ROAD & BRIDGE DIVISION  
 PROJECT: ILLINOIS STATE ROAD & BRIDGE DIVISION  
 SHEET: ILLINOIS STATE ROAD & BRIDGE DIVISION

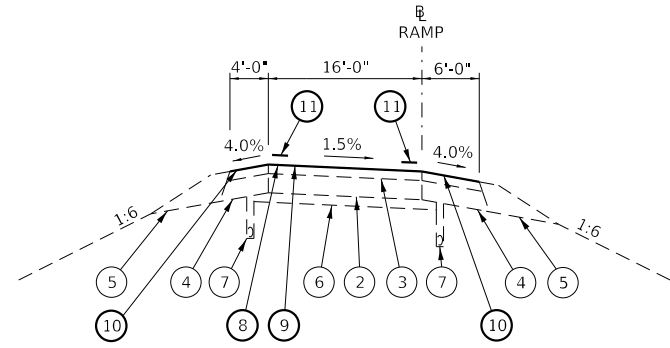
USER NAME = minderbt	DESIGNED - _____	REVISED - _____
DRAWN - _____	REVISIONS - _____	REVISIONS - _____
PLOT SCALE = 20.0000' / in.	CHECKED - _____	REVISIONS - _____
PLOT DATE = 12/11/2020	DATE - _____	REVISIONS - _____

**STATE OF ILLINOIS  
DEPARTMENT OF TRANSPORTATION**

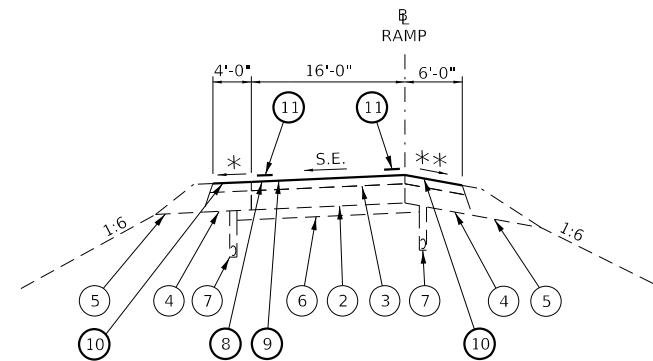
**TYPICAL SECTIONS**

SCALE: NTS SHEET 1 OF 2 SHEETS STA. N/A TO STA. N/A

F.A.I. RTE.	SECTION	COUNTY	TOTAL SHEETS	SHEET NO.
172	(1-5)RS-2, (1-6)RS-1	ADAMS	21	5
CONTRACT NO. 72L95				
ILLINOIS FED. AID PROJECT				



STA. 100+00.00 TO STA. 106+62.40 IL 104 RAMP A	STA. 100+00.00 TO STA. 106+62.40 TR 349 RAMP A
STA. 112+54.61 TO STA. 114+94.60 IL 104 RAMP A	STA. 112+76.37 TO STA. 115+16.38 TR 349 RAMP A
STA. 117+96.80 TO STA. 119+04.00 IL 104 RAMP A	STA. 121+87.70 TO STA. 122+99.70 TR 349 RAMP A
STA. 201+38.50 TO STA. 202+50.60 IL 104 RAMP B	STA. 201+32.30 TO STA. 204+42.42 TR 349 RAMP B
STA. 207+09.10 TO STA. 209+49.10 IL 104 RAMP B	STA. 210+49.19 TO STA. 220+99.14 TR 349 RAMP B
STA. 216+24.80 TO STA. 226+74.29 IL 104 RAMP B	STA. 300+00.00 TO STA. 306+62.41 TR 349 RAMP C
STA. 300+00.00 TO STA. 306+62.20 IL 104 RAMP C	STA. 312+55.25 TO STA. 314+95.24 TR 349 RAMP C
STA. 312+21.62 TO STA. 314+61.43 IL 104 RAMP C	STA. 321+11.68 TO STA. 322+23.60 TR 349 RAMP C
STA. 316+84.09 TO STA. 318+09.50 IL 104 RAMP C	STA. 401+32.30 TO STA. 404+57.15 TR 349 RAMP D
STA. 401+16.60 TO STA. 402+28.20 IL 104 RAMP D	STA. 410+63.92 TO STA. 417+34.64 TR 349 RAMP D
STA. 406+40.88 TO STA. 408+80.87 IL 104 RAMP D	
STA. 415+10.13 TO STA. 425+60.14 IL 104 RAMP D	
	STA. 100+00.00 TO STA. 106+62.40 US 24 RAMP A
	STA. 109+65.17 TO STA. 119+50.00 US 24 RAMP A
	STA. 401+05.10 TO STA. 402+12.81 US 24 RAMP D
	STA. 406+99.54 TO STA. 409+39.55 US 24 RAMP D
	STA. 415+34.18 TO STA. 425+84.14 US 24 RAMP D



\* 4% < SE < 6%  
 \*\* 4% > (8% - SE) > 2%

STA. 106+62.40 TO STA. 112+54.61 IL 104 RAMP A (8.00%)	STA. 106+62.40 TO STA. 112+76.37 TR 349 RAMP A (8.00%)
STA. 114+94.60 TO STA. 117+96.80 IL 104 RAMP A (8.00%)	STA. 115+16.38 TO STA. 121+87.70 TR 349 RAMP A (8.00%)
STA. 202+50.60 TO STA. 207+09.10 IL 104 RAMP B (8.00%)	STA. 204+42.42 TO STA. 210+49.19 TR 349 RAMP B (8.00%)
STA. 209+49.10 TO STA. 216+24.30 IL 104 RAMP B (8.00%)	STA. 306+62.41 TO STA. 312+55.25 TR 349 RAMP C (8.00%)
STA. 306+62.40 TO STA. 312+21.62 IL 104 RAMP C (8.00%)	STA. 314+95.14 TO STA. 321+11.68 TR 349 RAMP C (8.00%)
STA. 314+61.43 TO STA. 316+84.09 IL 104 RAMP C (8.00%)	STA. 404+57.15 TO STA. 410+63.92 TR 349 RAMP D (8.00%)
STA. 402+28.20 TO STA. 406+40.88 IL 104 RAMP D (8.00%)	STA. 417+34.64 TO STA. 421+14.03 TR 349 RAMP D (8.00%)
STA. 408+80.87 TO STA. 415+10.13 IL 104 RAMP D (8.00%)	
	STA. 106+62.40 TO STA. 109+65.17 US 24 RAMP A (8.00%)
	STA. 402+12.81 TO STA. 406+99.54 US 24 RAMP D (8.00%)
	STA. 409+39.55 TO STA. 415+34.18 US 24 RAMP D (8.00%)

**LEGEND**

- ① EXIST CONTINUALLY REINFORCED CONCRETE PAVT, 8"
- ② EXIST STANDARD REINFORCED CONCRETE PAVT, 8"
- ③ EXIST HMA OVERLAY, 3 3/4"
- ④ EXIST HMA SHLDRS, 11 3/4"
- ⑤ EXIST AGGR SHLDRS
- ⑥ EXIST STABILIZED SUBBASE, 4"
- ⑦ EXIST PIPE UNDERDRAINS
- ⑧ PROP HMA REMOVAL (SPECIAL), 1/2"
- ⑨ PROP MICROSURFACING, 2 PASSES
- ⑩ PROP BITUMINOUS MATERIALS (FOG SEAL)
- ⑪ PROP MODIFIED URETHANE PAVEMENT MARKING, LINE - 5"
- ⑫ PROP FIBER MODIFIED ASPHALT CRACK SEALING

MODEL: Default  
 FILE: h:\mfc\_p\pub\p\rooms\dat\illinois.gov\PHWDOT\Documents\DOT - Offices\District 6\Projects\0672195\Cadd\Drawings\0672195-rh-ty-pl-cal.dgn

USER NAME = minderbt	DESIGNED - _____	REVISED - _____
DRAWN - _____	REVISIONS - _____	
PLOT SCALE = 20.0000' / in.	CHECKED - _____	REVISED - _____
PLOT DATE = 12/11/2020	DATE - _____	REVISED - _____

**STATE OF ILLINOIS  
 DEPARTMENT OF TRANSPORTATION**

**TYPICAL SECTIONS**

SCALE: NTS SHEET 2 OF 2 SHEETS STA. N/A TO STA. N/A

F.A.I. RTE.	SECTION	COUNTY	TOTAL SHEETS	SHEET NO.
172	(1-5)RS-2, (1-6) RS-1	ADAMS	21	6
CONTRACT NO. 72L95				
ILLINOIS FED. AID PROJECT				

PAVING SCHEDULE							
STA.		STA.	LENGTH (FOOT)	40400119 MICRO-SURF 2 PASSES (SQ YD)	40600290 BIT MATLS (TACK COAT) (POUND)	X0300010 BIT MATLS (FOG SEAL) (POUND)	
<b>NBI I-172</b>							
78+25.40	to	242+21.00	16,396	43,722	9,837	20,986	
242+21.00	to	244+78.00	257	685	154	247	
244+78.00	to	248+42.00	364	971	218	408	
248+42.00	to	274+77.00	2,635	7,027	1,581	3,373	
274+77.00	to	279+01.00	424	1,131	254	475	
279+01.00	to	286+26.00	725	1,933	435	696	
286+26.00	to	288+81.93	256	682	154	328	
00+00.00	to	28+37.00	2,837	7,565	1,702	3,631	
28+37.00	to	31+40.00	303	808	182	291	
31+40.00	to	35+15.00	375	1,000	225	420	
35+15.00	to	58+41.00	2,326	6,203	1,396	2,977	
58+41.00	to	62+93.00	452	1,205	271	506	
62+93.00	to	70+07.00	714	1,904	428	685	
70+07.00	to	160+87.00	9,080	24,213	5,448	11,622	
163+69.00	to	227+18.00	6,349	16,931	3,809	8,127	
227+18.00	to	229+86.00	268	715	161	257	
229+86.00	to	233+42.00	356	949	214	399	
233+42.00	to	246+84.55	1,343	3,580	806	1,718	
<b>SB I-172</b>							
78+25.40	to	240+10.00	16,185	43,159	9,711	20,716	
240+10.00	to	247+13.00	703	1,875	422	675	
247+13.00	to	251+58.00	445	1,187	267	498	
251+58.00	to	274+31.00	2,273	6,061	1,364	2,909	
274+31.00	to	277+89.00	358	955	215	344	
277+89.00	to	280+52.00	263	701	158	295	
280+52.00	to	288+81.93	830	2,213	498	1,062	
00+00.00	to	21+93.00	2,193	5,848	1,316	2,807	
21+93.00	to	28+24.00	631	1,683	379	606	
28+24.00	to	32+81.00	457	1,219	274	512	
32+81.00	to	55+18.00	2,237	5,965	1,342	2,863	
55+18.00	to	59+74.00	456	1,216	274	438	
59+74.00	to	62+42.00	268	715	161	300	
62+42.00	to	159+21.00	9,679	25,811	5,807	12,389	
162+03.00	to	226+46.00	6,443	17,181	3,866	8,247	
226+46.00	to	233+55.00	709	1,891	425	681	
233+55.00	to	237+93.00	438	1,168	263	491	
237+93.00	to	246+84.55	892	2,377	535	1,141	

PAVING SCHEDULE							
STA.		STA.	LENGTH (FOOT)	40400119 MICRO-SURF 2 PASSES (SQ YD)	40600290 BIT MATLS (TACK COAT) (POUND)	X0300010 BIT MATLS (FOG SEAL) (POUND)	
<b>IL 104</b>							
<b>RAMP A</b>							
100+00.00	to	103+00.00	300	267	60		
103+00.00	to	114+95.00	1,195	2,124	478	956	
114+95.00	to	117+37.00	242	538	121	194	
117+37.00	to	119+04.00	167	445	100	134	
<b>RAMP B</b>							
201+38.00	to	218+59.00	1,721	3,060	688	1,377	
218+59.00	to	226+74.00	815	724	163		
<b>RAMP C</b>							
300+00.00	to	303+00.00	300	267	60		
303+00.00	to	313+52.00	1,052	1,870	421	842	
313+52.00	to	316+44.00	292	681	153	234	
316+44.00	to	318+10.00	166	480	108	133	
<b>RAMP D</b>							
401+17.00	to	417+50.00	1,633	2,903	653	1,306	
417+50.00	to	425+60.00	810	720	162		
<b>COLUMBUS RD</b>							
<b>RAMP A</b>							
100+00.00	to	103+00.00	300	267	60		
103+00.00	to	123+00.00	2,000	3,556	800	1,600	
<b>RAMP B</b>							
201+32.00	to	212+94.00	1,162	2,066	465	930	
212+94.00	to	220+99.00	805	716	161		
<b>RAMP C</b>							
300+00.00	to	303+00.00	300	267	60		
303+00.00	to	322+24.00	1,924	3,420	770	1,539	
<b>RAMP D</b>							
401+32.00	to	413+14.00	1,182	2,101	473	946	
413+14.00	to	421+14.00	800	711	160		
<b>US 24</b>							
<b>RAMP A</b>							
100+00.00	to	103+00.00	300	267	60		
103+00.00	to	117+15.00	1,415	2,516	566	1,132	
117+15.00	to	118+65.00	150	367	83	120	
118+65.00	to	119+50.00	85	264	60	68	
<b>RAMP D</b>							
401+05.00	to	417+33.00	1,628	2,894	651	1,302	
417+33.00	to	425+84.00	851	756	170		
<b>TOTALS=</b>				<b>276,695</b>	<b>62,256</b>	<b>126,932</b>	

MODEL: Default  
 FILE: Model\_PavingRoom.dwg  
 PROJECT: ILLINOIS STATE HIGHWAY DEPARTMENT  
 OFFICE: ILLINOIS STATE HIGHWAY DEPARTMENT  
 SHEET: ILLINOIS STATE HIGHWAY DEPARTMENT  
 DATE: 12/11/2020

USER NAME = minderbt	DESIGNED - _____	REVISED - _____
DRAWN - _____	REVISED - _____	
PLOT SCALE = 20.0000 ' / in.	CHECKED - _____	REVISED - _____
PLOT DATE = 12/11/2020	DATE - _____	REVISED - _____

**STATE OF ILLINOIS**  
**DEPARTMENT OF TRANSPORTATION**

<b>SCHEDULE OF QUANTITIES</b>			
SCALE: N/A	SHEET 1	OF 3 SHEETS	STA. N/A TO STA. N/A

F.A.I. RTE.	SECTION	COUNTY	TOTAL SHEETS	SHEET NO.
I-172	(1-5)RS-2, (1-6)RS-1	ADAMS	21	7
CONTRACT NO. 72L95				
ILLINOIS FED. AID PROJECT				

### STRIPING SCHEDULE

STA.		STA.	LENGTH (FOOT)	78009005 MOD URETHANE PVT MKG - LINE 5" (FOOT)		78009006 MOD URETHANE PVT MKG - LINE 6" (FOOT)	78009008 MOD URETHANE PVT MKG - LINE 8" (FOOT)	780090012 MOD URETHANE PVT MKG - LINE 12" (FOOT)	78009000 MOD URETHANE PVT MKG - LTR & SYMB (SQ FT)	70300100 SHORT-TERM PVT MKG (FOOT)	70300150 SHORT-TERM PVT MKG REM (SQ FT)	78100100 RAISED REFL PVT MKR (EACH)	78300200 RAISED REFL PVT MKR REM (EACH)
				WHITE	YELLOW	WHITE	WHITE	WHITE	WHITE				
<b>NBI-172</b>													
78+25.40	to	242+21.00	16,396	20,495	16,396					8,854	2,922	205	205
242+21.00	to	244+78.00	257	321	257	64				108	36	28	28
244+78.00	to	248+42.00	364	455	364		728	190		153	50	30	30
248+42.00	to	274+77.00	2,635	3,294	2,635					1,423	470	33	33
274+77.00	to	279+01.00	424	530	424		848			178	59	5	5
279+01.00	to	286+26.00	725	906	725	181				305	100	9	9
286+26.00	to	288+81.93	256	320	256					138	46	3	3
00+00.00	to	28+37.00	2,837	3,546	2,837					1,532	506	35	35
28+37.00	to	31+40.00	303	379	303	76				127	42	29	4
31+40.00	to	35+15.00	375	469	375		750	232		158	52	30	5
35+15.00	to	58+41.00	2,326	2,908	2,326					1,256	414	29	29
58+41.00	to	62+93.00	452	565	452		904			190	63	6	6
62+93.00	to	70+07.00	714	893	714	179				300	99	9	9
70+07.00	to	160+87.00	9,080	11,350	9,080					4,903	1,618	114	114
163+69.00	to	227+18.00	6,349	7,936	6,349					3,428	1,131	79	79
227+18.00	to	229+86.00	268	335	268	67				113	37	28	3
229+86.00	to	233+42.00	356	445	356		712	185		150	49	29	4
233+42.00	to	246+84.55	1,343	1,678	1,343					725	239	17	17
<b>SB I-172</b>													
78+25.40	to	240+10.00	16,185	20,231	16,185					8,740	2,884	202	202
240+10.00	to	247+13.00	703	879	703	176				295	97	34	9
247+13.00	to	251+58.00	445	556	445		890			187	62	31	6
251+58.00	to	274+31.00	2,273	2,841	2,273					1,227	405	28	28
274+31.00	to	277+89.00	358	448	358		716	189		150	50	4	4
277+89.00	to	280+52.00	263	329	263	66				110	36	3	3
280+52.00	to	288+81.93	830	1,037	830					448	148	10	10
00+00.00	to	21+93.00	2,193	2,741	2,193					1,184	391	27	27
21+93.00	to	28+24.00	631	789	631	158				265	87	33	8
28+24.00	to	32+81.00	457	571	457		914			192	63	31	6
32+81.00	to	55+18.00	2,237	2,796	2,237					1,208	399	28	28
55+18.00	to	59+74.00	456	570	456		912	187		192	63	6	6
59+74.00	to	62+42.00	268	335	268	67				113	37	3	3
62+42.00	to	159+21.00	9,679	12,099	9,679					5,227	1,725	121	121
162+03.00	to	226+46.00	6,443	8,054	6,443					3,479	1,148	81	81
226+46.00	to	233+55.00	709	886	709	177				298	98	34	9
233+55.00	to	237+93.00	438	548	438		876			184	61	30	5
237+93.00	to	246+84.55	892	1,114	892					481	159	11	11
<b>IL 104</b>													
<b>RAMP A</b>													
106+20.00	to	114+95.00	875	875	875		37			210	69	15	15
114+95.00	to	117+37.00	242	242	242	61	37			58	19		
117+37.00	to	119+04.00	167	167	167	167		62.4		90	30		
<b>RAMP B</b>													
201+39.00	to	215+30.00	1,391	1,391	1,391					334	110		

MODEL: Default  
 FILE: Model: StripingSchedule.dwg  
 PROJECT: I-172-2-1-11-2020  
 SHEET: 21 OF 21  
 DATE: 12/11/2020

USER NAME = minderdt	DESIGNED - _____	REVISED - _____
PLOT SCALE = 20.0000' / in.	CHECKED - _____	REVISED - _____
PLOT DATE = 12/11/2020	DATE - _____	REVISED - _____

**STATE OF ILLINOIS  
DEPARTMENT OF TRANSPORTATION**

<b>SCHEDULE OF QUANTITIES</b>			
SCALE: N/A	SHEET 2	OF 3 SHEETS	STA. N/A TO STA. N/A

F.A.I. RTE.	SECTION	COUNTY	TOTAL SHEETS	SHEET NO.
I-172	(1-5)RS-2, (1-6)RS-1	ADAMS	21	8
CONTRACT NO. 72L95				
ILLINOIS FED. AID PROJECT				



### STRIPING SCHEDULE

STA.		STA.	LENGTH (FOOT)	78009005 MOD URETHANE PVT MKG - LINE 5" (FOOT)		78009006 MOD URETHANE PVT MKG - LINE 6" (FOOT)	78009008 MOD URETHANE PVT MKG - LINE 8" (FOOT)	78009012 MOD URETHANE PVT MKG - LINE 12" (FOOT)	78009000 MOD URETHANE PVT MKG - LTR & SYMB (SQ FT)	70300100 SHORT-TERM PVT MKG (FOOT)	70300150 SHORT-TERM PVT MKG REM (SQ FT)	78100100 RAISED REFL PVT MKR (EACH)	78300200 RAISED REFL PVT MKR REM (EACH)
				WHITE	YELLOW	WHITE	WHITE	WHITE	WHITE				
<b>RAMP C</b>													
306+20.00	to	313+52.00	732	732	732		37		176	58	14	14	
313+52.00	to	316+44.00	292	292	292	73	37		70	23			
316+44.00	to	318+10.00	166	166	166	166		62.4	90	30			
<b>RAMP D</b>													
401+17.00	to	414+18.00	1,301	1,301	1,301				312	103			
<b>COLUMBUS RD</b>													
<b>RAMP A</b>													
106+70.00	to	123+00.00	1,630	1,630	1,630		73		391	129	15	15	
<b>RAMP B</b>													
201+32.00	to	209+30.00	798	798	798				192	63			
<b>RAMP C</b>													
306+30.00	to	322+24.00	1,594	1,594	1,594		73		383	126	15	15	
<b>RAMP D</b>													
401+32.00	to	409+40.00	808	808	808				194	64			
<b>US 24</b>													
<b>RAMP A</b>													
106+20.00	to	117+15.00	1,095	1,095	1,095		37		263	87	8	8	
117+15.00	to	118+65.00	150	150	150	38	37		36	12			
118+65.00	to	119+50.00	85	85	85	85		62.4	46	15			
<b>RAMP D</b>													
401+05.00	to	414+40.00	1,335	1,335	1,335				320	106			
<b>TOTAL=</b>				<b>229,888</b>	<b>1,799</b>	<b>8,615</b>	<b>983</b>	<b>187.2</b>	<b>51,184</b>	<b>16,891</b>	<b>1,503</b>	<b>1,253</b>	

### REMOVAL SCHEDULE

STA.		STA.	LENGTH (FOOT)	Z0004542 HMA REM (SPCL) 1/2" (SQ YD)
<b>NB I-172</b>				
78+25.40	to	288+81.93	21,057	56,151
00+00.00	to	160+87.00	16,087	42,899
163+69.00	to	246+84.55	8,316	22,175
<b>SB I-172</b>				
78+25.40	to	288+81.93	21,057	56,151
00+00.00	to	159+21.00	15,921	42,456
162+03.00	to	246+84.55	8,482	22,617
<b>IL 104</b>				
<b>RAMP A</b>				
100+00.00	to	103+00.00	300	267
103+00.00	to	114+95.00	1,195	2,124
114+95.00	to	117+37.00	242	538
117+37.00	to	119+04.00	167	445
<b>RAMP B</b>				
201+38.00	to	218+59.00	1,721	3,060
218+59.00	to	226+74.00	815	724
<b>RAMP C</b>				
300+00.00	to	303+00.00	300	267
303+00.00	to	313+52.00	1,052	1,870
313+52.00	to	316+44.00	292	681
316+44.00	to	318+10.00	166	480
<b>RAMP D</b>				
401+17.00	to	417+50.00	1,633	2,903
417+50.00	to	425+60.00	810	720
<b>COLUMBUS RD</b>				
<b>RAMP A</b>				
100+00.00	to	103+00.00	300	267
103+00.00	to	123+00.00	2,000	3,556
<b>RAMP B</b>				
201+32.00	to	212+94.00	1,162	2,066
212+94.00	to	220+99.00	805	716
<b>RAMP C</b>				
300+00.00	to	303+00.00	300	267
303+00.00	to	322+24.00	1,924	3,420
<b>RAMP D</b>				
401+32.00	to	413+14.00	1,182	2,101
413+14.00	to	421+14.00	800	711
<b>US 24</b>				
<b>RAMP A</b>				
100+00.00	to	103+00.00	300	267
103+00.00	to	117+15.00	1,415	2,516
117+15.00	to	118+65.00	150	367
118+65.00	to	119+50.00	85	264
<b>RAMP D</b>				
401+05.00	to	417+33.00	1,628	2,894
417+33.00	to	425+84.00	851	756
<b>TOTAL=</b>				<b>276,695</b>

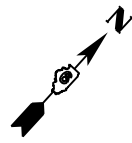
MODEL: Default  
 FILE: \\mhc-pw\pub\anr\mhc\data\illinois\gov\pww\DOT\Documents\DOT - Offices\District 6\Projects\0672195\CAD\data\CAD\sheet\0672195-rt-schedule.dgn

USER NAME = minderbt	DESIGNED - _____	REVISED - _____
DRAWN - _____	REVISIONS - _____	REVISIONS - _____
PLOT SCALE = 20.0000 ' / in.	CHECKED - _____	REVISIONS - _____
PLOT DATE = 12/11/2020	DATE - _____	REVISIONS - _____

**STATE OF ILLINOIS  
DEPARTMENT OF TRANSPORTATION**

<b>SCHEDULE OF QUANTITIES</b>	
SCALE: N/A	SHEET 3 OF 3 SHEETS
STA. N/A	TO STA. N/A

F.A.I. RTE.	SECTION	COUNTY	TOTAL SHEETS	SHEET NO.
I-172	(1-5)RS-2, (1-6)RS-1	ADAMS	21	9
CONTRACT NO. 72L95				
ILLINOIS		FED. AID PROJECT		



EXIST. CURVE 2254  
 PI STA. = 317+10.04  
 $\Delta = 51^\circ 53' 30''$  (LT)  
 $D = 11^\circ 59' 59''$   
 $R = 477.47'$   
 $T = 232.32'$   
 $L = 432.44'$   
 $E = 53.52'$   
 $e = \text{---}$   
 T.R. =           
 S.E. RUN =           
 P.C. STA. = 314+77.72  
 P.T. STA. = 319+10.16

EXIST. CURVE 2256  
 PI STA. = 309+64.35  
 $\Delta = 43^\circ 10' 25''$  (RT)  
 $D = 7^\circ 30' 00''$   
 $R = 763.93'$   
 $T = 302.26'$   
 $L = 575.64'$   
 $E = 57.62'$   
 $e = \text{---}$   
 T.R. =           
 S.E. RUN =           
 P.C. STA. = 306+62.09  
 P.T. STA. = 312+37.73

EXIST. CURVE 2262  
 PI STA. = 301+03.47  
 $\Delta = 4^\circ 27' 09''$  (RT)  
 $D = 2^\circ 09' 09''$   
 $R = 2,661.75'$   
 $T = 103.47'$   
 $L = 206.84'$   
 $E = 2.01'$   
 $e = \text{---}$   
 T.R. =           
 S.E. RUN =           
 P.C. STA. = 300+00.00  
 P.T. STA. = 302+06.84

EXIST. CURVE 1017  
 PI STA. = 90+24.79  
 $\Delta = 61^\circ 39' 03''$  (LT)  
 $D = 1^\circ 59' 46''$   
 $R = 2,870.39'$   
 $T = 1,712.82'$   
 $L = 3,088.56'$   
 $E = 472.20'$   
 $e = \text{---}$   
 T.R. =           
 S.E. RUN =           
 P.C. STA. = 73+11.97  
 P.T. STA. = 104+00.53

EXIST. CURVE 2284  
 PI STA. = 210+07.79  
 $\Delta = 42^\circ 25' 48''$  (RT)  
 $D = 7^\circ 30' 00''$   
 $R = 763.93'$   
 $T = 296.54'$   
 $L = 565.73'$   
 $E = 55.54'$   
 $e = \text{---}$   
 T.R. =           
 S.E. RUN =           
 P.C. STA. = 207+11.25  
 P.T. STA. = 212+76.97

EXIST. CURVE 2289  
 PI STA. = 220+64.24  
 $\Delta = 10^\circ 14' 28''$  (LT)  
 $D = 1^\circ 56' 37''$   
 $R = 2,947.97'$   
 $T = 264.16'$   
 $L = 526.92'$   
 $E = 11.81'$   
 $e = \text{---}$   
 T.R. =           
 S.E. RUN =           
 P.C. STA. = 218+00.08  
 P.T. STA. = 223+27.00

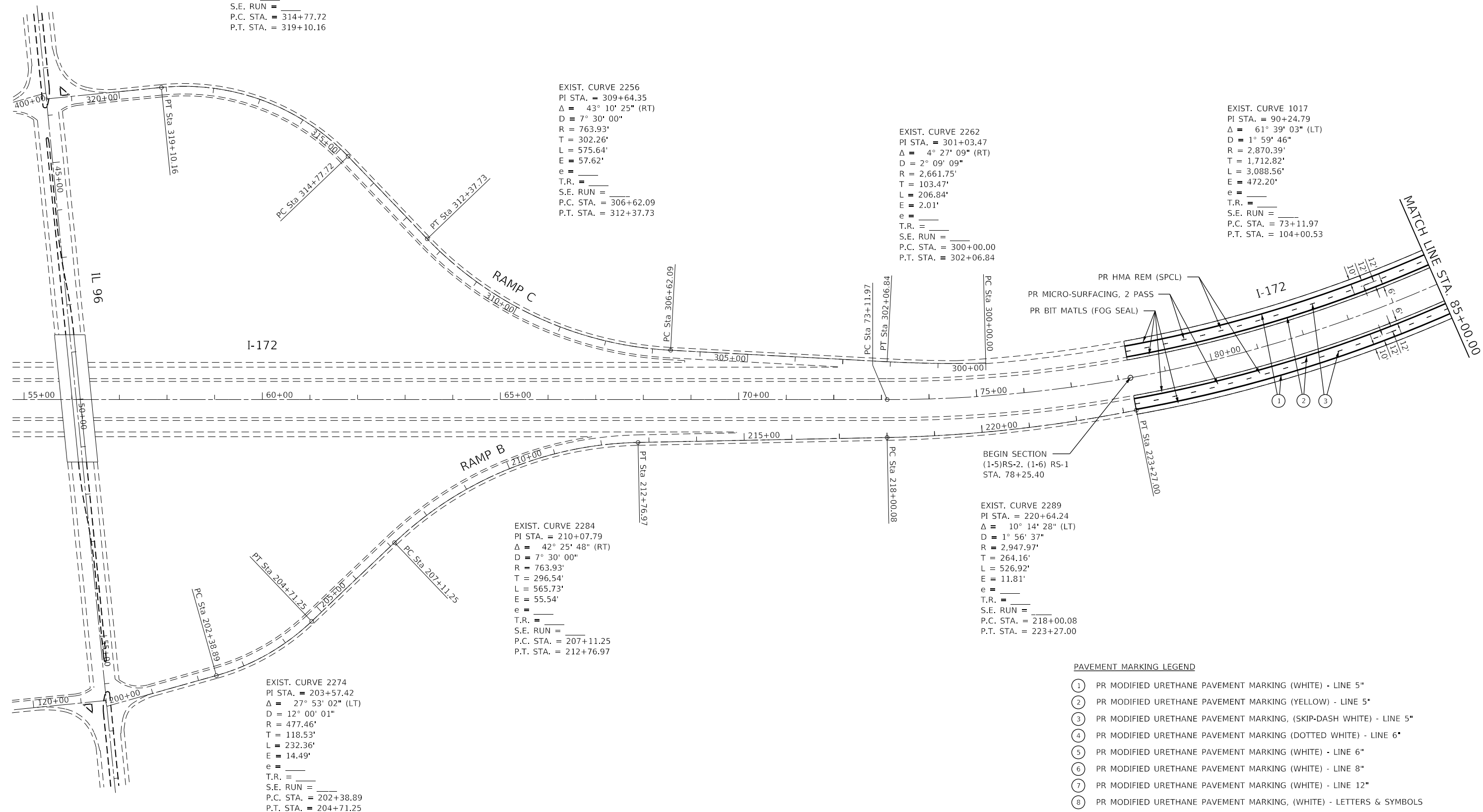
EXIST. CURVE 2274  
 PI STA. = 203+57.42  
 $\Delta = 27^\circ 53' 02''$  (LT)  
 $D = 12^\circ 00' 01''$   
 $R = 477.46'$   
 $T = 118.53'$   
 $L = 232.36'$   
 $E = 14.49'$   
 $e = \text{---}$   
 T.R. =           
 S.E. RUN =           
 P.C. STA. = 202+38.89  
 P.T. STA. = 204+71.25

PR HMA REM (SPCL)  
 PR MICRO-SURFACING, 2 PASS  
 PR BIT MATLS (FOG SEAL)

BEGIN SECTION  
 (1-5)RS-2, (1-6) RS-1  
 STA. 78+25.40

PAVEMENT MARKING LEGEND

- ① PR MODIFIED URETHANE PAVEMENT MARKING (WHITE) - LINE 5"
- ② PR MODIFIED URETHANE PAVEMENT MARKING (YELLOW) - LINE 5"
- ③ PR MODIFIED URETHANE PAVEMENT MARKING, (SKIP-DASH WHITE) - LINE 5"
- ④ PR MODIFIED URETHANE PAVEMENT MARKING (DOTTED WHITE) - LINE 6"
- ⑤ PR MODIFIED URETHANE PAVEMENT MARKING (WHITE) - LINE 6"
- ⑥ PR MODIFIED URETHANE PAVEMENT MARKING (WHITE) - LINE 8"
- ⑦ PR MODIFIED URETHANE PAVEMENT MARKING (WHITE) - LINE 12"
- ⑧ PR MODIFIED URETHANE PAVEMENT MARKING, (WHITE) - LETTERS & SYMBOLS



MODEL: Default  
 FILE: ModelC\_PlanSheet.dwg  
 PROJECT: I-172  
 SHEET: 11 OF 11  
 DATE: 12/11/2020

USER NAME = minderbt	DESIGNED - _____	REVISED - _____
DRAWN - _____	REVISIONS - _____	
PLOT SCALE = 200.0000' / in.	CHECKED - _____	REVISIONS - _____
PLOT DATE = 12/11/2020	DATE - _____	REVISIONS - _____

**STATE OF ILLINOIS  
 DEPARTMENT OF TRANSPORTATION**

**PLAN SHEETS**

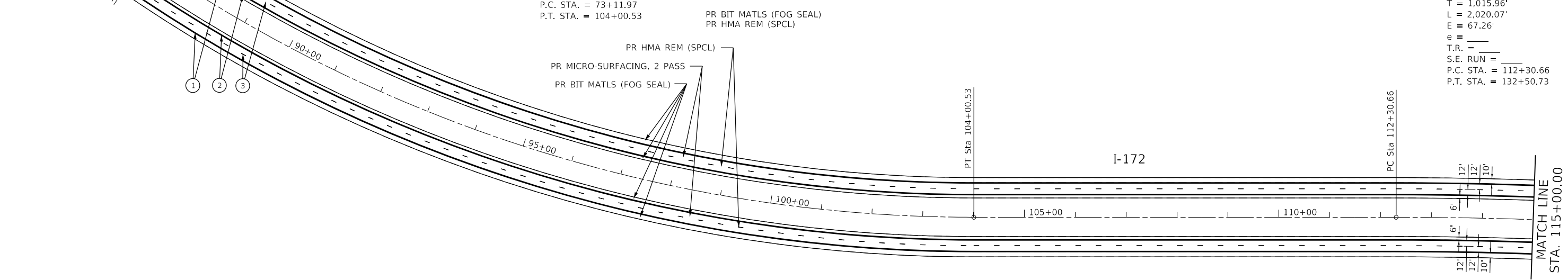
SCALE: 1" = 100'    SHEET 1 OF 11 SHEETS    STA. 66+00.00 TO STA. 85+00.00

F.A.I. RTE.	SECTION	COUNTY	TOTAL SHEETS	SHEET NO.
172	(1-5)RS-2, (1-6)RS-1	ADAMS	21	10
CONTRACT NO. 72L95				
ILLINOIS FED. AID PROJECT				

MATCH LINE STA. 85+00.00

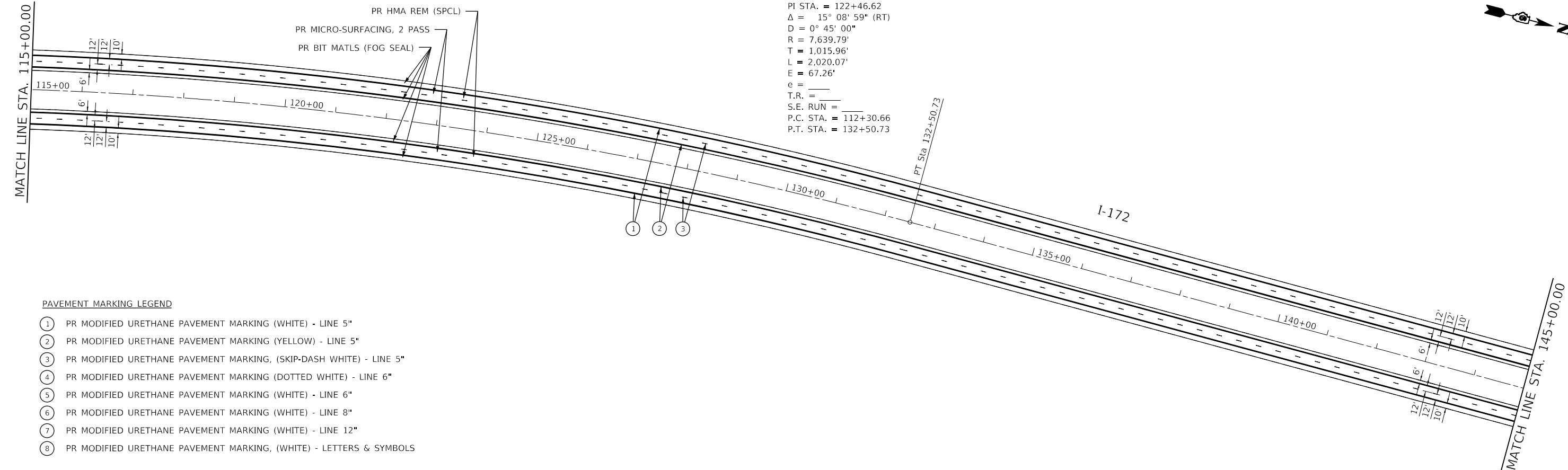
EXIST. CURVE 1017  
 PI STA. = 90+24.79  
 $\Delta = 61^\circ 39' 03''$  (LT)  
 $D = 1^\circ 59' 46''$   
 $R = 2,870.39'$   
 $T = 1,712.82'$   
 $L = 3,088.56'$   
 $E = 472.20'$   
 $e =$   
 T.R. =  
 S.E. RUN =  
 P.C. STA. = 73+11.97  
 P.T. STA. = 104+00.53

EXIST. CURVE 1015  
 PI STA. = 122+46.62  
 $\Delta = 15^\circ 08' 59''$  (RT)  
 $D = 0^\circ 45' 00''$   
 $R = 7,639.79'$   
 $T = 1,015.96'$   
 $L = 2,020.07'$   
 $E = 67.26'$   
 $e =$   
 T.R. =  
 S.E. RUN =  
 P.C. STA. = 112+30.66  
 P.T. STA. = 132+50.73



MATCH LINE STA. 115+00.00

EXIST. CURVE 1015  
 PI STA. = 122+46.62  
 $\Delta = 15^\circ 08' 59''$  (RT)  
 $D = 0^\circ 45' 00''$   
 $R = 7,639.79'$   
 $T = 1,015.96'$   
 $L = 2,020.07'$   
 $E = 67.26'$   
 $e =$   
 T.R. =  
 S.E. RUN =  
 P.C. STA. = 112+30.66  
 P.T. STA. = 132+50.73



**PAVEMENT MARKING LEGEND**

- ① PR MODIFIED URETHANE PAVEMENT MARKING (WHITE) - LINE 5"
- ② PR MODIFIED URETHANE PAVEMENT MARKING (YELLOW) - LINE 5"
- ③ PR MODIFIED URETHANE PAVEMENT MARKING, (SKIP-DASH WHITE) - LINE 5"
- ④ PR MODIFIED URETHANE PAVEMENT MARKING (DOTTED WHITE) - LINE 6"
- ⑤ PR MODIFIED URETHANE PAVEMENT MARKING (WHITE) - LINE 6"
- ⑥ PR MODIFIED URETHANE PAVEMENT MARKING (WHITE) - LINE 8"
- ⑦ PR MODIFIED URETHANE PAVEMENT MARKING (WHITE) - LINE 12"
- ⑧ PR MODIFIED URETHANE PAVEMENT MARKING, (WHITE) - LETTERS & SYMBOLS

USER NAME = minderbt	DESIGNED - _____	REVISED - _____
DRAWN - _____	REVISIONS - _____	REVISIONS - _____
PLOT SCALE = 200.0000' / in.	CHECKED - _____	REVISIONS - _____
PLOT DATE = 12/11/2020	DATE - _____	REVISIONS - _____

**STATE OF ILLINOIS  
 DEPARTMENT OF TRANSPORTATION**

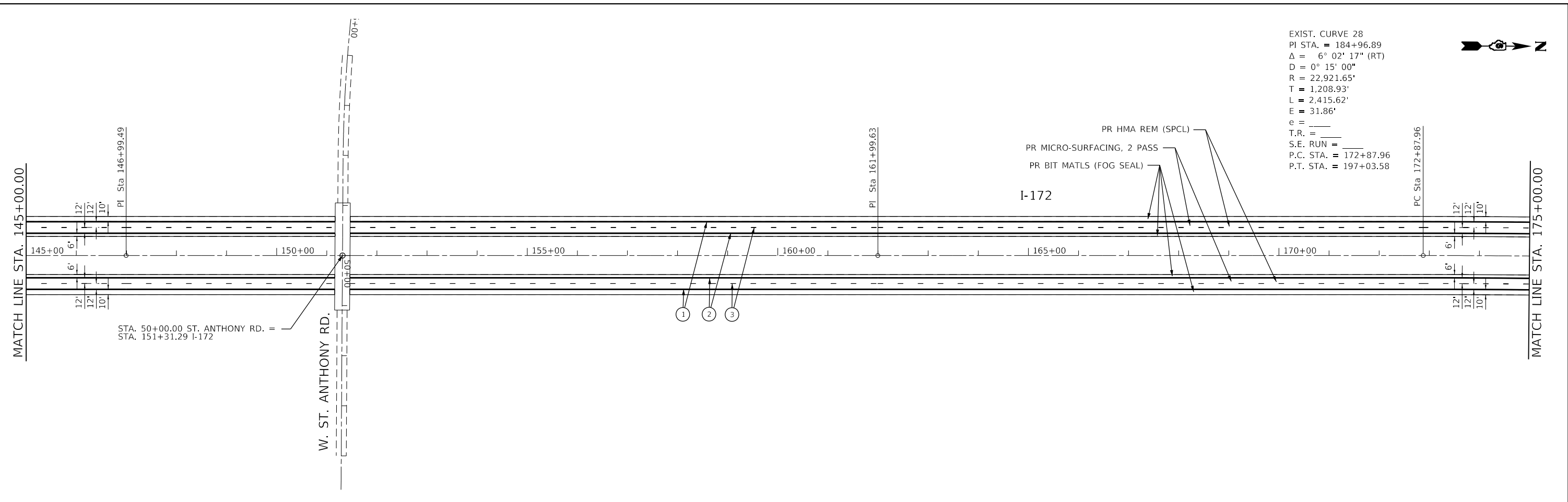
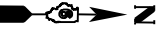
**PLAN SHEETS**

SCALE: 1" = 100' SHEET 2 OF 11 SHEETS STA. 85+00.00 TO STA. 145+00.00

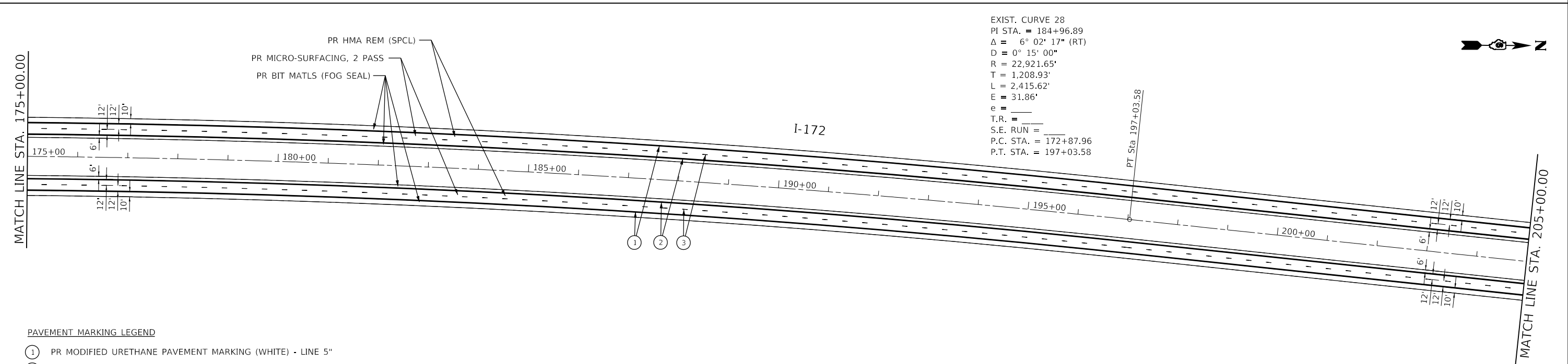
F.A.I. RTE.	SECTION	COUNTY	TOTAL SHEETS	SHEET NO.
172	(1-5)RS-2, (1-6)RS-1	ADAMS	21	11
CONTRACT NO. 72L95				
ILLINOIS FED. AID PROJECT				

MODEL: Default  
 FILE: M:\GIS\_Plan\planroom.dwg  
 PROJECT: 0672195\CADDData\CAD\Sheets\0672195-2-Plan.dwg

EXIST. CURVE 28  
 PI STA. = 184+96.89  
 $\Delta = 6^\circ 02' 17''$  (RT)  
 $D = 0^\circ 15' 00''$   
 $R = 22,921.65'$   
 $T = 1,208.93'$   
 $L = 2,415.62'$   
 $E = 31.86'$   
 $e =$   
 T.R. =  
 S.E. RUN =  
 P.C. STA. = 172+87.96  
 P.T. STA. = 197+03.58



EXIST. CURVE 28  
 PI STA. = 184+96.89  
 $\Delta = 6^\circ 02' 17''$  (RT)  
 $D = 0^\circ 15' 00''$   
 $R = 22,921.65'$   
 $T = 1,208.93'$   
 $L = 2,415.62'$   
 $E = 31.86'$   
 $e =$   
 T.R. =  
 S.E. RUN =  
 P.C. STA. = 172+87.96  
 P.T. STA. = 197+03.58



**PAVEMENT MARKING LEGEND**

- ① PR MODIFIED URETHANE PAVEMENT MARKING (WHITE) - LINE 5"
- ② PR MODIFIED URETHANE PAVEMENT MARKING (YELLOW) - LINE 5"
- ③ PR MODIFIED URETHANE PAVEMENT MARKING, (SKIP-DASH WHITE) - LINE 5"
- ④ PR MODIFIED URETHANE PAVEMENT MARKING (DOTTED WHITE) - LINE 6"
- ⑤ PR MODIFIED URETHANE PAVEMENT MARKING (WHITE) - LINE 6"
- ⑥ PR MODIFIED URETHANE PAVEMENT MARKING (WHITE) - LINE 8"
- ⑦ PR MODIFIED URETHANE PAVEMENT MARKING (WHITE) - LINE 12"
- ⑧ PR MODIFIED URETHANE PAVEMENT MARKING, (WHITE) - LETTERS & SYMBOLS

MODEL: Default  
 FILE: Model: p:\pub\baroncom.dwg  
 PROJECT: 72L95  
 OFFICE: IDOT  
 DATE: 12/11/2020

USER NAME = minderbt	DESIGNED - _____	REVISED - _____
DRAWN - _____	REVISIONS - _____	REVISIONS - _____
PLOT SCALE = 200.0000' / in.	CHECKED - _____	REVISIONS - _____
PLOT DATE = 12/11/2020	DATE - _____	REVISIONS - _____

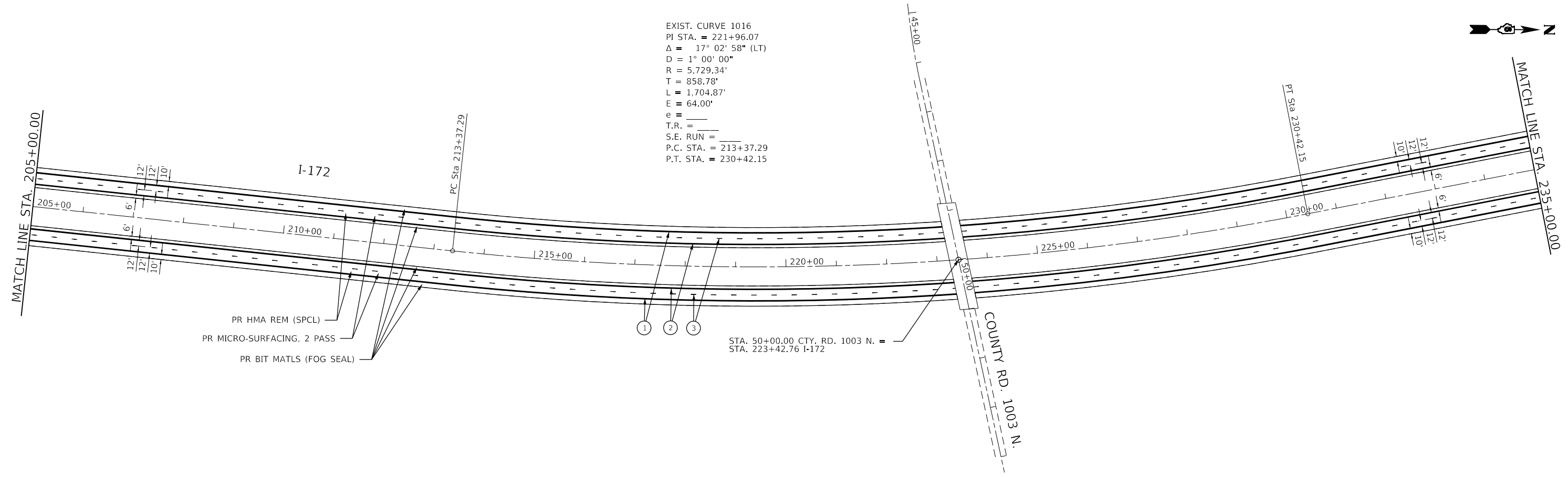
**STATE OF ILLINOIS  
 DEPARTMENT OF TRANSPORTATION**

<b>PLAN SHEETS</b>	
SCALE: 1" = 100'	SHEET 3 OF 11 SHEETS
STA. 145+00.00 TO STA. 205+00.00	

F.A.I. RTE.	SECTION	COUNTY	TOTAL SHEETS	SHEET NO.
172	(1-5)RS-2, (1-6)RS-1	ADAMS	21	12
CONTRACT NO. 72L95				
ILLINOIS FED. AID PROJECT				



EXIST. CURVE 1016  
 PI STA. = 221+96.07  
 $\Delta = 17^\circ 02' 58''$  (LT)  
 $D = 1^\circ 00' 00''$   
 $R = 5,729.34'$   
 $T = 858.78'$   
 $L = 1,704.87'$   
 $E = 64.00'$   
 $e =$   
 $T.R. =$   
 $S.E. RUN =$   
 P.C. STA. = 213+37.29  
 P.T. STA. = 230+42.15



**PAVEMENT MARKING LEGEND**

- ① PR MODIFIED URETHANE PAVEMENT MARKING (WHITE) - LINE 5"
- ② PR MODIFIED URETHANE PAVEMENT MARKING (YELLOW) - LINE 5"
- ③ PR MODIFIED URETHANE PAVEMENT MARKING, (SKIP-DASH WHITE) - LINE 5"
- ④ PR MODIFIED URETHANE PAVEMENT MARKING (DOTTED WHITE) - LINE 6"
- ⑤ PR MODIFIED URETHANE PAVEMENT MARKING (WHITE) - LINE 6"
- ⑥ PR MODIFIED URETHANE PAVEMENT MARKING (WHITE) - LINE 8"
- ⑦ PR MODIFIED URETHANE PAVEMENT MARKING (WHITE) - LINE 12"
- ⑧ PR MODIFIED URETHANE PAVEMENT MARKING, (WHITE) - LETTERS & SYMBOLS

MODEL: Default  
 FILE: h:\mfc\_projects\pavementroom.dwg  
 PROJECT: 0672195\CADD\data\CAD\sheet\0672195-rte-plan.dwg  
 OFFICE: D:\mfc\_projects\pavementroom.dwg  
 DATE: 12/11/2020

USER NAME = minderbt	DESIGNED - _____	REVISED - _____
PLOT SCALE = 200.0000' / in.	DRAWN - _____	REVISED - _____
PLOT DATE = 12/11/2020	CHECKED - _____	REVISED - _____
	DATE - _____	REVISED - _____

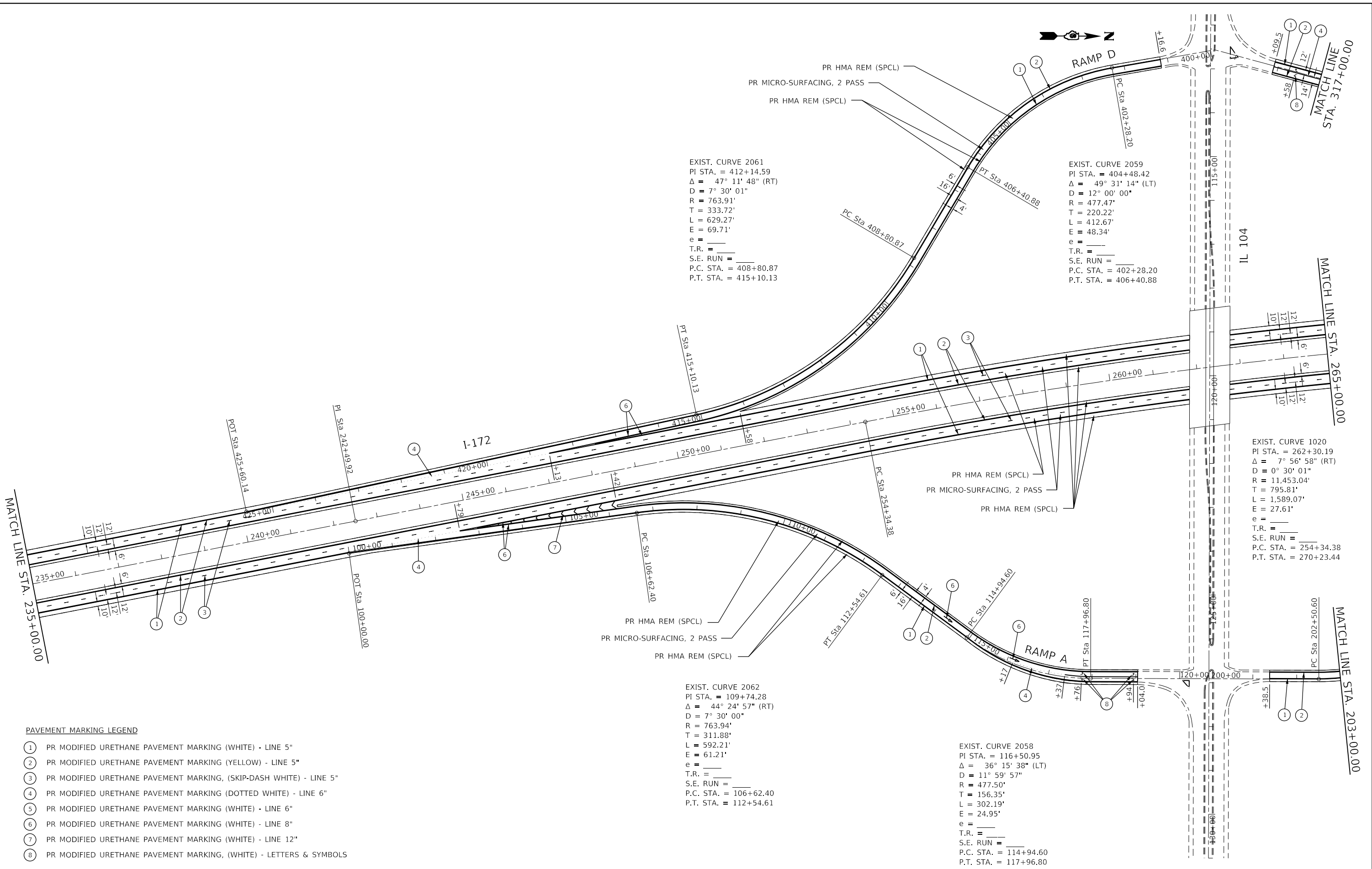
**STATE OF ILLINOIS  
 DEPARTMENT OF TRANSPORTATION**

**PLAN SHEETS**

SCALE: 1" = 100' SHEET 4 OF 11 SHEETS STA. 205+00.00 TO STA. 265+00.00

F.A.I. RTE.	SECTION	COUNTY	TOTAL SHEETS	SHEET NO.
172	(1-5)RS-2, (1-6)RS-1	ADAMS	21	13
CONTRACT NO. 72L95			ILLINOIS FED. AID PROJECT	

MODEL: Default  
 FILE: 72L95\_PlanSheets.dwg  
 PROJECT: 72L95  
 OFFICE: JGD  
 DATE: 12/11/2020



EXIST. CURVE 2061  
 PI STA. = 412+14.59  
 $\Delta = 47^\circ 11' 48''$  (RT)  
 $D = 7^\circ 30' 01''$   
 $R = 763.91'$   
 $T = 333.72'$   
 $L = 629.27'$   
 $E = 69.71'$   
 $e =$   
 T.R. =  
 S.E. RUN =  
 P.C. STA. = 408+80.87  
 P.T. STA. = 415+10.13

EXIST. CURVE 2059  
 PI STA. = 404+48.42  
 $\Delta = 49^\circ 31' 14''$  (LT)  
 $D = 12^\circ 00' 00''$   
 $R = 477.47'$   
 $T = 220.22'$   
 $L = 412.67'$   
 $E = 48.34'$   
 $e =$   
 T.R. =  
 S.E. RUN =  
 P.C. STA. = 402+28.20  
 P.T. STA. = 406+40.88

EXIST. CURVE 1020  
 PI STA. = 262+30.19  
 $\Delta = 7^\circ 56' 58''$  (RT)  
 $D = 0^\circ 30' 01''$   
 $R = 11,453.04'$   
 $T = 795.81'$   
 $L = 1,589.07'$   
 $E = 27.61'$   
 $e =$   
 T.R. =  
 S.E. RUN =  
 P.C. STA. = 254+34.38  
 P.T. STA. = 270+23.44

EXIST. CURVE 2062  
 PI STA. = 109+74.28  
 $\Delta = 44^\circ 24' 57''$  (RT)  
 $D = 7^\circ 30' 00''$   
 $R = 763.94'$   
 $T = 311.88'$   
 $L = 592.21'$   
 $E = 61.21'$   
 $e =$   
 T.R. =  
 S.E. RUN =  
 P.C. STA. = 106+62.40  
 P.T. STA. = 112+54.61

EXIST. CURVE 2058  
 PI STA. = 116+50.95  
 $\Delta = 36^\circ 15' 38''$  (LT)  
 $D = 11^\circ 59' 57''$   
 $R = 477.50'$   
 $T = 156.35'$   
 $L = 302.19'$   
 $E = 24.95'$   
 $e =$   
 T.R. =  
 S.E. RUN =  
 P.C. STA. = 114+94.60  
 P.T. STA. = 117+96.80

**PAVEMENT MARKING LEGEND**

- ① PR MODIFIED URETHANE PAVEMENT MARKING (WHITE) - LINE 5"
- ② PR MODIFIED URETHANE PAVEMENT MARKING (YELLOW) - LINE 5"
- ③ PR MODIFIED URETHANE PAVEMENT MARKING, (SKIP-DASH WHITE) - LINE 5"
- ④ PR MODIFIED URETHANE PAVEMENT MARKING (DOTTED WHITE) - LINE 6"
- ⑤ PR MODIFIED URETHANE PAVEMENT MARKING (WHITE) - LINE 6"
- ⑥ PR MODIFIED URETHANE PAVEMENT MARKING (WHITE) - LINE 8"
- ⑦ PR MODIFIED URETHANE PAVEMENT MARKING (WHITE) - LINE 12"
- ⑧ PR MODIFIED URETHANE PAVEMENT MARKING, (WHITE) - LETTERS & SYMBOLS

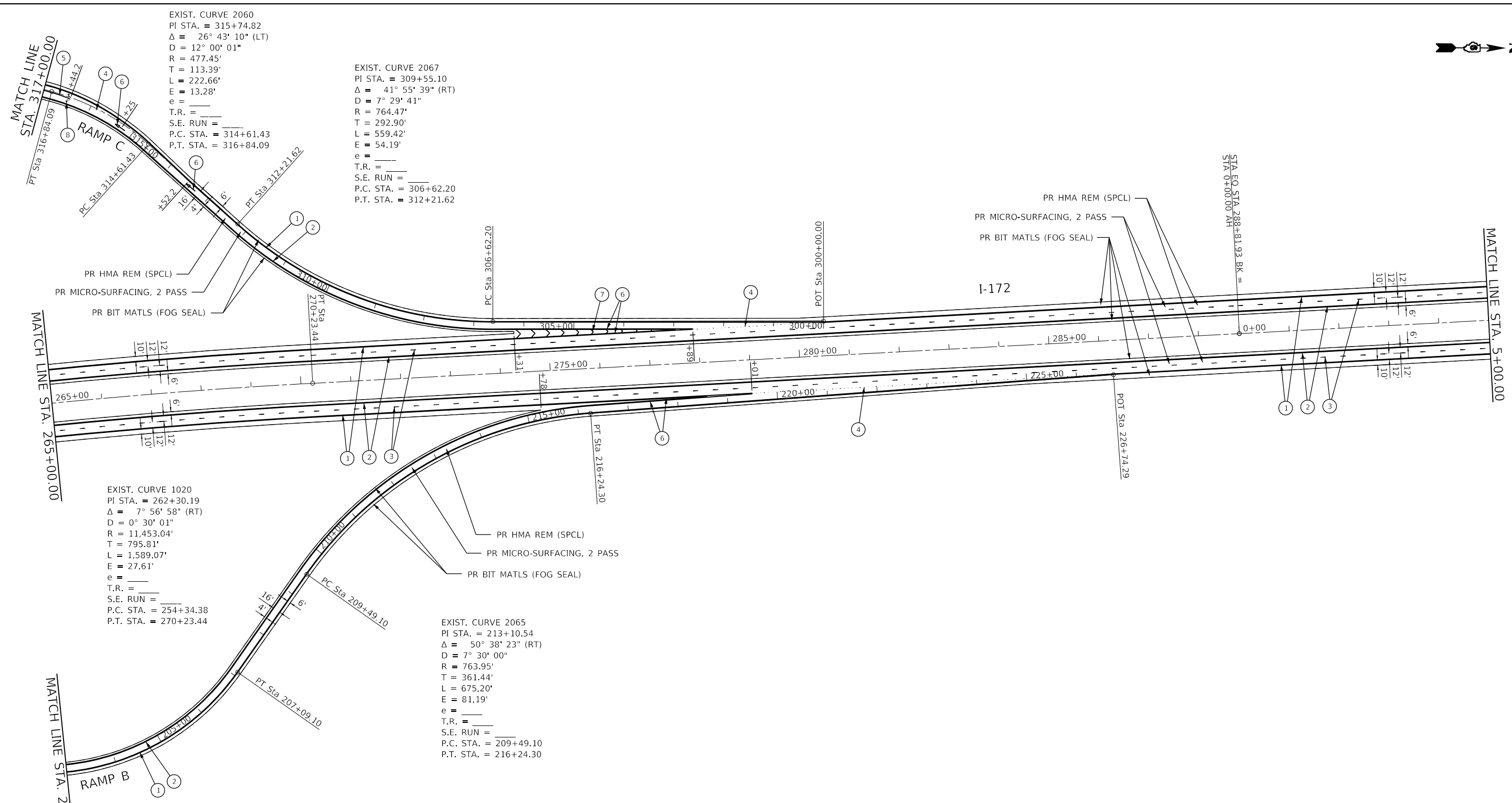
USER NAME = minderbt	DESIGNED - _____	REVISED - _____
DRAWN - _____	REVISIONS - _____	
PLOT SCALE = 200.0000' / in.	CHECKED - _____	REVISIONS - _____
PLOT DATE = 12/11/2020	DATE - _____	REVISIONS - _____

**STATE OF ILLINOIS  
 DEPARTMENT OF TRANSPORTATION**

**PLAN SHEETS**

SCALE: 1" = 100' SHEET 5 OF 11 SHEETS STA. 235+00.00 TO STA. 265+00.00

F.A.I. RTE.	SECTION	COUNTY	TOTAL SHEETS	SHEET NO.
172	(1-5)RS-2, (1-6)RS-1	ADAMS	21	14
CONTRACT NO. 72L95				
ILLINOIS FED. AID PROJECT				



EXIST. CURVE 2060  
 PI STA. = 315+74.82  
 $\Delta = 26^\circ 43' 10''$  (LT)  
 $D = 12^\circ 00' 01''$   
 $R = 477.45'$   
 $T = 113.39'$   
 $L = 222.66'$   
 $E = 13.28'$   
 $e =$   
 $T.R. =$   
 $S.E. RUN =$   
 $P.C. STA. = 314+61.43$   
 $P.T. STA. = 316+84.09$

EXIST. CURVE 2067  
 PI STA. = 309+55.10  
 $\Delta = 41^\circ 55' 39''$  (RT)  
 $D = 7^\circ 29' 41''$   
 $R = 764.47'$   
 $T = 292.90'$   
 $L = 559.42'$   
 $E = 54.19'$   
 $e =$   
 $T.R. =$   
 $S.E. RUN =$   
 $P.C. STA. = 306+62.20$   
 $P.T. STA. = 312+21.62$

EXIST. CURVE 1020  
 PI STA. = 262+30.19  
 $\Delta = 7^\circ 56' 58''$  (RT)  
 $D = 0^\circ 30' 01''$   
 $R = 11,453.04'$   
 $T = 795.81'$   
 $L = 1,589.07'$   
 $E = 27.61'$   
 $e =$   
 $T.R. =$   
 $S.E. RUN =$   
 $P.C. STA. = 254+34.38$   
 $P.T. STA. = 270+23.44$

EXIST. CURVE 2065  
 PI STA. = 213+10.54  
 $\Delta = 50^\circ 38' 23''$  (RT)  
 $D = 7^\circ 30' 00''$   
 $R = 763.95'$   
 $T = 361.44'$   
 $L = 675.20'$   
 $E = 81.19'$   
 $e =$   
 $T.R. =$   
 $S.E. RUN =$   
 $P.C. STA. = 209+49.10$   
 $P.T. STA. = 216+24.30$

EXIST. CURVE 2057  
 PI STA. = 204+99.26  
 $\Delta = 55^\circ 01' 14''$  (LT)  
 $D = 12^\circ 00' 00''$   
 $R = 477.46'$   
 $T = 248.66'$   
 $L = 458.50'$   
 $E = 60.87'$   
 $e =$   
 $T.R. =$   
 $S.E. RUN =$   
 $P.C. STA. = 202+50.60$   
 $P.T. STA. = 207+09.10$

PAVEMENT MARKING LEGEND

- ① PR MODIFIED URETHANE PAVEMENT MARKING (WHITE) - LINE 5"
- ② PR MODIFIED URETHANE PAVEMENT MARKING (YELLOW) - LINE 5"
- ③ PR MODIFIED URETHANE PAVEMENT MARKING, (SKIP-DASH WHITE) - LINE 5"
- ④ PR MODIFIED URETHANE PAVEMENT MARKING (DOTTED WHITE) - LINE 6"
- ⑤ PR MODIFIED URETHANE PAVEMENT MARKING (WHITE) - LINE 6"
- ⑥ PR MODIFIED URETHANE PAVEMENT MARKING (WHITE) - LINE 8"
- ⑦ PR MODIFIED URETHANE PAVEMENT MARKING (WHITE) - LINE 12"
- ⑧ PR MODIFIED URETHANE PAVEMENT MARKING, (WHITE) - LETTERS & SYMBOLS

MODEL: Default  
 FILE: Mainfile - I-172-Ramp-2020.dwg  
 PROJECT: I-172-Ramp-2020.dwg  
 OFFICE: I-172-Ramp-2020.dwg  
 DATE: 12/11/2020

USER NAME = mindert	DESIGNED - _____	REVISED - _____
PLOT SCALE = 200.0000' / in.	CHECKED - _____	REVISED - _____
PLOT DATE = 12/11/2020	DATE - _____	REVISED - _____

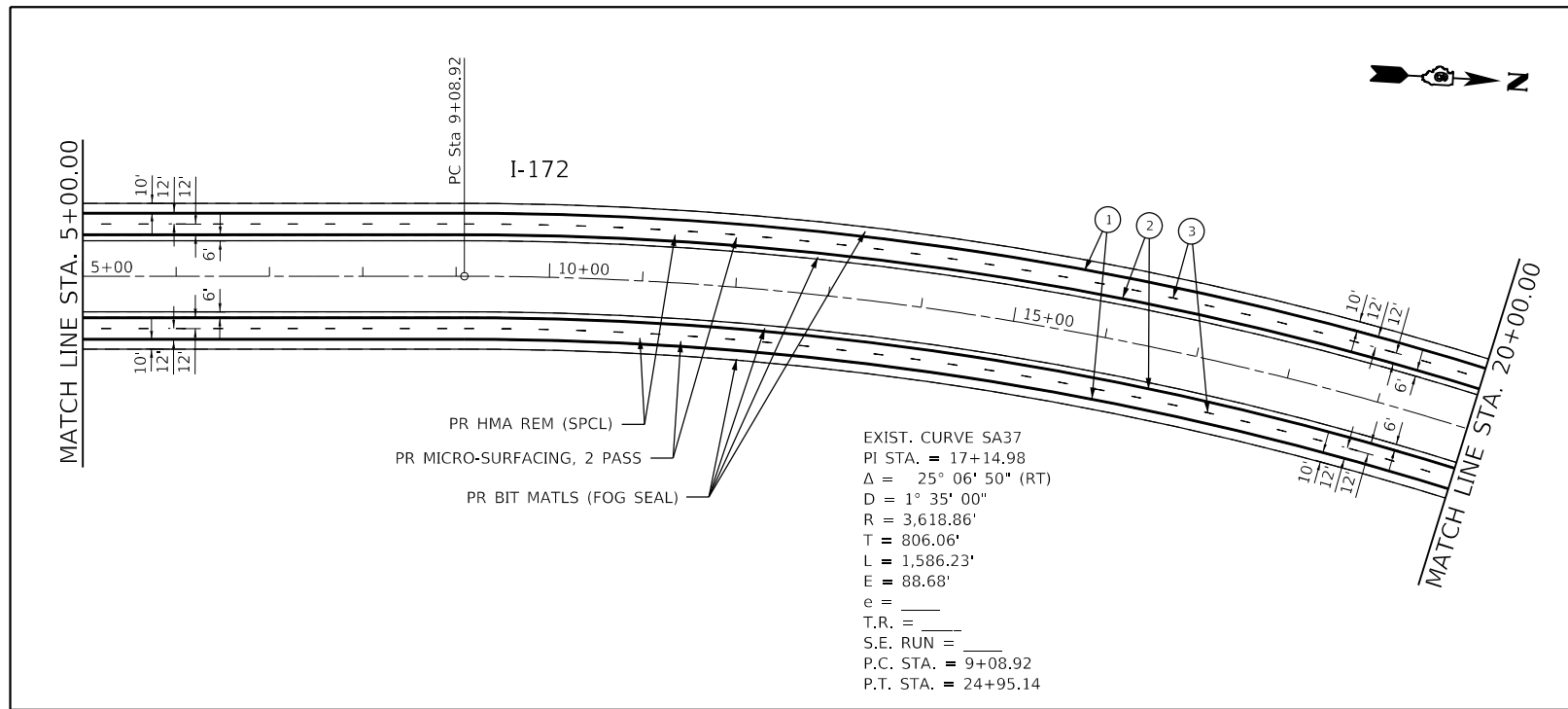
**STATE OF ILLINOIS  
 DEPARTMENT OF TRANSPORTATION**

**PLAN SHEETS**

SCALE: 1" = 100'    SHEET 6 OF 11 SHEETS    STA. 265+00.00 TO STA. 5+00.00

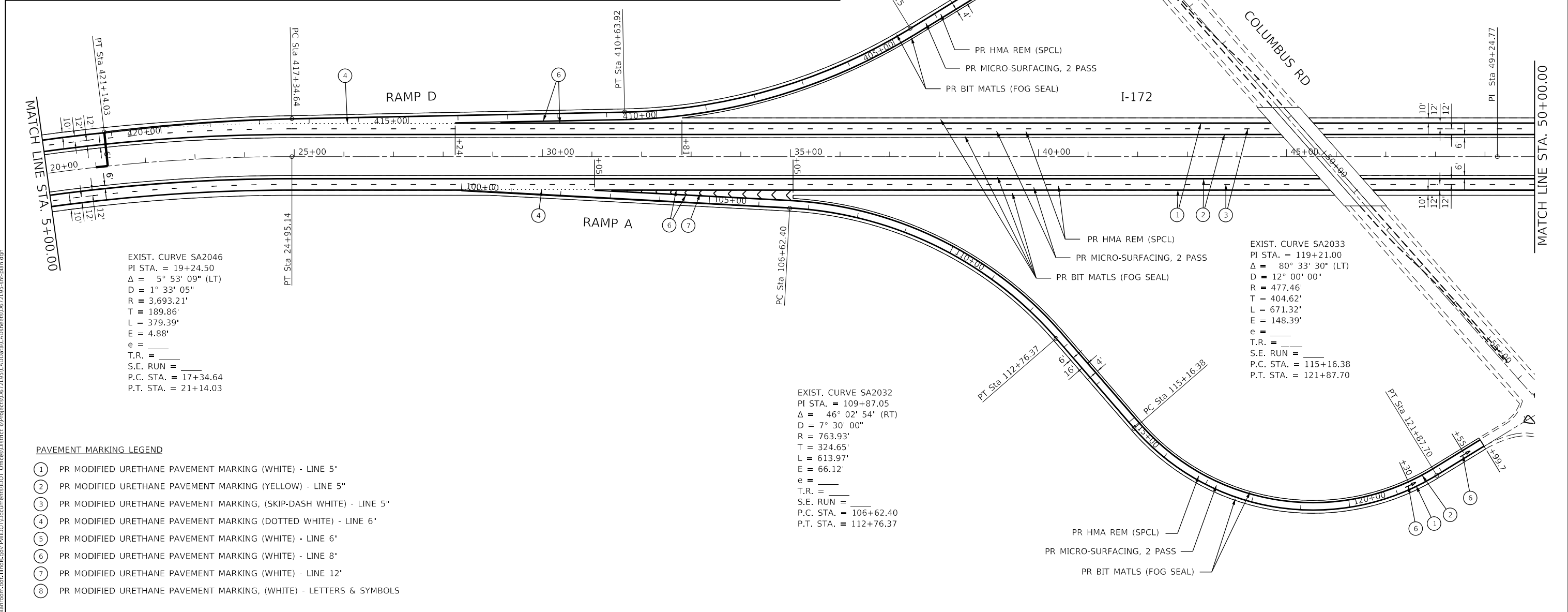
F.A.I. RTE.	SECTION	COUNTY	TOTAL SHEETS	SHEET NO.
172	(1-5)RS-2, (1-6)RS-1	ADAMS	21	15
CONTRACT NO. 72L95				
ILLINOIS FED. AID PROJECT				

MODEL: Default  
 FILE: \\hpc-pub\pub\rooms\ad\allink\gpc\PROJECTS\DOT\Documents\DOT\Office\Drawings\6\Projects\0672195\CADD\DATA\CAD\Sheets\0672195-rh-plan.dwg



EXIST. CURVE SA2045  
 PI STA. = 407+67.83  
 $\Delta = 30^\circ 20' 22''$  (RT)  
 D = 5° 00' 01"  
 R = 1,145.88'  
 T = 310.68'  
 L = 606.77'  
 E = 41.37'  
 e = \_\_\_\_\_  
 T.R. = \_\_\_\_\_  
 S.E. RUN = \_\_\_\_\_  
 P.C. STA. = 404+57.15  
 P.T. STA. = 410+63.92

EXIST. CURVE SA2042  
 PI STA. = 18+54.86  
 $\Delta = 73^\circ 58' 24''$  (LT)  
 D = 12° 00' 00"  
 R = 477.46'  
 T = 359.62'  
 L = 616.44'  
 E = 120.28'  
 e = \_\_\_\_\_  
 T.R. = \_\_\_\_\_  
 S.E. RUN = \_\_\_\_\_  
 P.C. STA. = 14+95.24  
 P.T. STA. = 21+11.68



EXIST. CURVE SA2046  
 PI STA. = 19+24.50  
 $\Delta = 5^\circ 53' 09''$  (LT)  
 D = 1° 33' 05"  
 R = 3,693.21'  
 T = 189.86'  
 L = 379.39'  
 E = 4.88'  
 e = \_\_\_\_\_  
 T.R. = \_\_\_\_\_  
 S.E. RUN = \_\_\_\_\_  
 P.C. STA. = 17+34.64  
 P.T. STA. = 21+14.03

EXIST. CURVE SA2032  
 PI STA. = 109+87.05  
 $\Delta = 46^\circ 02' 54''$  (RT)  
 D = 7° 30' 00"  
 R = 763.93'  
 T = 324.65'  
 L = 613.97'  
 E = 66.12'  
 e = \_\_\_\_\_  
 T.R. = \_\_\_\_\_  
 S.E. RUN = \_\_\_\_\_  
 P.C. STA. = 106+62.40  
 P.T. STA. = 112+76.37

EXIST. CURVE SA2033  
 PI STA. = 119+21.00  
 $\Delta = 80^\circ 33' 30''$  (LT)  
 D = 12° 00' 00"  
 R = 477.46'  
 T = 404.62'  
 L = 671.32'  
 E = 148.39'  
 e = \_\_\_\_\_  
 T.R. = \_\_\_\_\_  
 S.E. RUN = \_\_\_\_\_  
 P.C. STA. = 115+16.38  
 P.T. STA. = 121+87.70

- PAVEMENT MARKING LEGEND**
- ① PR MODIFIED URETHANE PAVEMENT MARKING (WHITE) - LINE 5"
  - ② PR MODIFIED URETHANE PAVEMENT MARKING (YELLOW) - LINE 5"
  - ③ PR MODIFIED URETHANE PAVEMENT MARKING, (SKIP-DASH WHITE) - LINE 5"
  - ④ PR MODIFIED URETHANE PAVEMENT MARKING (DOTTED WHITE) - LINE 6"
  - ⑤ PR MODIFIED URETHANE PAVEMENT MARKING (WHITE) - LINE 6"
  - ⑥ PR MODIFIED URETHANE PAVEMENT MARKING (WHITE) - LINE 8"
  - ⑦ PR MODIFIED URETHANE PAVEMENT MARKING (WHITE) - LINE 12"
  - ⑧ PR MODIFIED URETHANE PAVEMENT MARKING, (WHITE) - LETTERS & SYMBOLS

USER NAME = minderbt	DESIGNED - _____	REVISED - _____
DRAWN - _____	REVISOR - _____	
PLOT SCALE = 200,0000' / in.	CHECKED - _____	REVISOR - _____
PLOT DATE = 12/11/2020	DATE - _____	REVISOR - _____

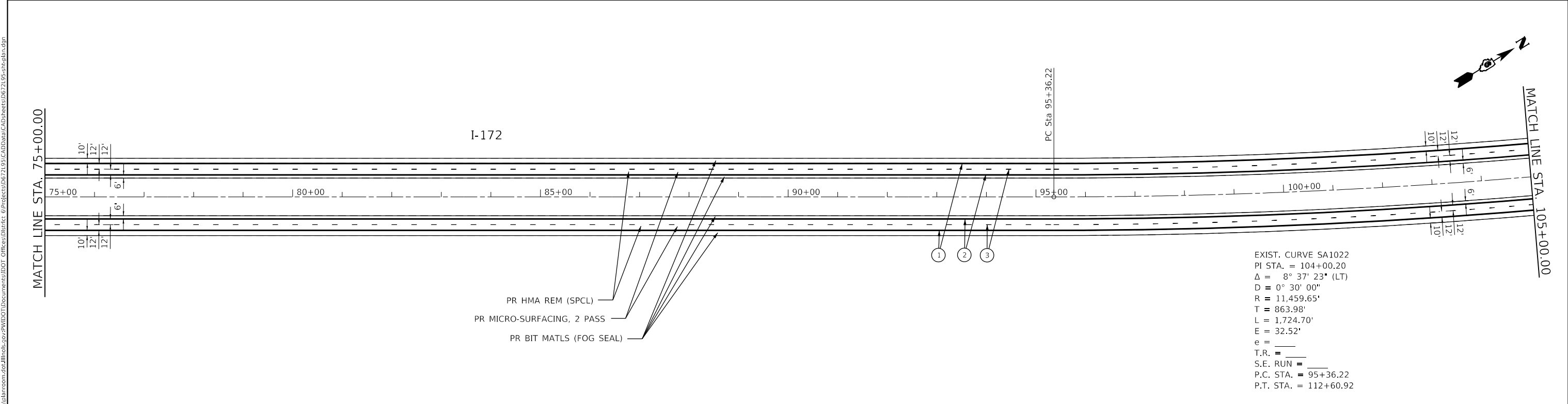
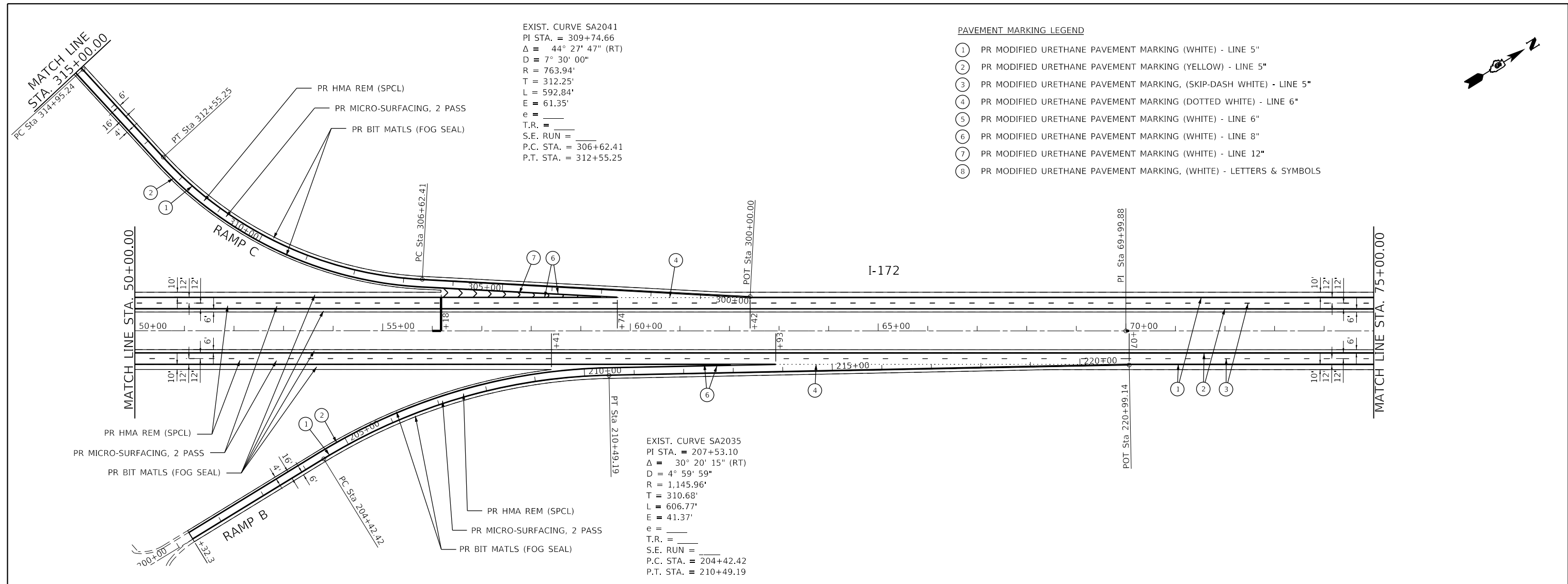
**STATE OF ILLINOIS  
 DEPARTMENT OF TRANSPORTATION**

<b>PLAN SHEETS</b>			
SCALE: 1" = 100'	SHEET 7	OF 11 SHEETS	STA. 5+00.00 TO STA. 50+00.00

F.A.I. RTE.	SECTION	COUNTY	TOTAL SHEETS	SHEET NO.
172	(1-5)RS-2, (1-6)RS-1	ADAMS	21	16
CONTRACT NO. 72L95				
ILLINOIS FED. AID PROJECT				



MODEL: Default  
 FILE: \\mtrc-pw01\planroom\dat\illinois\pwr\PROJECTS\DOT\Documents\DOT - Offices\Director - Projects\0672195\CADD\data\CAD\sheet\0672195-rtb-plan.dgn



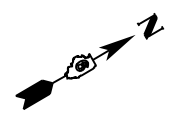
USER NAME = minderbt	DESIGNED - _____	REVISED - _____
DRAWN - _____	REVISOR - _____	REVISOR - _____
PLOT SCALE = 200.0000' / in.	CHECKED - _____	REVISOR - _____
PLOT DATE = 12/11/2020	DATE - _____	REVISOR - _____

**STATE OF ILLINOIS  
 DEPARTMENT OF TRANSPORTATION**

SCALE: 1" = 100'		SHEET 8 OF 11 SHEETS	STA. 50+00.00 TO STA. 105+00.00
------------------	--	----------------------	---------------------------------

F.A.I. RTE.	SECTION	COUNTY	TOTAL SHEETS	SHEET NO.
172	(1-5)RS-2, (1-6)RS-1	ADAMS	21	17
CONTRACT NO. 72L95				
ILLINOIS FED. AID PROJECT				

EXIST. CURVE SA1022  
 PI STA. = 104+00.20  
 $\Delta = 8^\circ 37' 23''$  (LT)  
 $D = 0^\circ 30' 00''$   
 $R = 11,459.65'$   
 $T = 863.98'$   
 $L = 1,724.70'$   
 $E = 32.52'$   
 $e =$   
 $T.R. =$   
 $S.E. RUN =$   
 $P.C. STA. = 95+36.22$   
 $P.T. STA. = 112+60.92$



MATCH LINE STA. 105+00.00

MATCH LINE STA. 135+00.00

I-172

PAVEMENT MARKING LEGEND

- ① PR MODIFIED URETHANE PAVEMENT MARKING (WHITE) - LINE 5"
- ② PR MODIFIED URETHANE PAVEMENT MARKING (YELLOW) - LINE 5"
- ③ PR MODIFIED URETHANE PAVEMENT MARKING, (SKIP-DASH WHITE) - LINE 5"
- ④ PR MODIFIED URETHANE PAVEMENT MARKING (DOTTED WHITE) - LINE 6"
- ⑤ PR MODIFIED URETHANE PAVEMENT MARKING (WHITE) - LINE 6"
- ⑥ PR MODIFIED URETHANE PAVEMENT MARKING (WHITE) - LINE 8"
- ⑦ PR MODIFIED URETHANE PAVEMENT MARKING (WHITE) - LINE 12"
- ⑧ PR MODIFIED URETHANE PAVEMENT MARKING, (WHITE) - LETTERS & SYMBOLS

- PR HMA REM (SPCL)
- PR MICRO-SURFACING, 2 PASS
- PR BIT MATLS (FOG SEAL)

MATCH LINE STA. 135+00.00

MATCH LINE STA. 165+00.00

I-172

ELLINGTON RD  
 STA. 128+00 TO STA. 125+00

BRIDGE OMISSION SB  
 STA. 159+21 TO STA. 162+03

BRIDGE OMISSION NB  
 STA. 160+87 TO STA. 163+69

- PR HMA REM (SPCL)
- PR MICRO-SURFACING, 2 PASS
- PR BIT MATLS (FOG SEAL)

MODEL: Default  
 FILE: h:\mfc\_p\pubplanroom.d\at\illinois.gov\PI\DOT\Documents\IBDOT\_Offices\IBDOT\_CADD\DATA\CADD\Sheet\0672195-shb-plan.dgn

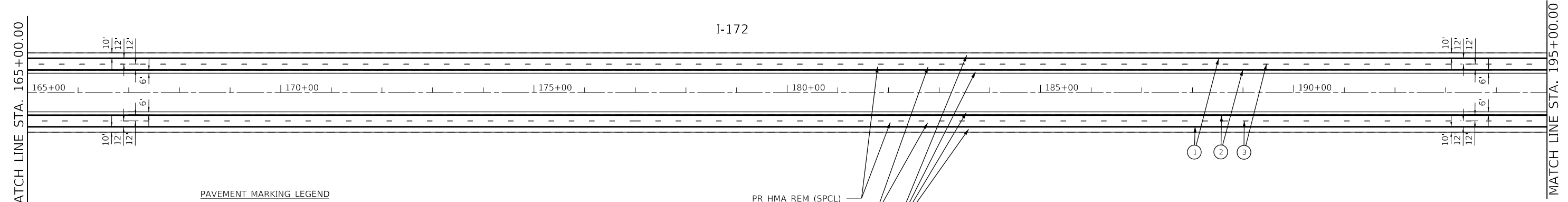
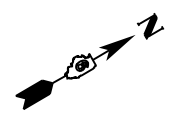
USER NAME = minderbt	DESIGNED - _____	REVISED - _____
	DRAWN - _____	REVISED - _____
PLOT SCALE = 200,0000' / in.	CHECKED - _____	REVISED - _____
PLOT DATE = 12/11/2020	DATE - _____	REVISED - _____

STATE OF ILLINOIS  
 DEPARTMENT OF TRANSPORTATION

PLAN SHEETS

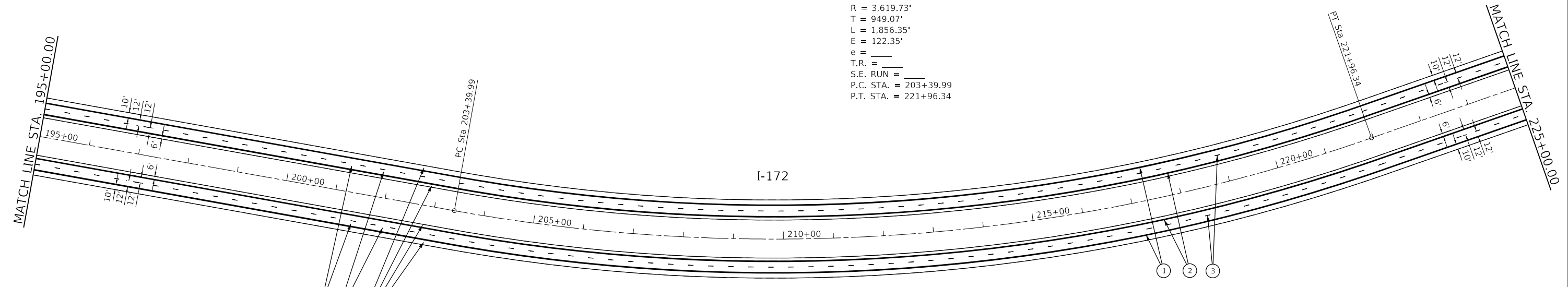
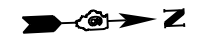
SCALE: 1" = 100' SHEET 9 OF 11 SHEETS STA. 105+00.00 TO STA. 165+00.00

F.A.I. RTE.	SECTION	COUNTY	TOTAL SHEETS	SHEET NO.
172	(1-5)RS-2, (1-6)RS-1	ADAMS	21	18
CONTRACT NO. 72L95				
ILLINOIS FED. AID PROJECT				



- PAVEMENT MARKING LEGEND**
- ① PR MODIFIED URETHANE PAVEMENT MARKING (WHITE) - LINE 5"
  - ② PR MODIFIED URETHANE PAVEMENT MARKING (YELLOW) - LINE 5"
  - ③ PR MODIFIED URETHANE PAVEMENT MARKING, (SKIP-DASH WHITE) - LINE 5"
  - ④ PR MODIFIED URETHANE PAVEMENT MARKING (DOTTED WHITE) - LINE 6"
  - ⑤ PR MODIFIED URETHANE PAVEMENT MARKING (WHITE) - LINE 6"
  - ⑥ PR MODIFIED URETHANE PAVEMENT MARKING (WHITE) - LINE 8"
  - ⑦ PR MODIFIED URETHANE PAVEMENT MARKING (WHITE) - LINE 12"
  - ⑧ PR MODIFIED URETHANE PAVEMENT MARKING, (WHITE) - LETTERS & SYMBOLS

- PR HMA REM (SPCL)
- PR MICRO-SURFACING, 2 PASS
- PR BIT MATLS (FOG SEAL)



EXIST. CURVE SA1023  
 PI STA. = 212+89.06  
 $\Delta = 29^\circ 23' 02''$  (LT)  
 $D = 1^\circ 34' 58''$   
 $R = 3,619.73'$   
 $T = 949.07'$   
 $L = 1,856.35'$   
 $E = 122.35'$   
 $e =$   
 $T.R. =$   
 $S.E. RUN =$   
 P.C. STA. = 203+39.99  
 P.T. STA. = 221+96.34

- PR HMA REM (SPCL)
- PR MICRO-SURFACING, 2 PASS
- PR BIT MATLS (FOG SEAL)

MODEL: Default  
 FILE: h:\mfc\_p\pub\barroom.dwg  
 PROJECT: 0672195\CADD\barroom\CAD\barroom.dwg  
 OFFICE: 0672195\CADD\barroom\CAD\barroom.dwg  
 DATE: 12/11/2020

USER NAME = minderbt	DESIGNED - _____	REVISED - _____
DRAWN - _____	REVISOR - _____	REVISOR - _____
PLOT SCALE = 200.0000' / in.	CHECKED - _____	REVISOR - _____
PLOT DATE = 12/11/2020	DATE - _____	REVISOR - _____

**STATE OF ILLINOIS  
 DEPARTMENT OF TRANSPORTATION**

**PLAN SHEETS**

SCALE: 1" = 100'    SHEET 10    OF 11 SHEETS    STA. 165+00.00    TO STA. 225+00.00

F.A.I. RTE.	SECTION	COUNTY	TOTAL SHEETS	SHEET NO.
172	(1-5)RS-2, (1-6)RS-1	ADAMS	21	19
CONTRACT NO. 72L95				
ILLINOIS FED. AID PROJECT				



EXIST. CURVE SA2011  
 PI STA. = 404+70.46  
 $\Delta = 46^\circ 28' 50''$  (LT)  
 $D = 9^\circ 32' 59''$   
 $R = 599.98'$   
 $T = 257.65'$   
 $L = 486.72'$   
 $E = 52.98'$   
 $e =$   
 T.R. =  
 S.E. RUN =  
 P.C. STA. = 402+12.81  
 P.T. STA. = 406+99.54

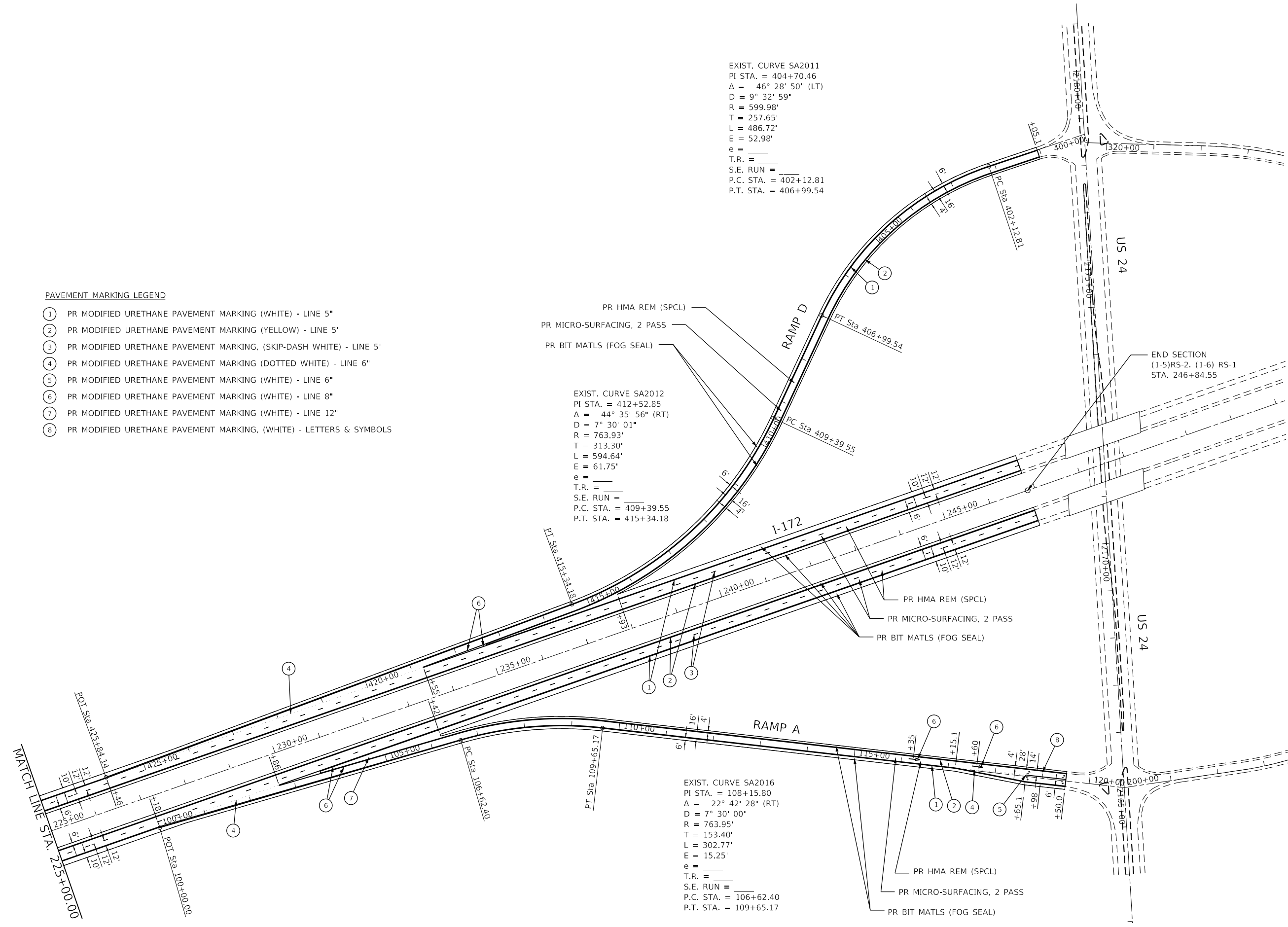
**PAVEMENT MARKING LEGEND**

- ① PR MODIFIED URETHANE PAVEMENT MARKING (WHITE) - LINE 5"
- ② PR MODIFIED URETHANE PAVEMENT MARKING (YELLOW) - LINE 5"
- ③ PR MODIFIED URETHANE PAVEMENT MARKING, (SKIP-DASH WHITE) - LINE 5"
- ④ PR MODIFIED URETHANE PAVEMENT MARKING (DOTTED WHITE) - LINE 6"
- ⑤ PR MODIFIED URETHANE PAVEMENT MARKING (WHITE) - LINE 6"
- ⑥ PR MODIFIED URETHANE PAVEMENT MARKING (WHITE) - LINE 8"
- ⑦ PR MODIFIED URETHANE PAVEMENT MARKING (WHITE) - LINE 12"
- ⑧ PR MODIFIED URETHANE PAVEMENT MARKING, (WHITE) - LETTERS & SYMBOLS

- PR HMA REM (SPCL)
- PR MICRO-SURFACING, 2 PASS
- PR BIT MATLS (FOG SEAL)

EXIST. CURVE SA2012  
 PI STA. = 412+52.85  
 $\Delta = 44^\circ 35' 56''$  (RT)  
 $D = 7^\circ 30' 01''$   
 $R = 763.93'$   
 $T = 313.30'$   
 $L = 594.64'$   
 $E = 61.75'$   
 $e =$   
 T.R. =  
 S.E. RUN =  
 P.C. STA. = 409+39.55  
 P.T. STA. = 415+34.18

EXIST. CURVE SA2016  
 PI STA. = 108+15.80  
 $\Delta = 22^\circ 42' 28''$  (RT)  
 $D = 7^\circ 30' 00''$   
 $R = 763.95'$   
 $T = 153.40'$   
 $L = 302.77'$   
 $E = 15.25'$   
 $e =$   
 T.R. =  
 S.E. RUN =  
 P.C. STA. = 106+62.40  
 P.T. STA. = 109+65.17



MODEL: Default  
 FILE: \\nrcs-prod\pub\aroom.dwg  
 PROJECT: \\nrcs-prod\pub\aroom.dwg  
 OFFICE: \\nrcs-prod\pub\aroom.dwg  
 SHEETS: 0672195-sh11b.dwg

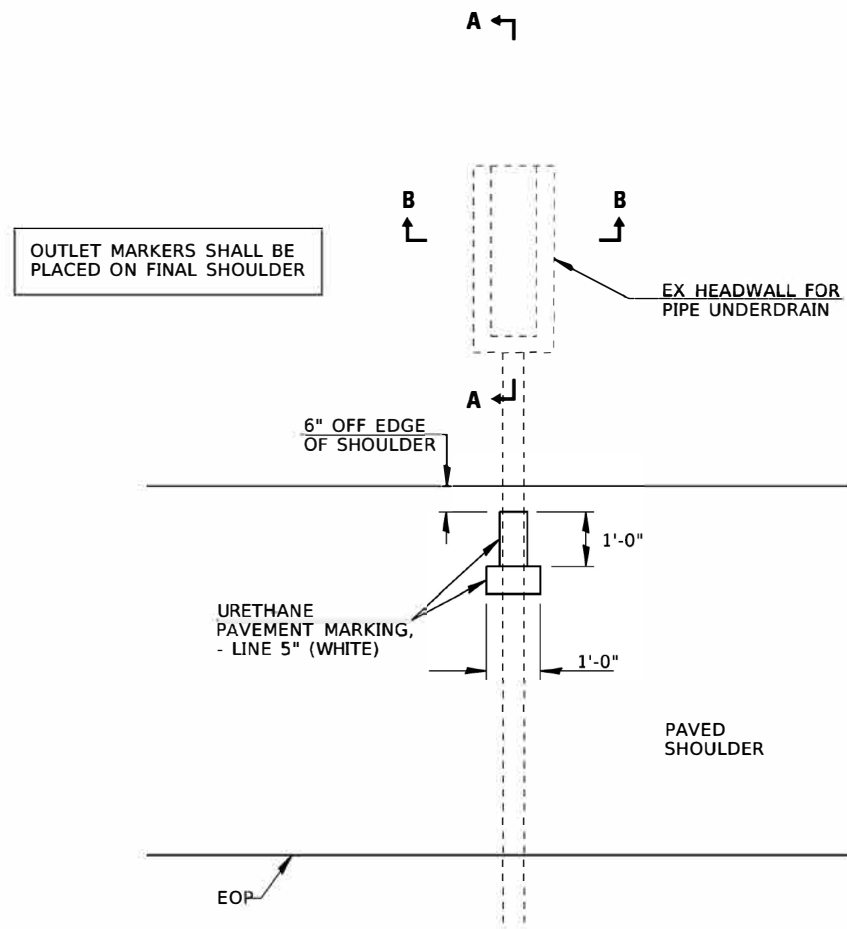
USER NAME = minderbt	DESIGNED - _____	REVISED - _____
DRAWN - _____	REVISOR - _____	REVISOR - _____
PLOT SCALE = 200.0000' / in.	CHECKED - _____	REVISOR - _____
PLOT DATE = 12/11/2020	DATE - _____	REVISOR - _____

**STATE OF ILLINOIS  
 DEPARTMENT OF TRANSPORTATION**

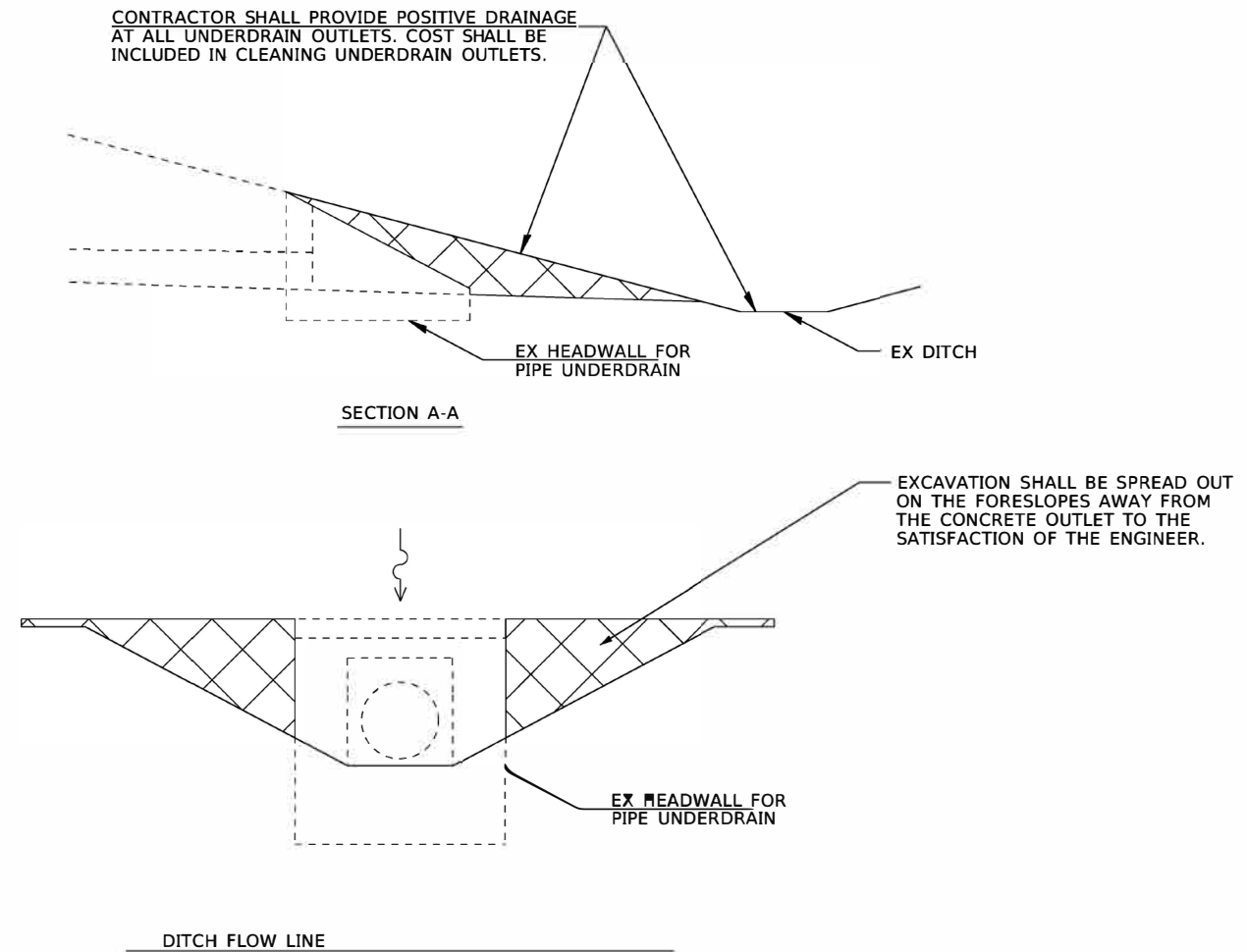
**PLAN SHEETS**

SCALE: 1" = 100'    SHEET 11 OF 11 SHEETS    STA. 225+00.00 TO STA. 246+84.55

F.A.I. RTE.	SECTION	COUNTY	TOTAL SHEETS	SHEET NO.
172	(1-5)RS-2, (1-6)RS-1	ADAMS	21	20
CONTRACT NO. 72L95				
ILLINOIS FED. AID PROJECT				



TYPICAL PIPE UNDERDRAIN MARKER DETAIL



SECTION A-A

SECTION B-B

MODEL: Default  
 FILE: M:\MIS: p:\uplanroom.dat\illinois.dot\illinois.gov\PWIDOT\Documents\DOT Offices\District: 6\Projects\067195\CADD\data\CAD\sheet\067195-sht-plan.dgn

USER NAME = mindert	DESIGNED - _____	REVISED - _____
DRAWN - _____	REVISOR - _____	REVISOR - _____
PLOT SCALE = 200.0000' / in.	CHECKED - _____	REVISOR - _____
PLOT DATE = 12/9/2020	DATE - _____	REVISOR - _____

**STATE OF ILLINOIS**  
**DEPARTMENT OF TRANSPORTATION**

**PIPE UNDERDRAIN MARKER**

SCALE: N/A    SHEET 1 OF 1 SHEETS    STA. \_\_\_\_\_ TO STA. \_\_\_\_\_

F.A.I. RTE.	SECTION	COUNTY	TOTAL SHEETS	SHEET NO.
172	(1-5)RS-2, (1-6)RS-1	ADAMS	21	21
ILLINOIS FED. AID PROJECT			CONTRACT NO. 72L95	