

FOR INDEX OF SHEETS & STATE STANDARDS
SEE SHEET NO. 2

STATE OF ILLINOIS
DEPARTMENT OF TRANSPORTATION
DIVISION OF HIGHWAYS

**PROPOSED
HIGHWAY PLANS**

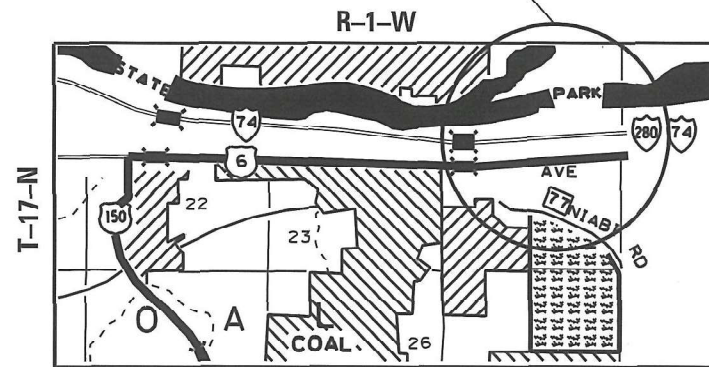
FAI 74 /280 (I-74 /280)
SECTION D2 PP 2021-3
ROCK ISLAND COUNTY
C-92-022-21

FAI RTE.	SECTION	COUNTY	TOTAL SHEETS	SHEET NO.
74/280	D2 PP 2021-3	ROCK ISLAND	4	1

CONTRACT NO. 64P80
D-92-020-21



PROJECT LOCATION WEIGH STATION RAMPS
EB AND WB



TOWNSHIP (SECTION):
COAL VALLEY (22, 23, 24)

J.U.L.I.E.
JOINT UTILITY LOCATION INFORMATION FOR EXCAVATION
1-800-892-0123

GROSS LENGTH OF PROJECT = 8078 FT = 1.53 MILES
NET LENGTH OF PROJECT = 8078 FT = 1.53 MILES

CONTRACT NO. 64P80

STATE OF ILLINOIS
DEPARTMENT OF TRANSPORTATION
DIVISION OF HIGHWAYS

SUBMITTED December 04, 20 20

[Signature]

REGION ENGINEER

January 29, 2021

[Signature]

ENGINEER OF DESIGN AND ENVIRONMENT

January 29, 2021

[Signature]

DIRECTOR OF HIGHWAYS PROJECT IMPLEMENTATION

PRINTED BY THE AUTHORITY
OF THE STATE OF ILLINOIS

INDEX

- 1 Cover Sheet
- 2 Index of Sheets / State Standards
- 3 Summary of Quantities
- 4 General Notes

STATE STANDARDS

420001-09	PAVEMENT JOINTS
420701-03	PAVEMENT WELDED WIRE REINFORCEMENT
442101-09	CLASS B PATCHES
701400-10	APPROACH TO LANE CLOSURE, FREEWAY/EXPRESSWAY
701401-12	LANE CLOSURE, FREEWAY/EXPRESSWAY
701406-12	LANE CLOSURE, FREEWAY/EXPRESSWAY, DAY OPERATIONS ONLY
701411-09	LANE CLOSURE, MULTILANE, AT ENTRANCE OR EXIT RAMP, FOR SPEEDS \geq 45MPH
701426-09	LANE CLOSURE, MULTILANE, INTERMITTENT OR MOVING OPERATIONS, FOR SPEEDS $>$ 4
701428-01	TRAFFIC CONTROL, SETUP AND REMOVAL, FREEWAY/EXPRESSWAY
701901-08	TRAFFIC CONTROL DEVICES
720011-01	METAL POST FOR SIGNS, MARKERS AND DELINEATORS
728001-01	TELESCOPING STEEL SIGN SUPPORT
729001-01	APPLICATIONS OF TYPES A AND B METAL POST (FOR SIGNS & MARKERS)

DISTRICT STANDARDS

- 34.1 Work Zone Sign Details

SUMMARY OF QUANTITIES

FAI 74/280 (I-74/280)
SECTION D2 PP 2021-3
ROCK ISLAND COUNTY
CONTRACT # 64P80
SHEET 3 OF 4

URBAN

100% State
0006

CODE NO.	ITEM	UNIT	TOTAL QUANTITY
44200050	WELDED WIRE REINFORCEMENT	SQ YD	525
44201007	CLASS B PATCHES, TYPE II 13"	SQ YD	200
44201011	CLASS B PATCHES, TYPE III 13"	SQ YD	175
44201013	CLASS B PATCHES, TYPE IV 13"	SQ YD	350
44201299	DOWEL BARS 1 1/2"	EACH	962
44213200	SAW CUT	FOOT	2508
44213204	TIE BARS 3/4"	EACH	123
67100100	MOBILIZATION	L SUM	1
70100420	TRAFFIC CONTROL AND PROTECTION, STANDARD 701411	EACH	4
70100700	TRAFFIC CONTROL AND PROTECTION, STANDARD 701406	L SUM	1
70100800	TRAFFIC CONTROL AND PROTECTION, STANDARD 701401	L SUM	1
70103815	TRAFFIC CONTROL SURVEILLANCE	CAL DAY	15
X7010410	SPEED DISPLAY TRAILER	CAL MO	3

* Specialty Items

REV. 1/20/21

GENERAL NOTES

Closed expansion joints on jointed pavements shall be re-established during the patching operations. Class B Patches - when the pavement requires patching at the location of the expansion joint, a new joint should be established using a dowelled expansion patch as shown on Highway Standard 442101. When the joint is closed, but does not require patching, an expansion joint may be formed by sawing the pavement and filling the saw cut with a preformed expansion joint filler meeting the requirements of Section 1051 of the Standard Specifications as shown on Standard 420001.

When laying out for patching, the minimum distance between new patches (saw cut to saw cut) shall be 15 feet. When patch spacing is less than 15 feet, the pavement between patches shall also be removed and replaced.

This project has areas of both bare concrete and concrete with an overlay. The thickness of the concrete ranges from 2.8 to 4.0 with an average thickness of 3.22. The overlay thickness ranges from 9.7 to 10.4 with an average thickness of 10.10. All patches for this project shall be paid for at the contract unit price for CLASS B PATCHES of the type and thickness as called out in the plans. The removal of any bituminous overlay shall not be paid for separate. All concrete patches shall be flush with the existing pavement. No patches shall be overlaid.

FILE NAME = 64P80.GN.DOCX	USER NAME =	DESIGNED - Engineering Systems	REVISED -	STATE OF ILLINOIS DEPARTMENT OF TRANSPORTATION	GENERAL NOTES					ROUTE	SECTION	COUNTY	TOTAL SHEETS	SHEET NO.
	PLOT SCALE =	DRAWN -	REVISED -							FAI 74/280	D2 PP 2021-3	Rock Island	4	4
	PLOT DATE = 12/3/2020 3:34 PM	CHECKED -	REVISED -		CONTRACT NO. 64P80	ILLINOIS	FED. AID PROJECT							
		DATE - 12/3/2020 9:53 AM	REVISED -	SCALE:	SHEET NO.	OF	SHEETS	STA.	TO STA.					