

STATE OF ILLINOIS
DEPARTMENT OF TRANSPORTATION

F.A.P. RTE.	SECTION	COUNTY	TOTAL SHEETS	SHEET NO.
116	D7 PATCHING 2021-3	CUMBERLAND	5	1
		ILLINOIS	CONTRACT NO. 74A33	

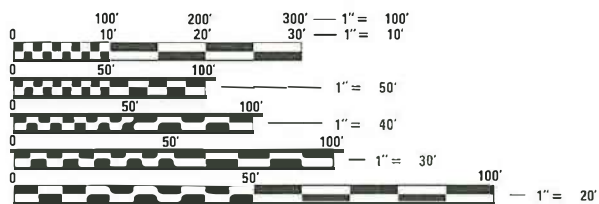
FOR INDEX OF SHEETS, SEE SHEET NO. 2

ADT = 2,400 (2019)

PROPOSED
HIGHWAY PLANS

FAP 116 / FAI 70 (IL 130 / I-70)
SECTION D7 PATCHING 2021-3
PAVEMENT PATCHING
CUMBERLAND COUNTY

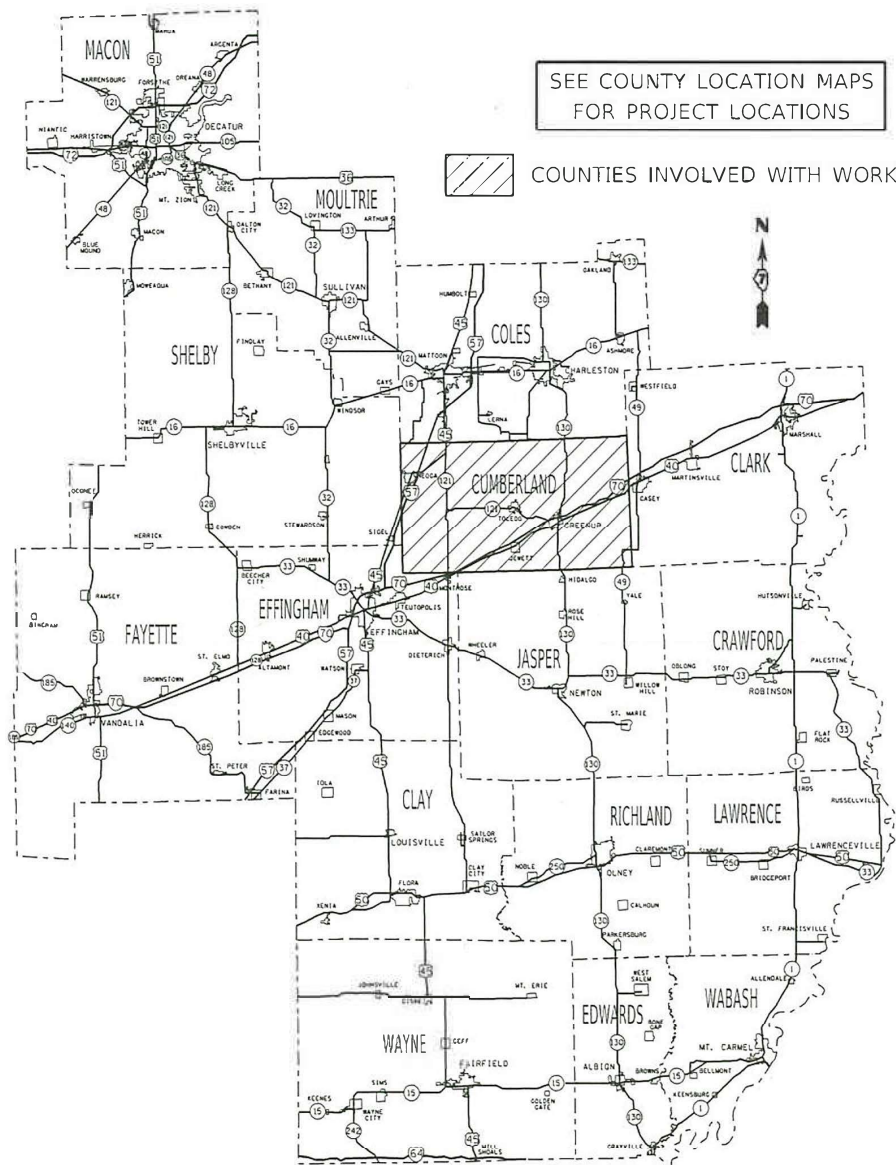
C-97-117-21



FULL SIZE PLANS HAVE BEEN PREPARED USING STANDARD ENGINEERING SCALES. REDUCED SIZED PLANS WILL NOT CONFORM TO STANDARD SCALES. IN MAKING MEASUREMENTS ON REDUCED PLANS, THE ABOVE SCALES MAY BE USED.

J.U.L.I.E.
JOINT UTILITY LOCATION INFORMATION FOR EXCAVATORS
1-800-892-0123
OR 811

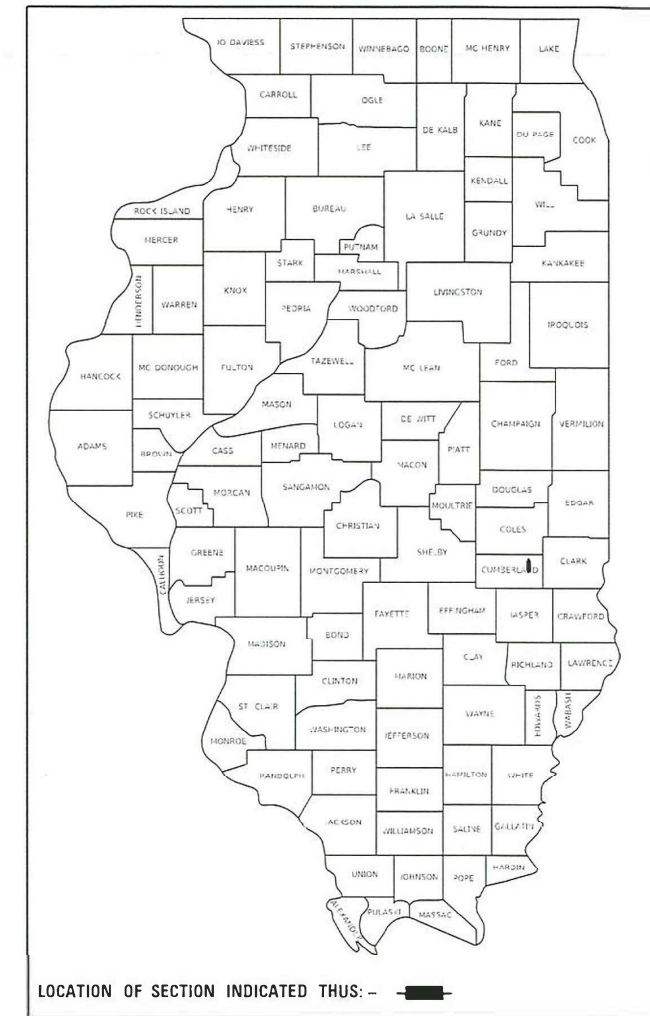
PROJECT ENGINEER TOM RONAN
PROJECT MANAGER TOM RONAN
PHONE: (217)342-8320
CONTRACT NO. 74A33



SEE COUNTY LOCATION MAPS FOR PROJECT LOCATIONS

▨ COUNTIES INVOLVED WITH WORK

D-97-064-21



STATE OF ILLINOIS
DEPARTMENT OF TRANSPORTATION

SUBMITTED January 11 20 21
Jeffrey P. Myer
REGIONAL ENGINEER

January 29, 2021
Scott A. Elk
ENGINEER OF DESIGN AND ENVIRONMENT

January 29, 2021
Samuel J. [Signature]
DIRECTOR OF HIGHWAYS PROJECT IMPLEMENTATION

PRINTED BY THE AUTHORITY
OF THE STATE OF ILLINOIS

INDEX OF SHEETS

- 1 COVER SHEET
- 2 INDEX OF SHEETS AND GENERAL NOTES
- 3 SUMMARY OF QUANTITIES
- 4 SCHEDULE OF QUANTITIES
- 5 LOCATION MAP

THE FOLLOWING STANDARDS ARE A PART OF THESE PLANS AND ARE INCLUDED AFTER SHEET NO. 5:

- 000001-08 STANDARD SYMBOLS, ABBREVIATIONS AND PATTERNS
- 001001-02 AREAS OF REINFORCEMENT BARS
 - 001006 DECIMAL OF AN INCH AND A FOOT
- 420001-09 PAVEMENT JOINTS
- 420701-03 PAVEMENT WELDED WIRE REINFORCEMENT
- 442101-09 CLASS B PATCHES
- 701001-02 OFF-RD OPERATIONS, 2L, 2W, MORE THAN 15' AWAY
- 701006-05 OFF-RD OPERATIONS, 2L, 2W, 15' TO 24" FROM PAVEMENT EDGE
- 701101-05 OFF-RD OPERATIONS, MULTILANE, 15' TO 24" FROM PAVEMENT EDGE
- 701106-02 OFF-RD OPERATIONS, MULTILANE, MORE THAN 15' AWAY
- 701201-05 LANE CLOSURE, 2L, 2W, DAY ONLY
- 701456-05 PARTIAL RAMP CLOSURE
- 701701-10 URBAN LANE CLOSURE AT INTERSECTION
- 701901-08 TRAFFIC CONTROL DEVICES

GENERAL NOTES

THE ACTUAL LOCATIONS OF PAVEMENT PATCHING AND FINAL QUANTITIES SHALL BE DETERMINED BY THE ENGINEER IN THE FIELD.

MODEL: Default
 FILE: \\blm1c1.pw.us.ibm.com\data\illinois.gov\PIWIDOT\Documents\IDOT_Offices\District_7\Projects\7A33\CAD\data\CAD\sheets\ID77A33-sht-genote.dgn

USER NAME = steffenmk PLOT SCALE = 100.0000' / in. PLOT DATE = 1/11/2021	DESIGNED - DRAWN - CHECKED - DATE -	REVISED - REVISED - REVISED - REVISED -	STATE OF ILLINOIS DEPARTMENT OF TRANSPORTATION	INDEX OF SHEETS AND GENERAL NOTES	<table border="1" style="width: 100%; border-collapse: collapse;"> <tr> <th style="font-size: small;">F.A.P. RTE.</th> <th style="font-size: small;">SECTION</th> <th style="font-size: small;">COUNTY</th> <th style="font-size: small;">TOTAL SHEETS</th> <th style="font-size: small;">SHEET NO.</th> </tr> <tr> <td style="text-align: center;">116</td> <td style="text-align: center;">D7 PATCHING 2021-3</td> <td style="text-align: center;">CUMBERLAND</td> <td style="text-align: center;">5</td> <td style="text-align: center;">2</td> </tr> <tr> <td colspan="5" style="text-align: center; font-size: x-small;">CONTRACT NO. 74A33</td> </tr> <tr> <td colspan="5" style="text-align: center; font-size: x-small;">ILLINOIS FED. AID PROJECT</td> </tr> </table>	F.A.P. RTE.	SECTION	COUNTY	TOTAL SHEETS	SHEET NO.	116	D7 PATCHING 2021-3	CUMBERLAND	5	2	CONTRACT NO. 74A33					ILLINOIS FED. AID PROJECT				
F.A.P. RTE.	SECTION	COUNTY	TOTAL SHEETS	SHEET NO.																					
116	D7 PATCHING 2021-3	CUMBERLAND	5	2																					
CONTRACT NO. 74A33																									
ILLINOIS FED. AID PROJECT																									
			SCALE:	SHEET 1 OF 1 SHEETS	STA. TO STA.																				

100%
STATE

SUMMARY OF QUANTITIES			TOTAL QUANTITIES	CONSTRUCTION TYPE CODE		
CODE NO	ITEM	UNIT		0006		
44200050	WELDED WIRE REINFORCEMENT	SO YD	1346	1346		
44201007	CLASS B PATCHES, TYPE II, 13 INCH	SO YD	249	249		
44201011	CLASS B PATCHES, TYPE III, 13 INCH	SO YD	74	74		
44201013	CLASS B PATCHES, TYPE IV, 13 INCH	SO YD	1294	1294		
44201299	DOWEL BARS 1 1/2"	EACH	940	940		
44213200	SAW CUTS	FOOT	3863	3863		
44213204	TIE BARS 3/4"	EACH	382	382		
67100100	MOBILIZATION	L SUM	1	1		
70100450	TRAFFIC CONTROL AND PROTECTION, STANDARD	L SUM	1	1		
	701201					
70100825	TRAFFIC CONTROL AND PROTECTION, STANDARD	L SUM	1	1		
	701456					
70102635	TRAFFIC CONTROL AND PROTECTION, STANDARD	L SUM	1	1		
	701701					
70107025	CHANGEABLE MESSAGE SIGN	CAL DA	28	28		

MODEL: Default
 FILE: \\nrcs-pub\pubroom\dat\illinois.gov\PI\DOT\Documents\DOT_Offices\ID\dtct_7\Projects\74A33\CAD\Drawings\CAD\Drawings\74A33-shs-SOC.dgn

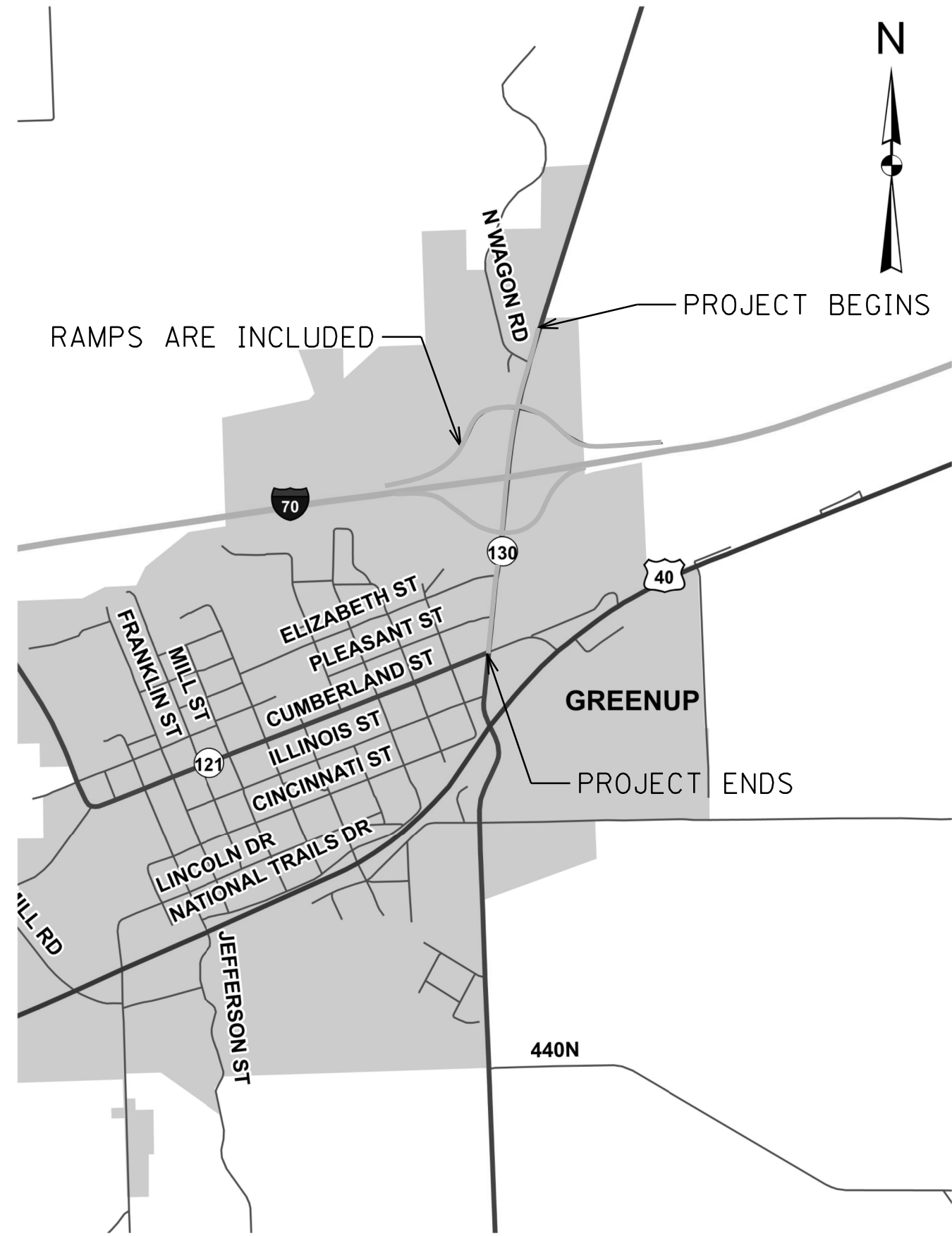
USER NAME = steffenmk	DESIGNED -	REVISED -
	DRAWN -	REVISED -
PLOT SCALE = 100.0000' / in.	CHECKED -	REVISED -
PLOT DATE = 1/11/2021	DATE -	REVISED -

**STATE OF ILLINOIS
DEPARTMENT OF TRANSPORTATION**

SUMMARY OF QUANTITIES

SCALE: SHEET 1 OF 1 SHEETS STA. TO STA.

F.A.P. RTE.	SECTION	COUNTY	TOTAL SHEETS	SHEET NO.
116	D7 PATCHING 2021-3	CUMBERLAND	5	3
CONTRACT NO. 74A33				
ILLINOIS FED. AID PROJECT				



MODEL: Default
 FILE: Model.ctb
 C:\Users\stef\OneDrive\Documents\DOT - Offices\District 7\Projects\74A33\CADD\Drawings\74A33-518-bce-bce.dgn

USER NAME = stefenmk	DESIGNED -	REVISED -
	DRAWN -	REVISED -
PLOT SCALE = 100,0000' / in.	CHECKED -	REVISED -
PLOT DATE = 1/11/2021	DATE -	REVISED -

STATE OF ILLINOIS
DEPARTMENT OF TRANSPORTATION

LOCATION MAP

SCALE: SHEET 1 OF 1 SHEETS STA. TO STA.

F.A.P. RTE.	SECTION	COUNTY	TOTAL SHEETS	SHEET NO.
116	D7 PATCHING 2021-3	CUMBERLAND	5	5
CONTRACT NO. 74A33				
ILLINOIS FED. AID PROJECT				