

## HIGHWAY STANDARDS

- 000001-08 STANDARD SYMBOLS, ABBREVIATIONS AND PATTERNS
- 001001-02 AREAS OF REINFORCEMENT BARS
- 001006 DECIMAL OF AN INCH AND OF A FOOT
- 280001-07 TEMPORARY EROSION CONTROL SYSTEMS
- 424001-11 PERPENDICULAR CURB RAMPS FOR SIDEWALKS
- 542306-03 PRECAST REINFORCED CONCRETE ELLIPTICAL FLARED END SECTION
- 542401-04 METAL FLARED END SECTION FOR PIPE CULVERTS
- 601001-05 PIPE UNDERDRAINS
- 602402-03 PRECAST MANHOLE TYPE A 5' DIAMETER
- 602406-11 PRECAST MANHOLE TYPE A 6' DIAMETER
- 602601-06 PRECAST REINFORCED CONCRETE FLAT SLAB TOP
- 602701-02 MANHOLE STEPS
- 604001-05 FRAME AND LIDS TYPE 1
- 606001-07 CONCRETE CURB TYPE B AND COMBINATION CONCRETE CURB AND GUTTER
- 606101-05 TYPE A GUTTER (INLET, OUTLET & ENTRANCE)
- 664001-02 CHAIN LINK FENCE
- 701001-02 OFF-RD OPERATIONS, 2L, 2W, MORE THAN 15' AWAY
- 701006-05 OFF-RD OPERATIONS, 2L, 2W, 15' TO 24" FROM PAVEMENT EDGE
- 701101-05 OFF-RD OPERATIONS, MULTILANE, 15' TO 24" FROM PAVEMENT EDGE
- 701106-02 OFF-RD OPERATIONS, MULTILANE, MORE THAN 15' AWAY
- 701501-06 URBAN LANE CLOSURE, 2L, 2W, UNDIVIDED
- 701901-08 TRAFFIC CONTROL DEVICES
- 720001-01 SIGN PANEL MOUNTING DETAILS
- 720006-04 SIGN PANEL ERECTION DETAILS
- 720011-01 METAL POSTS FOR SIGNS, MARKERS & DELINEATORS
- 728001-01 TELESCOPING STEEL SIGN SUPPORT
- 729001-01 APPLICATIONS OF TYPES A & B METAL POSTS (FOR SIGNS & MARKERS)
- 780001-05 TYPICAL PAVEMENT MARKINGS
- B.L.R. 14-12 PORTLAND CEMENT CONCRETE PAVEMENT

## BITUMINOUS MIXTURE REQUIREMENTS

MIXTURE USES	AC/PG	DESIGN AIR VOIDS	MIXTURE COMPOSITION	FRICTION AGGREGATE
HOT-MIX ASPHALT SURF. CSE.	PG-64-22	4.0% @ N <sub>DES</sub> =50	IL-9.5	MIX "C"

## GENERAL NOTES

THIS SECTION SHALL BE CONSTRUCTED IN ACCORDANCE WITH THE PLANS, STANDARD SPECIFICATIONS FOR ROAD AND BRIDGE CONSTRUCTION, ADOPTED APRIL 1, 2016, SUPPLEMENTAL SPECIFICATIONS, AND THE SPECIAL PROVISIONS.

ALL EARTH SURFACES DISTURBED IN CONJUNCTION OF THE NEW PAVEMENT AND APPURTENANCES SHALL BE SEEDED IN ACCORDANCE WITH SECTION 250 AND MULCHED IN ACCORDANCE WITH SECTION 251 AND THE SPECIAL PROVISIONS.

THE LOCATION OF THE VARIOUS UNDERGROUND UTILITIES AS SHOWN ON THE PLANS ARE FROM INFORMATION FURNISHED BY THE VARIOUS UTILITY COMPANIES, RECORD DRAWINGS, AND FIELD SURVEYS. IT IS THE CONTRACTOR'S OBLIGATION TO ESTABLISH THE ACTUAL UTILITIES. THE CONTRACTOR SHALL USE SPECIAL CARE WHEN CONDUCTING OPERATIONS NEAR THE UTILITIES SO AS TO PREVENT DAMAGE TO THEM.

THE COST OF REMOVING ANY MISCELLANEOUS ITEMS LOCATED WITHIN THE LIMITS OF THIS IMPROVEMENT AND WHICH HAVE NOT BEEN ACCOUNTED FOR AS A PAY ITEM SHALL BE CONSIDERED INCLUDED IN THE CONTRACT.

THE FINAL FINISH FOR PCC PAVEMENT SHALL BE TYPE B IN ACCORDANCE WITH ARTICLE 420.09(e).

- THE FOLLOWING APPLICATION RATES WERE USED IN DETERMINING PLAN QUANTITIES:
- BITUMINOUS MATERIALS (PRIME COAT) = 0.25 LBS/SQ FT ON AGGREGATE BASES
  - HMA SURFACE COURSE = 112 LBS/SQ YD PER INCH OF THICKNESS
  - TEMPORARY EROSION CONTROL SEEDING = 100 LBS/ACRE
  - AGGREGATE SHOULDERS = 2 TONS/CU YD

## COMMITMENTS

A BIOLOGICAL COMMITMENT HAS BEEN MADE TO PROTECT THE SUMMER ROOSTING AND MATERNITY HABITAT OF THE FEDERALLY ENDANGERED INDIANA BAT AND THE PROPOSED AS ENDANGERED NORTHERN LONG-EARED BAT. TREES THREE (3) INCHES OR GREATER IN DIAMETER AT BREAST HEIGHT SHALL NOT BE CLEARED FROM APRIL 1ST THROUGH SEPTEMBER 30 OF ANY GIVEN YEAR.

A COMMITMENT HAS BEEN MADE TO CONSTRUCT THIS PROJECT IN COMPLIANCE WITH THE U.S. ARMY CORPS OF ENGINEERS NATIONWIDE PERMIT 42 ISSUED UNDER SECTION 404 OF THE CLEAN WATER ACT. A COPY OF U.S. ARMY CORPS OF ENGINEERS PERMIT NO. CEMVR-OD-P-2015-970 AND FACT SHEET NO. 7(IL) WHICH DESCRIBES THESE REQUIREMENTS IS INCLUDED WITH THE SPECIAL PROVISIONS.

A COMMITMENT HAS BEEN MADE TO CONSTRUCT THIS PROJECT IN COMPLIANCE WITH SECTION 401 OF THE CLEAN WATER ACT. A COPY OF THE SECTION 401 WATER QUALITY CERTIFICATION LOG NO. C-0453-15 ISSUED BY ILLINOIS ENVIRONMENTAL PROTECTION AGENCY IS INCLUDED WITH THE SPECIAL PROVISIONS.

A COMMITMENT HAS BEEN MADE TO CONSTRUCT THE PROJECT IN ACCORDANCE WITH ILLINOIS DEPARTMENT OF NATURAL RESOURCES-OFFICE OF WATER RESOURCES PART 3700 FLOODWAY CONSTRUCTION RULES. A COPY IDNR-OWR PERMIT NO. DS2019103 WHICH DESCRIBES THESE REQUIREMENTS IS INCLUDED WITH THE SPECIAL PROVISIONS.

MODEL NAME = Default  
FILE NAME = I:\Decatur\_Park\_District\6648\_SCBW\_Ph\_2B\BDM\_07-0420\CODE\Civil\6648\_Sch02\_Summary & Intro.dgn

USER NAME = mfooster	DESIGNED - MBF	REVISED - MBF 2/21/2021
PLOT SCALE = 2.0000' / in.	CHECKED -	REVISED -
PLOT DATE = 2/25/2021	DATE - 1/21/2021	REVISED -



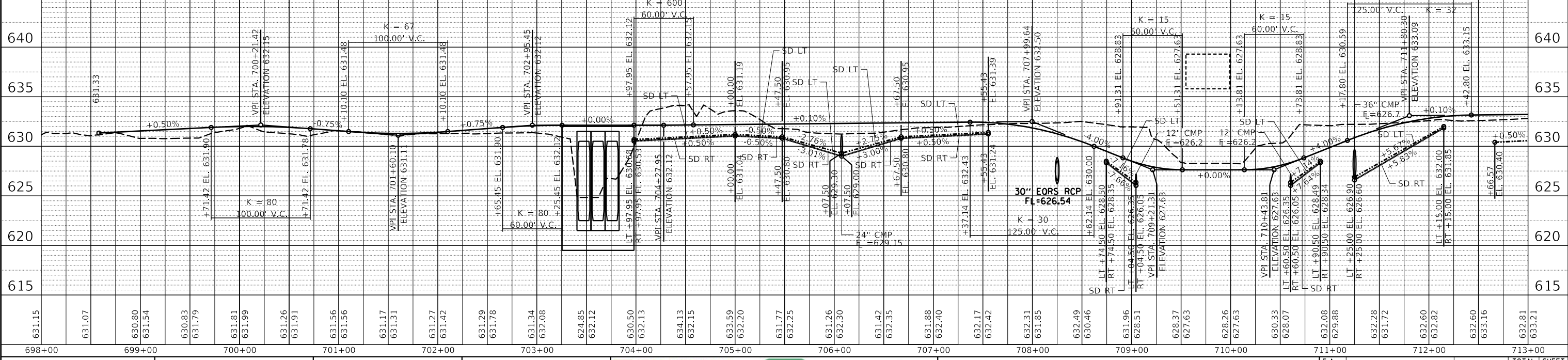
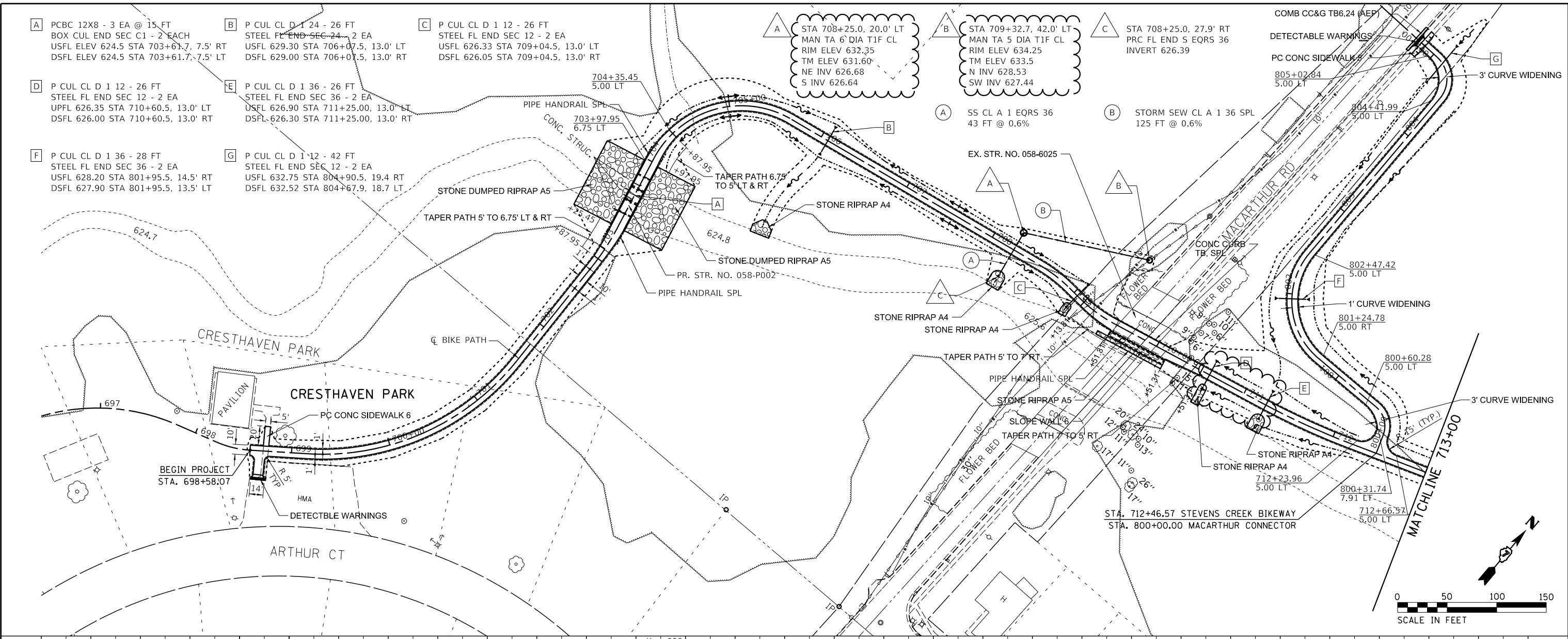
<b>STEVENS CREEK BIKEWAY – PHASE 2B</b>			
<b>HIGHWAY STANDARDS, GENERAL NOTES &amp; COMMITMENTS</b>			
SCALE: N/A	SHEET 1 OF 1 SHEETS	STA. N/A	TO STA. N/A

F.A. RTE.	SECTION	COUNTY	TOTAL SHEETS	SHEET NO.
	14-P4000-01-BT	MACON	94	2
<b>CONTRACT NO. 95892</b>				
ILLINOIS FED. AID PROJECT				

PLAN	SURVEYED	DATE
	PLOTTED	BY
	NOTED	
	CHECKED	
	STRUCTURE	
	NOTATIONS	
	CHFD	
	NO.	
	CADD FILE NAME	

PROFILE	SURVEYED	DATE
	PLOTTED	BY
	NOTED	
	CHECKED	
	STRUCTURE	
	NOTATIONS	
	CHFD	
	NO.	
	CADD FILE NAME	

MODEL NAME: Default  
FILE NAME: I:\Decatur\_Park-District\6648\_SCBW\_Ph 2B (BDM\_07-0420)\CADD\_Civil\6648\_Sketch\_P801.dgn



USER NAME = mfooster	DESIGNED - MBF	REVISED - MBF 2/24/2021
DRAWN - RLK	CHECKED -	REVISED -
PLOT SCALE = 100.0000' / in.	DATE - 1/21/2021	REVISED -
PLOT DATE = 2/25/2021		



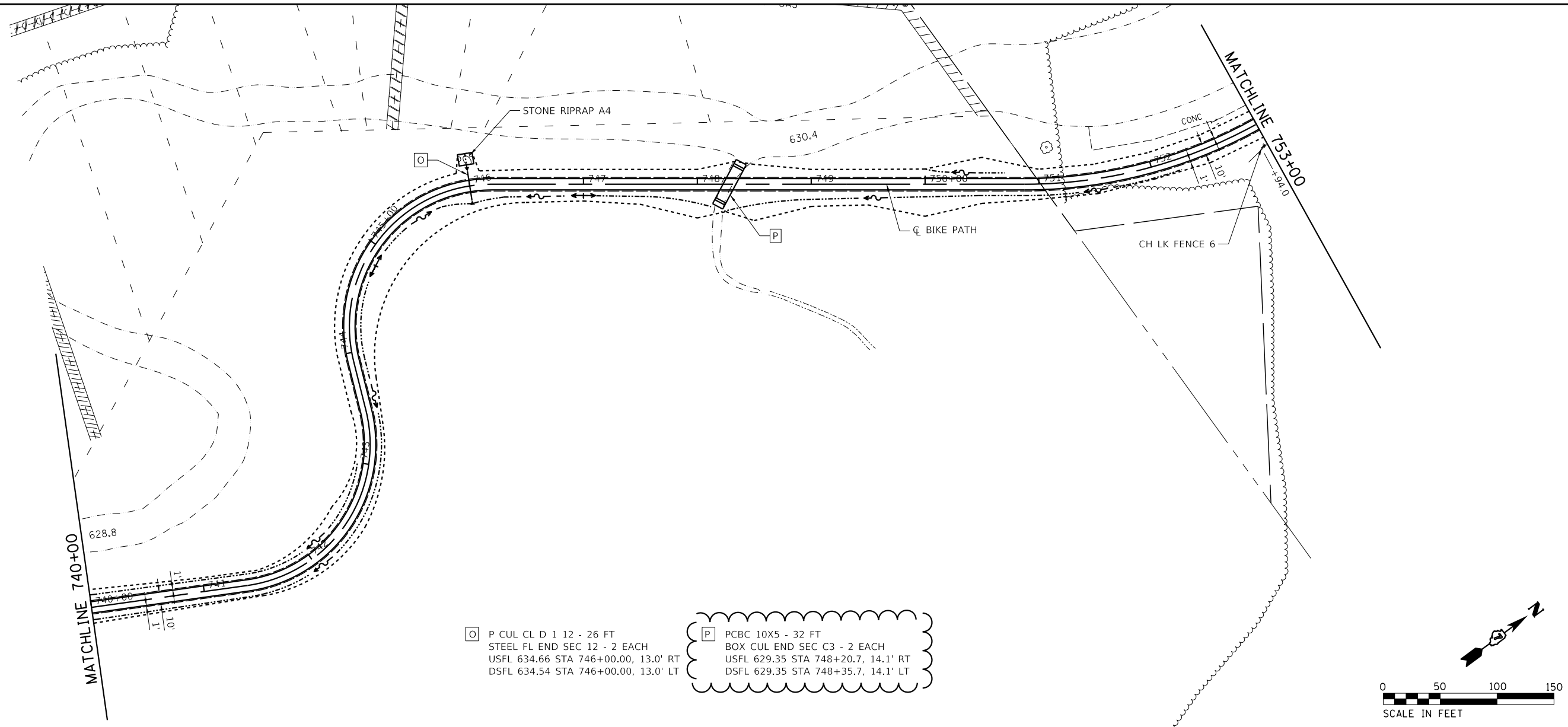
**STEVENS CREEK BIKEWAY - PHASE 2B**  
**PLAN & PROFILE**  
SCALE: 1" = 50' SHEET 1 OF 7 SHEETS STA. 698+00 TO STA. 713+00

F.A. RTE.	SECTION	COUNTY	TOTAL SHEETS	SHEET NO.
	14-P4000-01-BT	MACON	94	20
CONTRACT NO. 95892				
ILLINOIS FED. AID PROJECT				

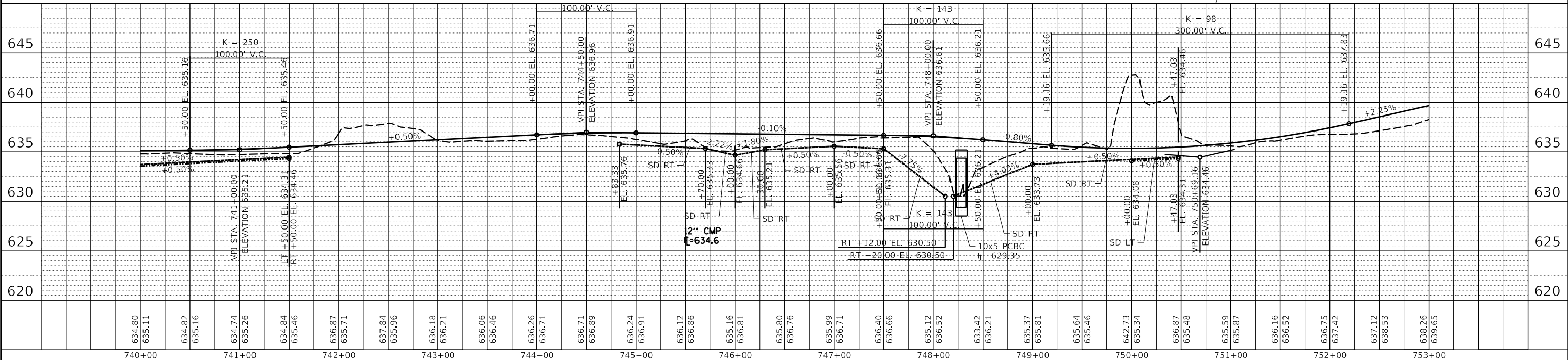
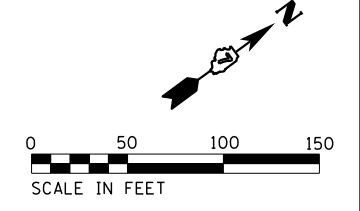
PLAN	SURVEYED	DATE
	PLOTTED	BY
	ALIGNED	
	CHECKED	
	FILE NAME	
	NO.	

PROFILE	SURVEYED	DATE
	PLOTTED	BY
	GRADES CHECKED	
	STRUCTURE NOTATIONS CHFD	
	NO.	

MODEL NAME: Default  
FILE NAME: I:\Decatur\_Park\_District\6648\_SCBW\_P18\_IBCM\_07-04-20\1\CAD\1\6648\_S18023\_P1804.dgn



- O** P CUL CL D 12 - 26 FT  
STEEL FL END SEC 12 - 2 EACH  
USFL 634.66 STA 746+00.00, 13.0' RT  
DSFL 634.54 STA 746+00.00, 13.0' LT
- P** PCBC 10X5 - 32 FT  
BOX CUL END SEC C3 - 2 EACH  
USFL 629.35 STA 748+20.7, 14.1' RT  
DSFL 629.35 STA 748+35.7, 14.1' LT



USER NAME = mfooster	DESIGNED - MBF	REVISED - MBF 2/24/2021
PLOT SCALE = 100.0000' / in.	DRAWN - RLK	REVISED -
PLOT DATE = 2/25/2021	CHECKED -	REVISED -
	DATE - 1/21/2021	REVISED -

**CHASTAIN & ASSOCIATES LLC**  
CONSULTING ENGINEERS  
SERVICE | SOLUTIONS | COMMITMENT

**Decatur**  
- PARK DISTRICT -

**STEVENS CREEK BIKEWAY - PHASE 2B**  
**PLAN & PROFILE**

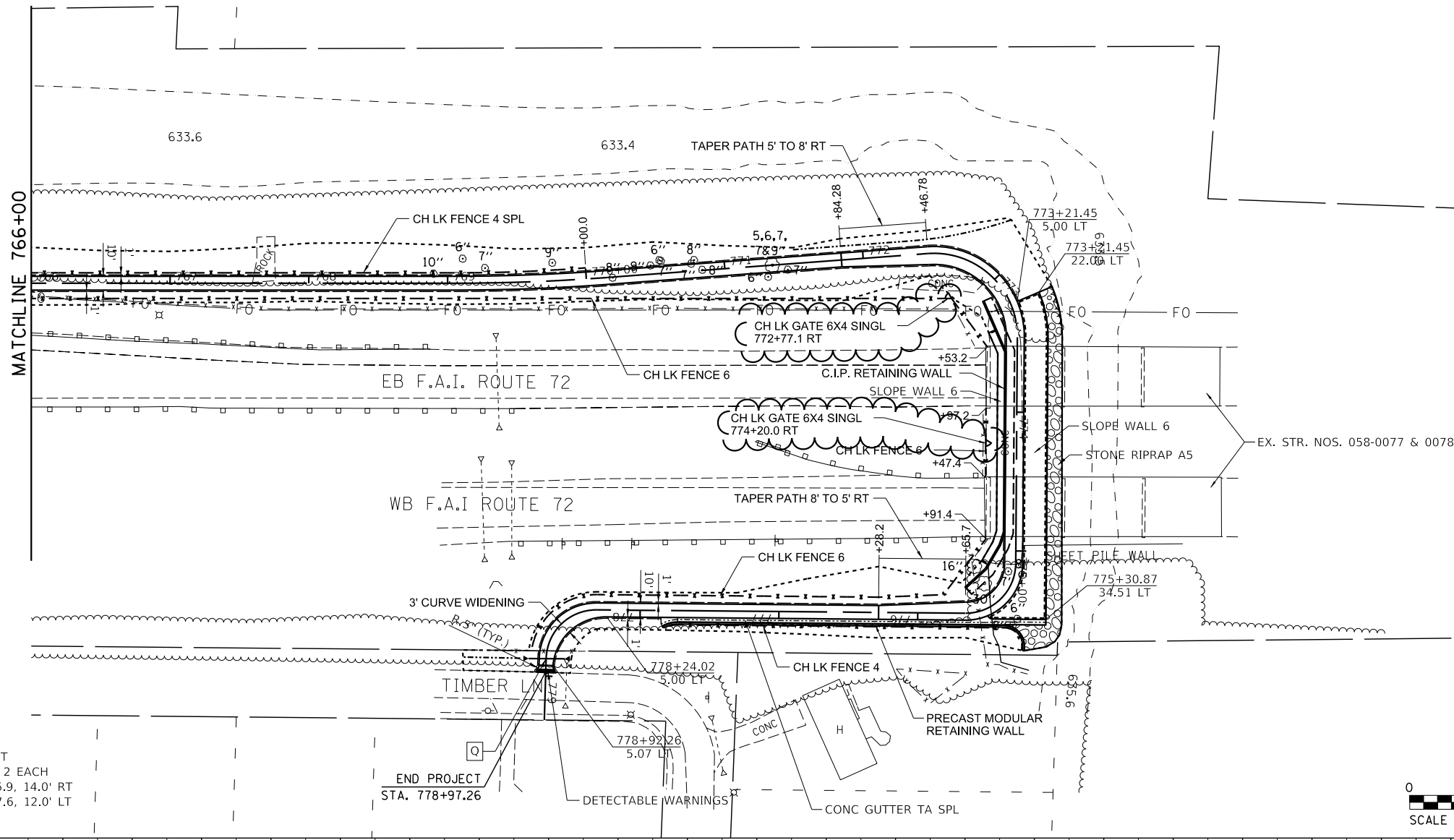
SCALE: 1" = 50' SHEET 4 OF 7 SHEETS STA. 740+00 TO STA. 753+00

F.A. RTE.	SECTION	COUNTY	TOTAL SHEETS	SHEET NO.
	14-P4000-01-BT	MACON	94	23
CONTRACT NO. 95892				
ILLINOIS FED. AID PROJECT				

PLAN	SURVEYED	DATE
	PLOTTED	
	CHECKED	
	ALIGNED	
	FILED	
NOTE BOOK NO.	CADD FILE NAME	

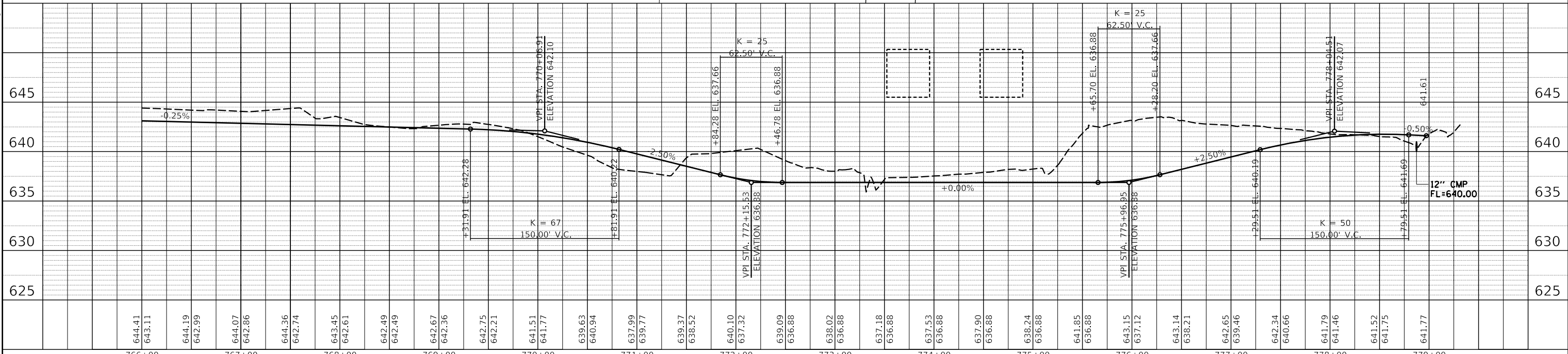
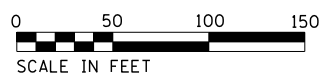
PROFILE	SURVEYED	DATE
	PLOTTED	
	CHECKED	
	ALIGNED	
	FILED	
NOTE BOOK NO.	CADD FILE NAME	

MODEL NAME: Default  
FILE NAME: I:\Decatur\_Park\_District\6648\_SCBW\_PH 2B (BDM\_07-04-2021)\CADD\_Civil\6648\_Sch025\_P896.dgn



Q P CUL CL D 12 - 26 FT  
STEEL FL END SEC 12 - 2 EACH  
USFL 640.6 STA 778+86.9, 14.0' RT  
DSFL 640.3 STA 778+87.6, 12.0' LT

END PROJECT  
STA. 778+97.26



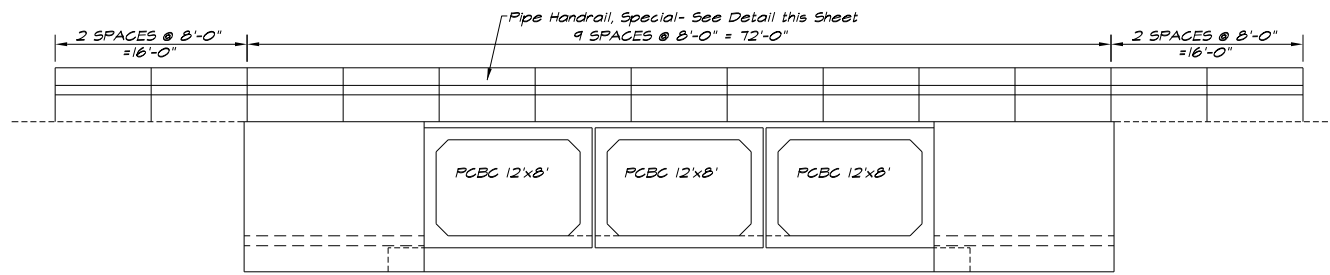
USER NAME = mfooster	DESIGNED - MBF	REVISED - MBF 2/24/2021
	DRAWN - RLK	REVISED -
PLOT SCALE = 100.0000' / in.	CHECKED -	REVISED -
PLOT DATE = 2/25/2021	DATE - 1/21/2021	REVISED -

**CHASTAIN & ASSOCIATES LLC**  
CONSULTING ENGINEERS  
SERVICE | SOLUTIONS | COMMITMENT

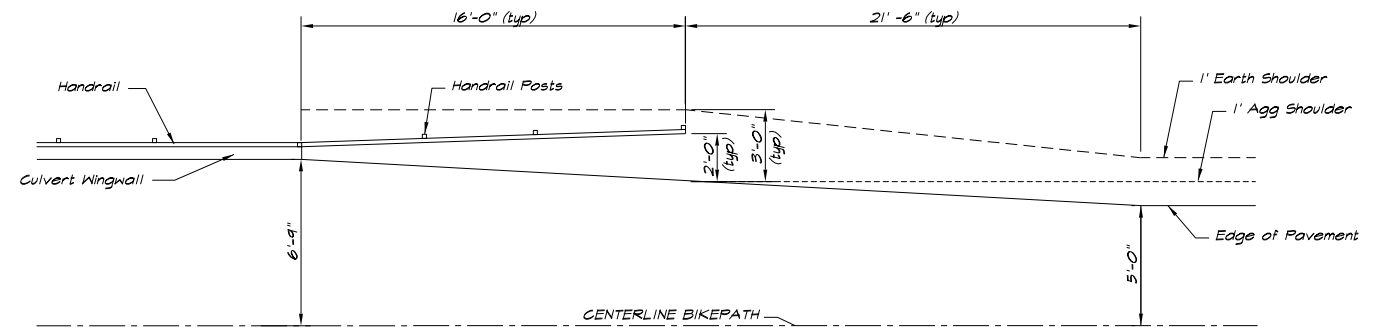
**Decatur**  
- PARK DISTRICT -

**STEVENS CREEK BIKEWAY - PHASE 2B**  
**PLAN & PROFILE**  
SCALE: 1" = 50' SHEET 6 OF 7 SHEETS STA. 766+00 TO STA. 779+34.77

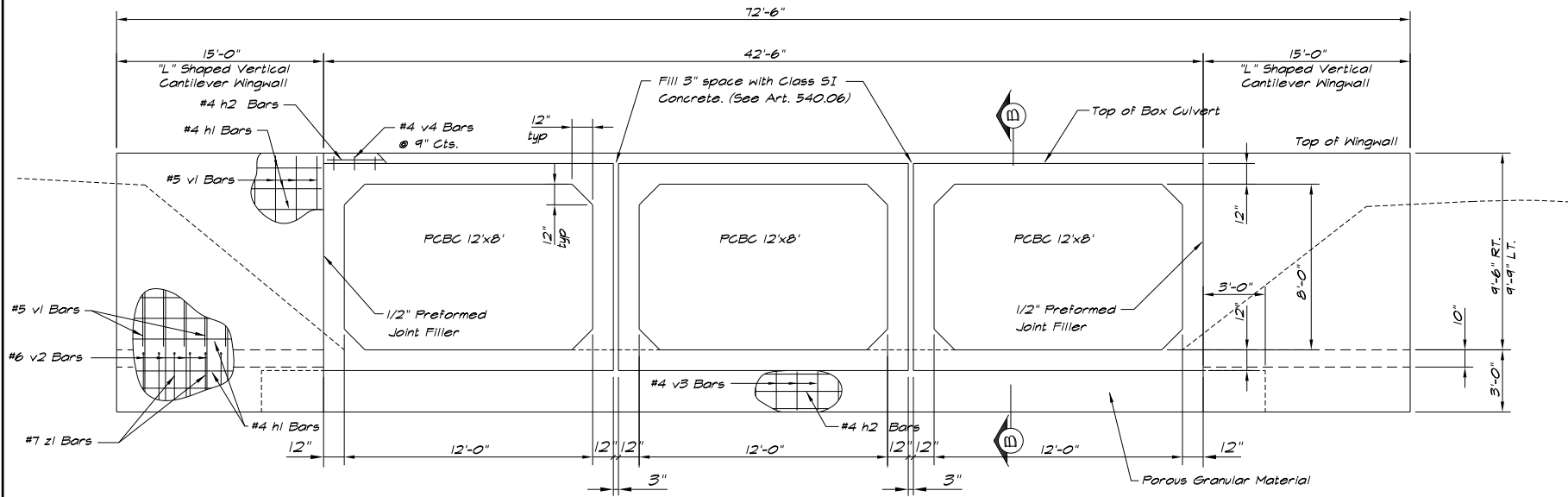
F.A. RTE.	SECTION	COUNTY	TOTAL SHEETS	SHEET NO.
	14-P4000-01-BT	MACON	94	25
CONTRACT NO. 95892				
ILLINOIS FED. AID PROJECT				



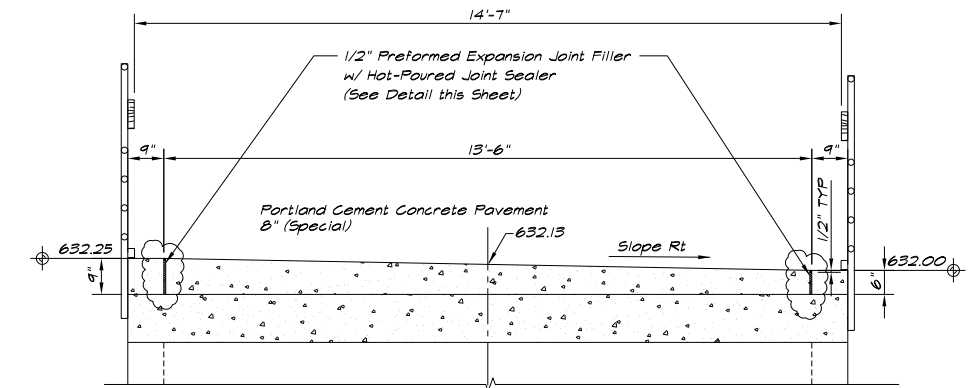
CULVERT ELEVATION SHOWING RAILING  
1/8" = 1'-0"



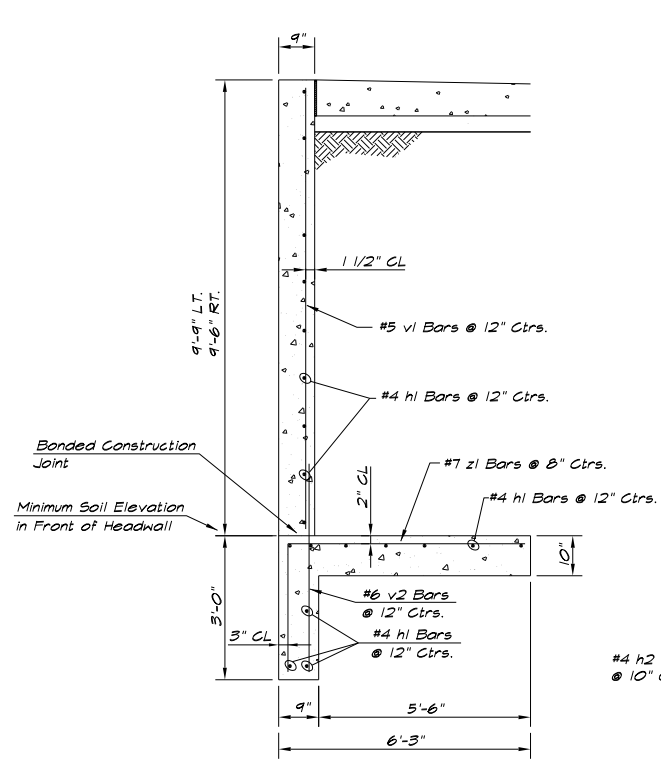
HANDRAIL TRANSITION DETAIL  
1/4" = 1'-0"



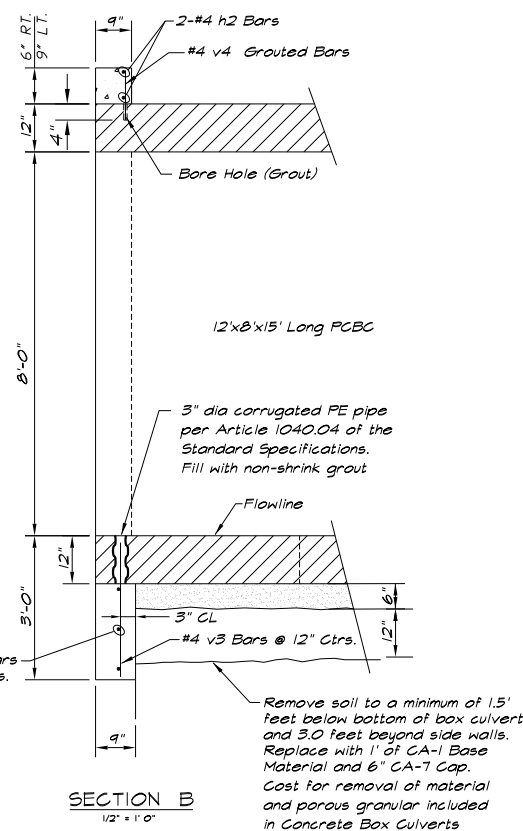
CULVERT HEADWALL  
1/4" = 1'-0"



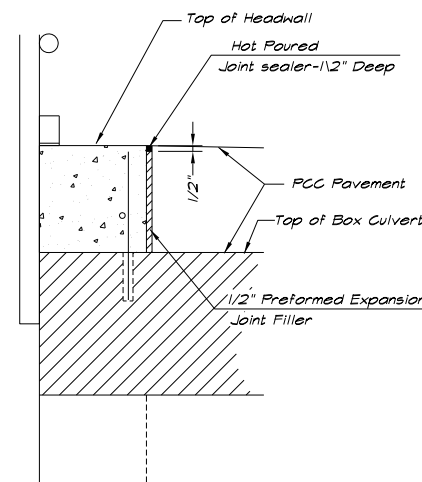
SECTION THRU TOP SLAB  
1/2" = 1'-0"



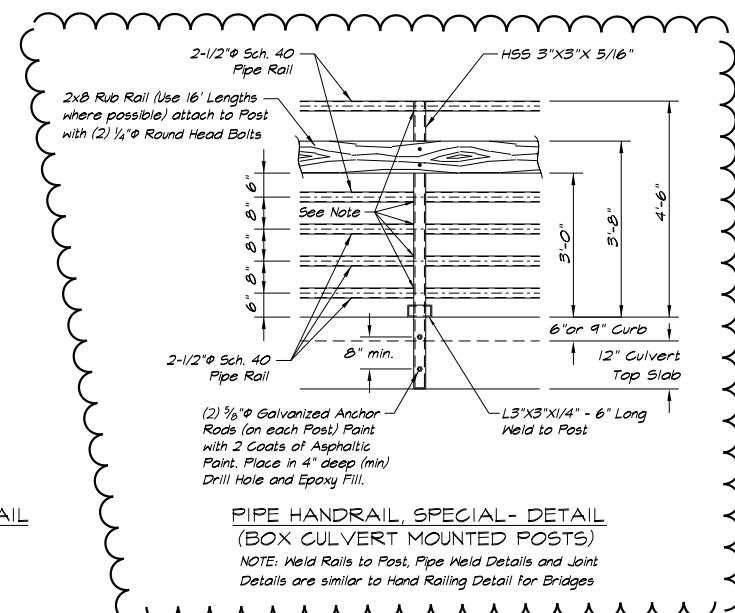
TYPICAL HEADWALL SECTION  
1/2" = 1'-0"



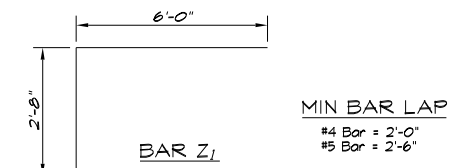
SECTION B  
1/2" = 1'-0"



EXPANSION JOINT & SEALER DETAIL  
1 1/2" = 1'-0"



PIPE HANDRAIL, SPECIAL- DETAIL  
(BOX CULVERT MOUNTED POSTS)  
NOTE: Weld Rails to Post, Pipe Weld Details and Joint Details are similar to Hand Railing Detail for Bridges



BILL OF MATERIAL  
(2 END SECTIONS)

Bar	No.	Size	Length	Shape	
h1(E)	80	#4	14'-9"	---	
h2(E)	20	#4	22'-3"	---	
v1(E)	64	#5	9'-3"	---	
v2(E)	64	#6	5'-6"	---	
v3(E)	86	#4	2'-8"	---	
v4(E)	114	#4	0'-8"	---	
z1(E)	92	#7	3'-10"	---	
Concrete Box Culverts				Cu. Yd.	37.4
Reinforcement Bars, Epoxy Coated				Pound	3160

Notes: Reinforcement bars designated (E) shall be epoxy coated.

MODEL NAME = Default  
FILE NAME = I:\Subcontract\Part-District\6648\_SCBW\_Ph\_2B\_IBCM\_07-24-2020\CADD\Civil\6648\_Sch-07-24-2020\_Box\_Culv\_Details.dgn

USER NAME = mfooster	DESIGNED - JMB	REVISED - MBF 2/5/2021
PLOT SCALE = 8.000000' / in.	DRAWN -	REVISED -
PLOT DATE = 2/25/2021	CHECKED -	REVISED -
	DATE - 1/21/2021	REVISED -

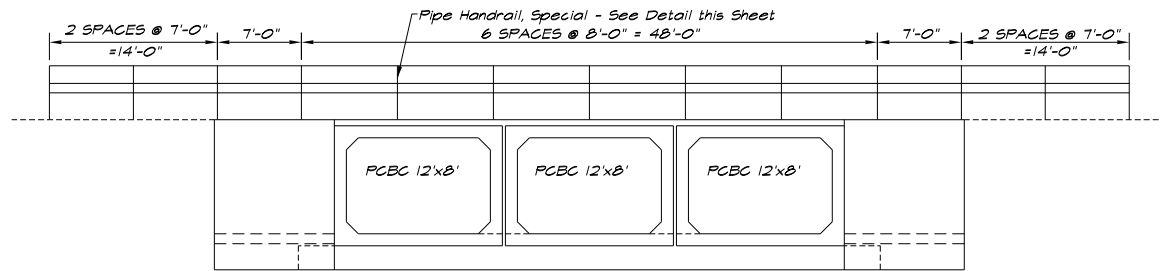
**CHASTAIN & ASSOCIATES LLC**  
CONSULTING ENGINEERS  
SERVICE | SOLUTIONS | COMMITMENT

**Decatur**  
- PARK DISTRICT -

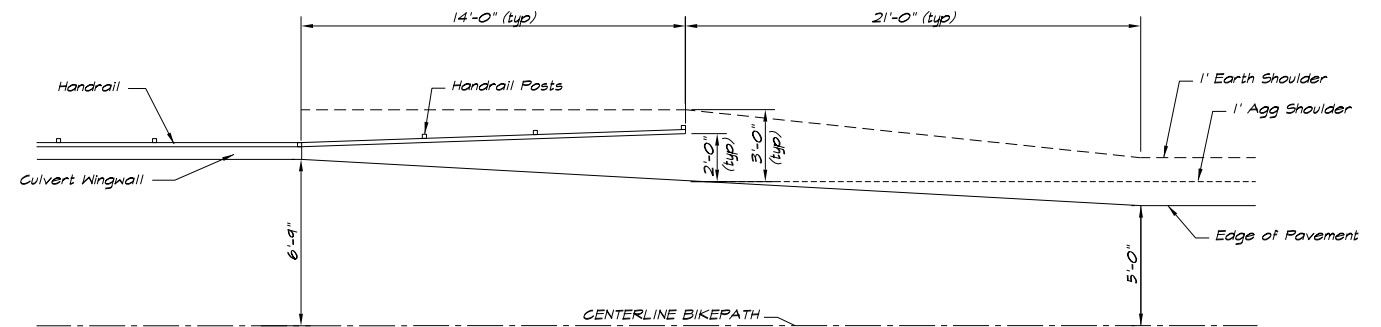
**STEVENS CREEK BIKEWAY - PHASE 2B**  
**CULVERT DETAILS STA. 703+61.70 (2B-1)**

SCALE: N/A SHEET 1 OF 2 SHEETS STA. N/A TO STA. N/A

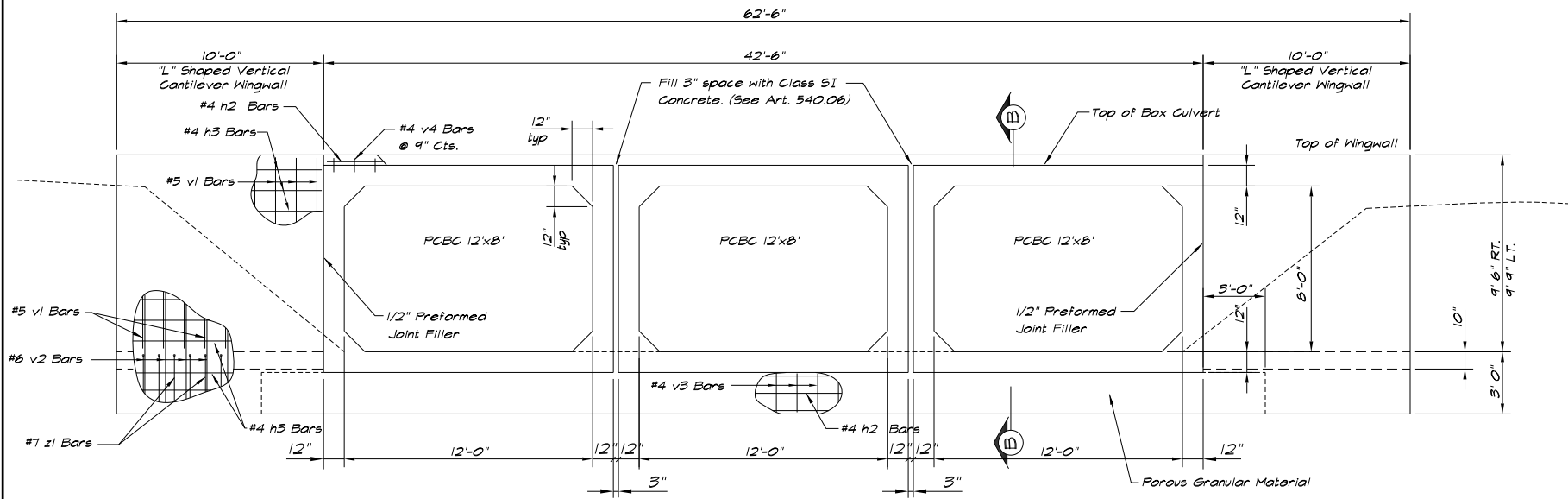
F.A. RTE.	SECTION	COUNTY	TOTAL SHEETS	SHEET NO.
	14-P4000-01-BT	MACON	94	39
	STRUCTURE NO. 058-P002	CONTRACT NO. 95892		
ILLINOIS FED. AID PROJECT				



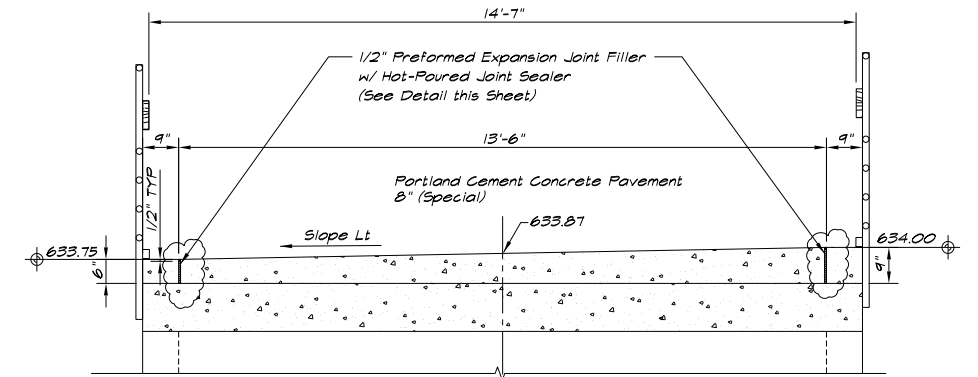
CULVERT HEADWALL SHOWING RAILING  
1/8" = 1' 0"



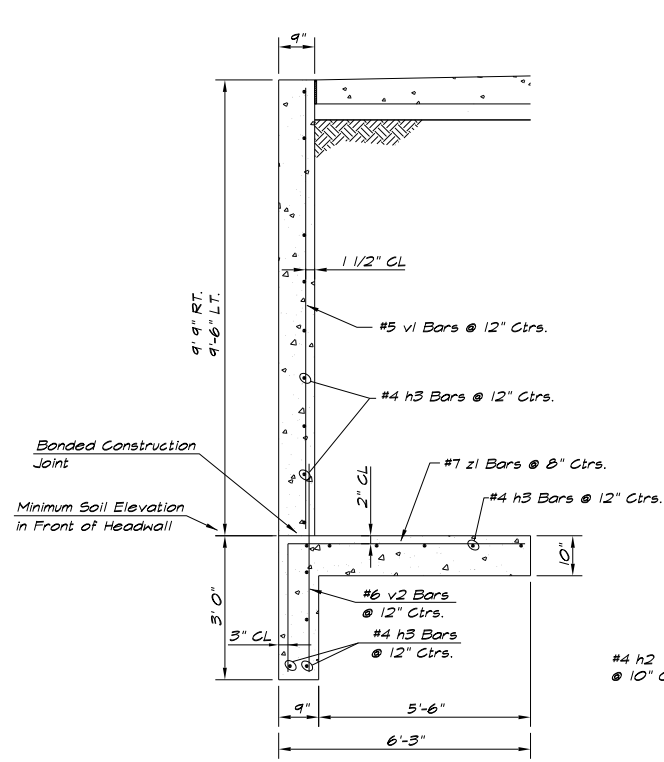
HANDRAIL TRANSITION DETAIL  
1/4" = 1' 0"



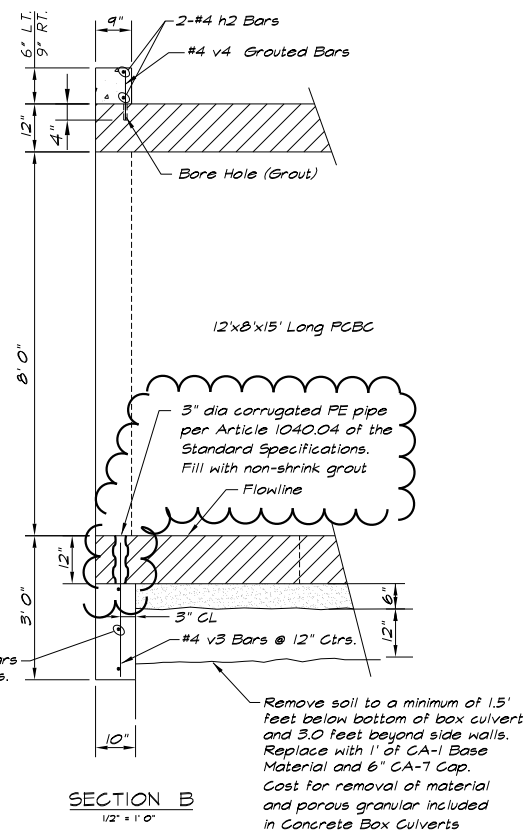
CULVERT HEADWALL  
1/4" = 1' 0"



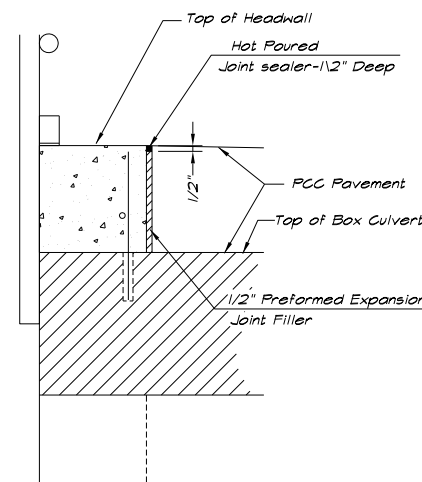
SECTION THRU TOP SLAB  
1/2" = 1' 0"



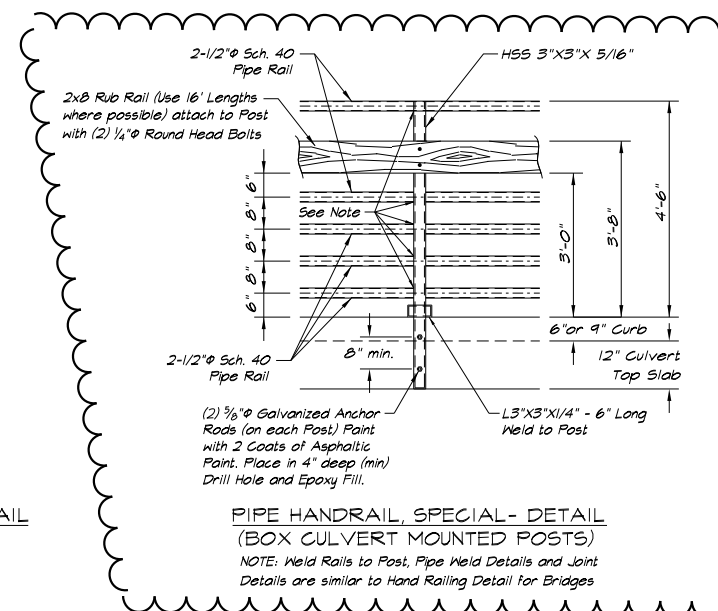
TYPICAL HEADWALL SECTION  
1/2" = 1' 0"



SECTION B  
1/2" = 1' 0"

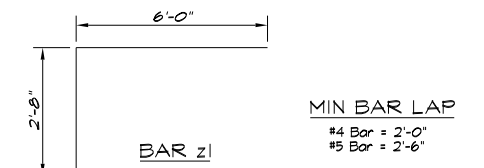


EXPANSION JOINT & SEALER DETAIL  
1 1/2" = 1' 0"



PIPE HANDRAIL, SPECIAL- DETAIL  
(BOX CULVERT MOUNTED POSTS)

NOTE: Weld Rails to Post, Pipe Weld Details and Joint Details are similar to Hand Railing Detail for Bridges



MIN BAR LAP  
#4 Bar = 2'-0"  
#5 Bar = 2'-6"

BILL OF MATERIAL  
(2 END SECTIONS)

Bar	No.	Size	Length	Shape	
h2(E)	20	#4	22'-3"	---	
h3(E)	80	#4	9'-9"	---	
v1(E)	64	#5	9'-3"	---	
v2(E)	64	#6	5'-6"	---	
v3(E)	26	#4	2'-8"	---	
w(E)	114	#4	0'-8"	---	
z1(E)	92	#7	3'-10"	---	
Concrete Box Culverts				Cu. Yd.	27.0
Reinforcement Bars, Epoxy Coated				Pound	2890

Notes: Reinforcement bars designated (E) shall be epoxy coated.

MODEL NAME = Default  
FILE NAME = I:\Subcontractor\Part-District\6648\_SCBW\_Phase2B\BOM\_07-24-2020\CADD\Civil\6648\_Sht-729-9410\_Box\_Culv\_Details.dgn

USER NAME = mfooster	DESIGNED - JMB	REVISED - MBF 2/5/2021
PLOT SCALE = 8.000000' / in.	DRAWN -	REVISED -
PLOT DATE = 2/25/2021	CHECKED -	REVISED -
	DATE - 1/21/2021	REVISED -

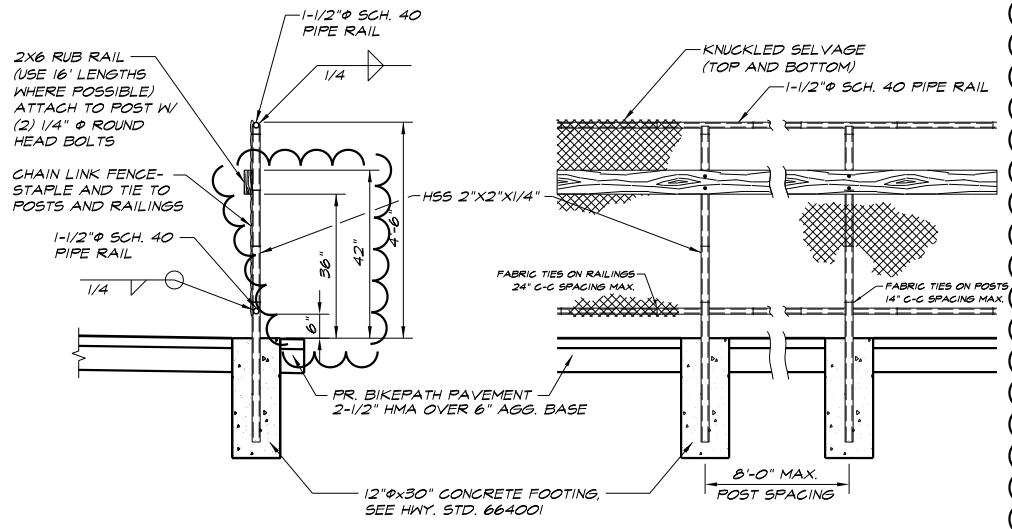
**CHASTAIN & ASSOCIATES LLC**  
CONSULTING ENGINEERS  
SERVICE | SOLUTIONS | COMMITMENT

**Decatur**  
- PARK DISTRICT -

**STEVENS CREEK BIKEWAY - PHASE 2B**  
**CULVERT DETAILS STA. 720 + 76.35 (2B-2)**

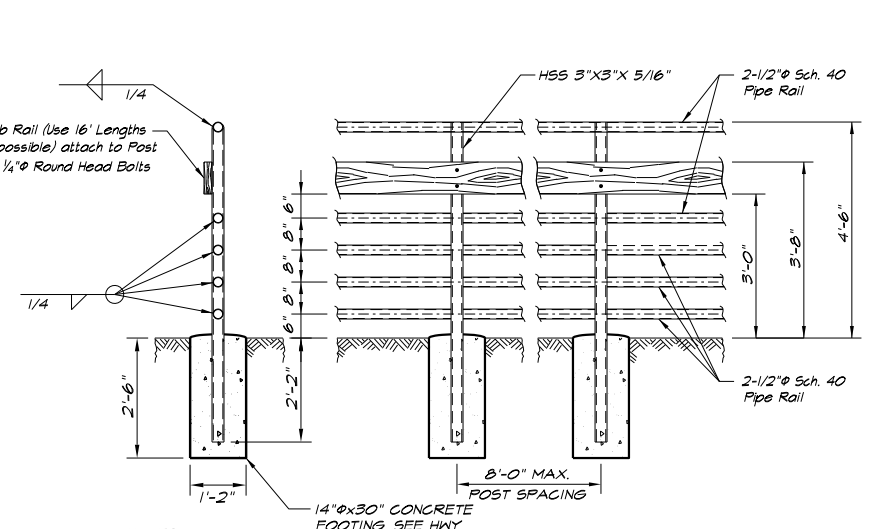
SCALE: N/A SHEET 2 OF 2 SHEETS STA. N/A TO STA. N/A

F.A. RTE.	SECTION	COUNTY	TOTAL SHEETS	SHEET NO.
	14-P4000-01-BT	MACON	94	40
	STRUCTURE NO. 058-P003	CONTRACT NO. 95892		
ILLINOIS FED. AID PROJECT				



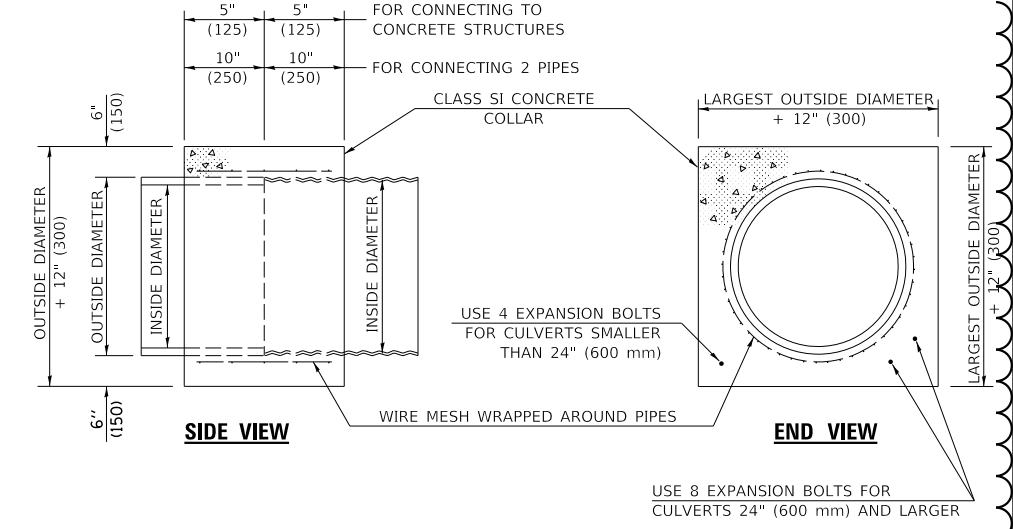
NOTES:  
 1. CHAIN LINK FENCING SHALL BE FURNISHED IN ACCORDANCE WITH ARTICLE 1006.27 (a) (1) d. "TYPE IV, CLASS B (POLYVINYL CHLORIDE (PVC)-COATED STEEL)." COLOR TO BE CHOSEN BY THE DECATUR PARK DISTRICT. COST OF FENCING SHALL BE INCLUDED WITH CHAIN LINK FENCE, 4' (SPECIAL).  
 2. THE RUB RAILS SHALL BE FURNISHED IN ACCORDANCE WITH ARTICLE 1007.03 STRUCTURAL TIMBER AND SHALL BE TREATED IN ACCORDANCE WITH ARTICLE 1007.12. MINIMUM LENGTH OF RAIL BOARDS SHALL BE 16 FEET. COST OF RUB RAIL SHALL BE INCLUDED WITH CHAIN LINK FENCE, 4' (SPECIAL).

**CHAIN LINK FENCE, 4' (SPECIAL)**  
 SEE HWY. STD. 664001 FOR ADDITIONAL DETAILS  
 1" = 2'



NOTES:  
 1. PIPE WELD DETAILS AND JOINT DETAILS ARE SIMILAR TO HAND RAILING DETAIL FOR BRIDGES.  
 2. THE RUB RAILS SHALL BE FURNISHED IN ACCORDANCE WITH ARTICLE 1007.03 STRUCTURAL TIMBER AND SHALL BE TREATED IN ACCORDANCE WITH ARTICLE 1007.12. MINIMUM LENGTH OF RAIL BOARDS SHALL BE 16 FEET. COST OF RUB RAIL SHALL BE INCLUDED WITH PIPE HANDRAIL, SPECIAL.  
 3. SEE BOX CULVERT DETAILS ON SHEET 39 FOR DETAILS OF CULVERT MOUNTED PIPE HANDRAIL POSTS.

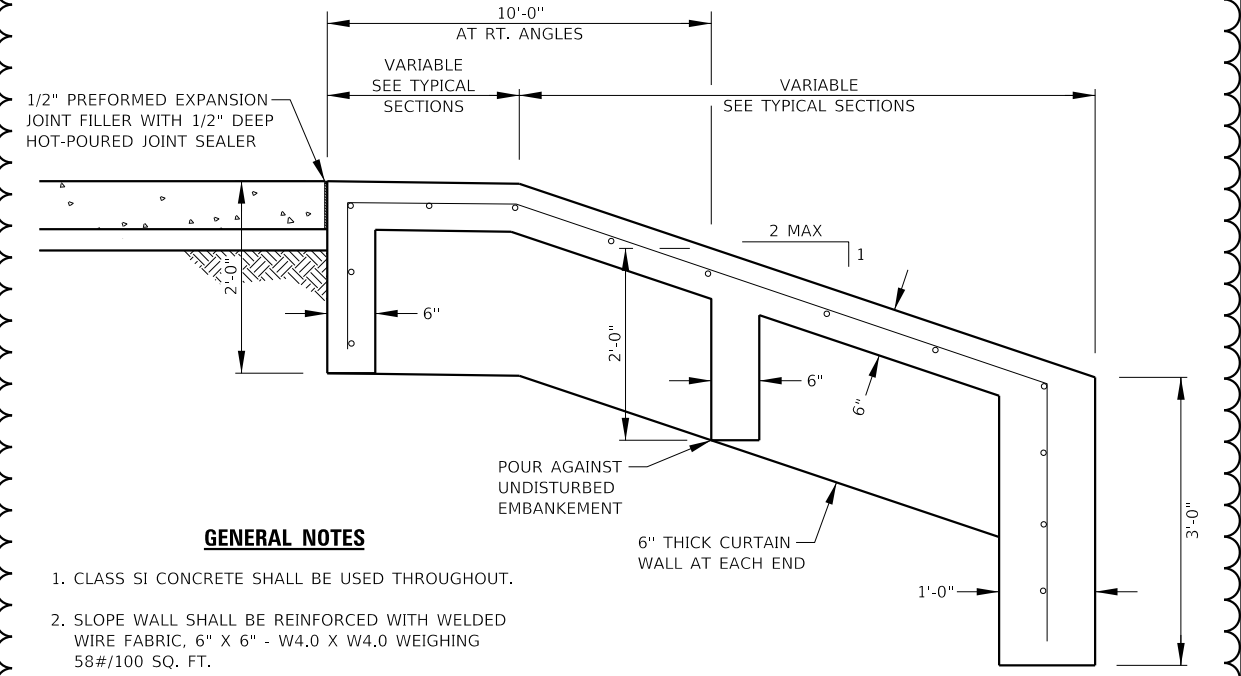
**PIPE HANDRAIL, SPECIAL**  
 GROUND MOUNTED POSTS  
 1" = 2'



QUANTITIES FOR CONCRETE PIPES	
INSIDE DIAMETER OF PIPE	ESTIMATED CLASS SI CONCRETE REQUIRED
INCH (mm)	20" (500 mm) WIDTH CU.YD. (m <sup>3</sup> )
4" (100)	0.14 (0.11)
6" (150)	0.16 (0.12)
8" (200)	0.19 (0.14)
10" (250)	0.22 (0.17)
12" (300)	0.25 (0.19)
15" (375)	0.30 (0.23)
18" (450)	0.35 (0.27)
24" (600)	0.45 (0.35)
30" (750)	0.57 (0.43)
36" (900)	0.69 (0.53)
42" (1050)	0.83 (0.63)
48" (1200)	0.97 (0.74)
54" (1350)	1.12 (0.86)
60" (1500)	1.28 (0.98)

- CLASS SI CONCRETE SHALL BE USED THROUGHOUT.
- WHEN CONCRETE COLLARS ARE USED TO CONNECT PIPES OF DIFFERENT OUTSIDE DIAMETERS, THE CONCRETE COLLAR SHALL BE FORMED USING THE LARGEST OUTSIDE DIAMETER (SEE END VIEW).
- THE WIRE MESH SHALL WEIGH NOT LESS THAN 54#/100 SQ. FT. (2.63 kg/m<sup>2</sup>).
- WHEN CONCRETE COLLARS ARE CONSTRUCTED ADJACENT TO AN EXISTING CONCRETE STRUCTURE (HEADWALLS, ETC.) EXPANSION BOLTS, SHALL BE USED AND WILL BE PAID FOR AT THE CONTRACT UNIT PRICE, EACH, FOR EXPANSION BOLTS OF THE SIZE SPECIFIED IN THE PLANS.
- CONCRETE COLLARS WILL BE PAID FOR SEPARATELY BUT SHALL BE INCLUDED IN THE CONTRACT UNIT PRICE PER FOOT FOR STORM SEWERS, TYPE 1, WATER MAIN QUALITY PIPE.

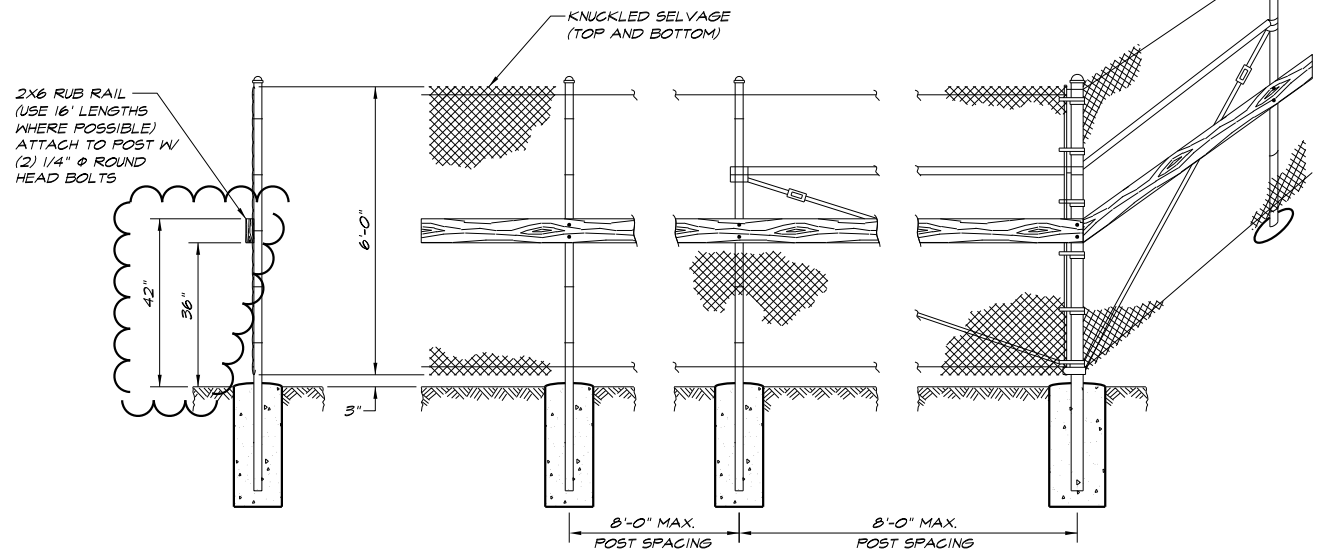
**CONCRETE COLLARS**



**GENERAL NOTES**

- CLASS SI CONCRETE SHALL BE USED THROUGHOUT.
- SLOPE WALL SHALL BE REINFORCED WITH WELDED WIRE FABRIC, 6" X 6" - W4.0 X W4.0 WEIGHING 58#/100 SQ. FT.

**6" CONCRETE SLOPE WALL DETAIL**



NOTES:  
 1. CHAIN LINK FENCING SHALL BE FURNISHED IN ACCORDANCE WITH ARTICLE 1006.27 (a) (1) d. "TYPE IV, CLASS B (POLYVINYL CHLORIDE (PVC)-COATED STEEL)." COLOR TO BE CHOSEN BY THE DECATUR PARK DISTRICT. COST OF FENCING SHALL BE INCLUDED WITH CHAIN LINK FENCE, 6' (SPECIAL).  
 2. THE RUB RAILS SHALL BE FURNISHED IN ACCORDANCE WITH ARTICLE 1007.03 STRUCTURAL TIMBER AND SHALL BE TREATED IN ACCORDANCE WITH ARTICLE 1007.12. MINIMUM LENGTH OF RAIL BOARDS SHALL BE 16 FEET. COST OF RUB RAIL SHALL BE INCLUDED WITH CHAIN LINK FENCE, 6' (SPECIAL).

**CHAIN LINK FENCE, 6' (SPECIAL)**  
 SEE HWY. STD. 664001 FOR ADDITIONAL DETAILS  
 1" = 2'

MODEL NAME = Default  
 FILE NAME = I:\Decatur\_Park\_District\6648\_Sch\047-049\_Standard\_Details\tdgn

USER NAME = mfooster	DESIGNED - MBF	REVISED - MBF 2/22/2021
PLOT SCALE = 2.000000' / in.	DRAWN -	REVISED -
PLOT DATE = 2/25/2021	CHECKED -	REVISED -
	DATE - 1/21/2021	REVISED -

**CHASTAIN & ASSOCIATES LLC**  
 CONSULTING ENGINEERS  
 SERVICE | SOLUTIONS | COMMITMENT

**Decatur**  
 PARK DISTRICT

**STEVENS CREEK BIKEWAY - PHASE 2B**  
 STANDARD DETAILS  
 SCALE: N/A SHEET 2 OF 3 SHEETS STA. N/A TO STA. N/A

F.A. RTE.	SECTION	COUNTY	TOTAL SHEETS	SHEET NO.
	14-P4000-01-BT	MACON	94	48
CONTRACT NO. 95892				
ILLINOIS FED. AID PROJECT				