

SUMMARY OF QUANTITIES			URBAN TOTAL QUANTITIES	CONSTRUCTION TYPE CODE				
CODE NO	ITEM	UNIT		0004 80% FED 20% STATE				
42101300	PROTECTIVE COAT	SO YD	40	40				
44000182	HOT-MIX ASPHALT SURFACE REMOVAL, 8"	SO YD	40	40				
50300255	CONCRETE SUPERSTRUCTURE	CU YD	13.3	13.3				
50800205	REINFORCEMENT BARS, EPOXY COATED	POUND	2770	2770				
50800515	BAR SPLICERS	EACH	36	36				
67000400	ENGINEER'S FIELD OFFICE, TYPE A	CAL MO	6	6				
67100100	MOBILIZATION	L SUM	1	1				
70106500	TEMPORARY BRIDGE TRAFFIC SIGNALS	EACH	1	1				
70106700	TEMPORARY RUMBLE STRIPS	EACH	6	6				
70300904	PAVEMENT MARKING TAPE, TYPE IV 4"	FOOT	3928	3928				
70300924	PAVEMENT MARKING TAPE, TYPE IV 24"	FOOT	24	24				
70400100	TEMPORARY CONCRETE BARRIER	FOOT	200	200				
* 78009004	MODIFIED URETHANE PAVEMENT MARKING - LINE 4"	FOOT	45	45				
70400200	RELOCATE TEMPORARY CONCRETE BARRIER	FOOT	200	200				
70600250	IMPACT ATTENUATORS, TEMPORARY (NON-REDIRECTIVE), TEST LEVEL 3	EACH	2	2				
70600250	IMPACT ATTENUATORS, RELOCATE (NON-REDIRECTIVE), TEST LEVEL 3	EACH	2	2				

SUMMARY OF QUANTITIES			URBAN TOTAL QUANTITIES	CONSTRUCTION TYPE CODE				
CODE NO	ITEM	UNIT		0004				
* 78000200	THERMOPLASTIC PAVEMENT MARKING - LINE 4"	FOOT	888	888				
78200011	BARRIER WALL REFLECTORS, TYPE C	EACH	32	32				
X0326276	TEMPORARY LIGHTING FOR SINGLE LANE STAGING	L SUM	1	1				
78300202	PAVEMENT MARKING REMOVAL - WATER BLASTING	SO FT	211	211				
X7010216	TRAFFIC CONTROL AND PROTECTION, (SPECIAL)	L SUM	1	1				
X7030005	TEMPORARY PAVEMENT MARKING REMOVAL	SO FT	1358	1358				
Z0073510	TEMPORARY TRAFFIC SIGNAL TIMING	EACH	1	1				
Z0030850	TEMPORARY INFORMATION SIGNING	SO FT	51.4	51.4				
70107025	CHANGEABLE MESSAGE SIGN	CAL DA	20	20				
78200006	GUARDRAIL REFLECTORS, TYPE B	EACH	28	28				
89000050	TEMPORARY BRIDGE TRAFFIC SIGNAL INSTALLATION	EACH	1	1				
70600251	IMPACT ATTENUATORS, TEMPORARY (NON-REDIRECTIVE, NARROW), TEST LEVEL 3	EACH	2	2				
70600352	IMPACT ATTENUATORS, RELOCATE (NON-REDIRECTIVE, NARROW), TEST LEVEL 3	EACH	2	2				

\* SPECIALTY ITEM

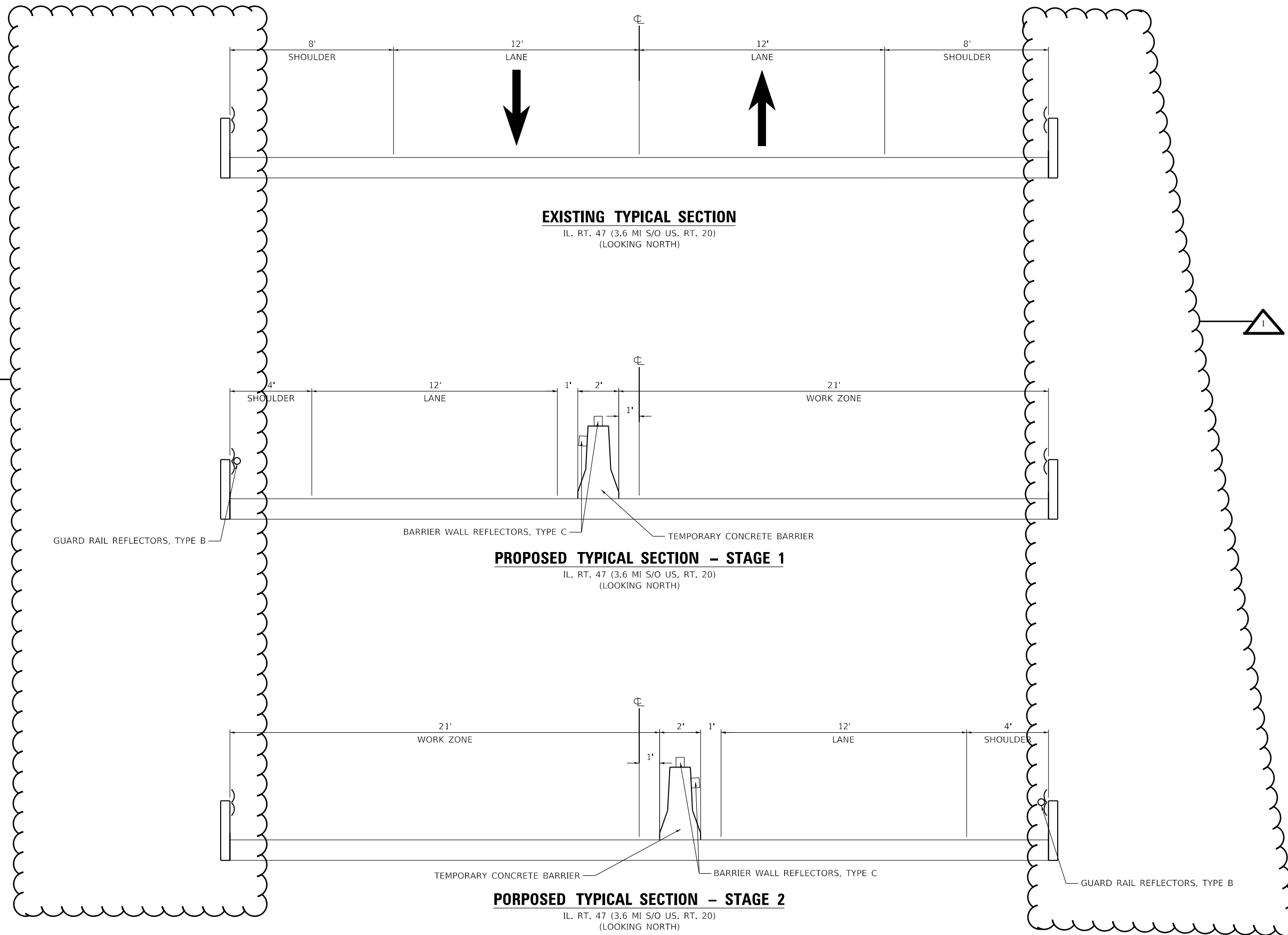
FILE NAME =	USER NAME = rdh/jp	DESIGNED -	REVISED - 2/19/2021 JR
pw:\planroom\dtd\111\roadsgov\PI001\Documents\VDOT	for\es\clstr\clt\NProjects\DI187\PCADData\Design\DI187\9-stk	DRAWN -	REVISED -
	PLOT SCALE = 100.0000' / 1" =	CHECKED -	REVISED -
	PLOT DATE = 10/16/2020	DATE -	REVISED -

STATE OF ILLINOIS  
DEPARTMENT OF TRANSPORTATION

US 14 OVER DITCH SO OAK GROVE ROAD  
SUMMARY OF QUANTITIES

SCALE: SHEET NO. 1 OF 1 SHEETS STA. TO STA.

REVISED SHEET 2/22/2021		REV-SEP	
F.A.P. RTE.	SECTION	COUNTY	TOTAL SHEET NO.
326	2020-241-T	KANE	8   3
			CONTRACT NO. 62N10
FED. ROAD DIST. NO. 1 ILLINOIS FED. AID PROJECT			



**EXISTING TYPICAL SECTION**

IL. RT. 47 (3.6 MI S/O US. RT. 20)  
(LOOKING NORTH)

**PROPOSED TYPICAL SECTION - STAGE 1**

IL. RT. 47 (3.6 MI S/O US. RT. 20)  
(LOOKING NORTH)

**PROPOSED TYPICAL SECTION - STAGE 2**

IL. RT. 47 (3.6 MI S/O US. RT. 20)  
(LOOKING NORTH)

REVISOR SYMBOL REVISED SHEET 2/22/2021

MODEL: Default  
 FILE: \\nas01.csc.com\work\pwwd\centhjp\0071636\10104721-sh-typical.dgn

USER NAME = rothjp	DESIGNED -	REVISED -	REVISED -
	DRAWN -	REVISED -	REVISED -
PLOT SCALE = 100,0000' / in.	CHECKED -	REVISED -	REVISED -
PLOT DATE = 2/19/2021	DATE -	REVISED -	REVISED -





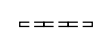
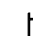
**STATE OF ILLINOIS  
DEPARTMENT OF TRANSPORTATION**

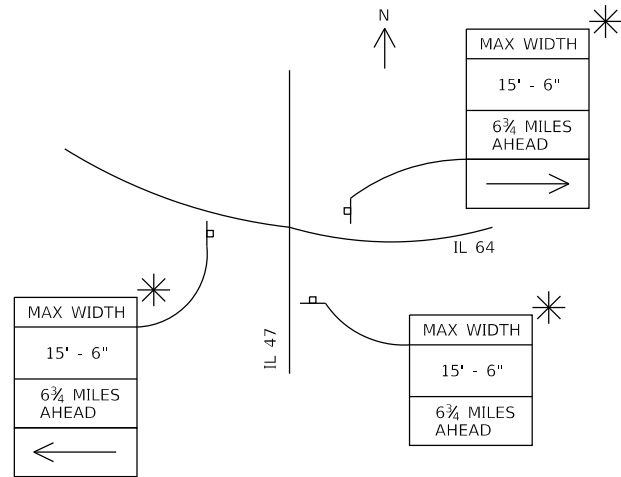
**TRAFFIC CONTROL TYPICAL SECTIONS  
IL. RT. 47 (3.6 MI S/O US. RT. 20)**

SCALE: SHEET 1 OF 1 SHEETS STA. TO STA.

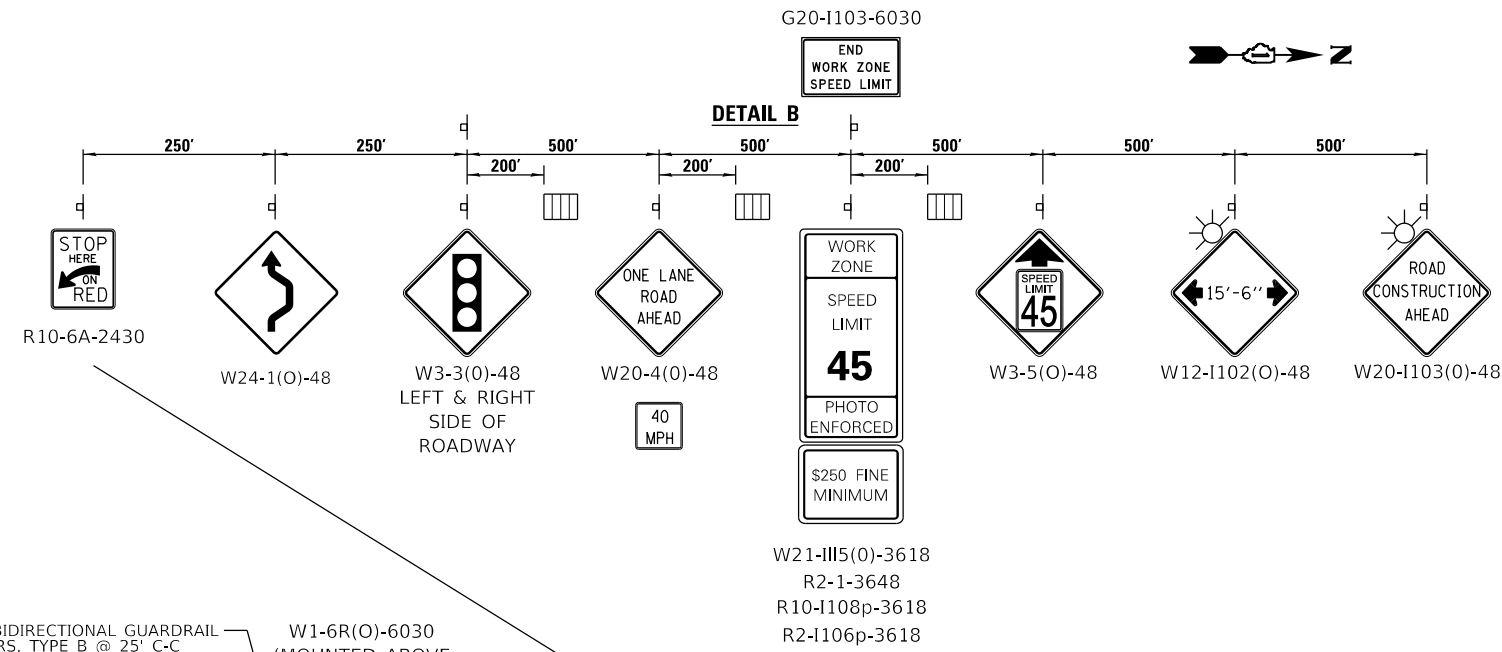
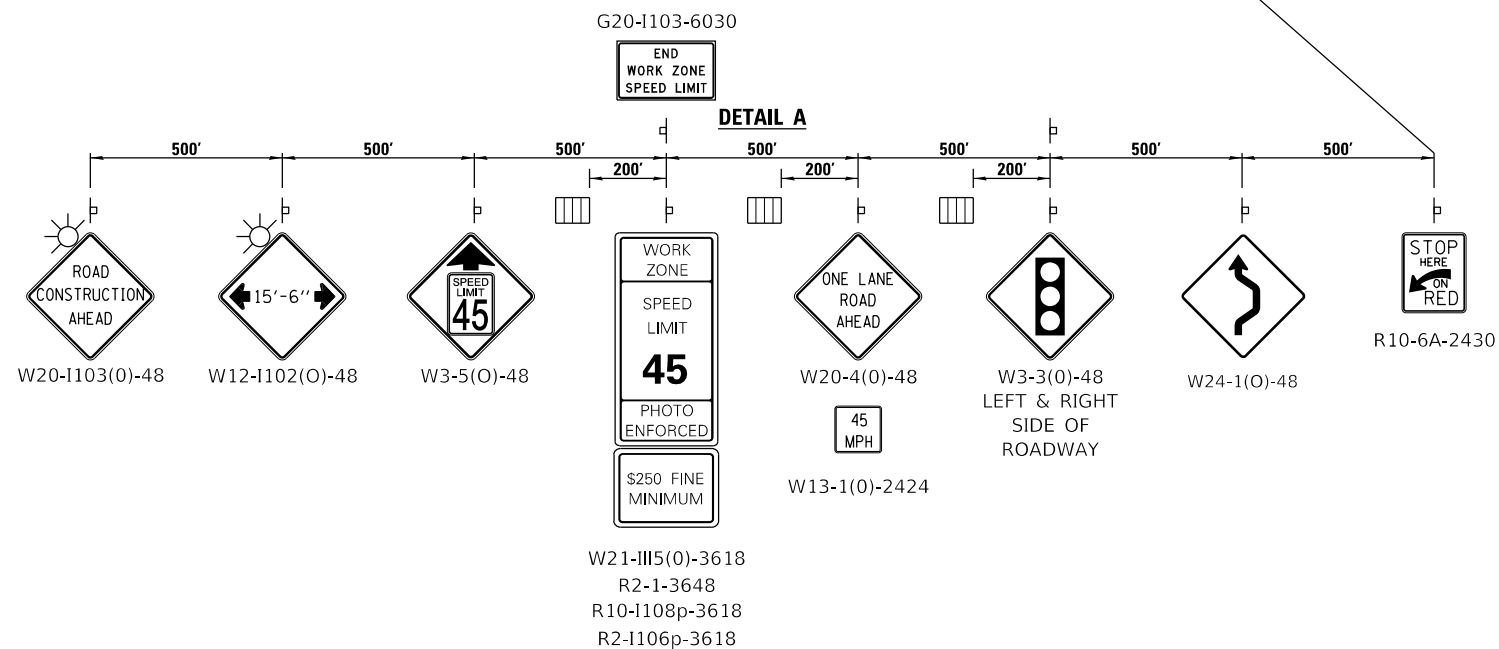
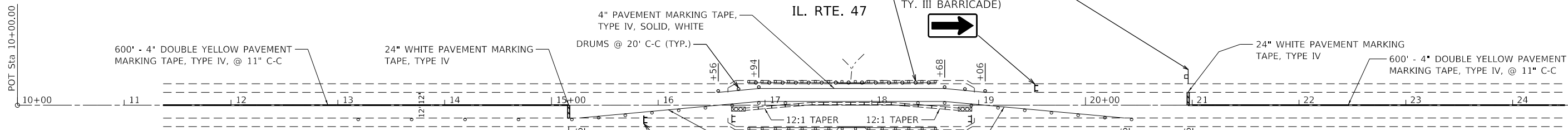
F.A.P. RTE.	SECTION	COUNTY	TOTAL SHEETS	SHEET NO.
326	2020-241-T	KANE	16	6
CONTRACT NO. 62N10				
ILLINOIS FED. AID PROJECT				

**SYMBOLS**

-  TEMPORARY IMPACT ATTENUATOR (NON-REDIRECTIVE), TEST LEVEL 3, NARROW
-  DRUM WITH STEADY BURN BI-DIRECTIONAL LIGHT
-  SIGN
-  TEMPORARY RUMBLE STRIP
-  TEMPORARY CONCRETE BARRIER WALL W/ DOUBLE SIDED TYPE C CRYSTAL MARKERS (SEE STDS. 704001 & 782006)
-  TYPE III BARRICADE



\* MAX WIDTH SIGNS SHALL REMAIN INSTALLED UNTIL THE COMPLETION OF TRAFFIC CONTROL PLAN STAGE II



\* MAX WIDTH SIGNS SHALL REMAIN INSTALLED UNTIL THE COMPLETION OF TRAFFIC CONTROL PLAN STAGE II

**NOTE:**  
REFER TO DISTRICT STANDARD BE-805 FOR THE LIGHTING AND SIGNAL LOCATIONS

**1** REVISED SHEET 2/22/2021

MODEL: Default  
FILE: 104721\_sht-plan.dgn  
WORKSPACE: 104721\_sht-plan.dgn

USER NAME = rothjp	DESIGNED -	REVISED - 1 2/19/2021 JR
	DRAWN -	REVISED -
PLOT SCALE = 100,0000' / in.	CHECKED -	REVISED -
PLOT DATE = 2/19/2021	DATE -	REVISED -

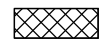


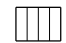
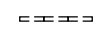
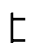
**STATE OF ILLINOIS  
DEPARTMENT OF TRANSPORTATION**

**TRAFFIC CONTROL PLAN - STAGE I  
IL. RT. 47 (3.6 MILES S/O US. RT. 20)**

SCALE: 1"=50' SHEET 1 OF 1 SHEETS STA. TO STA.

F.A.P. RTE. 326	SECTION 2020-241-T	COUNTY KANE	TOTAL SHEETS 16	SHEET NO. 7
CONTRACT NO. 62N10			ILLINOIS FED. AID PROJECT	

**SYMBOLS**

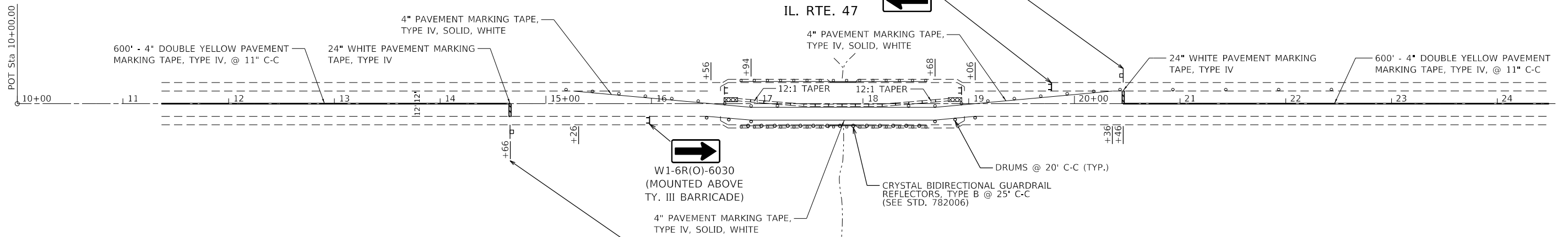
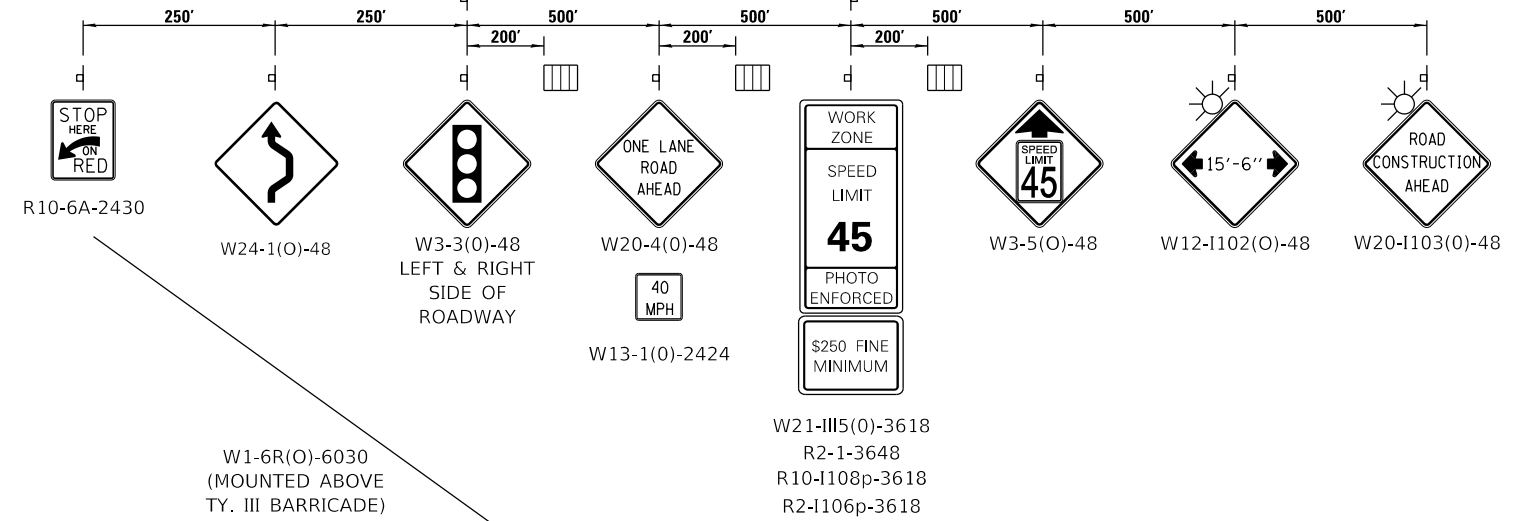
-  TEMPORARY IMPACT ATTENUATOR (NON-REDIRECTIVE), TEST LEVEL 3, NARROW
-  DRUM WITH STEADY BURN BI-DIRECTIONAL LIGHT
-  SIGN
-  TEMPORARY RUMBLE STRIP
-  TEMPORARY CONCRETE BARRIER WALL W/ DOUBLE SIDED TYPE C CRYSTAL MARKERS (SEE STDS. 704001 & 782006)
-  TYPE III BARRICADE

G20-1103-6030

END WORK ZONE SPEED LIMIT



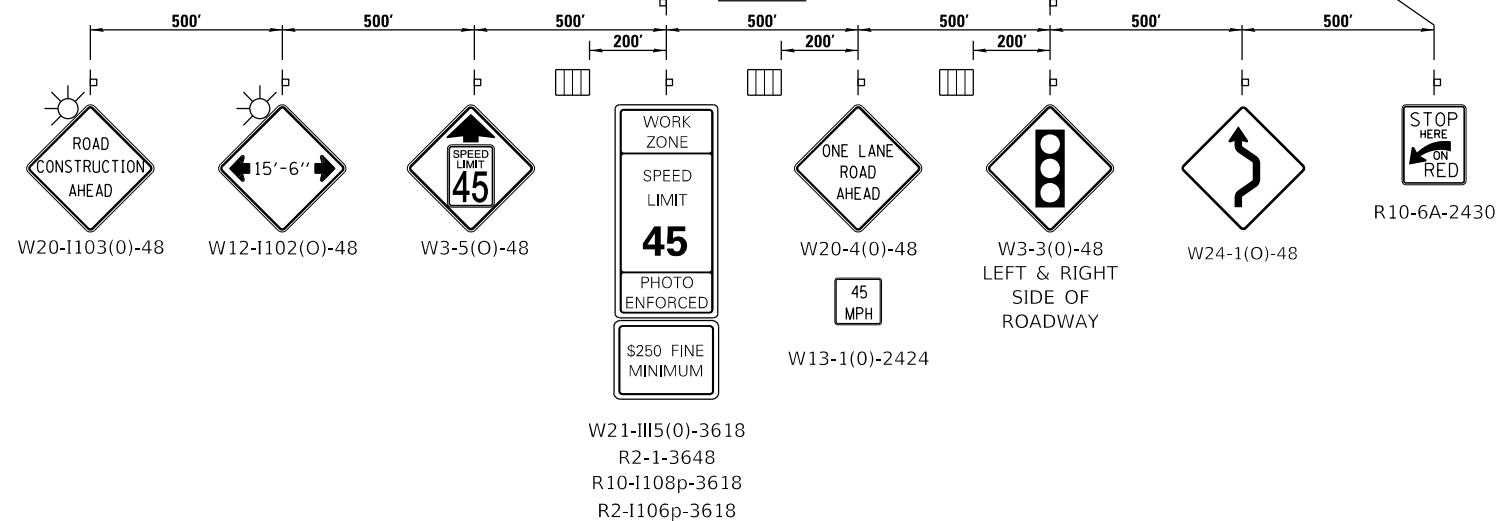
**DETAIL B**



G20-1103-6030

END WORK ZONE SPEED LIMIT

**DETAIL A**



**NOTE:**

REFER TO DISTRICT STANDARD BE-805 FOR THE LIGHTING AND SIGNAL LOCATIONS

REVISED SHEET 2/22/2021

STATE OF ILLINOIS  
DEPARTMENT OF TRANSPORTATION

TRAFFIC CONTROL PLAN - STAGE II  
IL. RT. 47 (3.6 MILES S/O US. RT. 20)

F.A.P. RTE.	SECTION	COUNTY	TOTAL SHEETS	SHEET NO.
326	2020-241-T	KANE	16	8
CONTRACT NO. 62N10				

SCALE: 1"=50' SHEET 1 OF 1 SHEETS STA. TO STA.

ILLINOIS FED. AID PROJECT

MODEL: Default FILE: \\nrcs\csc\work\p\shd\shd\shd\0071636\104721-shd-plan.dgn