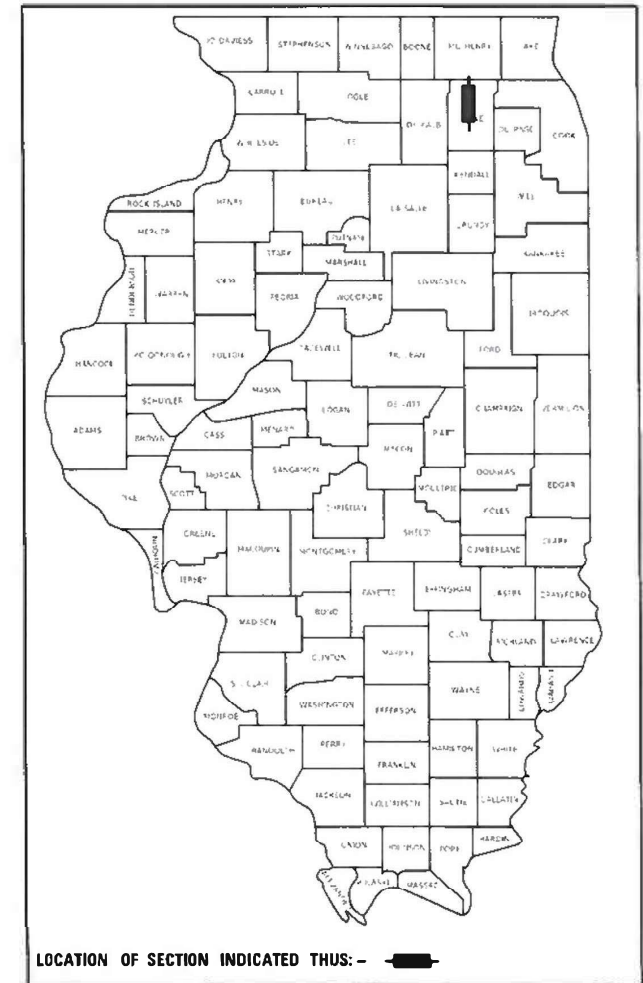


STATE OF ILLINOIS  
DEPARTMENT OF TRANSPORTATION

F.A.P. RTE.	SECTION	COUNTY	TOTAL SHEETS	SHEET NO.
326	2020-241-T	KANE	8	1
		ILLINOIS	CONTRACT NO. 62N10	

D-91-047-21



# PROPOSED HIGHWAY PLANS

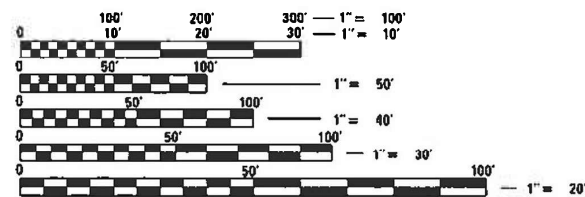
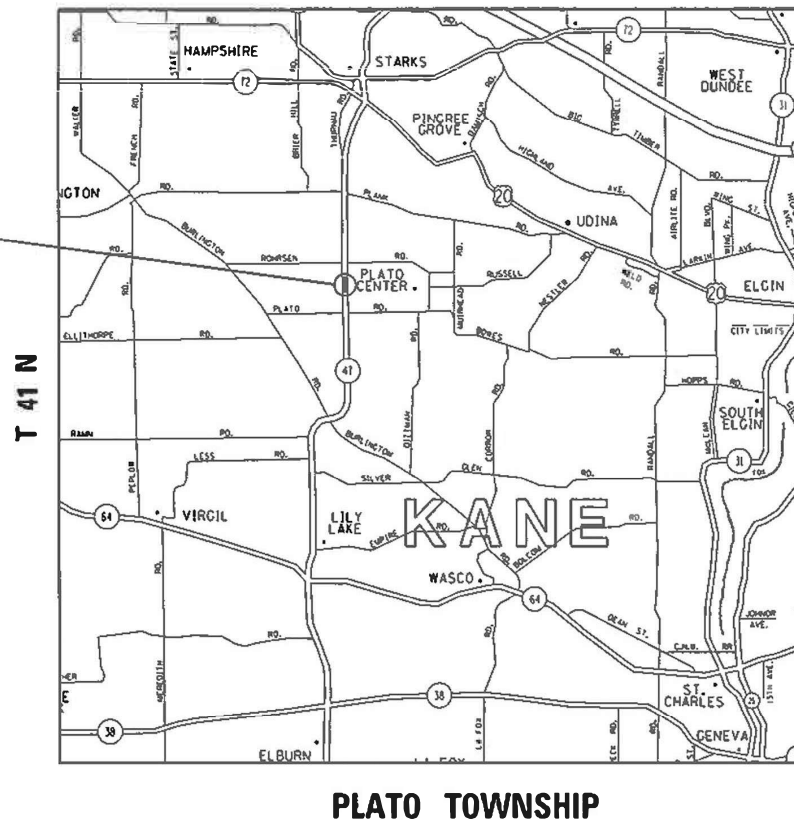
F.A.P. ROUTE 326: IL ROUTE 47  
OVER DITCH 3.6 MILES OF US ROUTE 20  
PROJECT: NHPP-TZFX(832)  
SECTION: 2020-241-T  
CULVERT REPAIR  
KANE COUNTY  
C-91-047-21  
R 7 E

FOR INDEX OF SHEETS, SEE SHEET NO. 2

**TRAFFIC DATA**  
EXISTING ADT = 8800 (2019)  
POSTED SPEED LIMIT = 55 MPH

THE IMPROVEMENT IS LOCATED IN  
THE PLATO TOWNSHIP

LOCATION OF  
IMPROVEMENT:  
SN 045-0229



FULL SIZE PLANS HAVE BEEN PREPARED USING STANDARD ENGINEERING SCALES. REDUCED SIZED PLANS WILL NOT CONFORM TO STANDARD SCALES. IN MAKING MEASUREMENTS ON REDUCED PLANS, THE ABOVE SCALES MAY BE USED.

J.U.L.I.E.  
JOINT UTILITY LOCATION INFORMATION FOR EXCAVATORS  
1-800-992-0123  
OR 811

PROJECT MANAGER: ALAIN MIDY (847) 221-3056

CONTRACT NO. 62N10

GROSS LENGTH = 15 FT. = 0.0030 MILE  
NET LENGTH = 15 FT. = 0.0030 MILE

STATE OF ILLINOIS  
DEPARTMENT OF TRANSPORTATION

SUBMITTED October 20, 2020

*Anthony J. [Signature]*  
REGIONAL ENGINEER

January 29, 2021

*[Signature]*  
ENGINEER OF DESIGN AND ENVIRONMENT

January 29, 2021

*[Signature]*  
DIRECTOR OF HIGHWAYS PROJECT IMPLEMENTATION

PRINTED BY THE AUTHORITY  
OF THE STATE OF ILLINOIS

**INDEX OF SHEETS**

SHEET NO.	DESCRIPTION
1	COVER SHEET
2	INDEX OF SHEETS, STANDARDS, AND GENERAL NOTES
3	SUMMARY OF QUANTITIES
4-5	PAVEMENT SLAB DETAILS
6	TRAFFIC CONTROL TYPICAL SECTIONS
7-8	TRAFFIC CONTROL PLAN
9	PAVEMENT MARKING PLAN
10	TEMPORARY LIGHT POLE DETAILS (BE-800)
11-13	TEMPORARY LIGHTING AND TRAFFIC SIGNALS FOR SINGLE LANE STAGING (BE-805)
14	TRAFFIC CONTROL AND PROTECTION FOR SIDE ROADS, INTERSECTIONS, AND DRIVEWAYS (TC-10)
15	DISTRICT ONE TYPICAL PAVEMENT MARKINGS (TC-13)
16	ARTERIAL ROAD INFORMATION SIGN (TC-22)

**HIGHWAY STANDARDS**

STANDARD NO.	DESCRIPTION
701001-02	OFF-RD OPERATIONS, 2L, 2W, MORE THAN 15' (4.5 m) AWAY
701006-05	OFF-RD OPERATIONS, 2L, 2W, 15' (4.5 m) TO 24" (600 mm) FROM PAVEMENT EDGE
701011-04	OFF-RD MOVING OPERATIONS, 2:, 2W, DAY ONLY
701201-05	LANE CLOSURE, 2L, 2W, DAY ONLY, FOR SPEEDS > 45 MPH
701301-04	LANE CLOSURE, 2L, 2W, SHORT TIME OPERATIONS
701311-03	LANE CLOSURE 2L, 2W, MOVING OPERATIONS - DAY ONLY
701321-18	LANE CLOSURE, 2L, 2W, BRIDGE REPAIR WITH BARRIER
701901-08	TRAFFIC CONTROL DEVICES

**GENERAL NOTES**

BEFORE STARTING ANY EXCAVATION, THE CONTRACTOR SHALL CALL J.U.L.I.E. AT (800) 892-0123 OR 811 FOR FIELD LOCATIONS OF BURIED ELECTRIC, TELEPHONE AND GAS UTILITIES. 48 HOUR NOTIFICATION IS REQUIRED.

THE CONTRACTOR SHALL COORDINATE CONSTRUCTION ACTIVITIES WITH UTILITY COMPANIES, AND THE PLATO TOWNSHIP.

PLAN DIMENSIONS AND DETAILS RELATIVE TO EXISTING PLANS ARE SUBJECT TO NOMINAL CONSTRUCTION VARIATIONS. THE CONTRACTOR SHALL FIELD VERIFY EXISTING DIMENSIONS AND DETAILS AFFECTING NEW CONSTRUCTION AND MAKE NECESSARY APPROVED ADJUSTMENTS PRIOR TO CONSTRUCTION OR ORDERING OF MATERIALS. SUCH VARIATIONS SHALL NOT BE CAUSE FOR ADDITIONAL COMPENSATION FOR A CHANGE IN SCOPE OF THE WORK, HOWEVER, THE CONTRACTOR WILL BE PAID FOR THE QUANTITY ACTUALLY FURNISHED BASED AT THE UNIT PRICE BID FOR THE WORK.

THE CONTRACTOR WILL NOT BE ALLOWED TO SET UP A YARD OR FIELD OFFICE ON STATE PROPERTY WITHOUT WRITTEN PERMISSION FROM THE DEPARTMENT.

ALL DAMAGE TO EXISTING PAVEMENT MARKINGS OR RAISED REFLECTIVE PAVEMENT MARKERS OUTSIDE THE REMOVAL LINE SHOWN ON THE PLANS SHALL BE REPLACED AT NO ADDITIONAL COST TO THE DEPARTMENT.

THE CONTRACTOR SHALL CONTACT THE DISTRICT ONE TRAFFIC CONTROL SUPERVISOR AT KALPANA.KANNAN-HOSADURGA@ILLINOIS.GOV A MINIMUM OF 72 HOURS IN ADVANCE OF BEGINNING WORK.

THE RESIDENT ENGINEER SHALL CONTACT WALTER CZARNY, IDOT'S AREA TRAFFIC FIELD ENGINEER VIA EMAIL AT WALTER.CZARNY@ILLINOIS.GOV A MINIMUM OF TWO (2) WEEKS PRIOR TO THE PLACEMENT OF PERMANENT PAVEMENT MARKINGS.

THESE PLANS HAVE BEEN PREPARED FROM NOTES RECEIVED FROM THE BUREAU OF MAINTENANCE.

THE CONTRACTOR SHALL BE REQUIRED TO PROVIDE ACCESS TO ABUTTING PROPERTY AT ALL TIMES DURING THE CONSTRUCTION OF THIS PROJECT.

DO NOT SCALE PLANS FOR CONSTRUCTION DIMENSIONS.

MODEL: Default  
FILE: \\blm1c1-pub\blm1room\dat\illinois.gov\PI\DOT\Documents\DOT\_Offices\District\_1\Projects\ID\04721\CADD\Drawn\Design\ID\04721-sh-generates.dgn

USER NAME = rothjp	DESIGNED -	REVISED -
	DRAWN -	REVISED -
PLOT SCALE = 100.0000 ' / in.	CHECKED -	REVISED -
PLOT DATE = 1/21/2021	DATE -	REVISED -

**STATE OF ILLINOIS  
DEPARTMENT OF TRANSPORTATION**

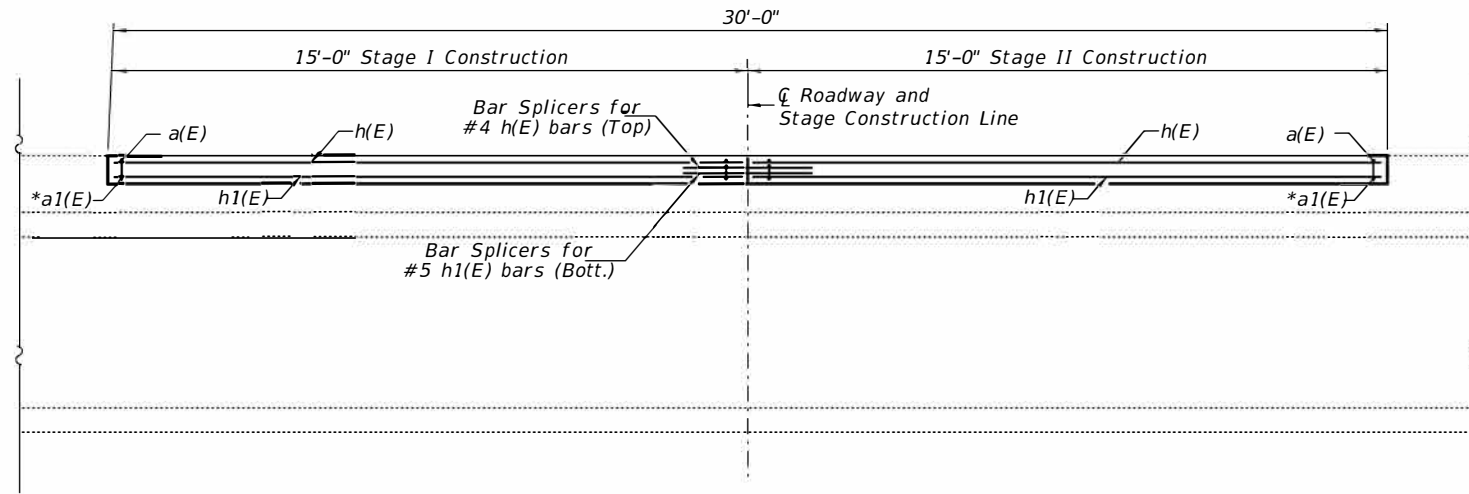
**INDEX OF SHEETS, STATE STANDARDS  
AND GENERAL NOTES**

SCALE: NONE SHEET 1 OF 1 SHEETS STA. TO STA.

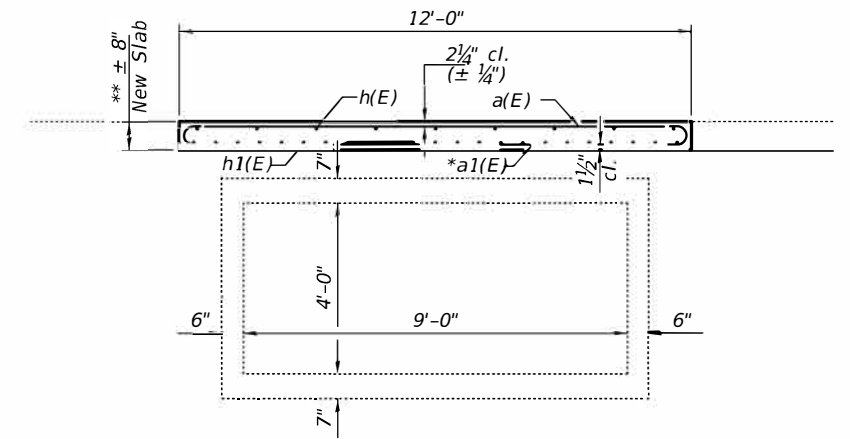
F.A.P. RTE.	SECTION	COUNTY	TOTAL SHEETS	SHEET NO.
326	2020-241-T	KANE	16	2
CONTRACT NO. 62N10			ILLINOIS FED. AID PROJECT	

SUMMARY OF QUANTITIES			URBAN TOTAL QUANTITIES	CONSTRUCTION TYPE CODE					* 0004 80% FED 20% STATE	SUMMARY OF QUANTITIES			URBAN TOTAL QUANTITIES	CONSTRUCTION TYPE CODE				
CODE NO	ITEM	UNIT		0004						CODE NO	ITEM	UNIT		0004				
42101300	PROTECTIVE COAT	SO YD	40	40					78000200	THERMOPLASTIC PAVEMENT MARKING - LINE 4"	FOOT	588	588					
44000182	HOT-MIX ASPHALT SURFACE REMOVAL, 8"	SO YD	40	40					78200011	BARRIER WALL REFLECTORS, TYPE C	EACH	32	32					
50300255	CONCRETE SUPERSTRUCTURE	CU YD	13.3	13.3					X0326276	TEMPORARY LIGHTING FOR SINGLE LANE STAGING	L SUM	1	1					
50800205	REINFORCEMENT BARS, EPOXY COATED	POUND	2770	2770					78300202	PAVEMENT MARKING REMOVAL - WATER BLASTING	SO FT	211	211					
50800515	BAR SPLICERS	EACH	36	36					X7010216	TRAFFIC CONTROL AND PROTECTION, (SPECIAL)	L SUM	1	1					
67000400	ENGINEER'S FIELD OFFICE, TYPE A	CAL MO	6	6					X7030005	TEMPORARY PAVEMENT MARKING REMOVAL	SO FT	558	558					
67100100	MOBILIZATION	L SUM	1	1					Z0073510	TEMPORARY TRAFFIC SIGNAL TIMING	EACH	1	1					
70106500	TEMPORARY BRIDGE TRAFFIC SIGNALS	EACH	1	1					Z0030850	TEMPORARY INFORMATION SIGNING	SQ FT	51.4	51.4					
70106700	TEMPORARY RUMBLE STRIPS	EACH	6	6														
70300904	PAVEMENT MARKING TAPE, TYPE IV 4"	FOOT	1528	1528														
70300924	PAVEMENT MARKING TAPE, TYPE IV 24"	FOOT	24	24														
70400100	TEMPORARY CONCRETE BARRIER	FOOT	200	200														
* 78009004	MODIFIED URETHANE PAVEMENT MARKING - LINE 4"	FOOT	45	45														
70400200	RELOCATE TEMPORARY CONCRETE BARRIER	FOOT	200	200														
70600250	IMPACT ATTENUATORS, TEMPORARY (NON-REDIRECTIVE), TEST LEVEL 3	EACH	2	2														
70600250	IMPACT ATTENUATORS, RELOCATE (NON-REDIRECTIVE), TEST LEVEL 3	EACH	2	2														
* SPECIALTY ITEM																		

REV-SEP



**LONGITUDINAL SECTION**



**SECTION THRU BOX**

- \* Tilt hook of a1(E) bars if necessary to maintain clearance.
- \*\* Adjust thickness to match top of existing roadway surface. Place top of slab to match existing crown of roadway.

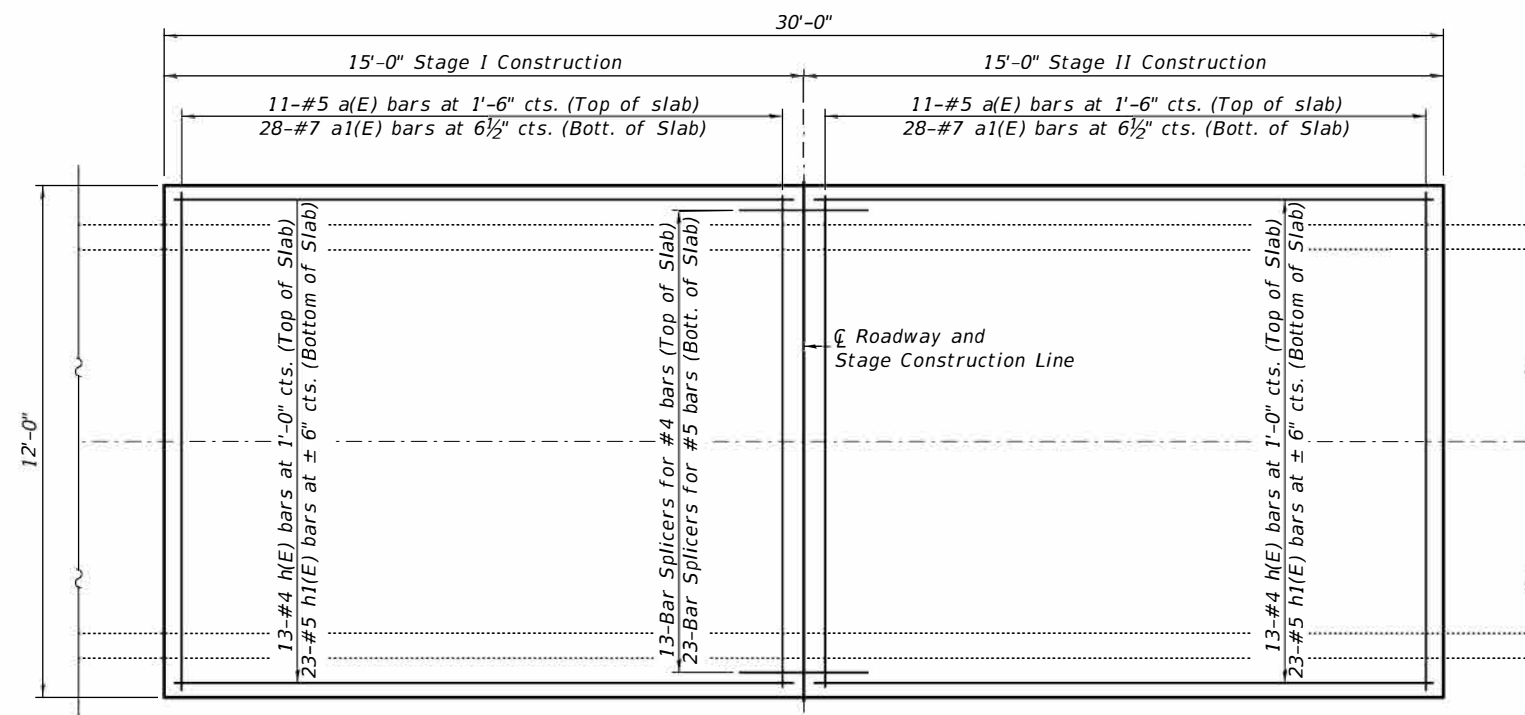
**GENERAL NOTES**

Plan dimensions and details relative to existing plans are subject to routine variations. The Contractor shall field verify existing dimensions and details affecting new construction and make necessary approved adjustments prior to construction or ordering of materials. Such variations shall not be cause for additional compensation for a change in scope of the work, however, the Contractor will be paid for the quantity actually furnished based upon the unit price bid for the work.

Reinforcement bars shall conform to the requirements of ASTM A 706 Gr 60. See Special Provisions.

Reinforcement bars designated (E) shall be epoxy coated.

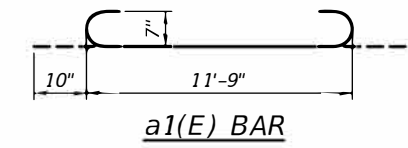
The deck surface shall have its final finish tined according to Article 420.09(e)(1) of the Standard Specifications. Cost included with Concrete Superstructure.



**PLAN**

**BILL OF MATERIAL**

Bar	No.	Size	Length	Shape	
a(E)	22	#5	11'-9"	—	
a1(E)	56	#7	13'-5"	U	
h(E)	26	#4	14'-9"	—	
h1(E)	46	#5	14'-9"	—	
Bar Splicers				Each	36
Hot-Mix Asphalt Surface Removal				Sq. Yd.	40
Reinforcement Bars, Epoxy Coated				Pound	2770
Concrete Superstructure				Cu. Yd.	13.3
Protective Coat				Sq. Yd.	40

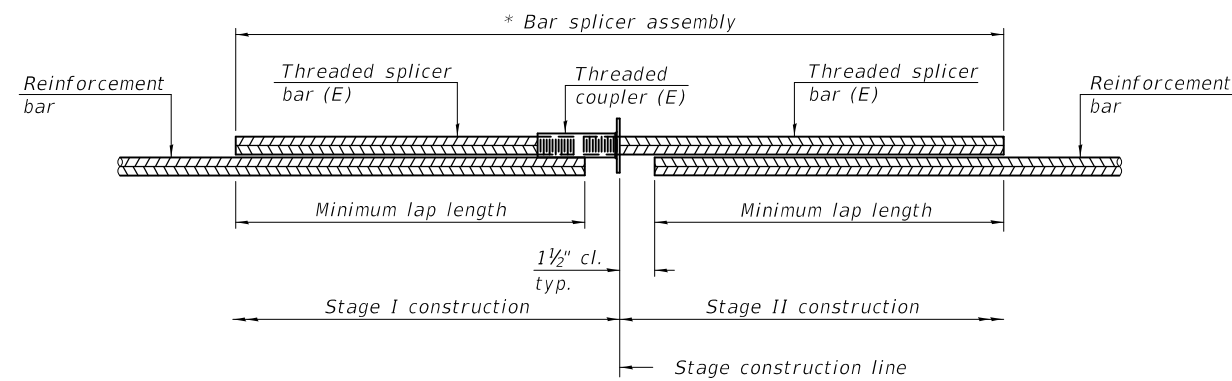


**DESIGN STRESSES**

FIELD UNITS  
 $f'c = 3,500$  psi  
 $f_y = 60,000$  psi (Reinf.)



EXPIRES 11-30-2022

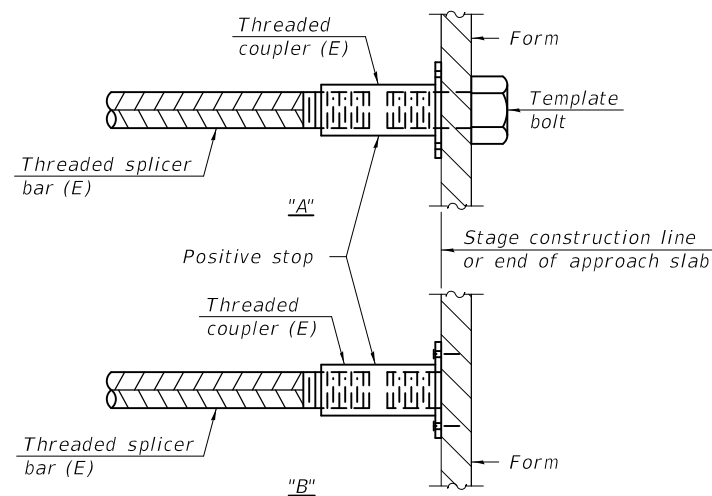


**STANDARD BAR SPLICER ASSEMBLY PLAN**  
 (All components shall be provided from one supplier)

Threaded splicer bar length = min. lap length + 1 1/2" + thread length

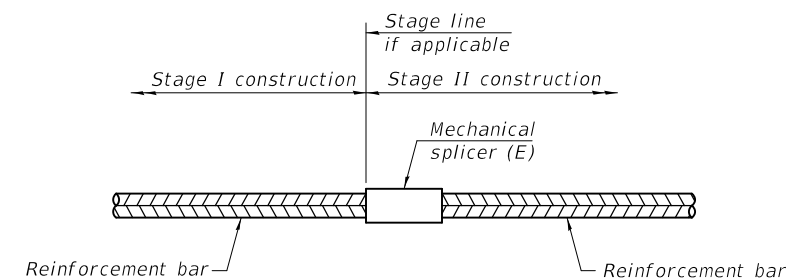
\* Epoxy not required on Bar Splicer Assembly components used in conjunction with black bars.

Location	Bar size	No. assemblies required	Minimum lap length
Top of slab	#4	13	2'-7"
Bott. of slab	#5	23	3'-2"



**INSTALLATION AND SETTING METHODS**

"A" : Set bar splicer assembly by means of a template bolt.  
 "B" : Set bar splicer assembly by nailing to wood forms or cementing to steel forms.  
 (E) : Indicates epoxy coating.



**STANDARD MECHANICAL SPLICER**

Location	Bar size	No. assemblies required

Notes:  
 Splicer bars shall be deformed with threaded ends and have a minimum 60 ksi yield strength.  
 All reinforcement shall be lapped and tied to the splicer bars.  
 Bar splicer assemblies shall be epoxy coated according to the requirements for reinforcement bars. See Section 508 of the Standard Specifications.  
 See approved list of bar splicer assemblies and mechanical splicers for alternatives.

BSD-1

1-1-2020

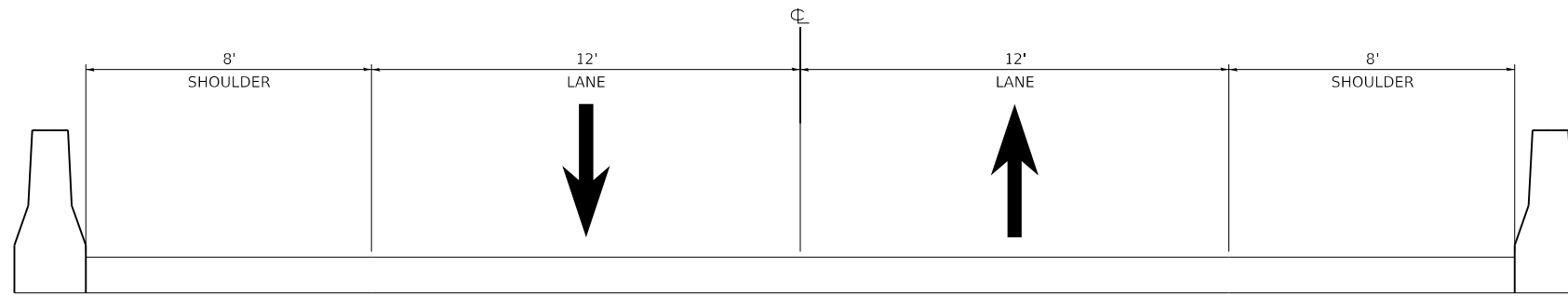
DESIGNED - VHV	EXAMINED	DATE - DECEMBER 02, 2020
CHECKED - ATH	<i>Timothy A. ...</i> ENGINEER OF STRUCTURAL SERVICES	REVISED -
DRAWN - Jim Ostermann	PASSED	REVISED -
CHECKED - VHV ATH	<i>Carl ...</i> ENGINEER OF BRIDGES AND STRUCTURES	

STATE OF ILLINOIS  
 DEPARTMENT OF TRANSPORTATION

BAR SPLICER ASSEMBLY AND MECHANICAL SPLICER DETAILS  
 SN 045-0229

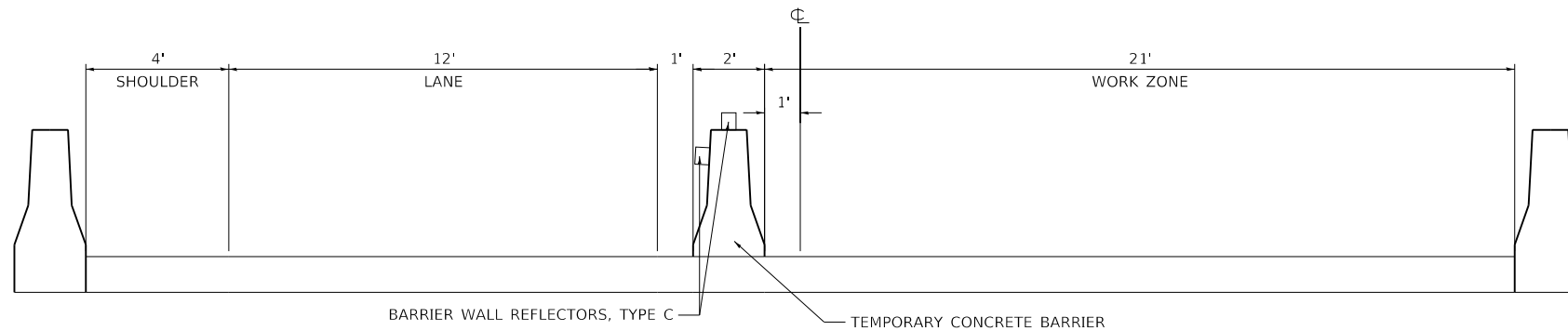
SHEET NO. 2 OF 2 SHEETS

F.A.P. RTE. 326	SECTION	COUNTY	TOTAL SHEETS	SHEET NO.
		KANE	8	5
CONTRACT NO. 62N10				
ILLINOIS FED. AID PROJECT				



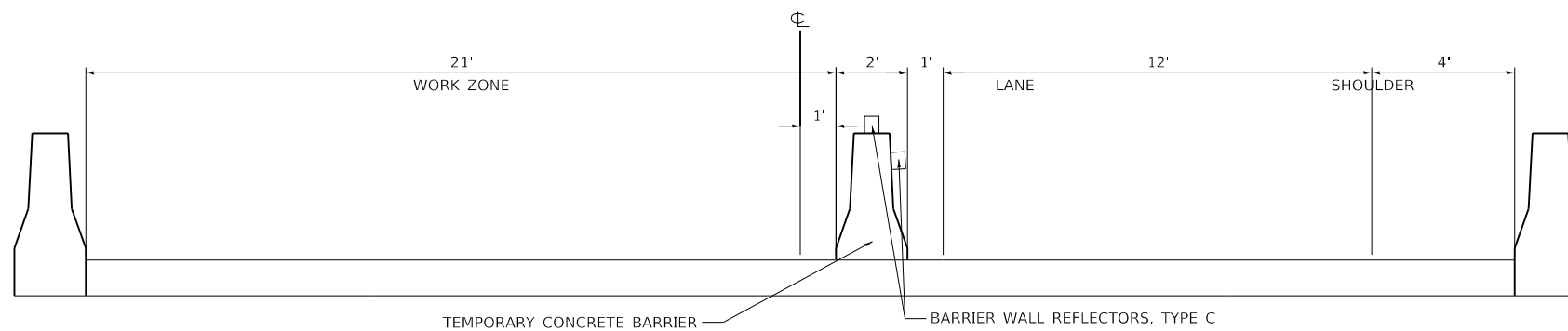
**EXISTING TYPICAL SECTION**

IL. RT. 47 (3.6 MI S/O US. RT. 20)  
(LOOKING NORTH)



**PROPOSED TYPICAL SECTION - STAGE 1**

IL. RT. 47 (3.6 MI S/O US. RT. 20)  
(LOOKING NORTH)



**PROPOSED TYPICAL SECTION - STAGE 2**

IL. RT. 47 (3.6 MI S/O US. RT. 20)  
(LOOKING NORTH)

MODEL: Default  
 FILE: Model - Traffic Control Typical Sections - I:\Projects\104721\CADD\Drawings\DOT - Offices\Drawings\104721-Sub-Typical.dgn

USER NAME = rothjp	DESIGNED -	REVISED -
	DRAWN -	REVISED -
PLOT SCALE = 100.0000' / in.	CHECKED -	REVISED -
PLOT DATE = 1/21/2021	DATE -	REVISED -







**STATE OF ILLINOIS  
DEPARTMENT OF TRANSPORTATION**

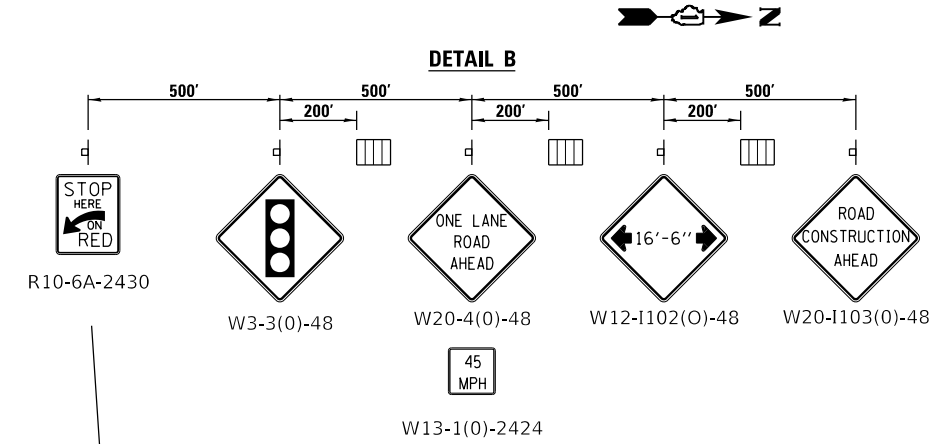
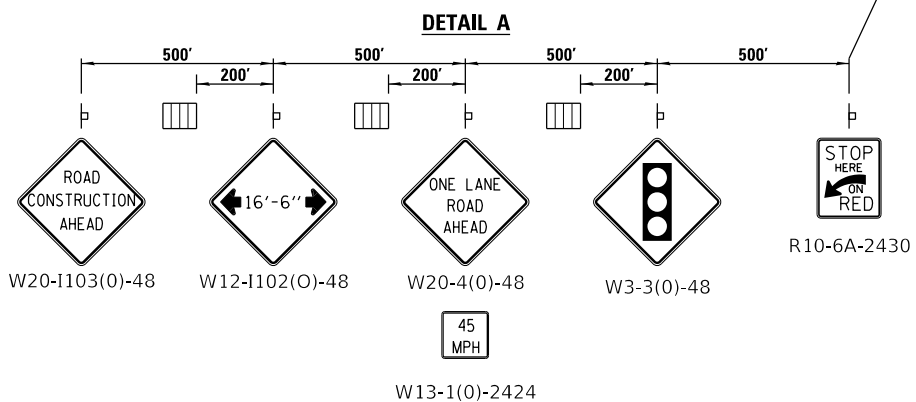
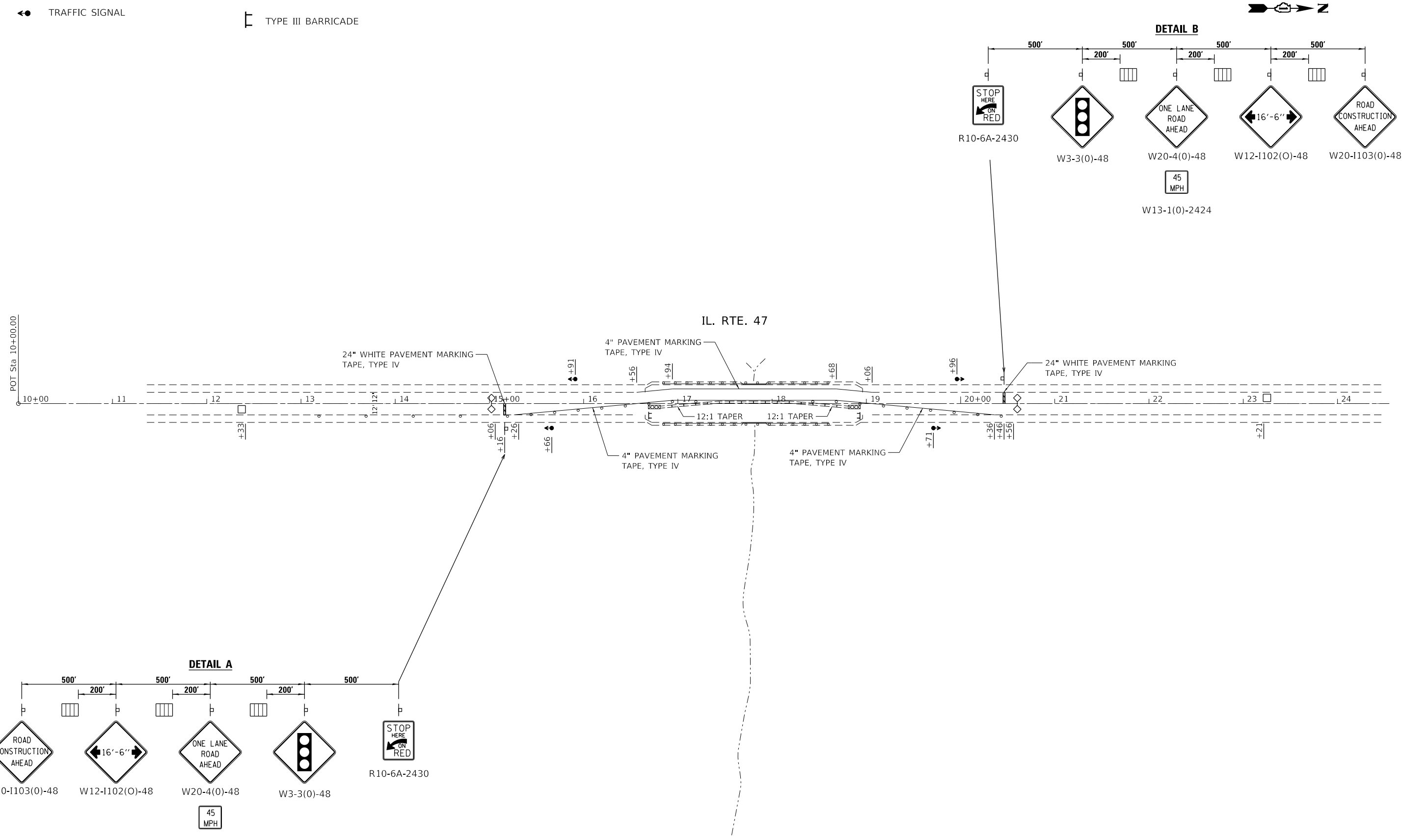
**TRAFFIC CONTROL TYPICAL SECTIONS  
IL. RT. 47 (3.6 MI S/O US. RT. 20)**

SCALE: SHEET 1 OF 1 SHEETS STA. TO STA.

F.A.P. RTE.	SECTION	COUNTY	TOTAL SHEETS	SHEET NO.
326	2020-241-T	KANE	16	6
CONTRACT NO. 62N10				
ILLINOIS FED. AID PROJECT				

**SYMBOLS**

-  IMPACT ATTENUATOR
-  SIGN
-  TRAFFIC SIGNAL
-  DRUM WITH STEADY BURN BI-DIRECTIONAL LIGHT
-  TEMPORARY RUMBLE STRIP
-  TYPE III BARRICADE



MODEL: Default  
 FILE: Model: Project\Documents\DOT - Office\Bartlett - 1\Projects\104721\CADD\Drawings\104721-Sub-Plan.dgn






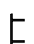
USER NAME = rothjp	DESIGNED -	REVISED -
PLOT SCALE = 100,0000' / in.	DRAWN -	REVISED -
PLOT DATE = 1/21/2021	CHECKED -	REVISED -
	DATE -	REVISED -

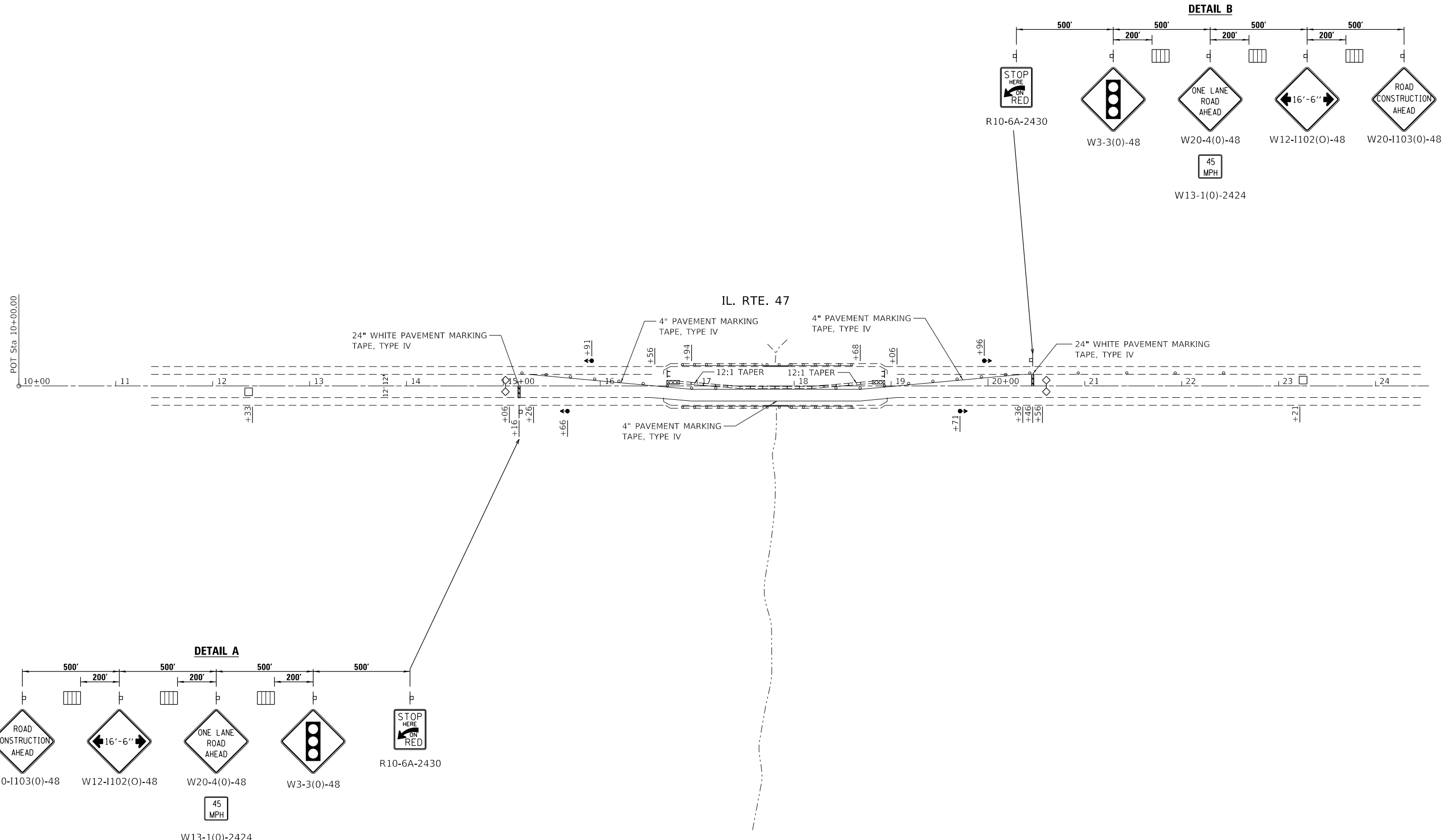
**STATE OF ILLINOIS  
DEPARTMENT OF TRANSPORTATION**

<b>TRAFFIC CONTROL PLAN - STAGE I</b>	
<b>IL. RT. 47 (3.6 MILES S/O US. RT. 20)</b>	
SCALE: 1"=50'	SHEET 1 OF 1 SHEETS STA. TO STA.

F.A.P. RTE.	SECTION	COUNTY	TOTAL SHEETS	SHEET NO.
326	2020-241-T	KANE	16	7
CONTRACT NO. 62N10				
ILLINOIS FED. AID PROJECT				

**SYMBOLS**

-  IMPACT ATTENUATOR
-  SIGN
-  TRAFFIC SIGNAL
-  DRUM WITH STEADY BURN BI-DIRECTIONAL LIGHT
-  TEMPORARY RUMBLE STRIP
-  TYPE III BARRICADE



MODEL: Default  
 FILE: \\blm1c01.pw.state.il.us\dot\Documents\DOT\_Offices\blm1c01\Projects\104721\CADDData\Design\104721-sh-rl-bn.dgn

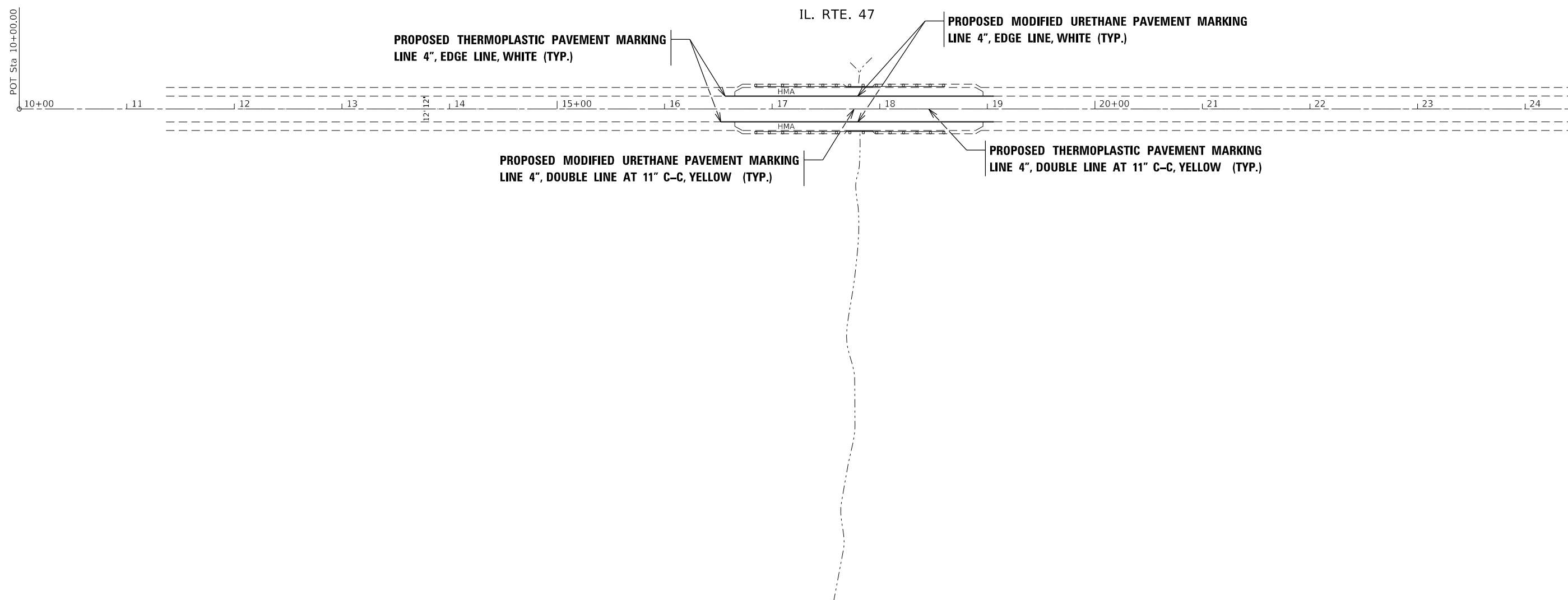
USER NAME = rothjp	DESIGNED -	REVISED -
	DRAWN -	REVISED -
PLOT SCALE = 100,0000' / in.	CHECKED -	REVISED -
PLOT DATE = 1/21/2021	DATE -	REVISED -

**STATE OF ILLINOIS  
DEPARTMENT OF TRANSPORTATION**

<b>TRAFFIC CONTROL PLAN - STAGE II</b>	
<b>IL. RT. 47 (3.6 MILES S/O US. RT. 20)</b>	
SCALE: 1"=50'	SHEET 1 OF 1 SHEETS STA. TO STA.

F.A.P. RTE. 326	SECTION 2020-241-T	COUNTY KANE	TOTAL SHEETS 16	SHEET NO. 8
ILLINOIS FED. AID PROJECT			CONTRACT NO. 62N10	





MODEL: Default  
 FILE: h:\m\c\_63\p\planroom.dwg  
 PROJECT: I:\projects\104721\CADD\Drawings\DOT\_Offices\Drawings\1\Project\104721\CADD\Drawings\DOT\_Offices\Drawings\1\Project\104721\p\plan.dwg

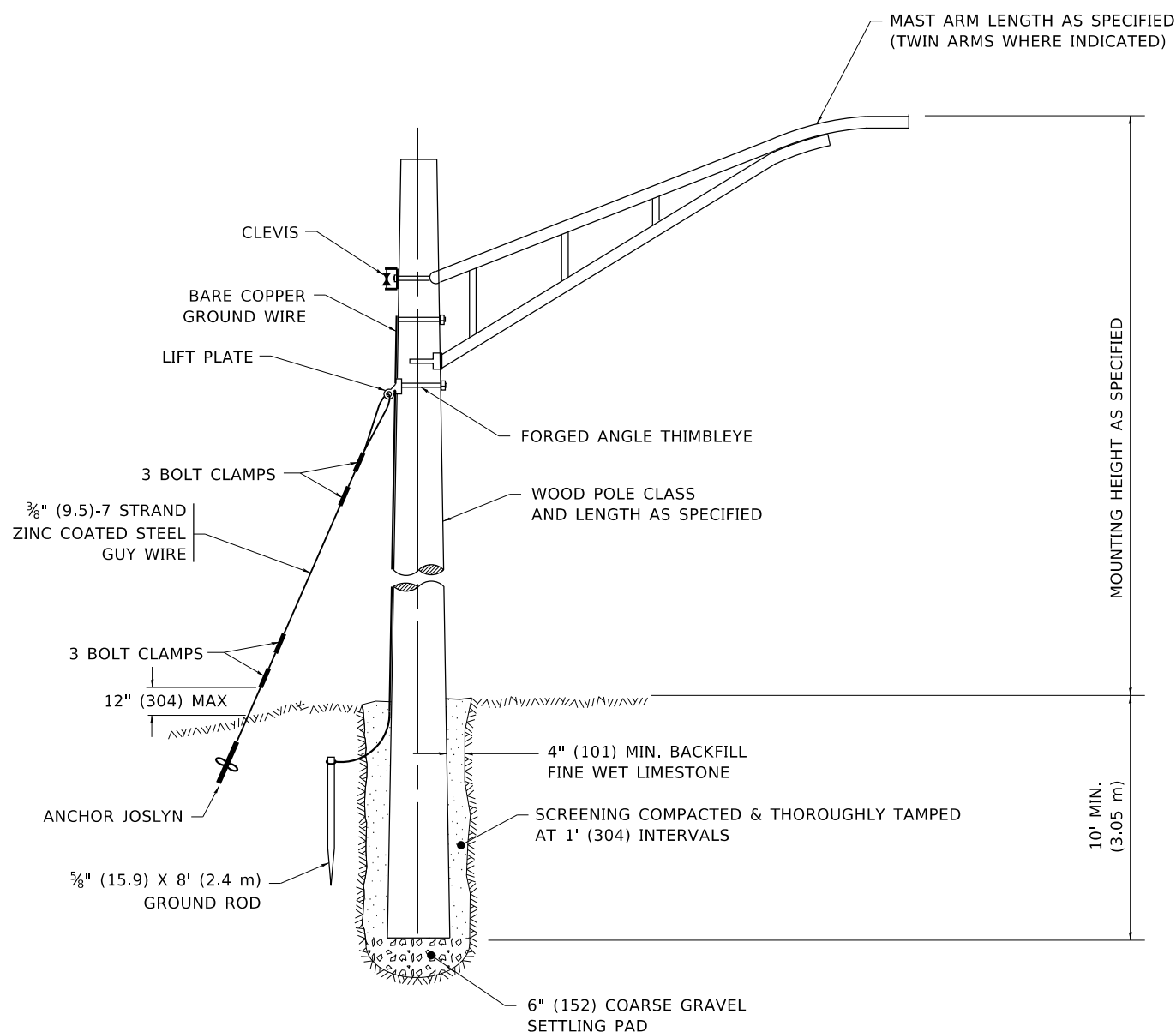
USER NAME = rothjp	DESIGNED -	REVISED -
	DRAWN -	REVISED -
PLOT SCALE = 100.0000 ' / in.	CHECKED -	REVISED -
PLOT DATE = 1/21/2021	DATE -	REVISED -

**STATE OF ILLINOIS**  
**DEPARTMENT OF TRANSPORTATION**

**PAVEMENT MARKING PLAN**  
**IL. RT. 47 (3.6 MILES S/O US. RT. 20)**

SCALE: 1"=50'    SHEET 1 OF 1 SHEETS    STA. \_\_\_\_\_ TO STA. \_\_\_\_\_

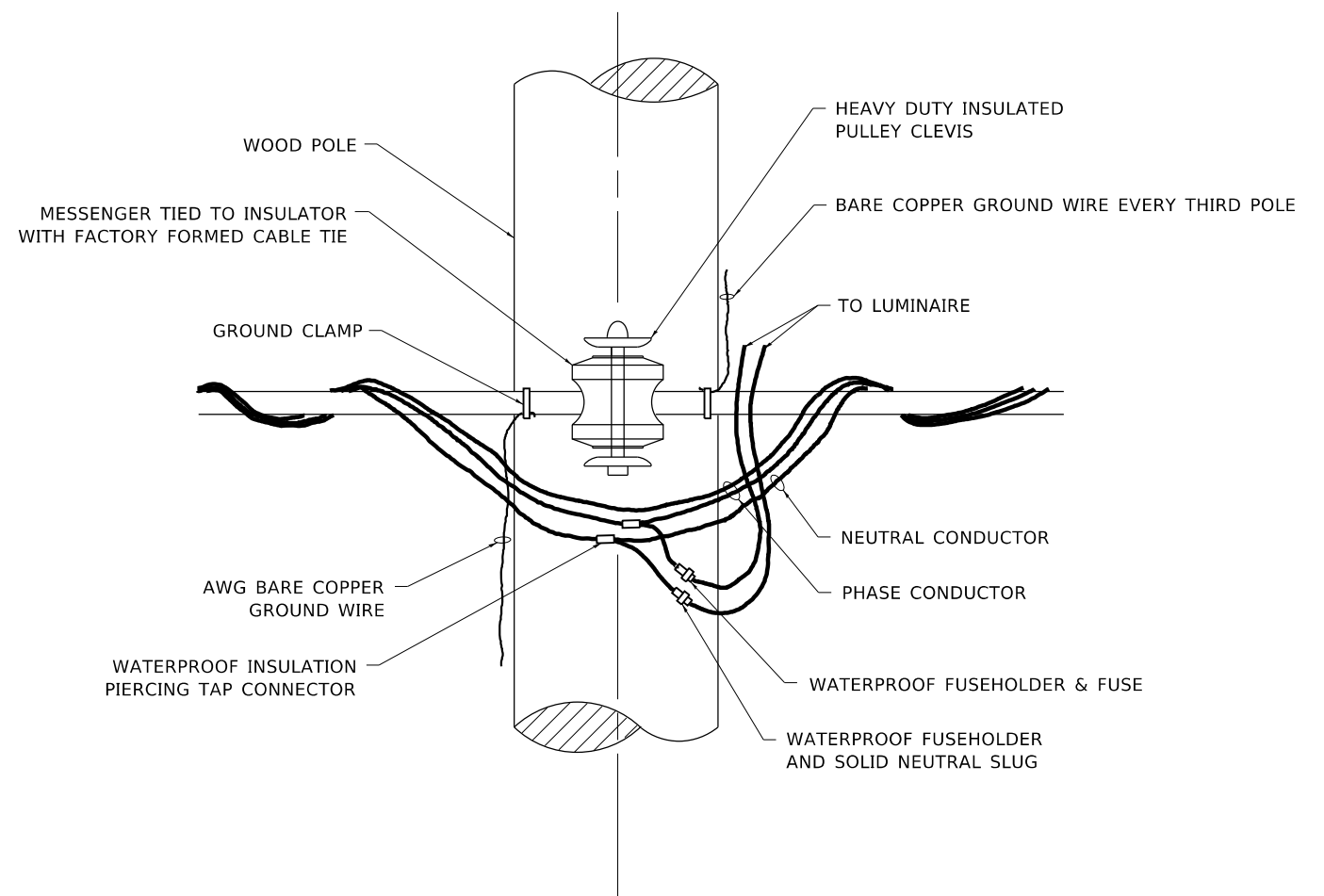
F.A.P. RTE. 326	SECTION 2020-241-T	COUNTY KANE	TOTAL SHEETS 16	SHEET NO. 9
ILLINOIS FED. AID PROJECT			CONTRACT NO. 62N10	



**TEMPORARY LIGHT POLE DETAIL**

NOTE:

- 1. ALL DIMENSIONS IN INCHES (MILLIMETERS) UNLESS OTHERWISE INDICATED.
- 2. MAST ARM SHALL BE RATED FOR THE SPECIFIED MOUNTING HEIGHT.



**TEMPORARY LIGHT POLE ATTACHMENT DETAIL**

MODEL: Default  
 FILE: \\nas101.pswp.com\data\illinois.gov\PIWDOT\Documents\DOT\_Offices\District 1\Projects\104721\CADD\Bids\Design\DESIGN.dgn

USER NAME = rothjp	DESIGNED -	REVISED - 08-08-03
	DRAWN -	REVISED - R.T. 07-26-16
PLOT SCALE = 100,0000 ' / in.	CHECKED -	REVISED -
PLOT DATE = 1/21/2021	DATE -	REVISED -

**STATE OF ILLINOIS  
DEPARTMENT OF TRANSPORTATION**

<b>TEMPORARY LIGHT POLE DETAILS</b>				
SCALE: NONE	SHEET 1	OF 1	SHEETS	STA. TO STA.

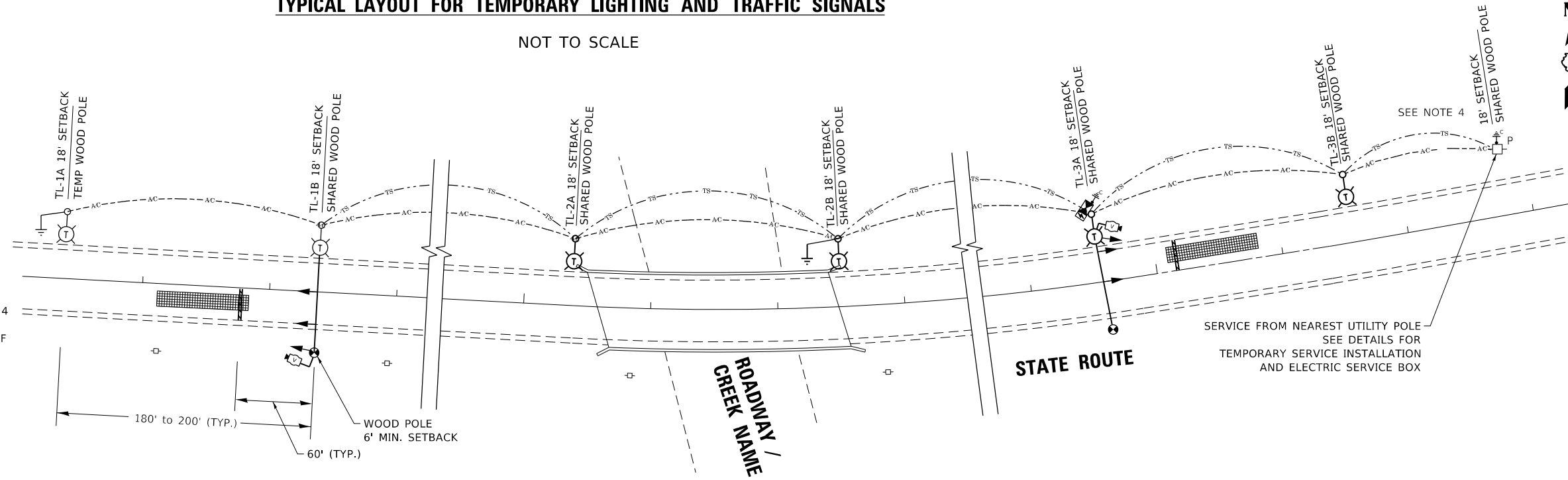
F.A. RTE.	SECTION	COUNTY	TOTAL SHEETS	SHEET NO.
	<b>BE-800</b>			
		CONTRACT NO.		
ILLINOIS FED. AID PROJECT				

**TYPICAL LAYOUT FOR TEMPORARY LIGHTING AND TRAFFIC SIGNALS**

NOT TO SCALE

**LEGEND**

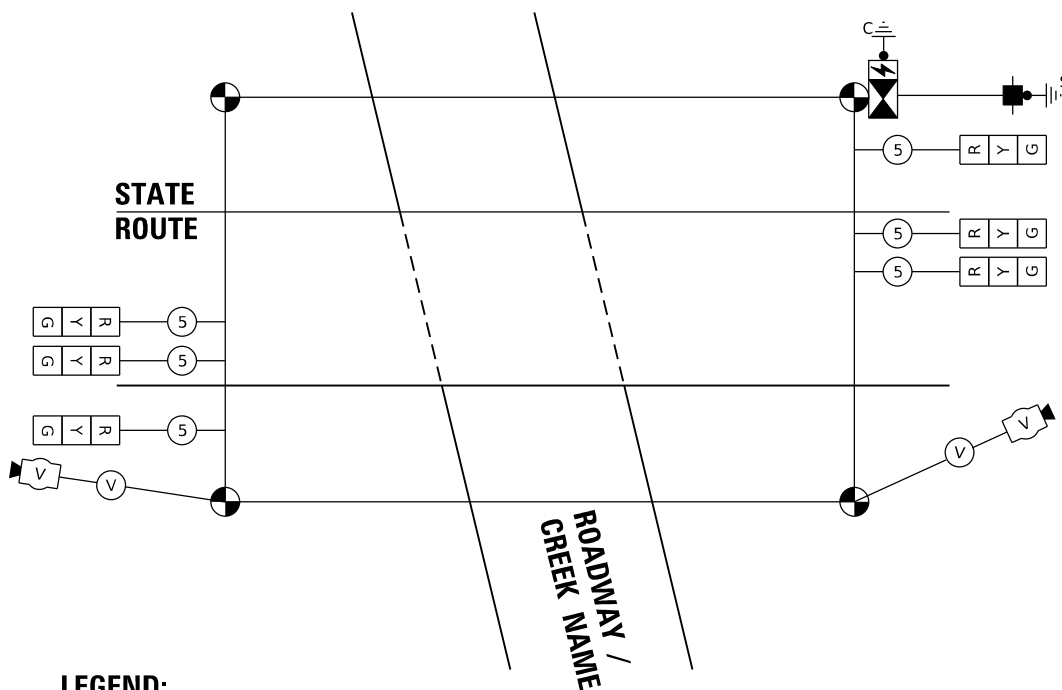
- 26,000-30,000 LUMENS, 120V, MCIII LED WITH PHOTO CELL 15' MA, 50' MH ON WOOD POLE, CLASS 4
- 3-1/C#2, AERIAL CABLE WITH MESSENGER WIRE UNLESS OTHERWISE NOTED
- TL-1A TEMPORARY LIGHTING UNIT NUMBER - ONE CIRCUIT A
- GROUND ROD 5/8" DIA. x 10'
- COMBINATION LIGHTING AND TRAFFIC POLE MOUNTED ELECTRICAL SERVICE BOX
- TEMPORARY WOOD POLE - NOMINAL 60 FT., CLASS 4
- TEMPORARY LED TRAFFIC SIGNAL HEAD, NUMBER OF SECTION AND DISPLAY AS REQUIRED.
- TEMPORARY TRAFFIC SIGNAL SPAN WIRE, NUMBER OF CONDUCTORS AS REQUIRED.
- TEMPORARY TRAFFIC CONTROLLER WITH UPS AND BOTTOM PLATE MOUNTED TO WOOD POLE
- TEMPORARY VIDEO DETECTOR



**GENERAL NOTES:**

1. CONTACT TO THE ELECTRIC UTILITY SHALL BE INITIATED BEFORE THE PRECONSTRUCTION MEETING, AND DOCUMENTATION OF CONTACT SHALL BE PRESENTED AT THAT MEETING. NO PLACEMENT OF POLES WILL BE ALLOWED WITHOUT EVIDENCE OF A SIGNED AGREEMENT WITH THE ELECTRIC UTILITY, FURNISHED TO THE ENGINEER.
2. UNLESS OTHERWISE INDICATED, AND EXCEPT AS OTHERWISE NOTED, THIS STANDARDIZED LAYOUT SHALL APPLY FOR BRIDGES NOT EXCEEDING A 250-FOOT SPAN. FOR BRIDGE SPANS IN EXCESS OF 250 FEET, THE POLES IMMEDIATELY ADJACENT TO THE BRIDGE SHALL BE 100-FOOT POLES (90-FOOT MOUNTING HEIGHT), WITH 56,000-60,000 LUMENS TYPE III LED HIGH-MAST LUMINAIRES AS APPROVED BY THE ENGINEER.
3. THE LAYOUT OF THE TEMPORARY EQUIPMENT WILL VARY BASED ON FIELD CONDITIONS, STAGING, UTILITY IMPACTS, AND THE ELECTRIC SERVICE LOCATION AS COORDINATED WITH THE ELECTRIC UTILITY. THE CONTRACTOR SHALL SUBMIT A PLAN INDICATING THE SETTING OF POLES, TRAFFIC SIGNALS, AND COMBINED SERVICE. THIS PLAN MUST BE APPROVED BY THE ENGINEER BEFORE ANY POLES ARE PLACED
4. THE ELECTRIC SERVICE SHALL BE 240/120V. WHERE 240V SERVICE IS NOT AVAILABLE, THE CONTRACTOR MAY SUBMIT A PROPOSAL FOR 120V SERVICE. DROP CABLE, MAIN BREAKER, AND ALL OTHER SERVICE APPURTENANCES SHALL BE APPROPRIATELY RATED AND INCLUDED REGARDLESS OF THE SERVICE VOLTAGE APPLIED.
5. THE TEMPORARY LIGHTING AND TRAFFIC SIGNAL INSTALLATION SHALL SHARE ANY COMMON ELEMENTS SUCH AS WOOD POLES, ELECTRICAL SERVICE, ELECTRIC SERVICE BOX, ETC. THE CONTRACTOR SHALL COORDINATE TEMPORARY LIGHTING AND TRAFFIC SIGNAL INSTALLATIONS.
6. THE LIGHT POLE SETBACK FROM THE EDGE OF TRAVEL PAVEMENT SHALL BE 18 FT. UNLESS THE LIGHT POLE IS BEHIND GUARDRAIL. THE LIGHT POLES INSTALLED BEHIND THE GUARDRAIL OR BARRIER WALL SHOULD HAVE AT LEAST 8 FT. SETBACK FROM THE BACK OF THE SHOULDER AND OR AS DIRECTED BY THE ENGINEER.
7. EACH LIGHTING UNIT SHALL BE CONTROLLED BY A PHOTO CELL MOUNTED ON EACH LUMINAIRE WITH THE LIGHTING CIRCUIT FED FROM THE TEMPORARY SERVICE DISCONNECT BOX. OTHER MEANS OF LUMINAIRE CONTROL CAN BE CONSIDERED IF APPROVED BY THE ENGINEER.
8. THE CONTRACTOR SHALL SPLICE AERIAL CABLE AT THE LIGHT POLE USING HEAT SHRINKABLE CAPS WITH THE FACTORY APPLIED WATERPROOF SEALANT OR AN APPROVED UL LISTED AERIAL TAP DEVICE.
9. ALL AREAS DISTURBED UNDER THIS CONTRACT SHALL BE RESTORED TO THE ORIGINAL CONDITION OR BETTER, TO THE SATISFACTION OF THE ENGINEER.
10. THIS LAYOUT IS ONLY FOR SINGLE LANE STAGING WITHOUT PRIVATE DRIVEWAYS WITHIN SINGLE LANE WORK ZONE.

**CABLE PLAN AND PHASE DESIGNATION DIAGRAM (TYPICAL)**



**LEGEND:**

- TEMPORARY VIDEO / RADAR DETECTOR
- TEMPORARY SIGNAL HEAD 12" SECTION.
- CABLE INDICATES NUMBER OF CONDUCTORS IN CABLE ALL CONDUCTORS TO BE NUMBER 14 AWG UNLESS OTHERWISE NOTED.

**LEGEND:**

- NUMBER ASSOCIATED WITH PROTECTED PHASE

MODEL: Default  
FILE: \\hpc-pub\hpcroom\adg\illinois\pwr\WIDOT\Documents\IBOT\_Offices\IBOT\1\Project\104721\CAD\Drawings\Design\DRS54.dwg

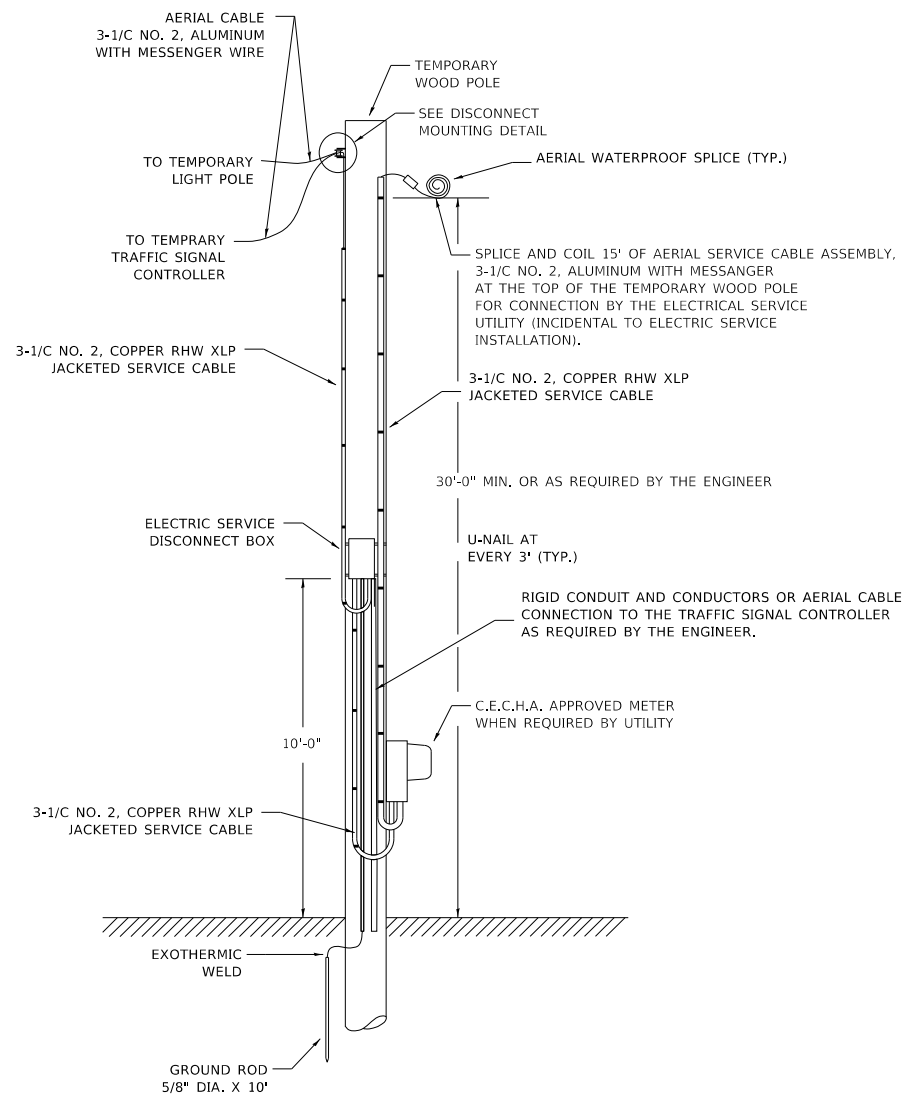
USER NAME = rothjp	DESIGNED -	REVISED - 07/28/2020
PLOT SCALE = 100.0000' / in.	DRAWN -	REVISED -
PLOT DATE = 1/21/2021	CHECKED -	REVISED -
	DATE - 01/14/2010	REVISED -

**STATE OF ILLINOIS  
DEPARTMENT OF TRANSPORTATION**

**TEMPORARY LIGHTING AND TRAFFIC SIGNALS  
FOR SINGLE LANE STAGING**

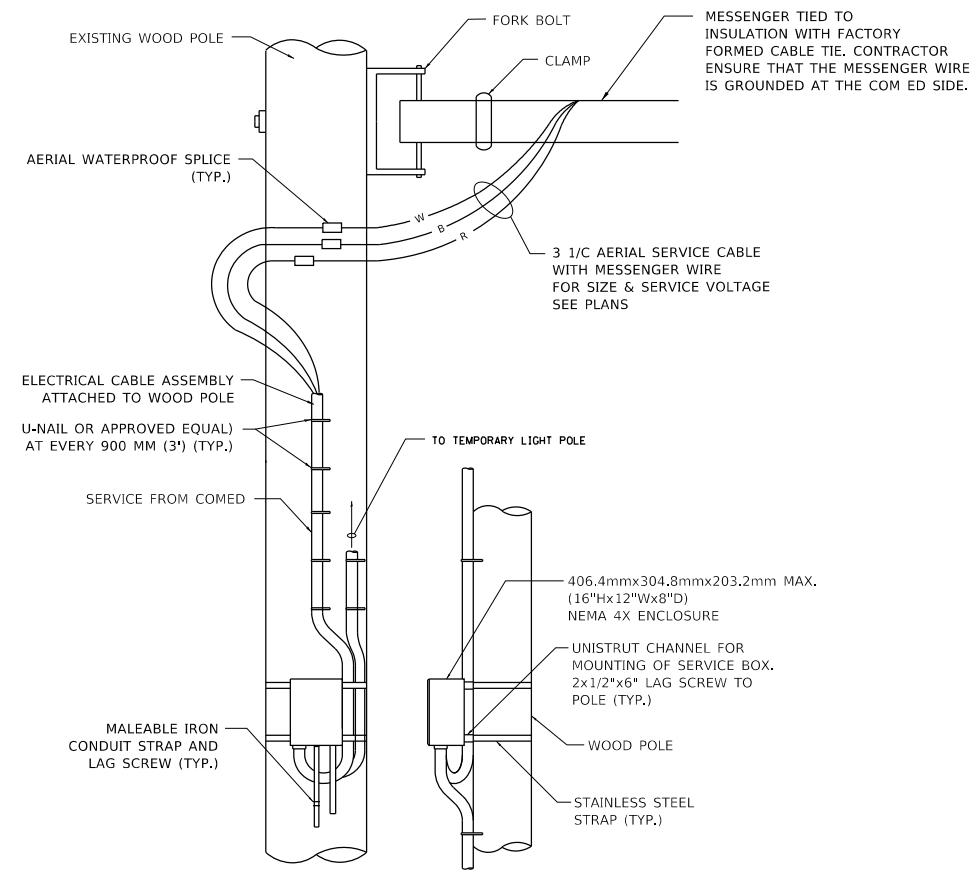
SCALE: NONE SHEET 1 OF 3 SHEETS STA. TO STA.

F.A. RTE.	SECTION	COUNTY	TOTAL SHEETS	SHEET NO.
	BE-805			
CONTRACT NO.				
ILLINOIS FED. AID PROJECT				



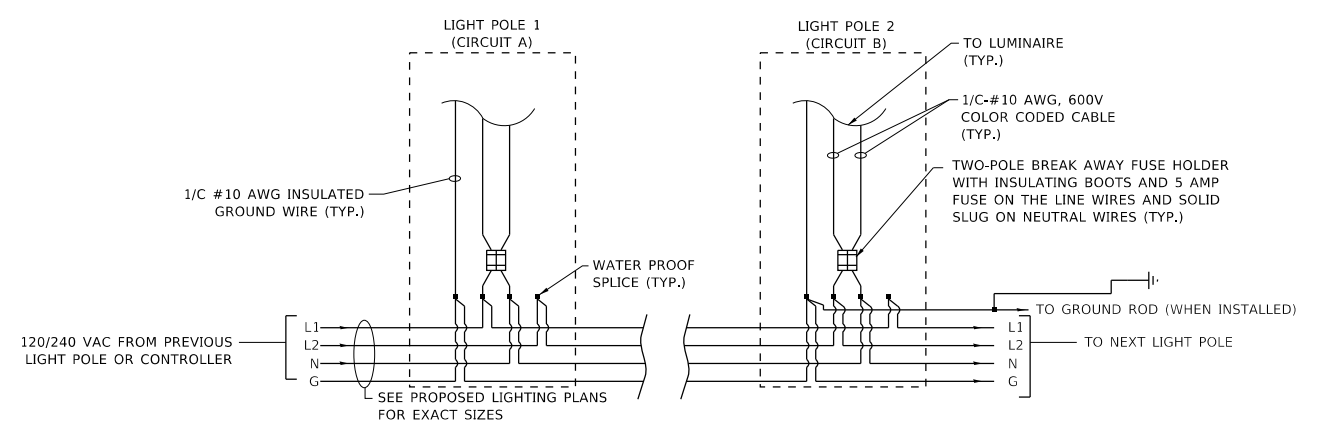
**TEMPORARY SERVICE INSTALLATION DETAIL**

NOT TO SCALE



**DISCONNECT MOUNTING DETAIL**

NOT TO SCALE



**LIGHT POLE WIRING DETAIL**

NOT TO SCALE

MODEL: Default  
FILE: \\nrcs\p\planning\room\dat\illinois\pwr\p\DOT\Documents\DOT\_Offices\Dir\et\1\Projects\104721\CADD\Drawings\Design\DESIGN.dgn

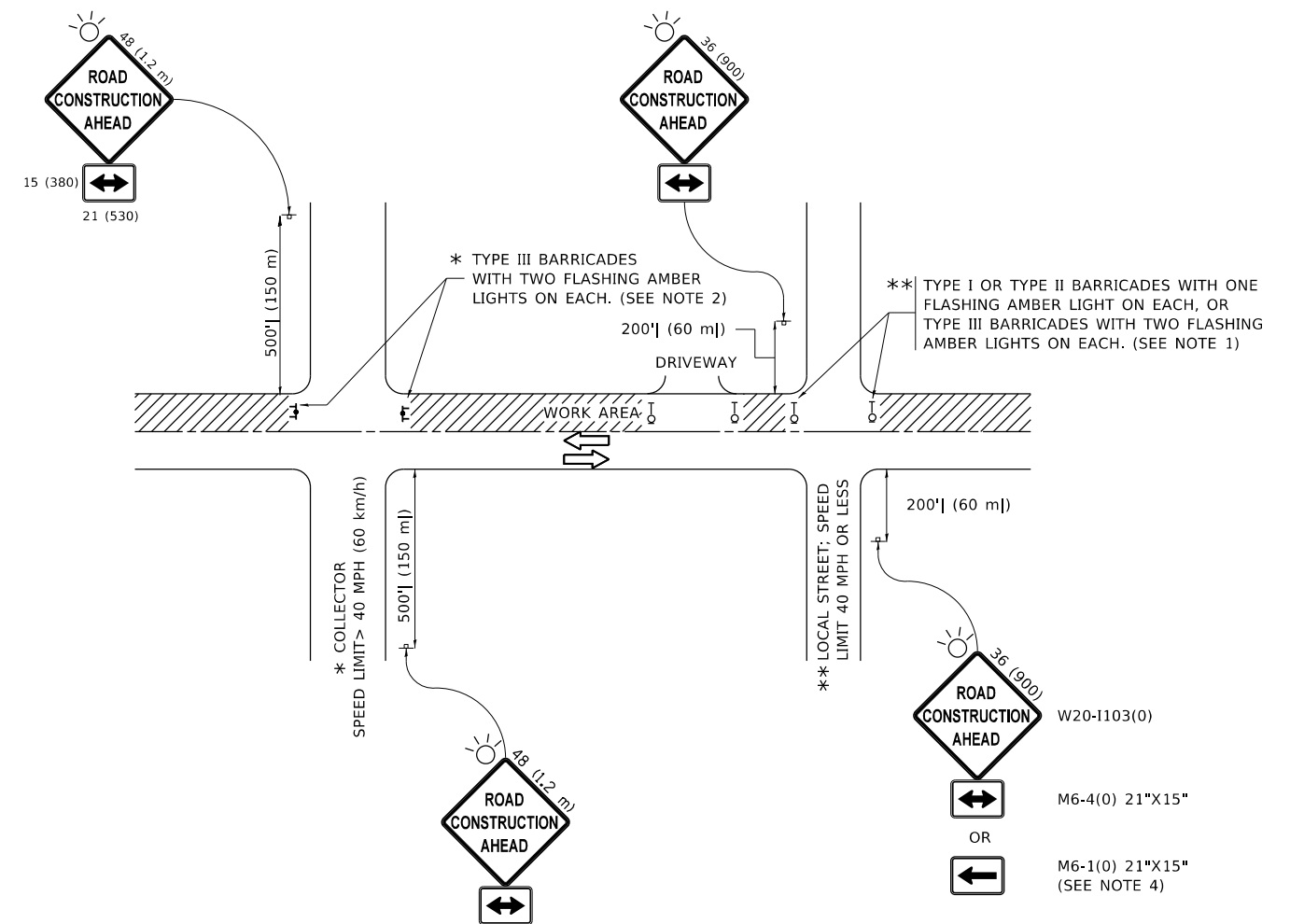
USER NAME = rothjp	DESIGNED - MP	REVISED -
	DRAWN -	REVISED -
PLOT SCALE = 100.0000' / in.	CHECKED -	REVISED -
PLOT DATE = 1/21/2021	DATE - 01/14/10	REVISED -

**STATE OF ILLINOIS  
DEPARTMENT OF TRANSPORTATION**

TEMPORARY LIGHTING AND TRAFFIC SIGNALS FOR SINGLE LANE STAGING			
SCALE: NONE	SHEET 2	OF 3 SHEETS	STA. TO STA.

F.A. RTE.	SECTION	COUNTY	TOTAL SHEETS	SHEET NO.
	BE-805			
ILLINOIS			CONTRACT NO.	
FED. AID PROJECT				





**NOTES:**

1. SIDE ROAD WITH A SPEED LIMIT OF 40 MPH (60 km/h) OR LESS AS SHOWN ON THE DRAWING AND AS DIRECTED BY THE ENGINEER:
  - a) ONE "ROAD CONSTRUCTION AHEAD" SIGN 36 x 36 (900x900) WITH A FLASHER MOUNTED ON IT APPROXIMATELY 200' (60 m) IN ADVANCE OF THE MAIN ROUTE.
  - b) THE CLOSED PORTION OF THE MAIN ROUTE SHALL BE PROTECTED BY BLOCKING WITH TYPE I, TYPE II OR TYPE III BARRICADES, 1/3 OF THE CROSS SECTION OF THE CLOSED PORTION.
2. SIDE ROAD WITH A SPEED LIMIT GREATER THAN 40 MPH (60 km/h) AS SHOWN ON THE DRAWING AND AS DIRECTED BY THE ENGINEER:
  - a) ONE "ROAD CONSTRUCTION AHEAD" SIGN 48 x 48 (1.2 m x 1.2 m) WITH A FLASHER MOUNTED ON IT APPROXIMATELY 500' (150 m) IN ADVANCE OF THE MAIN ROUTE.
  - b) BLOCKING WITH TYPE III BARRICADES, 1/2 OF THE CROSS SECTION OF THE CLOSED PORTION.
3. CONES MAY BE SUBSTITUTED FOR BARRICADES OR DRUMS AT HALF THE SPACING DURING DAY OPERATIONS. CONES SHALL BE A MINIMUM OF 28 (710) IN HEIGHT.
4. SIGNING AND THE WORK ZONE, A SINGLE HEADED ARROW (M6-1) SHALL BE USED IN LIEU OF THE DOUBLE HEADED ARROW (M6-4).
5. WHEN WORK IS BEING PERFORMED ON A SIDE ROAD OR DRIVEWAY, FOLLOW THE APPLICABLE STANDARD(S). THE DIRECTIONAL ARROW (M6-1 OR M6-4) SHALL BE COVERED OR REMOVED WHEN NO LONGER CONSISTENT WITH THE TRAFFIC CONTROL SET-UP.
6. ADVANCE WARNING SIGNS ARE TO BE OMITTED ON DRIVEWAYS UNLESS OTHERWISE SPECIFIED IN THE PLANS OR BY THE ENGINEER.
7. THE TRAFFIC CONTROL AND PROTECTION FOR SIDE ROADS, INTERSECTIONS, AND DRIVEWAYS SHALL BE INCLUDED IN THE COST OF SPECIFIED TRAFFIC CONTROL STANDARDS OR ITEMS.

All dimensions are in inches (millimeters) unless otherwise shown.

MODEL: Default  
 FILE: \\nlsdc-prod\pub\room\dat\illinois\gov\PIWDOT\Documents\DOT\_Offices\District\_1\Projects\ID104721\CADD\Drawings\Design\DESIGN.dgn

USER NAME = rothjp	DESIGNED - L.H.A.	REVISED - A. HOUSEH 10-15-96
	DRAWN -	REVISED - T. RAMMACHER 01-06-00
PLOT SCALE = 100.0000' / in.	CHECKED -	REVISED - A. SCHUETZE 07-01-13
PLOT DATE = 1/21/2021	DATE - 06-89	REVISED - A. SCHUETZE 09-15-16

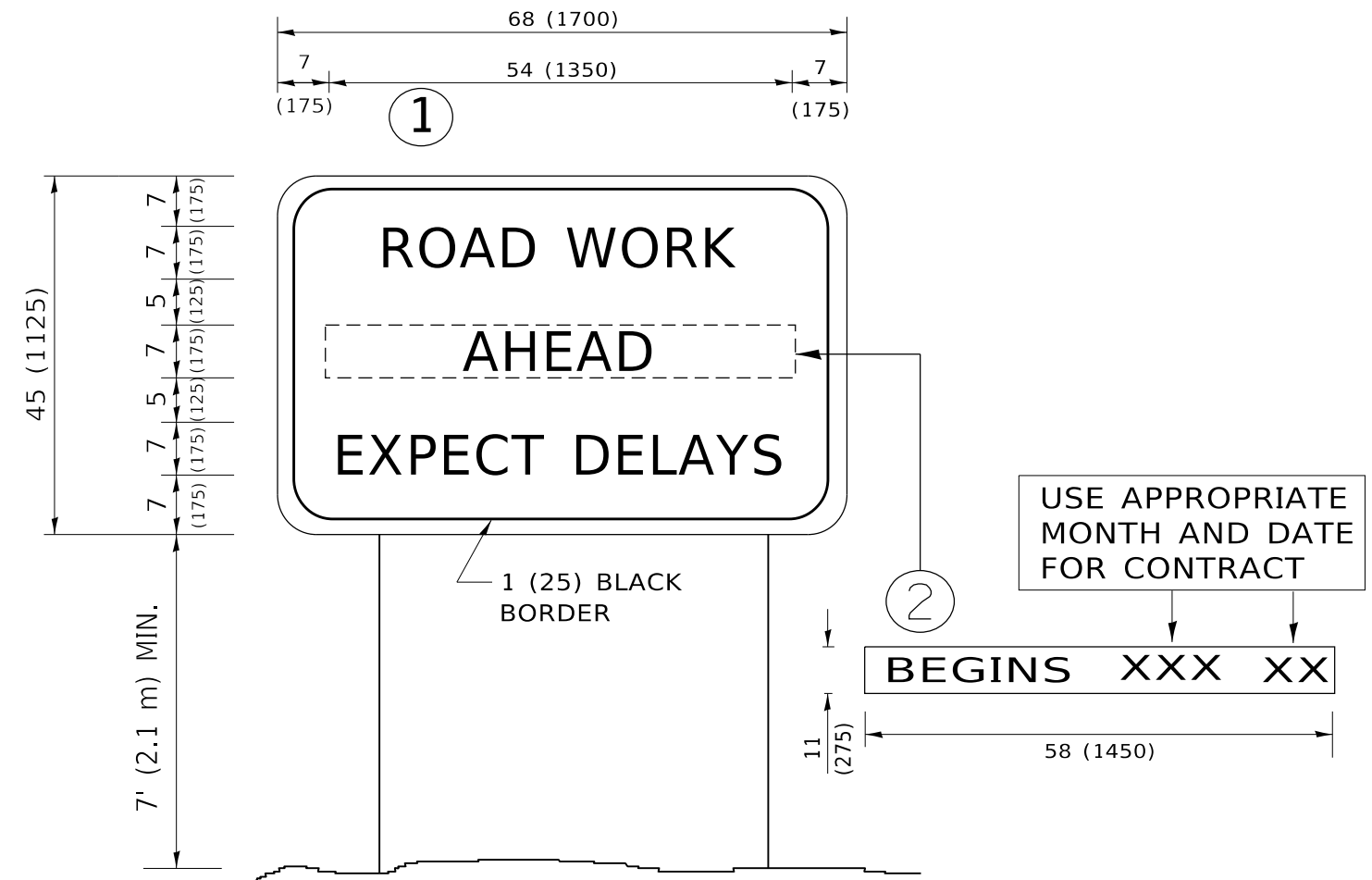
**STATE OF ILLINOIS  
DEPARTMENT OF TRANSPORTATION**

**TRAFFIC CONTROL AND PROTECTION FOR  
SIDE ROADS, INTERSECTIONS, AND DRIVEWAYS**

SCALE: NONE    SHEET 1 OF 1 SHEETS    STA. TO STA.

F.A.P. RTE.	SECTION	COUNTY	TOTAL SHEETS	SHEET NO.
326	2020-241-T	KANE	16	14
<b>TC-10</b>			CONTRACT NO. 62N10	
ILLINOIS FED. AID PROJECT				





**NOTES:**

1. USE BLACK LETTERING ON ORANGE BACKGROUND.
2. ERECT SIGNS IN ADVANCE OF THE LOCATION FOR THE "ROAD CONSTRUCTION AHEAD" SIGN AT LOCATIONS AS DIRECTED BY THE ENGINEER.
3. ERECT SIGN ① WITH INSTALLED PANEL ② ONE WEEK PRIOR TO THE START OF CONSTRUCTION.
4. REMOVE PANEL ② SOON AFTER THE START OF CONSTRUCTION.
5. SEE SPECIAL PROVISION FOR "TEMPORARY INFORMATION SIGNING" FOR ADDITIONAL INFORMATION.
6. ONE SIGN ASSEMBLY EQUALS 25.70 SQ. FT. (2.3 SQ. M.)
7. SHALL BE PAID FOR AS TEMPORARY INFORMATION SIGNING.

ALL DIMENSIONS ARE IN INCHES (MILLIMETERS) UNLESS OTHERWISE SHOWN.

MODEL: Default  
 FILE: \\nas01c.psu.edu\lanroom\data\illinois.gov\PWIDOT\Documents\DOT\_Offices\Dir\ctc\_1\Projects\104721\CADD\Drawings\Design\DRS54.dgn

USER NAME = rothjp	DESIGNED -	REVISED - R. MIRS 09-15-97
	DRAWN -	REVISED - R. MIRS 12-11-97
PLOT SCALE = 100.0000 ' / in.	CHECKED -	REVISED - T. RAMMACHER 02-02-99
PLOT DATE = 1/21/2021	DATE -	REVISED - C. JUCIUS 01-31-07

**STATE OF ILLINOIS  
DEPARTMENT OF TRANSPORTATION**

**ARTERIAL ROAD  
INFORMATION SIGN**

SCALE: NONE SHEET 1 OF 1 SHEETS STA. TO STA.

F.A.P. RTE.	SECTION	COUNTY	TOTAL SHEETS	SHEET NO.
326	2020-241-T	KANE	16	16
<b>TC-22</b>			CONTRACT NO. 62N10	
ILLINOIS FED. AID PROJECT				