

INDEX OF SHEETS

1 COVER SHEET
 2 INDEX OF SHEETS, HIGHWAY STANDARDS, GENERAL NOTES & COMMITMENTS
 3-4 SUMMARY OF QUANTITIES
 5-11 MAINTENANCE OF TRAFFIC
 12-13 PAVEMENT MARKING PLANS
 14-18 S.N. 016-0706 DES PLAINES AVE BRIDGE
 19-26 S.N. 016-0710 RIDGELAND AVE BRIDGE
 27-40 DISTRICT ONE DETAILS

GENERAL NOTES

1. THE CONTRACTOR SHALL BE RESPONSIBLE FOR COLLECTING AND MAINTAINING AN ELECTRONIC LOG OF ALL STAKEOUT SURVEY THAT IS PERFORMED ON THE JOB, EITHER BY HIM/HER OR ANY SUB-CONTRACTOR PERFORMING THE STAKEOUT. UPON REQUEST, ALL LOGS SHALL BE SUBMITTED TO THE DEPARTMENT. NO ADDITIONAL COMPENSATION WILL BE ALLOWED FOR THIS WORK BUT SHALL BE CONSIDERED INCLUDED IN THE COST FOR CONSTRUCTION LAYOUT.
2. ALL ELEVATIONS IN THE PLANS ARE BASED UPON THE NORTH AMERICAN VERTICAL DATUM OF 1988 (NAVD88).
3. ANY REFERENCE TO A STANDARD IN THESE PLANS SHALL BE INTERPRETED TO MEAN THE LATEST EDITION.
4. THE CONTRACTOR SHALL CONTACT J.U.L.I.E. AT LEAST 48 HOURS PRIOR TO EXCAVATION TO DETERMINE WHICH UTILITIES ARE IN THE AREA.
5. THE CONTRACTOR SHALL REQUEST AND GAIN APPROVAL FROM THE ILLINOIS DEPARTMENT OF TRANSPORTATION'S EXPRESSWAY TRAFFIC OPERATIONS ENGINEER AT WWW.IDOTLCS.COM TWENTY-FOUR (24) HOURS IN ADVANCE OF ALL DAILY LANE, RAMP, AND SHOULDER CLOSURES AND 7 DAYS IN ADVANCE OF ALL PERMANENT AND WEEKEND CLOSURES ON ALL FREEWAYS AND/OR EXPRESSWAYS IN DISTRICT ONE. THIS ADVANCE NOTIFICATION IS CALCULATED BASED ON WORKWEEK OF MONDAY THROUGH FRIDAY AND SHALL NOT INCLUDE WEEKENDS NOR HOLIDAYS.
6. TWO WEEKS PRIOR TO PLACEMENT OF PERMANENT PAVEMENT MARKINGS, THE ENGINEER SHALL CONTACT BOTH THE ARTERIAL TRAFFIC FIELD ENGINEER, ERIC CAMPOS AT ERIC.CAMPOS@ILLINOIS.GOV, AND THE EXPRESSWAY TRAFFIC FIELD ENGINEER AT (847) 705-4604.
7. BEFORE BEGINNING ANY WORK, THE CONTRACTOR SHALL RETAIN AND RECORD FOR FUTURE REFERENCE, ALL EXISTING PAVEMENT MARKING LINES (AND RAISED REFLECTIVE PAVEMENT MARKERS) IN ORDER THAT THESE LOCATIONS CAN BE RE-ESTABLISHED FOR STRIPING. EXACT LOCATIONS OF ALL PAVEMENT MARKINGS SHALL BE AS DIRECTED BY THE ENGINEER.
8. THE CONTRACTOR AND THE RESIDENT ENGINEER SHALL CONTACT THE VILLAGE OF FOREST PARK PUBLIC WORKS DIRECTOR (JOHN DOSS 708-323-9136 OR JDOSS@FORESTPARK.NET) AT LEAST ONE (1) WEEK PRIOR TO THE PLACEMENT OF ANY TRAFFIC CONTROL DEVICES.
9. CONTRACTOR SHALL OBTAIN A NO COST VILLAGE OF OAK PARK PERMIT# 202100097 FOR THE INSTALLATION OF THE DETOUR FOR RIDGELAND AVE CLOSURE. CONTRACTOR SHALL REGISTER AS A LICENCED CONTRACTOR WITH THE VILLAGE & PAY REGISTRATION FEE REGISTRATION IS DONE ONLINE AT [HTTPS://VILLAGEVIEWOAK-PARK.US/CITYVIEWPORTAL](https://villageviewoak-park.us/cityviewportal)
10. RIDGELAND AVENUE WORK SHALL OCCUR BETWEEN JUNE 14, 2021, AND AUGUST 20, 2021.
11. TWO WEEKS PRIOR TO STARTING WORK ON RIDGELAND AVENUE THE CONTRACTOR SHALL NOTIFY THE VILLAGE OF OAK PARKS VILLAGE ENGINEER BILL MCKENNA AT MCKENNA@OAK-PARK.US

HIGHWAY STANDARDS

STD NO.	TITLE
000001-08	STANDARD SYMBOLS, ABBREVIATIONS AND PATTERNS
001006	DECIMAL OF AN INCH AND OF A FOOT
701301-04	LANE CLOSURE, 2L, 2W, SHORT TIME OPERATIONS
701311-03	LANE CLOSURE, 2L, 2W, MOVING OPERATIONS - DAY ONLY
701321-18	LANE CLOSURE, 2L, 2W, BRIDGE REPAIR WITH BARRIER
701400-10	APPROACH TO LANE CLOSURE, FREEWAY/EXPRESSWAY
701401-12	LANE CLOSURE, FREEWAY/EXPRESSEWAY
701411-09	LANE CLOSURE, MULTILANE, AT ENTRANCE OR EXIT RAMP, FOR SPEEDS ≥ 45 MPH
701428-01	TRAFFIC CONTROL, SETUP AND REMOVAL, FREEWAY/EXPRESSWAY
701446-11	TWO LANE CLOSURE, FREEWAY/EXPRESSWAY
701501-06	URBAN LANE CLOSURE, 2L, 2W, UNDIVIDED
701701-10	URBAN LANE CLOSURE, MULTILANE INTERSECTION
701801-06	SIDEWALK, CORNER OR CROSSWALK CLOSURE
701901-08	TRAFFIC CONTROL DEVICES
704001-08	TEMPORARY CONCRETE BARRIER
720001-01	SIGN PANEL MOUNTING DETAILS
720006-04	SIGN PANEL ERECTION DETAILS
728001-01	TELESCOPING STEEL SIGN SUPPORT
729001-01	APPLICATIONS OF TYPES A AND B METAL POSTS (FOR SIGNS & MARKERS)
780001-05	TYPICAL PAVEMENT MARKINGS
781001-04	TYPICAL APPLICATIONS RAISED REFLECTIVE PAVEMENT MARKERS
701106-07	OFF-ROAD OPERATIONS, MULTILANE, MORE THAN 15' (4.5_m) AWAY.

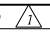
COMMITMENTS:

NONE

 REVISED SHEET 2/23/2021

USER: f:\dave
 C:\PLOT.DWG
 FILE NAME: PLOT_209_004_IDOT_PTB_190_14_Phase II_Voc-Var-Det-From-WO_18_62N03-CADD-CADD_Sheets\162N03-plc-cl-enotes.dgn



PLOT DRIVER = pdfNOLAYERsbw.plt:cf	DESIGNED - JWD	REVISED  02/23/2021 JWD
PEN TABLE = D162N03-PLOT.tbl	DRAWN - JWD	REVISED -
PLOT SCALE = 2.0000' / in.	CHECKED - PJM	REVISED -
PLOT DATE = 2/23/2021 9:42:12 AM	DATE - 02/02/2021	REVISED -

**STATE OF ILLINOIS
 DEPARTMENT OF TRANSPORTATION**

**INDEX OF SHEETS, HIGHWAY STANDARDS,
 GENERAL NOTES, AND COMMITMENTS**

SCALE: SHEET OF SHEETS STA. TO STA.

F.A.I. RTE.	SECTION	COUNTY	TOTAL SHEETS	SHEET NO.
290	2020-233-BR	COOK	40	2
CONTRACT NO. 62N03				
ILLINOIS FED. AID PROJECT				

USER: jdrive
 PLOT DRIVER = pdfnolayersbw.pltctfy
 PEN TABLE = D162N03-PLOT.tbl
 PLOT SCALE = 40.0000' / in.
 PLOT DATE = 2/2/2021 2:24:31 PM
 FILE NAME: PLOT_209_004_IDOT_PTB_190_14 Phase II Var-VariDesignWG_18_62N03CADDICADD_SHEET0162N03-htc-0001.dgn

SP	CODE NO.	ITEM	UNIT	TOTAL QUANTITY	CONSTRUCTION CODE	
					BRIDGE	BRIDGE
					0047	0047
					100% STATE	100% STATE
					DES PLAINES AVE SN 016-0706	RIDGELAND AVENUE SN 016-0710
	50102400	CONCRETE REMOVAL	CU YD	2.2	2.2	
	50157300	PROTECTIVE SHIELD	SQ YD	29	29	
	52000000	PREFORMED JOINT SEAL 1/2"	FOOT	65		65
	52000005	PREFORMED JOINT SEAL 1"	FOOT	162	162	
	52000025	PREFORMED JOINT SEAL 2"	FOOT	65		65
	67000400	ENGINEER'S FIELD OFFICE, TYPE A	CAL MO	12	6	6
	67100100	MOBILIZATION	L SUM	1	0.5	0.5
	70103815	TRAFFIC CONTROL SURVEILLANCE	CAL DA	75		75
	70107025	CHANGEABLE MESSAGE SIGN	CAL DA	40	20	20
	70300900	PAVEMENT MARKING TAPE, TYPE IV - LETTERS AND SYMBOLS	SQ FT	260	186	74
	70300904	PAVEMENT MARKING TAPE, TYPE IV 4"	FOOT	5797	2040	3757
	70300924	PAVEMENT MARKING TAPE, TYPE IV 24"	FOOT	31		31
	70400100	TEMPORARY CONCRETE BARRIER	FOOT	338		338
	70400200	RELOCATE TEMPORARY CONCRETE BARRIER	FOOT	338		338
	70600241	IMPACT ATTENUATORS, TEMPORARY (NON-REDIRECTIVE, NARROW), TEST LEVEL 2	EACH	2		2
	70600341	IMPACT ATTENUATORS, RELOCATE (NON-REDIRECTIVE, NARROW), TEST LEVEL 2	EACH	2		2
*	78000100	THERMOPLASTIC PAVEMENT MARKING - LETTERS AND SYMBOLS	SQ FT	83		83
*	78000200	THERMOPLASTIC PAVEMENT MARKING - LINE 4"	FOOT	316		316
*	78000400	THERMOPLASTIC PAVEMENT MARKING - LINE 6"	FOOT	219		219
*	78000650	THERMOPLASTIC PAVEMENT MARKING - LINE 24"	FOOT	47		47
*	78009000	MODIFIED URETHANE PAVEMENT MARKING - LETTERS AND SYMBOLS	SQ FT	83	37	46
*	78009004	MODIFIED URETHANE PAVEMENT MARKING - LINE 4"	FOOT	923	280	643
*	78009006	MODIFIED URETHANE PAVEMENT MARKING - LINE 6"	FOOT	165	141	24
*	78100300	REPLACEMENT REFLECTOR	EACH	37	10	27
*	78200011	BARRIER WALL REFLECTORS - TYPE C	EACH	216		216
	85000200	MAINTENANCE OF EXISTING TRAFFIC SIGNAL INSTALLATION	EACH	2		2
*	X0320087	DEBRIS SCREEN	SQ YD	426		426
*	78300202	PAVEMENT MARKING REMOVAL - WATER BLASTING	SQ FT	939	187	752

* SPECIALTY ITEM



PLOT DRIVER = pdfnolayersbw.pltctfy	DESIGNED - JWD	REVISED -
PEN TABLE = D162N03-PLOT.tbl	DRAWN - JWD	REVISED -
PLOT SCALE = 40.0000' / in.	CHECKED - PJM	REVISED -
PLOT DATE = 2/2/2021 2:24:31 PM	DATE - 02/02/2021	REVISED -

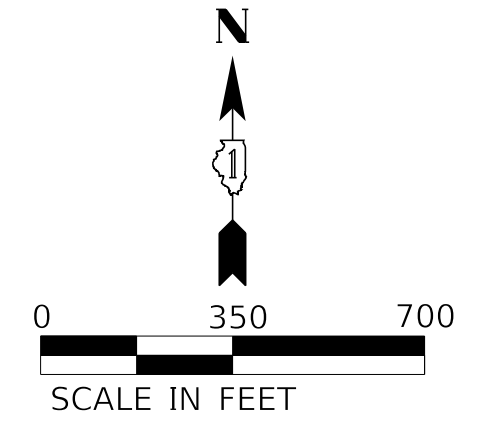
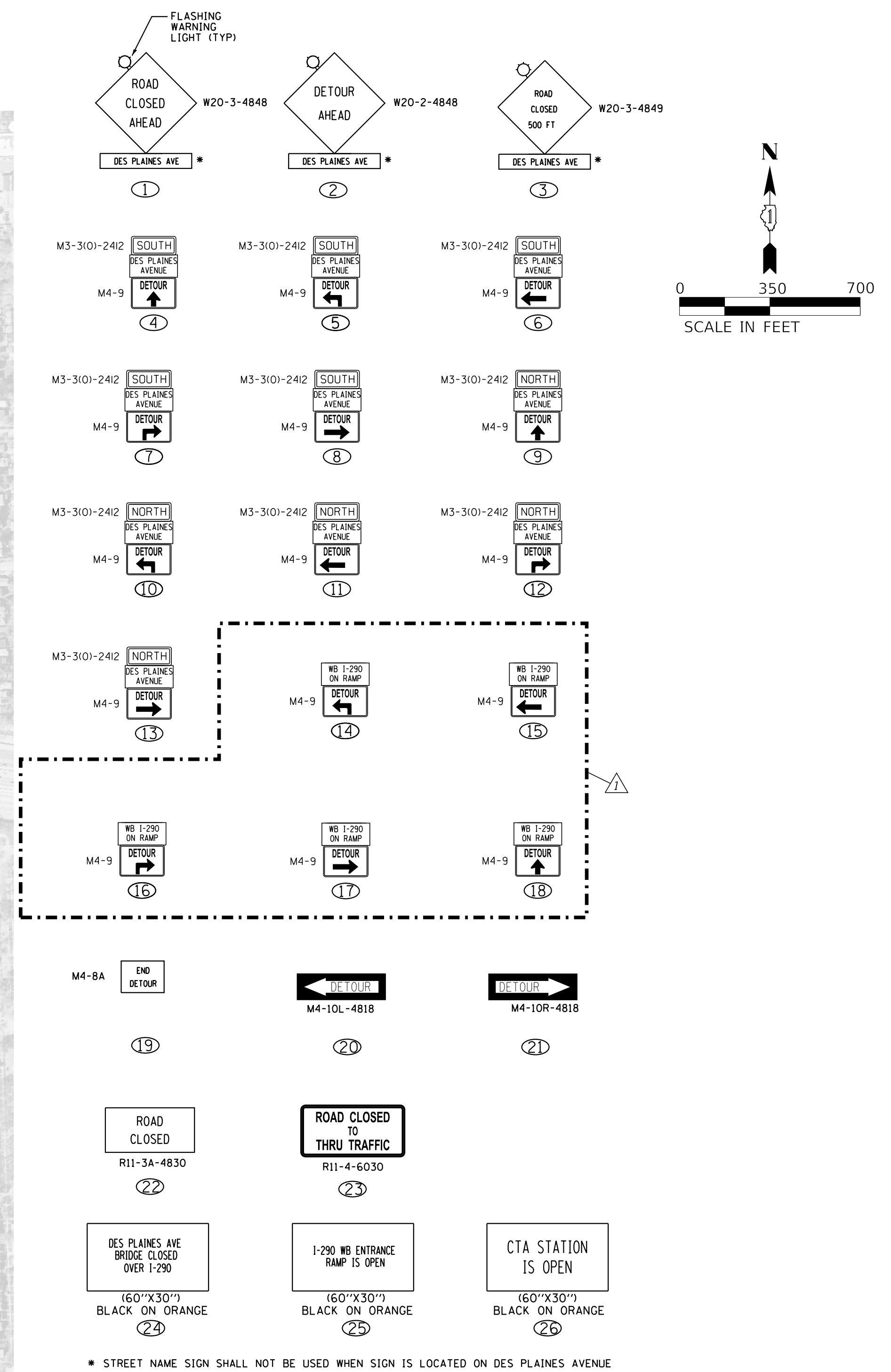
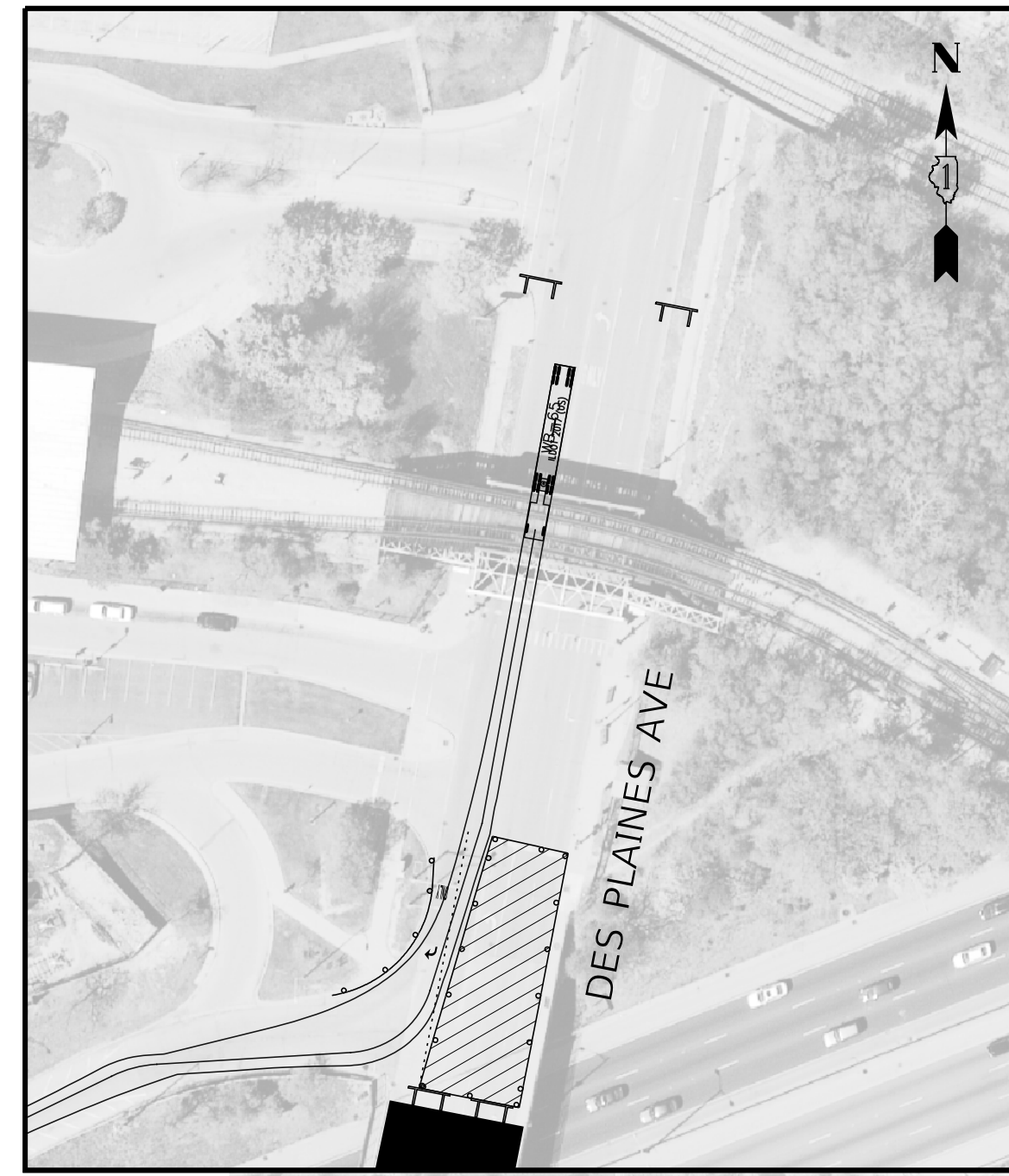
STATE OF ILLINOIS
 DEPARTMENT OF TRANSPORTATION

SUMMARY OF QUANTITIES

SCALE: SHEET OF SHEETS STA. TO STA.

REVISED SHEET 2/23/2021		REV-SEP	
F.A.I. RTE.	SECTION	COUNTY	TOTAL SHEETS
290	2020-233-BR	COOK	40
			SHEET NO. 3
CONTRACT NO. 62N03			
ILLINOIS FED. AID PROJECT			

COPYRIGHT © 2019, BY BAXTER & WOODMAN, INC.
 STATE OF ILLINOIS - PROFESSIONAL DESIGN FIRM
 LICENSE NO. - 184-001121 - EXPIRES 4/30/2020
 morning 2/23/2021 10:34:00 AM
 FILE NAME: I:\Crystal Lake\DOT\190508-SHT-MOT-Des Plaines_Detour.dgn
 FILE PATH: I:\Crystal Lake\DOT\190508-SHT-MOT-Des Plaines_Detour.dgn



LEGEND

- DIRECTION OF TRAFFIC
- DETOUR ROUTE
- SIGN
- TYPE III BARRICADES WITH TWO FLASHING WARNING LIGHTS
- WORK AREA/ROAD CLOSURE
- PARTIALLY CLOSED PORTION

REVISED SHEET 2/23/2021



USER NAME = morning	DESIGNED -	REVISED - 2/22/2021 SAM
	DRAWN -	REVISED -
PLOT SCALE = 350.0000' / in.	CHECKED -	REVISED -
PLOT DATE = 2/23/2021	DATE - 02/22/2021	FILE - 190508_SHT-MOT_Des Plaines_Detour.dgn

STATE OF ILLINOIS
 DEPARTMENT OF TRANSPORTATION

MAINTENANCE OF TRAFFIC - DETOUR
DES PLAINES AVENUE
 SCALE: 1" = 300' SHEET 14 OF 14 SHEETS STA. TO STA.

F.A.I. RTE.	SECTION	COUNTY	TOTAL SHEETS	SHEET NO.
290	2019-151-BR	COOK	40	7
CONTRACT NO. 62K23				
ILLINOIS FED. AID PROJECT BRIDGE REPAIR				

MAINTENANCE OF TRAFFIC STAGING DESCRIPTION

PRE-STAGE

CONSTRUCTION:

PRE-STAGE INCLUDES INSTALLATION OF TEMPORARY PROTECTIVE SHIELD.

TRAFFIC:

USE ONLY NIGHTTIME LANE CLOSURES ON I-290.

APPLICABLE DISTRICT ONE DETAILS AND IDOT HIGHWAY STANDARD DRAWINGS:

- TC-8 ENTRANCE AND EXIT RAMP CLOSURE DETAILS
- TC-9 TRAFFIC CONTROL DETAILS FOR FREEWAY SINGLE & MULTI-LANE WEAVE
- TC-17 TRAFFIC CONTROL FOR FREEWAY SHOULDER CLOSURES AND PARTIAL RAMP CLOSURES
- 701400-10 APPROACH TO LANE CLOSURE, FREEWAY/EXPRESSWAY
- 701401-12 LANE CLOSURE, FREEWAY/EXPRESSWAY
- 701411-09 LANE CLOSURE, MULTILANE, AT ENTRANCE OR EXIT RAMP, FOR SPEEDS ≥ 45 MPH
- 701428-01 TRAFFIC CONTROL, SETUP AND REMOVAL, FREEWAY/EXPRESSWAY
- 701446-11 TWO LANE CLOSURE, FREEWAY/EXPRESSWAY
- 701901-08 TRAFFIC CONTROL DEVICES

STAGE 1

CONSTRUCTION:

REPAIRS ON THE SOUTHBOUND HALF THE BRIDGE.

TRAFFIC:

TRAFFIC ONE LANE IN EACH DIRECTION AND SHIFTED ONTO THE NORTHBOUND HALF OF THE BRIDGE.

INSTALL TRAFFIC CONTROL DEVICES IN ACCORDANCE WITH THE APPLICABLE DETAILS, STANDARDS, AND PLANS.

APPLICABLE DISTRICT ONE DETAILS AND IDOT HIGHWAY STANDARD DRAWINGS:

- TC-10 TRAFFIC CONTROL PROTECTION FOR SIDE ROADS, INTERSECTIONS, AND DRIVEWAYS
- TC-14 TRAFFIC CONTROL AND PROTECTION AT TURN BAYS (TO REMAIN OPEN TO TRAFFIC)
- TC-16 SHORT TERM PAVEMENT MARKING LETTERS AND SYMBOLS
- TC-22 ARTERIAL ROAD INFORMATION SIGN
- TC-26 DRIVEWAY ENTRANCE SIGNING
- 701301-04 LANE CLOSURE, 2L, 2W, SHORT TIME OPERATIONS
- 701311-03 LANE CLOSURE, 2L, 2W, MOVING OPERATIONS - DAY ONLY
- 701321-18 LANE CLOSURE, 2L, 2W, BRIDGE REPAIR WITH BARRIER
- 701501-06 URBAN LANE CLOSURE, 2L, 2W, UNDIVIDED
- 701701-10 URBAN LANE CLOSURE, MULTILANE INTERSECTION
- 701801-06 SIDEWALK, CORNER OR CROSSWALK CLOSURE
- 701901-08 TRAFFIC CONTROL DEVICES
- 704001-08 TEMPORARY CONCRETE BARRIER

STAGE 2

CONSTRUCTION:

REPAIRS ON THE NORTHBOUND HALF THE BRIDGE.

TRAFFIC:

TRAFFIC ONE LANE IN EACH DIRECTION AND SHIFTED ONTO THE SOUTHBOUND HALF OF THE BRIDGE.

INSTALL TRAFFIC CONTROL DEVICES IN ACCORDANCE WITH THE APPLICABLE DETAILS AND STANDARDS.

APPLICABLE DISTRICT ONE DETAILS AND IDOT HIGHWAY STANDARD DRAWINGS:

- TC-10 TRAFFIC CONTROL PROTECTION FOR SIDE ROADS, INTERSECTIONS, AND DRIVEWAYS
- TC-14 TRAFFIC CONTROL AND PROTECTION AT TURN BAYS (TO REMAIN OPEN TO TRAFFIC)
- TC-16 SHORT TERM PAVEMENT MARKING LETTERS AND SYMBOLS
- TC-22 ARTERIAL ROAD INFORMATION SIGN
- TC-26 DRIVEWAY ENTRANCE SIGNING
- 701301-04 LANE CLOSURE, 2L, 2W, SHORT TIME OPERATIONS
- 701311-03 LANE CLOSURE, 2L, 2W, MOVING OPERATIONS - DAY ONLY
- 701321-18 LANE CLOSURE, 2L, 2W, BRIDGE REPAIR WITH BARRIER
- 701501-06 URBAN LANE CLOSURE, 2L, 2W, UNDIVIDED
- 701701-10 URBAN LANE CLOSURE, MULTILANE INTERSECTION
- 701801-06 SIDEWALK, CORNER OR CROSSWALK CLOSURE
- 701901-08 TRAFFIC CONTROL DEVICES
- 704001-08 TEMPORARY CONCRETE BARRIER

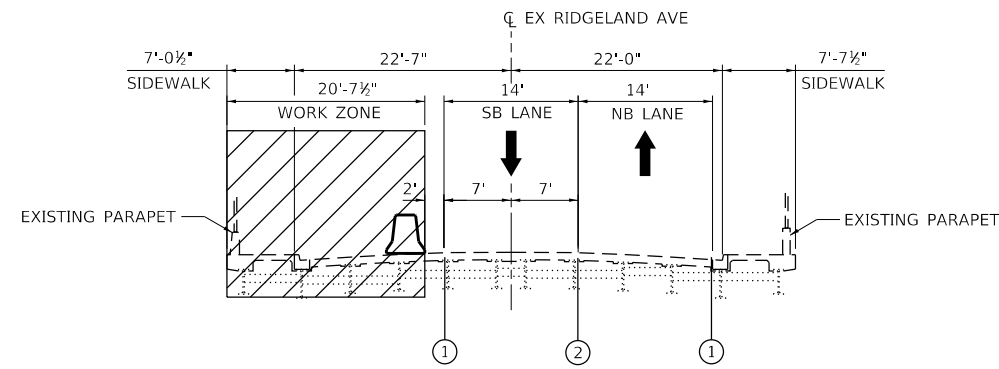
STAGE 3 - DETOUR

CONSTRUCTION:

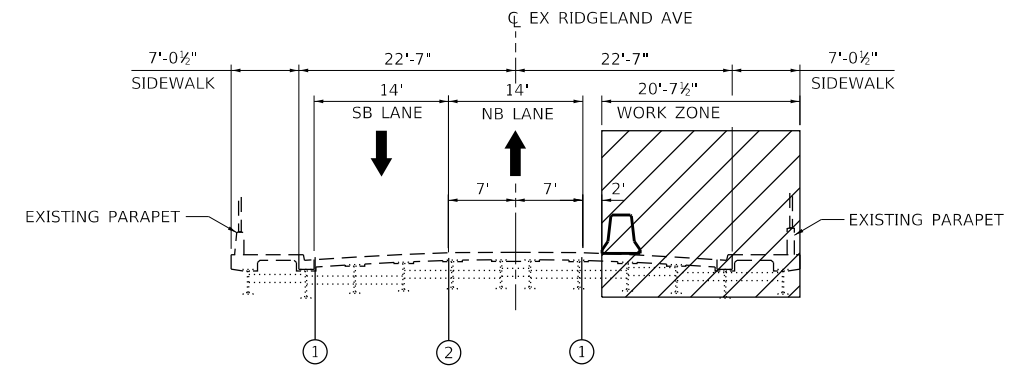
REPAIRS ON THE EXPANSION JOINTS ACROSS THE BRIDGE.

TRAFFIC:

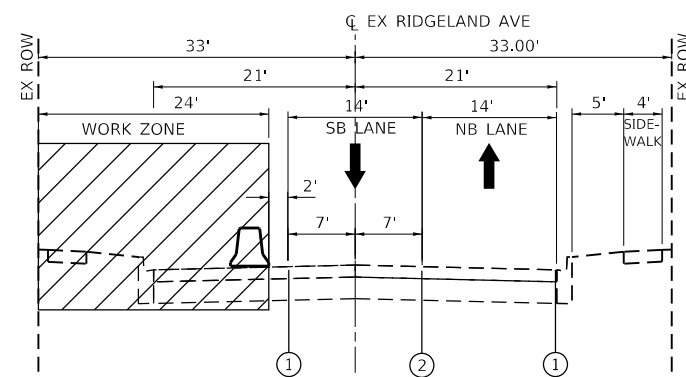
FOR WEEKEND OPERATIONS, CLOSE THE BRIDGE USING THE DETOUR PLAN



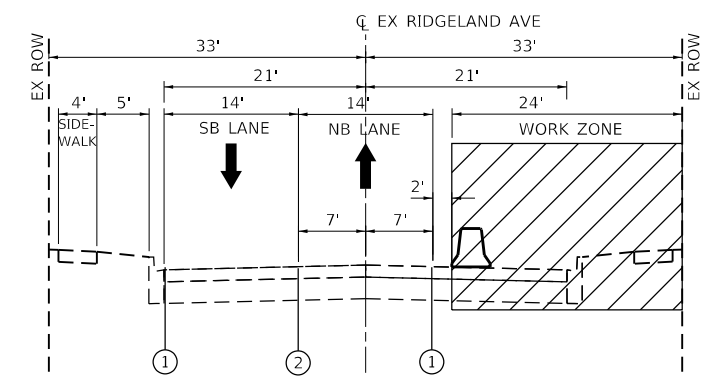
STAGE 1
STA XX+XX TO STA XX+XX



STAGE 2
STA XX+XX TO STA XX+XX



STAGE 1
STA 11+86 TO STA 15+30



STAGE 2
STA 11+86 TO STA 15+30

LEGEND:

- EXISTING PAVEMENT
- WORK AREA
- DIRECTION OF TRAFFIC
- TEMPORARY CONCRETE BARRIER (70400100)

- ① PAVEMENT MARKING TAPE, TYPE IV 4" (SOLID WHITE) (70300904)
- ② PAVEMENT MARKING TAPE, TYPE IV 4" (DOUBLE YELLOW) 11" C-C (70300904)

USER: idove
C:\PLOT\DRIVER\...
FILE NAME: PLOT_209_004_IDOT_PTB_190_14_Phase II_Voc-Var-Detour-WO_18_62N03-CADD\CADD_Sheets\162N03-rlc-mc09-bridgeband-1-plc.dgn



PLOT DRIVER = pdfNOLAYERSbw.plt	DESIGNED - JWD	REVISED 02/23/2021 JWD
PEN TABLE = D162N03-PLOT.tbl	DRAWN - JWD	REVISED -
PLOT SCALE = 20.0000 ' / in.	CHECKED - PJM	REVISED -
PLOT DATE = 2/23/2021 9:42:15 AM	DATE - 02/02/2021	REVISED -

**STATE OF ILLINOIS
DEPARTMENT OF TRANSPORTATION**

MAINTENANCE OF TRAFFIC	
RIDGELAND AVE – SEQUENCE OF CONSTRUCTION & TYPICAL SECTIONS	
SCALE:	SHEET OF SHEETS STA. TO STA.

REVISED SHEET 2/23/2021		F.A.I. RTE.	SECTION	COUNTY	TOTAL SHEETS	SHEET NO.
		290	2020-233-BR	COOK	40	8
					CONTRACT NO. 62N03	
					ILLINOIS FED. AID PROJECT	

GENERAL NOTES

Plan dimensions and details relative to existing plans are subject to nominal construction variations. The Contractor shall field verify existing dimensions and details affecting new construction and make necessary approved adjustments prior to construction or ordering of materials. Such variations shall not be cause for additional compensation for a change in scope of the work, however, the Contractor will be paid for the quantity actually furnished at the unit price bid for the work.

Concrete repairs shall receive final surface finish according to Article 420.09(e)(1). Cost included with the appropriate repair item.

INDEX OF SHEETS

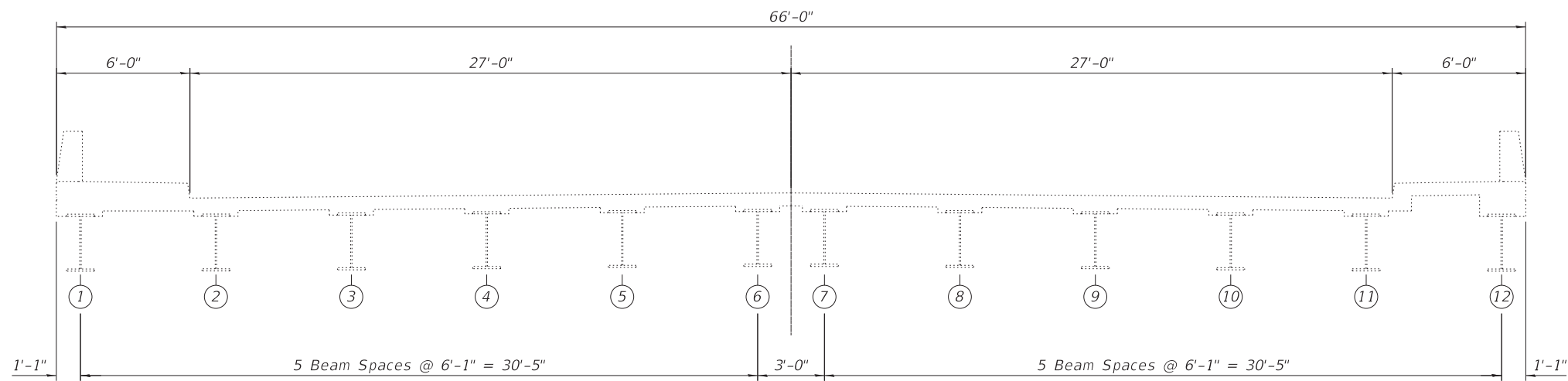
1. General Plan and Elevation
2. General Data
3. Deck & Joint Repair Details
4. Protective Shield Details
5. Expansion Joint Details

SCOPE OF WORK

1. Expansion joint nosing repairs.
2. Expansion joints replacement.
3. Deck slab repairs.
4. Protective shield installation and removal.
5. Approach slab repairs.

TOTAL BILL OF MATERIAL

ITEM	UNIT	TOTAL
Concrete Removal	Cu. Yd.	2.2
Protective Shield	Sq. Yd.	29
Prefomed Joint Seal 1½"	Foot	162
Approach Slab Repair (Partial Depth)	Sq. Yd.	8
Deck Slab Repair (Full Depth, Type I)	Sq. Yd.	1
Deck Slab Repair (Partial)	Sq. Yd.	2
Polymer Concrete	Cu. Ft.	58.4



EXISTING BRIDGE CROSS SECTION
Looking south

COPYRIGHT © 2019, BY BAXTER & WOODMAN, INC.
 STATE OF ILLINOIS, PROFESSIONAL DESIGN FIRM
 LICENSE NO. - 184-001121 - EXPIRES 4/30/2020
 MODEL: Default
 FILE NAME: I:\Crystal Lake\LDOT\190508-Various SE3\CAD\WO70160706-62N03-002-GENDATA.dgn



USER NAME = morrig	DESIGNED -	REVISED - 2/22/2021 BLB
	CHECKED -	REVISED -
PLOT SCALE = 0:1.0000 " = 1" / in.	DRAWN -	REVISED -
PLOT DATE = 2/22/2021	DATE - 02/22/2021	REVISED -

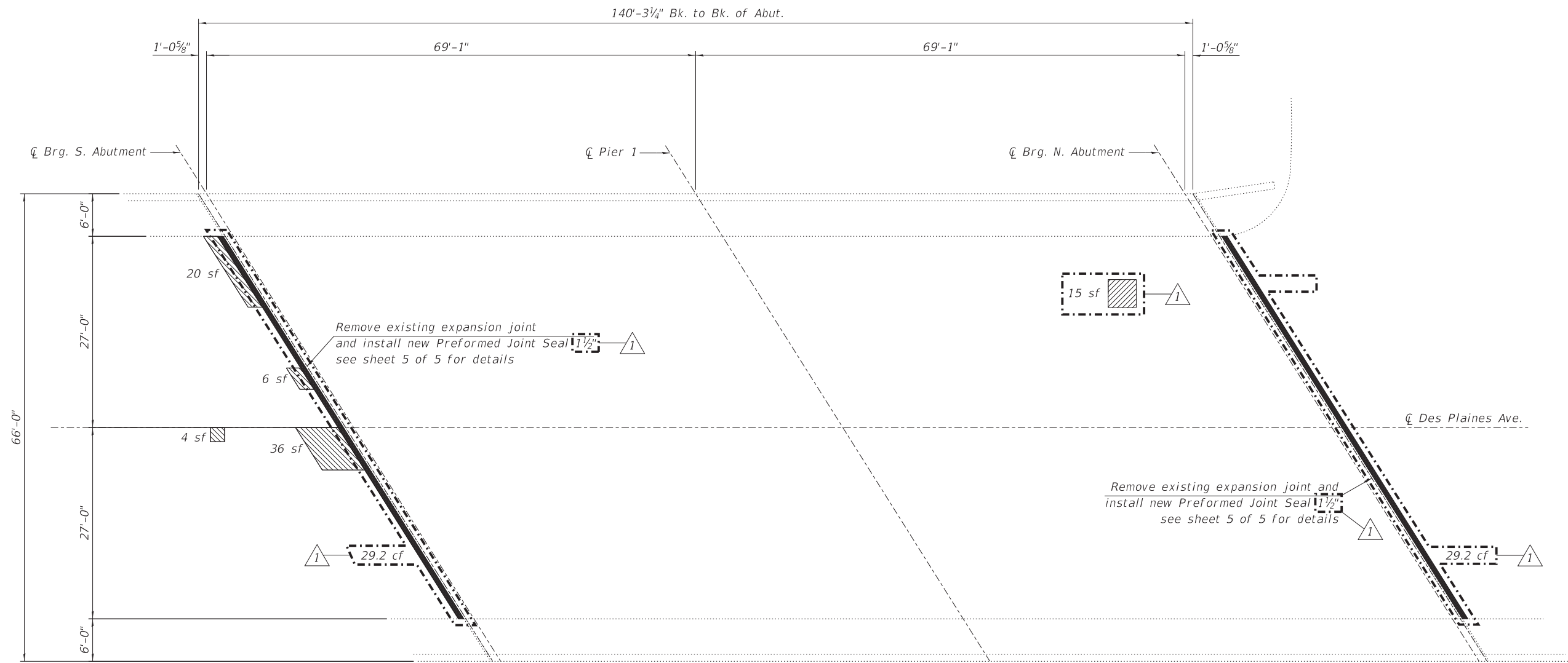
STATE OF ILLINOIS
DEPARTMENT OF TRANSPORTATION

GENERAL DATA
STRUCTURE NO. 016-0706 (DES PLAINES AVE.)

SHEET 2 OF 5 SHEETS

F.A.I. RTE.	SECTION	COUNTY	TOTAL SHEETS	SHEET NO.
290	2020-233-BR	COOK	40	15
			CONTRACT NO. 62N03	
ILLINOIS				

REVISED SHEET 2/23/2021

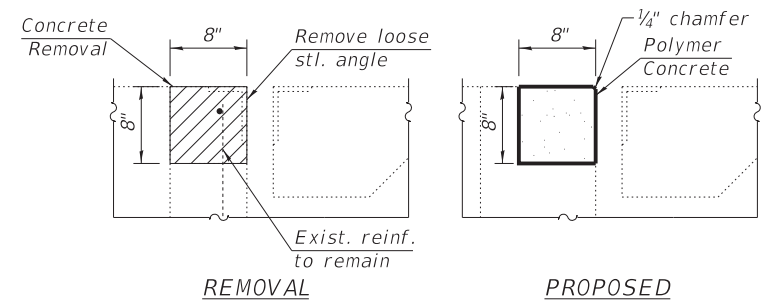


PLAN

LEGEND

- Deck Slab Repair (Partial)
- Approach Slab Repair (Partial Depth)
- Polymer Concrete

Notes:
 Existing reinforcement shall be cleaned and incorporated into the new construction. Cost included with Concrete Removal.
 Cost for steel angle removal is included with Concrete Removal.
 Areas of deck repairs shown are estimated. Actual repair areas shall be determined in the field by the Engineer.
 A nominal full depth deck repair quantity has been provided as a guide for bidding purposes. Actual full depth repair areas shall be determined in the field by the Engineer if needed.



TYPICAL JOINT SECTION AT POLYMER CONCRETE REPAIR
 (Dimensions are at right angles to abutment)

BILL OF MATERIAL

Item	Unit	Total
Concrete Removal	Cu. Yd.	2.2
Approach Slab Repair (Partial Depth)	Sq. Yd.	8
Deck Slab Repair (Full Depth, Type I)	Sq. Yd.	1
Deck Slab Repair (Partial)	Sq. Yd.	2
Polymer Concrete	Cu. Ft.	58.4

COPYRIGHT © 2019, BY BAXTER & WOODMAN, INC.
 STATE OF ILLINOIS, PROFESSIONAL DESIGN FIRM
 LICENSE NO. - 184-001121 - EXPIRES 4/30/2020
 MODEL: Default
 FILE NAME: I:\Crystal Lake\LDOT\190508-Variou SE3\CAD\W070160706-62N03-003-DECKREPAIR.dgn



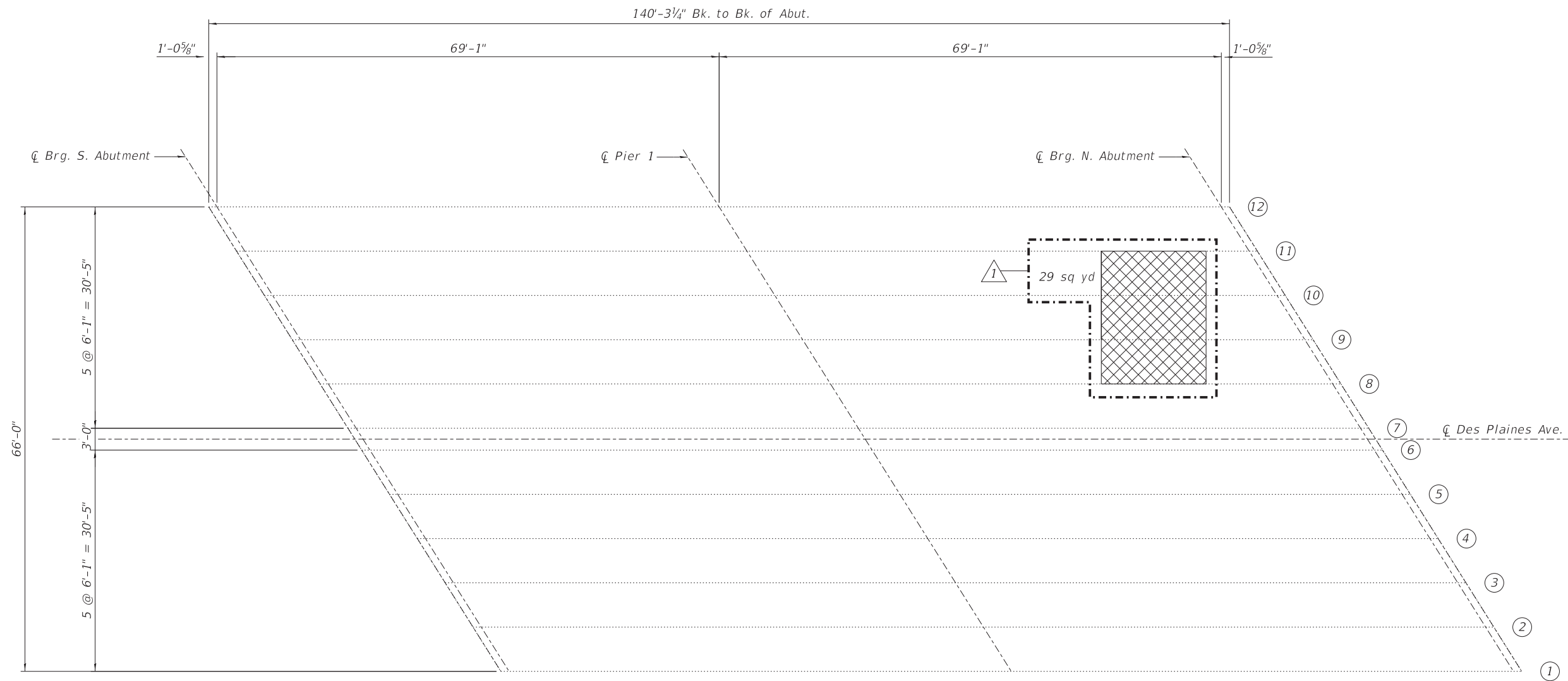
USER NAME = morrig	DESIGNED -	REVISD -	2/22/2021 BLB
	CHECKED -	REVISD -	
PLOT SCALE = 0:1.0000 "/>			
PLOT DATE = 2/22/2021	DATE - 02/22/2021	REVISD -	

STATE OF ILLINOIS
 DEPARTMENT OF TRANSPORTATION

DECK & JOINT REPAIR DETAILS
 STRUCTURE NO. 016-0706 (DES PLAINES AVE.)



SHEET 3 OF 5 SHEETS

F.A.I. RTE.	SECTION	COUNTY	TOTAL SHEETS	SHEET NO.
290	2020-233-BR	COOK	40	16
			CONTRACT NO. 62N03	
ILLINOIS				



EXISTING FRAMING PLAN

LEGEND

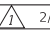
-  Protective Shield
-  Beam Number

BILL OF MATERIAL

Item	Unit	Total
Protective Shield	Sq. Yd.	29

COPYRIGHT © 2019 BY BAXTER & WOODMAN, INC.
 STATE OF ILLINOIS, PROFESSIONAL DESIGN FIRM
 LICENSE NO. - 184-001121 - EXPIRES 4/30/2020
 MODEL: Default
 FILE NAME: I:\Crystal_Lake\LDOT\190508-Variouous SE3\CAD\W070160706-62N03-004-PROSHIELD.dgn



USER NAME = morrig	DESIGNED -	REVISED -  2/22/2021 BLB
PLOT SCALE = 0:1.0000 " = 1/8" / in.	CHECKED -	REVISED -
PLOT DATE = 2/22/2021	DRAWN -	REVISED -
	DATE - 02/22/2021	REVISED -

**STATE OF ILLINOIS
DEPARTMENT OF TRANSPORTATION**

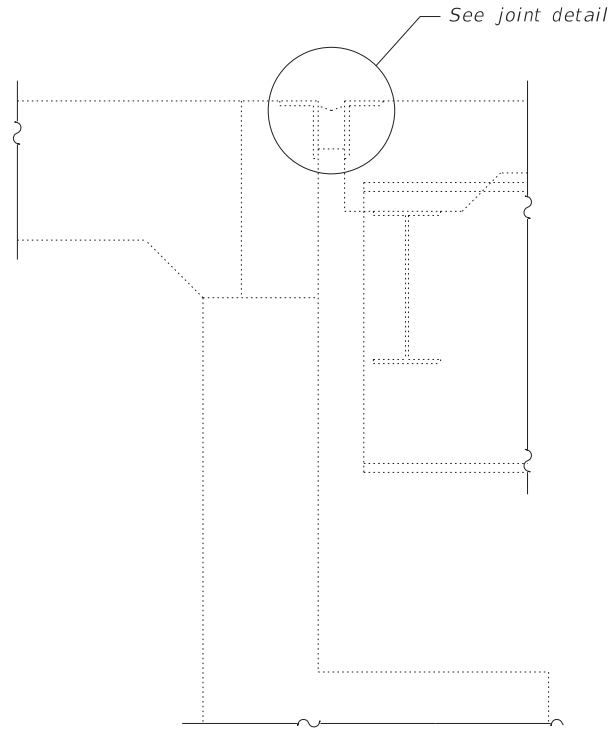
**PROTECTIVE SHIELD DETAILS
STRUCTURE NO. 016-0706 (DES PLAINES AVE.)**

SHEET 4 OF 5 SHEETS

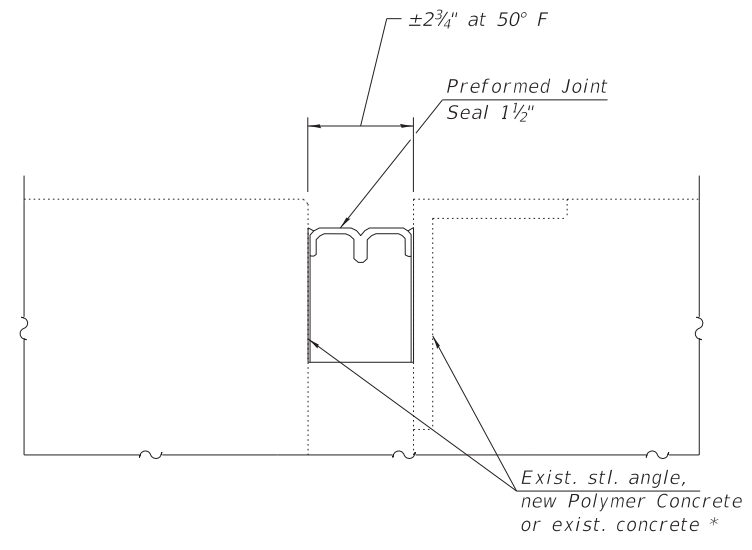
F.A.I. RTE.	SECTION	COUNTY	TOTAL SHEETS	SHEET NO.
290	2020-233-BR	COOK	40	17
			CONTRACT NO. 62N03	

 REVISED SHEET 2/23/2021

COPYRIGHT © 2019, BY BAXTER & WOODMAN, INC.
 STATE OF ILLINOIS, PROFESSIONAL DESIGN FIRM
 LICENSE NO. - 184-001121 - EXPIRES 4/30/2020
 MODEL: Default
 FILE NAME: I:\Crystal Lake\LDOT\190508-Various SE3\CAD\WO70160706-62N03-005-EXPJOINT.dgn

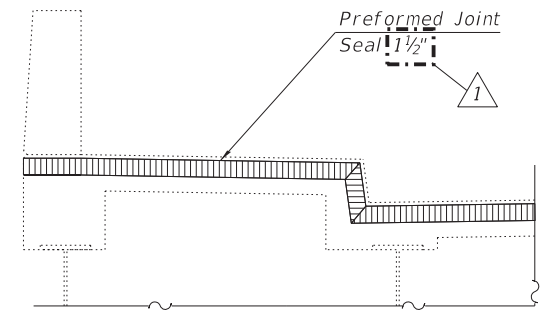


TYPICAL SECTION AT ABUTMENTS



JOINT DETAIL

* Install Preformed Joint Seal against existing concrete at sidewalks.



TYPICAL SECTION THRU SIDEWALK

Notes:
 Removal of the existing seal is included in the cost of Preformed Joint Seal.
 See sheet 3 of 8 for Polymer Concrete repair locations.

BILL OF MATERIAL

Item	Unit	Total
Preformed Joint Seal 1 1/2"	Foot	162

BAXTER & WOODMAN Consulting Engineers	USER NAME = morrig	DESIGNED -	REVISED - 2/22/2021 BLB
	PLOT SCALE = 0.0833' / in.	CHECKED -	REVISED -
	PLOT DATE = 2/22/2021	DRAWN -	REVISED -
		DATE - 02/22/2021	REVISED -

STATE OF ILLINOIS
DEPARTMENT OF TRANSPORTATION

EXPANSION JOINT DETAILS
STRUCTURE NO. 016-0706 (DES PLAINES AVE.)
 SHEET 5 OF 5 SHEETS

	REVISED SHEET 2/23/2021				
	F.A.I. RTE.	SECTION	COUNTY	TOTAL SHEETS	SHEET NO.
290	2020-233-BR	COOK	40	18	
CONTRACT NO. 62N03					
		ILLINOIS			

INTENTIONALLY LEFT BLANK

USER: jdoe
 C:\PLOT\DOT\PTB_190_1.dwg
 FILE NAME: PLOT_209_004.IDOT.PTB_190_1.dwg
 Phase II Vehicle Detection
 18_62N03-CADD\CADD_Sheets\18_62N03-ctr-dwg-01-TC05.dwg

ENTIRE SHEET REVISED 2/23/2021



PLOT DRIVER = pdfNOLAYERsbw.plt	DESIGNED - JWD	REVISED 02/23/2021 JWD
PEN TABLE = D162N03-PLOT.tbl	DRAWN - JWD	REVISED -
PLOT SCALE = 2.0000' / in.	CHECKED - PJM	REVISED -
PLOT DATE = 2/23/2021 9:42:16 AM	DATE - 02/02/2021	REVISED -

DELETED SHEET
STATE OF ILLINOIS
DEPARTMENT OF TRANSPORTATION

TRAFFIC CONTROL DETAILS FOR FREEWAY
CENTER LANE CLOSURE SHOULDER LANE

SCALE: SHEET OF SHEETS STA. TO STA.

F.A.I. RTE.	SECTION	COUNTY	TOTAL SHEETS	SHEET NO.
290	2020-233-BR	COOK	40	39
CONTRACT NO. 62N03			ILLINOIS FED. AID PROJECT	