

STATE OF ILLINOIS
DEPARTMENT OF TRANSPORTATION

F.A.I. SHEET NO.	SECTION	COUNTY	TOTAL SHEETS	SHEET NO.
I-80	2020 254 PP	WILL	18	1
		ILLINOIS	CONTRACT NO. 62N21	

FOR INDEX OF SHEETS, SEE SHEET NO. 2

THIS IMPROVEMENT IS LOCATED
IN THE CITY OF JOLIET AND THE
VILLAGE OF SHOREWOOD

PROPOSED
HIGHWAY PLANS

ROUTE FAI 80: I-80
KENDALL COUNTY LINE TO DES PLAINES RIVER
SECTION: 2020-254-PP
PATCHING
WILL COUNTY

TRAFFIC DATA:

PROJECT BEGINS TO LARKIN AVENUE

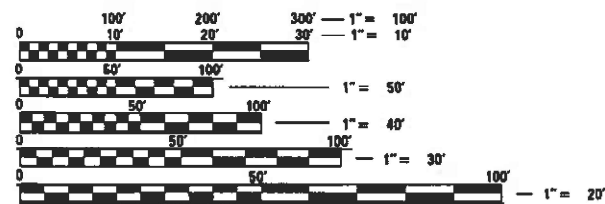
ADT (2019) = 57,350 VPD

SPEED LIMIT = 70 MPH

LARKIN AVENUE TO END OF PROJECT

ADT (2019) = 75,800 VPD

SPEED LIMIT = 55 MPH



FULL SIZE PLANS HAVE BEEN PREPARED USING STANDARD ENGINEERING SCALES. REDUCED SIZED PLANS WILL NOT CONFORM TO STANDARD SCALES. IN MAKING MEASUREMENTS ON REDUCED PLANS, THE ABOVE SCALES MAY BE USED.

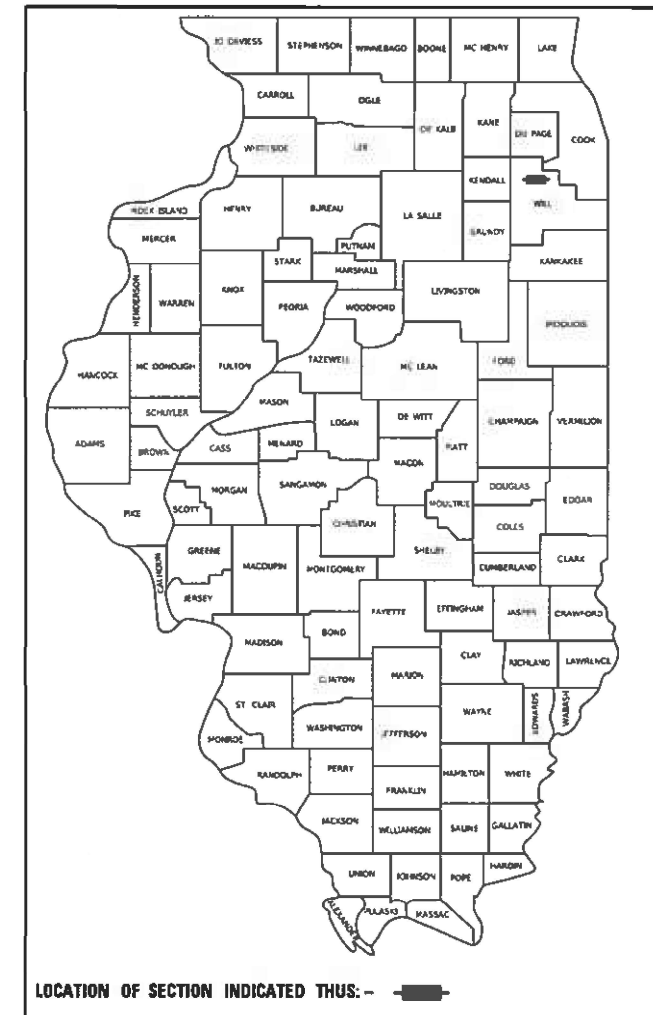
J.U.L.I.E.
JOINT UTILITY LOCATION INFORMATION FOR EXCAVATORS
1-800-892-0123
OR 811

PROJECT ENGINEER: VESELIN VELICHKOV (847) 705-4432
PROJECT MANAGER: FAWAD AQUEEL (847) 705-4247

CONTRACT NO. 62N21

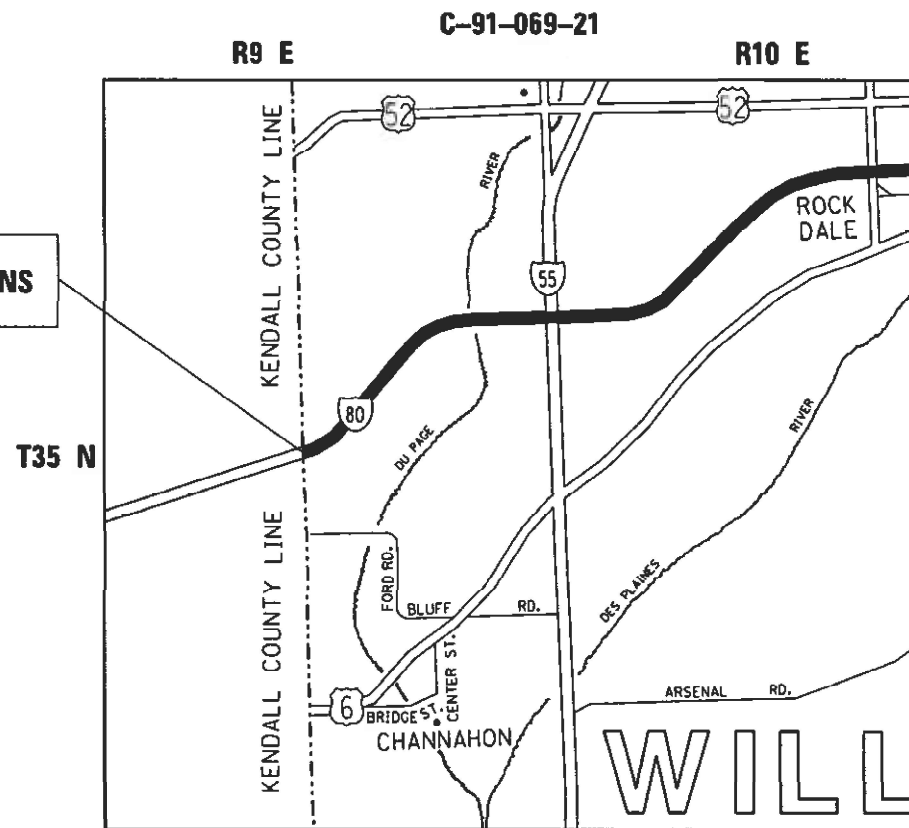
GROSS & NET LENGTH = 49,632 FT. = 9.40 MILES

D-91-064-21



LOCATION OF SECTION INDICATED THIS: - [shaded area] -

IMPROVEMENT BEGINS



IMPROVEMENT ENDS

STATE OF ILLINOIS
DEPARTMENT OF TRANSPORTATION
SUBMITTED January 24, 2021
Joel Ries REGIONAL ENGINEER
January 29, 2021
Scott A. Elk ENGINEER OF DESIGN AND ENVIRONMENT
January 29, 2021
James J. Gu DIRECTOR OF HIGHWAYS PROJECT IMPLEMENTATION 13

PRINTED BY THE AUTHORITY
OF THE STATE OF ILLINOIS

INDEX OF SHEETS

STATE STANDARDS

GENERAL NOTES

SHEET NO.	DESCRIPTION	STANDARD NO.	DESCRIPTION
1	COVER SHEET		
2	INDEX OF SHEETS, STATE STANDARDS & GENERAL NOTES	000001-08	STANDARD SYMBOLS, ABBREVIATIONS AND PATTERNS
3	SUMMARY OF QUANTITIES	701001-02	OFF-RD OPERATIONS, 2L, 2W, MORE THAN 15' (4.5 m) AWAY
4	TYPICAL SECTIONS	701400-10	APPROACH TO LANE CLOSURE, FREEWAY / EXPRESSWAY
		701401-12	LANE CLOSURE, FREEWAY / EXPRESSWAY
5-6	SCHEDULE OF QUANTITIES	701411-09	MULTILANE, TRAFFIC CONTROL AT ENTRANCE OR EXIT RAMP, FOR SPEEDS ≥ 45 MPH
7-12	TRAFFIC SYSTEM STANDARDS	701428-01	TRAFFIC CONTROL, SETUP AND REMOVAL, FREEWAY / EXPRESSWAY
13	TC-08 ENTRANCE AND EXIT RAMP CLOSURE DETAILS	701901-08	TRAFFIC CONTROL DEVICES
14	TC-09 TRAFFIC CONTROL DETAILS FOR FREEWAY SINGLE & MULTI-LANE WEAVE	780001-05	TYPICAL PAVEMENT MARKINGS
15-16	TC-12: MULTI-LANE FREEWAY PAVEMENT MARKING DETAILS		
17	TC-17: TRAFFIC CONTROL FOR SHOULDER CLOSURES AND PARTIAL RAMP CLOSURES		
18	TC-18: SIGNING FOR FLAGGING OPERATIONS AT WORK ZONE OPENINGS		

- BEFORE STARTING ANY EXCAVATION, THE CONTRACTOR SHALL CALL "JULIE" AT (800) 892-0123 OR 811 FOR FIELD LOCATIONS OF BURIED ELECTRIC, TELEPHONE, AND GAS FACILITIES. (48 HOUR NOTIFICATION REQUIRED)
- THE CONTRACTOR SHALL COORDINATE CONSTRUCTION ACTIVITIES WITH UTILITY COMPANIES, CITY OF JOLIET AND THE VILLAGE OF SHOREWOOD.
- THE CONTRACTOR SHALL CONTACT THE DISTRICT ONE EXPRESSWAY TRAFFIC CONTROL SUPERVISOR AT (847) 705-4155 A MINIMUM OF 72 HOURS IN ADVANCE OF BEGINNING WORK.
- THE RESIDENT ENGINEER SHALL CONTACT REGINA COOPER, AREA EXPRESSWAY TRAFFIC ENGINEER, VIA E-MAIL AT REGINA.COOPER@ILLINOIS.GOV, A MINIMUM OF 2 WEEKS PRIOR TO PLACEMENT OF PERMANENT PAVEMENT MARKINGS.
- BEFORE BEGINNING ANY WORK, THE CONTRACTOR SHALL RETAIN AND RECORD FOR FUTURE REFERENCE, ALL EXISTING PAVEMENT MARKING LINES (AND RAISED REFLECTIVE PAVEMENT MARKERS) IN ORDER THAT THESE LOCATIONS CAN BE RE-ESTABLISHED FOR STRIPING. EXACT LOCATIONS OF ALL PAVEMENT MARKINGS SHALL BE AS DIRECTED BY THE RESIDENT ENGINEER.
- ALL DAMAGE TO EXISTING PAVEMENT MARKINGS OR RAISED REFLECTIVE PAVEMENT MARKERS OUTSIDE THE REMOVAL LINE SHOWN ON THE PLANS SHALL BE REPLACED AT NO ADDITIONAL COST TO THE DEPARTMENT.
- THE CONTRACTOR SHALL REQUEST AND GAIN APPROVAL FROM THE ILLINOIS DEPARTMENT OF TRANSPORTATION'S EXPRESSWAY TRAFFIC OPERATION ENGINEER AT www.idotlcs.com TWENTY-FOUR (24) HOURS IN ADVANCE OF ALL DAILY LANE, RAMP, AND SHOULDER CLOSURES AND 7 DAYS IN ADVANCE OF ALL PERMANENT AND WEEKEND CLOSURES ON ALL FREEWAYS AND/OR EXPRESSWAYS IN DISTRICT ONE. THIS ADVANCE NOTIFICATION IS CALCULATED BASED ON A WORK WEEK OF MONDAY THROUGH FRIDAY, AND SHALL NOT INCLUDE WEEKENDS OR HOLIDAYS.
- IT IS ANTICIPATED THAT THIS CONTRACT WILL BE CONSTRUCTED WITH OTHER ROADWAY PROJECTS IN THE SAME AREA. THE CONTRACTOR SHALL SCHEDULE HIS WORK IN ORDER TO MINIMIZE ANY CONFLICTS THAT MAY ARISE BETWEEN CONTRACTS AS SPECIFIED IN ARTICLE 105.08 OF THE STANDARD SPECIFICATIONS. NO ADDITIONAL COMPENSATION WILL BE ALLOWED FOR DELAYS OR INCONVENIENCES RESULTING FROM ACTIVITIES OF OTHER CONTRACTORS.
- CLASS D PATCHING WILL BE PERFORMED BEFORE LANE PATCHING AND LONGITUDINAL PARTIAL DEPTH PATCHING.
- CLASS D PATCHING AREAS SHALL ALSO RECEIVE HMA SURFACE REMOVAL 2" AND HMA SC 9.5 D N70 2" REPLACEMENT AT THE TIME LANE PATCHING OPERATIONS ARE CONDUCTED.
- LANE PATCHING, LONGITUDINAL PARTIAL DEPTH, AND FULL DEPTH PATCHING WILL BE LAID OUT IN THE FIELD BY THE RESIDENT ENGINEER.
- LIMIT OF IMPROVEMENT AT RAMP IS TO THE TIP OF THE GORE.
- DO NOT SCALE PLANS FOR CONSTRUCTION DIMENSIONS.

HOT-MIX ASPHALT MIXTURE REQUIREMENTS			QUALITY MANAGEMENT PROGRAM (QMP)
MIXTURE TYPE	AIR VOIDS @ Ndes		
INTERMITTENT RESURFACING (LANE PATCHING)			
HOT-MIX ASPHALT SURFACE COURSE, IL-9.5, MIX "D" N70, 2"	4.0% AT 70 GYR		QC/QA
PATCHING			
CLASS D PATCHES (HOT-MIX ASPHALT BINDER IL-19.0)	4.0% AT 70 GYR		QC/QA
LONGITUDINAL PARTIAL DEPTH PATCHING			
HOT-MIX ASPHALT SURFACE COURSE, IL-9.5, MIX "D" N70, 2"	4.0% AT 70 GYR		QC/QA
QMP DESIGNATION: QUALITY CONTROL/QUALITY ASSURANCE (QC/QA); QUALITY CONTROL FOR PERFORMANCE (QCP)			

- NOTE 1: THE UNIT WEIGHT USED TO CALCULATE ALL HMA SURFACE MIXTURE QUANTITIES IS 112 LBS/SQ YD/IN.
- NOTE 2: THE "AC TYPE" FOR POLYMERIZED HMA MIXES SHALL BE "SBS/SBR PG 76-22" AND FOR NON-POLYMERIZED HMA THE "AC TYPE" SHALL BE "PG 64-22" UNLESS MODIFIED BY SPECIAL PROVISIONS. FOR USE OF RECYCLED MATERIALS SEE SPECIAL PROVISIONS.
- NOTE 3: QUALITY MANAGEMENT PROGRAM (QMP) IDENTIFIES THE PARTICULAR QUALITY CONTROL SPECIFICATION THAT APPLIES TO THE HMA MIXTURE.

MODEL: Default FILE NAME: p:\data\mroom\dot\illinois\dot\Documents\DOT_Offices\Distric... 1\Projects\ID\66421\CADDData\Design\ID\66421-zh-generac.dgn

USER NAME = qarutnm	DESIGNED -	REVISED -
	DRAWN -	REVISED -
PLOT SCALE = 100,0000 ' / in.	CHECKED -	REVISED -
PLOT DATE = 2/3/2021	DATE -	REVISED -

**STATE OF ILLINOIS
DEPARTMENT OF TRANSPORTATION**

**INDEX OF SHEETS, STATE STANDARDS & GENERAL NOTES
I-80 (KENDALL COUNTY LINE TO DES PLAINES RIVER ROAD)**

SCALE: SHEET OF SHEETS STA. TO STA.

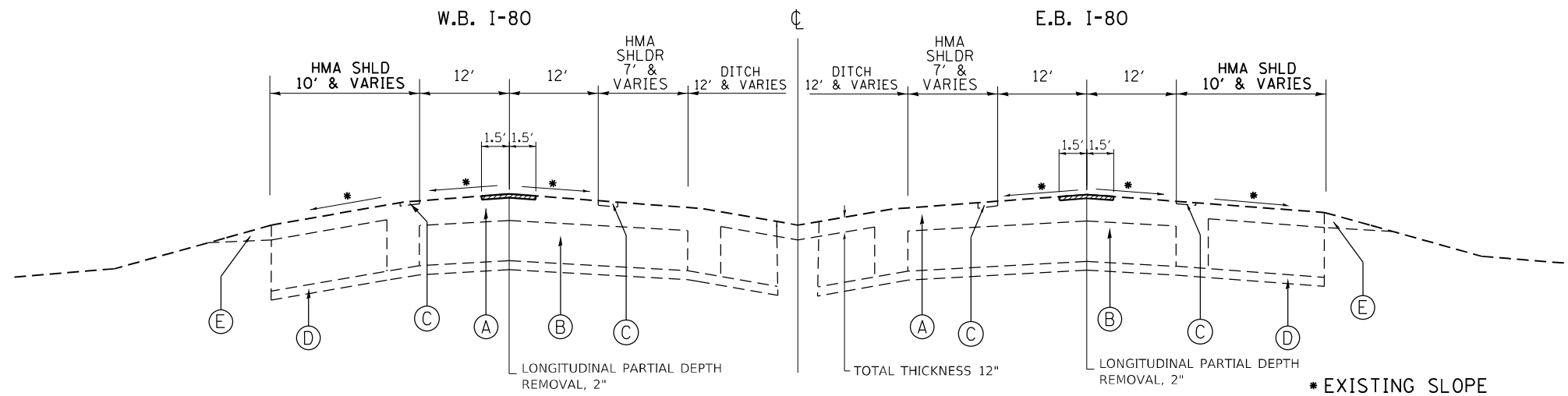
F.A.I. RTE.	SECTION	COUNTY	TOTAL SHEETS	SHEET NO.
I-80	2020-254-PP	WILL	18	2
CONTRACT NO. 62N21				
ILLINOIS FED. AID PROJECT				

SUMMARY OF QUANTITIES				CONSTRUCTION TYPE CODE					SUMMARY OF QUANTITIES				CONSTRUCTION TYPE CODE				
CODE NO	ITEM	UNIT	TOTAL QUANTITIES URBAN	0005 100% STATE					CODE NO	ITEM	UNIT	TOTAL QUANTITIES URBAN	0005 100% STATE				
40600290	BITUMINOUS MATERIALS (TACK COAT)	POUND	540	540					* 78009004	MODIFIED URETHANE PAVEMENT MARKING - LINE 4"	FOOT	2035	2035				
40604062	HOT-MIX ASPHALT SURFACE COURSE, IL-9.5, MIX "D", N70	TON	100	100					* 78009005	MODIFIED URETHANE PAVEMENT MARKING - LINE 5"	FOOT	100	100				
44000157	HOT-MIX ASPHALT SURFACE REMOVAL, 2"	SO YD	875	875					* 78009008	MODIFIED URETHANE PAVEMENT MARKING - LINE 8"	FOOT	100	100				
x4405020	LONGITUDINAL PARTIAL DEPTH REMOVAL 2"	FOOT	950	950					* 78009012	MODIFIED URETHANE PAVEMENT MARKING - LINE 12"	FOOT	100	100				
44201785	CLASS D PATCHES, TYPE I, 12 INCH	SO YD	10	10					* 78100100	RAISED REFLECTIVE PAVEMENT MARKER	EACH	15	15				
44201789	CLASS D PATCHES, TYPE II, 12 INCH	SO YD	120	120					78300200	RAISED REFLECTIVE PAVEMENT MARKER REMOVAL	EACH	15	15				
44201794	CLASS D PATCHES, TYPE III, 12 INCH	SO YD	70	70					* X1400337	WIRELESS IN PAVEMENT DETECTOR	EACH	5	5				
44201796	CLASS D PATCHES, TYPE IV, 12 INCH	SO YD	30	30					X7011015	TRAFFIC CONTROL AND PROTECTION (EXPRESSWAYS)	L SUM	1	1				
x4420900	LONGITUDINAL PARTIAL DEPTH PATCHING	TON	36	36					X7030005	TEMPORARY PAVEMENT MARKING REMOVAL	SO FT	715	715				
67000400	ENGINEER'S FIELD OFFICE, TYPE A	CAL MO	6	6					* X8730312	ELECTRIC CABLE IN CONDUIT, LEAD-IN, NO. 18 4/C, TWISTED, SHIELDED	FOOT	225	225				
67100100	MOBILIZATION	L SUM	1	1					* X8850102	INDUCTION LOOP	FOOT	950	950				
70107025	CHANGEABLE MESSAGE SIGN	CAL DA	180	180					Ø Z0076604	TRAINEES - TRAINING PROGRAM GRADUATE	HOURS	500	500				
70200100	NIGHTTIME WORK ZONE LIGHTING	L SUM	1	1													
70300904	PAVEMENT MARKING TAPE, TYPE IV 4"	FOOT	2035	2035													
70300905	PAVEMENT MARKING TAPE, TYPE IV 5"	FOOT	100	100													

* = SPECIALTY ITEMS

Ø 0042

REV-SEP



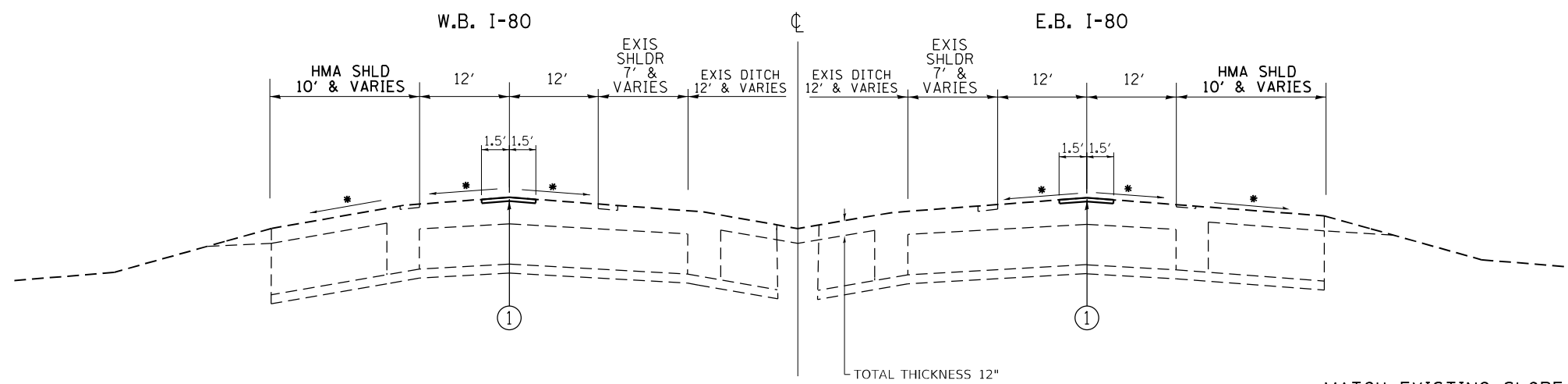
INTERSTATE 80
EXISTING TYPICAL SECTION

LEGEND - EXISTING:

- (A) HOT-MIX ASPHALT PAVEMENT
- (B) PORTLAND CEMENT CONCRETE PAVEMENT
- (C) SHOULDER RUMBLE STRIPS, 16 INCH
- (D) SUB-BASE GRANULAR MATERIAL
- (E) AGGREGATE WEDGE SHOULDER, TYPE B

NOTES:

- 1.) LOCATIONS OF PATCHING WILL BE DETERMINED IN THE FIELD BY THE RESIDENT ENGINEER.
- 2.) THE JOINT PATCH WIDTH SHALL BE 3 FT, THE LENGTH SHALL BE A MINIMUM OF 10 FT, AND THE DEPTH SHALL BE AS SHOWN ON THE PLANS.



INTERSTATE 80
PROPOSED TYPICAL SECTION

LEGEND - PROPOSED

- (1) LONGITUDINAL PARTIAL DEPTH PATCHING, 2"

FILE NAME =	USER NAME = qarutnm	DESIGNED -	REVISED -	STATE OF ILLINOIS DEPARTMENT OF TRANSPORTATION	TYPICAL SECTIONS I-80 (KENDALL COUNTY LINE TO DES PLAINES RIVER ROAD)				F.A.I. RTE.	SECTION	COUNTY	TOTAL SHEETS	SHEET NO.
p:\plnroom\dot.illinois.gov\PIDOT\Documents\IDOT Offices\District 1\Projects\010642\DRAWN\Design\0106421-sht-typical.dgn		DRAWN	REVISED -		I-80	2020-254-PP	WILL	18	4				
PLOT SCALE = 100.0000' / in.		CHECKED -	REVISED -		CONTRACT NO. 62N21								
PLOT DATE = 2/3/2021		DATE -	REVISED -		SCALE:	SHEET NO.	OF SHEETS	STA.	TO STA.	ILLINOIS FED. AID PROJECT			

WB & EB I-80 JOINT PATCHING

WB & EB I-80 CLASS D PATCHING

ROUTE:		I-80 Expressway (Kendall Co line to Des Plains River)					
CROSS STREET		DIRECTION (EB/WB) (NB/SB)	LANE NO. (1, 2, 3)	PAVEMENT	PAVEMENT	PATCH AREA (SQ FT)	PATCH AREA (SQ YD)
FROM	TO			PATCH WIDTH	PATCH LENGTH		
				3-ft	min 10-ft		
Desplaines River Bridge		WB	1	3	25	75	8
		WB	1	3	15	45	5
		WB	1	3	10	30	3
		WB	1	3	25	75	8
		WB	1	3	150	450	50
		WB	1	3	50	150	17
		WB	1	3	100	300	33
		WB	1	3	15	45	5
		WB	1	3	25	75	8
		WB	1	3	15	45	5
		WB	1	3	20	60	7
		WB	1	3	30	90	10
		WB	1	3	15	45	5
		WB	1	3	50	150	17
		WB	1	3	50	150	17
	Kendall County Line	WB	1	3	25	75	8
Kendall County Line		EB	1	3	20	60	7
		EB	1	3	20	60	7
		EB	1	3	10	30	3
		EB	1	3	10	30	3
		EB	1	3	10	30	3
		EB	1	3	10	30	3
		EB	2	3	25	75	8
		EB	2	3	15	45	5
		EB	2	3	10	30	3
	Desplaines River Bridge	EB	2	3	25	75	8
Desplaines River Bridge		WB	2	3	50	150	17
		WB	2	3	12	36	4
		WB	2	3	25	75	8
	Kendall County Line	WB	2	3	20	60	7
Additional 2% Quantity					18		6
		TOTAL:			950		317
					FT		SY

PATCHING INFORMATION									
Contract # 62N21									
I-80 (Kendall Co line to Des Plains River)									
Class D patching									
From	To	Direction	Lane No.	Width	Length	TYPE I	TYPE II	TYPE III	TYPE IV
Cross Street	Cross Street	NB,SB/EB,SB	(1, 2, 3)	FT	FT	Sq Yd	Sq Yd	Sq Yd	Sq Yd
				min 1 Lane	min 6-ft				
Desplaines River Bridge		WB	1	6	13		8.67		
	Kendall County Line	WB	1	6	13		8.67		
Kendall County Line		EB	1	6	13		8.67		
		EB	1	6	13		8.67		
		EB	2	11	13			15.89	
		EB	2	6	13		8.67		
		EB	2	6	13		8.67		
		EB	2	11	13			15.89	
	Desplaines River Bridge	EB	2	6	13		8.67		
Desplaines River Bridge		WB	2	11	13			15.89	
		WB	2	11	13			15.89	
		WB	2	6	10		6.67		
		WB	2	6	13		8.67		
		WB	2	6	13		8.67		
		WB	2	6	13		8.67		
		WB	2	6	6	4.00			
		WB	2	6	13		8.67		
		WB	2	6	13		8.67		
	Kendall County Line	WB	2	6	13		8.67		
Additional Quantity (Construction)									30.00
TOTAL						4.00	120.00	64.00	30.00

MODEL: Default
 FILE NAME: p:\data\m3000m.dwt\illinois.gov\PWIDOT\Documents\DOT_Office\Bldgrefc_1\Project\ID 106421\CADDData\Design\106421-2ht-schedule.dgn

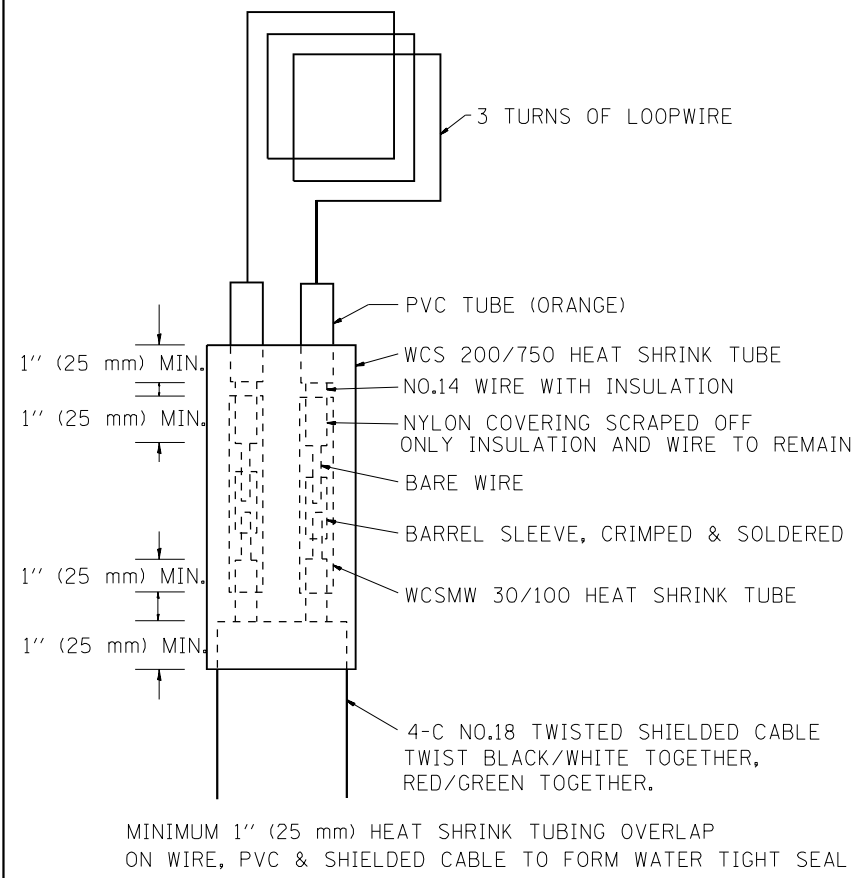
USER NAME = qarutnm	DESIGNED -	REVISED -
	DRAWN -	REVISED -
PLOT SCALE = 100,0000' / in.	CHECKED -	REVISED -
PLOT DATE = 1/10/2021	DATE -	REVISED -

**STATE OF ILLINOIS
DEPARTMENT OF TRANSPORTATION**

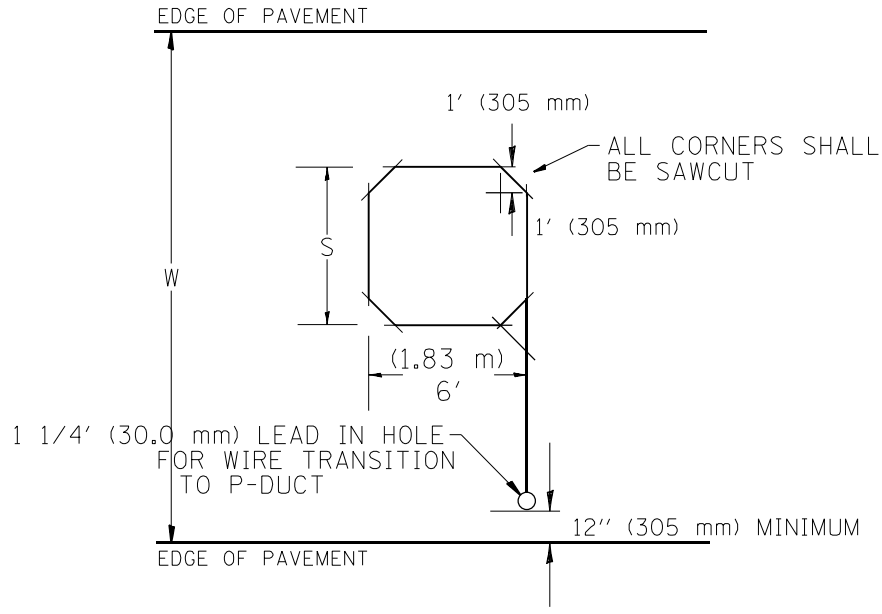
**SCHEDULE OF QUANTITIES
I-80 (KENDALL COUNTY LINE TO DES PLAINES RIVER ROAD)**

SCALE: SHEET OF SHEETS STA. TO STA.

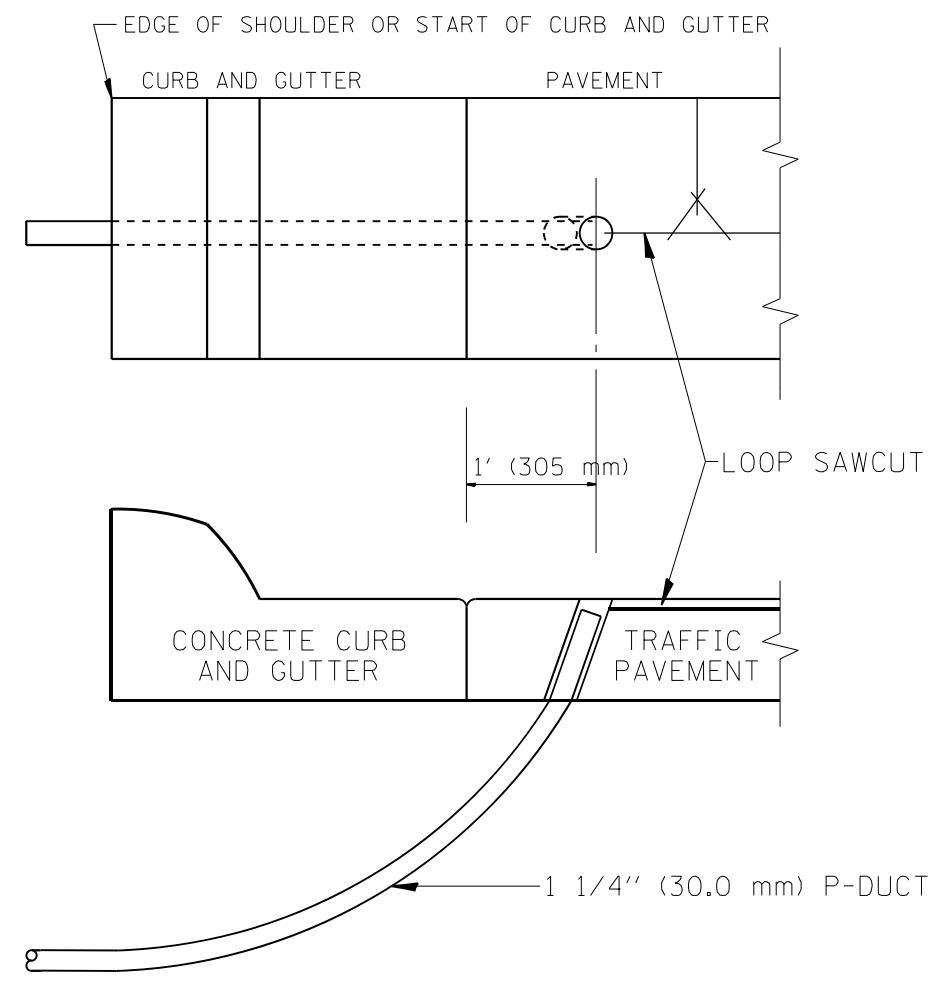
F.A.I. RTE.	SECTION	COUNTY	TOTAL SHEETS	SHEET NO.
I-80	2020-254-PP	WILL	18	6
ILLINOIS FED. AID PROJECT			CONTRACT NO. 62N21	



LOOP SPLICING REQUIREMENTS



TYPICAL "S" FT. BY 6' (1.83 m) INDUCTION LOOP SAWCUT LAYOUT FOR RAMPS



CURB AND GUTTER LOOP LEAD-IN TRANSITION DETAIL

NOTES

1. EACH LOOP SHALL BE SPLICED TO A 4-C NO.18 TWISTED SHIELDED LEAD IN WHEN 150' (45 m) OR MORE FROM CABINET.
2. LOOPS SHALL BE SPLICED IN HANDHOLES ONLY, OTHERWISE WRITTEN PERMISSION SHALL BE OBTAINED FROM TSC ENGINEER.
3. LOOPS SHALL NOT BE SPLICED IN SERIES.
4. EACH LOOP LEAD IN SHALL BE IDENTIFIED AND PERMANENTLY COLOR CODED IN THE COREHOLE, HANDHOLE & CABINETS THRU WHICH THEY ENTER OR PASS AND TAGGED WITH THE CORRECT NOMENCLATURES.

WIDTH (W)	WIDTH (S)
12' (3.7 m)	8' (2.5 m)
13' (4.0 m)	9' (2.8 m)
14' (4.3 m)	10' (3.1 m)
15' (4.6 m)	11' (3.4 m)
16' (4.9 m)	12' (3.7 m)
17' (5.2 m)	13' (4.0 m)
18' (5.5 m)	14' (4.3 m)
19' (5.8 m)	15' (4.6 m)
20' (6.1 m)	18' (4.9 m)
21' (6.4 m)	17' (5.2 m)
22' (6.7 m)	18' (5.5 m)
23' (7.0 m)	19' (5.8 m)
24' (7.3 m)	20' (6.1 m)
25' (7.6 m)	21' (6.4 m)

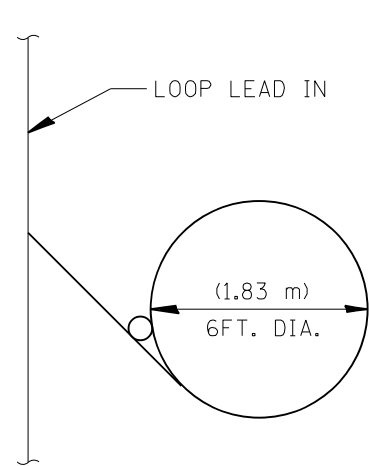
MODEL: Default
 FILE NAME: p:\pub\mranon.dwt\illinois\dot\Documents\DOT Office\Distric. 1\Project\ID 06421\CADDData\Design\06421-sh-lb-09.dgn

USER NAME = qarutnm	DESIGNED - R.L.	REVISED - 6/94
	DRAWN - G.M.	REVISED - 11/95
PLOT SCALE = 100,0000' / in.	CHECKED - R.L.	REVISED - 05/96
PLOT DATE = 1/10/2021	DATE - 6-22-94	REVISED - 10/96

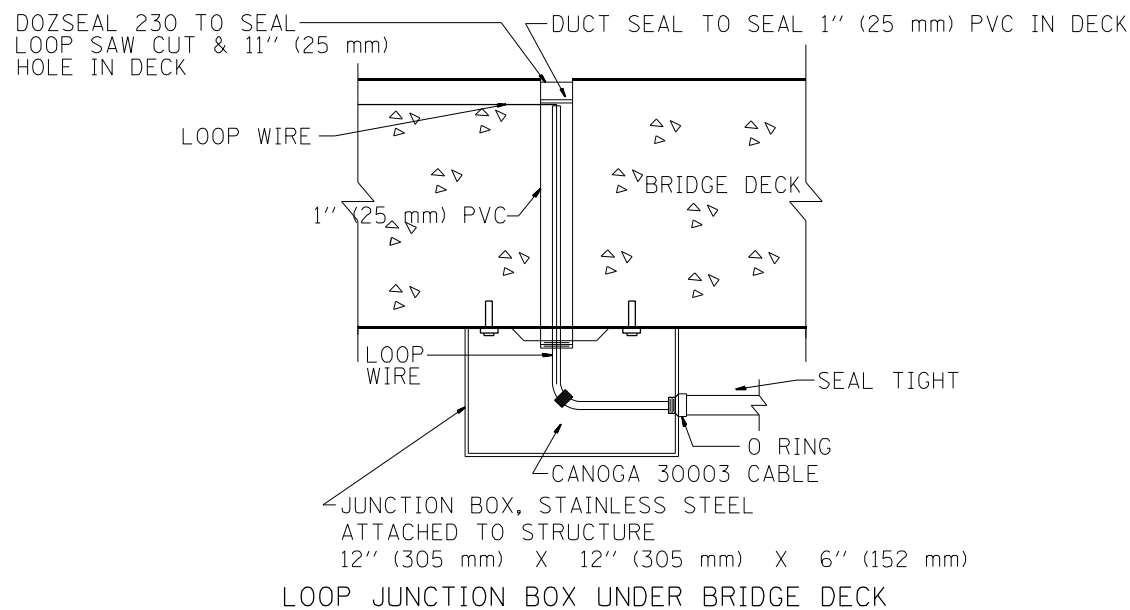
STATE OF ILLINOIS
DEPARTMENT OF TRANSPORTATION
 TRAFFIC SYSTEMS CENTER

RECTANGULAR INDUCTION LOOP TYPICAL	
SCALE: NONE	SHEET OF SHEETS STA. TO STA.

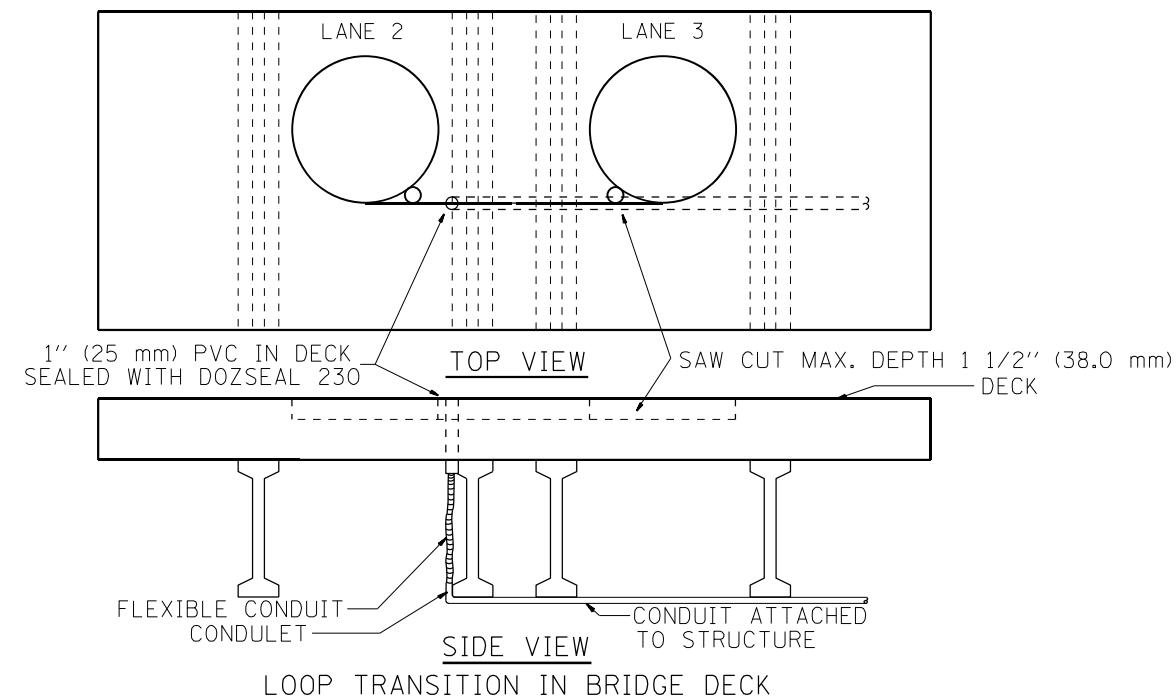
F.A.I. RTE.	SECTION	COUNTY	TOTAL SHEETS	SHEET NO.
80	2020-254-PP	WILL	18	7
CONTRACT NO. 62N21				
FED. ROAD DIST. NO.	ILLINOIS	FED. AID PROJECT		



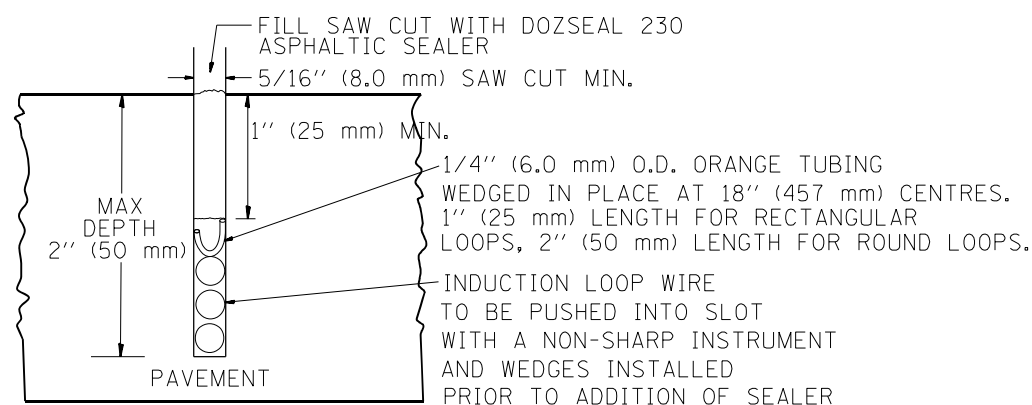
TYPICAL LOOP SAWCUT LAYOUT



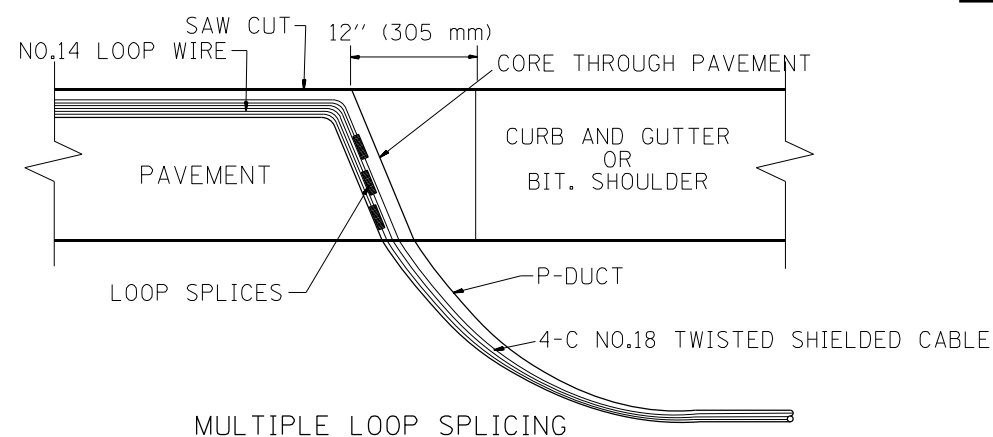
LOOP JUNCTION BOX UNDER BRIDGE DECK



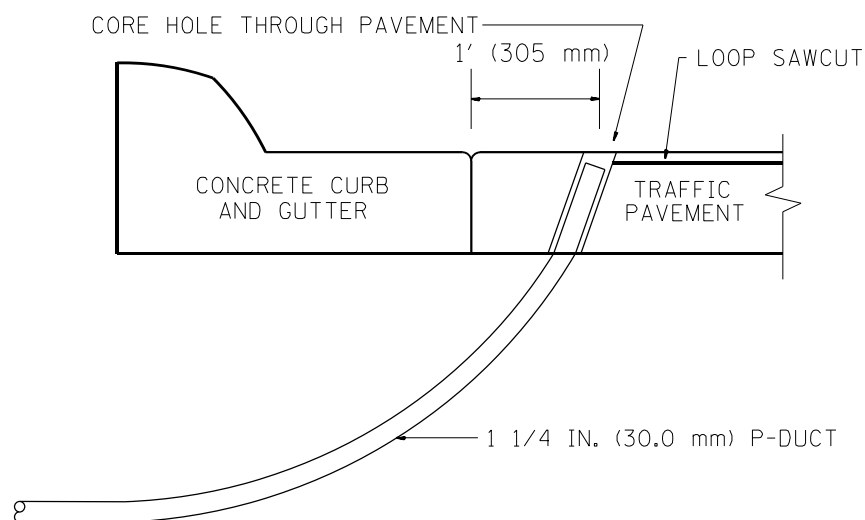
LOOP TRANSITION IN BRIDGE DECK



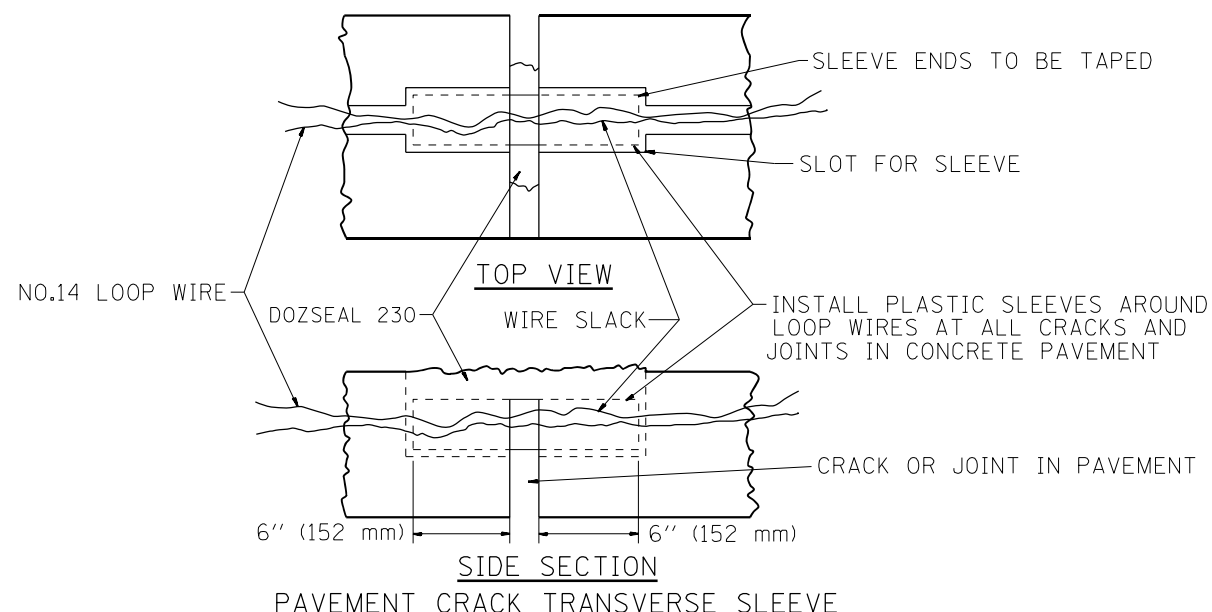
LOOP CROSS SECTION IN PAVEMENT



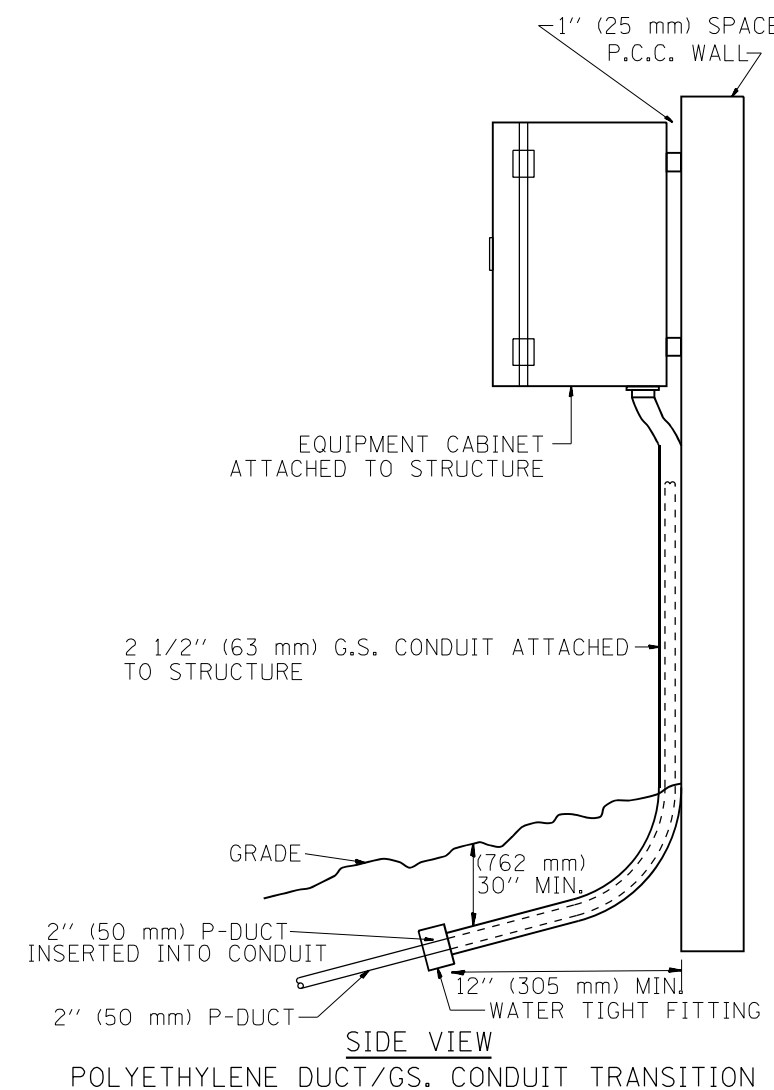
MULTIPLE LOOP SPLICING



SIDE SECTION LOOP LEAD-IN TRANSITION DETAIL



PAVEMENT CRACK TRANSVERSE SLEEVE



POLYETHYLENE DUCT/GS. CONDUIT TRANSITION

MODEL: Default
 FILE NAME: p:\pub\mason.dwg
 PROJECT: I:\projects\106421\CADD\Drawings\DOT\Office\Drawings\106421-106421-24-106421.dwg

USER NAME = qarutnm	DESIGNED - R.L.	REVISED - 06/94
	DRAWN - G.M.	REVISED - 03/95
PLOT SCALE = 100,0000' / in.	CHECKED - R.L.	REVISED - 11/95
PLOT DATE = 1/10/2021	DATE - 06/22/94	REVISED - 10/96

STATE OF ILLINOIS
 DEPARTMENT OF TRANSPORTATION
 TRAFFIC SYSTEMS CENTER

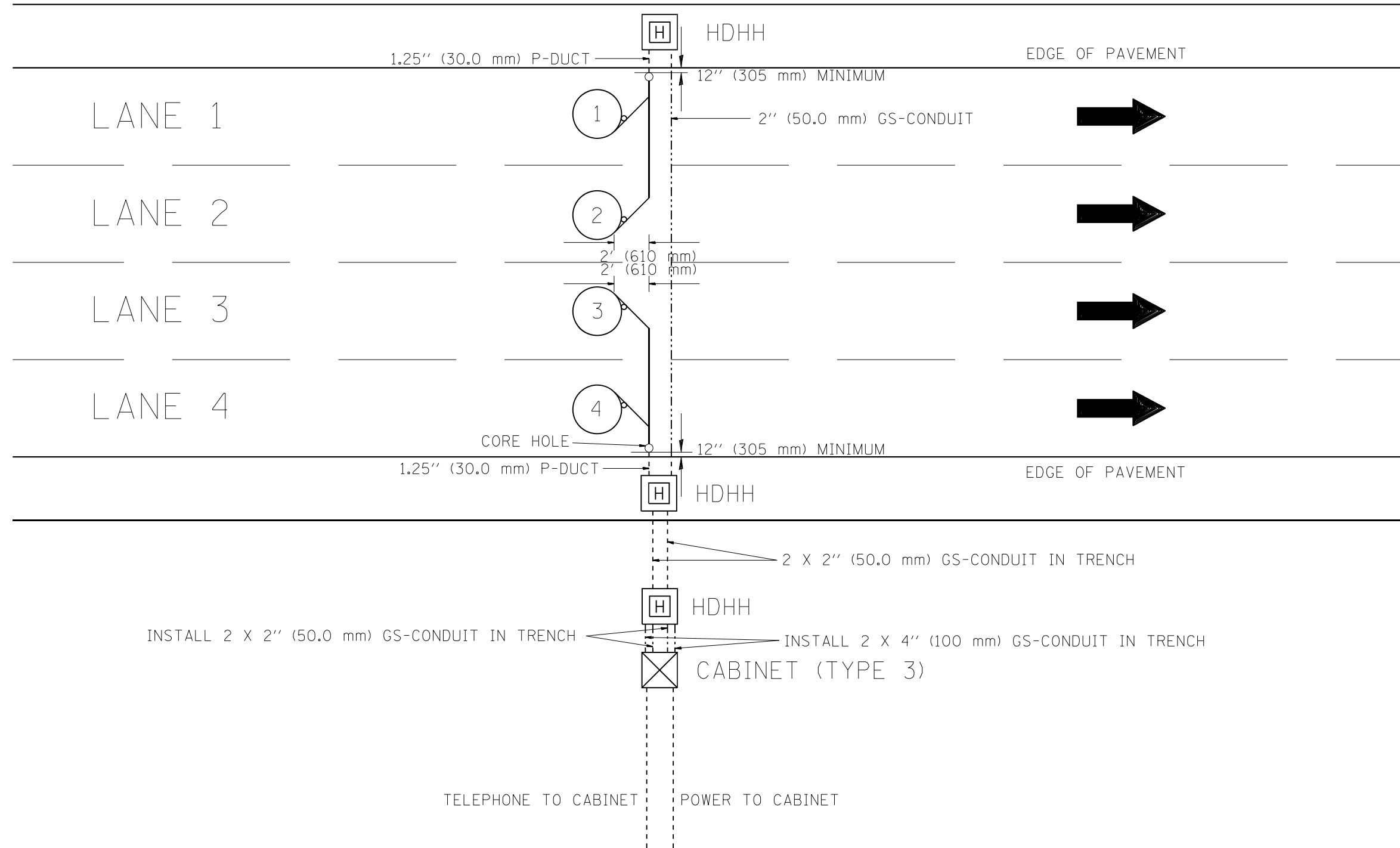
LOOP, CONDUIT & DUCT
 INSTALLATION DETAILS

SCALE: SHEET OF SHEETS STA. TO STA.

F.A.I. RTE. 80	SECTION 2020-254-PP	COUNTY WILL	TOTAL SHEETS 18	SHEET NO. 8
FED. ROAD DIST. NO. ILLINOIS FED. AID PROJECT			CONTRACT NO. 62N21	

TRAFFIC SYSTEMS CENTER (TY-1TSC-418#4)

NOTE: ALL MAIN LINE LOOPS ARE ROUND 6' DIA. (1.83 m)



NOTES

1. EACH LOOP SHALL BE SPLICED TO A 4-C NO.18 TWISTED SHIELDED LEAD IN WHEN 150' (45 m) OR MORE FROM CABINET.
2. LOOPS SHALL BE SPLICED IN HANDHOLES ONLY, OTHERWISE WRITTEN PERMISSION SHALL BE OBTAINED FROM TSC ENGINEER.
3. LOOPS SHALL NOT BE SPLICED IN SERIES.
4. EACH LOOP LEAD IN SHALL BE IDENTIFIED AND PERMANENTLY COLOR CODED IN THE COREHOLE, HANDHOLE & CABINETS THRU WHICH THEY ENTER OR PASS AND TAGGED WITH THE CORRECT NOMENCLATURES.

MODEL: Default
FILE NAME: \\paulmason.com\pub\illinois\pwr\WIDOT\Documents\DOT Office\District 1\Projects\ID 106421\CADD\Drawings\106421-2h-4lan.dwg

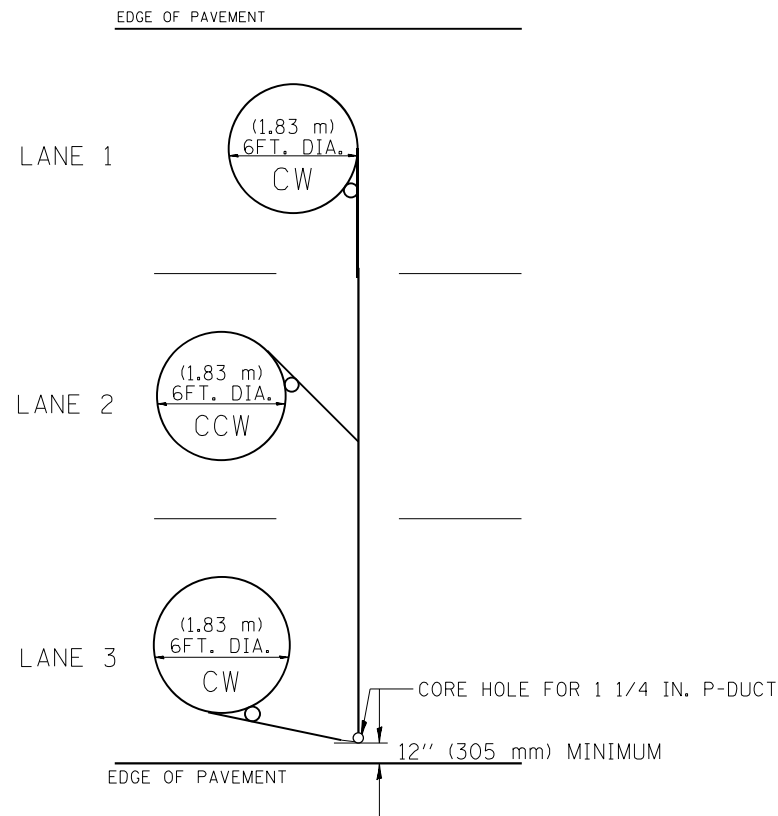
USER NAME = qarutnm	DESIGNED - R.L.	REVISED - R.L. 03/2011
	DRAWN - G.M.	REVISED -
PLOT SCALE = 100,0000' / in.	CHECKED - R.L.	REVISED -
PLOT DATE = 1/10/2021	DATE - 6-27-94	REVISED -

STATE OF ILLINOIS
DEPARTMENT OF TRANSPORTATION
TRAFFIC SYSTEMS CENTER

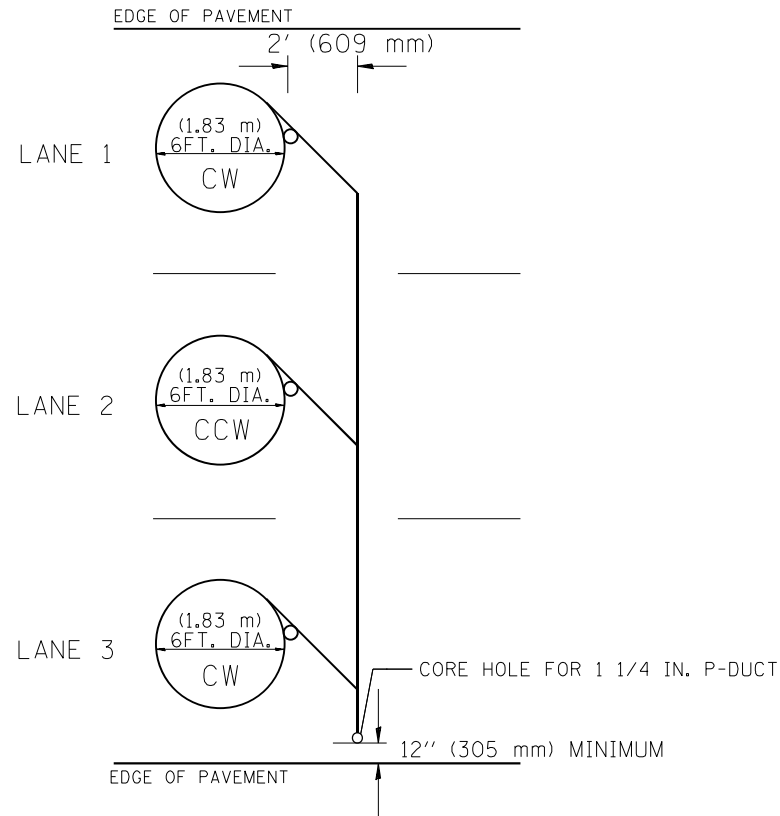
NEW CONSTRUCTION ROUND INDUCTION LOOP TYPICAL INSTALLATION	
SCALE: NONE	SHEET OF SHEETS STA. TO STA.

F.A.I. RTE.	SECTION	COUNTY	TOTAL SHEETS	SHEET NO.
80	2020-254-PP	WILL	18	9
CONTRACT NO. 62N21				
FED. ROAD DIST. NO.	ILLINOIS	FED. AID PROJECT		

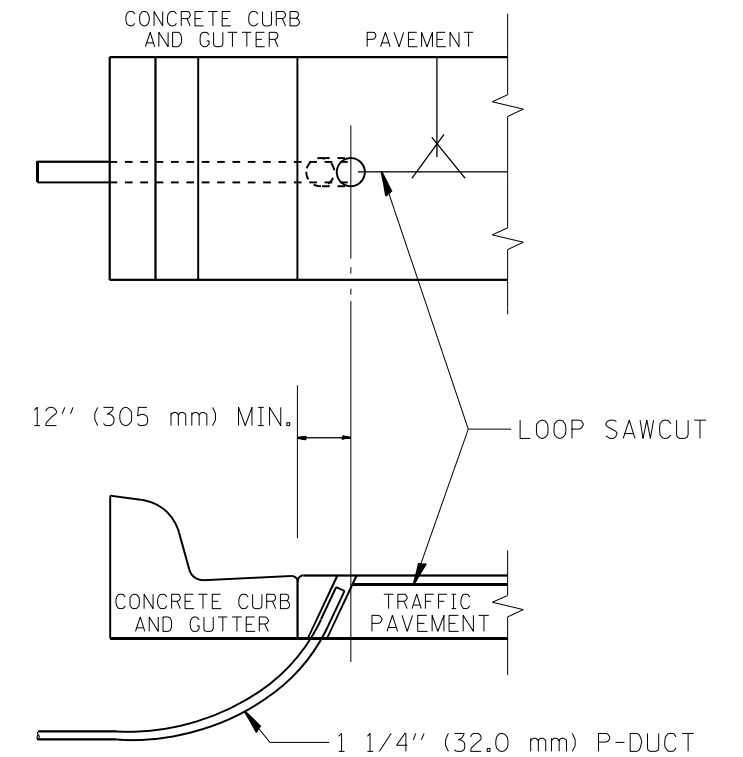
TRAFFIC SYSTEMS CENTER (TY-1TSC-418#6)



TYPICAL 6FT. (1.83 m) DIA. INDUCTION LOOP CORE DRILL
LAYOUT FOR MULTIPLE LANE ROADWAY



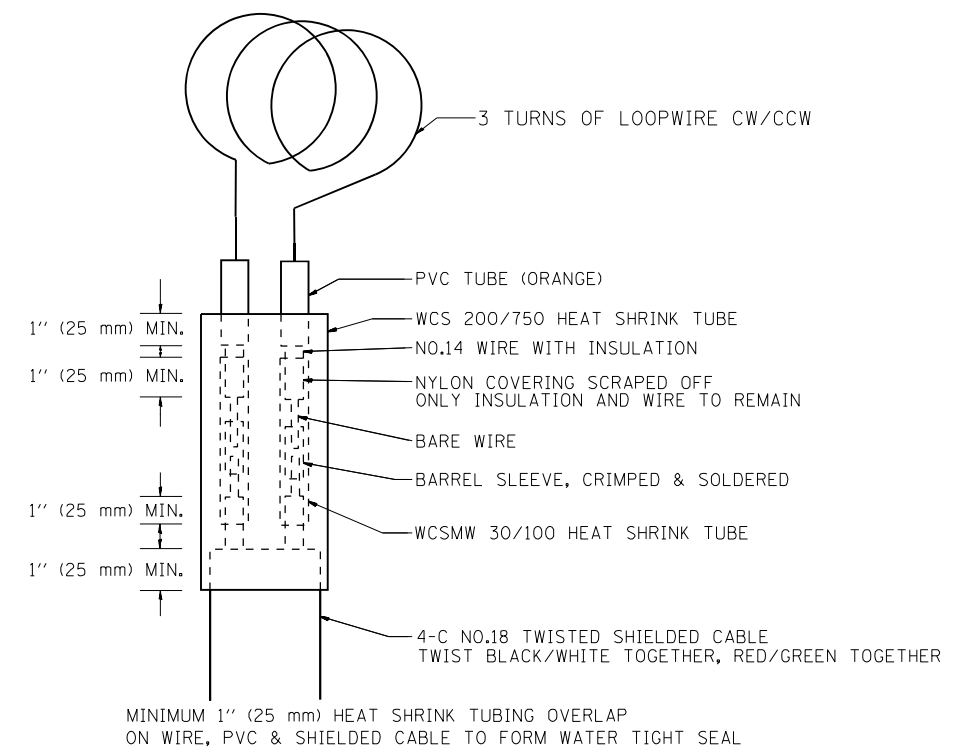
TYPICAL 6FT. (1.83 m) DIA. INDUCTION LOOP CORE DRILL
LAYOUT FOR MULTIPLE LANE ROADWAY



CURB AND GUTTER LOOP LEAD-IN
TRANSITION DETAIL

NOTES

1. EACH LOOP SHALL BE SPLICED TO A 4-C NO.18 TWISTED SHIELDED LEAD IN WHEN 150FT. (45 m) OR MORE FROM CABINET.
2. LOOPS SHALL BE SPLICED IN HANDHOLES ONLY, OTHERWISE WRITTEN PERMISSION SHALL BE OBTAINED FROM TSC ENGINEER.
3. LOOPS SHALL NOT BE SPLICED IN SERIES.
4. EACH LOOP LEAD IN SHALL BE IDENTIFIED AND PERMANENTLY COLOR CODED IN THE COREHOLE, HANDHOLE & CABINETS THRU WHICH THEY ENTER OR PASS AND TAGGED WITH THE CORRECT NOMENCLATURES.



LOOP SPLICING REQUIREMENTS

MODEL: Default
FILE NAME: p:\pub\mranon.dwt\illinois.dot\illinois\dot\Office\Drawings\1\Projects\106421\CADD\Drawings\106421-ty-1-lb-01.dwg

USER NAME = qarutnm	DESIGNED -	REVISED -
	DRAWN -	REVISED -
PLOT SCALE = 100,0000 ' / in.	CHECKED -	REVISED -
PLOT DATE = 1/10/2021	DATE -	REVISED -

STATE OF ILLINOIS
DEPARTMENT OF TRANSPORTATION
TRAFFIC SYSTEMS CENTER

EXISTING ROUND INDUCTION LOOP TYPICALS	
SCALE:	SHEET OF SHEETS STA. TO STA.

F.A.I. RTE.	SECTION	COUNTY	TOTAL SHEETS	SHEET NO.
80	2020-254-PP	WILL	18	10
CONTRACT NO. 62N21				
FED. ROAD DIST. NO.	ILLINOIS	FED. AID PROJECT		

TRAFFIC SYSTEMS CENTER (TY-1TSC-418#2)

MEDIAN

LANE 1

LANE 2

LANE 3

LANE 4

1

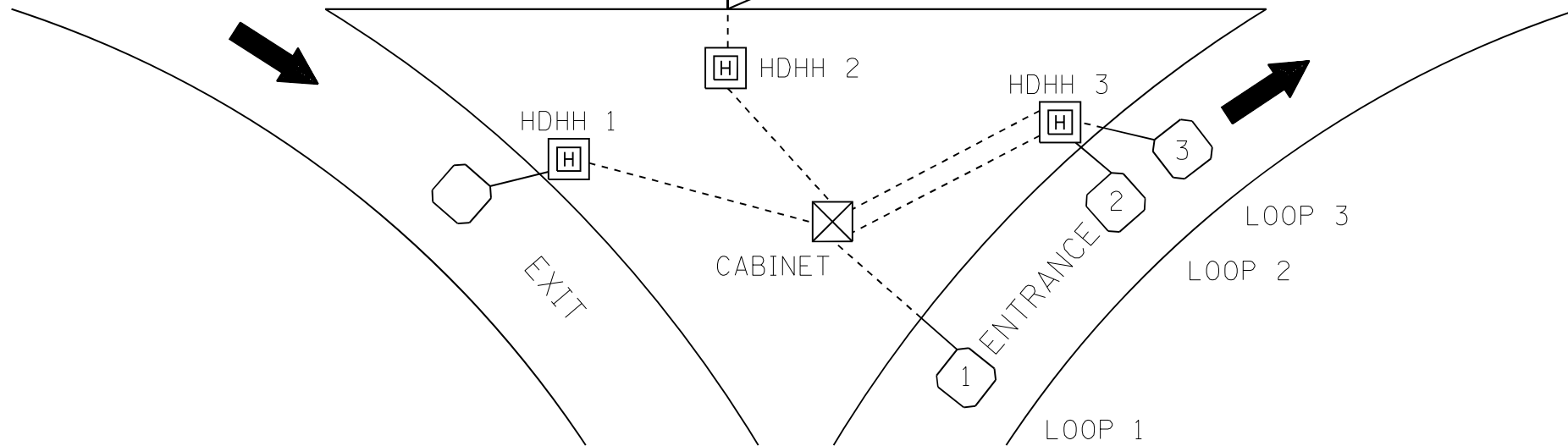
2

3

4



SUGGESTED TAG PANDUIT #MP250W175-C OR EQUIVALENT



LOOP ANALYZER					
LOCATION _____			DATE _____		
LOOP LOCATION LANE DIRECTION	LOOP WIRE MARKED AND CODED	LOOP SIZE	FREQ. INDUCTANCE	INSULATION	LOOP RESISTANCE

HDHH 1 EXAMPLE

IB-EB EXIT
CCW IN/
TO CABINET # _____

HDHH 2 EXAMPLE

IB (OB) LANE # ____
CCW /OUT
TO CABINET # _____

HDHH 3 EXAMPLE

IB-EB ENT.
LOOP #2
CW IN/

NOTE:

EACH LOOP WIRE SHALL BE TAGGED AS "IN" OR "OUT" AND "CW" OR "CCW". SHIELDED CABLE WILL BE TAGGED IN EACH HANDHOLE AND CABINET TO MATCH THE CABLE LOG.

USER NAME = qarutnm	DESIGNED -	REVISED -
	DRAWN -	REVISED -
PLOT SCALE = 100,0000' / in.	CHECKED -	REVISED -
PLOT DATE = 1/10/2021	DATE -	REVISED -

STATE OF ILLINOIS DEPARTMENT OF TRANSPORTATION TRAFFIC SYSTEMS CENTER

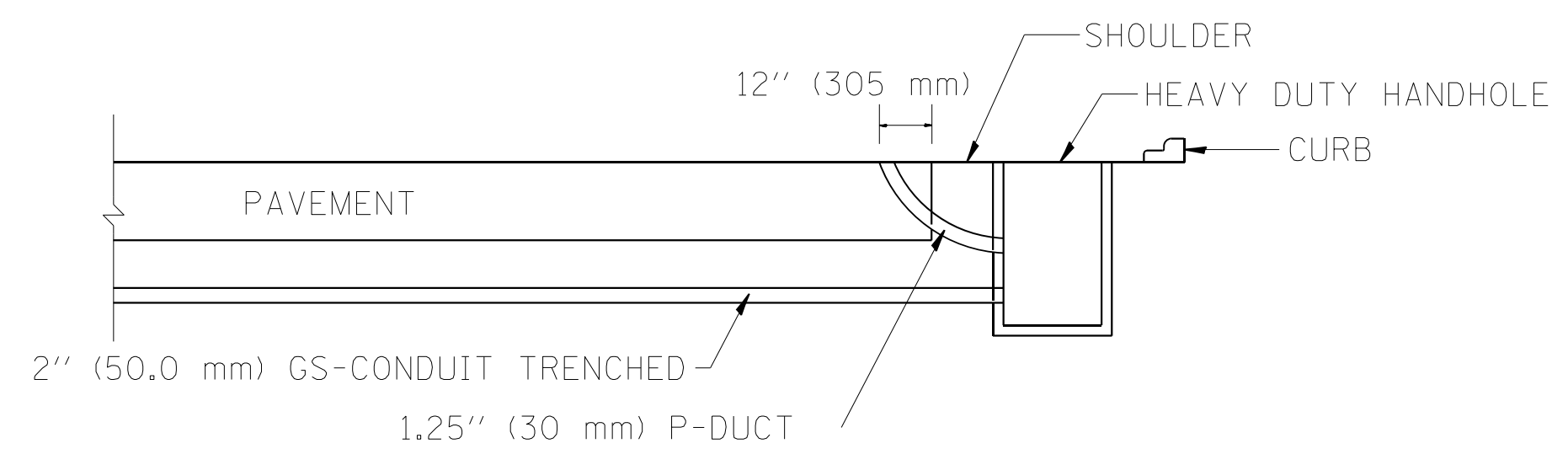
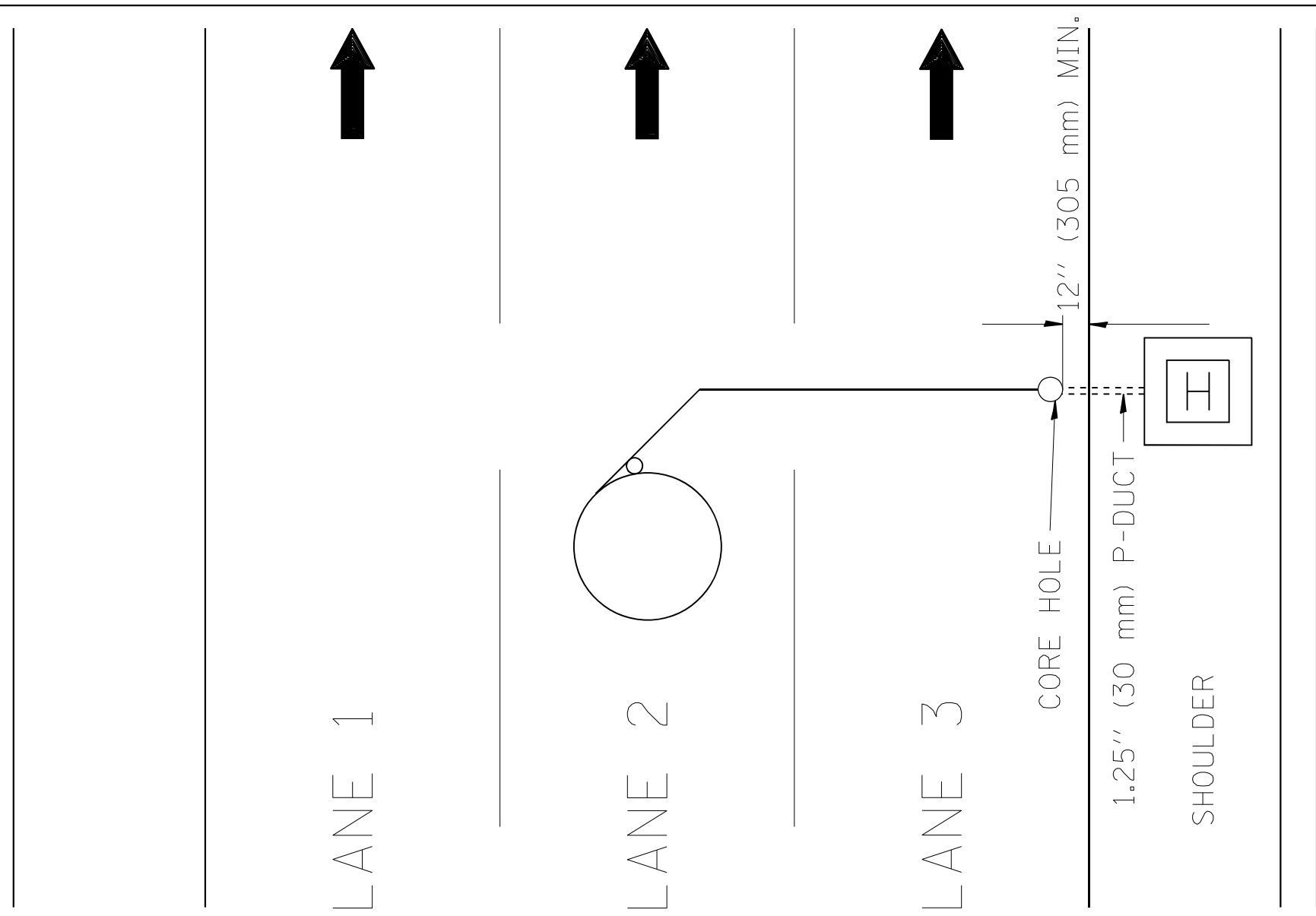
LOOP STATUS REPORT

SCALE: SHEET OF SHEETS STA. TO STA.

F.A.I. RTE.	SECTION	COUNTY	TOTAL SHEETS	SHEET NO.
80	2020-254-PP	WILL	18	11
FED. ROAD DIST. NO. ILLINOIS FED. AID PROJECT			CONTRACT NO. 62N21	

MODEL: Default FILE NAME: ...

MODEL: Default
 FILE NAME: p:\u0000\m0000\dot\illinois\dot\Documents\DOT_Offices\District 1\Projects\106421\CADD\Drawings\106421-2h-418-8.dgn



USER NAME = qarutnm	DESIGNED -	REVISED -
	DRAWN -	REVISED -
PLOT SCALE = 100,0000' / in.	CHECKED -	REVISED -
PLOT DATE = 1/10/2021	DATE -	REVISED -

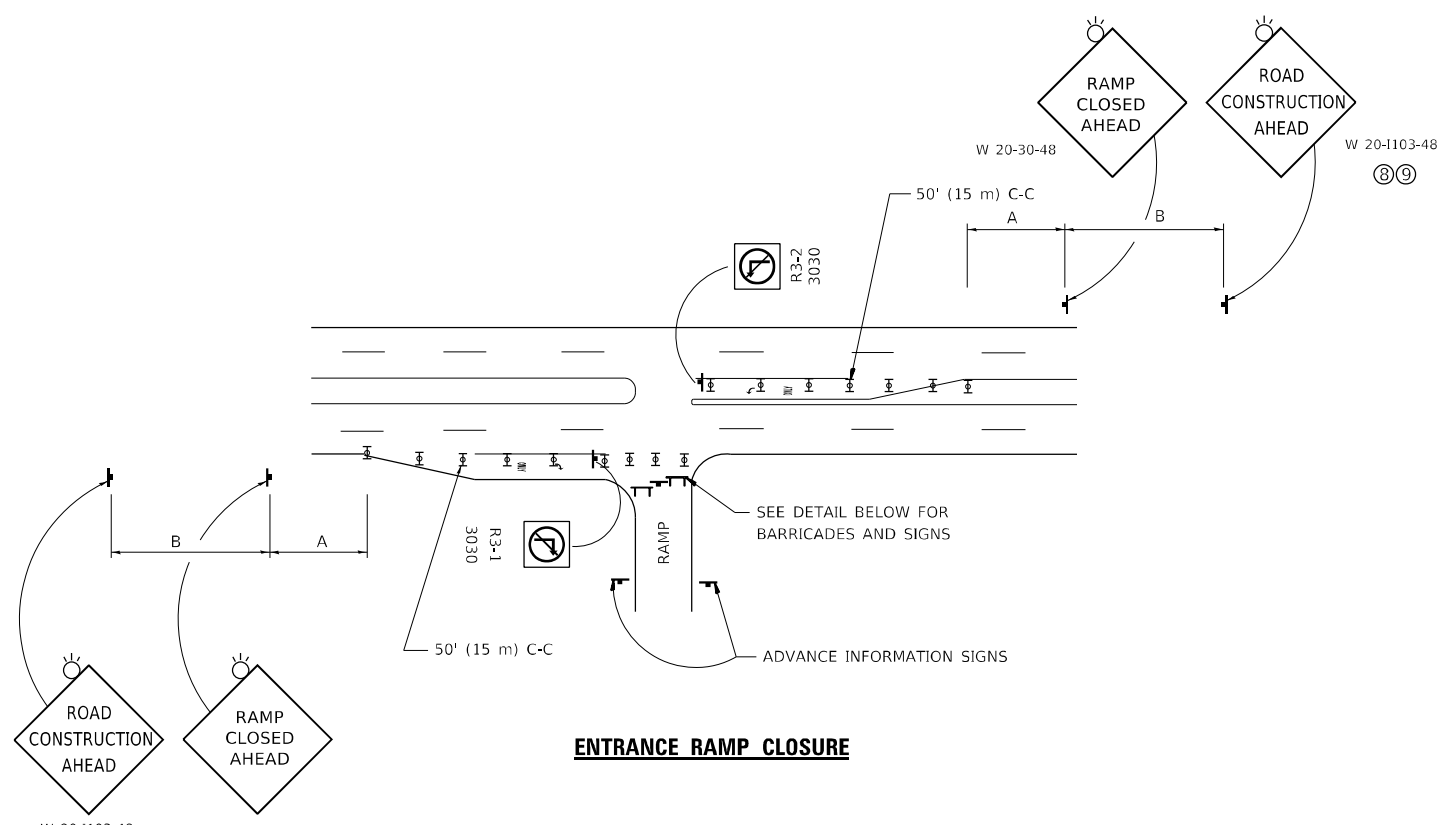
STATE OF ILLINOIS
DEPARTMENT OF TRANSPORTATION
 TRAFFIC SYSTEMS CENTER

DIVE HOLE DUCT SYSTEM

SCALE: SHEET OF SHEETS STA. TO STA.

F.A.I. RTE.	SECTION	COUNTY	TOTAL SHEETS	SHEET NO.
80	2020-254-PP	WILL	18	12
CONTRACT NO. 62N21				
FED. ROAD DIST. NO.	ILLINOIS	FED. AID PROJECT		

MODEL: Default
 FILE NAME: p:\work\amr\amr\dot\Documents\DOT - Office\Bldgrefc - 1\Project\ID 106421\CADD\Bldg\Design\Bldg\Bldg.dgn

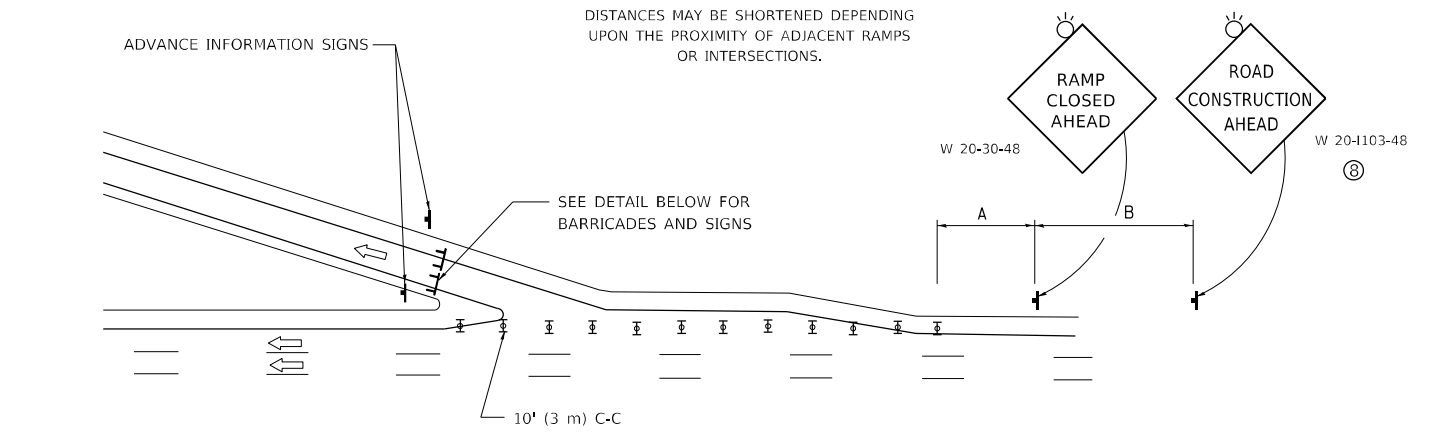


ENTRANCE RAMP CLOSURE

SIGN SPACING TABLE

FACILITY	DISTANCE BETWEEN SIGNS	
	A	B
EXPRESSWAY >24 HOURS	1000' (300 m)	1500' (450 m)
EXPRESSWAY ≤24 HOURS	500' (150 m)	500' (150 m)
ARTERIAL 55 MPH	500' (150 m)	500' (150 m)
ARTERIAL 50-45 MPH	350' (100 m)	350' (100 m)
ARTERIAL <45 MPH	200' (60 m)	200' (60 m)

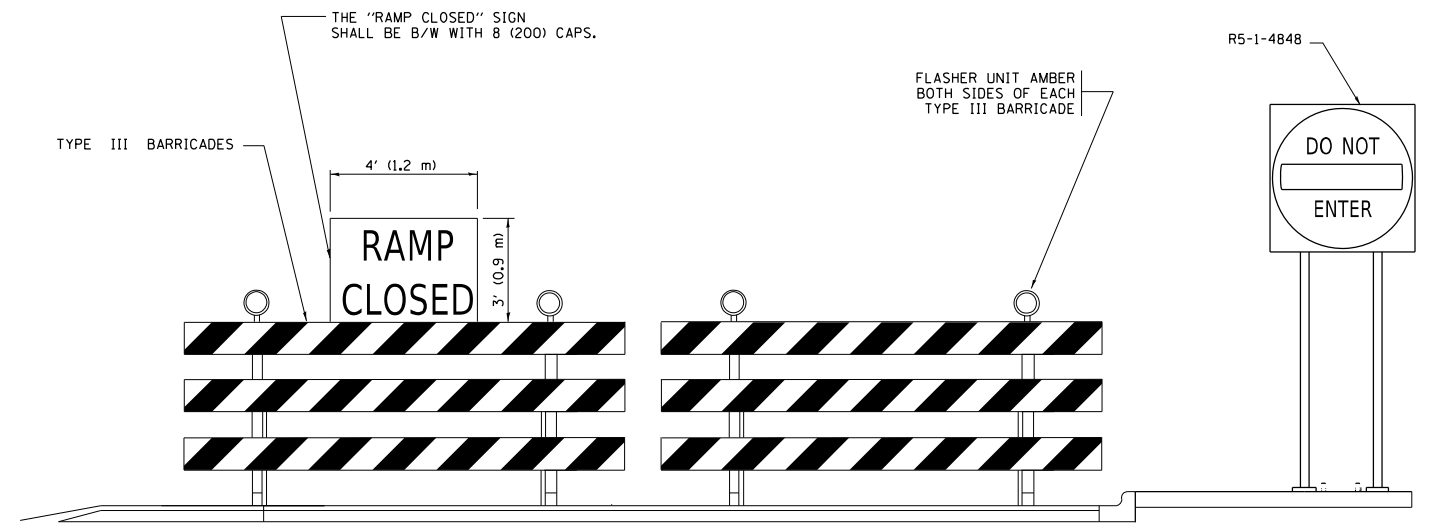
DISTANCES MAY BE SHORTENED DEPENDING UPON THE PROXIMITY OF ADJACENT RAMPS OR INTERSECTIONS.



EXIT RAMP CLOSURE

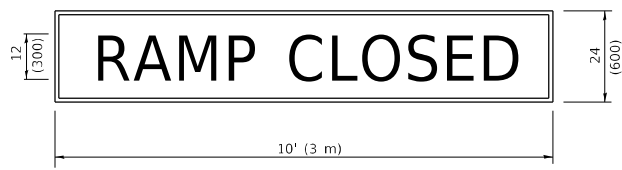
SYMBOLS

- ☐ TYPE II BARRICADE OR DRUM
- ☐ TYPE III BARRICADE WITH 2 FLASHING LIGHTS



DETAIL FOR REQUIRED BARRICADES & SIGNS

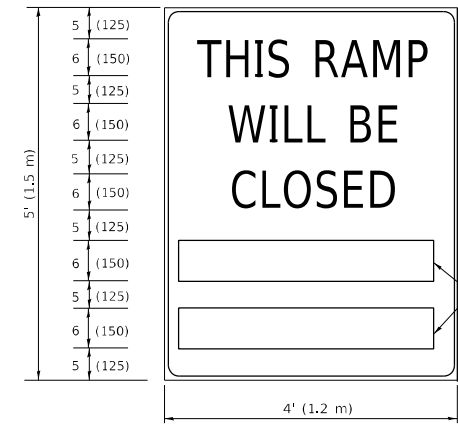
RAMP CLOSURE ADVANCE WARNING SIGN



BLACK LEGEND ON ORANGE BACKGROUND MOUNTED DIAGONALLY
 E MOD FONT
 1 (25) BORDER

THESE SIGNS ARE REQUIRED ON ALL THE EXIT GUIDE SIGNS FOR EXIT RAMPS THAT WILL BE CLOSED FOR MORE THAN FOUR (4) CONSECUTIVE DAYS.

RAMP CLOSURE ADVANCE INFORMATION SIGN



BLACK LEGEND ON WHITE BACKGROUND

1/2 (12) BORDER

E MOD FONT

THESE BLANK AREAS SHALL BE FILLED WITH THE DATES AND THE TIME THAT THE RAMP WILL BE CLOSED.

THESE SIGNS ARE REQUIRED ON BOTH SIDES OF THE RAMP, MINIMUM OF 1 WEEK IN ADVANCE OF THE CLOSURE.

THESE SIGNS SHALL BE FABRICATED AND PAID FOR ACCORDING TO THE TEMPORARY INFORMATION SIGNING SPECIAL PROVISION

GENERAL NOTES:

- ① CONES MAY BE SUBSTITUTED FOR DRUMS OR TYPE II BARRICADES DURING DAY OPERATIONS. CONES SHALL BE A MINIMUM OF 28 (700) HIGH.
- ② VERTICAL BARRICADES SHALL NOT BE USED FOR RAMP CLOSURES.
- ③ A FLAGGER SHALL BE POSITIONED AT EACH CLOSED RAMP THAT IS OPEN TO CONSTRUCTION VEHICLES, PRECEDED BY A W20-7 FLAGGER WARNING SIGN.
- ④ ALL ROUTE MARKERS AND TRAILBLAZER ASSEMBLIES WHICH DIRECT MOTORISTS TO A CLOSED ENTRANCE RAMP SHALL BE COVERED WHEN THE RAMP IS CLOSED FOR MORE THAN FOUR (4) DAYS.
- ⑤ THE SIGNING AND BARRICADING WHICH IS REQUIRED BY THIS DETAIL SHALL BE INCLUDED IN THE COST OF TRAFFIC CONTROL AND PROTECTION (EXPRESSWAYS).
- ⑥ AUTHORIZATION FROM THE DISTRICT'S BUREAU OF TRAFFIC IS REQUIRED FOR ALL RAMP CLOSURES.
- ⑦ THE RAMP CLOSURE ADVANCE INFORMATION SIGNS SHALL BE ERECTED IF THE CLOSURE TIME EXCEEDS TWENTY-FOUR (24) HOURS. ADDITIONAL ADVANCE WARNING SIGNS ON EXIT GUIDE SIGNING WILL BE REQUIRED FOR EXIT RAMP CLOSURES THAT EXCEED FOUR (4) DAYS IN LENGTH.
- ⑧ ROAD CONSTRUCTION AHEAD SIGNS MAY BE OMITTED WHEN THIS DETAIL IS USED IN CONJUNCTION WITH OTHER TRAFFIC CONTROL THAT ALREADY INCLUDES A ROAD CONSTRUCTION AHEAD SIGN.
- ⑨ ARTERIAL ROAD CONSTRUCTION AHEAD SIGNS SHALL BE INSTALLED ON THE LEFT SIDE OF TRAFFIC IF THE MEDIAN IS MORE THAN 10 FT WIDE.

ALL DIMENSIONS ARE IN INCHES (MILLIMETERS) UNLESS OTHERWISE SHOWN.

USER NAME = qarutnm	DESIGNED - D.W.S.	REVISED - S.P.B._01-07
PLOT SCALE = 100,0000' / in.	CHECKED -	REVISED - S.P.B._12-09
PLOT DATE = 1/10/2021	DATE - 02-83	REVISED - M.D._06-13
		REVISED - M.D._01-18

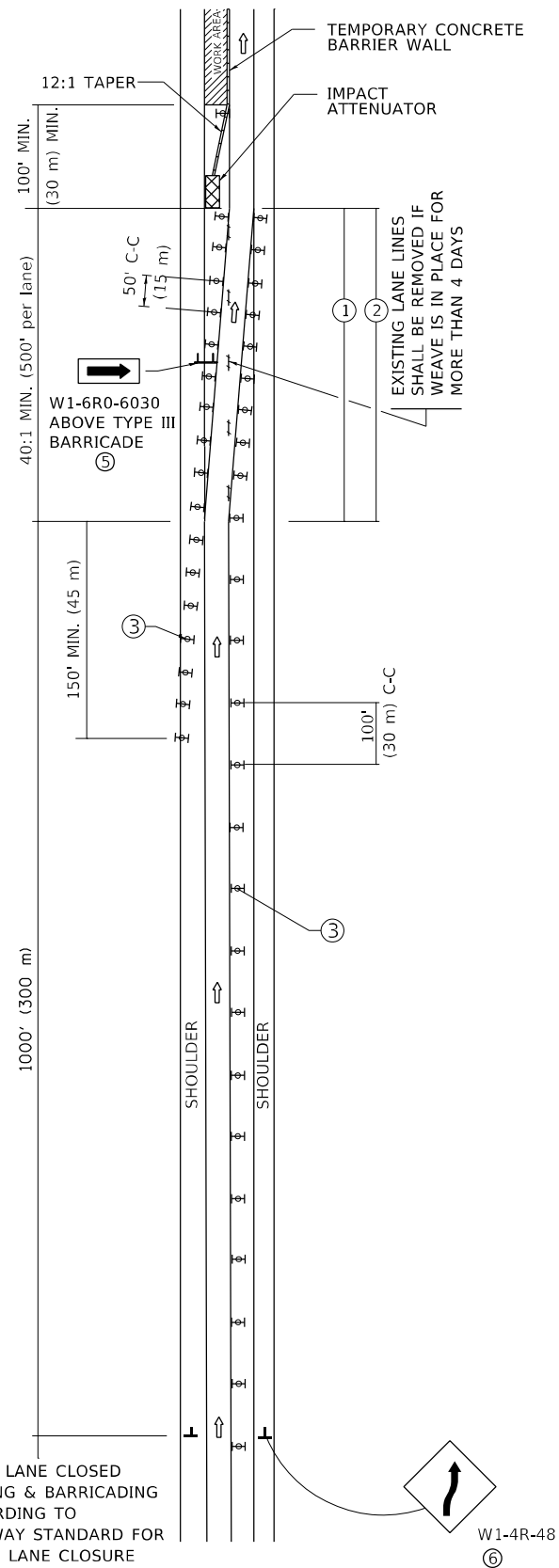
**STATE OF ILLINOIS
DEPARTMENT OF TRANSPORTATION**

**ENTRANCE AND EXIT RAMP
CLOSURE DETAILS**

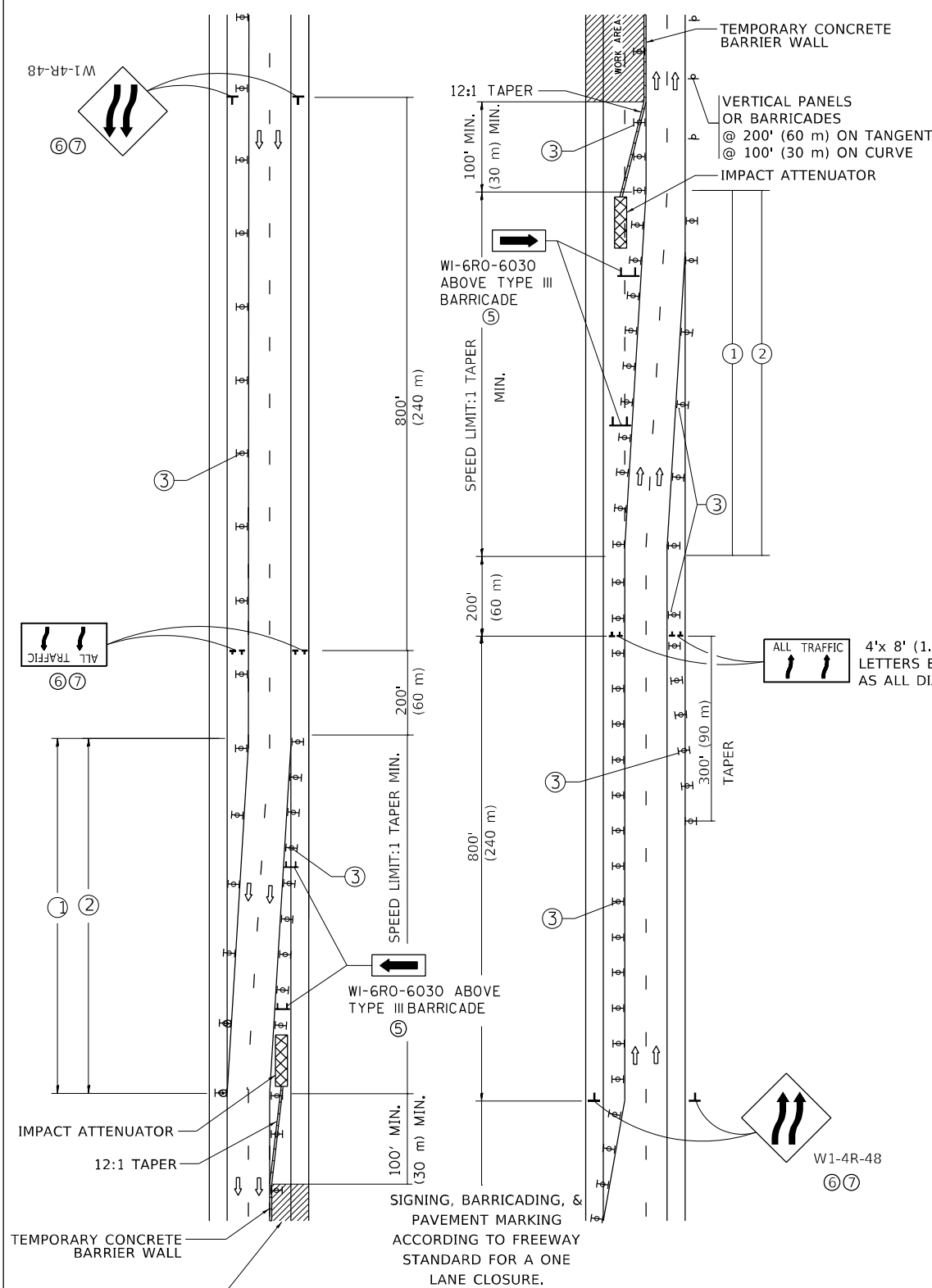
SCALE: NONE SHEET 1 OF 1 SHEETS STA. TO STA.

F.A.I. RTE.	SECTION	COUNTY	TOTAL SHEETS	SHEET NO.
I-80	2020-254-PP	WILL	18	13
TC-08		CONTRACT NO. 62N21		
		ILLINOIS FED. AID PROJECT		

SINGLE LANE WEAVE



MULTI-LANE WEAVE



GENERAL NOTES:

- ① EXISTING CONFLICTING PAVEMENT MARKING LINES SHALL BE REMOVED. PAVEMENT MARKING REMOVAL SHALL NOT BE REQUIRED FOR SINGLE LANE WEAVES UNDER 4 DAYS IN DURATION.
- ② CONTINUOUS REFLECTIVE TEMPORARY PAVEMENT MARKING TAPE SHALL BE PLACED THROUGHOUT THE TAPER AND FOR 300' (90 m) ALONG SIDE THE WORK AREA WHERE THE CLOSURE TIME IS GREATER THAN FOURTEEN DAYS. THE LEFT EDGE LINE SHALL BE YELLOW AND THE RIGHT EDGE LINE SHALL BE WHITE. FOR MULTI-LANE WEAVES LANE LINES SHALL BE 5 INCH, 10'-30' (3 m-9 m) SKIP DASH, WHITE.
- ③ PLASTIC DRUMS WITH STEADY BURN LIGHTS AT 50' (15 m) C-C SPACING IN TAPERS AND 100' (30 m) C-C SPACING IN TANGENTS.
- ④ ALL SIGNS SHALL BE POST MOUNTED IF THE CLOSURE TIME EXCEEDS FOUR DAYS.
- ⑤ TYPE III BARRICADES MAY BE OMITTED FOR SINGLE-LANE WEAVES UNDER 24-HOURS IN DURATION. W1-6 SIGNS WILL STILL BE REQUIRED. IF THE WIDTH OF OFFSET IS LESS THAN 6' THEN THE TYPE III BARRICADE WITH ATTACHED ARROW SIGN PANEL CAN BE ELIMINATED IN THE TAPER AREAS.
- ⑥ WHEN THE LENGTH OF THE SHIFTED SEGMENT (DISTANCE BETWEEN WEAVE POINTS) IS LESS THAN 1500', DOUBLE REVERSE CURVE SIGNS (W24-1) SHOULD BE USED INSTEAD OF THE REVERSE CURVE (W1-4) SIGNS. ARROWS ON THE 4'X8' "ALL TRAFFIC" SIGNS SHALL BE THE SAME SHAPE.
- ⑦ THE NUMBER OF ARROWS ON THESE SIGNS SHALL MATCH THE NUMBER OF LANES OPEN TO TRAFFIC.

SYMBOLS

- DIRECTION OF TRAFFIC
- WORK AREA
- SIGN ON PORTABLE OR PERMANENT SUPPORT
- TYPE II BARRICADE OR DRUM WITH MONO-DIRECTIONAL STEADY BURNING LIGHT
- TEMPORARY CONCRETE BARRIER WALL
- IMPACT ATTENUATOR
- W1-4R-48
- W24-1-48

ALL DIMENSIONS ARE IN INCHES (MILLIMETERS) UNLESS OTHERWISE SHOWN

MODEL: Default
FILE NAME: p:\pub\m3000m.dwg
PROJECT: I:\projects\106421\CADD\Drawings\Design\05\54.dwg

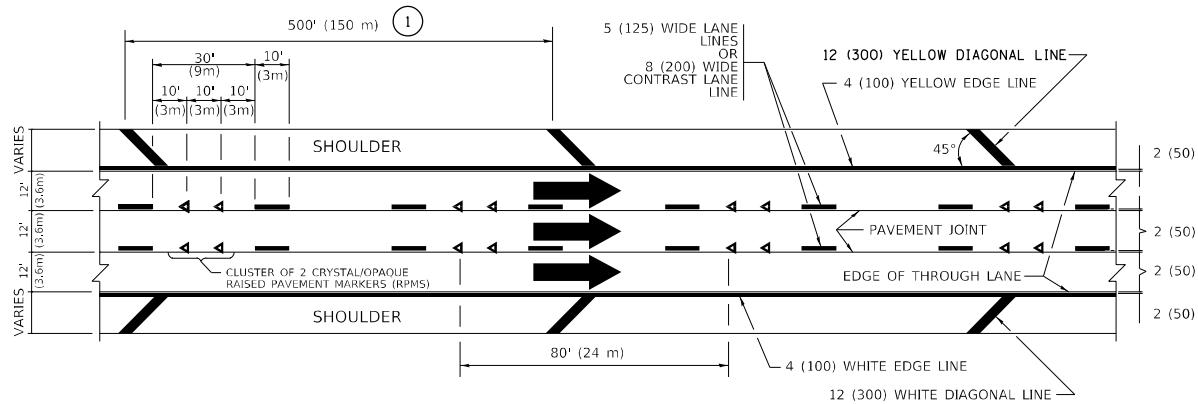
USER NAME = qarutnm	DESIGNED - D.W.S.	REVISED - J.A.F. 02-06
	DRAWN -	REVISED - S.P.B. 01-07
PLOT SCALE = 100,0000' / in.	CHECKED -	REVISED - S.P.B. 12-09
PLOT DATE = 1/10/2021	DATE - 02-87	REVISED - M.D. 06-13

**STATE OF ILLINOIS
DEPARTMENT OF TRANSPORTATION**

**TRAFFIC CONTROL DETAILS FOR
FREEWAY SINGLE & MULTI-LANE WEAVE**

SCALE: NONE SHEET 1 OF 1 SHEETS STA. TO STA.

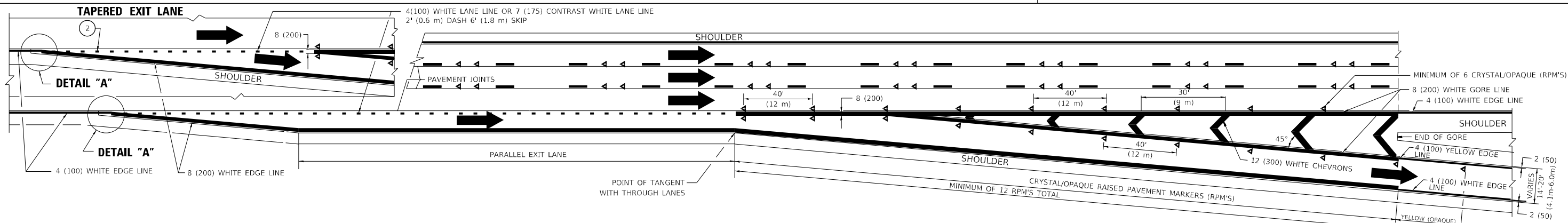
F.A.I. RTE.	SECTION	COUNTY	TOTAL SHEETS	SHEET NO.
I-80	2020-254-PP	WILL	18	14
TC-09		CONTRACT NO. 62N21		
ILLINOIS FED. AID PROJECT				



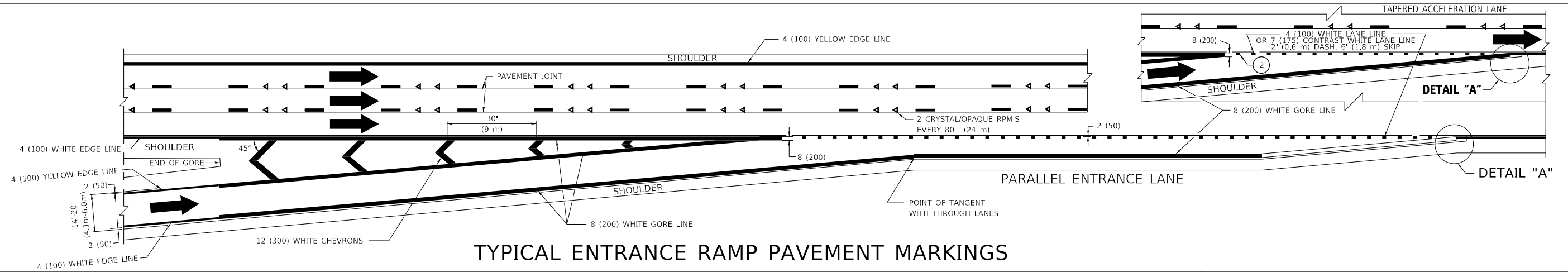
TYPICAL EDGE LINES & LANE LINES

PAVEMENT MARKING MATERIALS

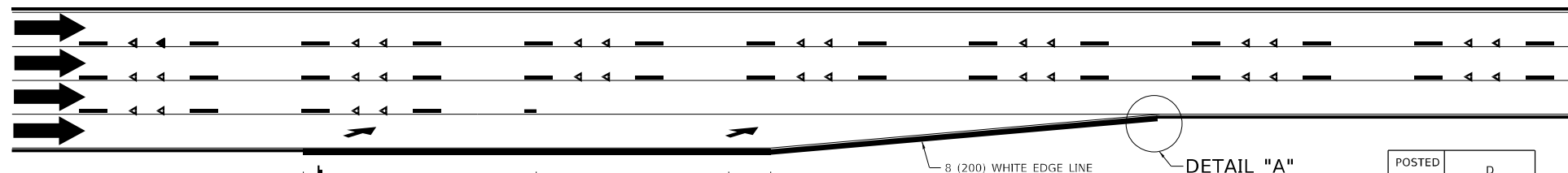
1. THERMOPLASTIC PAVEMENT MARKING LINE SHALL BE USED FOR ALL EDGE LINES, GORE LINES, AND DIAGONAL LINES ON HMA PAVEMENTS.
2. POLYUREA OR MODIFIED URETHANE PAVEMENT MARKING LINE SHALL BE USED FOR ALL EDGE LINES, GORE LINES, AND DIAGONAL LINES ON PCC PAVEMENTS.
3. PREFORMED PLASTIC PAVEMENT MARKING LINE TYPE B, INLAID OR GROOVE IN, SHALL BE USED FOR ALL LANE LINES ON HMA PAVEMENTS.
4. CONTRAST PREFORMED PLASTIC PAVEMENT MARKING LINE TYPE B, GROOVE IN, SHALL BE USED FOR ALL LANE LINES ON PCC PAVEMENT.



TYPICAL EXIT RAMP PAVEMENT MARKINGS

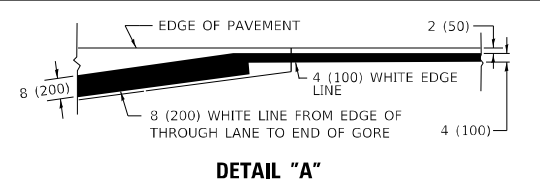


TYPICAL ENTRANCE RAMP PAVEMENT MARKINGS



LANE REDUCTION PAVEMENT MARKINGS

POSTED SPEED LIMIT	D DISTANCE
45 MPH	750' (230 m)
55 MPH	950' (290 m)
65 MPH	1200' (365 m)



- NOTES:**
- ① THE DIAGONAL LINES SHALL BE SPACED AT 40' (12 m) C-C ACROSS ALL STRUCTURES WHICH ARE 500' (150 m) OR LESS IN LENGTH. THE DIAGONAL LINES ARE NOT REQUIRED ON SHOULDERS WHICH ARE 6' (1.8 m) OR LESS IN WIDTH.
 - ② 4" (2' DASH, 6' SKIP) MARKING ON TAPERED ENTRANCE AND EXIT RAMP SHALL BE OMITTED ON TANGENT SECTIONS.

MODEL: Default
 FILE NAME: p:\m\l\amr\room.dwg
 PROJECT: I:\Projects\106421\106421\CD\Drawings\Design\Disc5\5.dwg
 PROJECT: I:\Projects\106421\106421\CD\Drawings\Design\Disc5\5.dwg

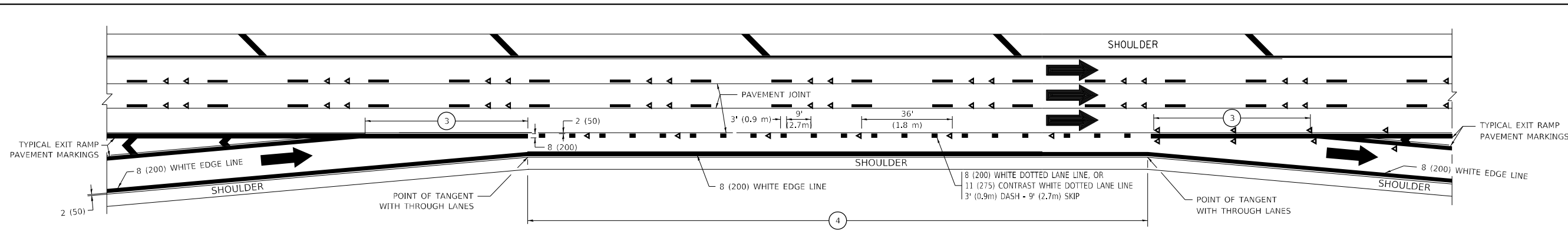
USER NAME = qarutnm	DESIGNED - D.W.S.	REVISED - S.P.B. 01-07
DRAWN -	REVISED - S.P.B. 01-10	
PLOT SCALE = 100,0000' / in.	CHECKED -	REVISED - M.D. 05-13
PLOT DATE = 1/10/2021	DATE - 01-90	REVISED - M.D. 09-17

**STATE OF ILLINOIS
DEPARTMENT OF TRANSPORTATION**

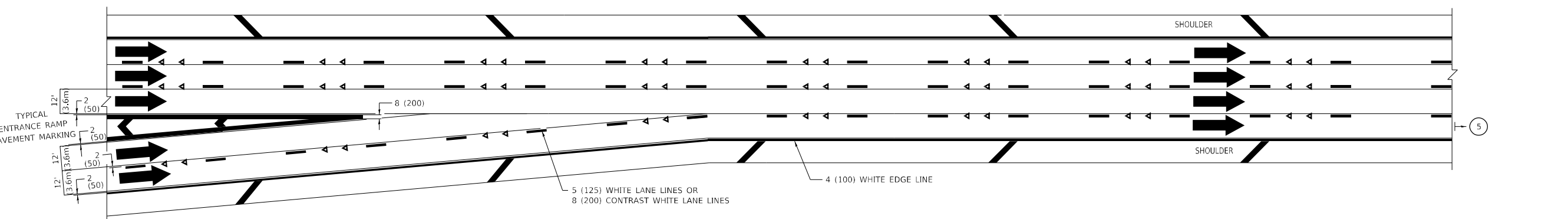
**MULTI-LANE FREEWAY
PAVEMENT MARKING DETAILS**

SCALE: NONE SHEET 1 OF 2 SHEETS STA. TO STA.

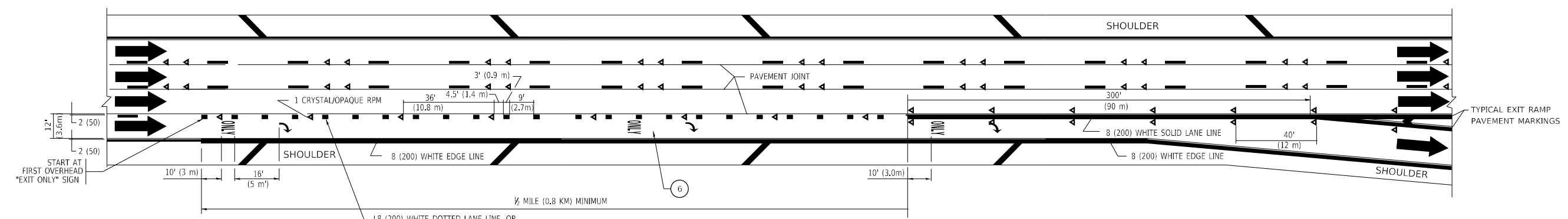
F.A.I. RTE.	SECTION	COUNTY	TOTAL SHEETS	SHEET NO.
I-80	2020-254-PP	WILL	18	15
TC-12		CONTRACT NO. 62N21		
ILLINOIS FED. AID PROJECT				



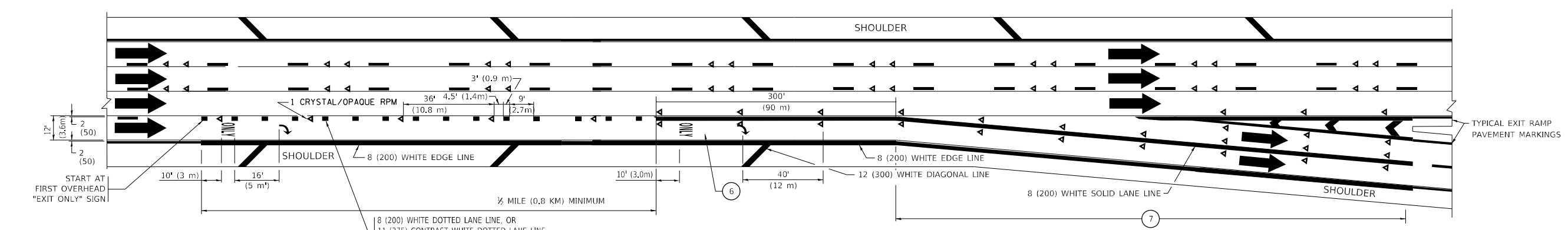
AUXILIARY LANE MARKINGS



TWO LANE ENTRANCE RAMP WITH MERGE MARKINGS



EXIT ONLY LANE MARKINGS



EXIT ONLY WITH OPTION LANE MARKINGS

- NOTES:**
- ③ OMIT WHEN LENGTH OF AUXILIARY LANE IS LESS THAN 500' (150 m).
 - ④ 8-INCH WIDE DOTTED LANE LINE MARKINGS SHALL BE USED WHEN THE LENGTH OF THE AUXILIARY LANE IS 2 MILES OR LESS.
 - ⑤ FOR TWO-LANE ENTRANCE RAMP, IF RIGHT LANE ENDS, USE TYPICAL ENTRANCE RAMP PAVEMENT MARKINGS.
 - ⑥ ONLY AND ARROWS EQUALLY SPACED, 500' (150 m) MAXIMUM SPACING. FULL SIZE LETTERS AND ARROW SHALL BE USED.
 - ⑦ CONTINUE 8" SOLID LANE LINE THROUGH EXIT TO END OF PAVED GORE.

MODEL: Default
 FILE: Multi-Lane_Pavement_Markings.dwg
 PROJECT: I-80/254-PP
 DATE: 1/10/2021

USER NAME = qarutnm	DESIGNED - D.W.S.	REVISED - J.A.F. 02-06
PLOT SCALE = 100,0000' / in.	CHECKED -	REVISED - S.P.B. 01-07
PLOT DATE = 1/10/2021	DATE - 01-90	REVISED - S.P.B. 01-10
		REVISED - M.D. 09-17

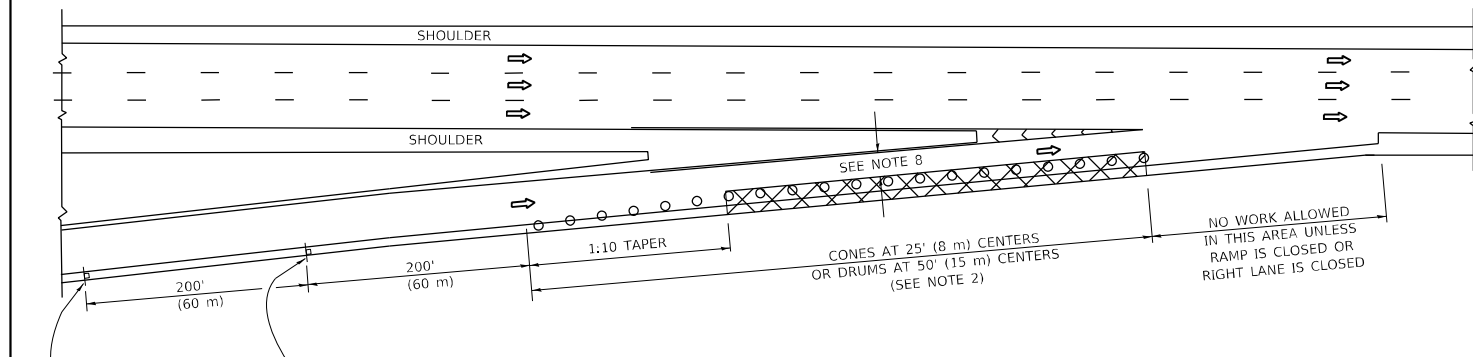
**STATE OF ILLINOIS
DEPARTMENT OF TRANSPORTATION**

**MULTI-LANE FREEWAY
PAVEMENT MARKING DETAILS**

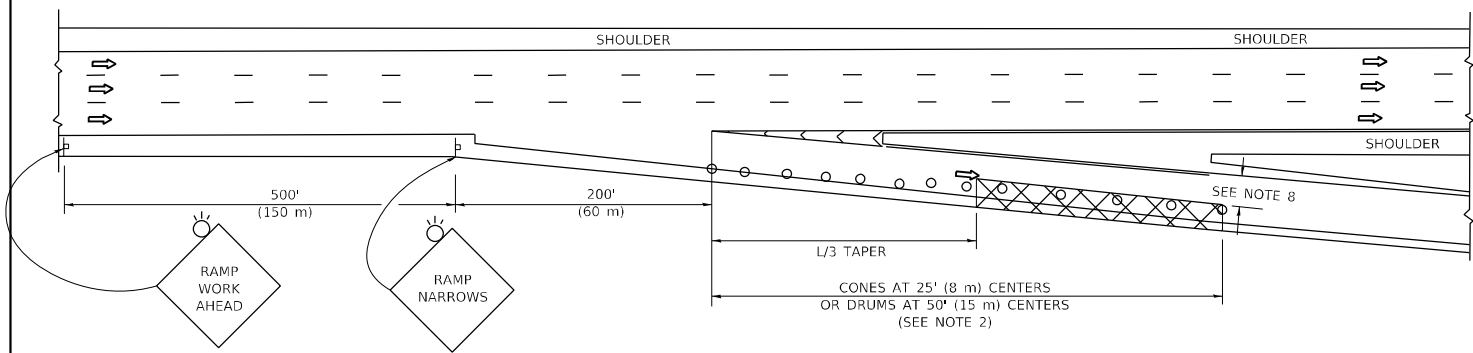
SCALE: NONE SHEET 1 OF 2 SHEETS STA. TO STA.

F.A.I. RTE.	SECTION	COUNTY	TOTAL SHEETS	SHEET NO.
I-80	2020-254-PP	WILL	18	16
TC-12		CONTRACT NO. 62N21		
ILLINOIS FED. AID PROJECT				

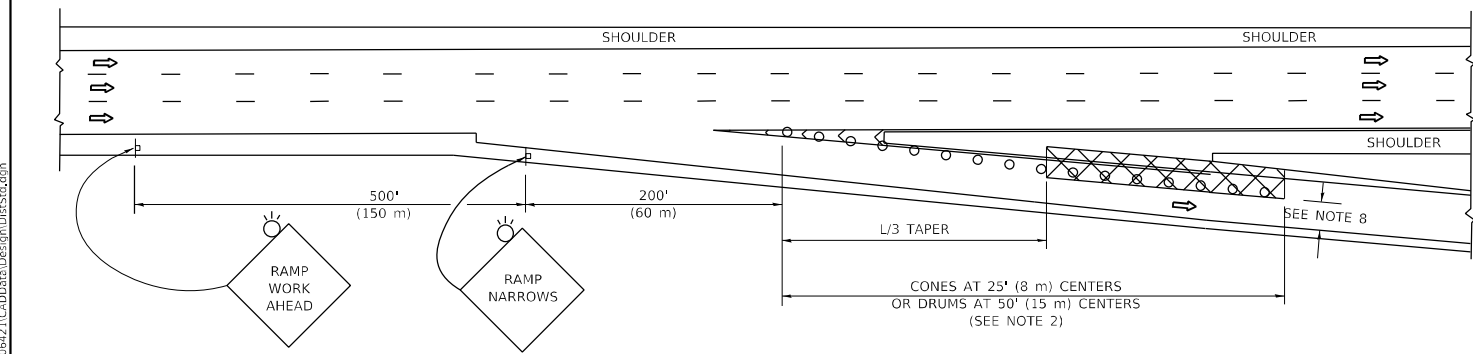
PARTIAL RAMP CLOSURE DETAILS



TYPICAL ENTRANCE RAMP



TYPICAL EXIT RAMP



TYPICAL EXIT RAMP

SYMBOLS

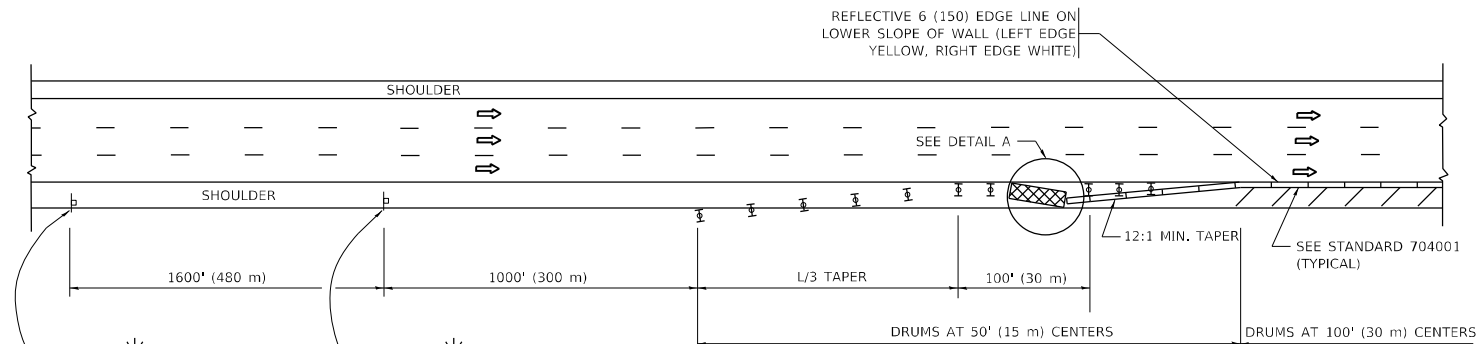
- ACTIVE WORK AREA
- SIGN ON PORTABLE OR PERMANENT SUPPORT
- FLAGGER WITH CONTROL SIGN
- TYPE II BARRICADE OR DRUM
- CONE, DRUM OR BARRICADE
- IMPACT ATTENUATOR OF TYPE AND TEST LEVEL SPECIFIED

GENERAL NOTES:

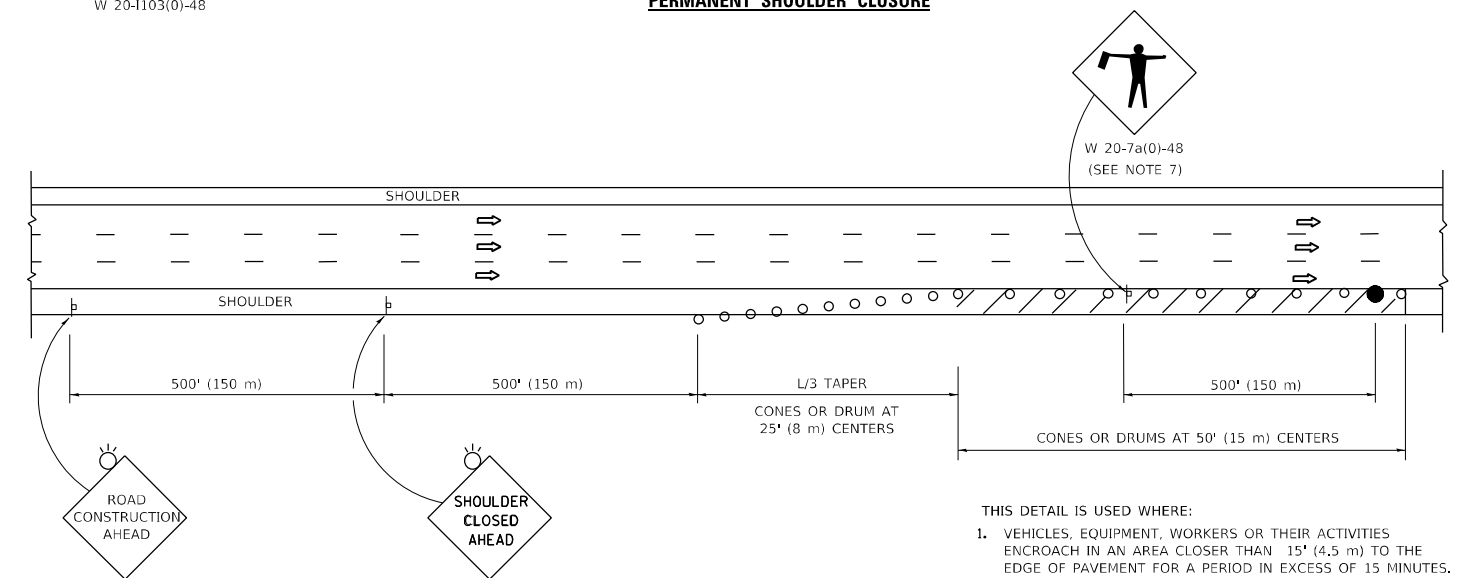
- THE "L" DISTANCE EQUALS:

SPEED LIMIT	FORMULAS
45 mph (80 km/h)	METRIC ENGLISH
OR GREATER:	L=0.65(W/S) L=(W/S)
W = WIDTH OF OFFSET IN FEET (METERS)	
S = NORMAL POSTED SPEED MPH (KM/H)	
- TYPE II BARRICADES OR DRUMS ARE REQUIRED FOR ALL NIGHTTIME CLOSURES. TYPE II BARRICADES OR DRUMS WITH MONODIRECTIONAL STEADY BURN LIGHTS ARE REQUIRED FOR DELINEATING OBSTACLES, EXCAVATIONS, OR HAZARDS EXCEEDING 100 FT (30m) IN LENGTH AT NIGHT.
- ALL SIGNS SHALL BE POST MOUNTED IF THE CLOSURE TIME EXCEEDS FOUR DAYS.
- FLASHING LIGHTS SHALL BE USED DURING THE HOURS OF DARKNESS AND SHALL BE INSTALLED ABOVE THE FIRST TWO SETS OF SIGNS.

SHOULDER CLOSURE DETAILS



PERMANENT SHOULDER CLOSURE



TEMPORARY SHOULDER CLOSURE

THIS DETAIL IS USED WHERE:
 1. VEHICLES, EQUIPMENT, WORKERS OR THEIR ACTIVITIES ENCR OACH IN AN AREA CLOSER THAN 15' (4.5 m) TO THE EDGE OF PAVEMENT FOR A PERIOD IN EXCESS OF 15 MINUTES.



**DETAIL "A"
IMPACT ATTENUATOR, TEMPORARY
(SEE NOTE 5)**

- THE IMPACT ATTENUATOR, TEMPORARY IS NOT REQUIRED WHEN THE TEMPORARY CONCRETE BARRIER WALL IS PROTECTED BY OR IS TIED INTO THE EXISTING GUARDRAIL. IF OFFSET IS LESS THAN 5 FEET USE NARROW USE TYPE DEVICE TO MEET NCHRP350/MASH.
- AUTHORIZATION FROM THE DISTRICT'S BUREAU OF TRAFFIC IS REQUIRED FOR ALL FREEWAY CLOSURES.
- THE FLAGGER AND FLAGGER SIGN ARE REQUIRED AT THE ABOVE WORK SITES WHEN:
 - FOUR OR MORE WORK VEHICLES ENTER THE TRAFFIC LANES IN A ONE HOUR PERIOD.
 - THE WORK ACTIVITY REQUIRES FREQUENT ENCR OACHMENT INTO THE LANE OPEN TO TRAFFIC.
 THE FLAGGER SHALL BE STATIONED APPROXIMATELY 100' (30 m) TO 200' (60 m) IN ADVANCE OF THE WORKERS.
- 12' MIN. WIDTH TANGENT SECTION
16' MIN. WIDTH CURVE SECTION.
- TEMPORARY SHOULDER AND NON-SYSTEM INTERCHANGE PARTIAL RAMP CLOSURES ARE ALLOWED WEEKDAYS BETWEEN 9:00 A.M. AND 3:00 P.M. AND BETWEEN 7:00 P.M. AND 5:00 A.M. OR AS APPROVED BY THE EXPRESSWAY TRAFFIC OPERATIONS ENGINEER. PERMANENT SHOULDER AND PARTIAL RAMP CLOSURES WILL ONLY BE PERMITTED IF CALLED FOR IN THE PLANS OR AS APPROVED BY THE EXPRESSWAY OPERATIONS ENGINEER.

ALL DIMENSIONS ARE IN INCHES (MILLIMETERS) UNLESS OTHERWISE SHOWN.

MODEL: Default
 FILE NAME: \\p11m000001\dot\illinois\dot\Documents\DOT_Office\Drawings\1\Projects\ID 106421\CADD\Drawings\Design\DRS\548.dgn
 PROJECT: ID 106421

USER NAME = qarutnm	DESIGNED -	REVISED - S.P.B, 12-09
	DRAWN - D.W.S.	REVISED - M.D, 06-13
PLOT SCALE = 100,0000' / in.	CHECKED -	REVISED - M.D, 01-18
PLOT DATE = 1/10/2021	DATE - 11-96	REVISED - M.D, 10-20

**STATE OF ILLINOIS
DEPARTMENT OF TRANSPORTATION**

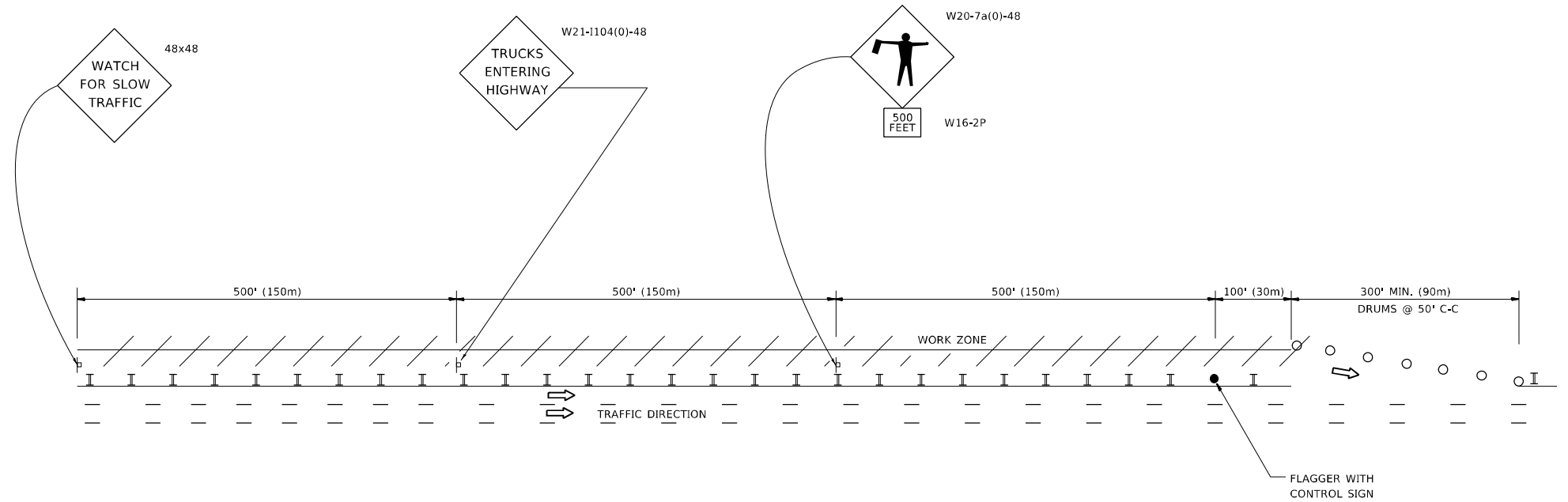
**TRAFFIC CONTROL DETAILS FOR FREEWAY
SHOULDER CLOSURES AND PARTIAL RAMP CLOSURES**

SCALE: NONE SHEET 1 OF 1 SHEETS STA. TO STA.

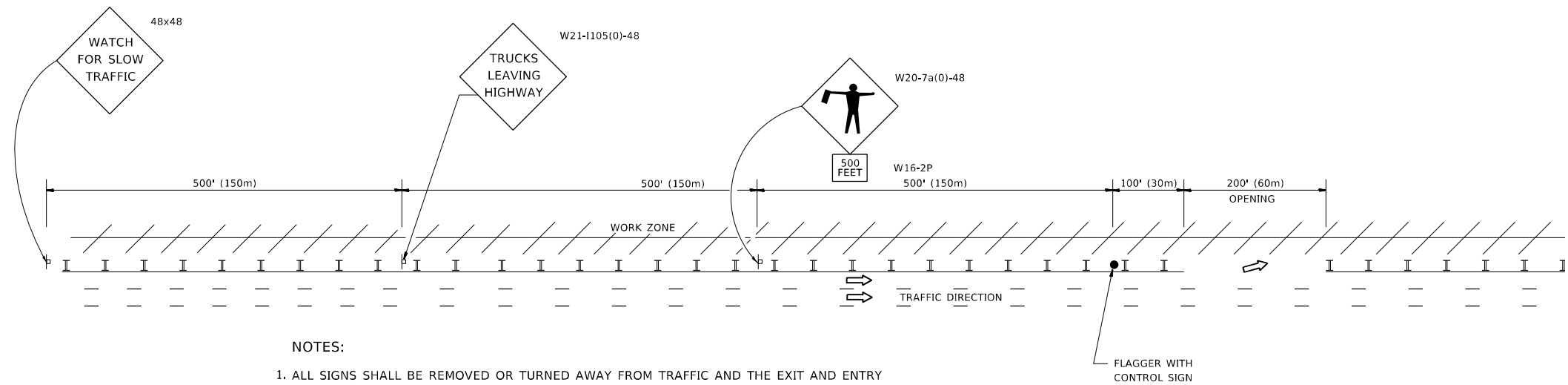
F.A.I. RTE.	SECTION	COUNTY	TOTAL SHEETS	SHEET NO.
I-80	2020-254-PP	WILL	18	17
TC-17		CONTRACT NO. 62N21		
ILLINOIS FED. AID PROJECT				

SIGNING FOR FLAGGING OPERATIONS AT WORK ZONE OPENINGS

WORK ZONE EXIT OPENING



WORK ZONE ENTRY OPENING



NOTES:

1. ALL SIGNS SHALL BE REMOVED OR TURNED AWAY FROM TRAFFIC AND THE EXIT AND ENTRY OPENINGS SHALL BE CLOSED WHEN THE FLAGGING OPERATION CEASES. NON OPERATING EQUIPMENT SHALL COMPLY WITH ARTICLE 701.11
2. WORK ZONE OPENINGS SHALL BE A MINIMUM OF ONE HALF MILE APART AND A MINIMUM OF ONE QUARTER MILE FROM ALL ENTRANCE AND EXIT RAMP.
3. EXITING THE WORK ZONE AT ANY PLACE OTHER THAN AT A WORK ZONE EXIT OPENING WILL BE PROHIBITED.
4. ALL VEHICLES SHALL ENTER THE WORK ZONE AT ENTRY OPENINGS, USING THEIR TURN SIGNALS TO WARN MOTORISTS
5. FLAGGERS SHALL NOT STOP TRAFFIC OR DIRECT TRAFFIC INTO AN ADJACENT LANE.

ALL DIMENSIONS ARE IN INCHES (MILLIMETERS) UNLESS OTHERWISE SHOWN

MODEL: Default
FILE NAME: p:\pub\mtrnrom.dwt\illinois.gov\PWIDOT\Documents\IDOT_Offices\IDOTrefc_1\Project\ID 106421\CADD\Design\Design\DIS54.dgn

USER NAME = qarutnm	DESIGNED -	REVISED - J.A.F. 02-06
	DRAWN -	REVISED - S.P.B. 01-07
PLOT SCALE = 100,0000' / in.	CHECKED -	REVISED - S.P.B. 12-09
PLOT DATE = 1/10/2021	DATE -	REVISED - M.D.06-13

**STATE OF ILLINOIS
DEPARTMENT OF TRANSPORTATION**

**FREEWAY /EXPRESSWAY SIGNING FOR FLAGGING OPERATIONS
AT WORK ZONE OPENINGS ON FREEWAYS /EXPRESSWAYS**

SCALE: NONE SHEET 1 OF 1 SHEETS STA. TO STA.

F.A.I. RTE.	SECTION	COUNTY	TOTAL SHEETS	SHEET NO.
I-80	2020-254-PP	WILL	18	18
TC-18			CONTRACT NO. 62N21	
ILLINOIS FED. AID PROJECT				