

**State of Illinois**  
**Department of Natural Resources**  
**Office of Mines and Minerals**  
**Abandoned Mined Lands Reclamation Division**

Funded by the  
United States Department of Interior  
Federal Office of Surface Mining

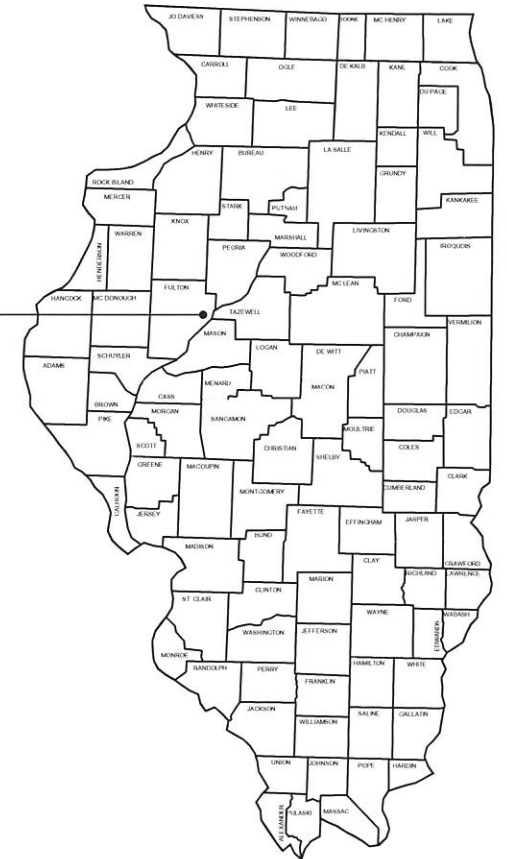
**Buckheart Mine Highwall  
Remedial Project  
AML-GFuE-2004  
Fulton County  
4LR**

SCHEDULE OF DRAWINGS:

1. Cover Sheet
2. Summary of Quantities/General Notes/Location Map
- 3-5. Existing and Proposed Conditions
6. Borrow Area and Details

Contract No. M2004

Buckheart Mine Highwall  
Fulton County



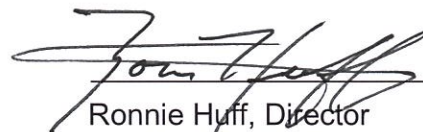
PRE-BID MEETING

A voluntary Pre-bid meeting is scheduled for this project at the project site near the intersection of Illinois Route 78 and County Highway 30 (Old Weaver Road) at 11 a.m. on Tuesday, February 16, 2021.


*Certified Copy*

Prepared By IDNR Staff

Approved for Bidding:

  
Ronnie Huff, Director  
Office of Mines and Minerals  
Illinois Dept. of Natural Resources

Approved By:

  
Rita M. Lee, Manager  
AMLR Division  
Office of Mines and Minerals

Approved By:

  
Thaddeus J. Faught  
IL Licensed Professional Engineer  
No. 062.069058



Summary of Quantities						
Item No.	#	Item	Section	Quantity	Unit	Rates/Remarks
NRM20110	1	Special Clearing	201	1	L SUM	
NRM20210	2	Earth Excavation	202	3,555	CU YD	
NRM25040	3	Nitrogen Fertilizer Nutrient	250	672	POUND	120 pounds/acre-application
NRM25050	4	Phosphorus Fertilizer Nutrient	250	790	POUND	141 pounds/acre-application
NRM25060	5	Potassium Fertilizer Nutrient	250	1,960	POUND	350 pounds/acre-application
NRM25070	6	Agricultural Ground Limestone	250	5.6	TON	2 tons/acre
NRM25090	7	Seeding	250	2.8	ACRE	
25100900	8	Turf Reinforcement Mat	IDOT 251	1,642	SQ YD	
NRM28031	9	Temporary Ditch Check (Rolled Excelsior)	280	20	FOOT	Rolled Excelsior, 12" DIA
28100725	10	Stone Dumped Riprap, Class B3	IDOT 281	159	TON	To Be Removed Upon Project Completion
28200200	11	Filter Fabric	IDOT 282	278	SQ YD	To Be Removed Upon Project Completion
NRM28610	12	Special Excelsior Blanket	286	10,664	SQ YD	No mulch over special excelsior blanket
40200800	13	Aggregate Surface Course, Type B	IDOT 402	97	TON	
NRM67110	14	Mobilization (Max. 6% of Bid)	671	1	L SUM	

Schedule of Seeding and Fertilizer Nutrients			
ITEM (Unit)	August 1st, 2021 – September 1st, 2021	March 1st, 2022 – April 20th, 2022	TOTAL QUANTITY
SEEDING (Acres)	2.8 Acres		2.8 Acres
AGRICULTURAL GROUND LIMESTONE (Tons)	5.6 Tons (2 Tons/Acre)		5.6 Tons
NITROGEN FERTILIZER NUTRIENT (Pounds)	336 Pounds (120 Pounds/Acre)	336 Pounds (120 Pounds/Acre)	672 Pounds
PHOSPHORUS FERTILIZER NUTRIENT (Pounds)	395 Pounds (141 Pounds/Acre)	395 Pounds (141 Pounds/Acre)	790 Pounds
POTASSIUM FERTILIZER NUTRIENT (Pounds)	980 Pounds (350 Pounds/Acre)	980 Pounds (350 Pounds/Acre)	1,960 Pounds

**GENERAL NOTES**

Unless otherwise noted on the plans, all disturbed areas within the construction limits will be amended with agricultural ground limestone, fertilizer nutrients, seeded, and mulched at the required rates specified in the plans.

The Contractor is responsible for visiting the site and getting familiar with the existing conditions and the proposed reclamation work prior to submitting a bid.

The Contractor shall provide and pay for all field engineering services to execute the project as specified in the Field Engineering section of the Special Provisions.

The Contractor is responsible for locating and protecting all existing utility lines pertaining to the work.

Unless noted on the plans, all onsite access roads may be used for construction and must be maintained during construction and restored to original or better condition at the completion of work by the Contractor. Access roads to the site as designated in the plans are to be maintained to the satisfaction of the Engineer.

The construction limits shall be staked by the Contractor prior to construction. The Contractor is responsible for the repair and/or restitution at his/her own expense for all damages done to any area outside the construction limits.

Application rates specified in the plans are shown in the Summary of Quantities – Rates/Remarks column.

**CONSTRUCTION NOTES**

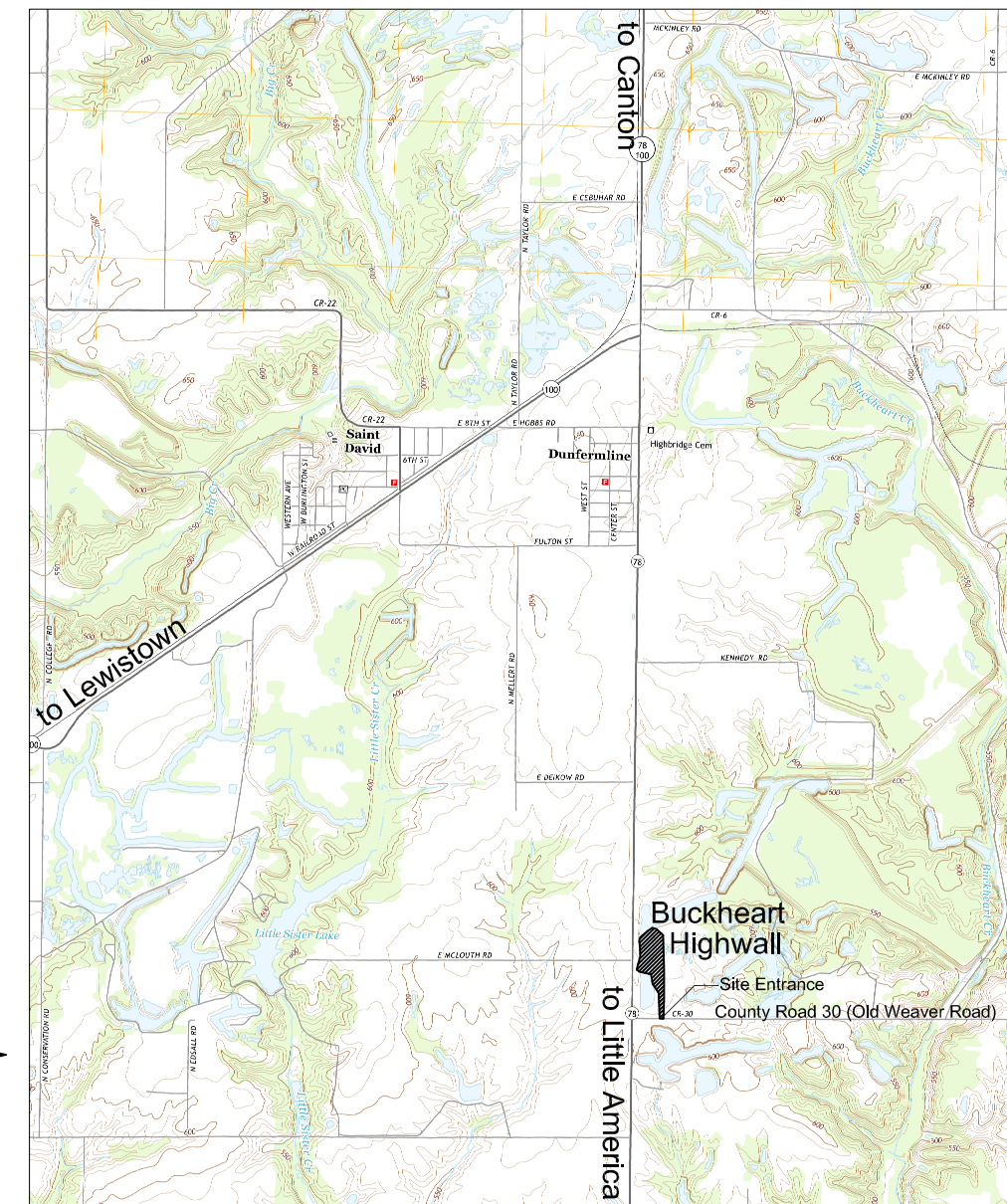
**BURIAL/REMOVAL OF MATERIAL** – Concrete and masonry debris designated for burial by the Engineer shall be buried at least three feet below the proposed final grade. Onsite organic debris and trash shall be disposed of in an Engineer approved offsite landfill in accordance with Sections 201 and 501 of the Special Provisions.

**TREE REMOVAL** – Trees removed shall be disposed of onsite per Section 201 of the Special Provisions.

**EROSION CONTROL** – The Contractor shall schedule his operations and take such precautions that may be necessary to prevent or minimize erosion. Failure to comply with this requirement shall cause the Contractor to be fully responsible for repairing any eroded areas and cleaning up areas or drainage structures that have become silted in or damaged.

**AGRICULTURAL GROUND LIMESTONE** – Immediately prior to seed bed preparation, fertilizer nutrients and agricultural ground limestone shall be uniformly spread at the rates specified in the plans.

If Excelsior or Special Excelsior Blanket is to be used, the blanket shall be placed the same day that the areas are seeded.



Location Map - Buckheart Highwall

State of Illinois  
 Department of Natural Resources  
 Office of Mines and Minerals  
 Abandoned Mined Lands Reclamation Division

Buckheart Highwall Remedial  
 Reclamation Project  
 AML-GFuE-2004  
 Fulton County

Drawn By: L. Faught  
 Checked By: \_\_\_\_\_  
 Date: 10/2020

Summary of Quantities/  
 General Notes/Location Map  
 Sheet  
 2 of 6

SW 1/4 of SW 1/4 of SECTION 26, T6N, R4E

301  
2334570.23  
1383670.79  
628.44



Turf Reinforcement Mat and rolled excelsior shall be installed according to manufacturer's instructions and Illinois NRCS standards.

NW 1/4 of NW 1/4 of SECTION 35, T6N, R4E

WATER LEVEL  
596.2

Area will be regraded by filling in gullies and erosional features and smoothed to result in unimpeded flow downhill. Additional fill material is available approximately 700 feet to the east if needed.

SEE SHEET 6 for borrow location.

AREA TO BE REGRADED AND COVERED WITH SPECIAL EXCELSIOR BLANKET.  
(10,664 SQ YD)  
(2.2 acres)

Bottom of Ditch (North)  
Bottom Elevation: 596

Top of Ditch (North)  
Bottom Elevation: 630

N:1383223  
E:2335297

DITCH TO BE REGRADED - NORTH  
(173 FEET)

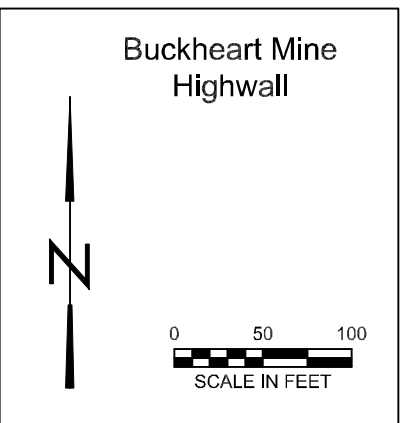
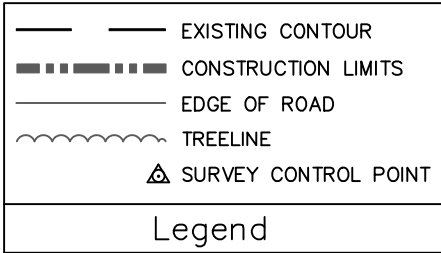
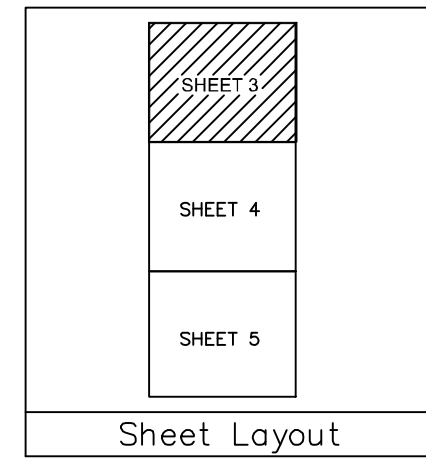
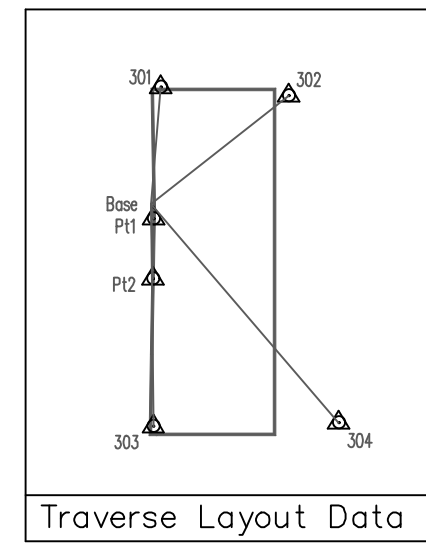
154 SQ YD OF TURF REINFORCEMENT MAT  
(8 FOOT WIDE)

51 CU YD OF EARTH EXCAVATION.  
(1 foot depth along 8 foot wide strip)

SEE TYPICAL SECTION FOR NORTH DITCH ON SHEET 6

N:1383071  
E:2335338

Rolled Excelsior  
(12 inch diameter each 10 foot long)



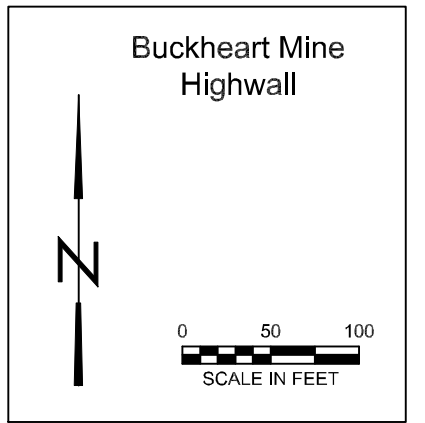
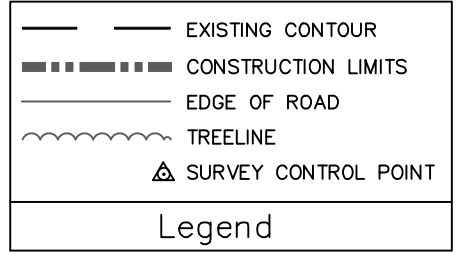
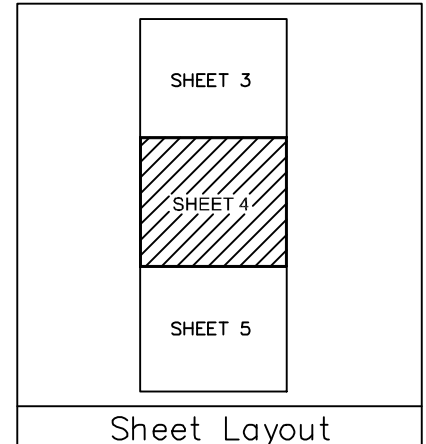
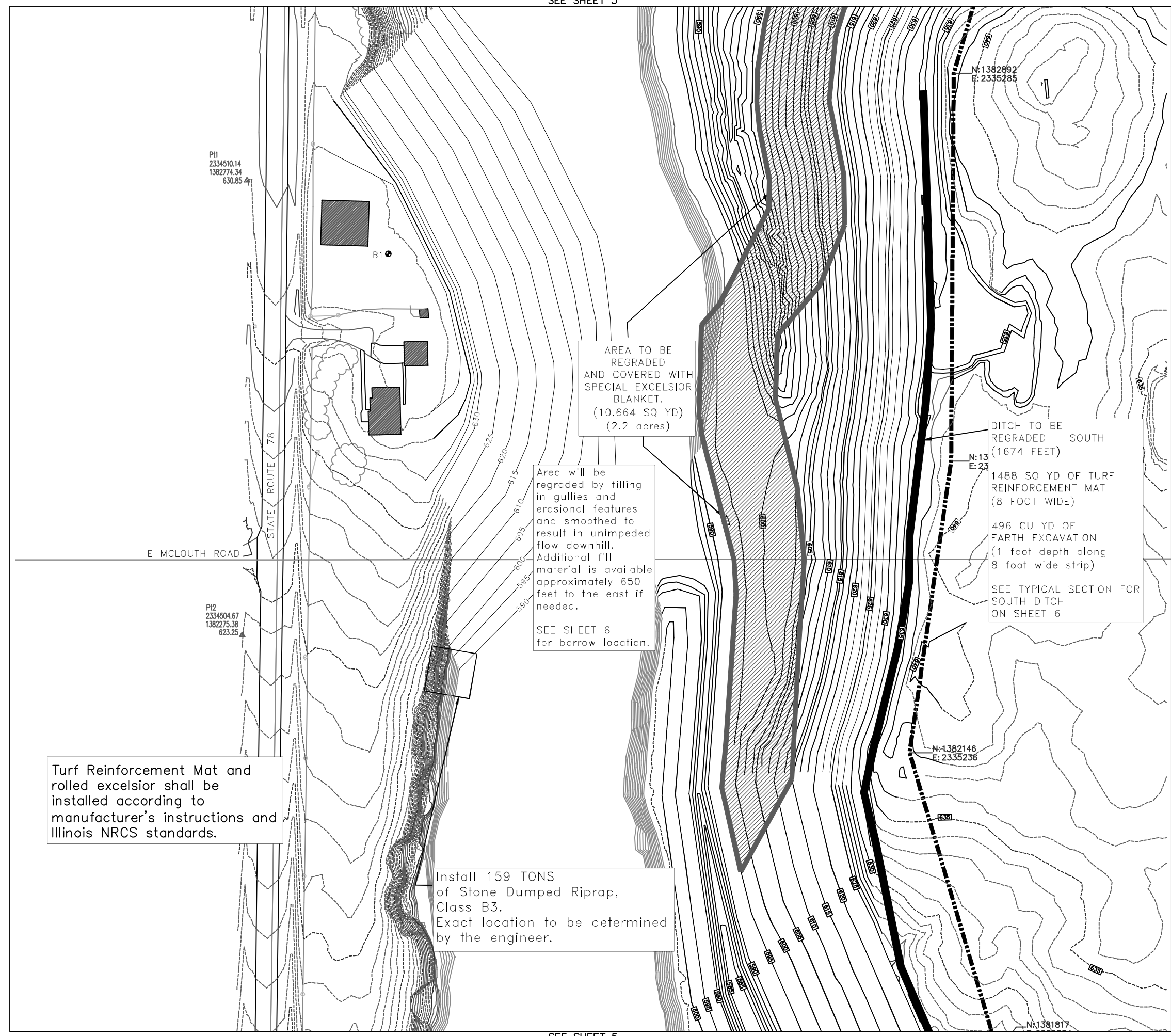
SEE SHEET 4

State of Illinois  
Department of Natural Resources  
Office of Mines and Minerals  
Abandoned Mined Lands Reclamation Division

Buckheart Highwall Remedial Reclamation Project  
AML-GFuE-2004  
Fulton County

Drawn By: I. Faught  
Checked By:  
Date: 10/2020

Existing & Proposed Conditions  
Sheet 3 of 6



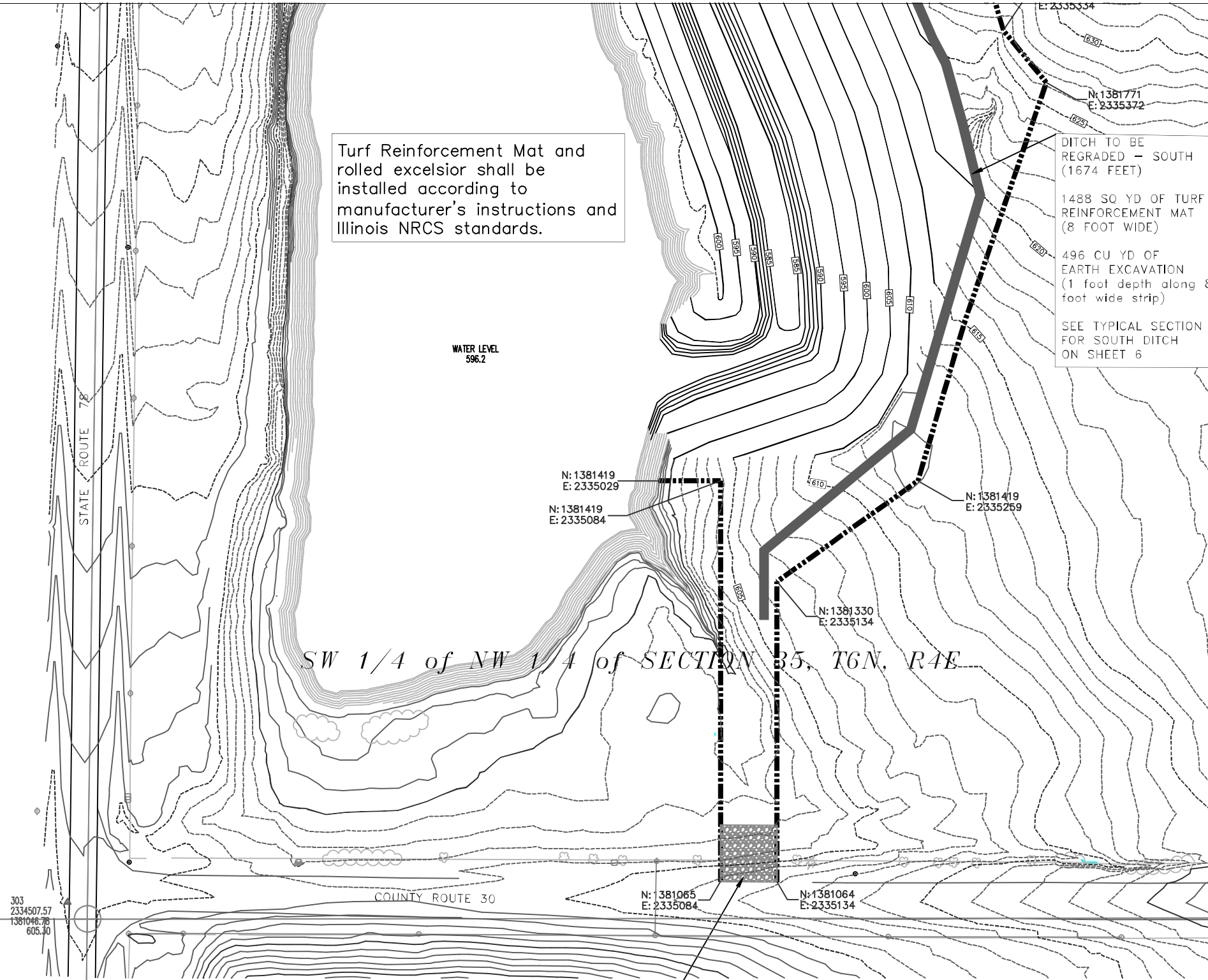
State of Illinois  
Department of Natural Resources  
Office of Mines and Minerals  
Abandoned Mined Lands Reclamation Division

Buckheart Highwall Remedial  
Reclamation Project  
AML-GFuE-2004  
Fulton County

Drawn By: I. Faught  
Checked By: \_\_\_\_\_  
Date: 10/2020

Existing & Proposed  
Conditions  
Sheet  
4 of 6

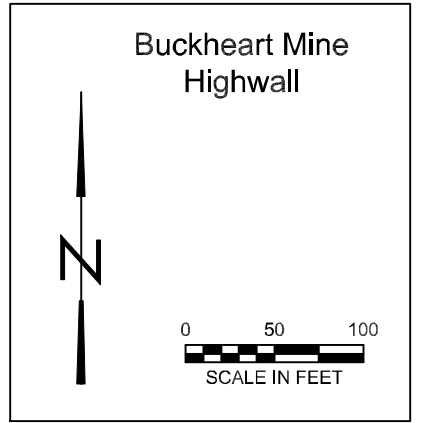
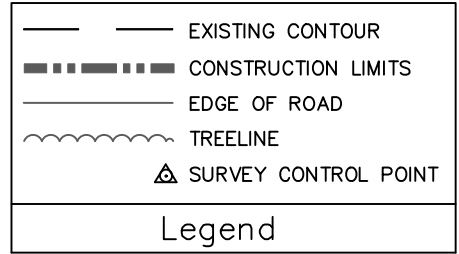
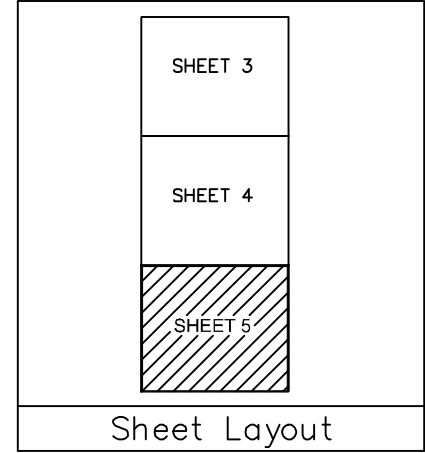
SE 1/4 of NE 1/4 of SECTION 34, T6N, R4E



Turf Reinforcement Mat and rolled excelsior shall be installed according to manufacturer's instructions and Illinois NRCS standards.

DITCH TO BE REGRADED - SOUTH (1674 FEET)  
 1488 SQ YD OF TURF REINFORCEMENT MAT (8 FOOT WIDE)  
 496 CU YD OF EARTH EXCAVATION (1 foot depth along 8 foot wide strip)  
 SEE TYPICAL SECTION FOR SOUTH DITCH ON SHEET 6

INSTALL 50' X 50' SITE ENTRANCE BY PLACING 278 SQ YD OF FILTER FABRIC AND 97 TON OF AGGREGATE SURFACE COURSE TYPE B CA-1

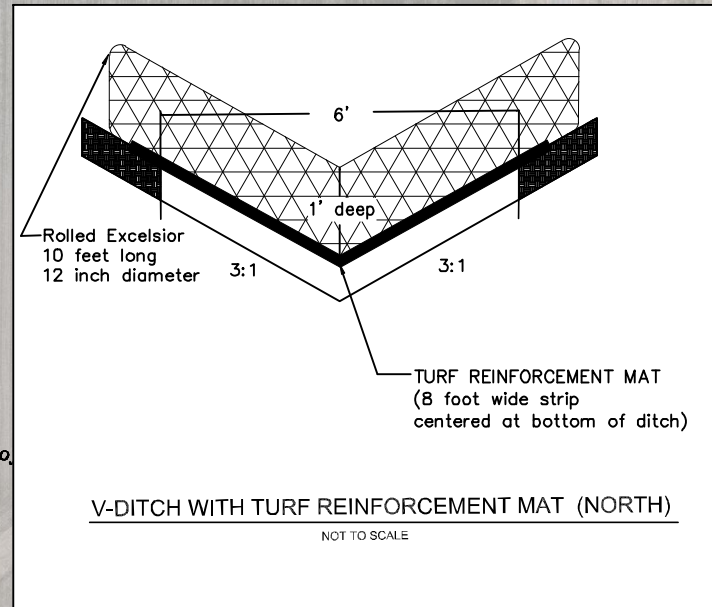


State of Illinois  
 Department of Natural Resources  
 Office of Mines and Minerals  
 Abandoned Mined Lands Reclamation Division

Buckheart Highwall Remedial Reclamation Project  
 AML-GFuE-2004  
 Fulton County

Drawn By: T. Faught Date: 10/2020  
 Checked By:

Existing & Proposed Conditions  
 Sheet 5 of 6



NW 1/4 of NW 1/4 of SECTION 35, T6N, R4E

Roller Excelsior  
(12 inch diameter, each 10 foot long)

DITCH TO BE REGRADED - NORTH  
(173 FEET)

154 SQ YD OF TURF REINFORCEMENT MAT (8 FOOT WIDE)

31 CU YD OF EARTH EXCAVATION, 1.1 foot depth along 8 foot wide strip)

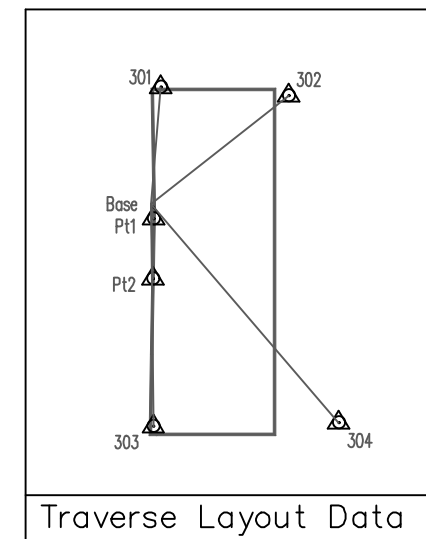
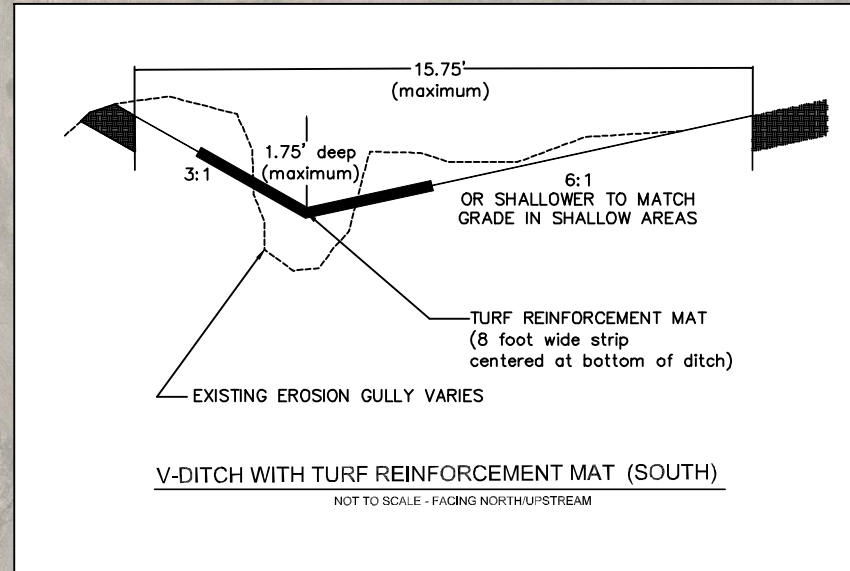
SEE TYPICAL SECTION FOR NORTH DITCH ON SHEET 6

AREA TO BE REGRADED AND COVERED WITH SPFG OR TOP SOIL BLANKET (0.664 SQ YD) (2.2 acres)

Area for potential additional borrow material, if needed, approximately 650 feet to the east of regrading area. Exact location and access to be coordinated with landowner.

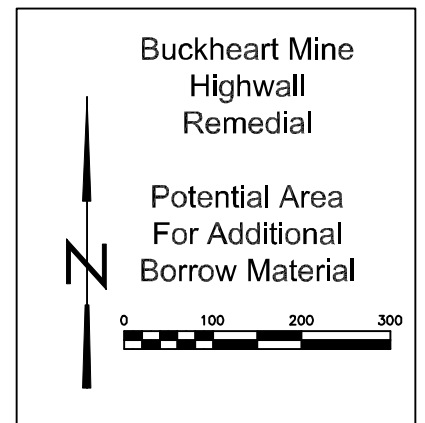
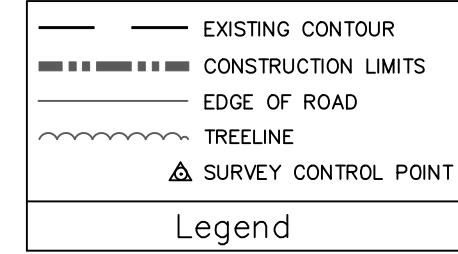
Turf Reinforcement Mat and rolled excelsior shall be installed according to manufacturer's instructions and Illinois NRCS standards.

Install 159 TONS of Stone Dumped Riprap, Class B3. Exact location to be determined by the engineer.



CP#	ELEV.	NORTHING	EASTING
Pt1	630.85	1382774.34	2334510.14
Pt2	623.25	1382275.38	2334504.67
301	628.44	1383870.79	2334570.23
302	637.04	1383799.19	2335634.59
303	605.30	1381046.78	2334507.57
304	627.42	1381076.75	2336051.21

Traverse Layout Data



of SECTION 34, T6N, R4E

6N, R4E