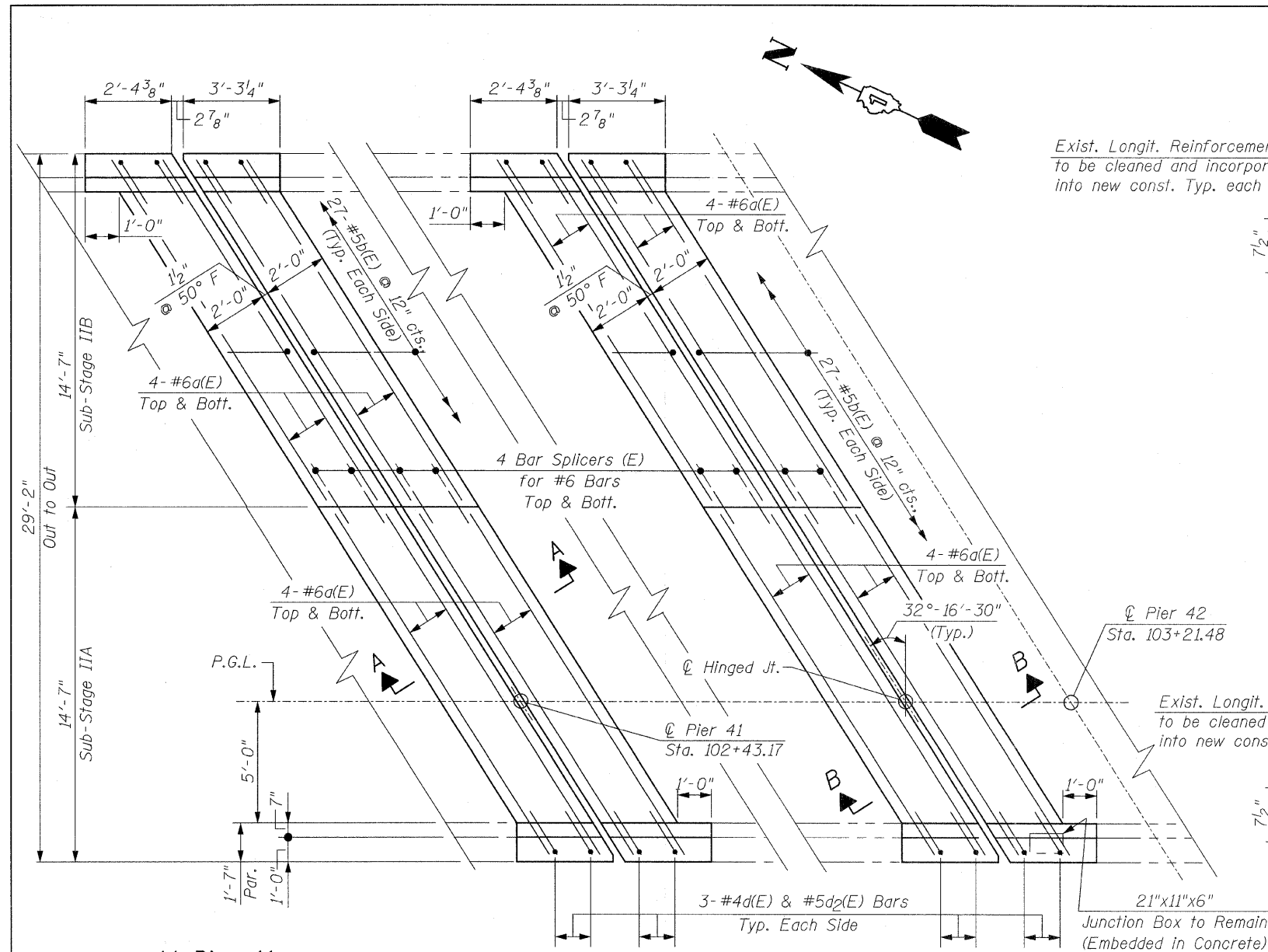


F.A.P. RTE.	SECTION	COUNTY	TOTAL SHEETS	SHEET NO.
373	0707-608 HB-I-4	COOK	40	27
STA.		TO STA.		
FED. ROAD DIST. NO.		ILLINOIS	FED. AID PROJECT	

CONTRACT NO. 60C94

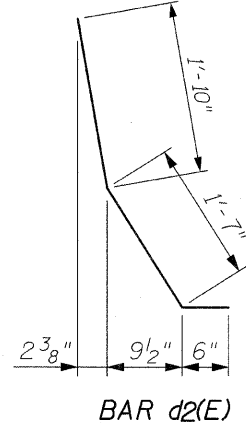
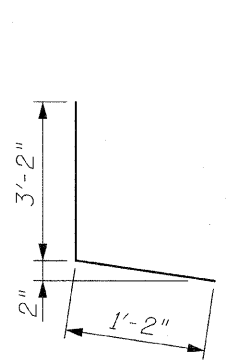
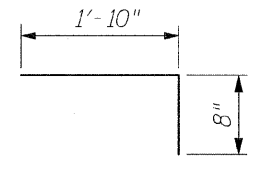
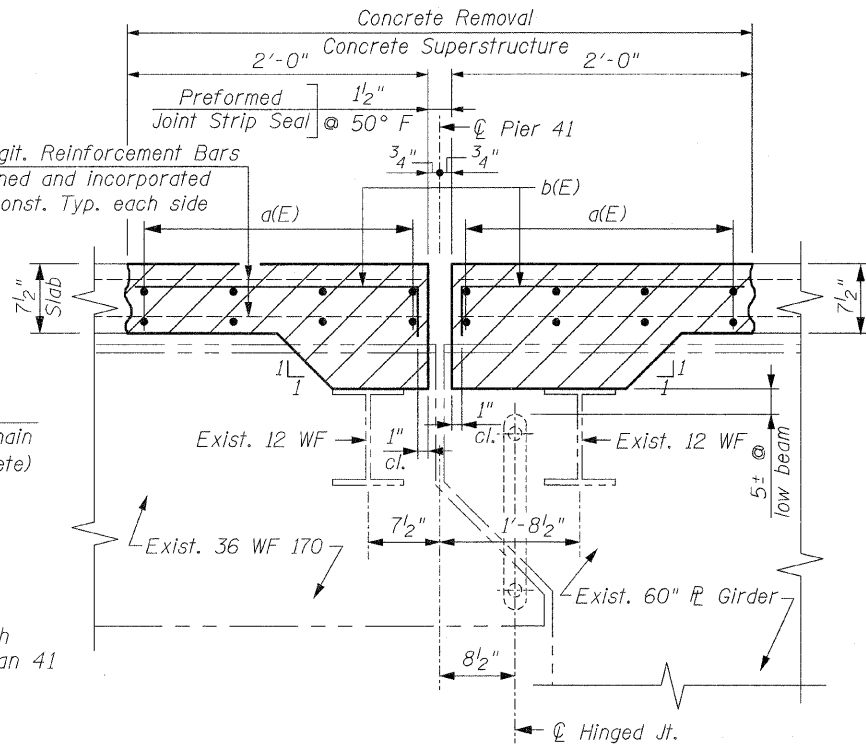
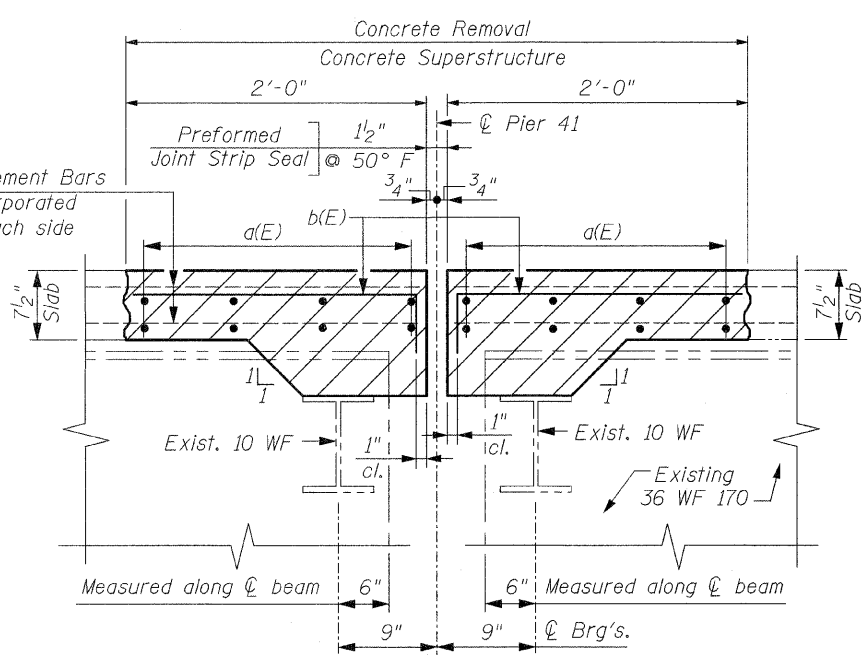
BILL OF MATERIAL

Bar	No.	Size	Length	Shape
a(E)	64	#6	17'-0"	—
b(E)	108	#5	2'-6"	└
d(E)	24	#4	4'-4"	L
d ₂ (E)	24	#5	3'-11"	L
Reinforcement Bars, Epoxy Coated			Pound	2,080
Concrete Removal			Cu. Yd.	11.0
Concrete Superstructure			Cu. Yd.	11.0
Bar Splicers			Each	32

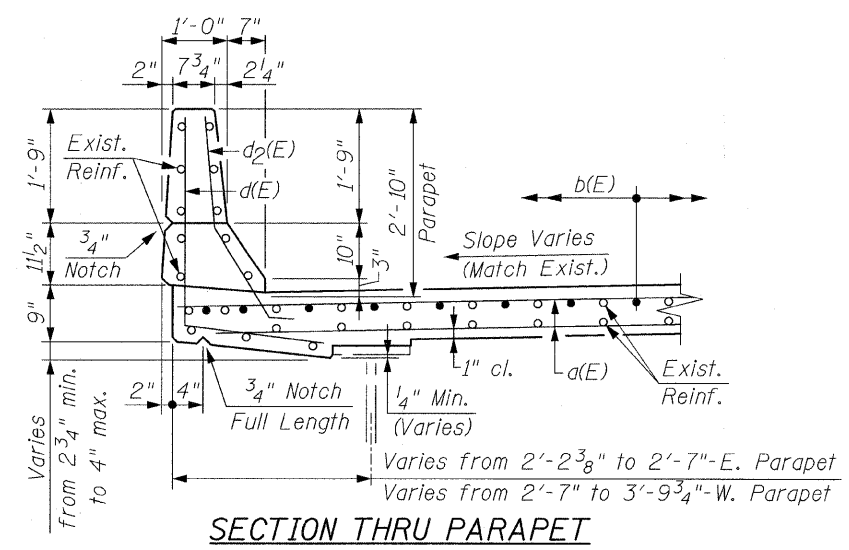
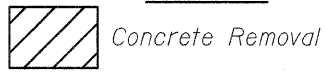


At Pier 41
Remove Neoprene Exp. Joint (2") & Replace with Preformed Strip Seal Joint at Pier 41. Reconstruct 1/2 width at a time. Reconstruct 2 ft. of Deck on both sides of the Joint.

At Hinged Joint
Remove Neoprene Exp. Joint (2 1/2") & Replace with Preformed Strip Seal Joint at Hinged Joint in Span 41



LEGEND:



The Contractor must use extreme caution during concrete removal and must not nick, cut or damage in any way, any of the steel beams. The existing Reinforcement Bars extending into the removal area shall be cleaned, straightened and incorporated into the new construction. Any Reinforcement Bars that are damaged during concrete removal shall be replaced with an approved Bar Splicer or Anchorage System. Cost is included with Concrete Removal.
Reinforcement Bars shall conform to the requirements of ASTM A-706, Gr. 60. See Special Provisions. Reinforcement Bars designated (E) shall be Epoxy Coated.
Cost for removal of existing Neoprene Exp. Joints is included in the cost of Concrete Removal.

REVISIONS	
NAME	DATE

ILLINOIS DEPARTMENT OF TRANSPORTATION
JOINT REPLACEMENT
IL. RTE. 171
OVER
DES PLAINES RIVER
F.A.P. RTE. 373 SECTION: 0707-608 HB-I-4
COOK COUNTY STATION 106+26.32
STRUCTURE NO. 016-1026
SCALE: NONE DRAWN BY: D.L./F.M.
DATE: DECEMBER 8, 2008 CHECKED BY: B.N.S./J.C.N.
CHRISTIAN-ROGE & ASSOC., INC.
CHICAGO ILLINOIS