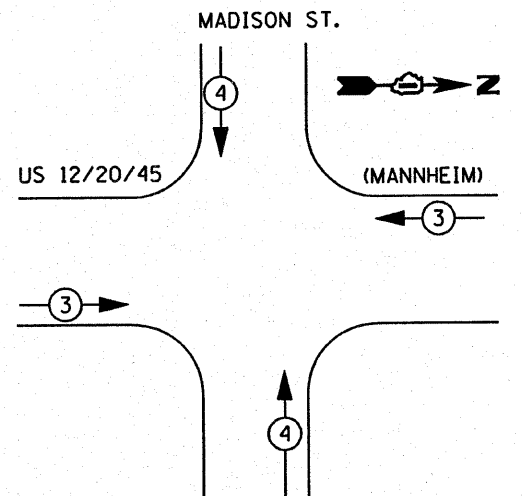
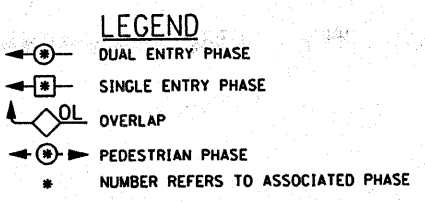


PHASE DESIGNATION DIAGRAM



SIGNAL INSTALLATION EMERGENCY VEHICLE PREEMPTION SEQUENCE

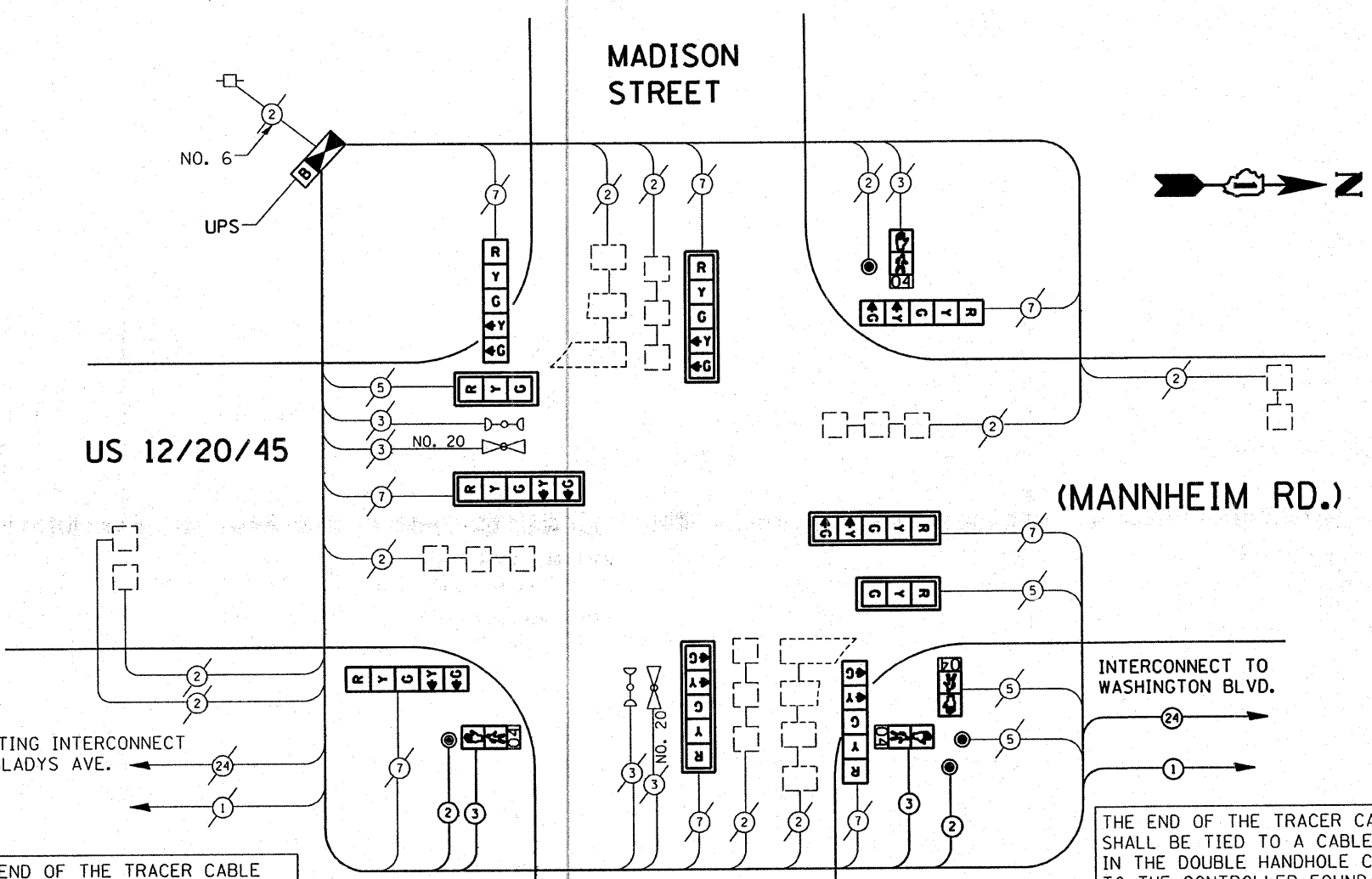
I.D.O.T. TRAFFIC SIGNAL INSTALLATION ELECTRICAL SERVICE REQUIREMENTS					TOTAL WATTAGE
TYPE	NO. LAMPS	WATTAGE INCAND.	WATTAGE LED	% OPERATION	
SIGNAL (RED)	10	135	17	0.50	85.00
(YELLOW)	10	135	25	0.25	67.50
(GREEN)	10	135	15	0.25	37.50
ARROW	16	135	12	0.10	19.20
PED. SIGNAL	2	90	25	1.00	50.00
CONTROLLER	1	100	100	1.00	100.00
ILLUM. SIGN		84		0.05	
TOTAL =					359.20

THE END OF THE TRACER CABLE SHALL BE TIED TO A CABLE HOOK IN THE DOUBLE HANDHOLE CLOSEST TO THE CONTROLLER FOUNDATION.

PROPOSED EMERGENCY VEHICLE PREEMPTOR		
EMERGENCY VEHICLE PREEMPTOR	3	4
MOVEMENT	→	↑ ↓

FOUNDATION (DEPTH)	FT. (m)	CABLE SLACK	FT. (m)	VERTICAL	FT. (m)
TYPE A - POST	4 (1.2)	HANDHOLE	6.5 (2.0)	ALL FOUNDATIONS	3.5 (1.0)
D - CONTROLLER	4 (1.2)	DOUBLE HANDHOLE	13 (4.0)	MAST ARM (L) POLE	20'-H.-2'-
E - M. ARM POLE		SIGNAL POST	2 (0.6)	16m+L-0.6m±	
24" (600mm)	10 (3.0)	CONTROLLER CAB.	1 (0.3)	BRACKET MOUNTED	13 (4.0)
30" (750mm)	15 (4.6)	FIBER OPTIC	13 (4.0)	PED. PUSHBUTTON	4 (1.2)
36" (900mm)	15 (4.6)	ELECTRIC SERVICE	1 (0.3)	ELECTRIC SERVICE	13.5 (4.1)
		GROUND CABLE	1 (0.3)	SERVICE TO GROUND	13.5 (4.1)
				POST MOUNTED	6 (1.8)

DESIGNED - BCK	REVISED -
DRAWN - BCK	REVISED -
CHECKED - DAD	REVISED -
DATE -	REVISED -



CABLE PLAN SCHEDULE OF QUANTITIES

- ITEM**
- TRANSCEIVER-FIBER OPTIC
 - INDUCTIVE LOOP DETECTOR
 - THERMOPLASTIC PAVEMENT MARKING LINE 12"
 - THERMOPLASTIC PAVEMENT MARKING LINE 24"
 - THERMOPLASTIC PAVEMENT MARKING REMOVAL
 - MAINTENANCE OF EXISTING TRAFFIC SIGNAL EQUIPMENT
 - FULL-ACTUATED CONTROLLER AND TYPE IV CABINET (SPECIAL)
 - ELECTRIC CABLE IN CONDUIT, SIGNAL NO. 14 2C
 - ELECTRIC CABLE IN CONDUIT, SIGNAL NO. 14 3C
 - TRAFFIC SIGNAL BACKPLATE, LOUVERED, ALUMINUM
 - PEDESTRIAN PUSH-BUTTON
 - REMOVE EXISTING TRAFFIC SIGNAL EQUIPMENT
 - SIGNAL HEAD, L.E.D., 1-FACE, 3 SECTION, MAST ARM MNTD.
 - SIGNAL HEAD, L.E.D., 1-FACE, 5 SECTION, MAST ARM MNTD.
 - SIGNAL HEAD, L.E.D., 1-FACE, 5 SECTION, BRKT. MNTD.
 - PEDESTRIAN SIGNAL HEAD, L.E.D., 1-FACE, BRKT. MTD. with COUNTDOWN TIMER
 - UNINTERRUPTIBLE POWER SUPPLY

UNIT	QUANTITY
EACH	1
EACH	9
FOOT	216
FOOT	75
FOOT	310
EACH	1
EACH	1
FOOT	457
FOOT	475
EACH	6
EACH	4
EACH	1
EACH	1
EACH	2
EACH	4
EACH	4
EACH	4
EACH	1

RESTORATION OF WORK AREA. RESTORATION OF THE TRAFFIC SIGNAL WORK AREA SHALL BE INCIDENTAL TO THE RELATED PAY ITEM SUCH AS FOUNDATION, CONDUIT, HANDHOLE, TRENCH AND BACKFILL, ETC., AND NO EXTRA COMPENSATION SHALL BE ALLOWED. ALL ROADWAY SURFACES SUCH AS SHOULDERS, MEDIAN, SIDEWALKS, PAVEMENT, ETC. SHALL BE REPLACED IN KIND. ALL DAMAGE TO MOWED LAWNS SHALL BE REPLACED WITH AN APPROVED SOD, AND ALL DAMAGE TO UNMOWED FIELDS SHALL BE SEEDED IN ACCORDANCE WITH STANDARD SPECIFICATIONS 252 AND 250 RESPECTIVELY.

NOTE: THE TRAFFIC SIGNAL CONTROL EQUIPMENT FOR THIS PROJECT SHALL BE "ECONOLITE" TO MATCH THE ADJACENT SYSTEM.

CABLE PLAN LEGEND

	PROPOSED	EXISTING
CONTROLLER CABINET	[Symbol]	[Symbol]
RAILROAD CONTROL CABINET	[Symbol]	[Symbol]
SERVICE INSTALLATION, (P) POLE OR (G) GROUND MOUNT	[Symbol]	[Symbol]
TELEPHONE CONNECTION	[Symbol]	[Symbol]
GROUND ROD AT (C) CONTROLLER, (H) HANDHOLE, (P) POST, (M) MAST ARM, OR (S) SERVICE	[Symbol]	[Symbol]
FIBER OPTIC CABLE IN CONDUIT, NUMBER OF FIBERS AS NOTED	[Symbol]	[Symbol]
ELECTRIC CABLE IN CONDUIT, NO. 14, UNLESS OTHERWISE NOTED, NUMBER OF CONDUCTORS AS NOTED	[Symbol]	[Symbol]
GROUND CABLE IN CONDUIT NO. 6 COPPER (GREEN)	[Symbol]	[Symbol]
SIGNAL FACE WITH BACKPLATE. "P" INDICATES PROGRAMMED HEAD	[Symbol]	[Symbol]
12" (300mm) RED WITH 8" (200mm) YELLOW AND GREEN TRAFFIC SIGNAL FACE	[Symbol]	[Symbol]
12" (300mm) TRAFFIC SIGNAL SECTION	[Symbol]	[Symbol]
12" (300mm) PEDESTRIAN SIGNAL SECTION with COUNTDOWN TIMER	[Symbol]	[Symbol]
ILLUMINATED SIGN "NO LEFT TURN"	[Symbol]	[Symbol]
ILLUMINATED SIGN "NO RIGHT TURN"	[Symbol]	[Symbol]
PUSHBUTTON DETECTOR	[Symbol]	[Symbol]
DETECTOR LOOP	[Symbol]	[Symbol]
PERFORMED DETECTOR LOOP	[Symbol]	[Symbol]
MICROWAVE VEHICLE SENSOR	[Symbol]	[Symbol]
VIDEO DETECTOR	[Symbol]	[Symbol]
CLOSED CIRCUIT TV	[Symbol]	[Symbol]
EMERGENCY VEHICLE SYSTEM DETECTOR	[Symbol]	[Symbol]
CONFIRMATION BEACON	[Symbol]	[Symbol]
UNINTERRUPTIBLE POWER SUPPLY	[Symbol]	[Symbol]