

F.A.U. RTE.	SECTION	COUNTY	TOTAL SHEETS	SHEET NO.
3562	430 Y-1 BR	COOK	15	1
FED. ROAD DIST. NO. 1		ILLINOIS	CONTRACT NO. 60E60	

STATE OF ILLINOIS  
DEPARTMENT OF TRANSPORTATION  
DIVISION OF HIGHWAYS

**PROPOSED  
HIGHWAY PLANS**

F.A.U. 3562 / JOLIET ROAD  
SECTION: 430 Y-1 BR  
OVER FLAGG CREEK  
BRIDGE DECK REPAIR  
COUNTY: COOK  
C-91-494-08

FOR INDEX OF SHEETS, SEE SHEET NO. 2

DESIGN DESIGNATION:  
SPEED LIMIT : 40 M.P.H.  
2006 ADT = 10,100

IMPROVEMENT LOCATED IN THE  
VILLAGE OF BURR RIDGE

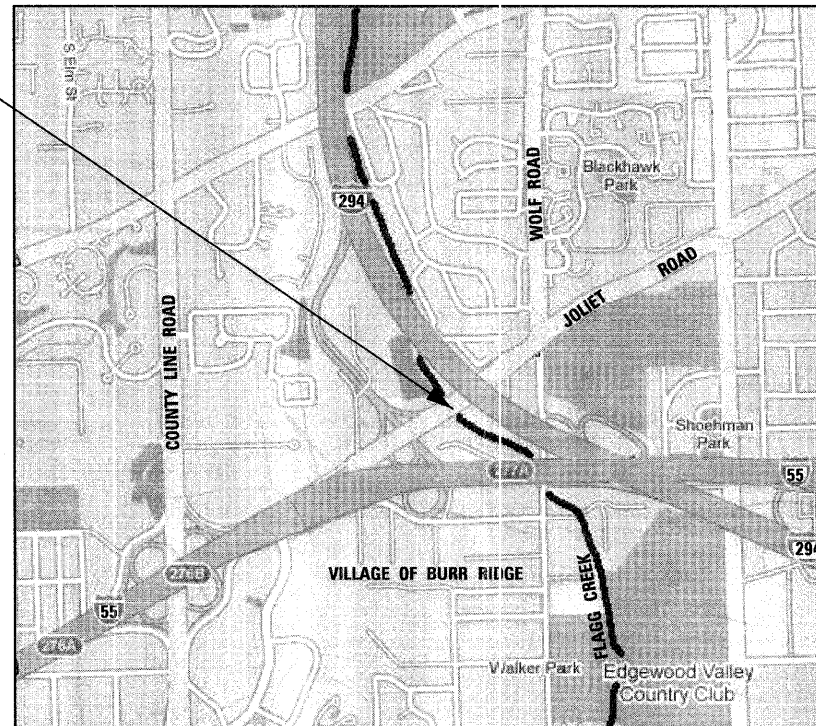
D-91-494-08



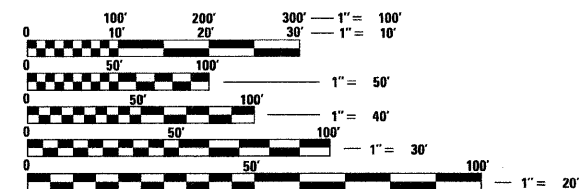
LOCATION OF SECTION INDICATED THIS: - [black rectangle] -

LYONS TOWNSHIP  
R. 12 E.

PROJECT LOCATION:  
JOLIET ROAD  
OVER FLAGG CREEK  
S.N. 016-0393



T. 38 N.



FULL SIZE PLANS HAVE BEEN PREPARED USING STANDARD ENGINEERING SCALES. REDUCED SIZED PLANS WILL NOT CONFORM TO STANDARD SCALES. IN MAKING MEASUREMENTS ON REDUCED PLANS, THE ABOVE SCALES MAY BE USED.

J.U.I.E.  
JOINT UTILITY LOCATING INFORMATION FOR EXCAVATORS  
1-800-892-0123  
OR 811

GROSS LENGTH OF PROJECT = 115 FEET = 0.022 MILES  
NET LENGTH OF PROJECT = 115 FEET = 0.022 MILES

STATE OF ILLINOIS  
DEPARTMENT OF TRANSPORTATION  
DIVISION OF HIGHWAYS

SUBMITTED DECEMBER 22, 2008

Diane M. O'Keefe  
DEPUTY DIRECTOR OF HIGHWAYS, REGION ONE ENGINEER

January 30, 2009  
Charles J. Ingersoll  
ENGINEER OF DESIGN AND ENVIRONMENT

January 30, 2009  
Christine M. Reed  
DIRECTOR OF HIGHWAYS, CHIEF ENGINEER



Bhadresh N. Shah  
BHADRESH N. SHAH, S.E., P.E.  
EXPIRES: 11-30-2010

PRINTED BY THE AUTHORITY  
OF THE STATE OF ILLINOIS

DISTRICT ONE - PLAN PREP ENGINEER: KEN ENG (847) 705-4247

CONTRACT NO. 60E60

CHRISTIAN-ROGE & ASSOCIATES, INC.  
ENGINEERS - PLANNERS - SURVEYORS  
211 W. WACKER DRIVE CHICAGO, IL 60606  
TELEPHONE: 312-372-2023