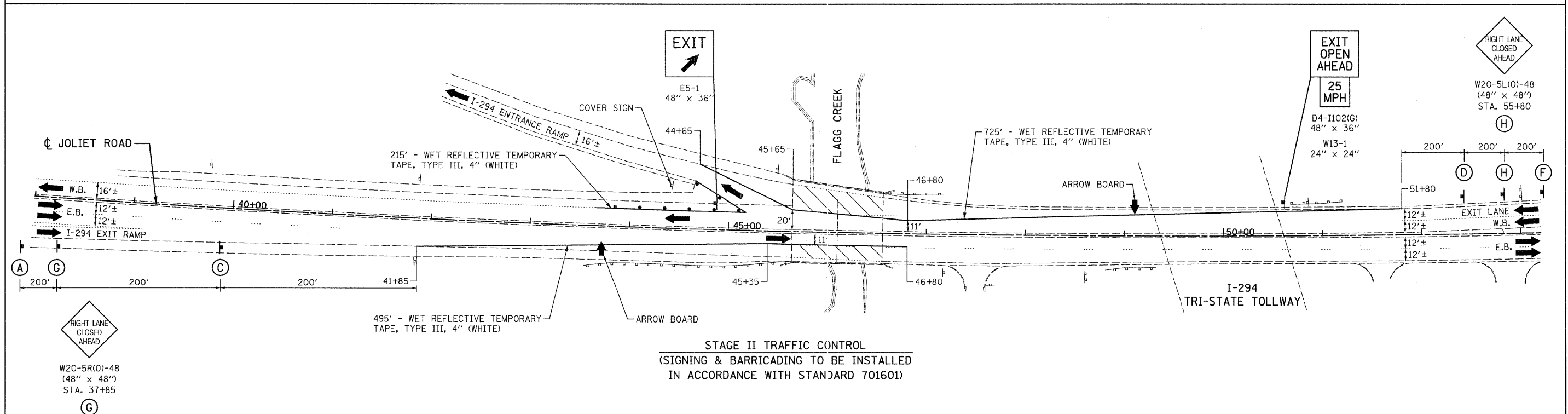


EXIST. CURVE
 P.I. STA. = 48+59.28
 $\Delta = 7^\circ 03' 20''$ (LT)
 $D = 0^\circ 20' 00''$
 $R = 17,188.74'$
 $T = 1,059.67'$
 $L = 2,116.67'$
 $E = 32.63'$
 P.C. STA. = 37+99.61
 P.T. STA. = 59+16.28

TRAFFIC CONTROL AND STAGING LEGEND

- WORK ZONE
- DIRECTION OF TRAFFIC
- PAVEMENT MARKING REMOVAL
- TYPE III BARRICADES WITH FLASHING LIGHTS
- TEMPORARY CONCRETE BARRIER
- BARRICADE TYPE II OR DRUMS @ 25' C-C



FILE NAME = D160668-sht-staging2.dwg
 PLOT DATE = 12/30/2008

CHRISTIAN-ROGE & ASSOCIATES, INC.
 ENGINEERS-PLANNERS-SURVEYORS
 211 WEST WACKER DRIVE
 CHICAGO, ILLINOIS 60606
 PHONE: (312)372-2023 FAX: (312)372-5274

DESIGNED - S.J.P.
 DRAWN - A.C.S.
 CHECKED - E.J.M.
 DATE - DECEMBER 30, 2008

REVISED -
 REVISED -
 REVISED -
 REVISED -

STATE OF ILLINOIS
DEPARTMENT OF TRANSPORTATION

SUGGESTED TRAFFIC CONTROL AND STAGING PLAN
JOLIET ROAD OVER FLAGG CREEK

SCALE: 1" = 50' SHEET NO. 2 OF 2 SHEETS STA. 45+65 TO STA. 46+80

F.A.U. RTE.	SECTION	COUNTY	TOTAL SHEETS	SHEET NO.
3562	430 Y-1 BR	COOK	15	5
FED. ROAD DIST. NO. 1 ILLINOIS FED. AID PROJECT			CONTRACT NO. 60E60	