

F.A.U. RTE.	SECTION	COUNTY	TOTAL SHEETS	SHEET NO.
3562	430 Y-1 BR	COOK	15	1
FED. ROAD DIST. NO. 1		ILLINOIS	CONTRACT NO. 60E60	

STATE OF ILLINOIS
DEPARTMENT OF TRANSPORTATION
DIVISION OF HIGHWAYS

**PROPOSED
HIGHWAY PLANS**

F.A.U. 3562 / JOLIET ROAD
SECTION: 430 Y-1 BR
OVER FLAGG CREEK
BRIDGE DECK REPAIR
COUNTY: COOK
C-91-494-08

FOR INDEX OF SHEETS, SEE SHEET NO. 2

DESIGN DESIGNATION:
SPEED LIMIT : 40 M.P.H.
2006 ADT = 10,100

IMPROVEMENT LOCATED IN THE
VILLAGE OF BURR RIDGE

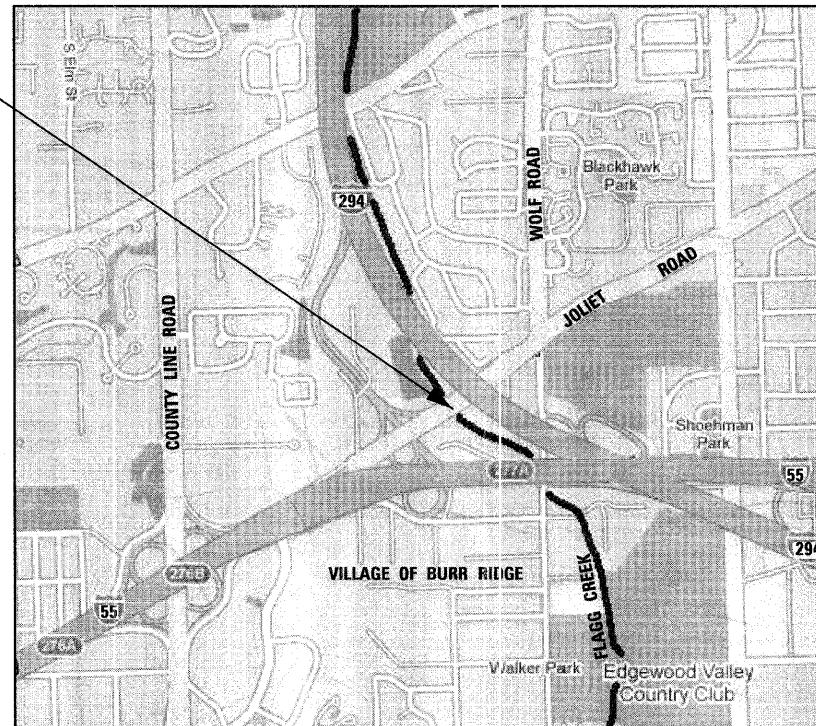
D-91-494-08



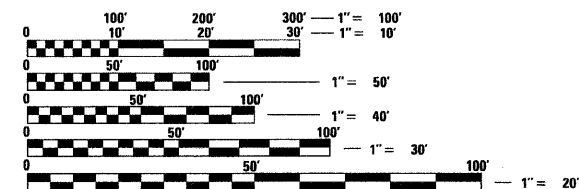
LOCATION OF SECTION INDICATED THIS: - [black rectangle] -

LYONS TOWNSHIP
R. 12 E.

PROJECT LOCATION:
JOLIET ROAD
OVER FLAGG CREEK
S.N. 016-0393



T. 38 N.



FULL SIZE PLANS HAVE BEEN PREPARED USING STANDARD ENGINEERING SCALES. REDUCED SIZED PLANS WILL NOT CONFORM TO STANDARD SCALES. IN MAKING MEASUREMENTS ON REDUCED PLANS, THE ABOVE SCALES MAY BE USED.

J.U.I.E.
JOINT UTILITY LOCATING INFORMATION FOR EXCAVATORS
1-800-892-0123
OR 811

GROSS LENGTH OF PROJECT = 115 FEET = 0.022 MILES
NET LENGTH OF PROJECT = 115 FEET = 0.022 MILES



Bhadresh N. Shah
BHADRESH N. SHAH, S.E., P.E.
EXPIRES: 11-30-2010

STATE OF ILLINOIS
DEPARTMENT OF TRANSPORTATION
DIVISION OF HIGHWAYS

SUBMITTED DECEMBER 22, 2008

Diane M. O'Keefe
DEPUTY DIRECTOR OF HIGHWAYS, REGION ONE ENGINEER

January 30, 2009
Charles J. Ingersoll
ENGINEER OF DESIGN AND ENVIRONMENT

January 30, 2009
Christine M. Reed
DIRECTOR OF HIGHWAYS, CHIEF ENGINEER

PRINTED BY THE AUTHORITY
OF THE STATE OF ILLINOIS

DISTRICT ONE - PLAN PREP ENGINEER: KEN ENG (847) 705-4247

CONTRACT NO. 60E60

CHRISTIAN-ROGE & ASSOCIATES, INC.
ENGINEERS - PLANNERS - SURVEYORS
211 W. WACKER DRIVE CHICAGO, IL 60606
TELEPHONE: 312-372-2023

INDEX OF SHEETS

1	COVER SHEET
2	INDEX OF SHEETS, LIST OF STATE STANDARDS AND GENERAL NOTES JOLIET ROAD OVER FLAGG CREEK
3	SUMMARY OF QUANTITIES JOLIET ROAD OVER FLAGG CREEK
4	SUGGESTED MAINTENANCE OF TRAFFIC NOTES AND DETAILS JOLIET ROAD OVER FLAGG CREEK
5	SUGGESTED TRAFFIC CONTROL AND STAGING PLAN JOLIET ROAD OVER FLAGG CREEK
6	PAVEMENT MARKING PLAN JOLIET ROAD OVER FLAGG CREEK
7 - 11	STRUCTURAL DRAWINGS - JOLIET ROAD OVER FLAGG CREEK
12	TRAFFIC CONTROL AND PROTECTION FOR SIDE ROADS, INTERSECTIONS, AND DRIVEWAYS
13	TYPICAL APPLICATIONS RAISED REFLECTIVE PAVEMENT MARKERS (SNOW-PLOW RESISTANT)
14	DISTRICT ONE TYPICAL PAVEMENT MARKINGS
15	ARTERIAL ROAD INFORMATION SIGN

LIST OF STATE STANDARDS

STANDARD NO.	DESCRIPTION
000001-05	STANDARD SYMBOLS, ABBREVIATIONS AND PATTERNS
701601-00	URBAN LANE CLOSURE, MULTILANE, 1W OR 2W WITH NONTRAVERSABLE MEDIAN
701901-01	TRAFFIC CONTROL DEVICES
704001-05	TEMPORARY CONCRETE BARRIER
780001-02	TYPICAL PAVEMENT MARKINGS

GENERAL NOTES

1. FORTY-EIGHT HOURS BEFORE STARTING EXCAVATION, THE CONTRACTOR WILL CALL J.U.L.I.E. (1-800-892-0123) OR 811 TO HAVE THE LOCATION OF EXISTING UTILITIES STAKED.
2. THE CONTRACTOR SHALL OBTAIN ALL NECESSARY PERMITS, AS REQUIRED, PRIOR TO COMMENCING WITH CONSTRUCTION.
3. THESE PLANS HAVE BEEN PREPARED FROM NOTES RECEIVED FROM I.D.O.T. FIELD MAINTENANCE ENGINEERS.
4. DO NOT SCALE PLANS FOR CONSTRUCTION DIMENSIONS.
5. PLAN DIMENSIONS AND DETAILS RELATIVE TO EXISTING PLANS ARE SUBJECT TO ROUTINE VARIATIONS. THE CONTRACTOR SHALL FIELD VERIFY EXISTING DIMENSIONS AND DETAILS AFFECTING NEW CONSTRUCTION AND MAKE NECESSARY APPROVED ADJUSTMENTS PRIOR TO CONSTRUCTION OR ORDERING MATERIALS. SUCH VARIATIONS SHALL NOT BE CAUSE FOR ADDITIONAL COMPENSATION FOR A CHANGE IN THE SCOPE OF THE WORK, HOWEVER, THE CONTRACTOR WILL BE PAID FOR THE QUANTITY ACTUALLY FURNISHED BASED UPON THE UNIT PRICE.
6. THE CONTRACTOR WILL NOT BE ALLOWED TO SET UP A YARD OR FIELD OFFICE ON STATE PROPERTY WITHOUT WRITTEN PERMISSION FROM THE DEPARTMENT.
7. SAW CUTTING PRIOR TO ANY REMOVAL ITEMS NOTED ON THE PLANS OR DIRECTED BY THE ENGINEER SHALL BE CONSIDERED INCLUDED IN THE COST OF THE ITEMS BEING REMOVED.
8. THE CONTRACTOR SHALL USE CARE IN REMOVING OR EXCAVATING NEAR ALL EXISTING ITEMS WHICH WILL REMAIN. ANY DAMAGE DONE TO EXISTING ITEMS BY THE CONTRACTOR SHALL BE REPAIRED AT THE CONTRACTOR'S EXPENSE.
9. THE CONTRACTOR SHALL TAKE ALL NECESSARY MEASURES TO ASSURE THAT NO DEBRIS FALLS IN THE CREEK. THE COST OF THIS WORK SHALL BE INCLUDED IN DECK SLAB REPAIR (FULL DEPTH, TYPE II).
10. THE CONTRACTOR SHALL CONTACT THE TRAFFIC CONTROL SUPERVISOR AT (847) 705-4470 A MINIMUM OF 72 HOURS PRIOR TO THE PLACEMENT OF ANY TEMPORARY TRAFFIC CONTROL DEVICES.
11. THE CONTRACTOR SHALL CONTACT CORA MATHIS, THE AREA TRAFFIC FIELD ENGINEER, AT (815) 485-6475 TWO (2) WEEKS PRIOR TO THE PLACEMENT OF PERMANENT PAVEMENT MARKINGS.
12. ALL DAMAGE TO EXISTING PAVEMENT MARKINGS OUTSIDE THE REMOVAL LINE SHOWN ON THE PLANS SHALL BE REPLACED AT THE CONTRACTOR'S EXPENSE. QUANTITIES FOR THERMOPLASTIC AND POLYUREA PAVEMENT MARKINGS ARE PROVIDED FOR USE BY THE ENGINEER TO REPLACE WORN EXISTING PAVEMENT MARKINGS.

FILE NAME = D:\6060-shr-gennote.dgn
PLOT DATE = 12/31/2008



CHRISTIAN-ROGE & ASSOCIATES, INC.
ENGINEERS-PLANNERS-SURVEYORS
211 WEST WACKER DRIVE
CHICAGO, ILLINOIS 60606
PHONE: (312)372-2023 FAX: (312)372-5274

DESIGNED - S.J.P.	REVISED -
DRAWN - A.C.S.	REVISED -
CHECKED - E.J.M.	REVISED -
DATE - DECEMBER 30, 2008	REVISED -

**STATE OF ILLINOIS
DEPARTMENT OF TRANSPORTATION**

**INDEX OF SHEETS, LIST OF STATE STANDARDS AND GENERAL NOTES
JOLIET ROAD OVER FLAGG CREEK**

SCALE: NONE SHEET NO. 1 OF 1 SHEETS STA. 45+65 TO STA. 46+80

F.A.U. RTE.	SECTION	COUNTY	TOTAL SHEETS	SHEET NO.
3562	430 Y-1 BR	COOK	15	2
FED. ROAD DIST. NO. 1 ILLINOIS FED. AID PROJECT				CONTRACT NO. 60E60

SUMMARY OF QUANTITIES			URBAN	CONSTRUCTION TYPE CODE
CODE NO	ITEM	UNIT	TOTAL QUANTITIES	SFTY-2A
42001300	PROTECTIVE COAT	SQ YD	41	41
50102400	CONCRETE REMOVAL	CU YD	15.0	15.0
50300255	CONCRETE SUPERSTRUCTURE	CU YD	15.2	15.2
50800205	REINFORCEMENT BARS, EPOXY COATED	POUND	4,830	4,830
67000400	ENGINEER'S FIELD OFFICE, TYPE A	CAL MO	6	6
67100100	MOBILIZATION	L SUM	1	1
70101800	TRAFFIC CONTROL AND PROTECTION, (SPECIAL)	L SUM	1	1
70103815	TRAFFIC CONTROL SURVEILLANCE	CAL DA	10	10
70400100	TEMPORARY CONCRETE BARRIER	FOOT	500	500
* 78000100	THERMOPLASTIC PAVEMENT MARKING - LETTERS AND SYMBOLS	SQ FT	72	72
* 78000200	THERMOPLASTIC PAVEMENT MARKING - LINE 4"	FOOT	250	250
* 78000400	THERMOPLASTIC PAVEMENT MARKING - LINE 6"	FOOT	500	500
* 78000500	THERMOPLASTIC PAVEMENT MARKING - LINE 8"	FOOT	400	400
* 78000600	THERMOPLASTIC PAVEMENT MARKING - LINE 12"	FOOT	200	200
* 78008210	POLYUREA PAVEMENT MARKING TYPE I - LINE 4"	FOOT	30	30
* 78008240	POLYUREA PAVEMENT MARKING TYPE I - LINE 8"	FOOT	300	300
* 78008250	POLYUREA PAVEMENT MARKING TYPE I - LINE 12"	FOOT	70	70
* 78100105	RAISED REFLECTIVE PAVEMENT MARKER (BRIDGE)	EACH	4	4
78300100	PAVEMENT MARKING REMOVAL	SQ FT	1,000	1,000
X0320887	POLYMER CONCRETE	CU FT	1	1
X0322256	TEMPORARY INFORMATION SIGNING	SQ FT	51	51
X0323076	SILICONE JOINT SEALER, 1 3/4"	FOOT	238	238
X0325303	STRUCTURAL REPAIR OF CONCRETE (DEPTH GREATER THAN 5 INCHES)	SQ FT	24	24
X0325305	STRUCTURAL REPAIR OF CONCRETE (DEPTH EQUAL TO OR LESS THAN 5 INCHES)	SQ FT	60	60
X0325775	WET REFLECTIVE TEMPORARY TAPE, TYPE III, 4 INCH	FOOT	2,760	2,760
Z0016002	DECK SLAB REPAIR (FULL DEPTH, TYPE II)	SQ YD	36	36
Z0016200	DECK SLAB REPAIR (PARTIAL)	SQ YD	61	61
Z0030240	IMPACT ATTENUATORS, TEMPORARY (NON-REDIRECTIVE), TEST LEVEL 2	EACH	2	2
Z0073200	TEMPORARY SHORING AND CRIBBING	EACH	1	1

* SPECIALTY ITEM

FILE NAME = D160E60-shr-S00.dgn
PLOT DATE = 12/31/2008

CR & A
CHRISTIAN-ROGE & ASSOCIATES, INC.
ENGINEERS-PLANNERS-SURVEYORS
211 WEST WACKER DRIVE
CHICAGO, ILLINOIS 60606
PHONE: (312)372-2023 FAX: (312)372-5274

DESIGNED - S.J.P.	REVISED -
DRAWN - A.C.S.	REVISED -
CHECKED - E.J.M.	REVISED -
DATE - DECEMBER 30, 2008	REVISED -

STATE OF ILLINOIS
DEPARTMENT OF TRANSPORTATION

SUMMARY OF QUANTITIES
JOLIET ROAD OVER FLAGG CREEK

SCALE: NONE SHEET NO. 1 OF 1 SHEETS STA. 45+65 TO STA. 46+80

F.A.U. RTE.	SECTION	COUNTY	TOTAL SHEETS	SHEET NO.
3562	430 Y-1 BR	COOK	15	3
FED. ROAD DIST. NO. 1 ILLINOIS FED. AID PROJECT			CONTRACT NO. 60E60	

SUGGESTED STAGING AND MAINTENANCE OF TRAFFIC

CONSTRUCTION STAGING

STAGE I

- PERFORM FULL AND PARTIAL DEPTH PATCHING INCLUDING THE ELIMINATION OF THE LONGITUDINAL JOINT ON THE INSIDE LANES OF THE BRIDGE.
- PERFORM STRUCTURAL REPAIR OF CONCRETE TO THE PIER.
- RESEAL THE TRANSVERSE JOINTS WITH SILICONE.

STAGE II

- PERFORM FULL AND PARTIAL DEPTH PATCHING ON THE OUTSIDE LANES OF THE BRIDGE.
- PERFORM STRUCTURAL REPAIR OF CONCRETE TO THE PIER.
- RESEAL THE TRANSVERSE JOINTS WITH SILICONE.

MAINTENANCE OF TRAFFIC

STAGE I

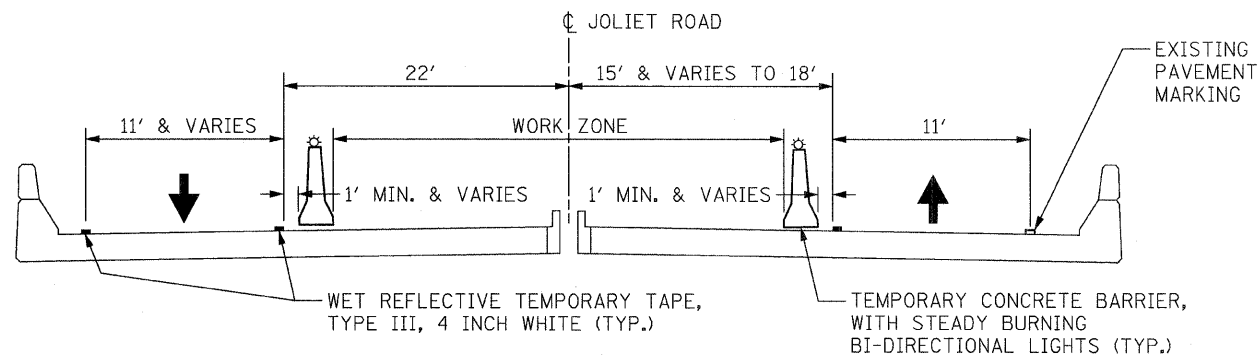
- PLACE ADVANCED SIGNING ON I-294 EXIT RAMP AS SHOWN ON I.D.O.T. STANDARD 701606.
- CLOSE THE INSIDE LANE IN BOTH DIRECTIONS AS SHOWN ON THE SUGGESTED TRAFFIC CONTROL AND STAGING PLAN USING I.D.O.T. STANDARD 701606.
- TEMPORARY CONCRETE BARRIER CAN BE REMOVED TO COMPLETE THE PATCHING AFTER THE LONGITUDINAL JOINT HAS BEEN RECONSTRUCTED.

STAGE II

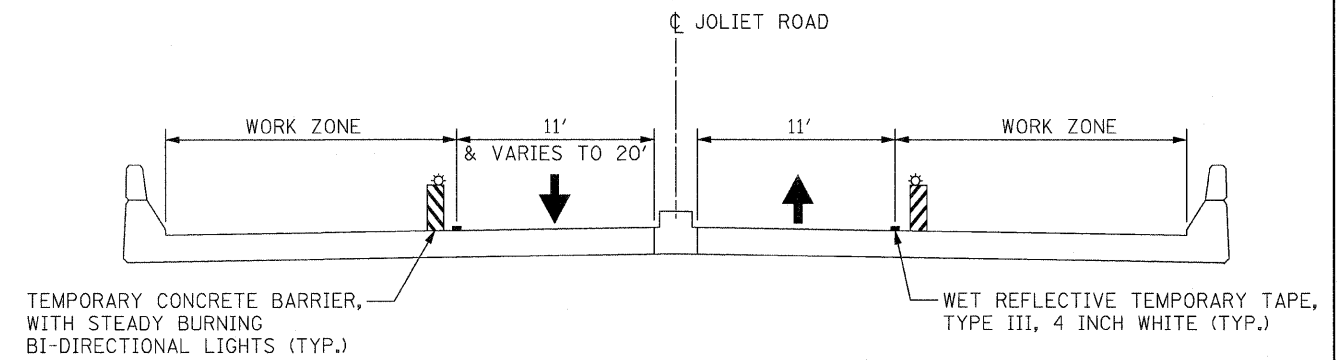
- CLOSE THE OUTSIDE LANE IN BOTH DIRECTIONS AS SHOWN ON THE TRAFFIC CONTROL AND STAGING PLAN USING I.D.O.T. STANDARD 701606.

TRAFFIC CONTROL GENERAL NOTES

1. THE CONTRACTOR SHALL NOT MOUNT SIGNS ON EXISTING SIGNS.
2. CONTRACTOR SHALL MAINTAIN SATISFACTORY INGRESS AND EGRESS TO ADJACENT PROPERTIES THROUGHOUT THE CONSTRUCTION.
3. ALL TEMPORARY PAVEMENT MARKING SHALL BE WET REFLECTIVE TEMPORARY TAPE, TYPE III.
4. USE SUGGESTED TRAFFIC CONTROL PLAN IN CONJUNCTION WITH STANDARD 701601.
5. THE COST OF THE ADDITIONAL SIGNING AND BARRICADING FOR BOTH RAMPS SHALL BE INCLUDED IN THE COST OF TRAFFIC CONTROL AND PROTECTION (SPECIAL).



DECK CROSS SECTION - STAGE I



DECK CROSS SECTION - STAGE II

FILE NAME = D160E60-shit-staging1.dgn
PLOT DATE = 12/30/2008



CHRISTIAN-ROGE & ASSOCIATES, INC.
ENGINEERS-PLANNERS-SURVEYORS
211 WEST WACKER DRIVE
CHICAGO, ILLINOIS 60606
PHONE: (312)372-2023 FAX: (312)372-5274

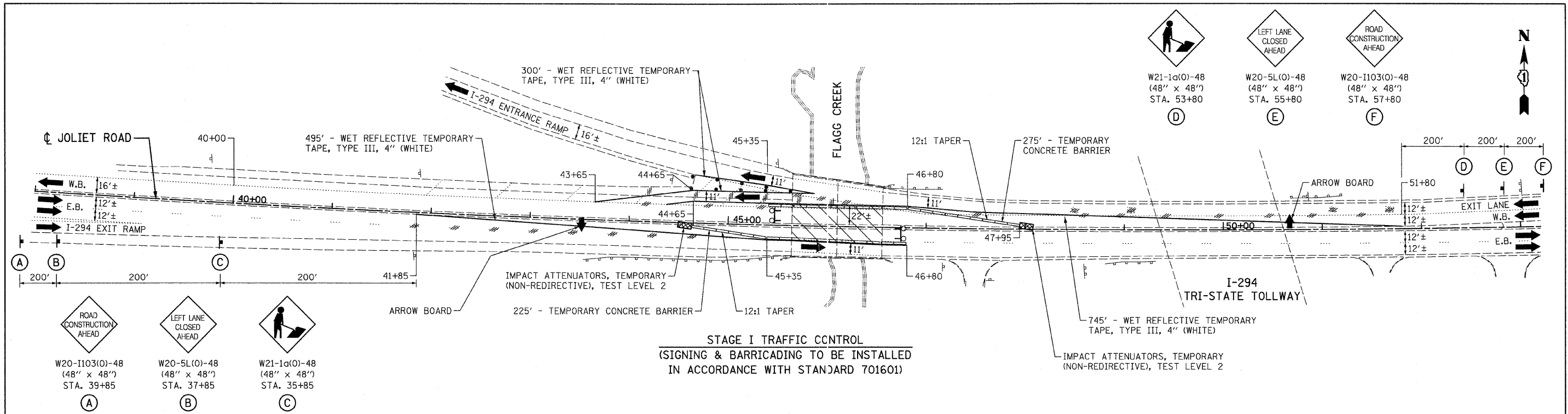
DESIGNED - S.J.P.	REVISED -
DRAWN - A.C.S.	REVISED -
CHECKED - E.J.M.	REVISED -
DATE - DECEMBER 30, 2008	REVISED -

**STATE OF ILLINOIS
DEPARTMENT OF TRANSPORTATION**

**SUGGESTED MAINTENANCE OF TRAFFIC NOTES AND DETAILS
JOLIET ROAD OVER FLAGG CREEK**

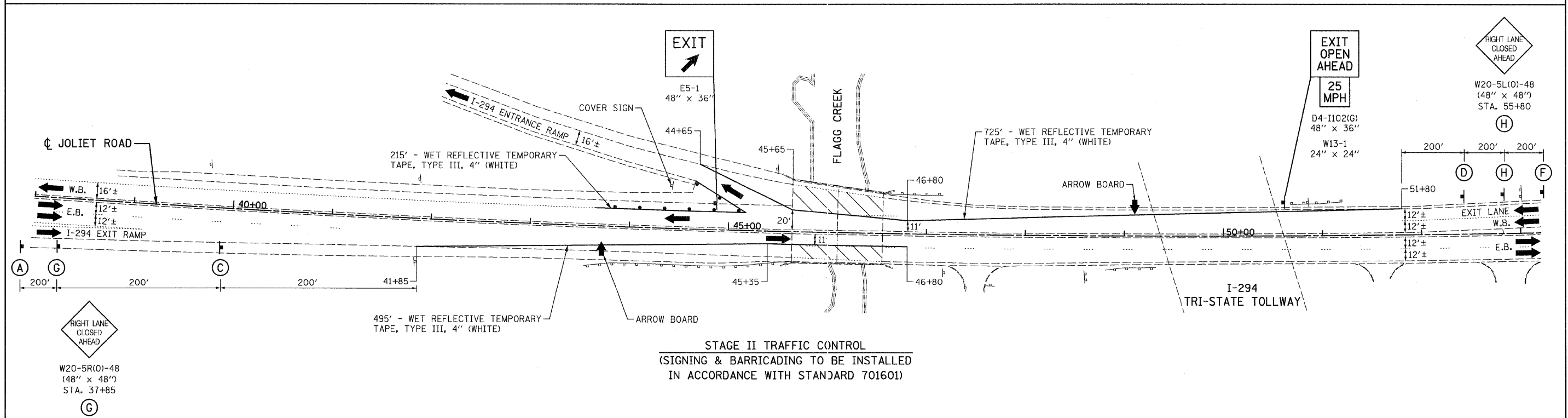
SCALE: NONE SHEET NO. 1 OF 2 SHEETS STA. 45+65 TO STA. 46+80

F.A.U. RTE.	SECTION	COUNTY	TOTAL SHEETS	SHEET NO.
3562	430 Y-1 BR	COOK	15	4
CONTRACT NO. 60E60				
FED. ROAD DIST. NO. 1 ILLINOIS FED. AID PROJECT				



TRAFFIC CONTROL AND STAGING LEGEND

- WORK ZONE
- DIRECTION OF TRAFFIC
- PAVEMENT MARKING REMOVAL
- TYPE III BARRICADES WITH FLASHING LIGHTS
- TEMPORARY CONCRETE BARRIER
- BARRICADE TYPE II OR DRUMS @ 25' C-C



FILE NAME = D168E68-sht-staging2.dwg
 PLOT DATE = 12/30/2008

CHRISTIAN-ROGE & ASSOCIATES, INC.
 ENGINEERS-PLANNERS-SURVEYORS
 211 WEST WACKER DRIVE
 CHICAGO, ILLINOIS 60606
 PHONE: (312)372-2023 FAX: (312)372-5274

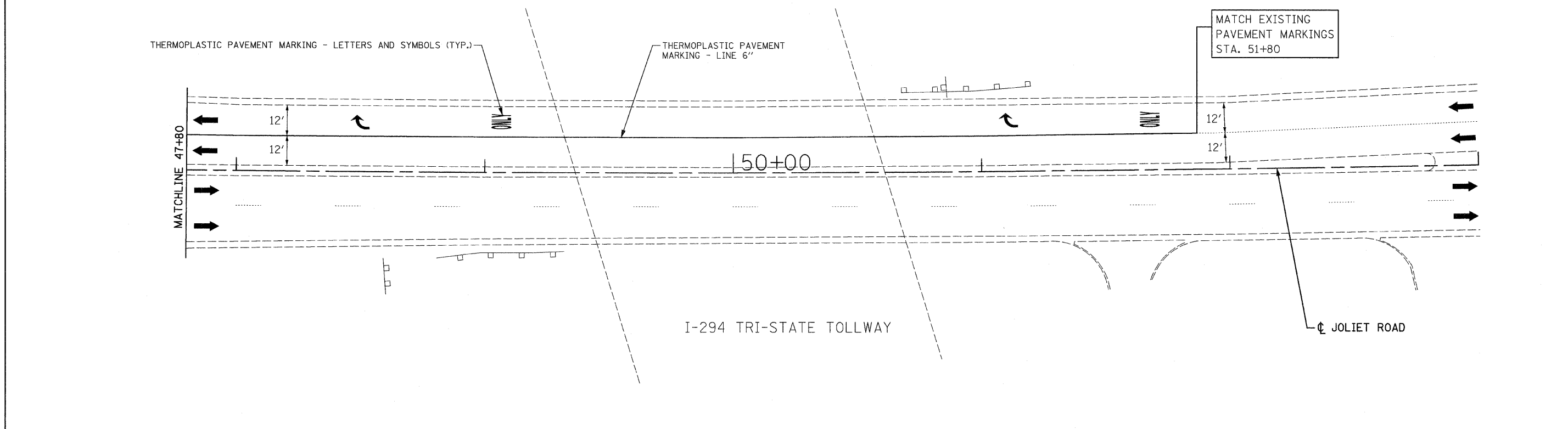
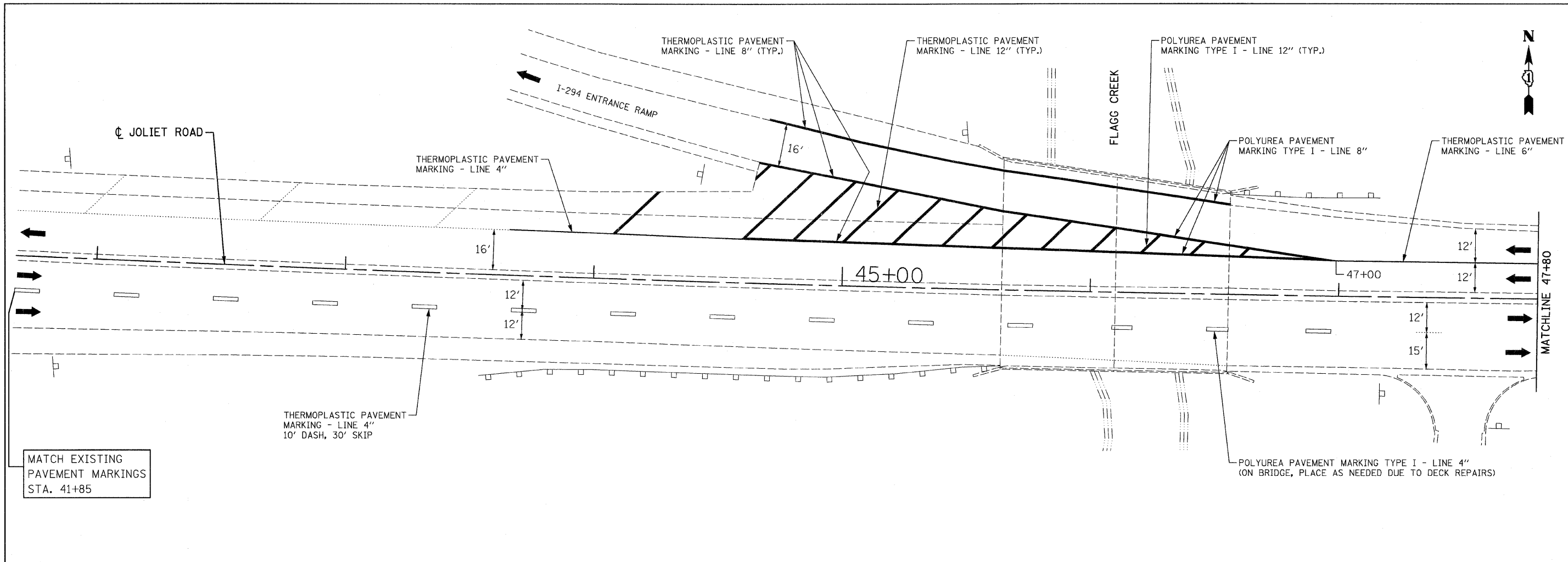
DESIGNED - S.J.P.
 DRAWN - A.C.S.
 CHECKED - E.J.M.
 DATE - DECEMBER 30, 2008


REVISED -
 REVISED -
 REVISED -
 REVISED -

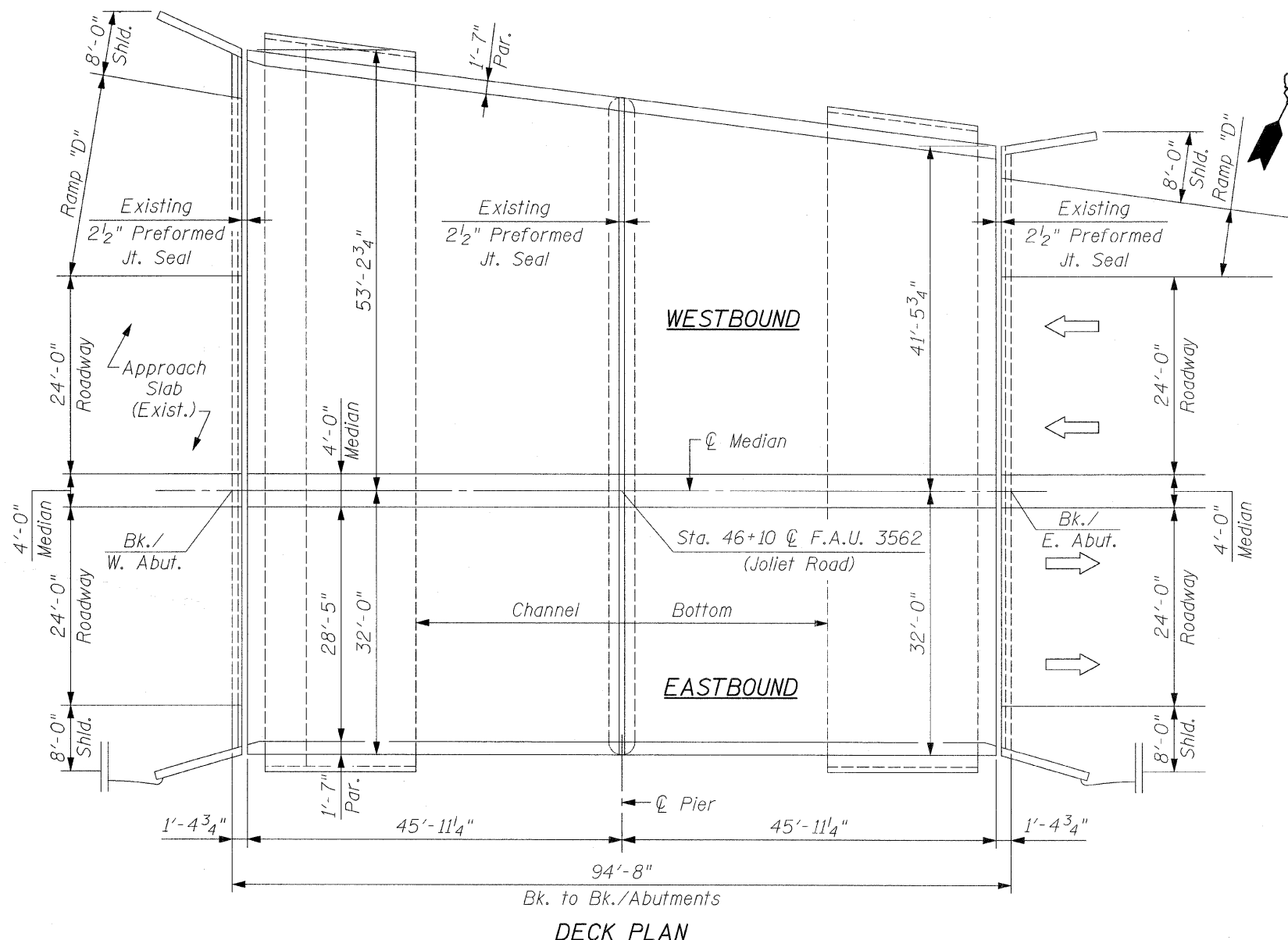
STATE OF ILLINOIS
DEPARTMENT OF TRANSPORTATION

SUGGESTED TRAFFIC CONTROL AND STAGING PLAN
JOLIET ROAD OVER FLAGG CREEK
 SCALE: 1" = 50'
 SHEET NO. 2 OF 2 SHEETS
 STA. 45+65 TO STA. 46+80

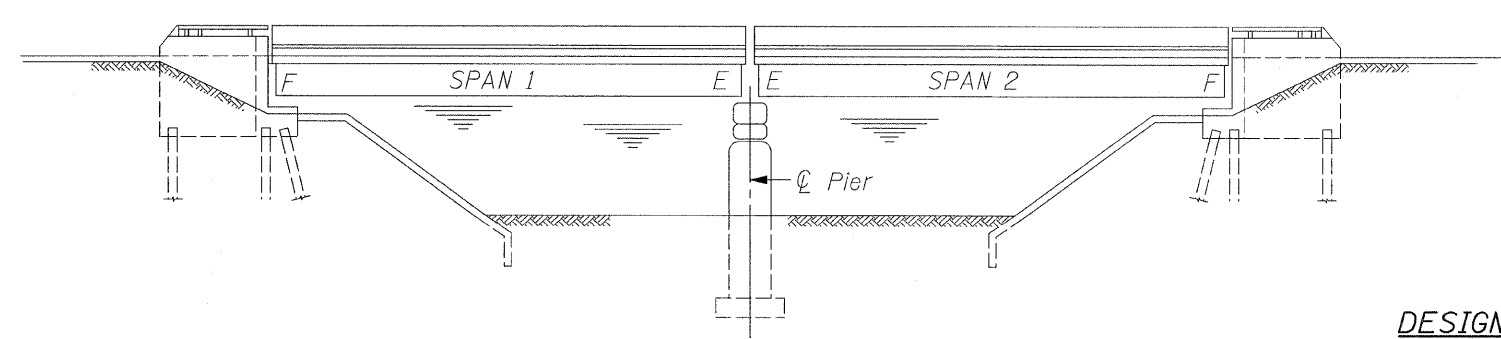
F.A.U. RTE.	SECTION	COUNTY	TOTAL SHEETS	SHEET NO.
3562	430 Y-1 BR	COOK	15	5
CONTRACT NO. 60E60				
FED. ROAD DIST. NO. 1 ILLINOIS FED. AID PROJECT				



FILE NAME = D160E60-shr-pm.dgn PLOT DATE = 12/30/2008	 CHRISTIAN-ROGE & ASSOCIATES, INC. ENGINEERS-PLANNERS-SURVEYORS 211 WEST WACKER DRIVE CHICAGO, ILLINOIS 60606 PHONE: (312)372-2023 FAX: (312)372-5274	DESIGNED - S.J.P.	REVISED -	STATE OF ILLINOIS DEPARTMENT OF TRANSPORTATION	PAVEMENT MARKING PLAN JOLIET ROAD OVER FLAGG CREEK		F.A.U. RTE. 3562	SECTION 430 Y-1 BR	COUNTY COOK	TOTAL SHEETS 15	SHEET NO. 6
		DRAWN - A.C.S.	REVISED -		SCALE: 1" = 20' SHEET NO. 1 OF 1 SHEETS STA. 45+65 TO STA. 46+80		CONTRACT NO. 60E60				
CHECKED - E.J.M.	REVISED -				FED. ROAD DIST. NO. 1 ILLINOIS FED. AID PROJECT						
DATE - DECEMBER 30, 2008	REVISED -										



DECK PLAN

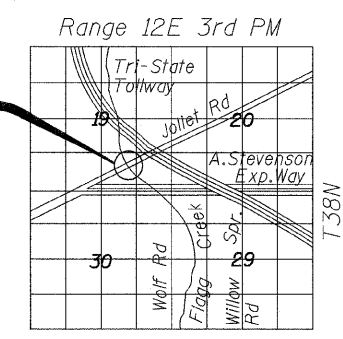


ELEVATION

**DESIGN STRESSES
FIELD UNITS**

$f'_c = 3,500 \text{ psi}$
 $f_y = 60,000 \text{ psi (Reinforcement)}$

**LOCATION OF
STRUCTURE**



LOCATION SKETCH

GENERAL NOTES:

Plan Dimensions and Details Relative to Existing Plans are Subject to Nominal Construction Variations. The Contractor Shall Field Verify Existing Dimensions and Details Affecting New Construction and Make Necessary Approved Adjustments Prior to Construction or Ordering of Materials. Such Variations Shall not be Cause for Additional Compensation for a Change in the Scope of Work, However, the Contractor will be Paid for the Quantity Actually Furnished at the Unit Price Bid for the Work.

Existing Reinforcement Bars Extending into the Removal Areas Shall be Cleaned, Straightened and Incorporated into the New Construction. Any Reinforcement Bars that are Damaged During Concrete Removal Shall be Replaced with an Approved Bar Splicer or Anchorage System.

Areas of Deck Repairs Shown are Estimated. The Engineer Shall Show Actual Locations of deck Repairs on As-Built Plans.

The Contractor Shall use Extreme Care During Concrete Removal so as not to Damage the Existing P.P.C. I-Beam. Any Damage Done to the P.P.C. I-Beam is to be Repaired at the Contractor's Expense.

Reinforcement Bars Shall Conform to the Requirements of A.S.T.M. A-706, Grade 60. See Special Provisions.

Reinforcement Bars Designated (E) Shall be Epoxy Coated.

TOTAL BILL OF MATERIAL

ITEM	UNIT	QUANTITY
Deck Slab Repair (Full Depth, Type II)	Sq. Yd.	36
Deck Slab Repair (Partial)	Sq. Yd.	61
Silicone Joint Sealer, 1 ³ / ₄ "	Foot	238
Reinforcement Bars, Epoxy Coated	Pound	4,830
Concrete Removal	Cu. Yd.	15.0
Concrete Superstructure	Cu. Yd.	15.2
Protective Coat	Sq. Yd.	41
Structural Repair of Concrete (Depth Equal to or Less Than 5 In.)	Sq. Ft.	60
Structural Repair of Concrete (Depth Greater Than 5 In.)	Sq. Ft.	24
Temporary Shoring and Cribbing	Each	1
Polymer Concrete	Cu. Ft.	1



BHADRESH N. SHAH
 LICENSED STRUCTURAL ENGINEER
 STATE OF ILLINOIS LIC. No. 081-004476
 EXPIRES: 11-30-10



CHRISTIAN-ROGE & ASSOCIATES, INC.
 ENGINEERS / PLANNERS / SURVEYORS
 211 W. WACKER DRIVE CHICAGO, IL 60606
 PHONE: (312)372-2023 FAX: (312)372-5274

FILE NAME = plan_elevation.dgn	USER NAME = 100T	DESIGNED - B.N.S./J.C.N.	REVISED -
	PLOT SCALE = 50.0000' / IN.	DRAWN - F.M.	REVISED -
	PLOT DATE = 12/30/2008	CHECKED - B.N.S./J.C.N.	REVISED -
		DATE - DECEMBER, 2008	REVISED -

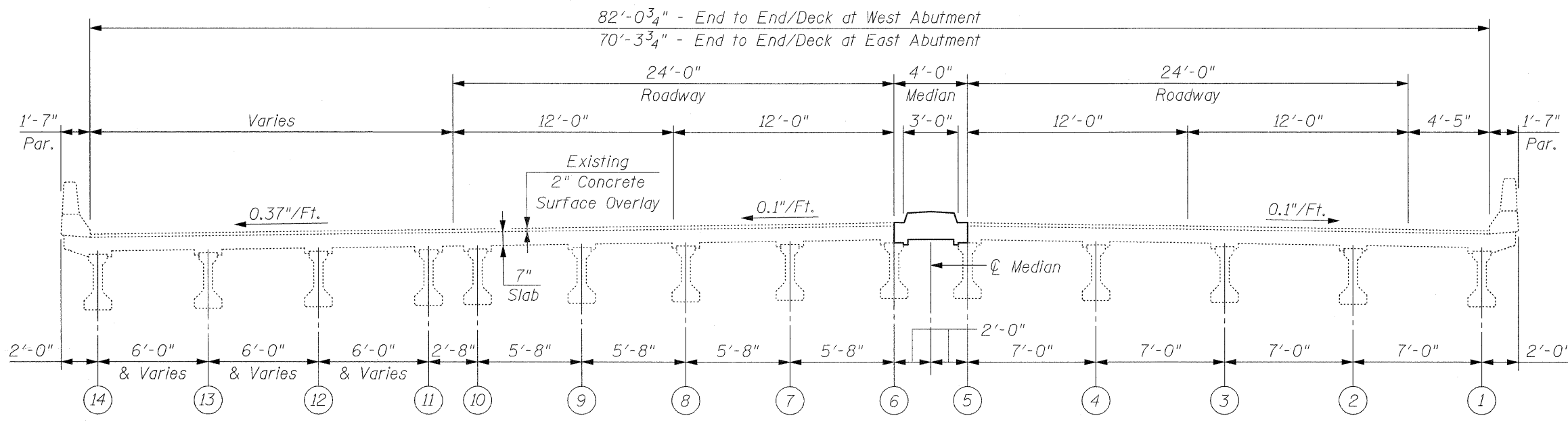
**STATE OF ILLINOIS
DEPARTMENT OF TRANSPORTATION**

**GENERAL PLAN & ELEVATION
JOLIET ROAD OVER FLAGG CREEK**

S.N. 016-0393

SCALE: SHEET NO. S1 OF S5 SHEETS STA. TO STA.

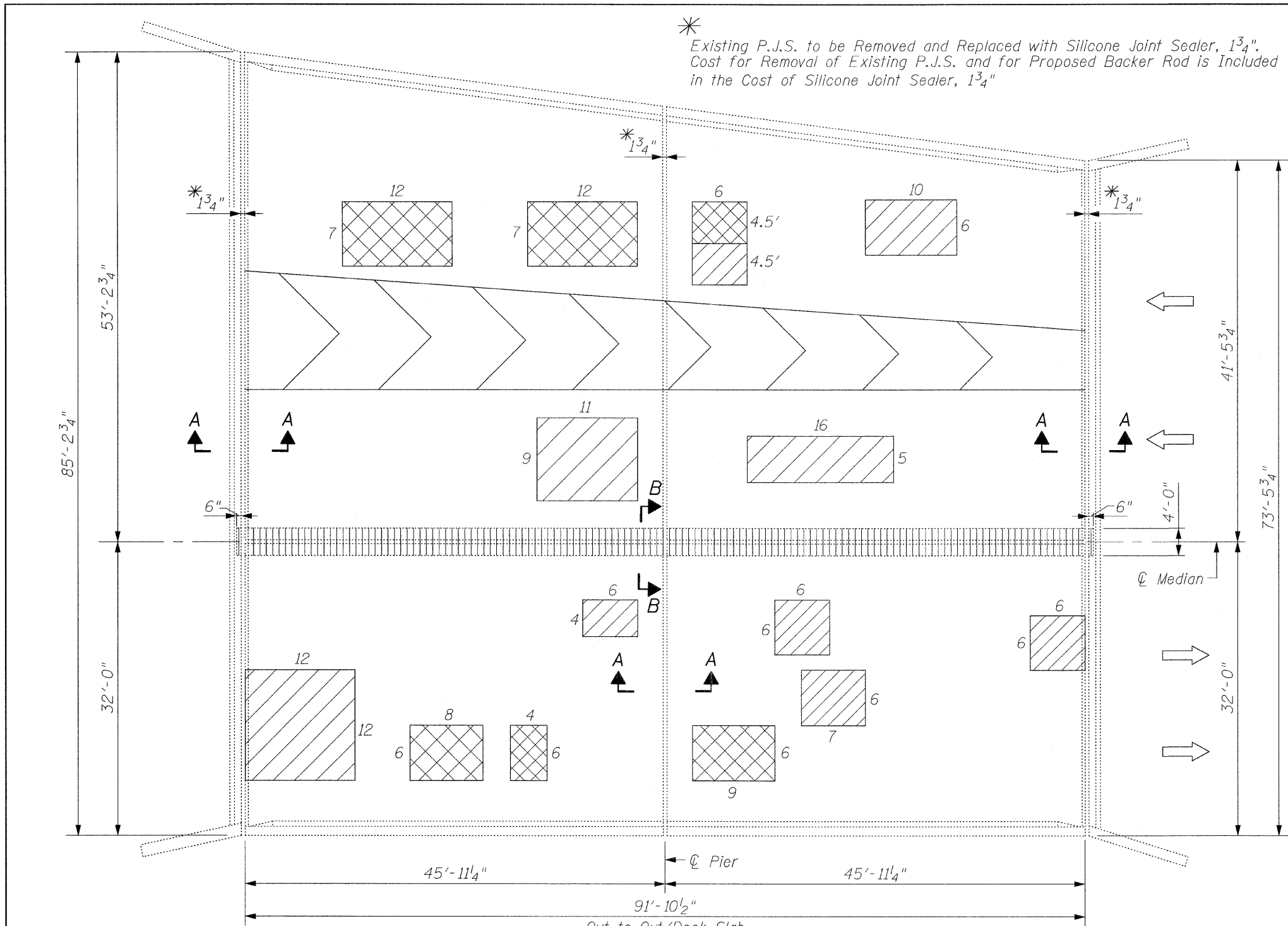
F.A.U. RTE. 3562	SECTION 430 Y-1 BR	COUNTY COOK	TOTAL SHEETS 15	SHEET NO. 7
FED. ROAD DIST. NO. ILLINOIS FED. AID PROJECT			CONTRACT NO. 60E60	



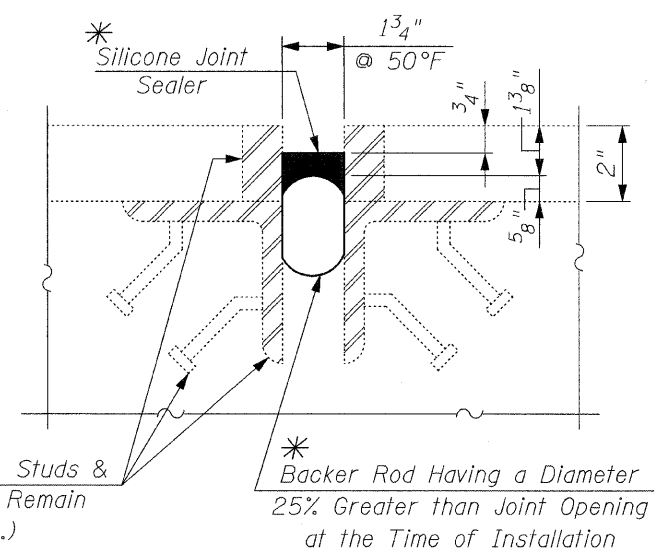
DECK CROSS SECTION
 (Looking East)

CR & A
 CHRISTIAN-ROGE & ASSOCIATES, INC.
 ENGINEERS / PLANNERS / SURVEYORS
 211 W. WACKER DRIVE CHICAGO, IL. 60606
 PHONE: (312)372-2023 FAX: (312)372-5274

FILE NAME = x-section.dgn	USER NAME = IDOT	DESIGNED - B.N.S./J.C.N.	REVISED -	STATE OF ILLINOIS DEPARTMENT OF TRANSPORTATION	EXISTING DECK CROSS SECTION JOLIET ROAD OVER FLAGG CREEK			F.A.I.J. RTE. 3562	SECTION 430 Y-1 BR	COUNTY COOK	TOTAL SHEETS 15	SHEET NO. 8
	PLOT SCALE = 50,0000' / IN.	DRAWN - F.M.	REVISED -		S.N. 016-0393			CONTRACT NO. 60E60				
	PLOT DATE = 12/30/2008	CHECKED - B.N.S./J.C.N.	REVISED -		SCALE:	SHEET NO. S2 OF S5 SHEETS	STA. TO STA.	FED. ROAD DIST. NO.	ILLINOIS FED. AID PROJECT			



* Existing P.J.S. to be Removed and Replaced with Silicone Joint Sealer, 1 3/4". Cost for Removal of Existing P.J.S. and for Proposed Backer Rod is Included in the Cost of Silicone Joint Sealer, 1 3/4"



Exist. Bars, Studs & Angles to Remain (Typ.)

* Backer Rod Having a Diameter 25% Greater than Joint Opening at the Time of Installation

SECTION A-A

NOTES:
 For Median & Longitudinal Joint Removal & Reconstructing Median, See Sht. S4.
 Locations & Areas of Repairs are Based on Inspections Performed by I.D.O.T. Maintenance Engineers in September, 2008.
 All Patch Dimensions are in Feet.

BILL OF MATERIAL

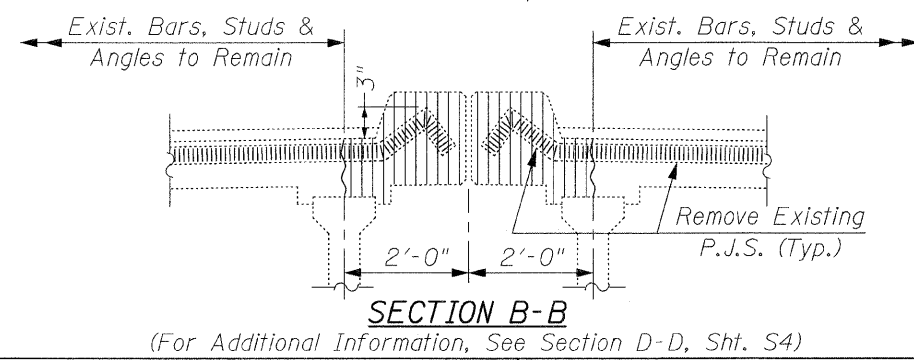
ITEM	UNIT	QUANTITY
Deck Slab Repair (Full Depth, Type II)	Sq. Yd.	36
Deck Slab Repair (Partial)	Sq. Yd.	61
Silicone Joint Sealer, 1 3/4"	Foot	238

LEGEND:

- Deck Slab Repair (Full Depth, Type II)
- Deck Slab Repair (Partial)
- Median & Longitudinal Joint Removal & Reconstructing Median

NOTE:
 INSPECTION WAS CONDUCTED IN AUGUST, 2008 BY I.D.O.T. FIELD MAINTENANCE ENGINEERS.

NOTE:
 SURFACE TYPE: CONCRETE WITH CONCRETE OVERLAY



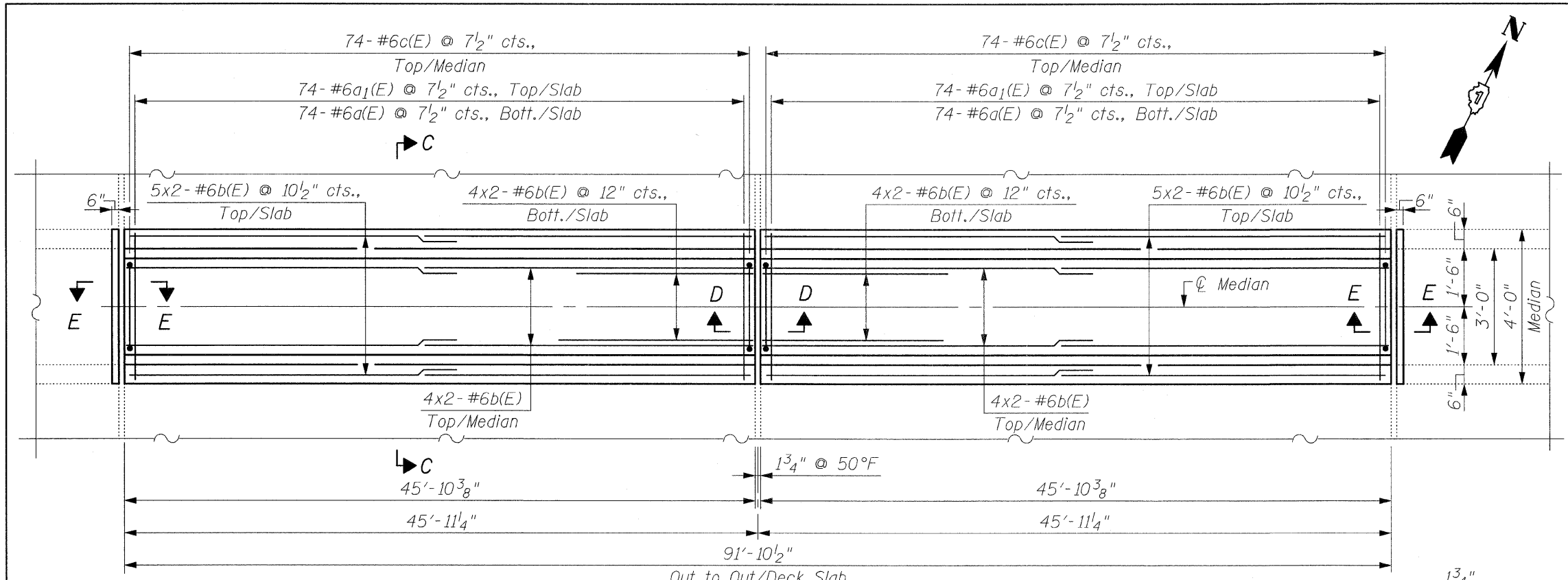
SECTION B-B
 (For Additional Information, See Section D-D, Sht. S4)

FILE NAME = deck_patching.dgn	USER NAME = IDOT	DESIGNED - B.N.S./J.C.N.	REVISED -
		DRAWN - F.M.	REVISED -
		CHECKED - B.N.S./J.C.N.	REVISED -
		DATE - DECEMBER, 2008	REVISED -

STATE OF ILLINOIS
DEPARTMENT OF TRANSPORTATION

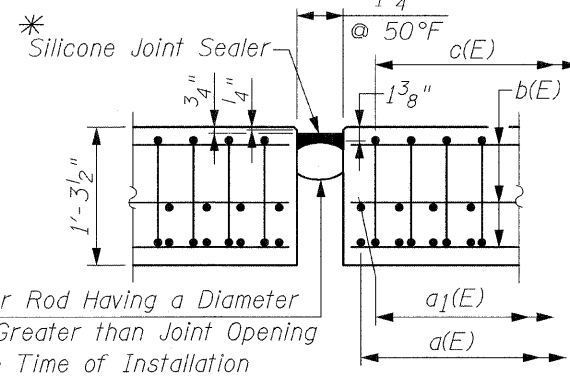
BRIDGE DECK PATCHING
JOLIET ROAD OVER FLAGG CREEK
 S.N. 016-0393

F.A.I. RTE.	SECTION	COUNTY	TOTAL SHEETS	SHEET NO.
3562	430 Y-1 BR	COOK	15	9
FED. ROAD DIST. NO.			ILLINOIS FED. AID PROJECT	
			CONTRACT NO. 60E60	

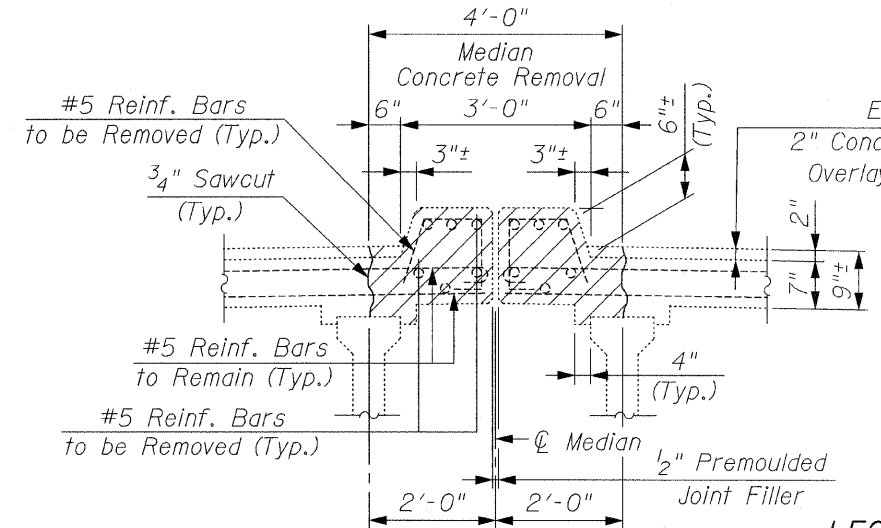
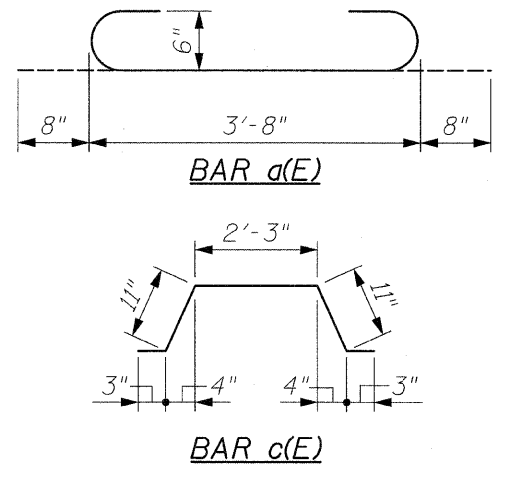


**PROPOSED PLAN
LONGITUDINAL JOINT CLOSURE**

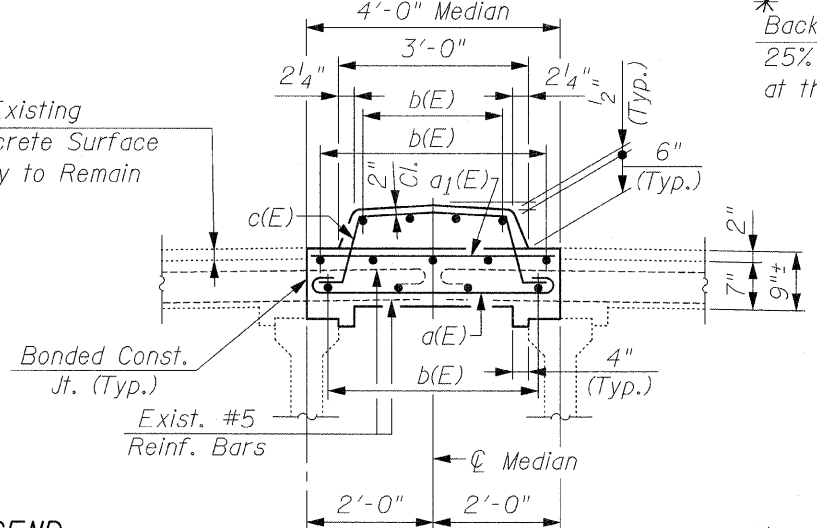
MIN. BAR LAP:
#6 Bar = 2'-7"



**SECTION D-D
(at Pier)**

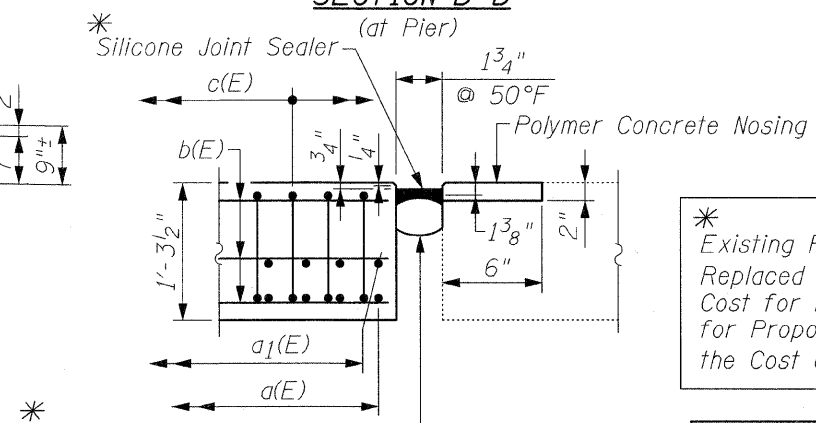


**EXISTING
SECTION C-C
MEDIAN & LONGITUDINAL JOINT**



**PROPOSED
SECTION C-C
MEDIAN**

LEGEND:
Concrete Removal



**SECTION E-E
(at Abutment)**

* Existing P.J.S. to be Removed and Replaced with Silicone Joint Sealer, 1 3/4". Cost for Removal of Existing P.J.S. and for Proposed Backer Rod is Included in the Cost of Silicone Joint Sealer, 1 3/4"

CR & A CHRISTIAN-ROGE & ASSOCIATES, INC.
ENGINEERS / PLANNERS / SURVEYORS
211 W. WACKER DRIVE CHICAGO, IL 60606
PHONE: (312)372-2023 FAX: (312)372-5274

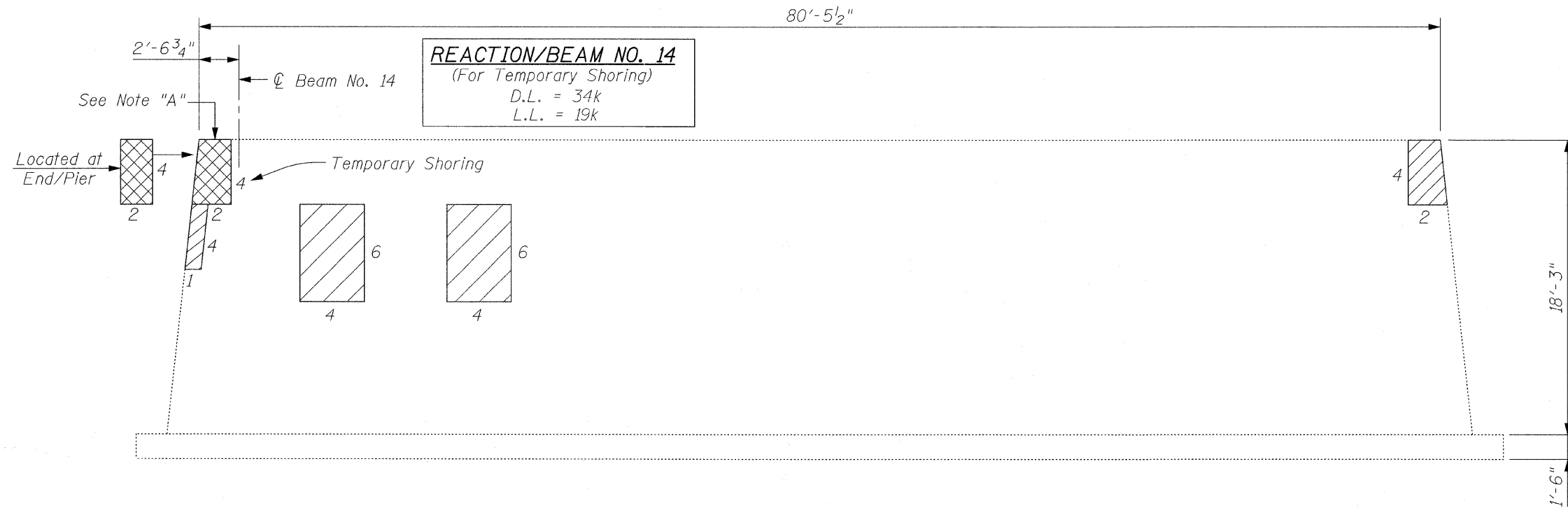
BILL OF MATERIAL

Bar	No.	Size	Length	Shape
a(E)	148	#6	5'-0"	
a1(E)	148	#6	3'-8"	
b(E)	52	#6	24'-1"	
c(E)	148	#6	4'-7"	
Reinforcement Bars, Epoxy Coated		Pound	4,830	
Concrete Removal		Cu. Yd.	15.0	
Concrete Superstructure		Cu. Yd.	15.2	
Protective Coat		Sq. Yd.	41	
Polymer Concrete		Cu. Ft.	1	

Bars Indicated Thus 4x2-#6 etc., Indicates 4 Lines of Bars With 2 Lengths per Line.

NOTE "A"

Make 4'x2' Repair on East & West Face of Pier. Beam No. 14 Must be Temporarily Supported on Both Sides of the Pier During Structural Repairs. Cost is Included With Temporary Shoring and Cribbing.



REACTION/BEAM NO. 14
(For Temporary Shoring)
D.L. = 34k
L.L. = 19k

PIER ELEVATION
(Looking East)

NOTES:

Locations & Areas of Repairs are Based on Inspections Performed by I.D.O.T. Maintenance Engineers in September, 2008.

All Patch Dimensions are in Feet.

BILL OF MATERIAL

ITEM	UNIT	QUANTITY
Structural Repair of Concrete (Depth Equal to or Less Than 5 In.)	Sq. Ft.	60
Structural Repair of Concrete (Depth Greater Than 5 In.)	Sq. Ft.	24
Temporary Shoring and Cribbing	Each	1

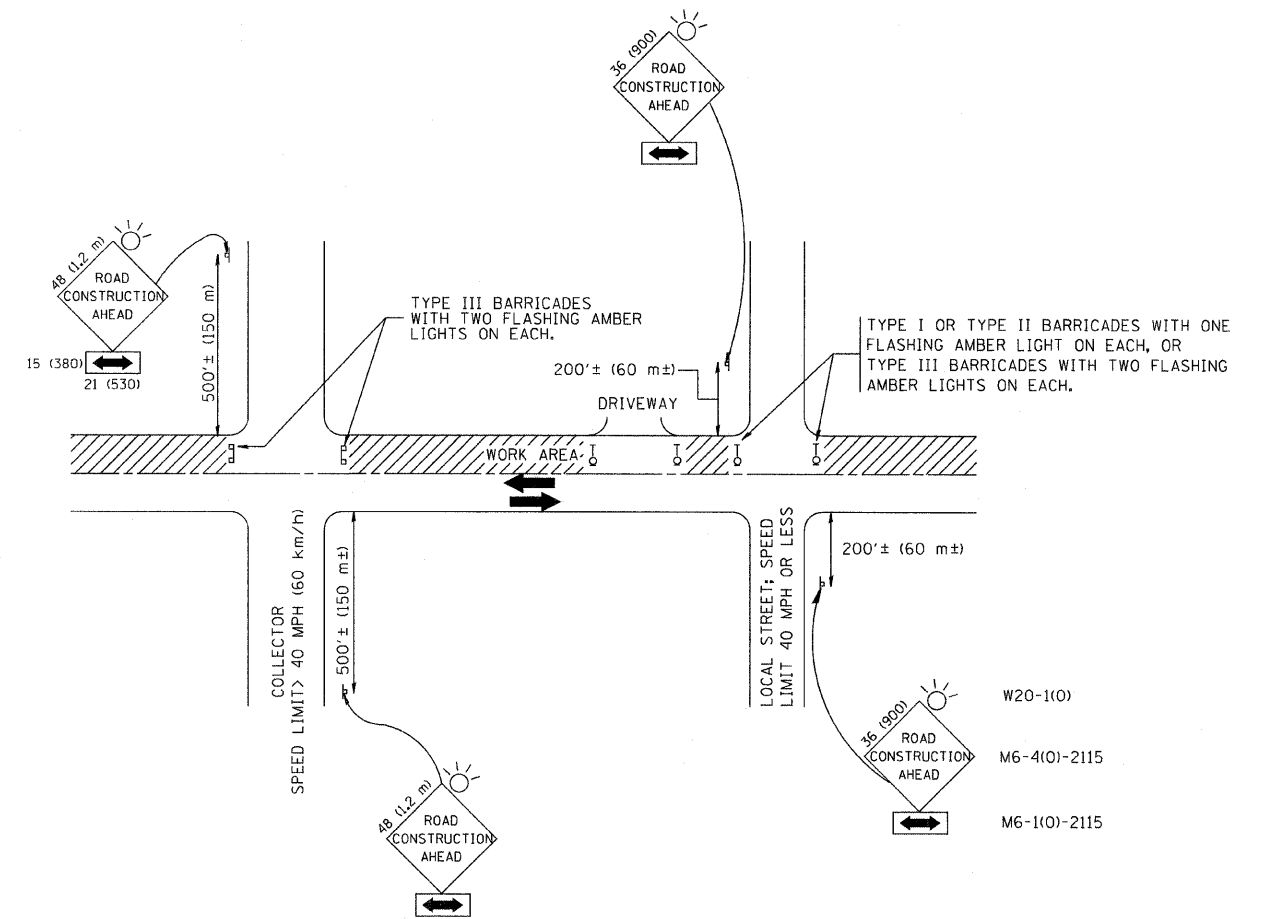
LEGEND:

- Structural Repair of Concrete (Depth Equal to or Less Than 5 In.)
- Structural Repair of Concrete (Depth Greater Than 5 In.)



CHRISTIAN-ROEG & ASSOCIATES, INC.
ENGINEERS / PLANNERS / SURVEYORS
211 W. WACKER DRIVE CHICAGO, IL 60606
PHONE: (312)372-2023 FAX: (312)372-5274

FILE NAME = pier_repair.dgn	USER NAME = IDDT	DESIGNED - B.N.S./J.C.N.	REVISED -	STATE OF ILLINOIS DEPARTMENT OF TRANSPORTATION	PIER REPAIR JOLIET ROAD OVER FLAGG CREEK S.N. 016-0393	F.A.J. RTE. 3562	SECTION 430 Y-1 BR	COUNTY COOK	TOTAL SHEETS 15	SHEET NO. 11		
	PLOT SCALE = 50.0000' / IN.	CHECKED - B.N.S./J.C.N.	REVISED -			SCALE:	SHEET NO. S5 OF S5 SHEETS	STA.	TO STA.	CONTRACT NO. 60E60		
	PLOT DATE = 12/30/2008	DATE - DECEMBER, 2008	REVISED -			FED. ROAD DIST. NO. [ILLINOIS] FED. AID PROJECT						



TRAFFIC CONTROL AND PROTECTION FOR SIDE ROADS, INTERSECTIONS, AND DRIVEWAYS

NOTES:

- A. FOR NO LANE RESTRICTION ON THE SIDE ROAD OR DRIVEWAYS
- SIDE ROAD WITH A SPEED LIMIT OF 40 MPH (60 km/h) OR LESS AS SHOWN ON THE DRAWING AND AS DIRECTED BY THE ENGINEER:
 - ONE **ROAD CONSTRUCTION AHEAD** SIGN 36 x 36 (900x900) WITH A FLASHER AND FLAG MOUNTED ON IT APPROXIMATELY 200' (60 m) IN ADVANCE OF THE MAIN ROUTE.
 - THE CLOSED PORTION OF THE MAIN ROUTE SHALL BE PROTECTED BY BLOCKING WITH TYPE I, TYPE II OR TYPE III BARRICADES, 1/3 OF THE CROSS SECTION OF THE CLOSED PORTION.
 - SIDE ROAD WITH A SPEED LIMIT GREATER THAN 40 MPH (60 km/h) AS SHOWN ON THE DRAWING AND AS DIRECTED BY THE ENGINEER:
 - ONE **ROAD CONSTRUCTION AHEAD** SIGN 48 x 48 (1.2 m x 1.2 m) WITH A FLASHER MOUNTED ON IT APPROXIMATELY 500' (150 m) IN ADVANCE OF THE MAIN ROUTE.
 - THE CLOSED PORTION OF THE MAIN ROUTE SHALL BE PROTECTED BY BLOCKING WITH TYPE III BARRICADES, 1/2 OF THE CROSS SECTION OF THE CLOSED PORTION.
3. WHEN THE SIDE ROAD LIES BETWEEN THE BEGINNING OF THE MAINLINE SIGNING AND THE WORK ZONE, A SINGLE HEADED ARROW (M6-1) SHALL BE USED IN LIEU OF THE DOUBLE HEADED ARROW (M6-4).
- B. FOR A LANE CLOSURE ON A SIDE ROAD OR DRIVEWAY:
- USE APPLICABLE PORTIONS OF THE TYPICAL APPLICATION OF TRAFFIC CONTROL DEVICES (STD. 701501, STD. 701606 OR THE APPROPRIATE STANDARD). THE SPACING OF SIGNS AND BARRICADES SHALL BE ADJUSTED FOR FIELD CONDITIONS AS DIRECTED BY THE ENGINEER. THE DIRECTIONAL ARROW SHALL BE COVERED OR REMOVED WHEN NO LONGER CONSISTENT WITH THE SIDE ROAD LANE CLOSURE.
- C. ADVANCE WARNING SIGNS ARE TO BE OMITTED ON DRIVEWAY UNLESS OTHERWISE NOTED.
- D. THE TRAFFIC CONTROL AND PROTECTION FOR SIDE ROADS, INTERSECTIONS, AND DRIVEWAYS SHALL BE INCIDENTAL TO THE COST OF SPECIFIED TRAFFIC CONTROL STANDARDS OR ITEMS.

All dimensions are in millimeters (inches) unless otherwise shown.

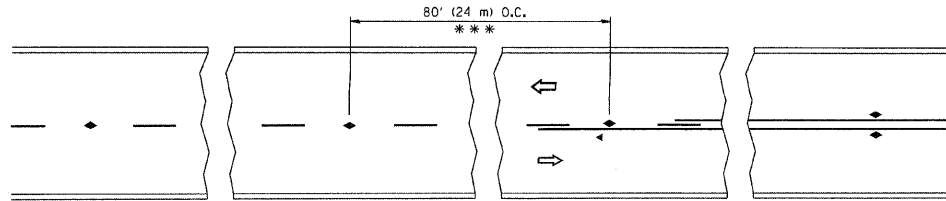
FILE NAME = W:\dststd\22x34\tdl0.dgn	USER NAME = geglienobt	DESIGNED - LHA	REVISED - J. OBERLE 10-18-95
		DRAWN -	REVISED - A. HOUSEH 03-06-96
	PLOT SCALE = 50.000' / IN.	CHECKED -	REVISED - A. HOUSEH 10-15-96
	PLOT DATE = 1/4/2008	DATE - 06-89	REVISED - T. RAMMACHER 01-06-00

STATE OF ILLINOIS
DEPARTMENT OF TRANSPORTATION

TRAFFIC CONTROL AND PROTECTION FOR
SIDE ROADS, INTERSECTIONS, AND DRIVEWAYS

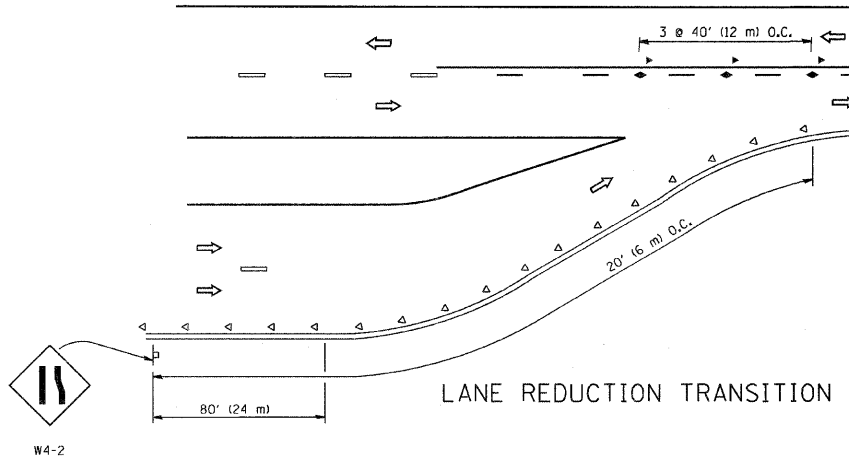
SCALE: NONE SHEET NO. 1 OF 1 SHEETS STA. 46+65 TO STA. 46+80

F.A.U. FILE 3562	SECTION 430 Y-1 BR	COUNTY COOK	TOTAL SHEETS 15	SHEET NO. 12
TC-10			CONTRACT NO. 60E60	
FED. ROAD DIST. NO. 1 ILLINOIS FED. AID PROJECT				

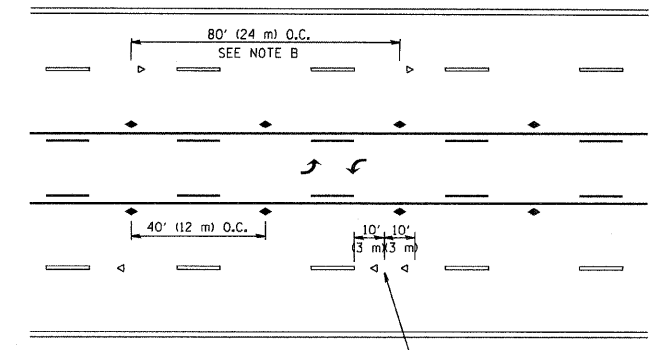


*** REDUCE TO 40' (12 m) O.C. ON CURVES WITH POSTED OR ADVISORY SPEED 45 M.P.H. (70 km/h) OR LESS.

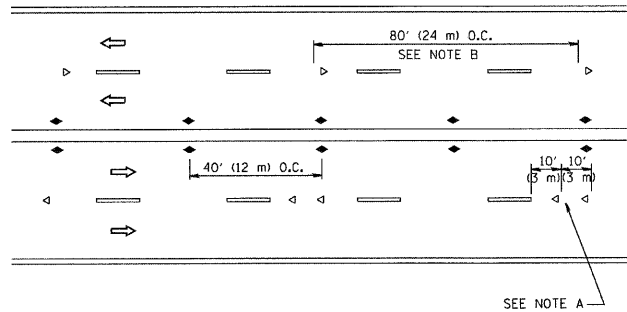
TWO-LANE/TWO-WAY



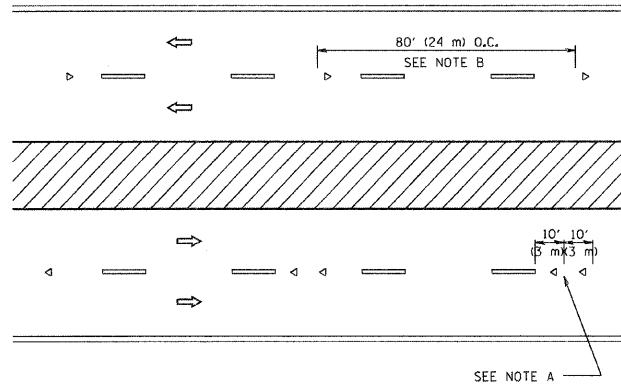
LANE REDUCTION TRANSITION



TWO-WAY LEFT TURN



MULTI-LANE/UNDIVIDED



MULTI-LANE/DIVIDED

GENERAL NOTES

1. MARKERS USED WITH DASHED LINES SHALL BE CENTERED IN THE GAP BETWEEN SEGMENTS.
2. MARKERS USED ADJACENT TO SOLID LINES SHALL BE OFFSET 2 TO 3 (50 TO 75) TOWARD TRAFFIC AS SHOWN.
3. MARKERS THROUGH TANGENTS LESS THAN 500' (150 m) IN LENGTH BETWEEN CURVES SHALL BE INSTALLED AT THE LESSER OF THE TWO CURVE SPACINGS.

SYMBOLS

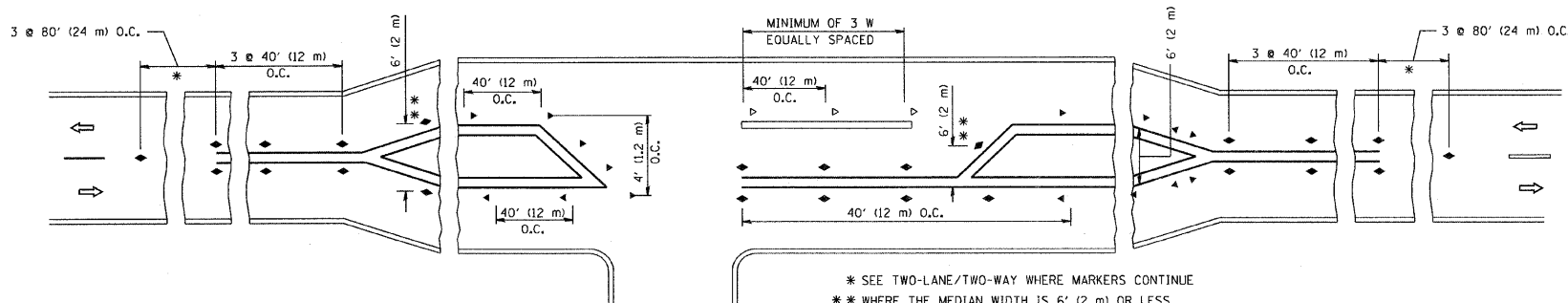
- YELLOW STRIPE
- WHITE STRIPE
- ◀ ONE-WAY AMBER MARKER
- ◁ ONE-WAY CRYSTAL MARKER (W/O)
- ◆ TWO-WAY AMBER MARKER

LANE MARKER NOTES

- A. USE DOUBLE LANE LINE MARKERS SPACED AS SHOWN.
- B. REDUCE TO 40' (12 m) O.C. ON CURVES WHERE ADVISORY SPEEDS ARE 10 M.P.H. (20 km/h) LOWER THAN POSTED SPEEDS.

DESIGN NOTES

1. DOUBLE LANE LINE MARKERS SHALL BE USED UNLESS SPECIFIED OTHERWISE.
2. EXCEPT AS SHOWN ON THE LANE REDUCTION TRANSITION AND FREEWAY EXIT RAMP DETAIL, MARKERS ARE NOT TO BE SPECIFIED ON RIGHT EDGE LINES.
3. THE EXACT MARKER LIMITS, SPACING, AND COLOR SHOULD BE INCLUDED IN THE PLANS.
4. MARKERS SHOULD NOT BE USED ALONGSIDE CURBS EXCEPT FOR EXTREMELY SHORT SECTIONS OF CURBS WHERE NOT MORE THAN TWO MARKERS WOULD BE INVOLVED.

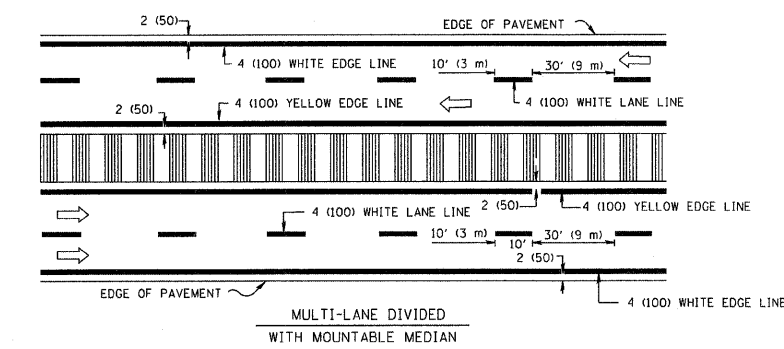
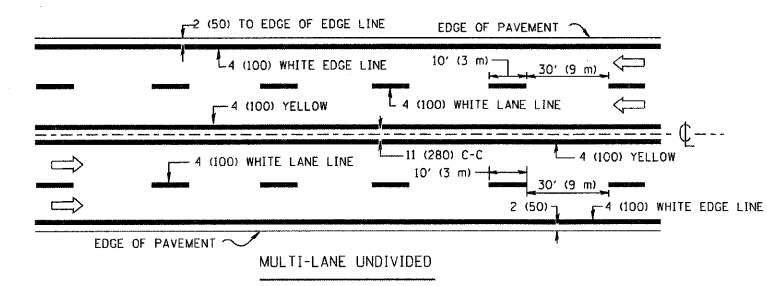
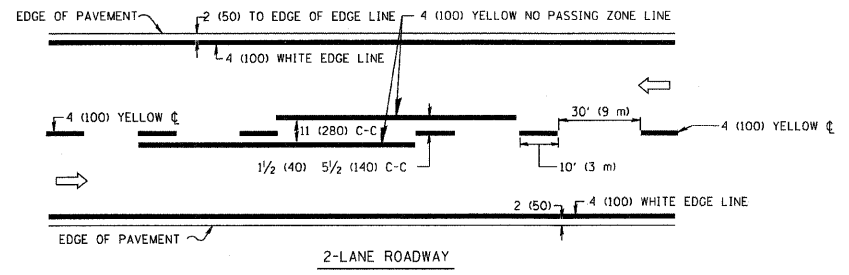


LEFT TURN

* SEE TWO-LANE/TWO-WAY WHERE MARKERS CONTINUE
 ** WHERE THE MEDIAN WIDTH IS 6' (2 m) OR LESS USE TWO-WAY MARKERS.

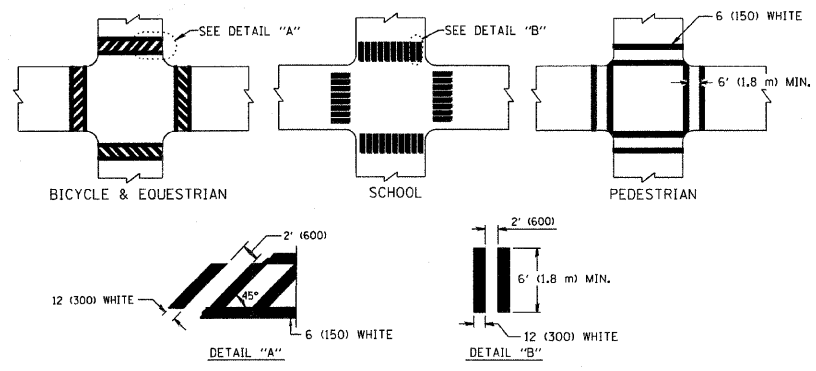
All dimensions are in inches (millimeters) unless otherwise shown.

FILE NAME = W:\diststd\22x34\tall.dgn	USER NAME = gogliobt	DESIGNED -	REVISED - T. RAMMACHER 09-19-94	STATE OF ILLINOIS DEPARTMENT OF TRANSPORTATION	TYPICAL APPLICATIONS			FAU. PTE.	SECTION	COUNTY	TOTAL SHEETS	SHEET NO.
	PLOT SCALE = 50,000' / IN.	DRAWN -	REVISED - T. RAMMACHER 03-12-99		RAISED REFLECTIVE PAVEMENT MARKERS (SNOW-PLOW RESISTANT)			3562	430 Y-1 BR	COOK	15	13
	PLOT DATE = 1/4/2008	CHECKED -	REVISED - T. RAMMACHER 01-06-00		SCALE: NONE SHEET NO. 1 OF 1 SHEETS STA. 46+65 TO STA. 46+80			TC-11		CONTRACT NO. 60E60		
		DATE -	REVISED -					FED. ROAD DIST. NO. 1 ILLINOIS FED. AID PROJECT				

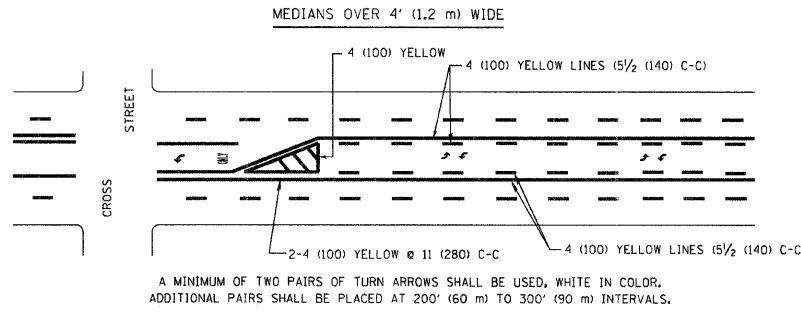
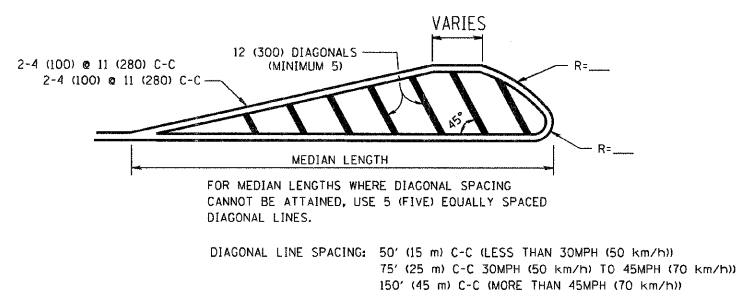
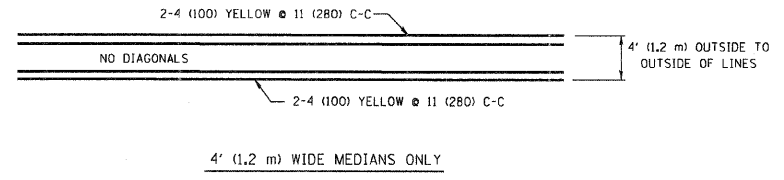


NOTE: MEDIANS WITH BARRIER CURB DO NOT REQUIRE AN EDGE LINE

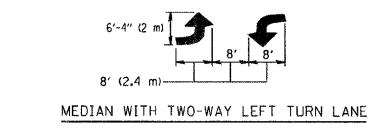
TYPICAL LANE AND EDGE LINE MARKING



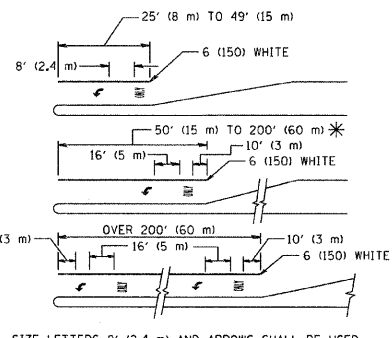
TYPICAL CROSSWALK MARKING



TYPICAL PAINTED MEDIAN MARKING

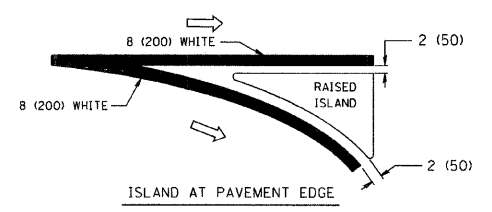
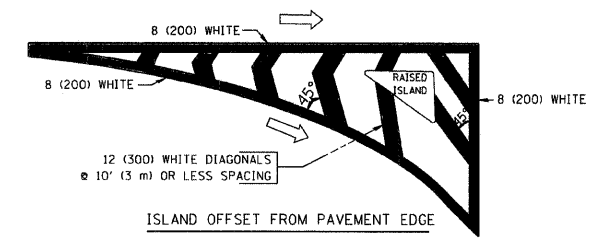


TYPICAL LEFT (OR RIGHT) TURN LANE MARKING



* TURN LANES IN EXCESS OF 400' (120 m) IN LENGTH MAY HAVE AN ADDITIONAL SET OF ARROW - "ONLY" INSTALLED MIDWAY BETWEEN THE OTHER TWO SETS OF ARROW - "ONLY".

TYPICAL TURN LANE MARKING



TYPICAL ISLAND MARKING

TYPE OF MARKING	WIDTH OF LINE	PATTERN	COLOR	SPACING / REMARKS
CENTERLINE ON 2 LANE PAVEMENT	4 (100)	SKIP-DASH	YELLOW	10' (3 m) LINE WITH 30' (9 m) SPACE
CENTERLINE ON MULTI-LANE UNDIVIDED PAVEMENT	2 @ 4 (100)	SOLID	YELLOW	11 (280) C-C
NO PASSING ZONE LINES: FOR ONE DIRECTION	4 (100)	SOLID	YELLOW	5 1/2 (140) C-C FROM SKIP-DASH CENTERLINE
NO PASSING ZONE LINES: FOR BOTH DIRECTIONS	2 @ 4 (100)	SOLID	YELLOW	11 (280) C-C OMIT SKIP-DASH CENTERLINE BETWEEN
LANE LINES	4 (100)	SKIP-DASH	WHITE	10' (3 m) LINE WITH 30' (9 m) SPACE
LANE LINES (EXTENSIONS OF CENTER, LANE OR TURN LANE MARKINGS)	5 (125)	SKIP-DASH	WHITE	
DOTTED LINES	SAME AS LINE BEING EXTENDED	SKIP-DASH	SAME AS LINE BEING EXTENDED	2' (600) LINE WITH 6' (1.8 m) SPACE
EDGE LINES	4 (100)	SOLID	YELLOW-LEFT WHITE-RIGHT	OUTLINE MOUNTABLE MEDIANS IN YELLOW; EDGE LINES ARE NOT USED NEXT TO BARRIER CURB
TURN LANE MARKINGS	6 (150) LINE; FULL SIZE LETTERS & SYMBOLS (8' (2.4m))	SOLID	WHITE	SEE TYPICAL TURN LANE MARKING DETAIL
TWO WAY LEFT TURN MARKING	2 @ 4 (100) EACH DIRECTION	SKIP-DASH AND SOLID	YELLOW	10' (3 m) LINE WITH 30' (9 m) SPACE FOR SKIP-DASH; 5 1/2 (140) C-C BETWEEN SOLID LINE AND SKIP-DASH LINE
TWO WAY LEFT TURN MARKING	8' (2.4m) LEFT ARROW	IN PAIRS	WHITE	SEE TYPICAL TWO-WAY LEFT TURN MARKING DETAIL
CROSSWALK LINES (PEDESTRIAN)	2 @ 6 (150)	SOLID	WHITE	NOT LESS THAN 6' (1.8 m) APART
A. DIAGONALS (BIKE & EQUESTRIAN)	12 (300) @ 45°	SOLID	WHITE	2' (600) APART
B. LONGITUDINAL BARS (SCHOOL)	12 (300) @ 90°	SOLID	WHITE	2' (600) APART
STOP LINES	24 (600)	SOLID	WHITE	PLACE 4' (1.2 m) IN ADVANCE OF AND PARALLEL TO CROSSWALK, IF PRESENT. OTHERWISE, PLACE AT DESIRED STOPPING POINT, PARALLEL TO CROSSROAD CENTERLINE, WHERE POSSIBLE
PAINTED MEDIANS	2 @ 4 (100) WITH 12 (300) DIAGONALS @ 45°	SOLID	YELLOW; TWO WAY TRAFFIC WHITE; ONE WAY TRAFFIC	11 (280) C-C FOR THE DOUBLE LINE SEE TYPICAL PAINTED MEDIAN MARKING.
GORE MARKING AND CHANNELIZING LINES	8 (200) WITH 12 (300) DIAGONALS @ 45°	SOLID	WHITE	DIAGONALS: 15' (4.5 m) C-C (LESS THAN 30MPH (50 km/h)) 20' (6 m) C-C (30MPH (50 km/h) TO 45MPH (70 km/h)) 30' (9 m) C-C (OVER 45MPH (70 km/h))
RAILROAD CROSSING	24 (600) TRANSVERSE LINES; "RR" IS 6' (1.8 m) LINE FOR "X"	SOLID	WHITE	SEE STATE STANDARD 78000! AREA OF "RR"=3.6 SQ. FT. (0.33 m²) EACH "X"=54.0 SQ. FT. (5.0 m²)
SHOULDER DIAGONALS	12 (300) @ 45°	SOLID	WHITE - RIGHT YELLOW - LEFT	50' (15 m) C-C (LESS THAN 30MPH (50 km/h)) 75' (25 m) C-C (30 MPH (50 km/h) TO 45MPH (70 km/h)) 150' (45 m) C-C (OVER 45MPH (70 km/h))

FOR FURTHER DETAILS ON PAVEMENT MARKING REFER TO STANDARD SPECIFICATIONS FOR ROAD AND BRIDGE CONSTRUCTION AND STATE STANDARD 78000.

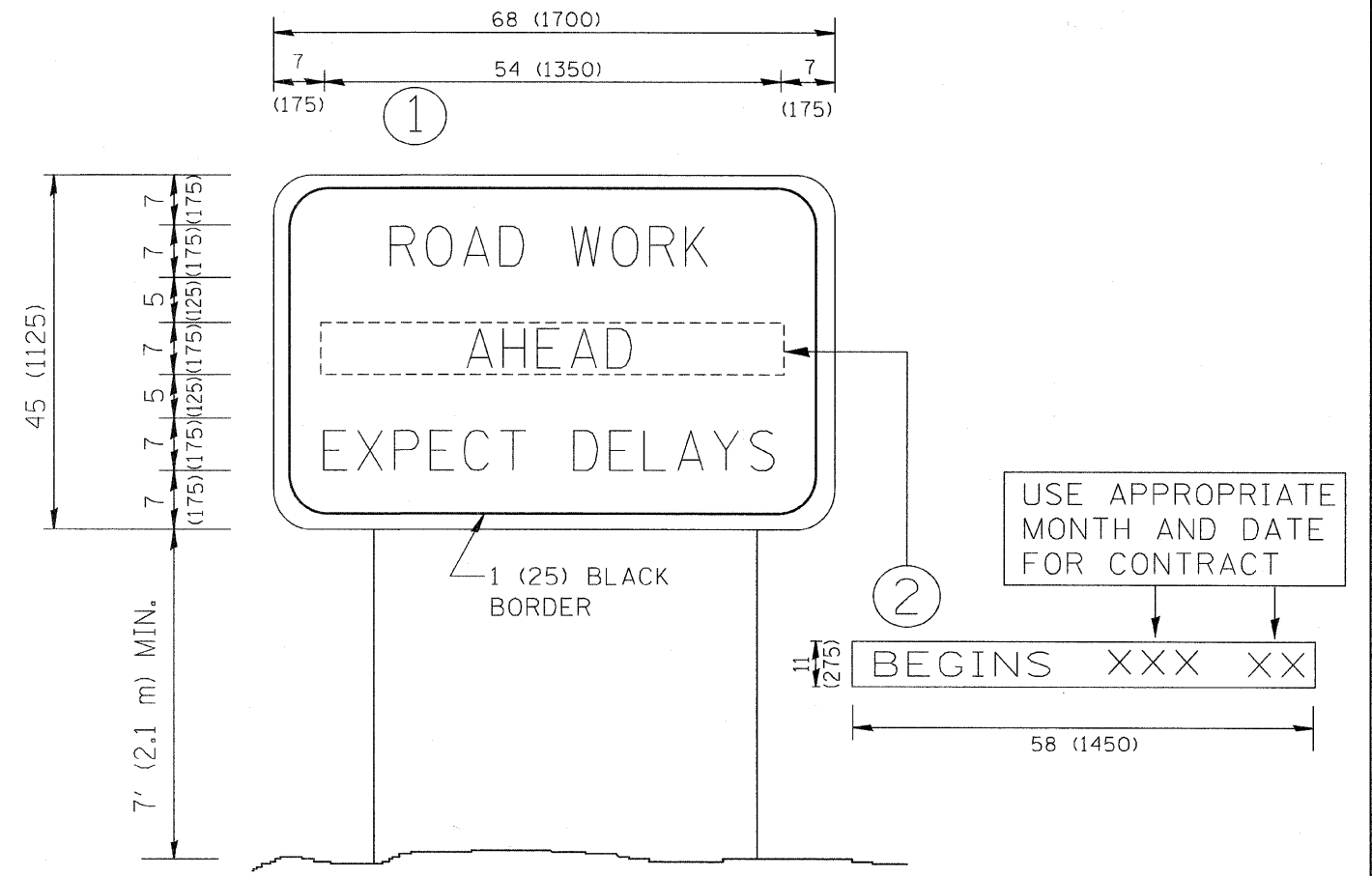
All dimensions are in inches (millimeters) unless otherwise shown.

FILE NAME = W:\dststd\22x34\1c13.dgn	USER NAME = goglienobt	DESIGNED - EVERS	REVISED - T. RAMMACHER 10-27-94
		DRAWN -	REVISED - A. HOUSEH 10-09-96
	PLOT SCALE = 50,000' / IN.	CHECKED -	REVISED - A. HOUSEH 10-17-96
	PLOT DATE = 1/4/2008	DATE - 03-19-90	REVISED - T. RAMMACHER 01-06-00

STATE OF ILLINOIS
DEPARTMENT OF TRANSPORTATION

DISTRICT ONE			
TYPICAL PAVEMENT MARKINGS			
SCALE: NONE	SHEET NO. 1 OF 1 SHEETS	STA. 45+65 TO STA. 46+80	

F.A.U. RTE. 3562	SECTION 430 Y-1 BR	COUNTY COOK	TOTAL SHEETS 15	SHEET NO. 14
TC-13			CONTRACT NO. 60E60	
FED. ROAD DIST. NO. 1 ILLINOIS FED. AID PROJECT				



NOTES:

1. USE BLACK LETTERING ON ORANGE BACKGROUND.
2. ERECT SIGNS IN ADVANCE OF THE LOCATION FOR THE "ROAD CONSTRUCTION AHEAD" SIGN AT LOCATIONS AS DIRECTED BY THE ENGINEER.
3. ERECT SIGN ① WITH INSTALLED PANEL ② ONE WEEK PRIOR TO THE START OF CONSTRUCTION.
4. REMOVE PANEL ② SOON AFTER THE START OF CONSTRUCTION.
5. SEE SPECIAL PROVISION FOR "TEMPORARY INFORMATION SIGNING" FOR ADDITIONAL INFORMATION.
6. ONE SIGN ASSEMBLY EQUALS 25.70 SQ. FT. (2.3 SQ. M.)
7. SHALL BE PAID FOR AS TEMPORARY INFORMATION SIGNING.

ALL DIMENSIONS ARE IN INCHES (MILLIMETERS) UNLESS OTHERWISE SHOWN.

FILE NAME = W:\dotstd\22x34\to22.dgn	USER NAME = gaglianobt	DESIGNED -	REVISED - R. MIRS 09-15-97
		DRAWN -	REVISED - R. MIRS 12-11-97
	PLOT SCALE = 50.000' / IN.	CHECKED -	REVISED - T. RAMMACHER 02-02-99
	PLOT DATE = 1/4/2008	DATE -	REVISED - C. JUCIUS 01-31-07

**STATE OF ILLINOIS
DEPARTMENT OF TRANSPORTATION**

**ARTERIAL ROAD
INFORMATION SIGN**

SCALE: NONE SHEET NO. 1 OF 1 SHEETS STA. 45+65 TO STA. 46+80

F.A.U. RTE. 3562	SECTION 430 Y-1 BR	COUNTY COOK	TOTAL SHEETS 15	SHEET NO. 15
TC-22			CONTRACT NO. 60E60	
FED. ROAD DIST. NO. 1 ILLINOIS FED. AID PROJECT				