

STATE OF ILLINOIS  
DEPARTMENT OF TRANSPORTATION  
DIVISION OF HIGHWAYS

PROPOSED HIGHWAY PLANS  
2-BARREL BOX CULVERT  
REPLACEMENT

FAP 349 / US ROUTE 30  
OVER DITCH (1.5 MI. SOUTH OF 111th ST.)  
SECTION 15 T-1

WILL COUNTY  
C-91-215-09

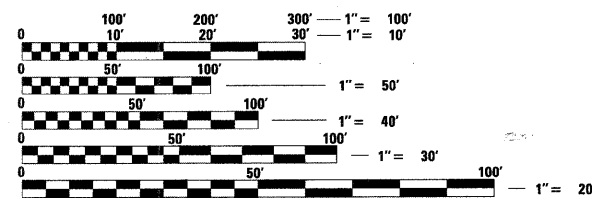
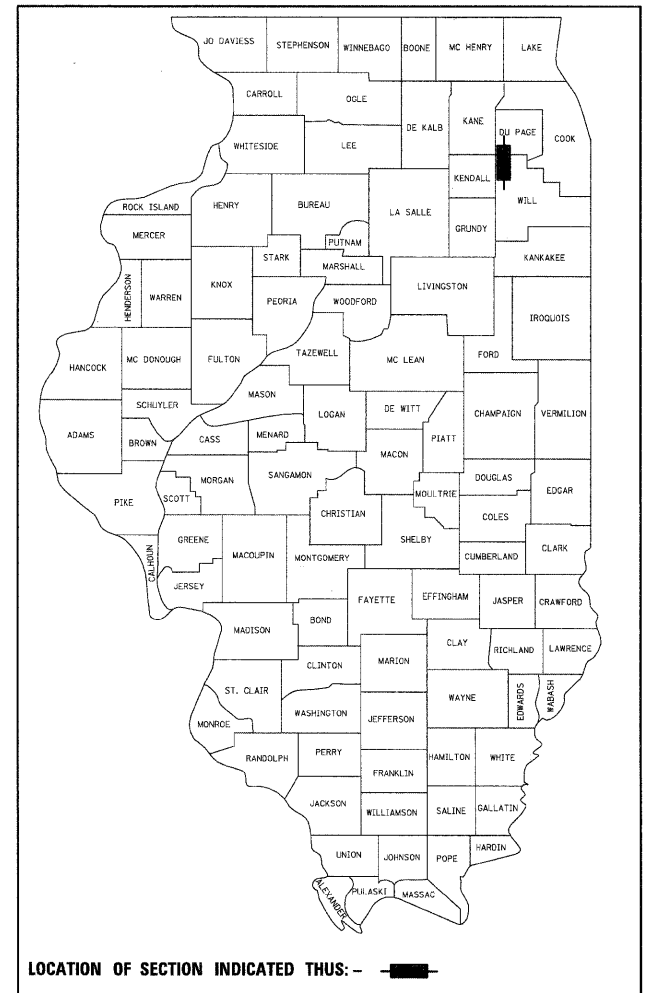
F.A.P. RTE.	SECTION	COUNTY	TOTAL SHEETS	SHEET NO.
349	15 T-1	WILL	20	1
FED. ROAD DIST. NO.	ILLINOIS	CONTRACT NO. 60F69		

D-91-215-09

FOR INDEX OF SHEETS, SEE SHEET NO. 2

DESIGN DESIGNATION  
MINOR ARTERIAL (URBAN)  
ADT 14500 (2007)  
SPEED LIMIT 50 MPH

THE PROPOSED WORK TO BE PERFORMED CONSISTS OF REMOVING THE EXISTING DOUBLE BARREL CULVERT AT STATION 267+59, AND REPLACING THE EXISTING STRUCTURE WITH A NEW 7'x3' DOUBLE-BARREL PRECAST CONCRETE BOX CULVERT UTILIZING PHASED DEMOLITION AND CONSTRUCTION.  
THE PROPOSED STRUCTURE NUMBER IS SN 099-0508.

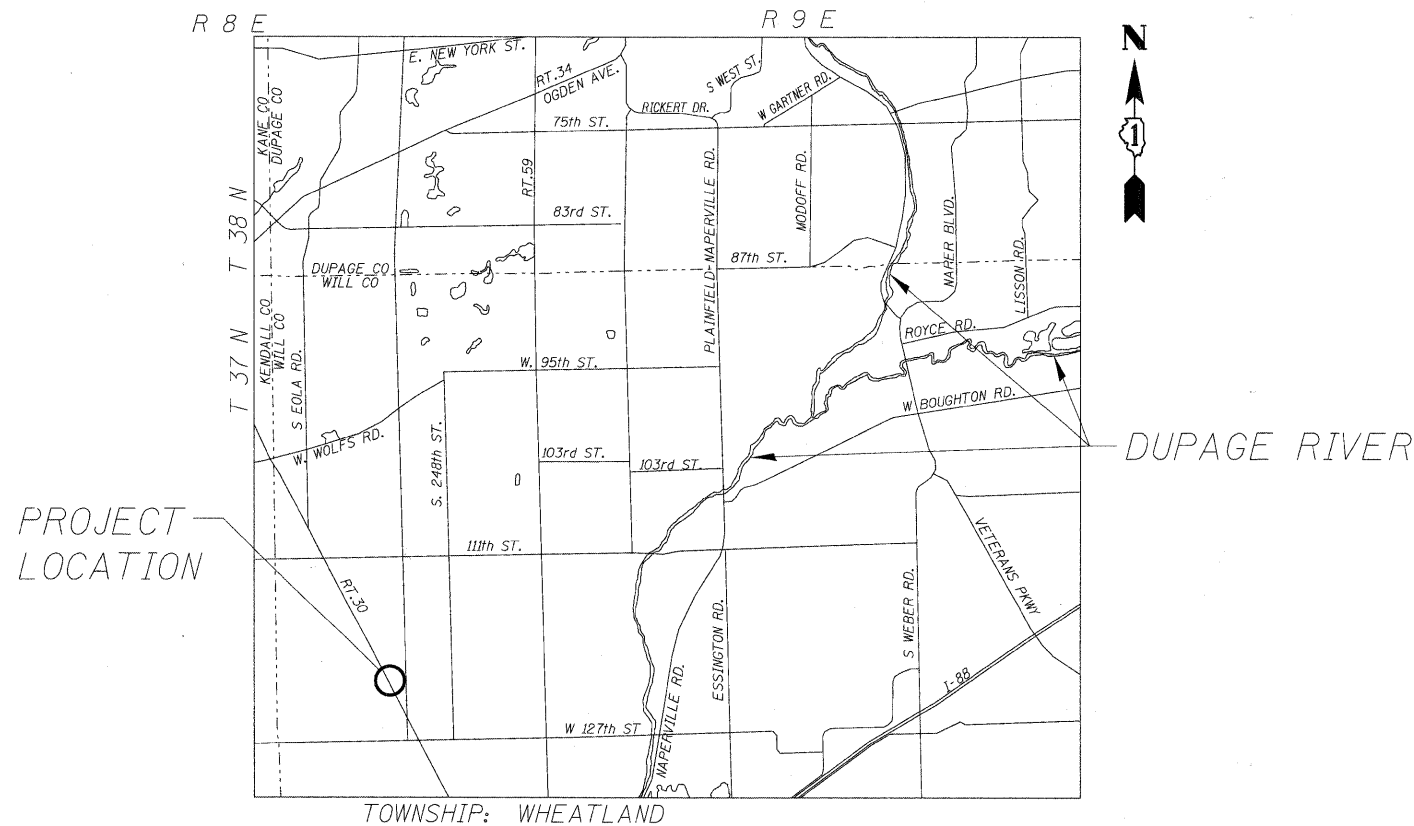


FULL SIZE PLANS HAVE BEEN PREPARED USING STANDARD ENGINEERING SCALES. REDUCED SIZED PLANS WILL NOT CONFORM TO STANDARD SCALES. IN MAKING MEASUREMENTS ON REDUCED PLANS, THE ABOVE SCALES MAY BE USED.

J.U.L.I.E.  
JOINT UTILITY LOCATION INFORMATION FOR EXCAVATION  
1-800-892-0123  
OR 811

PROJECT ENGINEER: REJENDRA C. SHAH (847) 705-4555  
PROJECT MANAGER: CATHERINE KIBBLE (847) 705-4269

CONTRACT NO. 60F69



TOWNSHIP: WHEATLAND

LOCATION SKETCH

NET AND GROSS LENGTH OF PROJECT = 48' = 0.009 MI

STATE OF ILLINOIS  
DEPARTMENT OF TRANSPORTATION  
DIVISION OF HIGHWAYS

SUBMITTED JANUARY 20, 2009

Diane M. Kibble  
DEPUTY DIRECTOR OF HIGHWAYS, REGION ENGINEER

January 30, 2009  
Charles G. Ingersoll  
ENGINEER OF DESIGN AND ENVIRONMENT

January 30, 2009  
Christine M. Reed  
DIRECTOR OF HIGHWAYS, CHIEF ENGINEER

PRINTED BY THE AUTHORITY  
OF THE STATE OF ILLINOIS

LONGO, INC.  
CONSULTING ENGINEERS  
1560 WALL ST, SUITE 222  
NAPERVILLE, ILLINOIS 60563 Ph: (630) 571-9100

STATE OF ILLINOIS  
REGISTERED PROFESSIONAL ENGINEER  
081-005150

WILLIAM H. REED  
REGISTERED PROFESSIONAL ENGINEER  
062-047827  
081-005150

Expires 11-30-10 Expires 11-30-09