

STATE OF ILLINOIS
DEPARTMENT OF TRANSPORTATION
DIVISION OF HIGHWAYS

F.A.I. RTE.	SECTION	COUNTY	TOTAL SHEETS	SHEET NO.
290	2008-075 I	COOK/DUPAGE	8	1
FED. ROAD DIST. NO.	ILLINOIS	CONTRACT NO. 60F76		

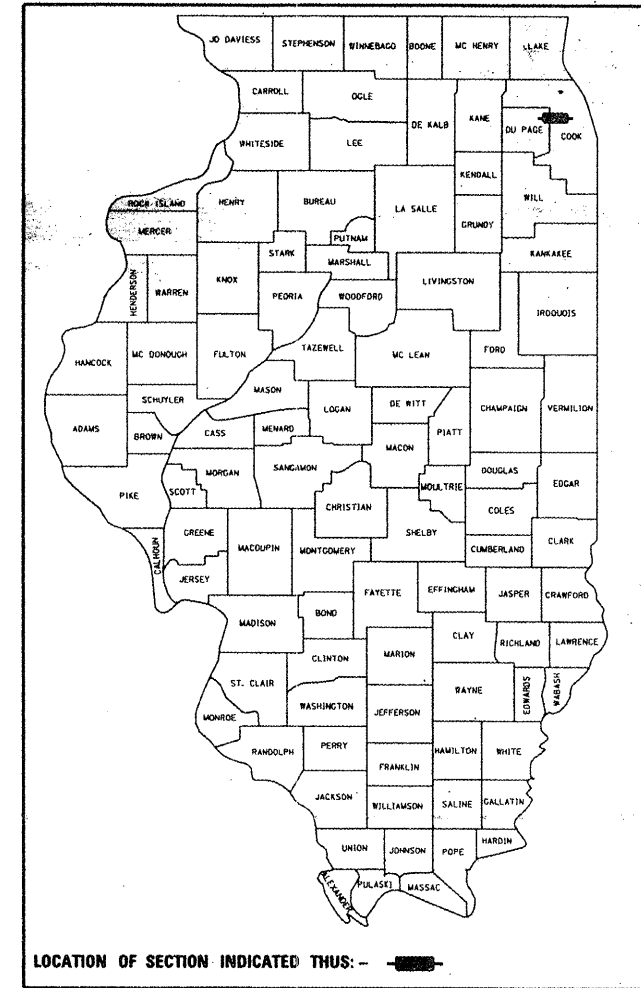
8+1=9

D-91-227-09

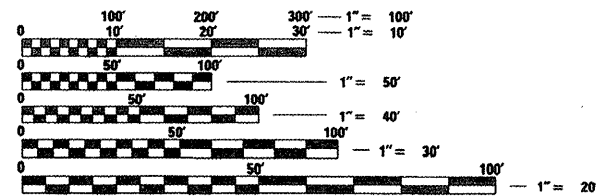
FOR INDEX OF SHEETS, SEE SHEET NO. 2

PROJECT IS LOCATED IN THE CITIES OF ELMHURST AND CHICAGO, AND THE VILLAGES OF ELK GROVE VILLAGE, ITASCA, ADDISON, BERKELEY, HILLSIDE, BELLWOOD, WESTCHESTER, BROADVIEW, MAYWOOD, FOREST PARK, AND OAK PARK

**PROPOSED
HIGHWAY PLANS**
F.A.I. ROUTE 290 (I-290/L-53)
IL-72 (HIGGINS RD.) TO 1-90/94
SECTION 2008-075 I
SHOULDER RUMBLE STRIPS
PROJECT : HSIP-290-3(061)069
COOK AND DUPAGE COUNTIES
C-91-227-09

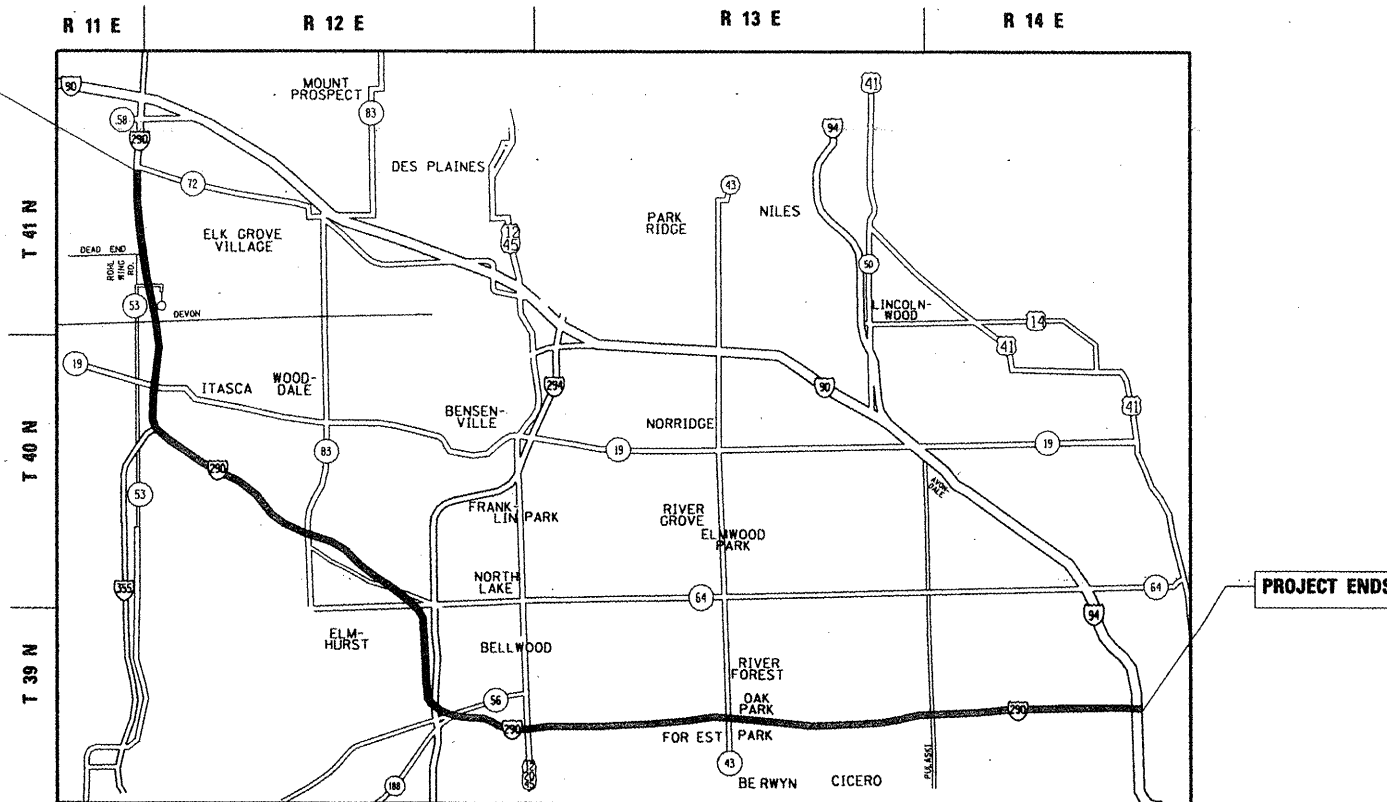


TRAFFIC DATA
SPEED LIMIT: 55 MPH
2007 ADT: 17,000



FULL SIZE PLANS HAVE BEEN PREPARED USING STANDARD ENGINEERING SCALES. REDUCED SIZED PLANS WILL NOT CONFORM TO STANDARD SCALES. IN MAKING MEASUREMENTS ON REDUCED PLANS, THE ABOVE SCALES MAY BE USED.

J.U.L.I.E.
JOINT UTILITY LOCATION INFORMATION FOR EXCAVATION
1-800-892-0123
OR 811



ELK GROVE, SCHAUMBURG, ADDISON, PROVISO, OAK PARK, WEST, AND SOUTH TOWNSHIPS

PROJECT ENGINEER: JENPAI CHANG (847) 705-4432
PROJECT MANAGER: KEN ENG

CONTRACT NO. 60F76

GROSS AND NET LENGTH = 147470.40 FT. = 27.93 MILES

STATE OF ILLINOIS
DEPARTMENT OF TRANSPORTATION
DIVISION OF HIGHWAYS
SUBMITTED December 18, 20 08
Diana M. O'Neale DEPUTY DIRECTOR OF HIGHWAYS, REGION ENGINEER
January 30, 20 09
Charles J. Ingersoll ENGINEER OF DESIGN AND ENVIRONMENT
January 30, 20 09
Christine M. Reed DIRECTOR OF HIGHWAYS, CHIEF ENGINEER

PRINTED BY THE AUTHORITY
OF THE STATE OF ILLINOIS

INDEX OF SHEETS

STATE STANDARDS

GENERAL NOTES

SHEET NO.

DESCRIPTION

1	TITLE SHEET
2	INDEX OF SHEETS, STATE STANDARDS, & GENERAL NOTES
3	SUMMARY OF QUANTITIES
4 - 7	SCHEDULE OF QUANTITIES
8	TRAFFIC CONTROL DETAILS FOR FREEWAY SHOULDER CLOSURES AND PARTIAL RAMP CLOSURES
8 A	TRAFFIC CONTROL DETAILS FOR FREEWAY SINGLE & MULTI-LANE WEAVE

000001 - 05	STANDARD SYMBOLS, ABBREVIATIONS, AND PATTERNS
642001 - 01	SHOULDER RUMBLE STRIPS
701400 - 03	APPROACH TO LANE CLOSURE, FREEWAY/EXPRESSWAY
701401 - 05	LANE CLOSURE, FREEWAY/EXPRESSWAY
701411 - 05	LANE CLOSURE, MULTILANE, AT ENTRANCE OR EXIT RAMP, FOR SPEEDS ≥ 45 MPH
701426 - 03	LANE CLOSURE, MULTILANE, INTERMITTENT OR MOVING OPERATION, FOR SPEEDS ≥ 45 MPH
701901 - 01	TRAFFIC CONTROL DEVICES

BEFORE STARTING ANY EXCAVATION, THE CONTRACTOR SHALL CALL "JULIE" AT 800-892-0123 (OR 811) FOR FIELD LOCATIONS OF BURIED ELECTRIC, TELEPHONE AND GAS FACILITIES. (48 HOUR NOTIFICATION IS REQUIRED)

THE CONTRACTOR SHALL COORDINATE CONSTRUCTION ACTIVITIES WITH UTILITY COMPANIES AND THE CITY OF CHICAGO & ELMHURST, AND THE VILLAGES OF ELK GROVE VILLAGE, ITASCA, ADDISON, BERKELEY, HILLSIDE, BELLWOOD, WESTCHESTER, BROADVIEW, MAYWOOD, FOREST PARK, AND OAK PARK.

THE CONTRACTOR WILL NOT BE ALLOWED TO SET UP A YARD OR FIELD OFFICE ON STATE PROPERTY WITHOUT WRITTEN PERMISSION FROM THE DEPARTMENT.

BARRICADES: THE CONTRACTOR SHALL PROVIDE AND INSTALL TWO (2) WEIGHTED SANDBAGS ON EACH TYPE I, II OR TYPE III BARRICADE USED- ONE (1) WEIGHTED SAND BAG ACROSS EACH BOTTOM RAIL.

THE CONTRACTOR SHALL CONTACT THE DISTRICT ONE EXPRESSWAY TRAFFIC CONTROL SUPERVISOR AT (847) 705-4155 A MINIMUM OF 72 HOURS PRIOR TO BEGINNING WORK.

DISPOSAL OF THE SHOULDER CUTTINGS AND CLEAN SWEEPING OF THE SHOULDERS SHALL BE COMPLETED PRIOR TO THE OPENING OF THE SHOULDERS AND TRAFFIC. DISPOSAL AND SWEEPING SHALL BE INCLUDED IN THE COST OF "SHOULDER RUMBLE STRIPS."

**STATE OF ILLINOIS
DEPARTMENT OF TRANSPORTATION**

**INDEX OF SHEETS, STATE STANDARDS
AND GENERAL NOTES**

FILE NAME =	USER NAME = mossse	DESIGNED -	REVISED -	STATE OF ILLINOIS DEPARTMENT OF TRANSPORTATION	INDEX OF SHEETS, STATE STANDARDS AND GENERAL NOTES	F.A.I. RTE.	SECTION	COUNTY	TOTAL SHEETS	SHEET NO.
g:\pw\work\PW100T\MOSSSE\0107599\sh_rdw.dgn	DRAWN -	REVISED -	290			2008-075 I	COOK/DUPAGE	8	2	
PLOT SCALE = 100.0000' / IN.	CHECKED -	REVISED -	CONTRACT NO. 60F76							
PLOT DATE = 1/8/2009	DATE -	REVISED -	SCALE:			SHEET NO. OF SHEETS	STA. TO STA.	FED. ROAD DIST. NO.	ILLINOIS FED. AID PROJECT	

90% FED.
10% STATE

SUMMARY OF QUANTITIES			CONSTRUCTION TYPE CODE						
CODE NO	ITEM	UNIT	URBAN TOTAL QUANTITIES	COOK SFTY-2A	DUPAGE SFTY-2A				
64200105	SHOULDER RUMBLE STRIP:	FOOT	534,810	338,928	195,888				
67000400	ENGINEER'S FIELD OFFICE, TYPE A	CAL MO	6	4.2	1.8				
67100100	MOBILIZATION	L SUM	1	0.7	0.3				
X7011015	TRAFFIC CONTROL AND PROTECTION (EXPRESSWAYS)	L SUM	1	0.7	0.3				
© 20076600	TRAINEES	HOUR	500	500					

SUMMARY OF QUANTITIES			CONSTRUCTION TYPE CODE						
CODE NO	ITEM	UNIT	TOTAL QUANTITIES						

© Y080

Rev.

I-290 WESTBOUND-INSIDE SHOULDER

LOCATIONS FOR I-290	RUMBLE STRIP LENGTH (FT)	SHOULDER SURFACE TYPE	COUNTY	LOCATIONS FOR I-290	REPAIR LENGTH (FT)	SURFACE TYPE	COUNTY
HIGGINS TO BIESTERFIELD	10560	CONCRETE	COOK	CENTRAL TO LARAMIE	166	CONCRETE	COOK
BIESTERFIELD TO THORNDALE	3168	CONCRETE	COOK	CENTRAL TO LARAMIE	2686	HMA	COOK
BIESTERFIELD TO THORNDALE	528	HMA	DUPAGE	LARAMIE TO CICERO	2122	HMA	COOK
THORNDALE TO I-355	8976	HMA	DUPAGE	CICERO TO INDEPENDENCE	6000	HMA	COOK
I-355 TO I-83	16896	HMA	DUPAGE	INDEPENDENCE TO KEDZIE	3600	HMA	COOK
I-83 TO YORK	6045	HMA	DUPAGE	KEDZIE TO WESTERN	4172	HMA	COOK
YORK TO NORTH	16527	HMA	DUPAGE	WESTERN TO DAMEN	1272	HMA	COOK
NORTH TO ST. CHARLES	2128	HMA	COOK	DAMEN TO ASHLAND	2072	HMA	COOK
ST. CHARLES TO I-294	5280	HMA	COOK	ASHLAND TO LOOMIS	472	HMA	COOK
I-294 TO MANNEHEIM	10428	HMA	COOK	LOOMIS TO I-90/94	3030	HMA	COOK
MANNEHEIM TO 25TH	2492	HMA	COOK				
25TH TO 17TH	2414	HMA	COOK				
17TH TO 1ST	5070	HMA	COOK				
1ST TO DESPLAINES	2549	CONCRETE	COOK				
1ST TO DESPLAINES	2231	HMA	COOK				
DESPLAINES TO HARLEM	1773	CONCRETE	COOK				
DESPLAINES TO HARLEM	1257	HMA	COOK				
HARLEM TO AUSTIN	8290	CONCRETE	COOK				
AUSTIN TO CENTRAL	1500	CONCRETE	COOK				

FILE NAME =	USER NAME = mosso	DESIGNED -	REVISED -	STATE OF ILLINOIS DEPARTMENT OF TRANSPORTATION	SCHEDULE OF QUANTITIES				F.A.I. RTE.	SECTION	COUNTY	TOTAL SHEETS	SHEET NO.		
et\pwwork\VPWIDOT\MOSSE\0107599\sh...		DRAWN -	REVISED -		SCALE:	SHEET NO.	OF	SHEETS	STA.	TO STA.	290	2008-075 I	COOK/DUPAGE	8	4
		CHECKED -	REVISED -		CONTRACT NO. 60F76										
		DATE -	REVISED -		FED. ROAD DIST. NO. ILLINOIS FED. AID PROJECT										

I-290 WESTBOUND-OUTSIDE SHOULDER

LOCATIONS FOR I-290	RUMBLE STRIP LENGTH (FT)	SHOULDER SURFACE TYPE	COUNTY	LOCATIONS FOR I-290	REPAIR LENGTH (FT)	SURFACE TYPE	COUNTY
HIGGINS TO BIESTERFIELD	10560	CONCRETE	COOK	CENTRAL TO LARAMIE	166	CONCRETE	COOK
BIESTERFIELD TO THORNDALE	3168	CONCRETE	COOK	CENTRAL TO LARAMIE	2686	HMA	COOK
BIESTERFIELD TO THORNDALE	528	HMA	DUPAGE	LARAMIE TO CICERO	2122	HMA	COOK
THORNDALE TO I-355	8976	HMA	DUPAGE	CICERO TO INDEPENDENCE	6000	HMA	COOK
I-355 TO I-83	16896	HMA	DUPAGE	INDEPENDENCE TO KEDZIE	3600	HMA	COOK
I-83 TO YORK	6045	HMA	DUPAGE	KEDZIE TO WESTERN	4172	HMA	COOK
YORK TO NORTH	16527	HMA	DUPAGE	WESTERN TO DAMEN	1272	HMA	COOK
NORTH TO ST. CHARLES	2128	HMA	COOK	DAMEN TO ASHLAND	2072	HMA	COOK
ST. CHARLES TO I-294	5280	HMA	COOK	ASHLAND TO LOOMIS	472	HMA	COOK
I-294 TO MANNEHEIM	10428	HMA	COOK	LOOMIS TO I-90/94	3030	HMA	COOK
MANNEHEIM TO 25TH	2492	HMA	COOK				
25TH TO 17TH	2414	HMA	COOK				
17TH TO 1ST	5070	HMA	COOK				
1ST TO DESPLAINES	2549	CONCRETE	COOK				
1ST TO DESPLAINES	2231	HMA	COOK				
DESPLAINES TO HARLEM	1773	CONCRETE	COOK				
DESPLAINES TO HARLEM	1257	HMA	COOK				
HARLEM TO AUSTIN	8290	CONCRETE	COOK				
AUSTIN TO CENTRAL	1500	CONCRETE	COOK				

FILE NAME =	USER NAME = mossse	DESIGNED -	REVISED -	STATE OF ILLINOIS DEPARTMENT OF TRANSPORTATION	SCHEDULE OF QUANTITIES				F.A.I. RTE.	SECTION	COUNTY	TOTAL SHEETS	SHEET NO.
os:\pw_work\PWIDOT\MOSSSE\0107599\sh_rdy.dgn	DRAWN -	REVISED -	290						2008-075 I	COOK/DUPAGE	8	5	
PLOT SCALE = 100.0000' / IN.	CHECKED -	REVISED -	SCALE: SHEET NO. OF SHEETS STA. TO STA.					FED. ROAD DIST. NO.	ILLINOIS FED. AID PROJECT				
PLOT DATE = 1/12/2009	DATE -	REVISED -	CONTRACT NO. 60F76										

I-290 EASTBOUND-INSIDE SHOULDER

LOCATIONS FOR I-290	RUMBLE STRIP LENGTH (FT)	SHOULDER SURFACE TYPE	COUNTY	LOCATIONS FOR I-290	REPAIR LENGTH (FT)	SURFACE TYPE	COUNTY
HIGGINS TO BIESTERFIELD	10560	CONCRETE	COOK	CENTRAL TO LARAMIE	166	CONCRETE	COOK
BIESTERFIELD TO THORNDALE	3168	CONCRETE	COOK	CENTRAL TO LARAMIE	2686	HMA	COOK
BIESTERFIELD TO THORNDALE	528	HMA	DUPAGE	LARAMIE TO CICERO	2122	HMA	COOK
THORNDALE TO I-355	8976	HMA	DUPAGE	CICERO TO INDEPENDENCE	6000	HMA	COOK
I-355 TO I-83	16896	HMA	DUPAGE	INDEPENDENCE TO KEDZIE	3600	HMA	COOK
I-83 TO YORK	6045	HMA	DUPAGE	KEDZIE TO WESTERN	4172	HMA	COOK
YORK TO NORTH	16527	HMA	DUPAGE	WESTERN TO DAMEN	1272	HMA	COOK
NORTH TO ST. CHARLES	2128	HMA	COOK	DAMEN TO ASHLAND	2072	HMA	COOK
ST. CHARLES TO I-294	5280	HMA	COOK	ASHLAND TO LOOMIS	472	HMA	COOK
I-294 TO MANNEHEIM	10428	HMA	COOK	LOOMIS TO I-90/94	3030	HMA	COOK
MANNEHEIM TO 25TH	2492	HMA	COOK				
25TH TO 17TH	2414	HMA	COOK				
17TH TO 1ST	5070	HMA	COOK				
1ST TO DESPLAINES	2549	CONCRETE	COOK				
1ST TO DESPLAINES	2231	HMA	COOK				
DESPLAINES TO HARLEM	1773	CONCRETE	COOK				
DESPLAINES TO HARLEM	1257	HMA	COOK				
HARLEM TO AUSTIN	8290	CONCRETE	COOK				
AUSTIN TO CENTRAL	1500	CONCRETE	COOK				

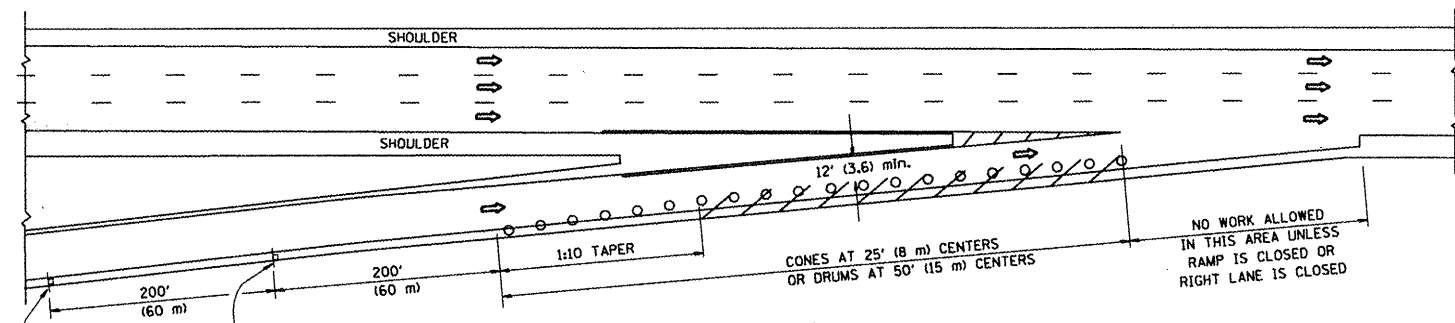
FILE NAME =	USER NAME = mossse	DESIGNED -	REVISED -	STATE OF ILLINOIS DEPARTMENT OF TRANSPORTATION	SCHEDULE OF QUANTITIES				F.A.I. RTE.	SECTION	COUNTY	TOTAL SHEETS	SHEET NO.
ca:\pwwork\PKWIDOT\MOSSE\vd0107599\ah.dgn	DRAWN -	REVISED -	290						2008-075 I	COOK/DUPAGE	8	6	
PLOT SCALE = 100.0000' / IN.	CHECKED -	REVISED -	SCALE: SHEET NO. OF SHEETS STA. TO STA.				FED. ROAD DIST. NO.	ILLINOIS FED. AID PROJECT	CONTRACT NO. 60F76				
PLOT DATE = 1/12/2009	DATE -	REVISED -											

I-290 EASTBOUND-OUTSIDE SHOULDER

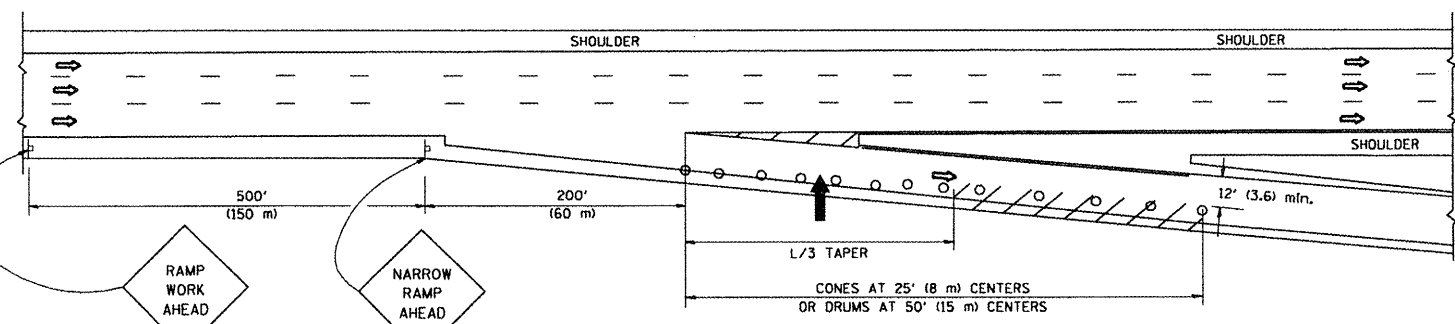
LOCATIONS FOR I-290	RUMBLE STRIP LENGTH (FT)	SHOULDER SURFACE TYPE	COUNTY	LOCATIONS FOR I-290	REPAIR LENGTH (FT)	SURFACE TYPE	COUNTY
HIGGINS TO BIESTERFIELD	10560	CONCRETE	COOK	CENTRAL TO LARAMIE	166	CONCRETE	COOK
BIESTERFIELD TO THORNDALE	3168	CONCRETE	COOK	CENTRAL TO LARAMIE	2686	HMA	COOK
BIESTERFIELD TO THORNDALE	528	HMA	DUPAGE	LARAMIE TO CICERO	2122	HMA	COOK
THORNDALE TO I-355	8976	HMA	DUPAGE	CICERO TO INDEPENDENCE	6000	HMA	COOK
I-355 TO I-83	16896	HMA	DUPAGE	INDEPENDENCE TO KEDZIE	3600	HMA	COOK
I-83 TO YORK	6045	HMA	DUPAGE	KEDZIE TO WESTERN	4172	HMA	COOK
YORK TO NORTH	16527	HMA	DUPAGE	WESTERN TO DAMEN	1272	HMA	COOK
NORTH TO ST. CHARLES	2128	HMA	COOK	DAMEN TO ASHLAND	2072	HMA	COOK
ST. CHARLES TO I-294	5280	HMA	COOK	ASHLAND TO LOOMIS	472	HMA	COOK
I-294 TO MANNEHEIM	10428	HMA	COOK	LOOMIS TO I-90/94	3030	HMA	COOK
MANNEHEIM TO 25TH	2492	HMA	COOK				
25TH TO 17TH	2414	HMA	COOK				
17TH TO 1ST	5070	HMA	COOK				
1ST TO DESPLAINES	2549	CONCRETE	COOK				
1ST TO DESPLAINES	2231	HMA	COOK				
DESPLAINES TO HARLEM	1773	CONCRETE	COOK				
DESPLAINES TO HARLEM	1257	HMA	COOK				
HARLEM TO AUSTIN	8290	CONCRETE	COOK				
AUSTIN TO CENTRAL	1500	CONCRETE	COOK				

FILE NAME =	USER NAME = mosse	DESIGNED -	REVISED -	STATE OF ILLINOIS DEPARTMENT OF TRANSPORTATION	SCHEDULE OF QUANTITIES			F.A.I. RTE.	SECTION	COUNTY	TOTAL SHEETS	SHEET NO.
al\pw\work\PIW\DOT\MOSSE\0107599\sh.r	DRAWN -	REVISED -	290					2008-075 I	COOK/DUPAGE	8	7	
PLOT SCALE = 100.0000' / IN.	CHECKED -	REVISED -	SCALE:			FED. ROAD DIST. NO. ILLINOIS FED. AID PROJECT						
PLOT DATE = 1/12/2009	DATE -	REVISED -	SHEET NO.		OF	SHEETS	STA.	TO	STA.	CONTRACT NO. 60F76		

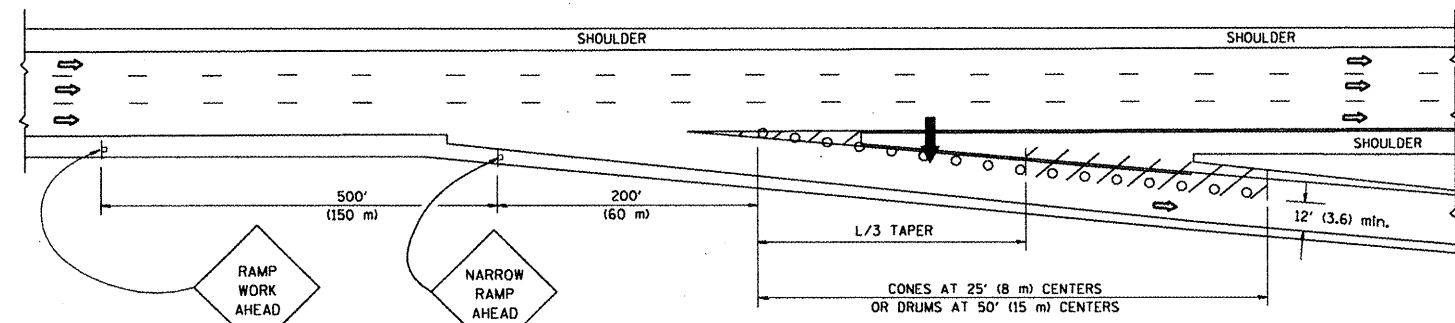
PARTIAL RAMP CLOSURE DETAILS



TYPICAL ENTRANCE RAMP



TYPICAL EXIT RAMP



TYPICAL EXIT RAMP

SYMBOLS

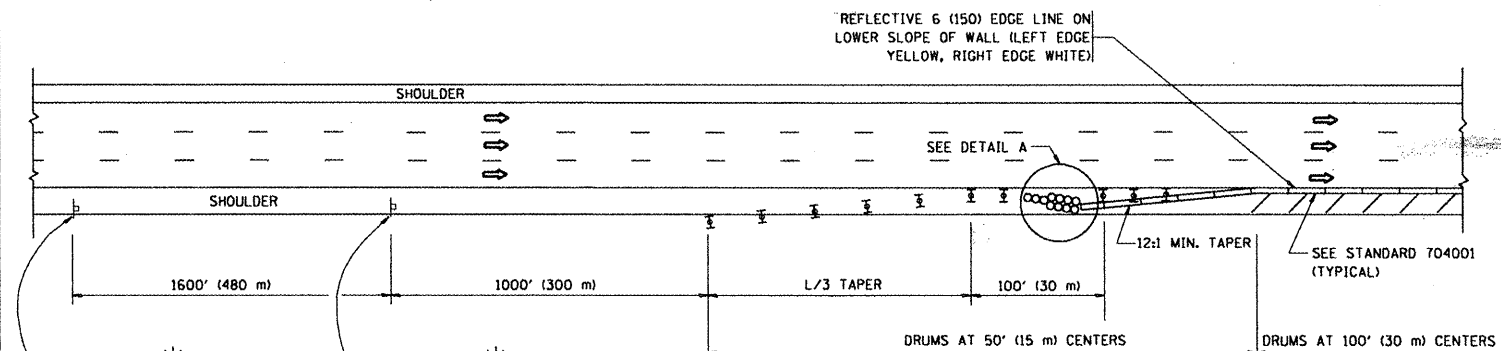
- ARROWBOARD
- WORK AREA
- SIGN ON PORTABLE OR PERMANENT SUPPORT
- FLAGGER WITH CONTROL SIGN
- TYPE II BARRICADE, DRUM OR VERTICAL BARRICADE WITH STEADY BURN MONO-DIRECTIONAL LIGHT
- CONE, DRUM OR BARRICADE

GENERAL NOTES

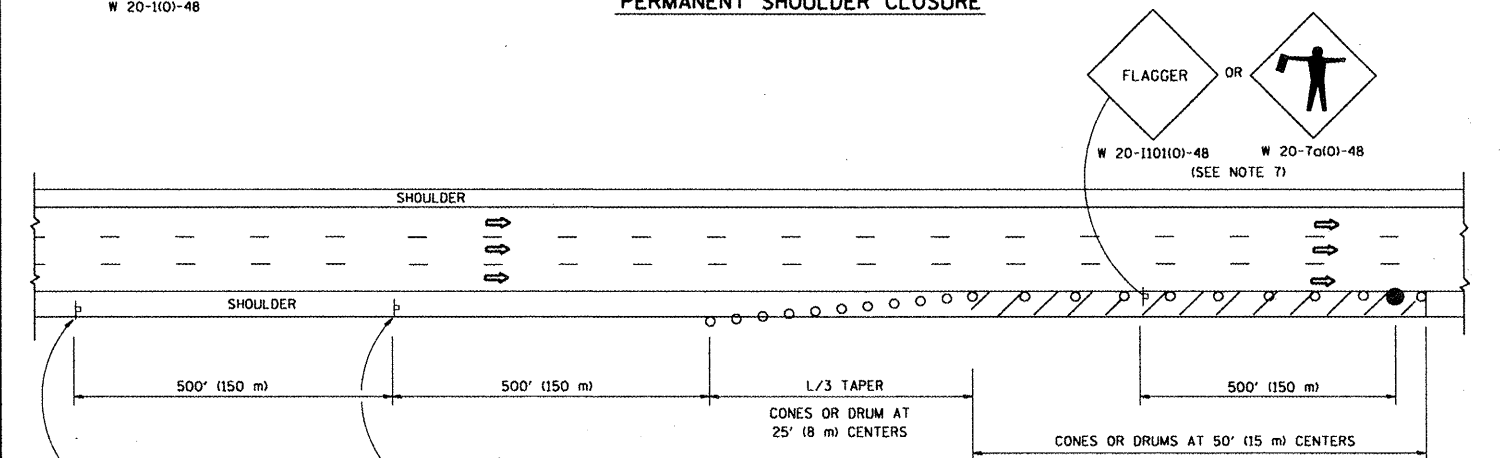
1. THE "L" DISTANCE EQUALS:

SPEED LIMIT	FORMULAS
45 mph (80 km/h)	METRIC ENGLISH
OR GREATER:	$L=0.65(W)(S)$ $L=(W)(S)$
	W = WIDTH OF OFFSET IN FEET (METERS)
	S = NORMAL POSTED SPEED MPH (KM/H)
2. PLASTIC DRUMS WITH HIGH PERFORMANCE REFLECTIVE SHEETING AND STEADY BURNING LIGHTS ARE REQUIRED FOR ALL NIGHTTIME CLOSURES.
3. ALL SIGNS SHALL BE POST MOUNTED IF THE CLOSURE TIME EXCEEDS FOUR DAYS.
4. FLASHING LIGHTS SHALL BE USED DURING THE HOURS OF DARKNESS AND SHALL BE INSTALLED ABOVE THE FIRST TWO SETS OF SIGNS.

SHOULDER CLOSURE DETAILS



PERMANENT SHOULDER CLOSURE



DAYTIME SHOULDER CLOSURE

THIS DETAIL IS USED WHERE:

1. VEHICLES, EQUIPMENT, WORKERS OR THEIR ACTIVITIES ENCRDACH IN AN AREA CLOSER THAN 15' (4.5 m) TO THE EDGE OF PAVEMENT FOR A PERIOD IN EXCESS OF 15 MINUTES.

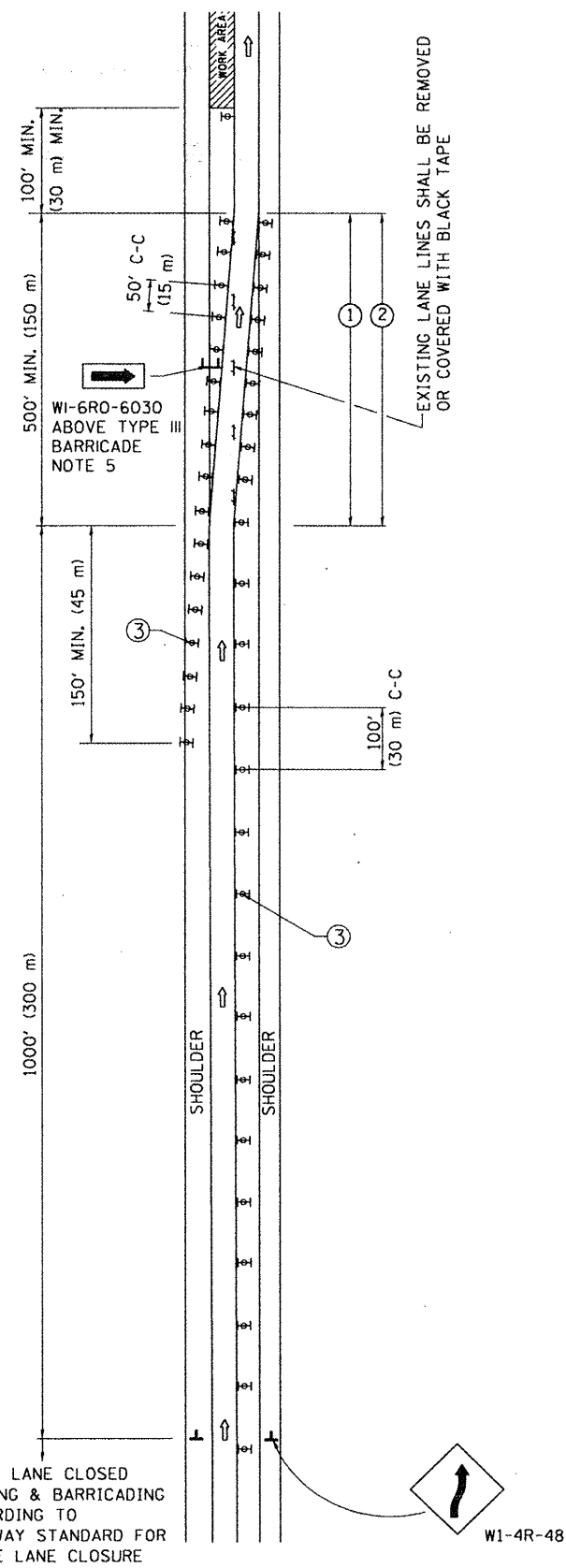
ARRAY DESIGN PER MANUFACTURER TO BE NCHRP 350 COMPLIANT FOR POSTED SPEED.

DETAIL "A" IMPACT ATTENUATOR, TEMPORARY (SEE NOTE 5)

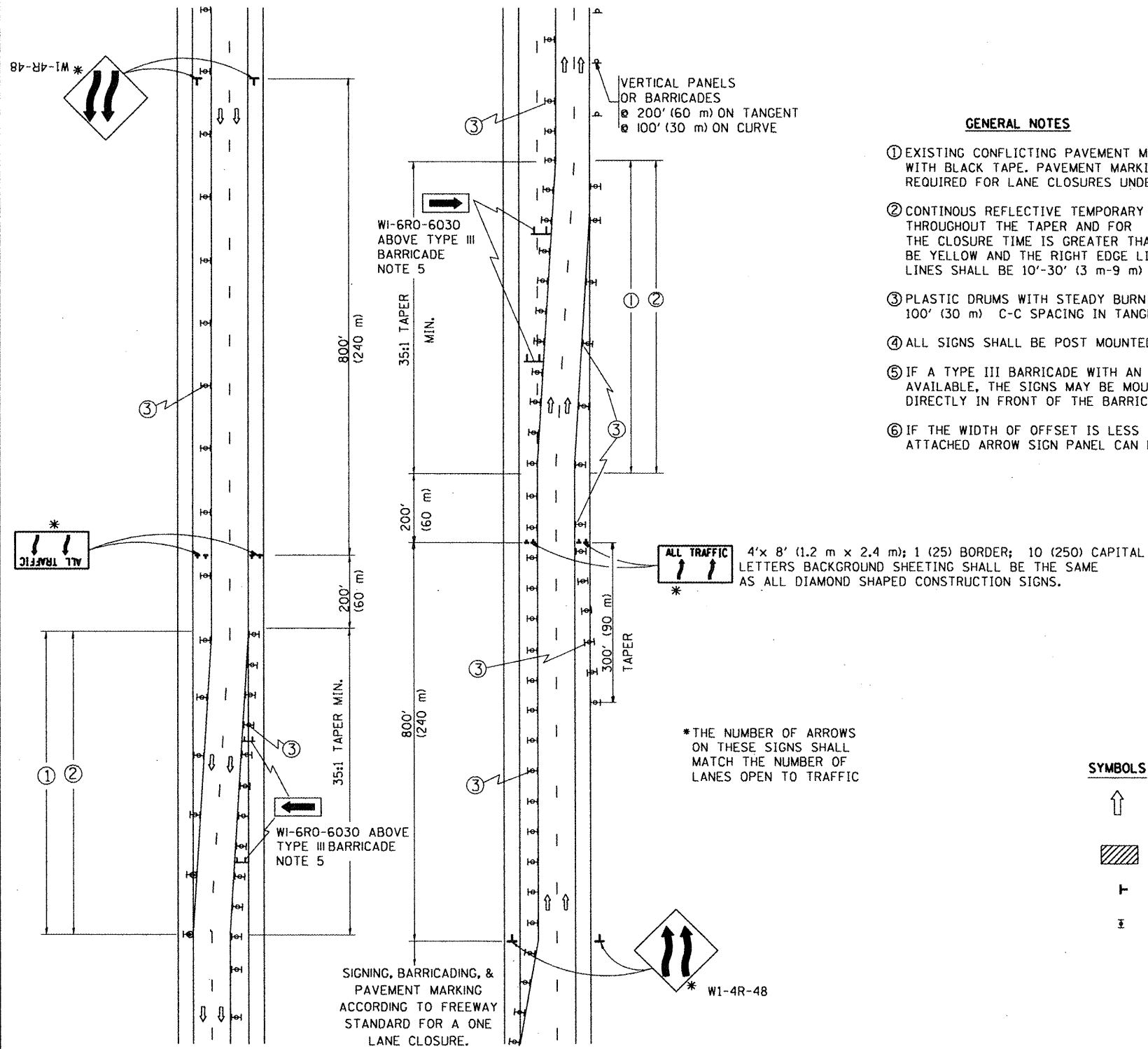
ALL DIMENSIONS ARE IN INCHES (MILLIMETERS) UNLESS OTHERWISE SHOWN.

FILE NAME =	USER NAME = moasse	DESIGNED -	REVISED - J.A.F. 12-02	STATE OF ILLINOIS DEPARTMENT OF TRANSPORTATION	TRAFFIC CONTROL DETAILS FOR FREEWAY SHOULDER CLOSURES AND PARTIAL RAMP CLOSURES	F.A.I. RTE.	SECTION	COUNTY	TOTAL SHEETS	SHEET NO.	
cd:\pwork\PWIDOT\MOASSE\087599\01std.dgn		DRAWN - D.W.S.	REVISED - 04-03		SCALE: NONE	SHEET NO. 1 OF 1 SHEETS	290	2008-075 1	COOK/DUPAGE	8	8
PLOT SCALE = 100.0000' / IN.		CHECKED -	REVISED - J.A.F. 12-06		STA.	TO STA.	TC-17		CONTRACT NO.		
PLOT DATE = 1/8/2009		DATE - 11-96	REVISED - S.P.B. 01-07				FED. ROAD DIST. NO. 1 ILLINOIS FED. AID PROJECT				

SINGLE LANE WEAVE



MULTI-LANE WEAVE



GENERAL NOTES

- ① EXISTING CONFLICTING PAVEMENT MARKING LINES SHALL BE REMOVED OR COVERED WITH BLACK TAPE. PAVEMENT MARKING REMOVAL OR BLACK TAPE SHALL NOT BE REQUIRED FOR LANE CLOSURES UNDER 24 HOURS IN DURATION.
- ② CONTINUOUS REFLECTIVE TEMPORARY PAVEMENT MARKING TAPE SHALL BE PLACED THROUGHOUT THE TAPER AND FOR 300' (90 m) ALONG SIDE THE WORK AREA WHERE THE CLOSURE TIME IS GREATER THAN FOURTEEN DAYS. THE LEFT EDGE LINE SHALL BE YELLOW AND THE RIGHT EDGE LINE SHALL BE WHITE. FOR MULTI-LANE WEAVE LANE LINES SHALL BE 10'-30' (3 m-9 m) SKIP DASH, WHITE.
- ③ PLASTIC DRUMS WITH STEADY BURN LIGHTS AT 50' (15 m) C-C SPACING IN TAPERS AND 100' (30 m) C-C SPACING IN TANGENTS.
- ④ ALL SIGNS SHALL BE POST MOUNTED IF THE CLOSURE TIME EXCEEDS FOUR DAYS.
- ⑤ IF A TYPE III BARRICADE WITH AN ATTACHED SIGN PANEL WHICH MEETS NCHRP 350 IS NOT AVAILABLE, THE SIGNS MAY BE MOUNTED ON NCHRP 350 TEMPORARY SIGN SUPPORTS DIRECTLY IN FRONT OF THE BARRICADE.
- ⑥ IF THE WIDTH OF OFFSET IS LESS THAN 6' THEN THE TYPE III BARRICADE WITH ATTACHED ARROW SIGN PANEL CAN BE ELIMINATED IN THE TAPER AREAS.

SYMBOLS

- ↑ DIRECTION OF TRAFFIC
- ▨ WORK AREA
- ┌ SIGN ON PORTABLE OR PERMANENT SUPPORT
- ⊞ TYPE II BARRICADE, DRUM OR VERTICAL BARRICADE WITH MONO-DIRECTIONAL STEADY BURNING LIGHT

ALL DIMENSIONS ARE IN INCHES (MILLIMETERS) UNLESS OTHERWISE SHOWN

FILE NAME =	USER NAME = mossse	DESIGNED - DWS	REVISED - DWS 11-96	STATE OF ILLINOIS DEPARTMENT OF TRANSPORTATION	TRAFFIC CONTROL DETAILS FOR FREEWAY SINGLE & MULTI-LANE WEAVE			F.A.I. RTE. 290	SECTION 2008-075 1	COUNTY COOK/DUPAGE	TOTAL SHEETS 8	SHEET NO. 8 A
DRAWN -	CHECKED -	REVISED - JAF 01-03	REVISED - JAF 02-06		SCALE: NONE	SHEET NO. 1 OF 1 SHEETS	STA. TO STA.	TC-09 CONTRACT NO.				
PLOT SCALE = 1/8" = 1'-0"	DATE - 02-07	REVISED - SPB 01-07			FED. ROAD DIST. NO. 1 ILLINOIS FED. AID PROJECT							
PLOT DATE = 1/8/2009												