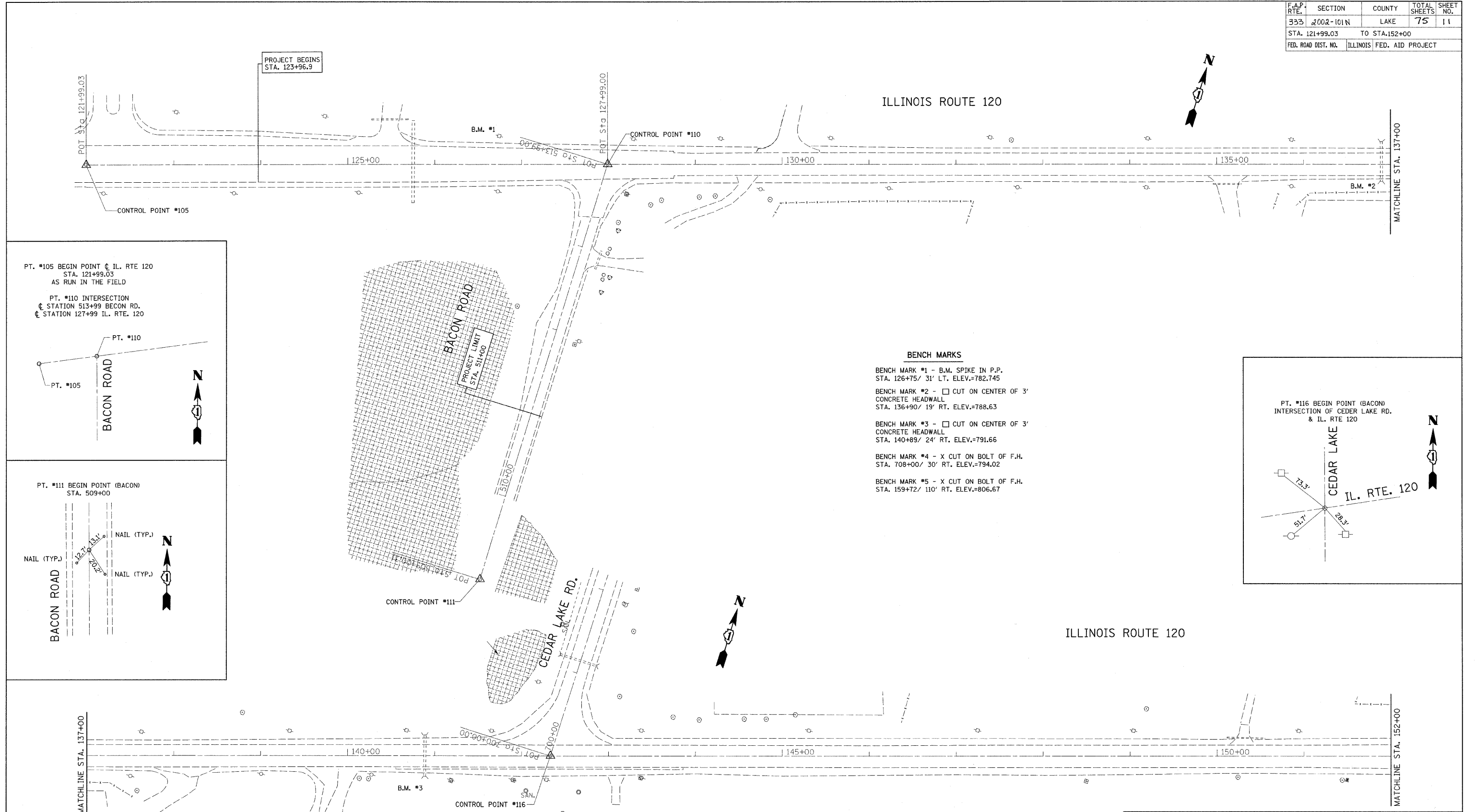
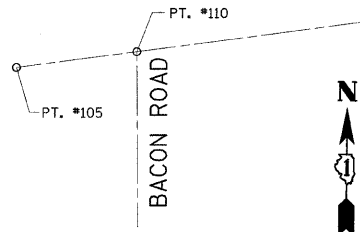


F.A.P. RTE.	SECTION	COUNTY	TOTAL SHEETS	SHEET NO.
333	2002-101N	LAKE	75	11
STA. 121+99.03		TO STA. 152+00		
FED. ROAD DIST. NO.		ILLINOIS FED. AID PROJECT		

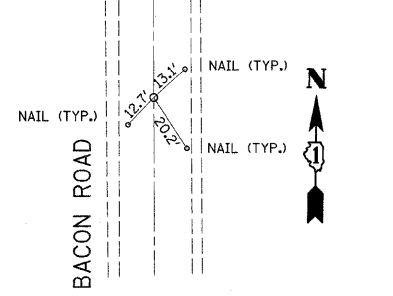


PT. #105 BEGIN POINT @ IL. RTE 120
STA. 121+99.03
AS RUN IN THE FIELD

PT. #110 INTERSECTION
@ STATION 513+99 BECON RD.
@ STATION 127+99 IL. RTE. 120

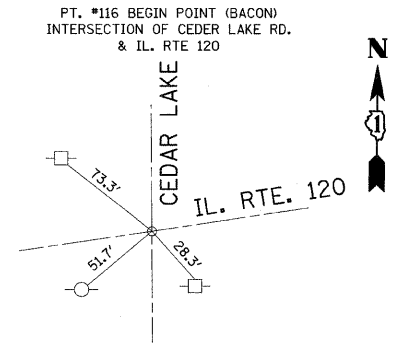


PT. #111 BEGIN POINT (BACON)
STA. 509+00



BENCH MARKS

- BENCH MARK #1 - B.M. SPIKE IN P.P.
STA. 126+75/ 31' LT. ELEV.=782.745
- BENCH MARK #2 - □ CUT ON CENTER OF 3'
CONCRETE HEADWALL
STA. 136+90/ 19' RT. ELEV.=788.63
- BENCH MARK #3 - □ CUT ON CENTER OF 3'
CONCRETE HEADWALL
STA. 140+89/ 24' RT. ELEV.=791.66
- BENCH MARK #4 - X CUT ON BOLT OF F.H.
STA. 708+00/ 30' RT. ELEV.=794.02
- BENCH MARK #5 - X CUT ON BOLT OF F.H.
STA. 159+72/ 110' RT. ELEV.=806.67



REVISIONS	
NAME	DATE

ILLINOIS DEPARTMENT OF TRANSPORTATION

**IL. RTE 120
@ CEDAR LAKE RD.
ALIGNMENT & TIES**

SCALE: VERT. 1"=50'
HORIZ. 1"=50'

DATE 12/16/2008

DRAWN BY _____
CHECKED BY _____

PLOT DATE = 12/16/2008
FILE NAME = c:\pva\wp\p\p\m\DOT\ILLRICH\DWG\62514\11.dwg
PLOT SCALE = 40/3994 / IN.
USER NAME = aiprknk