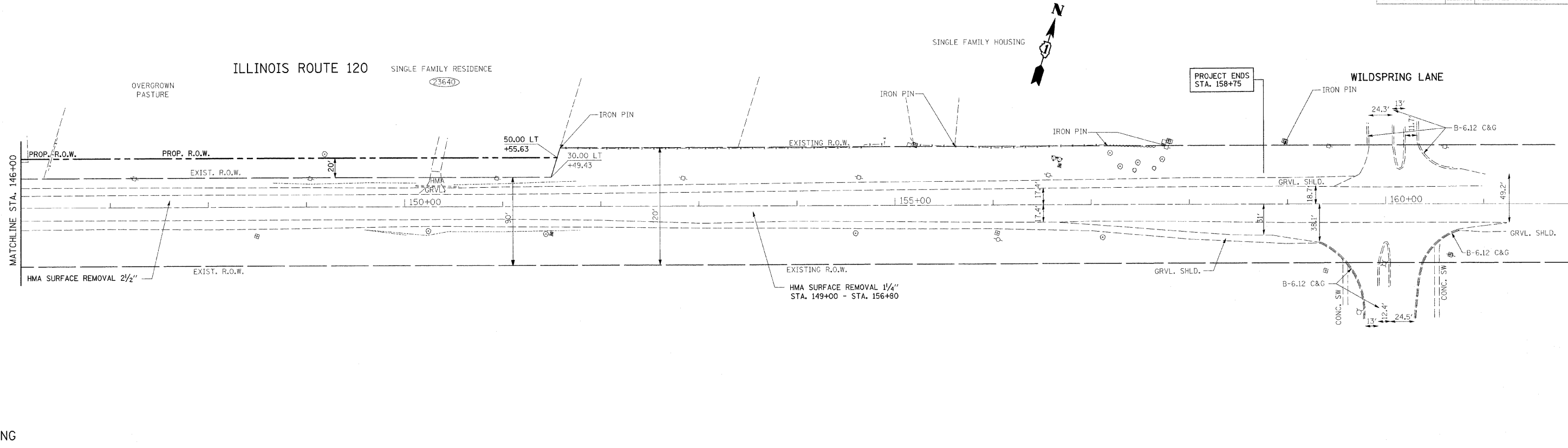
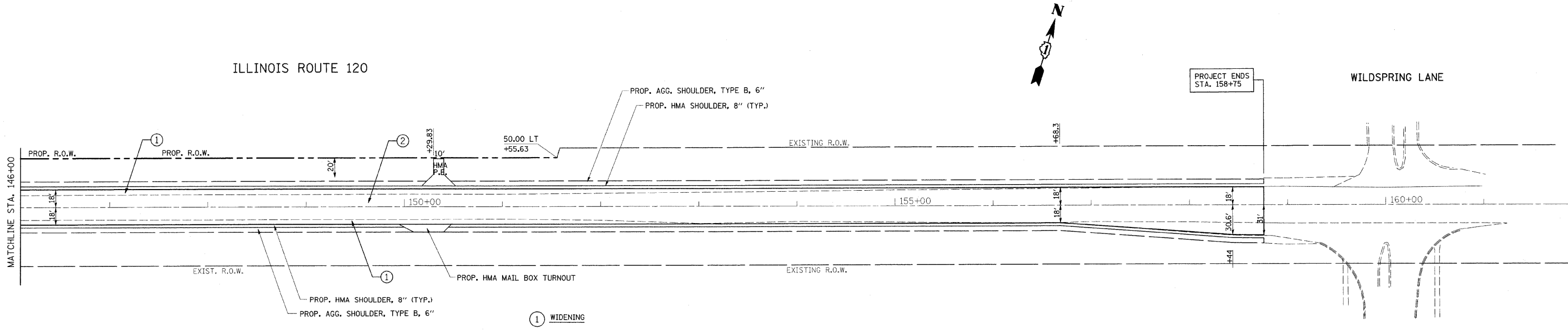


F.A.P. RTE.	SECTION	COUNTY	TOTAL SHEETS	SHEET NO.
333	2002-101N	LAKE	75	15
STA.		TO STA.		
FED. ROAD DIST. NO.		ILLINOIS FED. AID PROJECT		



EXISTING



PROPOSED

- ① WIDENING
 - PROP. HOT-MIX ASPHALT CONCRETE SURFACE COURSE, MIX "D", N70, 1 1/2"
 - PROP. POLYMERIZED LEVELING BINDER (MACHINE METHOD), IL-4.75, N50, 1"
 - PROP. HOT-MIX ASPHALT BASE COURSE WIDENING, 13"
 - PROP. SUBBASE GRANULAR MATERIAL, TYPE B, 4"
- ② RESURFACING (SEE TYPICAL SECTIONS)
 - PROP. HOT-MIX ASPHALT CONCRETE SURFACE COURSE, MIX "D", N70, 1 1/2"
 - PROP. POLYMERIZED LEVELING BINDER (MACHINE METHOD), IL-4.75, N50, 1"
 - PROP. HOT-MIX ASPHALT BINDER COURSE, IL-19, N70, (2 1/4" TO 5 1/2") (STA. 149+50 TO STA. 155+00)

REVISIONS	
NAME	DATE

ILLINOIS DEPARTMENT OF TRANSPORTATION

**IL. RTE 120
@ CEDAR LAKE RD.
EXISTING & PROPOSED
ROADWAY PLAN**

SCALE: VERT. 1"=50'
HORIZ. DATE 12/18/2008

DRAWN BY
CHECKED BY

PLOT DATE = 12/18/2008
 FILE NAME = c:\pva\work\p1007\ILLRICHKO\dms\09182\ah-rday.lbb.dgn
 PLOT SCALE = 49.9999 / IN.
 USER NAME = jtrichko