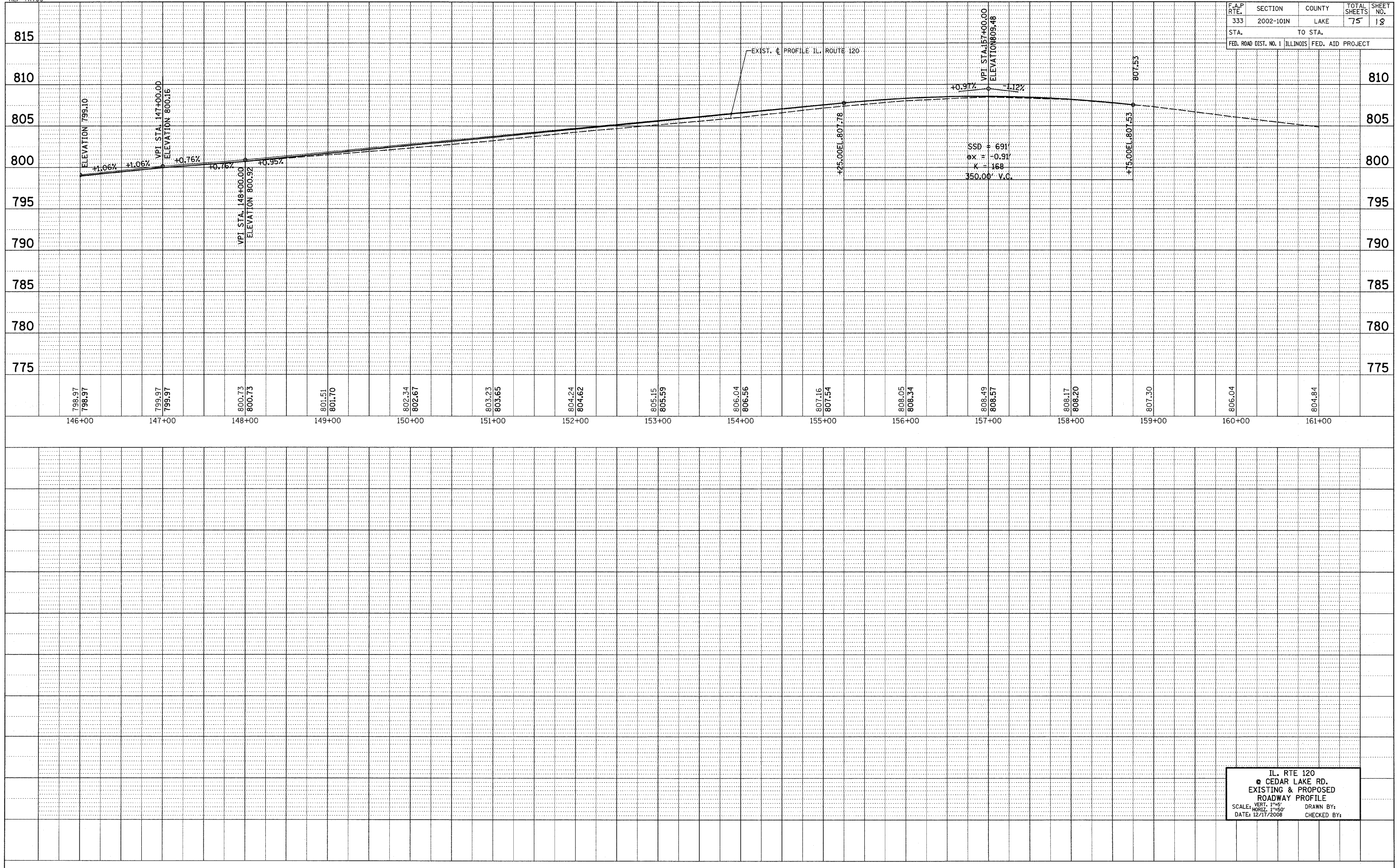


F.A.P. RTE.	SECTION	COUNTY	TOTAL SHEETS	SHEET NO.
333	2002-101N	LAKE	75	18
STA.		TO STA.		
FED. ROAD DIST. NO. 1		ILLINOIS FED. AID PROJECT		



IL. RTE 120  
 @ CEDAR LAKE RD.  
 EXISTING & PROPOSED  
 ROADWAY PROFILE  
 SCALE: VERT. 1"=5'  
 HORIZ. 1"=50'  
 DATE: 12/17/2008  
 DRAWN BY:  
 CHECKED BY: