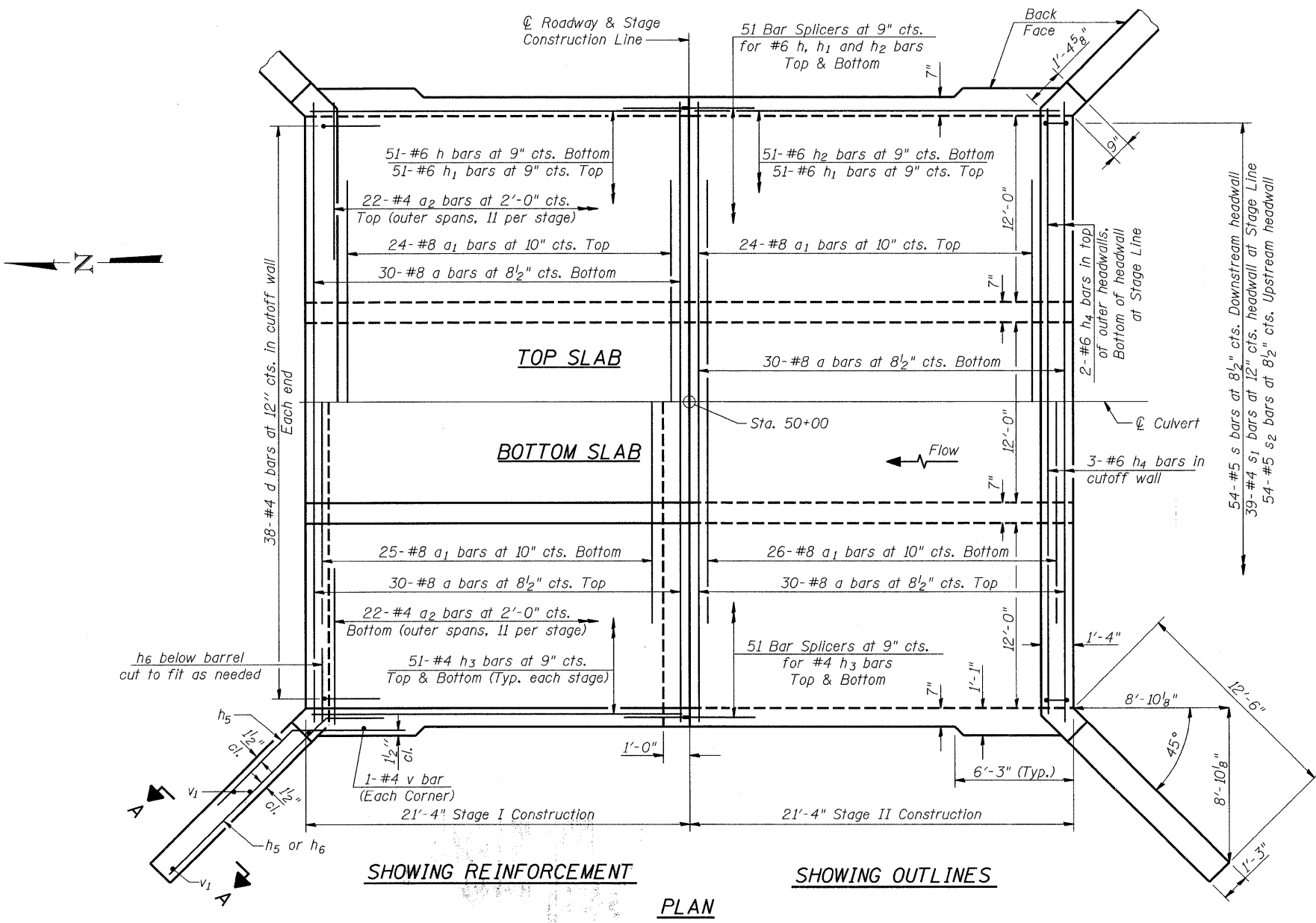
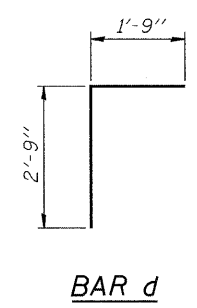
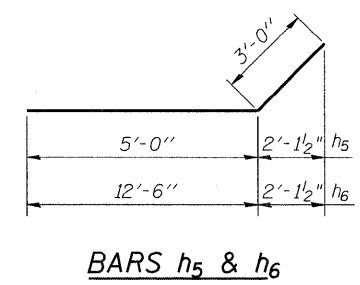
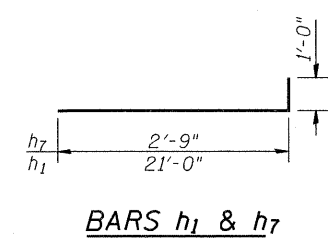
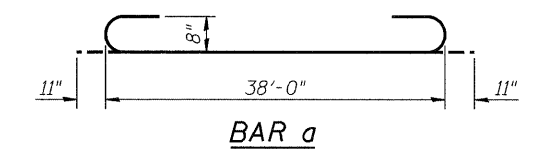
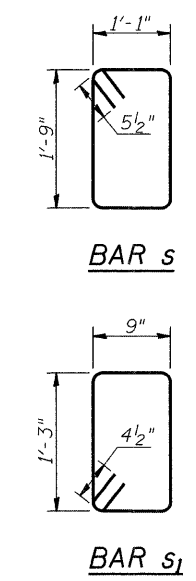
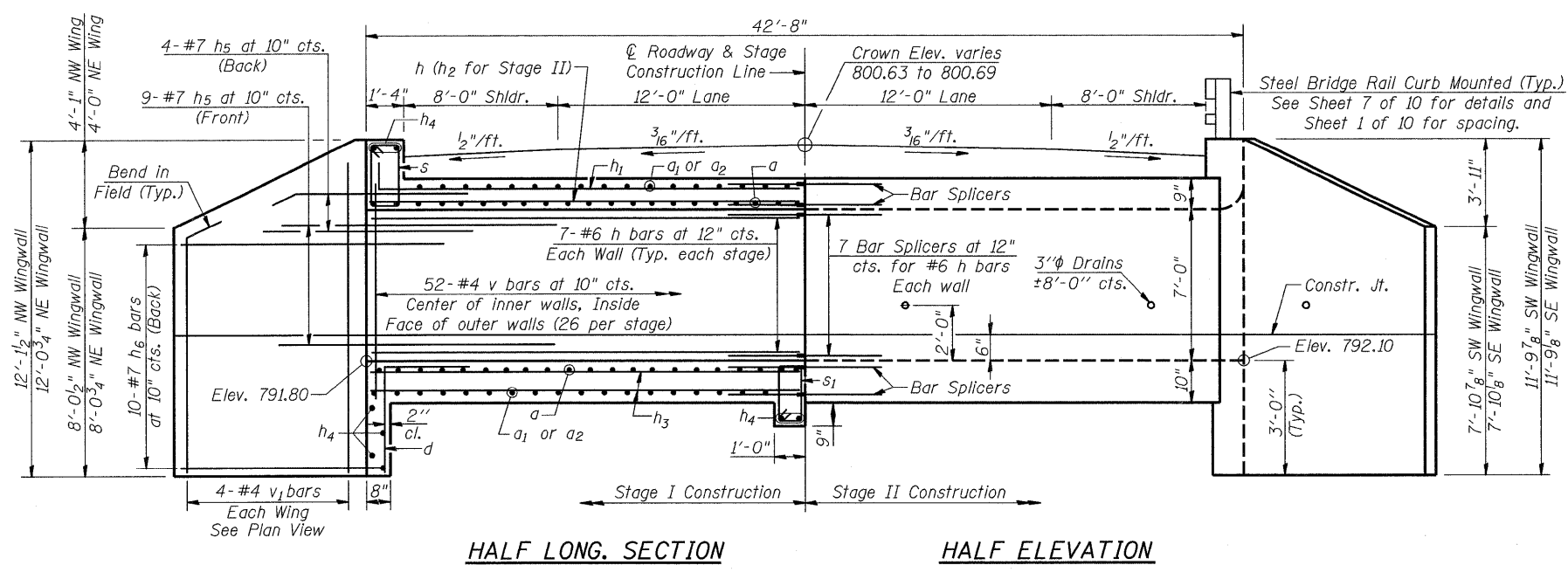


Contract No.: 62710

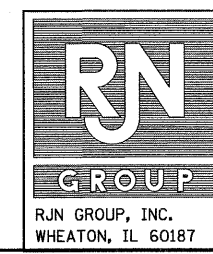
BILL OF MATERIAL

Bar	No.	Size	Length	Shape
a	120	#8	39'-10"	
a1	99	#8	30'-2"	
a2	88	#4	5'-3"	
d	76	#4	4'-6"	
h	107	#6	21'-0"	
h1	102	#6	22'-0"	
h2	51	#6	20'-9"	
h3	204	#4	21'-0"	
h4	12	#6	38'-0"	
h5	52	#7	8'-0"	
h6	40	#7	15'-6"	
h7	56	#6	3'-9"	
s	54	#5	6'-7"	
s1	39	#4	4'-9"	
s2	54	#5	5'-11"	
v	212	#4	8'-3"	
v1	16	#4	11'-5"	
Concrete Box Culverts			Cu. Yd.	160.8
Reinforcement Bars			Pound	37710
Bar Splicers			Each	232



NOTES

- A distance of half the length of the wingwall but not less than six feet of the barrel shall be poured monolithically with the wingwalls.
- Build top of headwalls parallel to grade line.
- Space s and s2 bars to miss rail post anchor rods.
- See Sheet 5 of 10 for cross section thru barrels, Section A-A, and Headwall Details.
- See Sheet 5 of 10 for additional bars at rail posts.



REVISIONS	
NAME	DATE

ILLINOIS DEPARTMENT OF TRANSPORTATION
 CULVERT DETAILS - I
 IL RTE. 68 OVER SPRING CREEK
 FAP RTE 343 - SECTION 631-A
 COOK COUNTY
 STATION 50+00
 STRUCTURE NO. 016-2811
 DRAWN BY BLB
 CHECKED BY WJV
 DATE 12/11/08