

STATE OF ILLINOIS  
DEPARTMENT OF TRANSPORTATION  
DIVISION OF HIGHWAYS

**PROPOSED  
HIGHWAY PLANS**

**FAU ROUTE 2775 (OAK PARK AVENUE)  
SOUTH BOULEVARD TO NORTH BOULEVARD  
VIADUCT ENHANCEMENT, SIDEWALK REPLACEMENT  
AND ROADWAY LIGHTING  
SECTION 06-00243-00-BR  
PROJECT NO. TE-0001(718)  
VILLAGE OF OAK PARK  
COOK COUNTY**

F.A.U. RTE.	SECTION	COUNTY	TOTAL SHEETS	SHEET NO.
2775	06-00243-00-BR	COOK	15	1
FED. ROAD DIST. NO.	ILLINOIS	CONTRACT NO. 63091		



**INDEX OF SHEETS**

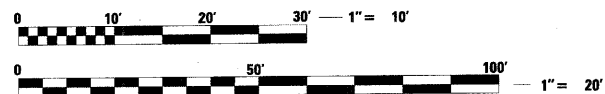
SHEET NO.	DESCRIPTION
1	COVER SHEET/INDEX OF SHEETS
2	GENERAL NOTES, HIGHWAY STANDARDS AND DISTRICT ONE DETAILS
3	SUMMARY OF QUANTITIES
4	OAK PARK AVENUE VIADUCT PLAN
5-10	ARCHITECTURAL PLAN SHEETS
11	STRUCTURAL SHEETS
12	DETAILS
13-15	DISTRICT DETAILS

**VILLAGE OF OAK PARK**

POLICE DEPARTMENT (708) 386-3800  
FIRE DEPARTMENT (708) 386-3300

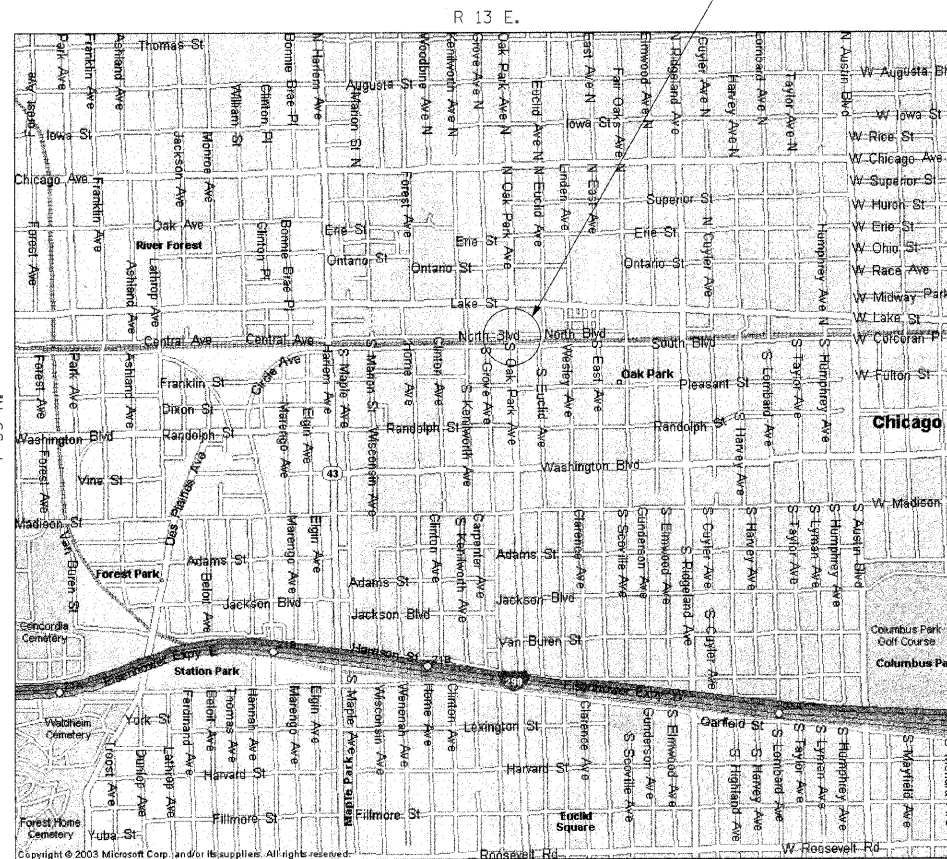
**POSTED SPEED LIMIT**

OAK PARK AVENUE 30 M.P.H.



FULL SIZE PLANS HAVE BEEN PREPARED USING STANDARD ENGINEERING SCALES. REDUCED SIZED PLANS WILL NOT CONFORM TO STANDARD SCALES. IN MAKING MEASUREMENTS ON REDUCED PLANS, THE ABOVE SCALES MAY BE USED.

**J.U.L.I.E.**  
JOINT UTILITY LOCATION INFORMATION FOR EXCAVATION  
1-800-892-0123  
OR 811

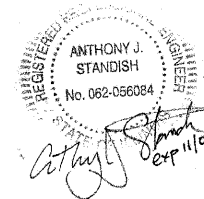


**OAK PARK TOWNSHIP**

**LOCATION MAP  
NO SCALE**

GROSS PROJECT LENGTH: 110 FEET = 0.021 MILES  
NET PROJECT LENGTH: 110 FEET = 0.021 MILES

**OAK PARK AVENUE VIADUCT  
STA. 82+31 TO STA. 83+41**



ALL EXCEPT ARCHITECTURAL PLANS



ELECTRICAL DETAILS



ARCHITECTURAL PLANS

STATE OF ILLINOIS  
DEPARTMENT OF TRANSPORTATION  
DIVISION OF HIGHWAYS

APPROVED Nov 20, 2008  
*[Signature]*  
62-39749 REGISTERED PROFESSIONAL ENGINEER ILLINOIS

PASSED JANUARY 7, 2009  
*[Signature]*  
DISTRICT 1 ENGINEER OF LOCAL ROADS AND STREETS

RELEASING FOR BID BASED ON LIMITED REVIEW JANUARY 8, 2009  
*[Signature]*  
DEPUTY DIRECTOR OF HIGHWAYS, REGION 1 ENGINEER

1170 SOUTH HOUBOLT ROAD  
JOLIET, ILLINOIS 60431  
(815) 744-4200  
ENGINEERS

**PRINTED BY THE AUTHORITY  
OF THE STATE OF ILLINOIS**

**CONTRACT NO. 63091**

FIELD ENGINEER: MARRILIN SOLOMON, P.E. (847) 705-4407  
PROJECT MANAGER: RAYMOND KLUMAPLEY (815) 744-4200  
STRAND ASSOCIATES INC.

**GENERAL NOTES**

1. THE LOCATION AND ELEVATION OF THE VARIOUS UNDERGROUND UTILITIES AS SHOWN ON THE PLANS ARE APPROXIMATE. THE CONTRACTOR SHALL USE SPECIAL CARE WHEN CONDUCTING CONSTRUCTION OPERATIONS NEAR THEM TO PREVENT DAMAGE.
2. 48 HOURS BEFORE STARTING ANY EXCAVATION, THE CONTRACTOR SHALL CALL J.U.L.I.E., THE LOCAL ONE CALL SYSTEM (800-892-0123 OR 811), AND THE VILLAGE OF OAK PARK PUBLIC WORKS (708-358-5700) FOR FIELD LOCATIONS OF VARIOUS UTILITIES AND NOTIFICATION TO RESPECTIVE UTILITY COMPANIES.
3. THE CONTRACTOR SHALL COORDINATE VARIOUS CONSTRUCTION ACTIVITIES WITH UTILITY COMPANIES.
4. WHERE SECTION OR SUBSECTION MONUMENTS ARE ENCOUNTERED, THE ENGINEER SHALL BE NOTIFIED BEFORE SUCH MONUMENTS ARE REMOVED. THE CONTRACTOR SHALL PROTECT AND CAREFULLY PRESERVE ALL PROPERTY MARKER MONUMENTS UNTIL THE OWNER, AN AUTHORIZED AGENT, OR LAND SURVEYOR HAS WITNESSED OR OTHERWISE REFERENCED THEIR LOCATION. THE CONTRACTOR WILL BE RESPONSIBLE FOR HAVING AN AUTHORIZED SURVEYOR REESTABLISH ANY SECTION OR SUB-SECTION MONUMENTS DISRUPTED BY HIS/HER OPERATIONS.
5. BARRICADES: ALL UNBALLASTED TYPE I AND TYPE II BARRICADES SHALL HAVE TWO (2) SANDBAGS ON THE BOTTOM RAIL. A TYPE III BARRICADE SHALL REQUIRE A MINIMUM OF FOUR (4) SANDBAGS.
6. THE CONTRACTOR SHALL TAKE ALL NECESSARY PRECAUTIONS FOR THE PROTECTION OF EXISTING PLANT MATERIAL FOR WHICH THE CONTRACT DOES NOT PROVIDE REMOVAL. THE PROTECTION OF EXISTING PLANT MATERIAL AND THE REPAIR OR REPLACEMENT OF EXISTING PLANT MATERIAL DAMAGED BY THE CONTRACTOR SHALL BE DONE IN ACCORDANCE WITH THE REQUIREMENTS OF SECTION 201 OF THE STANDARD SPECIFICATIONS.
7. CONTRACTOR SHALL TAKE CARE TO PROTECT EXISTING LANDSCAPING AT LOCATIONS NOT SHOWN IN THE PLANS TO BE REMOVED AND AS DIRECTED BY THE ENGINEER. LANDSCAPING TO BE PROTECTED THAT IS DAMAGED BY THE CONTRACTOR'S OPERATIONS SHALL BE REPLACED IN KIND AT HIS/HER EXPENSE.
8. ANY REFERENCE TO STANDARDS THROUGHOUT THE PLANS OR SPECIAL PROVISIONS SHALL BE INTERPRETED TO BE THE LATEST EDITION OF STANDARDS OF THE ILLINOIS DEPARTMENT OF TRANSPORTATION AND THE VILLAGE OF OAK PARK.
9. THE CONTRACTOR SHALL BE REQUIRED TO MAINTAIN PEDESTRIAN ACCESS AT ALL TIMES TO ALL PRIVATE AND COMMERCIAL PROPERTIES DURING THE CONSTRUCTION OF THIS PROJECT. ACCESS SHALL BE MAINTAINED AT ALL TIMES TO THE METRA STATION AT OAK PARK AVENUE.
10. THE VILLAGE OF OAK PARK WATER DEPARTMENT (708-445-3340 EXT. 3375) SHALL BE RESPONSIBLE FOR TURNING THE WATER MAIN VALVES ON AND OFF. THE CONTRACTOR IS NOT ALLOWED TO TURN THE OAK PARK OWNED WATER MAIN VALVES ON AND OFF. THE CONTRACTOR SHALL CONTACT THE VILLAGE OF OAK PARK FOR A WATER METER IF NECESSARY.

11. A PROTECTIVE COAT SHALL BE APPLIED TO ALL GUTTER FLAGS, FACE OF CURB AND CONCRETE DRIVEWAYS, ALLEY AND SIDEWALK IN ACCORDANCE WITH ARTICLE 408.23 OF THE STANDARD SPECIFICATIONS (INCIDENTAL).
12. MEMBRANE CURING COMPOUND SHALL BE APPLIED TO ALL FINISHED CONCRETE FLAT WORK AND CURB AND GUTTER. CURING OF PORTLAND CEMENT CONCRETE SHALL BE DONE IN ACCORDANCE WITH SECTION 1020.13 OF THE STANDARD SPECIFICATIONS FOR ROAD AND BRIDGE CONSTRUCTION IN ILLINOIS. IF MEMBRANE CURING COMPOUND IS CHOSEN AS THE METHOD OF CURING, THE MEMBRANE CURING COMPOUND USED SHALL BE COMPATIBLE WITH PROTECTIVE COAT.
13. SPECIAL ATTENTION IS DRAWN TO THE FACT THAT ARTICLE 105.06 OF THE STANDARD SPECIFICATION REQUIRE THE CONTRACTOR TO HAVE A COMPETENT SUPERINTENDENT ON THE PROJECT SITE AT ALL TIMES IRRESPECTIVE OF THE AMOUNT OF WORK SUBLET. THE SUPERINTENDENT SHALL BE CAPABLE OF READING AND UNDERSTANDING THE PLANS AND SPECIFICATIONS, SHALL HAVE FULL AUTHORITY TO EXECUTE ORDERS TO EXPEDITE THE PROJECT, AND SHALL BE RESPONSIBLE FOR SCHEDULING AND HAVE CONTROL OF ALL WORK AS THE AGENT OF THE GENERAL CONTRACTOR. FAILURE TO COMPLY WITH THIS PROVISION WILL RESULT IN A SUSPENSION OF WORK AS PROVIDED IN ARTICLE 108.09.
14. CONTRACTOR SHALL COORDINATE WITH ALL UTILITY COMPANIES SUCH AS BUT NOT LIMITED TO COMED, AT&T, AND GAS COMPANY FOR ADJUSTMENT OF THEIR STRUCTURES WITHIN THE PROJECT LIMIT.
15. THE CONTRACTOR SHALL SAW CUT THE EXISTING SIDEWALK AT THE BACK OF CURB. ANY DAMAGE TO THE CURB OR CURB AND GUTTER SHALL BE REPAIRED AT NO COST TO THE CONTRACT. SAW CUTTING SHALL BE INCIDENTAL TO THE CONTRACT.
16. A NOMINAL QUANTITY OF INLET FILTERS HAS BEEN PROVIDED TO PROTECT EXISTING DRAINAGE STRUCTURES WITHIN THE PROJECT AREA. THE ACTUAL NEED FOR INLET FILTERS SHALL BE DETERMINED IN THE FIELD BY THE ENGINEER.
17. FASTENERS SHALL BE ASTM A325, MECHANICALLY GALVANIZED BOLTS.
18. ALL STRUCTURAL STEEL SHALL BE ASTM A992 GRADE 50 (WIDE FLANGE SECTIONS) OR ASTM A36 (PLATES AND ANGLES) UNLESS OTHERWISE NOTED.
19. NO FIELD WELDING IS PERMITTED TO THE EXISTING RAILROAD STRUCTURE.
20. PLAN DIMENSIONS AND DETAILS RELATIVE TO EXISTING PLANS ARE SUBJECT TO NOMINAL CONSTRUCTION VARIATIONS. THE CONTRACTOR SHALL FIELD VERIFY EXISTING DIMENSIONS AND DETAILS AFFECTING NEW CONSTRUCTION AND MAKE NECESSARY APPROVED ADJUSTMENTS PRIOR TO CONSTRUCTION OR ORDERING OF MATERIALS. SUCH VARIATIONS SHALL NOT BE CAUSE FOR ADDITIONAL COMPENSATION FOR A CHANGE IN SCOPE OF THE WORK, HOWEVER, THE CONTRACTOR WILL BE PAID FOR THE QUANTITY ACTUALLY FURNISHED AT THE UNIT PRICE BID FOR THE WORK.
21. CONTRACTOR SHALL COORDINATE WITH UNION PACIFIC RAILROAD, METRA, AND CTA FOR ALL WORK WITHIN RAILROAD R.O.W.
22. THE CONTRACTOR SHALL REMOVE AND STORE ITEMS MOUNTED TO THE EXISTING STEEL VIADUCT THAT SHALL BE IMPACTED BY THE PROPOSED WORK. THE CONTRACTOR SHALL REINSTALL THE ITEMS IMMEDIATELY FOLLOWING THE COMPLETION OF THE WORK.
23. THE CONTRACTOR SHALL NOTIFY THE RAILROAD COMPANIES PRIOR TO THE START OF WORK. THE CONTRACTOR IS RESPONSIBLE FOR MEETING ALL THE REQUIREMENTS OF THE RAILROAD COMPANIES. BELOW ARE THE CONTACTS:

COMPANY: CHICAGO TRANSIT AUTHORITY (CTA)  
 CONTACT: DAVID CAPP (MANAGER, STRUCTURE MAINTENANCE)  
 TELEPHONE: (773) 722-4130  
 FAX: (773) 722-4105

COMPANY: UNION PACIFIC RAILROAD  
 CONTACT: BYRON THIESSE (MANAGER, STRUCTURAL PROJECTS)  
 TELEPHONE: (312) 496-4729  
 FAX: (402) 233-2893

**HIGHWAY STANDARDS**

- 000001-05 STANDARD SYMBOLS, ABBREVIATIONS AND PATTERNS
- 280001-04 TEMPORARY EROSION CONTROL SYSTEMS
- 424001-05 CURB RAMPS FOR SIDEWALKS
- 701001-02 OFF-RD OPERATIONS, 2L, 2W, MORE THAN 15' (4.5m) AWAY
- 701006-03 OFF-RD OPERATIONS, 2L, 2W, 15' (4.5m) TO 24" (600mm) FROM PAVEMENT EDGE
- 701101-02 OFF-RD OPERATIONS, MULTILANE, 15' (4.5m) TO 24" (600mm) FROM PAVEMENT EDGE
- 701106-02 OFF-RD OPERATIONS, MULTILANE, MORE THAN 15' (4.5m) AWAY
- 701601-06 URBAN LANE CLOSURE MULTILANE, 1W OR 2W WITH NONTRAVERSABLE MEDIAN
- 701801-04 LANE CLOSURE MULTILANE 1W OR 2W CROSSWALK OR SIDEWALK CLOSURE
- 701901-01 TRAFFIC CONTROL DEVICES

**DISTRICT STANDARDS**

- BE-220 ELECTRIC SERVICE INSTALLATION AERIAL, REMOTE DISCONNECT
- BE-702 MISC. ELECTRICAL DETAILS SHEET A
- TC-10 TRAFFIC CONTROL AND PROTECTION FOR SIDE ROADS, INTERSECTIONS AND DRIVEWAYS

FILE NAME = S:\JDL\6700-6759\6704\087\Notes\Oak Park Avenue\gennotes.dgn



USER NAME = kindras	DESIGNED -	REVISED -
PLOT SCALE = 1/8" = 1'-0"	DRAWN -	REVISED -
PLOT DATE = 1/5/2009	CHECKED -	REVISED -
	DATE	REVISED -

**STATE OF ILLINOIS  
DEPARTMENT OF TRANSPORTATION**

**GENERAL NOTES, HIGHWAY STANDARDS AND  
DISTRICT ONE DETAILS**

SCALE: AS SHOWN SHEET NO. OF SHEETS STA. TO STA.

F.A. RTE.	SECTION	COUNTY	TOTAL SHEETS	SHEET NO.
2775	06-00243-00-BR	COOK	14	2
FED. ROAD DIST. NO.			ILLINOIS FED. AID PROJECT	
			CONTRACT NO. 63091	

SUMMARY OF QUANTITIES					ROADWAY	LIGHTING	
	CODE NO.	DESCRIPTION	UNIT	TOTALS	Y003 QUANTITY	Y030-1E QUANTITY	QUANTITY
++	20201200	REMOVAL AND DISPOSAL OF UNSUITABLE MATERIAL	CU YD	50	50		
	28000510	INLET FILTERS	EACH	4	4		
	42400800	DETECTABLE WARNINGS	SQ FT	24	24		
	44000600	SIDEWALK REMOVAL	SQ FT	340	340		
	67100100	MOBILIZATION	L SUM	1	1		
++	70101800	TRAFFIC CONTROL AND PROTECTION (SPECIAL)	L SUM	1	1		
++	80400105	ELECTRIC SERVICE INSTALLATION, SPECIAL	EACH	1		1	
++	80400200	ELECTRIC UTILITY SERVICE CONNECTION	L SUM	1		1	
	81100500	CONDUIT ATTACHED TO STRUCTURE, 1.5" DIA., PVC COATED GALVANIZED STEEL	FOOT	580		580	
	81300550	JUNCTION BOX, STAINLESS STEEL, ATTACHED TO STRUCTURE, 12" X 12" X 6"	EACH	3		3	
	81700115	ELECTRIC CABLE IN CONDUIT, 600V (EPR-TYPE RHW) 1/C NO. 8	FOOT	3,500		3,500	
	84200600	REMOVAL OF EXISTING LIGHTING UNIT, NO SALVAGE	EACH	10		10	
++	X0323426	SEDIMENT CONTROL, DRAINAGE STRUCTURE INLET FILTER CLEANING	EACH	4	4		
++	X0325713	GROUND ROD	EACH	1		1	
++ *	50600300	CLEANING AND PAINTING <i>STEEL BRIDGE</i>	L SUM	1	1		
++	XX000667	SUB-BASE GRANULAR MATERIAL, TYPE B 2"	SQ YD	200	200		
++	XX001532	PROJECT SIGN	EACH	2	2		
	XX001621	BRICK PAVER REMOVAL	SQ FT	160	160		
++	XX002065	LIGHTING UNIT COMPLETE	EACH	14		14	
++	XX004467	BRICK PAVER SIDEWALK ON RIGID BASE	SQ FT	500	500		
++	XX005642	GATEWAY MONUMENT SIGN COMPLETE	EACH	16	16		
++	Z0013798	CONSTRUCTION LAYOUT	L SUM	1	1		
++	Z0048665	RAILROAD PROTECTIVE LIABILITY INSURANCE	L SUM	1	1		
++ Δ	Z0078600	TRAINEES	HOUR	500	500		
++	XX007788	ORNAMENTAL METAL PANEL	EACH	26	26		

\* INDICATES SPECIALTY ITEMS

++ INDICATES SPECIAL PROVISION

Δ **Y080**

FILE NAME = S:\JDL\6700-6799\6784\307\Micros\Oak park Avenue\summary of quantities.dgn



USER NAME = kindres	DESIGNED -	REVISED -
PLOT SCALE = 1/8" = 1'-0"	DRAWN -	REVISED -
PLOT DATE = 1/5/2004	CHECKED -	REVISED -
	DATE -	REVISED -

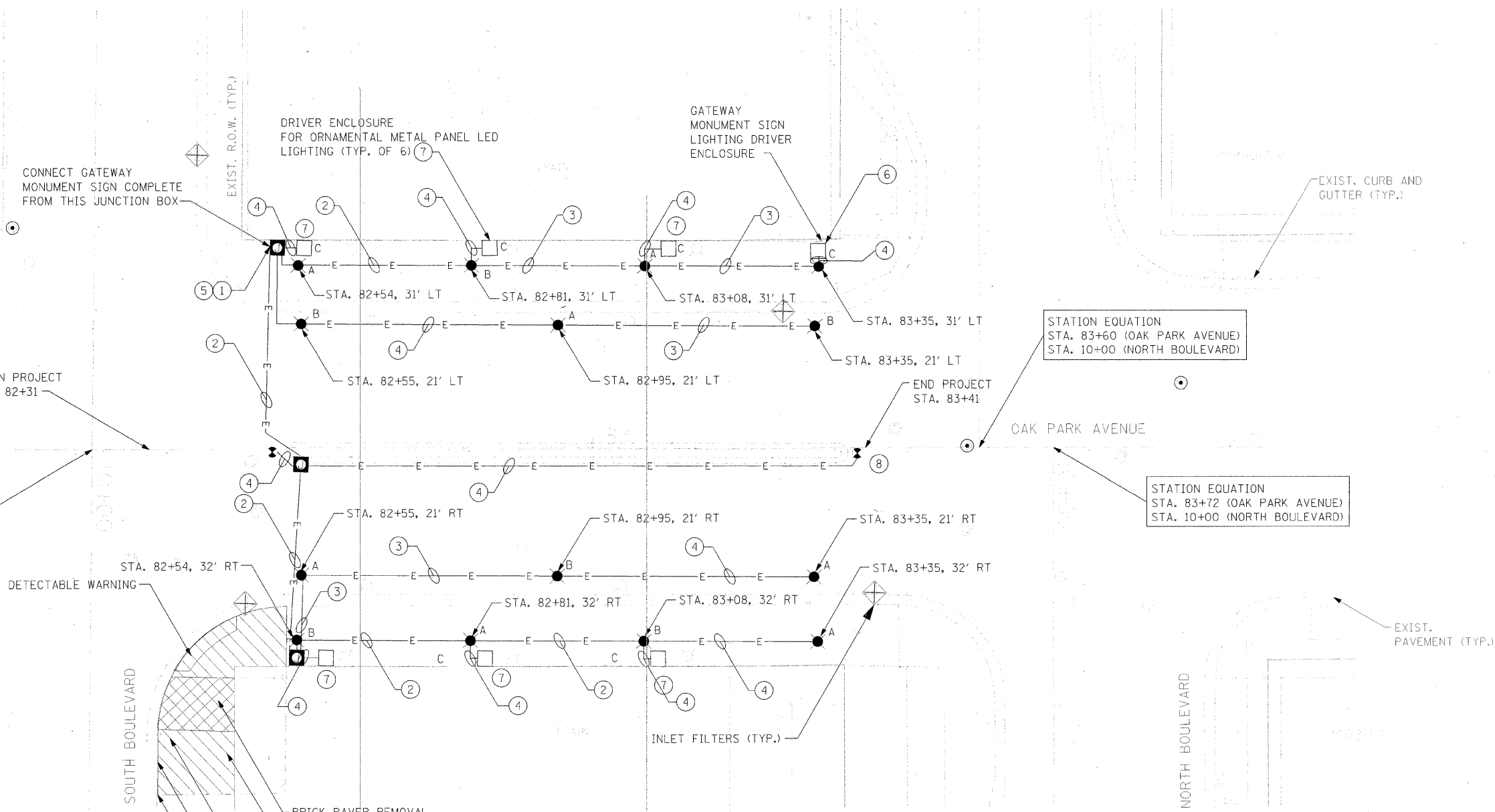
**STATE OF ILLINOIS  
DEPARTMENT OF TRANSPORTATION**

SUMMARY OF QUANTITIES			
SCALE: AS SHOWN	SHEET NO.	OF SHEETS	STA. TO STA.

F.A. RTE. 2775	SECTION 06-00243-00-BR	COUNTY COOK	TOTAL SHEETS 14	SHEET NO. 3
FED. ROAD DIST. NO. ILLINOIS FED. AID PROJECT CONTRACT NO. 63091				

**GENERAL NOTES:**

1. ANY REFERENCE TO A STANDARD IN THESE PLANS SHALL BE TAKEN TO MEAN THE LATEST EDITION OF NES, IES, & IDOT STANDARDS.
2. ALL NEW CONDUIT SHALL BE PVC-COATED RIGID GALVANIZED STEEL. CONDUIT MOUNTED TO CONCRETE SURFACES SHALL UTILIZE STAINLESS STEEL HARDWARE.
3. UNDERPASS LUMINAIRES SHALL BE WALL-MOUNTED 9.5 FEET ABOVE PAVEMENT SURFACE.
4. JUNCTION BOXES SHALL BE MOUNTED TO CONCRETE WALL WITH STAINLESS STEEL UNISTRUT AND HARDWARE FOR MOUNTING. BOXES SHALL NOT BE MOUNTED DIRECTLY TO CONCRETE SURFACE.
5. ALL LUMINAIRES SHALL BE 150 WATTS, METAL HALIDE, DISTRIBUTION TYPE IV, NO CUTOFF, AT 240 V.
6. SPLICING OF CONDUCTORS SHALL ONLY BE ALLOWED IN THE LUMINAIRES OR IN JUNCTION BOXES.
7. REMOVAL OF EXISTING LUMINAIRE INCLUDES REMOVAL OF ALL ASSOCIATED CONDUIT, WIRE, JUNCTION BOXES, HARDWARE, AND APPURTENANT MATERIALS AS NOTED IN SECTION 842.03 OF THE STANDARD SPECIFICATIONS.
8. THE CONTRACTOR SHALL PROTECT THE EXISTING RAILING. ANY DAMAGE TO THE RAILING FROM THE CONTRACTOR'S OPERATIONS SHALL BE REPAIRED OR REPLACED AT NO COST TO THE CONTRACT.



STATION EQUATION  
STA. 82+22 (OAK PARK AVENUE)  
STA. 10+00 (SOUTH BOULEVARD)

STATION EQUATION  
STA. 83+60 (OAK PARK AVENUE)  
STA. 10+00 (NORTH BOULEVARD)

STATION EQUATION  
STA. 83+72 (OAK PARK AVENUE)  
STA. 10+00 (NORTH BOULEVARD)

**LEGEND:**

- X LIGHTING UNIT COMPLETE (X = CIRCUIT DESIGNATION)
- ⊠ JUNCTION BOX, STAINLESS STEEL, ATTACHED TO STRUCTURE, 12"x12"x6"
- E — CONDUIT ATTACHED TO STRUCTURE, 1 1/2" DIA., PVC COATED GALVANIZED STEEL
- ◻ REMOVAL OF EXISTING LUMINAIRE, NO SALVAGE
- ▲ EXISTING HANDHOLE
- ⊙ EXISTING FLASHING BEACON
- ⓧ KEY NOTE

LOAD TABLE		
CIRCUIT	RED PHASE LOAD (WATTS)	BLACK PHASE LOAD (WATTS)
A	700	700
B	700	700
C	1200	
TOTALS	2600	1400

**KEY NOTES:**

1. INTERCEPT EXISTING LIGHTING AND FLASHING BEACON CIRCUITS AT EXISTING CONDUIT BELOW PROPOSED JUNCTION BOX
2. ELECTRIC CABLE IN CONDUIT, 600V (EPR TYPE RHW), 7-1/C NO. 8
3. ELECTRIC CABLE IN CONDUIT, 600V (EPR TYPE RHW), 5-1/C NO. 8
4. ELECTRIC CABLE IN CONDUIT, 600V (EPR TYPE RHW) 3-1/C NO. 8
5. EXISTING LIGHTING CONTROLLER IS LOCATED AT THE NORTHEAST CORNER OF OAK PARK AVENUE AND PLEASANT STREET, APPROXIMATELY ONE BLOCK SOUTH OF SOUTH BOULEVARD.
6. INSTALLATION OF DRIVER ENCLOSURES (2 TOTAL), CONNECTIONS TO GATEWAY MONUMENT SIGN ASSEMBLY LED LIGHT BARS (6 TOTAL) SHALL BE INCIDENTAL TO JUNCTION BOX INSTALLATION.
7. INSTALLATION OF DRIVER ENCLOSURES (6 TOTAL), CONNECTIONS TO ORNAMENTAL METAL PANEL LED LIGHT BARS (26 TOTAL), AND EXISTING FLASHING BEACONS SHALL BE INCIDENTAL TO CONDUIT INSTALLATION.
8. RECONNECT EXISTING FLASHING BEACONS (2 TOTAL) TO NEW WIRING.

FILE NAME: S:\V\15720-6799\6784\07\Main\os\Oak\_park\_Avenue\Sheets\North\3-sparkldgn



USER NAME = kndras  
DESIGNED -  
DRAWN -  
PLOT SCALE = 9.4444 1/16 IN.  
CHECKED -  
PLOT DATE = 1/5/2009  
DATE -

DESIGNED -  
REVISED -  
CHECKED -  
REVISIED -  
DATE -  
REVISED -

**STATE OF ILLINOIS  
DEPARTMENT OF TRANSPORTATION**

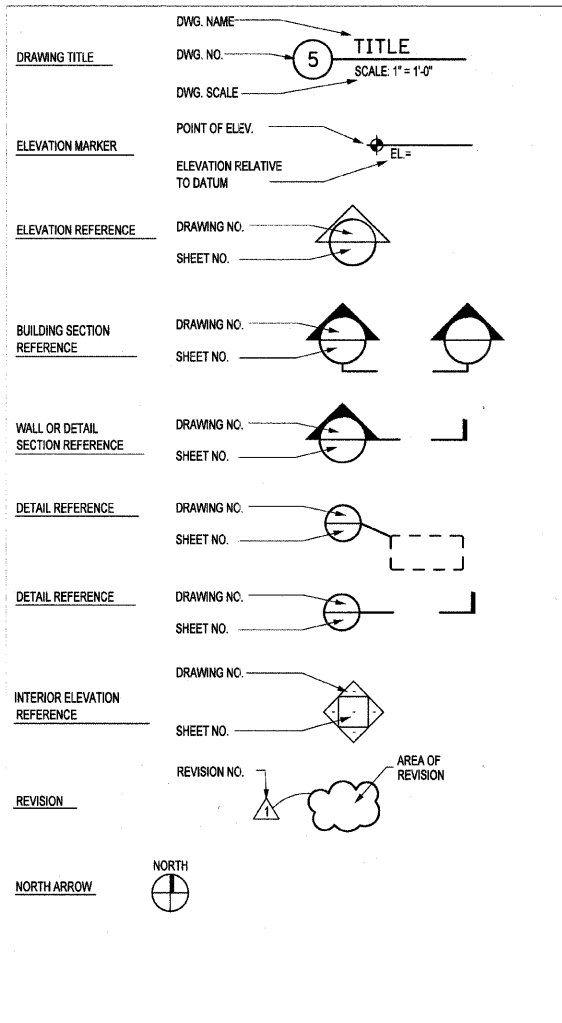
**OAK PARK AVENUE VIADUCT PLAN**

SCALE: AS SHOWN SHEET NO. OF SHEETS STA. TO STA.

F.A. RTE.	SECTION	COUNTY	TOTAL SHEETS	SHEET NO.
2775	06-00243-00-BR	COOK	14	4
FED. ROAD DIST. NO.			ILLINOIS FED. AID PROJECT	
			CONTRACT NO. 63091	

	BRICK
	CMU MASONRY
	GRAVEL
	CAST-IN-PLACE CONCRETE
	EARTH
	RIGID INSULATION
	PRECAST CONCRETE

**MATERIALS KEY**



**SYMBOLS**

AB	ANCHOR BOLTS	EXIST	EXISTING	MACH	MACHINE	RE	REGARDING
ACT	ACOUSTICAL CEILING TILE	EXP	EXPOSED	MAINT	MAINTENANCE	REF	REFER TO
ADA	AMERICANS WITH DISABILITIES ACT	EXPN	EXPANSION	MAS	MASONRY	REINF	REINFORCE (ED, ING, MENT)
AFF	ABOVE FINISH FLOOR	EXT	EXTERIOR	MATL	MATERIAL	RES	REQUIRED
ALT	ALTERNATE	EXTR	EXTRUDED	MAX	MAXIMUM	REC'D	REQUIRED
ALUM	ALUMINUM	FA	FIRE ALARM	MECH	MECHANICAL	REV	REVERSE
APPROX	APPROXIMATE (LY)	FAAP	FIRE ALARM ANNUNCIATOR PANEL	MED	MEDIUM	RM	ROOM
AR	AREA OF REFUGE	FD	FLOOR DRAIN	MEMB	MEMBRANE	RO	ROUGH OPENING
ARCH	ARCHITECT (URAL)	FDC	FIRE DEPARTMENT STANDPIPE	MFR	MANUFACTURE (ER)	RR	RAILROAD
ASSY	ASSEMBLY	FDN	FOUNDATION	MH	MANHOLE	RSL	RESILIENT BASEBOARD
AUX	AUXILIARY	FE	FIRE EXTINGUISHER	MIN	MINIMUM	SAN	SANITARY
AR	AREA OF REFUGE	FEC	FIRE HOSE CABINET	MISC	MISCELLANEOUS	SC	SOLID CORE
@	AT	FFE	FINISH FLOOR ELEVATION	MO	MASONRY OPENING	SCH	SCHEDULE
B/	BOTTOM OF BOARD	FIN	FINISH (ED)	MP	METAL PANEL	SD	SMOKE DETECTOR
BD	BOARD	FIXT	FIXTURE	MS	MOP SINK	SDMG	SIDING
BITUM	BITUMINOUS	FL	FLUSH	MTD	MOUNTED	SEAL	SEALER
BLDG	BUILDING	FLR	FLOOR	MTL	METAL	SECT	SECTION
BLK	BLOCK (WOOD BLOCKING)	FLR	FLOOR	MULL	MULLION	SGFT	STRUCT. GLAZED FACE TILE
BTM	BOTTOM	FLUOR	FLUORESCENT	N	NORTH	SHT	SHEET
BR	BRICK	FR	FIRE RESISTANT	NA	NOT APPLICABLE	SHTHG	SHEATHING
BTWN	BETWEEN	FRT	FIRE RETARDANT TREATED	NIC	NOT IN CONTRACT	SIM	SIMILAR
C	CHANNEL SHAPE	FT	FEET (FOOT)	NOM	NOMINAL	SL	SLOPE
C/C	CENTER TO CENTER	FTG	FOOTING	NTS	NOT TO SCALE	SPEC	SPECIFICATION
CEM	CEMENTITIOUS	FVC	FIRE VALVE CABINET	OV	OVERALL	SPKR	SPEAKER
CIP	CAST-IN-PLACE CONCRETE	GA	GALUZE	OC	ON CENTER	SQ	SQUARE
CIRC	CIRCULATION	GALV	GALVANIZE (ED)	OD	OUTSIDE DIAMETER	SS	STAINLESS STEEL
CJ	CONTROL JOINT	GC	GENERAL CONTRACTOR	OF	OFFICE	STD	STANDARD
CL	CENTER LINE	GL	GLASS/GLAZED	OH	OVERHEAD	STL	STEEL
CLG	CEILING	GLAM	GLUE LAMINATED LUMBER	OPNG	OPENING	STOR	STORAGE
CLOS	CLOSET	GR	GUARD RAIL	OPP	OPPOSITE	STR	STAIR
CLR	CLEAR(ANCE)	GRD	GRADE	OPPH	OPPOSITE HAND	STRUCT	STRUCTURE (AL)
CMU	CONCRETE MASONRY UNIT	GRND	GROUND	PART	PARTIAL	ST.SM	STANDING SEAM
CO	CLEAN OUT	GRP	GROUP	PARTN	PARTITION	SUSP	SUSPENDED
COL	COLUMN	GWB	GYPSUM WALLBOARD	PC	PRECAST CONCRETE	SYM	SYMBOL
COMP	COMPOSITE	GYP	GYPSUM	PCF	POUNDS PER CUBIC FOOT	SYS	SYSTEM
CONC	CONCRETE	HB	HINGE BRICK	PCP	PRECAST PAVERS	TRD	TREAD
CONN	CONNECT (ED, ING, ION)	HC	HOLLOW CORE	PED	PEDESTRIAN	T/	TOP OF
CONN	CONSTRUCTION	HD	HEAD	PERF	PERFORATED	T & G	TONGUE AND GROOVE
CONT	CONTINUOUS	HDW	HARDWARE	PERP	PERPENDICULAR	TD	TRENCH DRAIN
CONTR	CONTRACTOR	HDWD	HARDWOOD	PKG	PARKING	TEL	TELEPHONE
COORD	COORDINATE (ED)	HGT	HEIGHT	PL	PLATE	THK	THICK / THICKNESS
CT	CLAY TILE	HM	HOLLOW METAL	PLAM	PLASTIC LAMINATE	TT	TRAFFIC TOPPING
CTR	CENTER	HOR	HORIZONTAL	PLBG	PLUMBING	TYP	TYPICAL
CU	CUBIC	HP	HIGH POINT	PLSTR	PLASTER	UH	UNIT HEATER
DBL	DOUBLE	H.R.	HAND RAIL	PLYWD	PLYWOOD	UL	UNDERWRITERS LABORATORIES, INC.
DET	DETAIL	HRS	HOURS (FIRE RESISTANT RATING)	PNL	PANEL	UNDRCT	UNDERCUT
DF	DRINKING FOUNTAIN	HTG	HEATING	PR	PAIR	U.N.O.	UNLESS NOTED OTHERWISE
DIA	DIAMETER	HTR	HEATER	PREFAB	PREFABRICATE	U.P.	UNION PACIFIC RAILROAD
DIAG	DIAGONAL	HV	HIGH VOLTAGE	PSF	POUNDS PER SQUARE FOOT	VAR	VARIES
DIFF	DIFFUSER	ID	INSIDE DIAMETER	PSI	POUNDS PER SQUARE INCH	VCT	VINTL COMPOSITION TILE
DN	DOWN	INFO	INFORMATION	PT	PAINT	VERT	VERTICAL
DN	DOWN	INSUL	INSULATION	PTD	PAINTED	VF	VERIFY IN FIELD
DN	DOWN	IN	INCH (ES)	PVC	POLYVINYLCHLORIDE	VTR	VENT THROUGH ROOF
DN	DOWN	INCL	INCLUDED (ING)	PVG	PAVING	VIN	VINYL
DN	DOWN	INT	INTERIOR	PVMT	PAVEMENT	W	WIDE FLANGE SHAPE
DPFG	DAMP-PROOFING	JST	JOIST	PVR	PAVER	W/	WITH
DR	DOOR	JT	JOINT	QTY	QUANTITY	W/O	WITHOUT
DS	DOWNSPOUT	KSF	KIPS PER SQUARE FOOT	RDR	RISER	WC	WATER CLOSET
DWG	DRAWING	KSI	KIPS PER SQUARE INCH	RB	RESILIENT BASE	WD	WOOD
EA	EACH	LAM	LAMINATED	RBC	RUBBERIZED BITUMINOUS	WDW	WINDOW
EJ	EXPANSION JOINT	LAND	LANDING	RCP	COMPOUND	WP	WORKING POINT
EL	ELEVATION	LAV	LAVATORY	RFD	REFLECTED CEILING PLAN	WT	WEIGHT
ELEC	ELECTRICAL	LB	POUND (S)	RD	ROOF DRAIN	WNR	WOOD VENEER
ELEV	ELEVATION	LL	LIVE LOAD	RECYC	RECYCLE	WWF	WELDED WIRE FABRIC
ENCLOSURE	ENCLOSURE	LOB	LOBBY	RECEPT	RECEPTACLE	YD	YARD
ENTR	ENTRANCE	LP	LOW POINT				
EQ	EQUAL	LTWT	LIGHTWEIGHT				
EQUIP	EQUIPMENT						
ETC	ETCETERA						
EMC	ELECTRIC WATER COOLER						
EXH	EXHAUST						

**ABBREVIATIONS**

SHEET #	DESCRIPTION
G1.0	ABBREVIATIONS, SYMBOLS, DRAWING LIST
A1.0	OAK PARK AVE. VIADUCT PLAN
A1.1	OAK PARK AVE.-VIADUCT ELEVATIONS
A1.2	OAK PARK AVE.-VIADUCT ELEVATIONS
A2.0	ORNAMENTAL METAL PANEL ENLARGED PLANS AND DETAILS
A2.1	GATEWAY MONUMENT SIGN DETAILS

**DRAWING LIST**



USER NAME = #USER#	DESIGNED AT	REVISED -
	DRAWN EB	REVISED -
PLOT SCALE = #SCALE#	CHECKED DK	REVISED -
PLOT DATE = #DATE#	DATE 11-18-2008	REVISED -

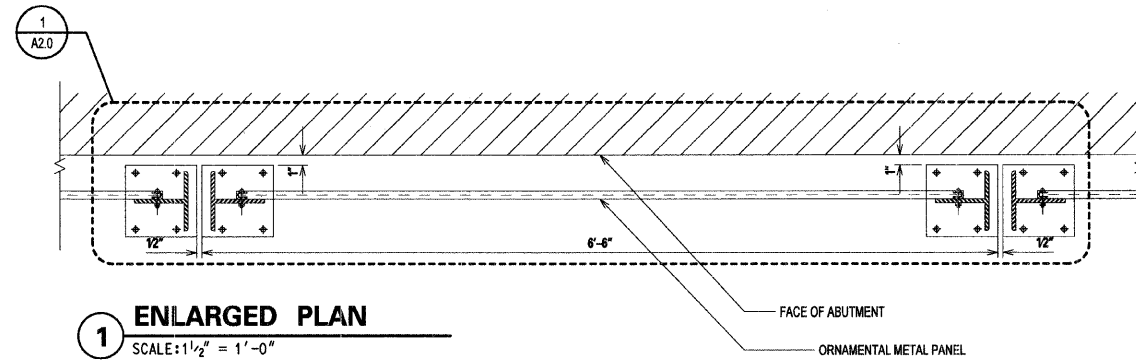
STATE OF ILLINOIS  
DEPARTMENT OF TRANSPORTATION

ABBREVIATIONS, SYMBOLS, DRAWING LIST

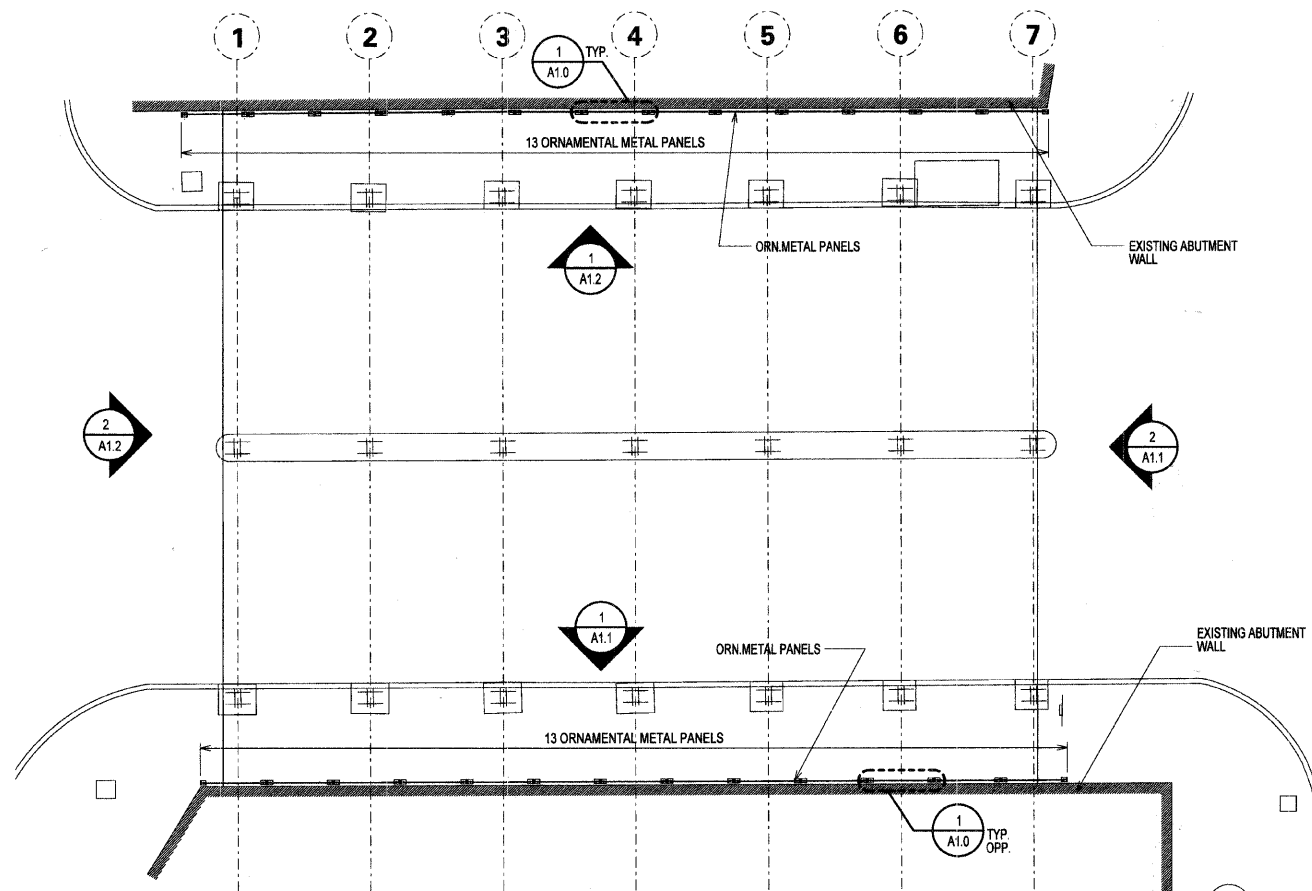
SCALE: AS SHOWN SHEET NO. OF SHEETS STA. TO STA.

F.A. RTE.	SECTION	COUNTY	TOTAL SHEETS	SHEET NO.
2775	06-00243-00-BR	COOK	14	5
FED. ROAD DIST. NO.			ILLINOIS FED. AID PROJECT	
			CONTRACT NO. 63091	

SHEET G1.0



**1 ENLARGED PLAN**  
SCALE: 1 1/2" = 1'-0"



**2 OAK PARK AVE - PLAN AT SIDEWALK LEVEL**  
SCALE: 1/8" = 1'-0"

BILL OF MATERIALS		
ITEM	UNIT	QUANTITY
ORNAMENTAL METAL PANEL	EACH	26
CLEANING AND PAINTING EXISTING STRUCTURES	L SUM (SF)	3300
GATEWAY MONUMENT SIGN COMPLETE*	EACH	16

\*GATEWAY MONUMENT SIGN COMPLETE - PANELS CONSIST OF (16) LED FIXTURES  
\*REFER TO ELECTRICAL DRAWINGS FOR DETAILS AND QUANTITIES.  
\*GATEWAY MONUMENT SIGN COMPLETE - PANELS CONSIST OF (16) PANELS:  
(4) TYPE A, (12) TYPE B - REFER TO SHEET A 2.1 FOR DETAILS AND SIZES.



USER NAME = #USER#	DESIGNED AT	REVISED -
PLOT SCALE = #SCALE#	DRAWN EB	REVISED -
PLOT DATE = #DATE#	CHECKED DK	REVISED -
	DATE 11-18-2008	REVISED -

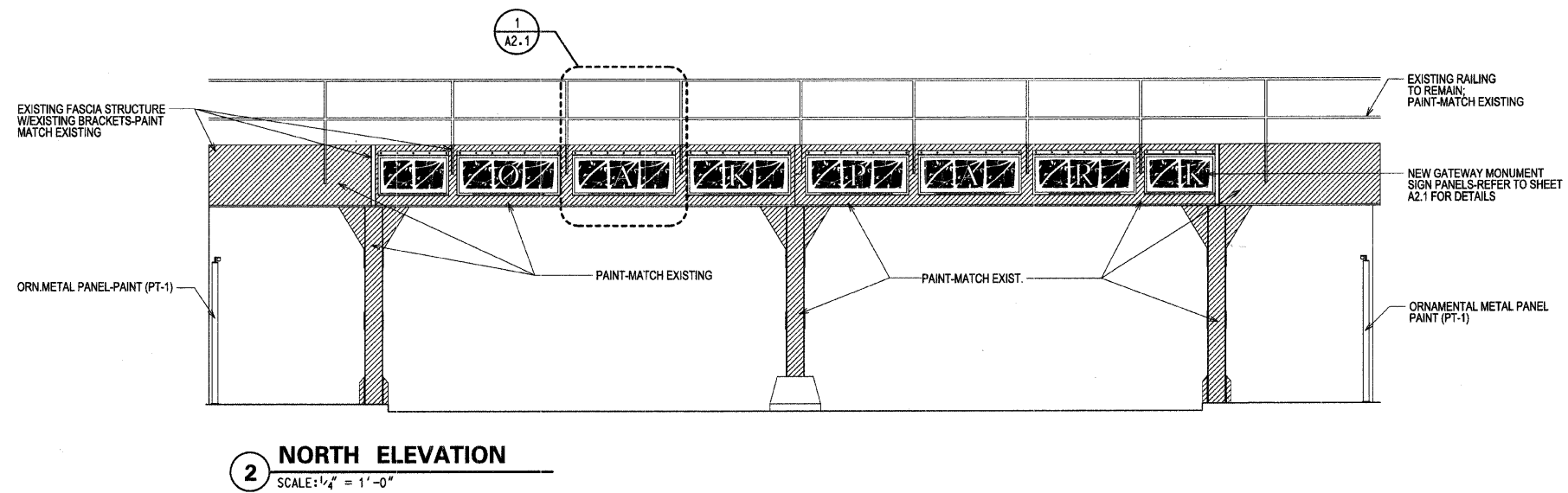
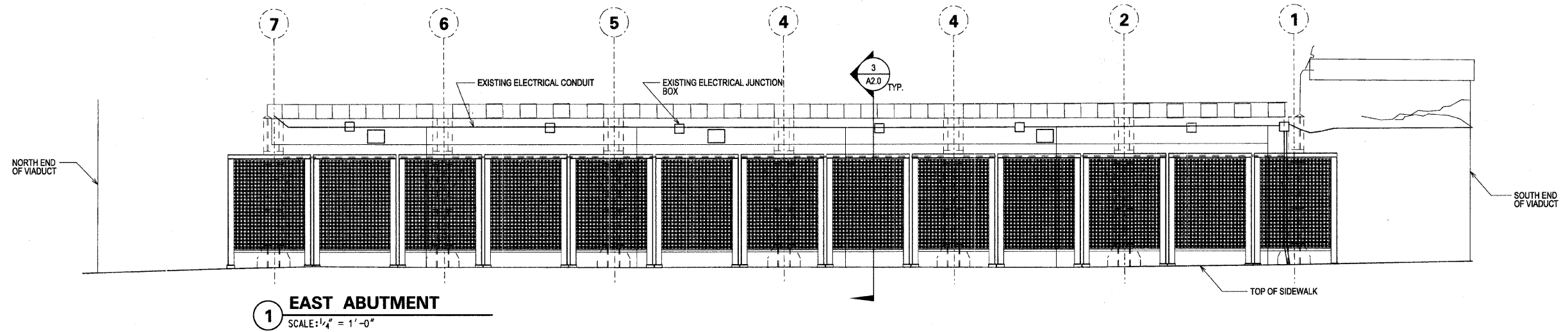
STATE OF ILLINOIS  
DEPARTMENT OF TRANSPORTATION

OAK PARK AVE. VIADUCT PLAN

SCALE: AS SHOWN SHEET NO. OF SHEETS STA. TO STA.

F.A. RTE.	SECTION	COUNTY	TOTAL SHEETS	SHEET NO.
2775	06-00243-00-BR	COOK	14	6
FED. ROAD DIST. NO. ILLINOIS FED. AID PROJECT			CONTRACT NO. 63091	

SHEET A1.0



- NOTES:
1. ALL DIMENSIONS, INCLUDING BUT NOT LIMITED TO EXISTING FASCIA STRUCTURE, BRACKET SPACING AND RAILING SPACING TO BE FIELD VERIFIED.
  2. EACH GATEWAY MONUMENT SIGN PANEL TO BE CENTERED BETWEEN THE BRACKETS OF THE EXISTING FASCIA STRUCTURE.
  3. FOR REMOVAL OF EXISTING ELEC. CONDUITS, JUNCTION BOXES AND INSTALLATION OF NEW, REFER TO ELECTRICAL DRAWINGS.

LEGEND:  
 EXISTING SURFACE TO BE PAINTED



USER NAME = #USER#	DESIGNED <i>AT</i>	REVISED -
	DRAWN <i>EB</i>	REVISED -
PLOT SCALE = #SCALE#	CHECKED <i>DK</i>	REVISED -
PLOT DATE = #DATE#	DATE <i>11-18-2008</i>	REVISED -

STATE OF ILLINOIS  
DEPARTMENT OF TRANSPORTATION

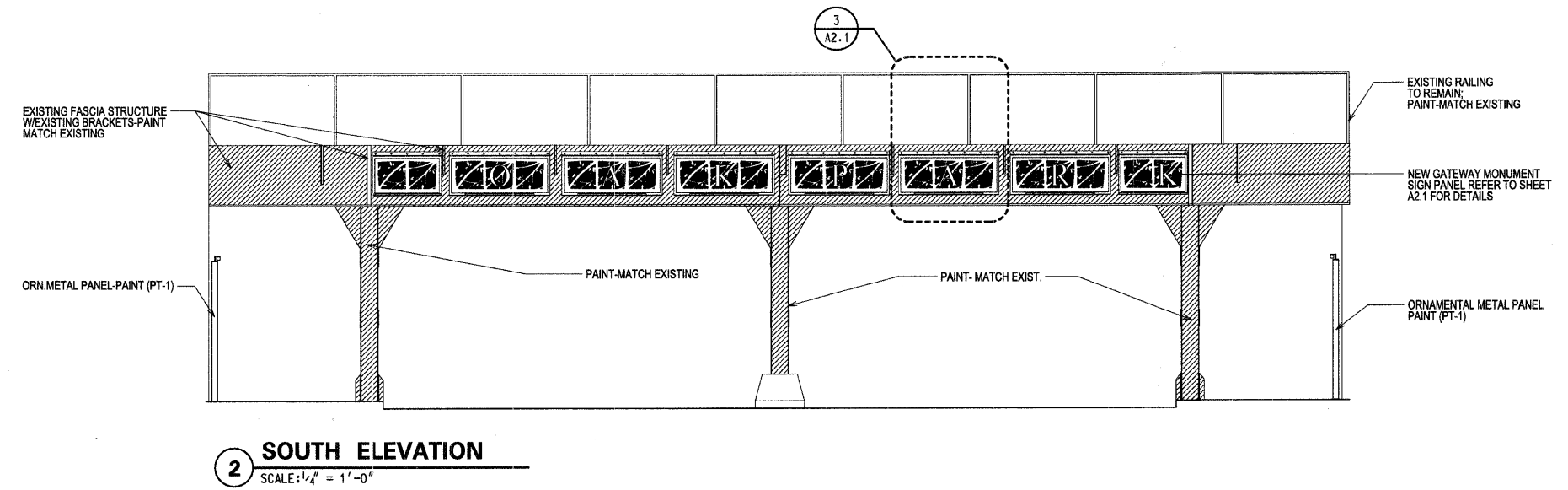
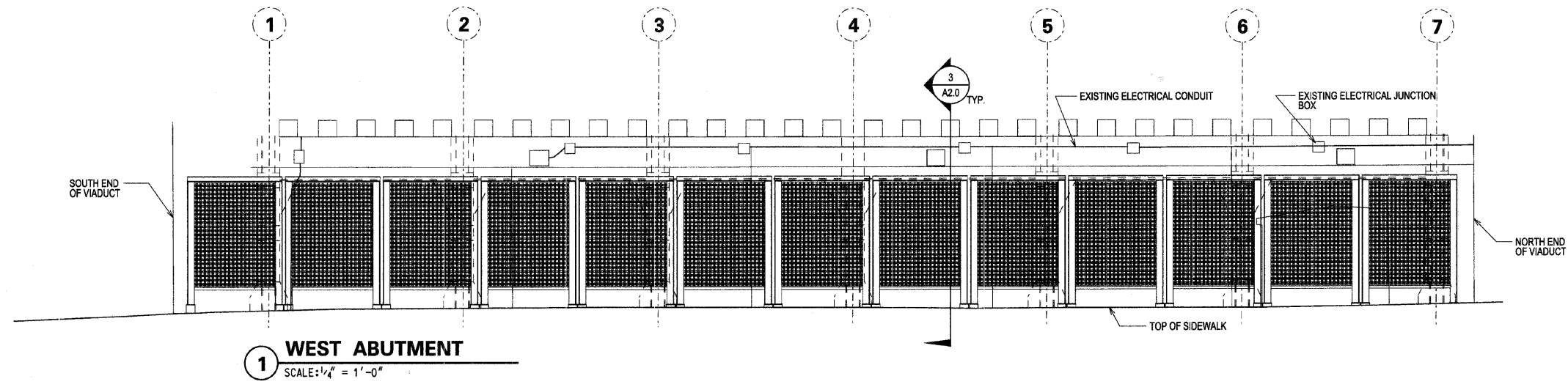
OAK PARK AVE.-VIADUCT ELEVATIONS

SCALE: AS SHOWN SHEET NO. OF SHEETS STA. TO STA.

F.A. RTE.	SECTION	COUNTY	TOTAL SHEETS	SHEET NO.
2775	06-00243-00-BR	COOK	14	7
CONTRACT NO. 63091				
FED. ROAD DIST. NO. ILLINOIS FED. AID PROJECT				

SHEET A1.1

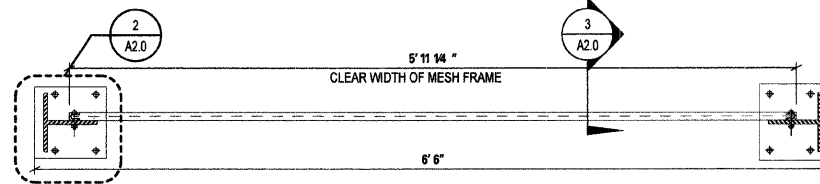




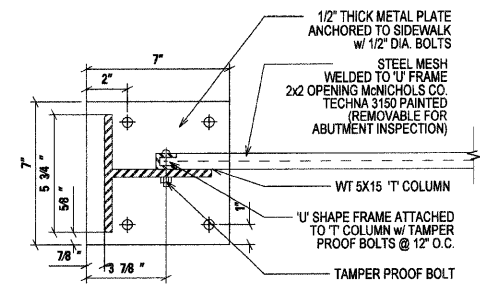
- NOTES:
1. ALL DIMENSIONS, INCLUDING BUT NOT LIMITED TO EXISTING FASCIA STRUCTURE, BRACKET SPACING AND RAILING SPACING TO BE FIELD VERIFIED.
  2. EACH GATEWAY MONUMENT SIGN PANEL TO BE CENTERED BETWEEN THE BRACKETS OF THE EXISTING FASCIA STRUCTURE.
  3. FOR REMOVAL OF EXISTING ELEC. CONDUITS, JUNCTION BOXES AND INSTALLATION OF NEW, REFER TO ELECTRICAL DRAWINGS.

LEGEND:  
 EXISTING SURFACE TO BE PAINTED

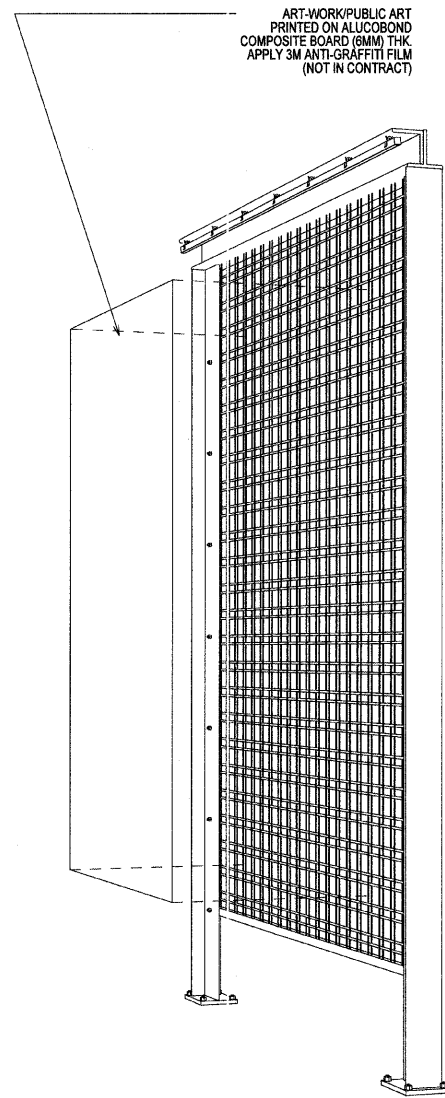




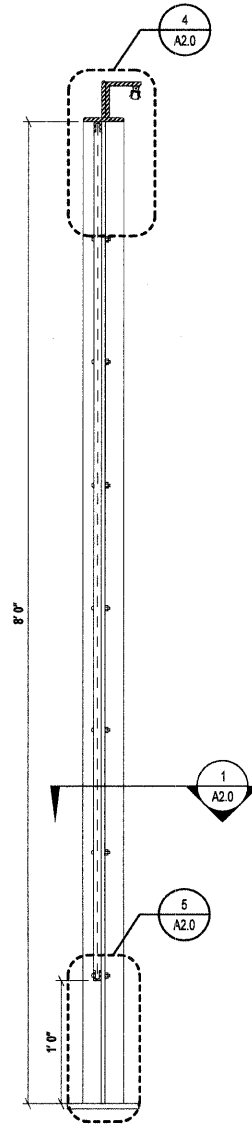
**1 ORN.METAL PANEL-PLAN**  
SCALE: 1-1/2" = 1'-0"



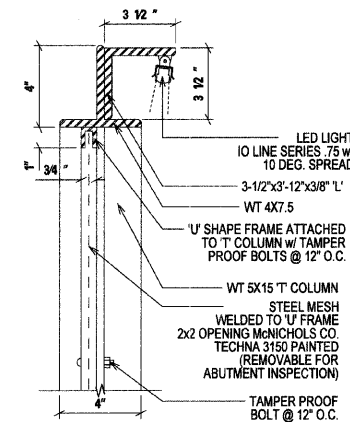
**2 PLAN DETAIL @ BASE**  
SCALE: 3" = 1'-0"



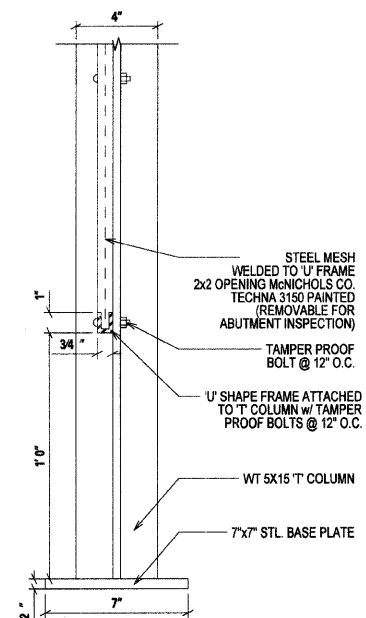
**7 PERSPECTIVE (NIC)**  
SCALE: NTS



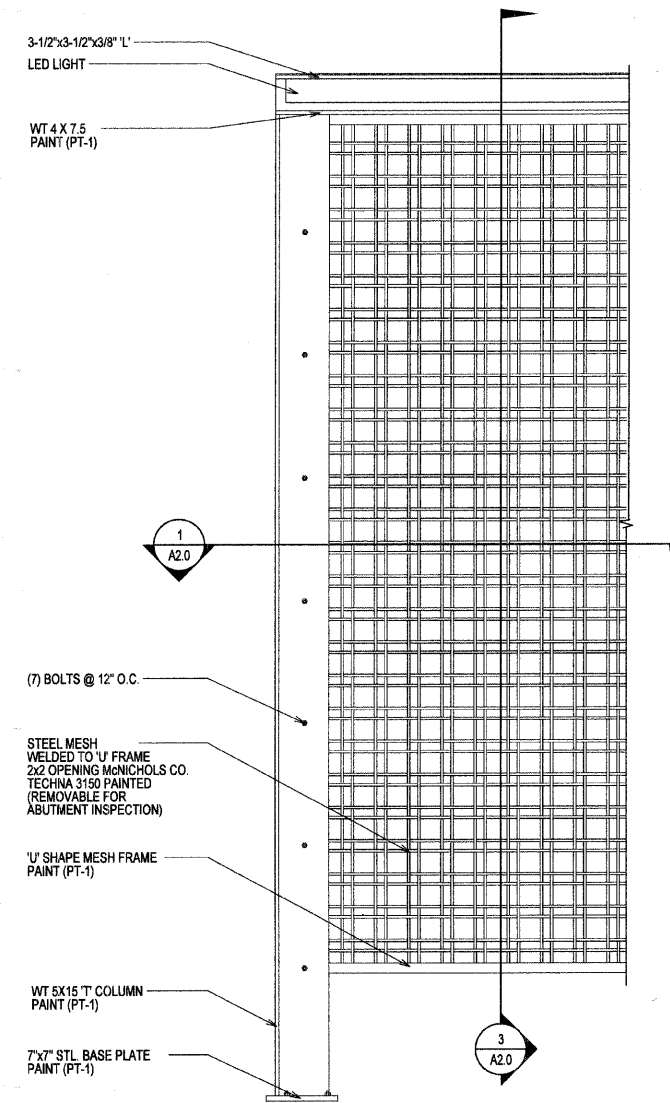
**3 ORN.METAL PANEL-SECTIC**  
SCALE: 1-1/2" = 1'-0"



**4 SECTION DETAIL @ TOP**  
SCALE: 3" = 1'-0"



**5 SECTION DETAIL @ BASE**  
SCALE: 3" = 1'-0"



**6 ENLARGED ELEVATION**  
SCALE: 1 1/2" = 1'-0"

ART-WORK/PUBLIC ART  
PRINTED ON ALUCOBOND  
COMPOSITE BOARD (6MM) THK  
APPLY 3M ANTI-GRAFFITI FILM  
(NOT IN CONTRACT)

FILE NAME = #FILE#



USER NAME = #USER#	DESIGNED <i>AT</i>	REVISED -
PLOT SCALE = #SCALE#	DRAWN <i>EB</i>	REVISED -
PLOT DATE = #DATE#	CHECKED <i>DK</i>	REVISED -
	DATE <i>11-18-2008</i>	REVISED -

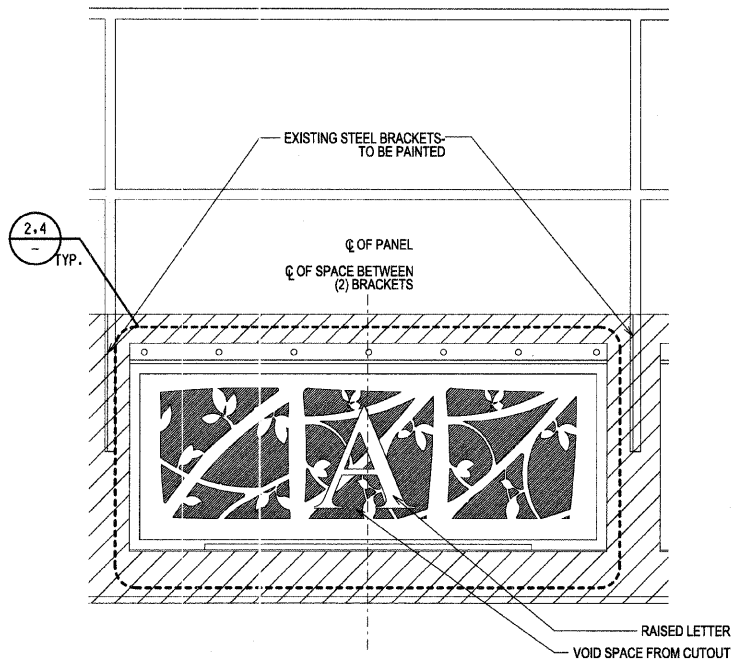
STATE OF ILLINOIS  
DEPARTMENT OF TRANSPORTATION

ORNAMENTAL METAL PANEL  
ENLARGED PLANS AND DETAILS

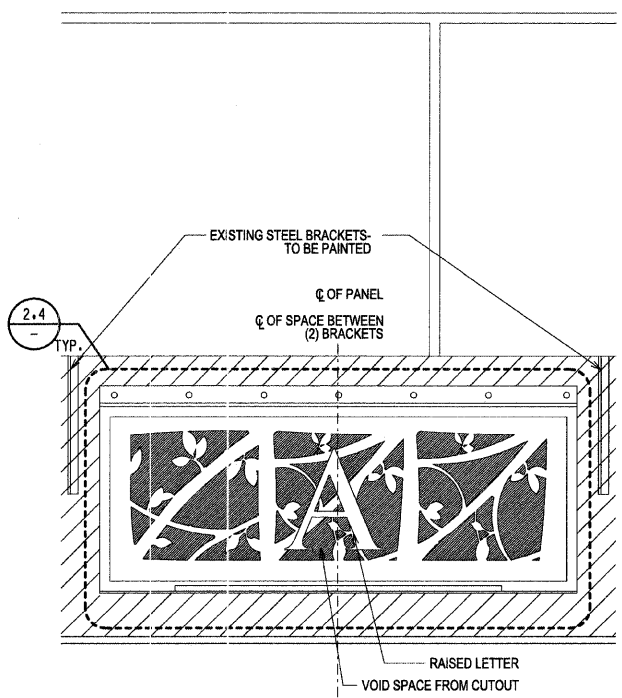
SCALE: AS SHOWN SHEET NO. OF SHEETS STA. TO STA.

F.A. RTE.	SECTION	COUNTY	TOTAL SHEETS	SHEET NO.
2775	06-00243-00-BR	COOK	14	9
FED. ROAD DIST. NO. ILLINOIS FED. AID PROJECT			CONTRACT NO. 63091	

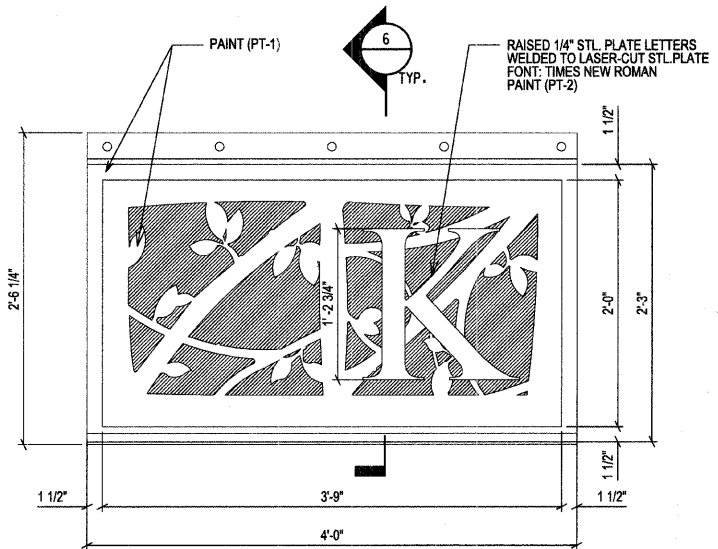
SHEET A2.0



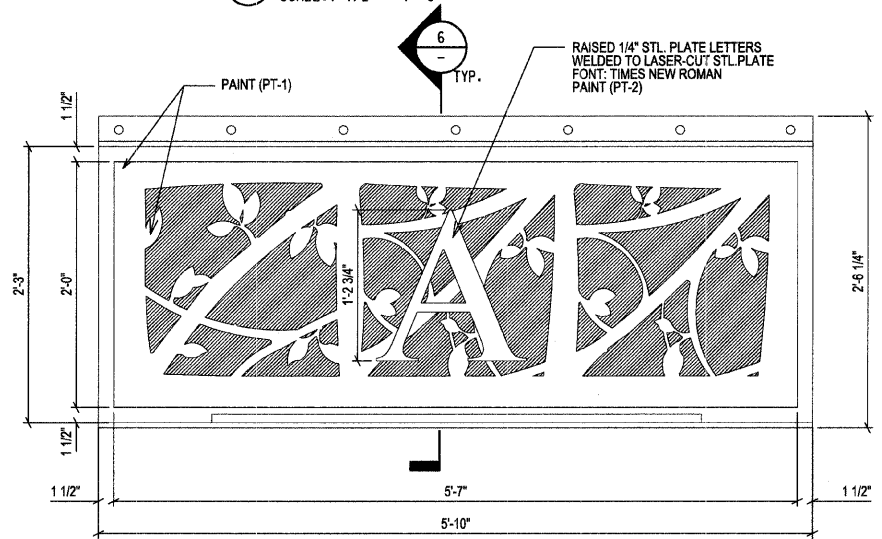
**1 ELEVATION AT NORTH GATEWAY**  
SCALE: 1" = 1'-0"



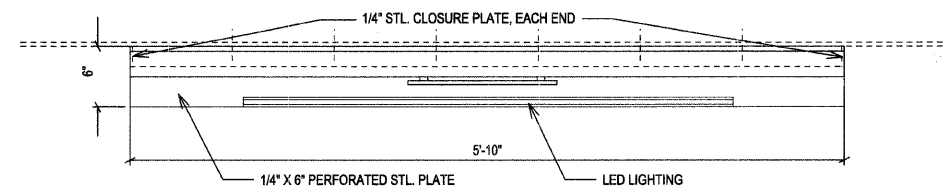
**3 ELEVATION AT SOUTH GATEWAY**  
SCALE: 1" = 1'-0"



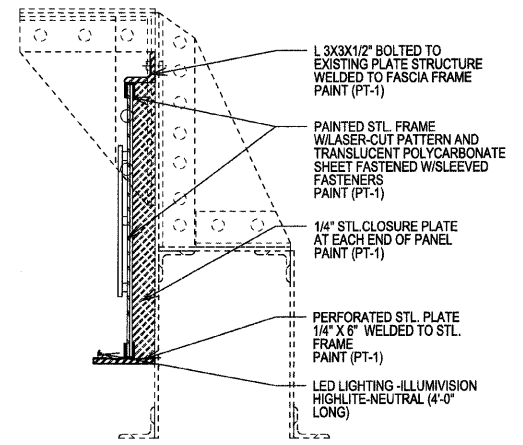
**2 GATEWAY MONUMENT SIGN PANEL TYPE A ELEVATION**  
SCALE: 1 1/2" = 1'-0"



**4 GATEWAY MONUMENT SIGN PANEL TYPE B ELEVATION**  
SCALE: 1 1/2" = 1'-0"



**5 PLAN SECTION AT GATEWAY MONUMENT SIGN**  
SCALE: 1 1/2" = 1'-0"



**6 SECTION AT GATEWAY MONUMENT SIGN**  
SCALE: 1 1/2" = 1'-0"



USER NAME : #USER#	DESIGNED AT	REVISED -
PLLOT SCALE : #SCALE#	DRAWN EB	REVISED -
PLLOT DATE : #DATE#	CHECKED DK	REVISED -
	DATE 11-18-2008	REVISED -

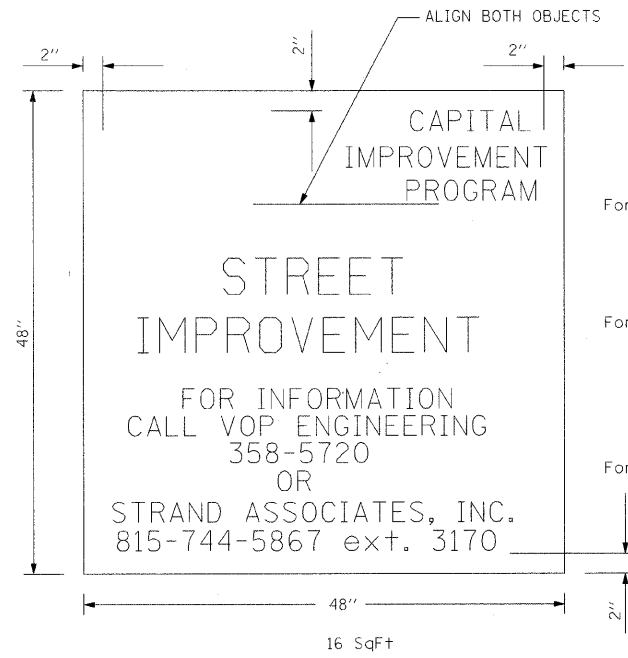
STATE OF ILLINOIS  
DEPARTMENT OF TRANSPORTATION

GATEWAY MONUMENT SIGN DETAILS

SCALE: AS SHOWN SHEET NO. OF SHEETS STA. TO STA.

SHEET A2.1	
F.A. RTE.	SECTION
2775	06-00243-00-BR
COUNTY	TOTAL SHEETS
COOK	14
CONTRACT NO. 63091	
FED. ROAD DIST. NO. ILLINOIS FED. AID PROJECT	





Font: FRANKLIN GOTHIC DEMI  
- BOLD, 2 INCH SIZE

Font: FRANKLIN GOTHIC DEMI  
- BOLD, 3-1/2 INCH SIZE

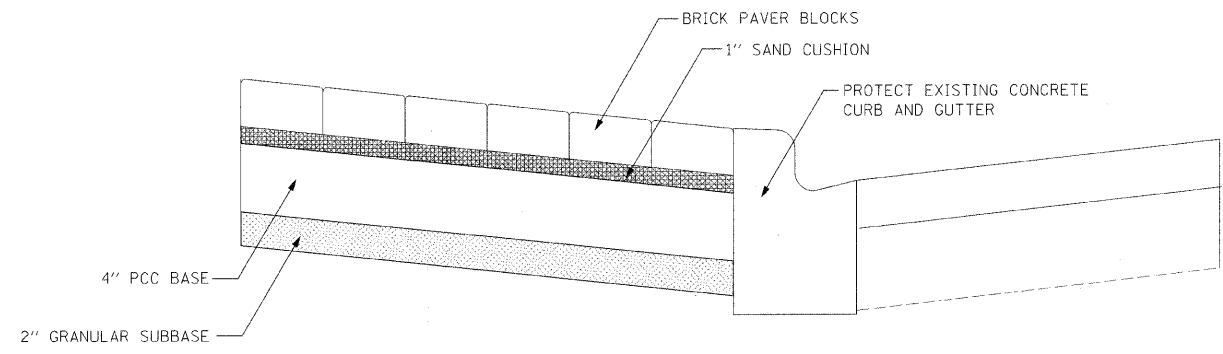
Font: FRANKLIN GOTHIC BOOK  
- BOLD, 2 INCH SIZE

Background: WHITE

All Lettering: GREY (PMS 346c) - Screened  
or 3m CONTROLTAK PLUS #180-41 - Vinyl

Logo Symbol: GREEN (PMS 3525c) - Screened  
or 3m CONTROLTAK PLUS #180-56 - Vinyl

PROJECT SIGN DETAIL



BRICK PAVER SIDEWALK ON RIGID BASE DETAIL

FILE NAME = S:\JUL\6700-6700-6754\087\Micros\08 park Avenue.dwg



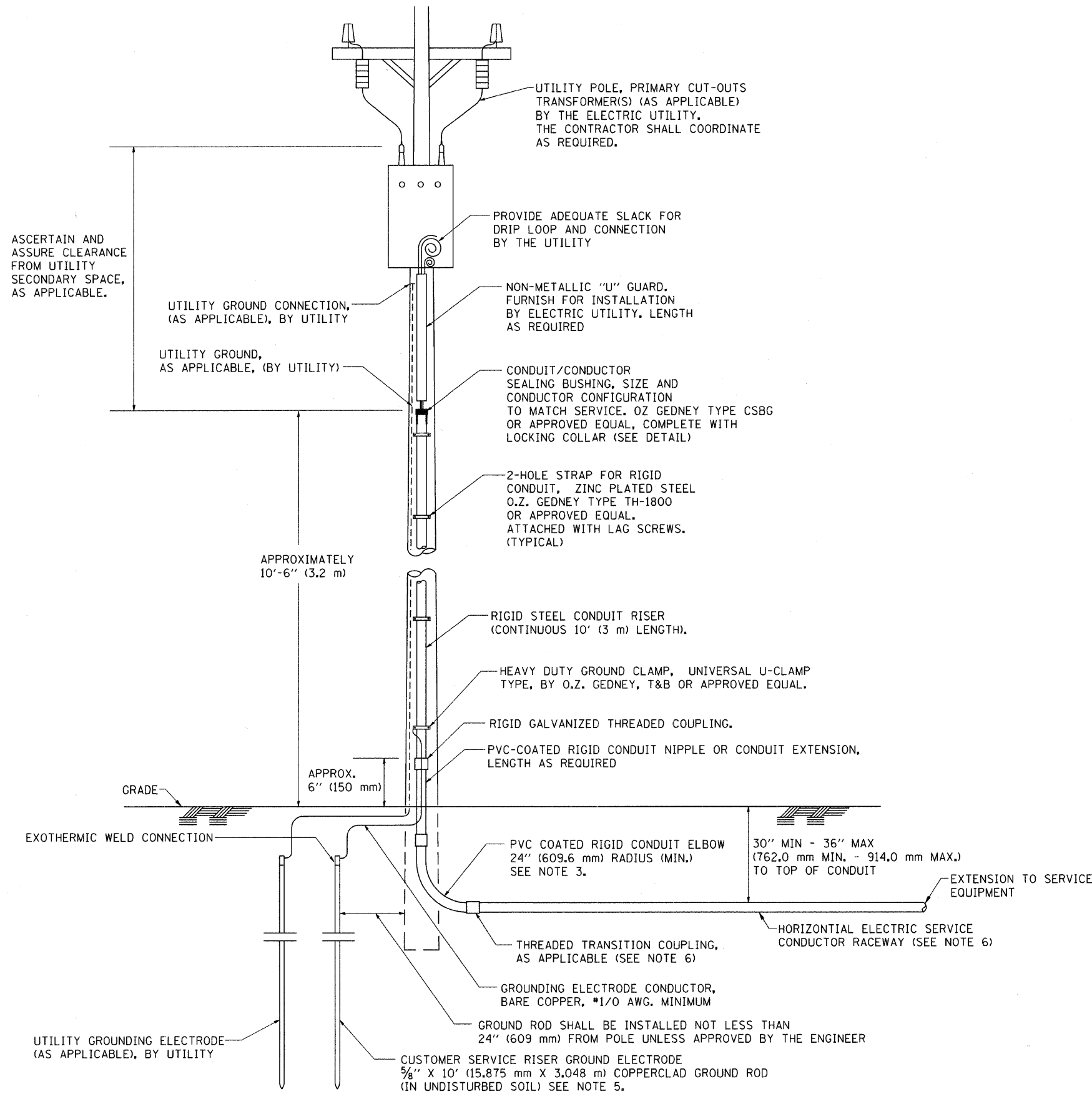
USER NAME = kundras	DESIGNED -	REVISED -
	DRAWN -	REVISED -
PLOT SCALE = 20.0000 1/16 IN.	CHECKED -	REVISED -
PLOT DATE = 11/19/2008	DATE -	REVISED -

**STATE OF ILLINOIS  
DEPARTMENT OF TRANSPORTATION**

**DETAILS**

SCALE: AS SHOWN SHEET NO. OF SHEETS STA. TO STA.

F.A. RTE.	SECTION	COUNTY	TOTAL SHEETS	SHEET NO.
2175	06-00243-00-BR	COOK	14	12
FED. ROAD DIST. NO.			ILLINOIS FED. AID PROJECT	
			CONTRACT NO. 63091	

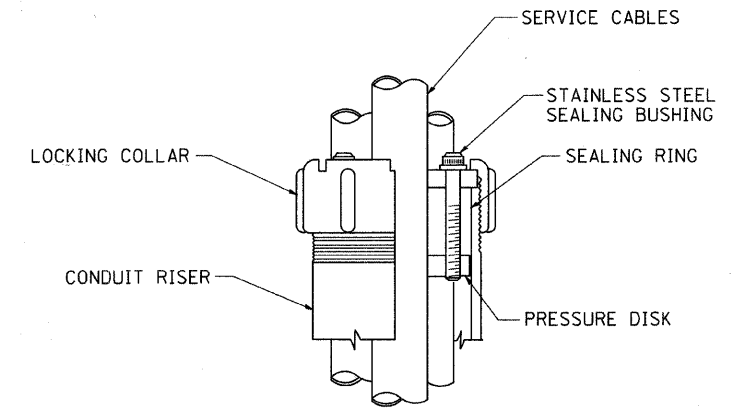


**APPLICATION**

THIS DETAIL APPLIES FOR LOW VOLTAGE ELECTRIC SERVICE (660 V OR LESS) FROM AN OVERHEAD UTILITY SUPPLY TO SEPERATLY-MOUNTED SERVICE EQUIPMENT.

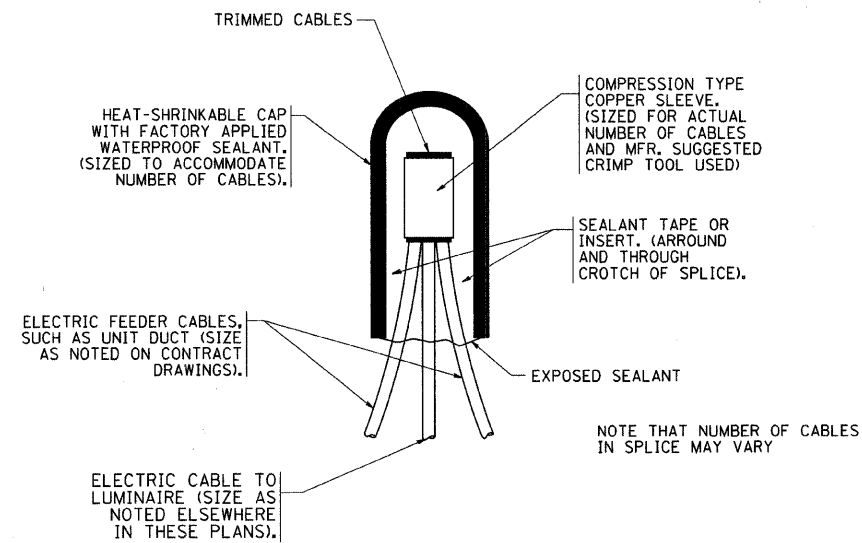
**NOTES**

- SERVICE VOLTAGE SHALL BE AS INDICATED ELSEWHERE IN THE DRAWINGS.
- UNLESS OTHERWISE INDICATED, ITEMS AND WORK SHALL BE INCLUDED AND PAID AS PART OF THE ELECTRIC UTILITY SERVICE INSTALLATION PAY ITEM.
- CONDUIT AND CONNECTOR DIAMETER SHALL MATCH THE DIAMETER OF THE SERVICE CONDUCTOR RACEWAY AS INDICATED ON THE PLANS.
- PVC COATED RACEWAYS AND ACCESSORIES SHALL BE CAREFULLY INSTALLED WITH MFR RECOMMENDED TOOLS AND PROCEDURES TO AVOID DAMAGE. ANY DAMAGE SHALL BE REPAIRED WITH COMPATIBLE PVC TOUCH-UP MATERIAL TO THE SATISFACTION OF THE ENGINEER OR THE DAMAGED MATERIAL SHALL BE REPLACED AT NO ADDITIONAL COST.
- THE CONTRACTOR SHALL OBTAIN INSPECTION AND APPROVAL BY THE ENGINEER OF SERVICE RISER GROUND ELECTRODE, RISER ELBOW, NIPPLE AND CONNECTION TO SERVICE CONDUCTOR RACEWAY EXTENSION BEFORE BACKFILL AND SHALL ALSO OBTAIN INSPECTION OF SERVICE RISER AND SEALING BUSHING BEFORE UTILITY "U" GUARD INSTALLATION AND SERVICE CONNECTION.
- THE HORIZONTAL ELECTRIC SERVICE CONDUCTOR RACEWAY SHALL BE AS INDICATED AND SHALL BE MEASURED SEPARATELY FOR PAYMENT. WHEN THE RACEWAY IS PVC-COATED RIGID GALVANIZED STEEL, THE COUPLING SHALL BE THE SAME. WHEN THE RACEWAY IS PVC CONDUIT (IN CONCRETE), THE COUPLING SHALL BE A METALIC TO NON METALIC ADAPTER. WHEN THE RACEWAY IS ENCASED IN CONCRETE, THE CONCRETE SHALL EXTEND TO COVER THE COUPLING.
- PLANS AND DETAILS INDICATE THE GENERAL NATURE AND REQUIREMENTS. THEY DO NOT SHOW EVERY ACCESSORY AND ATTACHMENT, AND THEY DO NOT RELIEVE THE CONTRACTOR OF THE REQUIREMENTS OF THE SPECIFICATIONS AND SPECIAL PROVISIONS TO ASCERTAIN UTILITY REQUIREMENTS AND TO COORDINATE ACCORDINGLY, FURNISHING ALL ITEMS AND WORK NOT PROVIDED BY THE UTILITY, BUT NECESSARY FOR A COMPLETE SERVICE INSTALLATION IS REQUIRED AND SHALL BE INCLUDED IN THE ELECTRIC UTILITY SERVICE INSTALLATION PAY ITEM.



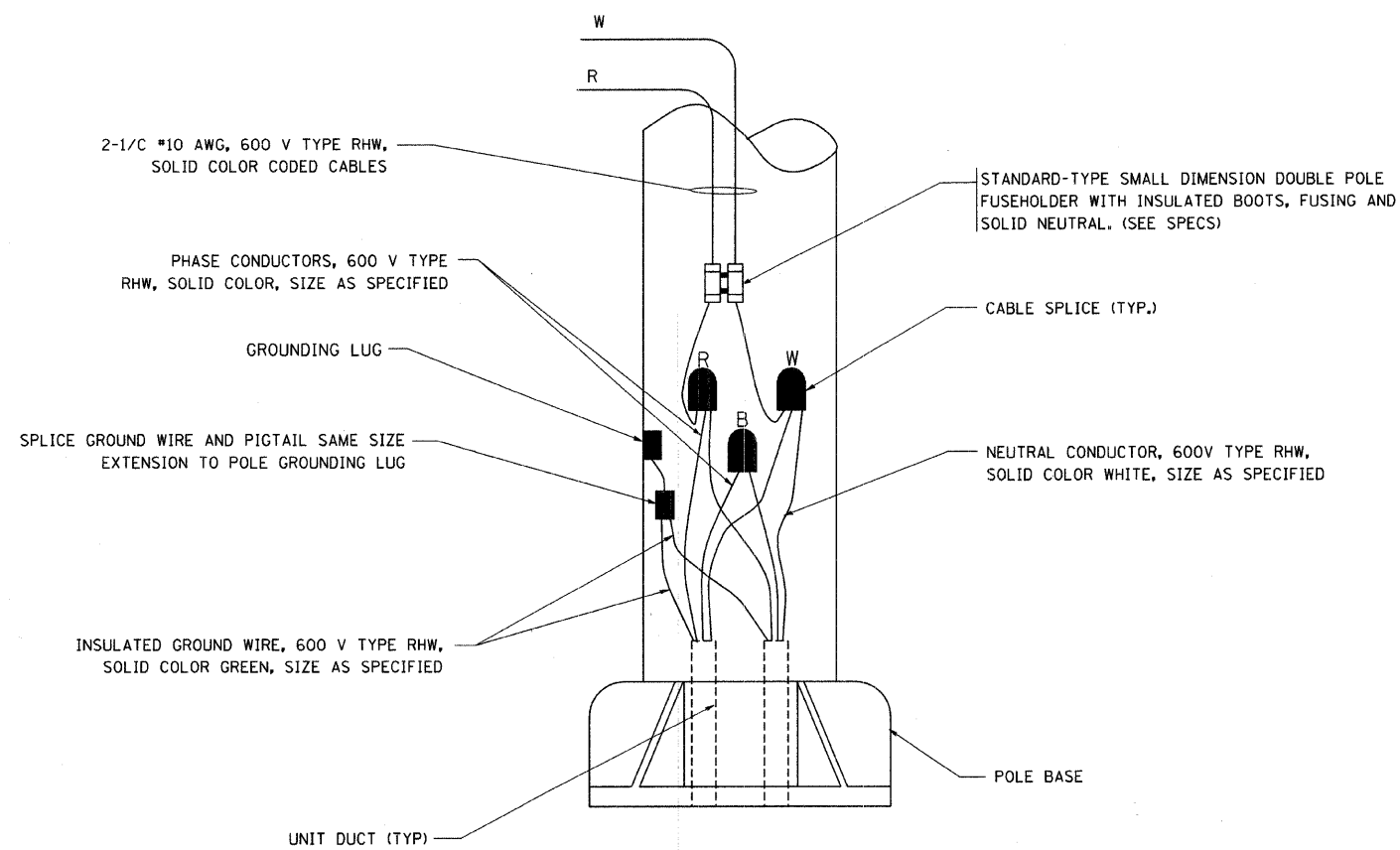
**SEALING BUSHING DETAIL**

FILE NAME = W:\diststd\22x34\be228.dgn	USER NAME = goglianob	DESIGNED -	REVISED - 03-03-06	<b>STATE OF ILLINOIS DEPARTMENT OF TRANSPORTATION</b>		<b>ELECTRIC SERVICE INSTALLATION AERIAL REMOTE DISCONNECT</b>		F.A. RTE. *	SECTION	COUNTY	TOTAL SHEETS	SHEET NO.
PLOT SCALE = 50.0000" / IN.	CHECKED - MEA	DRAWN -	REVISED -					06-00243-00-02		11	11	
PLOT DATE = 1/4/2008	DATE -	CHECKED -	REVISED -					BE-220	CONTRACT NO. 63091			
								FED. ROAD DIST. NO. 1 ILLINOIS FED. AID PROJECT				
				SCALE: NONE	SHEET NO. 1 OF 1 SHEETS	STA.	TO STA.					



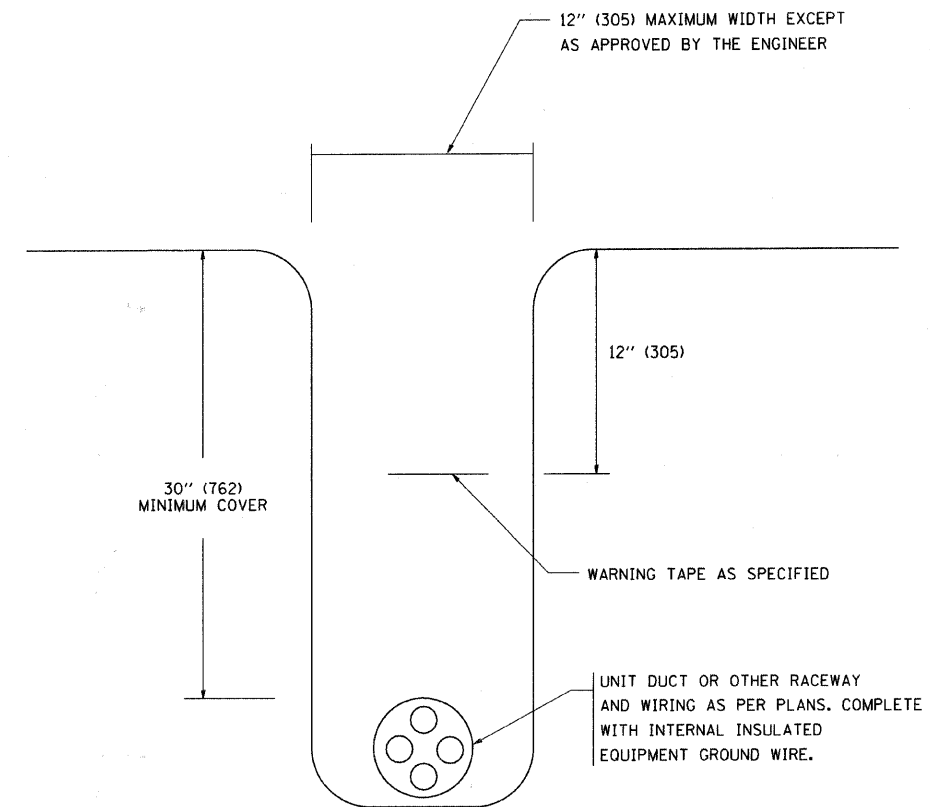
TYPICAL SPLICE DETAIL

N.T.S.



POLE WIRING DETAIL

N.T.S.



TYPICAL WIRING IN TRENCH DETAIL

N.T.S.

FILE NAME =  
W:\distsd\22x34\be702.dgn

USER NAME = gaglianob  
PLOT SCALE = 50,000 / 1 IN.  
PLOT DATE = 1/4/2008

DESIGNED -	REVISED - 08-08-03
DRAWN -	REVISED -
CHECKED -	REVISED -
DATE -	REVISED -

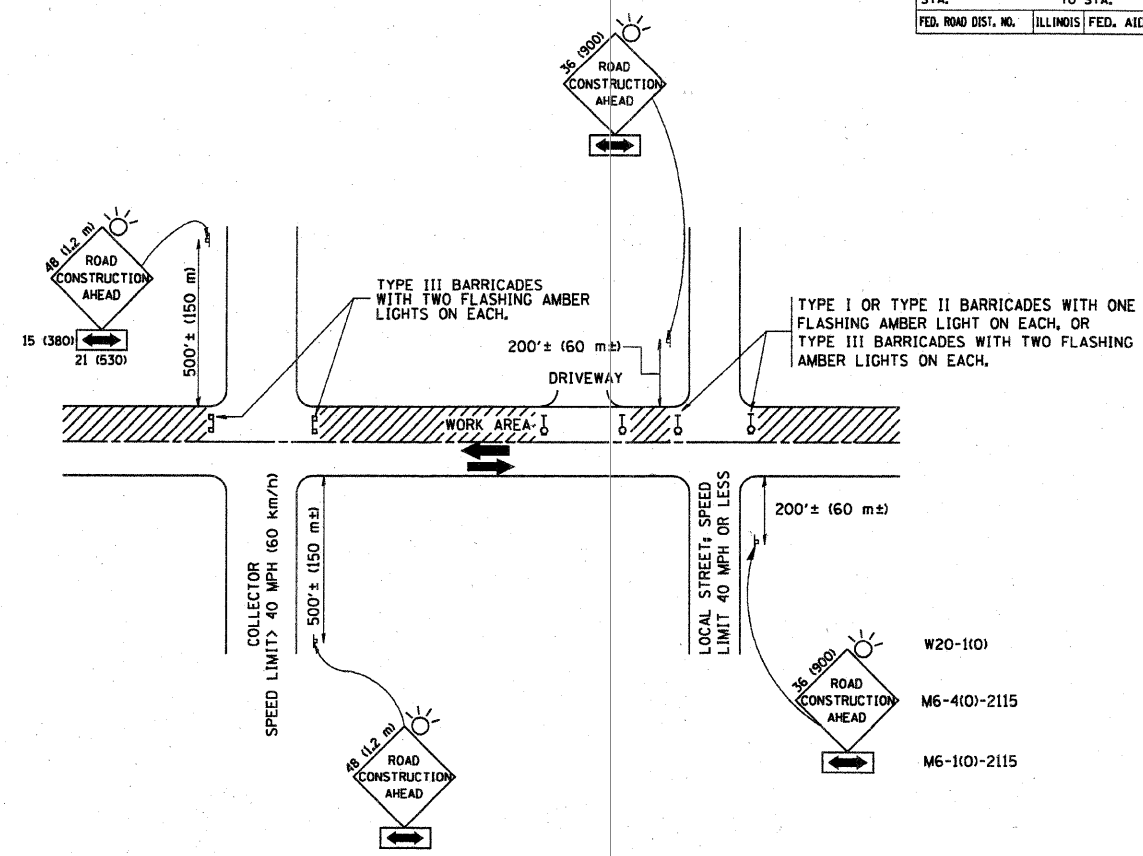
STATE OF ILLINOIS  
DEPARTMENT OF TRANSPORTATION

MISC. ELECTRICAL DETAILS  
SHEET A

SCALE: NONE SHEET NO. 1 OF 1 SHEETS STA. TO STA.

F.A. RTE.	SECTION	COUNTY	TOTAL SHEETS	SHEET NO.
	06-00243-00-BR		14	10
BE-702		CONTRACT NO. 63091		
FED. ROAD DIST. NO. 1 ILLINOIS FED. AID PROJECT				

F.A. RTE.	SECTION	COUNTY	TOTAL SHEETS	SHEET NO.
	06-0243-00-BR			15
STA.		TO STA.		
FED. ROAD DIST. NO.	ILLINOIS	FED. AID	PROJECT	



TRAFFIC CONTROL AND PROTECTION FOR SIDE ROADS, INTERSECTIONS, AND DRIVEWAYS

NOTES:

- A. FOR NO LANE RESTRICTION ON THE SIDE ROAD OR DRIVEWAYS
- SIDE ROAD WITH A SPEED LIMIT OF 40 MPH (60 km/h) OR LESS AS SHOWN ON THE DRAWING AND AS DIRECTED BY THE ENGINEER:
    - ONE ROAD CONSTRUCTION AHEAD SIGN 36 x 36 (900x900) WITH A FLASHER AND FLAG MOUNTED ON IT APPROXIMATELY 200' (60 m) IN ADVANCE OF THE MAIN ROUTE.
    - THE CLOSED PORTION OF THE MAIN ROUTE SHALL BE PROTECTED BY BLOCKING WITH TYPE I, TYPE II OR TYPE III BARRICADES, 1/3 OF THE CROSS SECTION OF THE CLOSED PORTION.
  - SIDE ROAD WITH A SPEED LIMIT GREATER THAN 40 MPH (60 km/h) AS SHOWN ON THE DRAWING AND AS DIRECTED BY THE ENGINEER:
    - ONE ROAD CONSTRUCTION AHEAD SIGN 48 x 48 (1.2 m x 1.2 m) WITH A FLASHER MOUNTED ON IT APPROXIMATELY 500' (150 m) IN ADVANCE OF THE MAIN ROUTE.
    - THE CLOSED PORTION OF THE MAIN ROUTE SHALL BE PROTECTED BY BLOCKING WITH TYPE III BARRICADES, 1/2 OF THE CROSS SECTION OF THE CLOSED PORTION.
3. WHEN THE SIDE ROAD LIES BETWEEN THE BEGINNING OF THE MAINLINE SIGNING AND THE WORK ZONE, A SINGLE HEADED ARROW (M6-1) SHALL BE USED IN LIEU OF THE DOUBLE HEADED ARROW (M6-4).
- B. FOR A LANE CLOSURE ON A SIDE ROAD OR DRIVEWAY:
- USE APPLICABLE PORTIONS OF THE TYPICAL APPLICATION OF TRAFFIC CONTROL DEVICES (STD. 701501, STD. 701606 OR THE APPROPRIATE STANDARD). THE SPACING OF SIGNS AND BARRICADES SHALL BE ADJUSTED FOR FIELD CONDITIONS AS DIRECTED BY THE ENGINEER. THE DIRECTIONAL ARROW SHALL BE COVERED OR REMOVED WHEN NO LONGER CONSISTENT WITH THE SIDE ROAD LANE CLOSURE.
- C. ADVANCE WARNING SIGNS ARE TO BE OMITTED ON DRIVEWAY UNLESS OTHERWISE NOTED.
- D. THE TRAFFIC CONTROL AND PROTECTION FOR SIDE ROADS, INTERSECTIONS, AND DRIVEWAYS SHALL BE INCIDENTAL TO THE COST OF SPECIFIED TRAFFIC CONTROL STANDARDS OR ITEMS.

All dimensions are in millimeters (inches) unless otherwise shown.

REVISIONS	
NAME	DATE
LHA	6/89
T. RAMMACHER	09/08/94
J. OBERLE	10/18/95
A. HOUSEH	03/06/96
A. HOUSEH	10/15/96
T. RAMMACHER	01/06/00

ILLINOIS DEPARTMENT OF TRANSPORTATION  
 TRAFFIC CONTROL AND PROTECTION  
 FOR  
 SIDE ROADS, INTERSECTIONS, AND  
 DRIVEWAYS

SCALE: NONE

DRAWN BY  
 CHECKED BY  
 TC-10

PLOT DATE = 2/6/2007  
 PLOT SCALE = 3/8" = 1' IN.  
 USER NAME = bauer-df