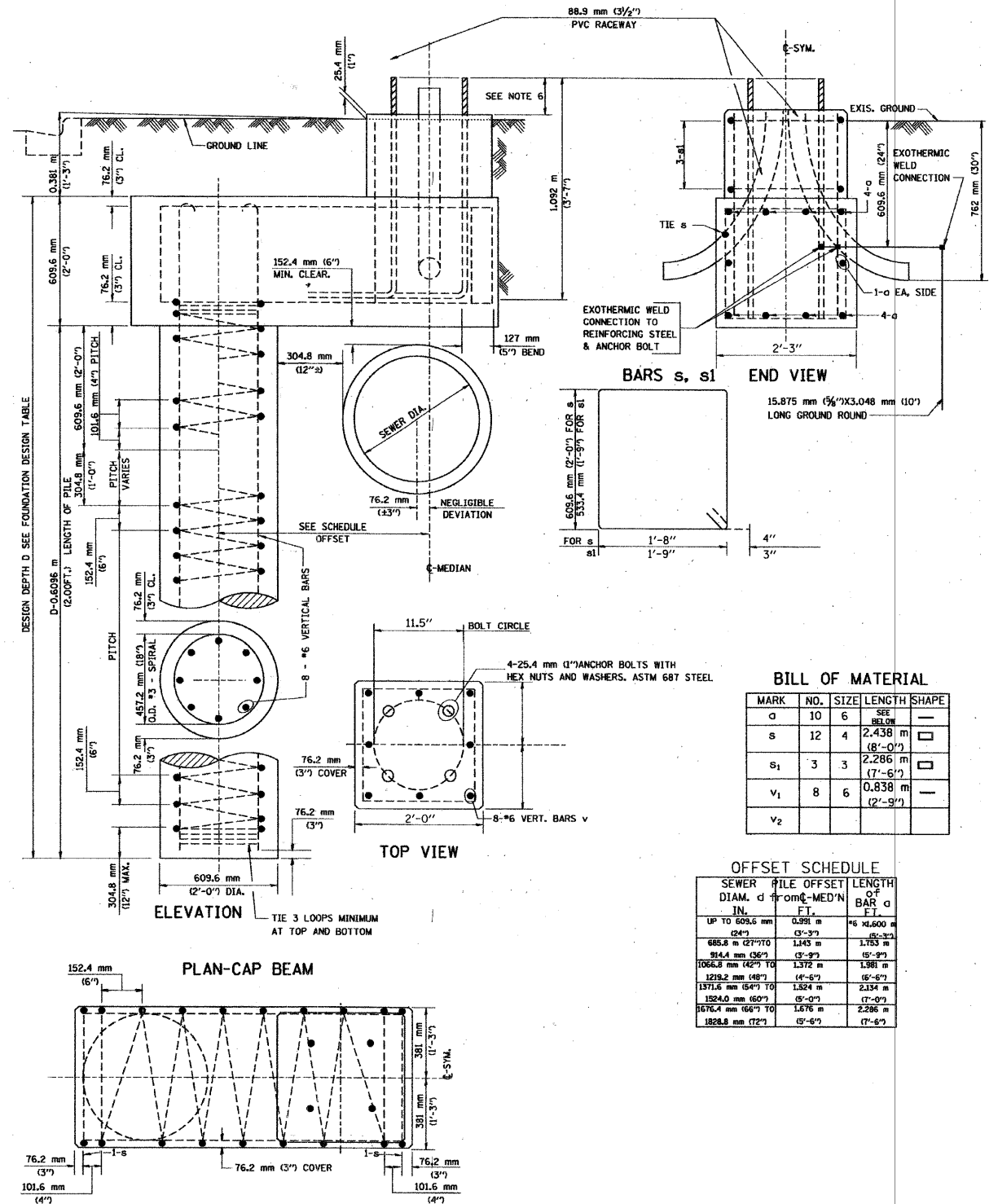


FOUNDATION DESIGN TABLE

TYPE OF SOIL	DESIGN DEPTH OF FOUNDATION		REINFORCEMENT IN FOUNDATION			
	SINGLE ARM D	TWIN ARM D	SINGLE ARM		TWIN ARM	
			VERT BARS	SPIRAL	VERT BARS	SPIRAL
SOFT CLAY	3.962 m (13'-0")	4.572 m (15'-0")	8-#6X3.810 m (12'-6")	#3X37.186 m (122')	8-#6X4.343 m (14'-3")	#3X42.977 m (141')
MEDIUM CLAY	2.896 m (9'-6")	3.277 m (10'-9")	8-#6X2.743 m (9'-0")	#3X27.432 m (90')	8-#6X3.048 m (10'-0")	#3X30.480 m (100')
STIFF CLAY	2.134 m (7'-0")	2.438 m (8'-0")	8-#6X1.981 m (6'-6")	#3X20.112 m (66')	8-#6X2.286 m (7'-6")	#3X23.165 m (76')
LOOSE SAND	2.743 m (9'-0")	3.048 m (10'-0")	8-#6X2.591 m (8'-6")	#3X25.908 m (85')	8-#6X2.896 m (9'-6")	#3X28.651 m (94')
MEDIUM SAND	2.515 m (8'-3")	2.743 m (9'-0")	8-#6X2.438 m (8'-0")	#3X23.774 m (78')	8-#6X2.591 m (8'-6")	#3X25.908 m (85')
DENSE SAND	2.362 m (7'-9")	2.743 m (9'-0")	8-#6X2.286 m (7'-6")	#3X22.250 m (73')	8-#6X2.591 m (8'-6")	#3X25.908 m (85')
ROCK OR SOLIDIFIED SLAG	1.524 m (5'-0")	1.524 m (5'-0")	NONE	NONE	NONE	NONE

NOTES

- THE ENGINEER WILL DETERMINE THE CLASS OF SOIL DURING EXCAVATION AND SELECT THE DESIGN DEPTH OF THE FOUNDATION FROM THE DESIGN TABLE.
- EXCAVATION OF THE POLE FOUNDATION MUST BE MADE WITH AN AUGER, 24" OR 30" IN DIAMETER.
- THE ANCHOR MUST BE A TACK WELDED TYPE BOLT OR HOOK TYPE BOLT. COLD BENDING OF THE HOOK BOLT IS NOT ALLOWED.
- THE ANCHOR BOLTS AND RACEWAYS MUST BE PROPERLY SECURED IN PLACE BEFORE THE CONCRETE IS PLACED IN THE FORM.
- THE ENTIRE LENGTH OF THE ANCHOR BOLTS, AS WELL AS THE NUTS AND WASHERS, MUST BE HOT DIP GALVANIZED IN ACCORDANCE WITH THE REQUIREMENTS OF ASTM DESIGNATION A 153.
- THE CONTRACTOR MUST COORDINATE EXTENSION OF ANCHOR BOLTS ABOVE THE TOP OF FOUNDATION WITH THE BREAKAWAY DEVICE MANUFACTURER'S REQUIREMENTS. IF LIGHT POLE IS MOUNTED WITHOUT A BREAKAWAY DEVICE, ANCHOR BOLTS MUST COORDINATE WITH THE POLE MANUFACTURER'S REQUIREMENTS.
- THE CONTRACTOR MUST COORDINATE THE ANCHOR BOLT CIRCLE WITH THE LIGHT POLE MANUFACTURER'S RECOMMENDATIONS.
- RACEWAYS MUST PROJECT 1" ABOVE THE TOP OF FOUNDATION.
- CONCRETE SHALL BE CLASS "SI". CONCRETE FOUNDATIONS MUST BE CURED FOR TEN (10) DAYS BEFORE THE LIGHT STANDARD IS ERECTED.
- THE CABLE TRENCH SHALL BE BACKFILLED AND FIRMLY COMPACTED BEFORE THE LIGHT STANDARD IS ERECTED.



BILL OF MATERIAL

MARK	NO.	SIZE	LENGTH	SHAPE
o	10	6	SEE BELOW	—
s	12	4	2.438 m (8'-0")	□
s ₁	3	3	2.286 m (7'-6")	□
v ₁	8	6	0.838 m (2'-9")	—
v ₂				

OFFSET SCHEDULE

SEWER DIA. IN.	PILE OFFSET FROM MED'N FT.	LENGTH OF BAR FT.
UP TO 609.6 mm (24")	0.991 m (3'-3")	#6 x 1.600 m (5'-3")
609.6 mm (24") TO 914.4 mm (36")	1.243 m (4'-1")	1.753 m (5'-9")
914.4 mm (36") TO 1066.8 mm (42")	1.372 m (4'-6")	1.981 m (6'-6")
1066.8 mm (42") TO 1219.2 mm (48")	1.501 m (4'-11")	2.134 m (7'-0")
1219.2 mm (48") TO 1371.6 mm (54")	1.630 m (5'-4")	2.354 m (7'-9")
1371.6 mm (54") TO 1524.0 mm (60")	1.759 m (5'-9")	2.591 m (8'-6")
1524.0 mm (60") TO 1676.4 mm (66")	1.888 m (6'-2")	2.828 m (9'-3")
1676.4 mm (66") TO 1828.8 mm (72")	2.017 m (6'-8")	3.065 m (10'-1")

FILE NAME = n:\pco\6208\design\lighting\66838_18_detaill1.dgn

CG **Ciorba Group, Inc.**
 CONSULTING ENGINEERS
 6507 North Cumberland Avenue, Suite 402
 Chicago, Illinois 60658
 Tel. 773.775.4009 Fax 773.775.4014

USER NAME = jvandre	DESIGNED - MLB	REVISED -
PLOT SCALE = 1:8000 / 1" IN.	DRAWN - MLB	REVISED -
PLOT DATE = 12/29/2008	CHECKED - JMV	REVISED -
	DATE - DECEMBER 2008	REVISED -

STATE OF ILLINOIS
DEPARTMENT OF TRANSPORTATION

WAUKEGAN ROAD LIGHTING IMPROVEMENTS
LIGHT POLE FOUNDATION, OFFSET
35' M.H., 11.5" BOLT CIRCLE

SCALE: NONE SHEET NO. 1 OF 1 SHEETS STA. TO STA.

F.A.P. RTE. 348	SECTION 07-00102-00-LT	COUNTY COOK	TOTAL SHEETS 23	SHEET NO. 22
FED. ROAD DIST. NO. - ILLINOIS		FED. AID PROJECT		
CONTRACT NO. 63099				