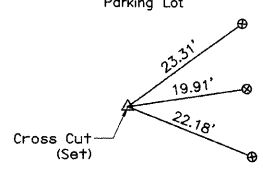
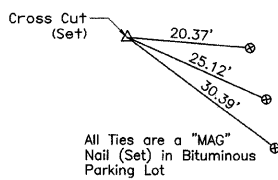
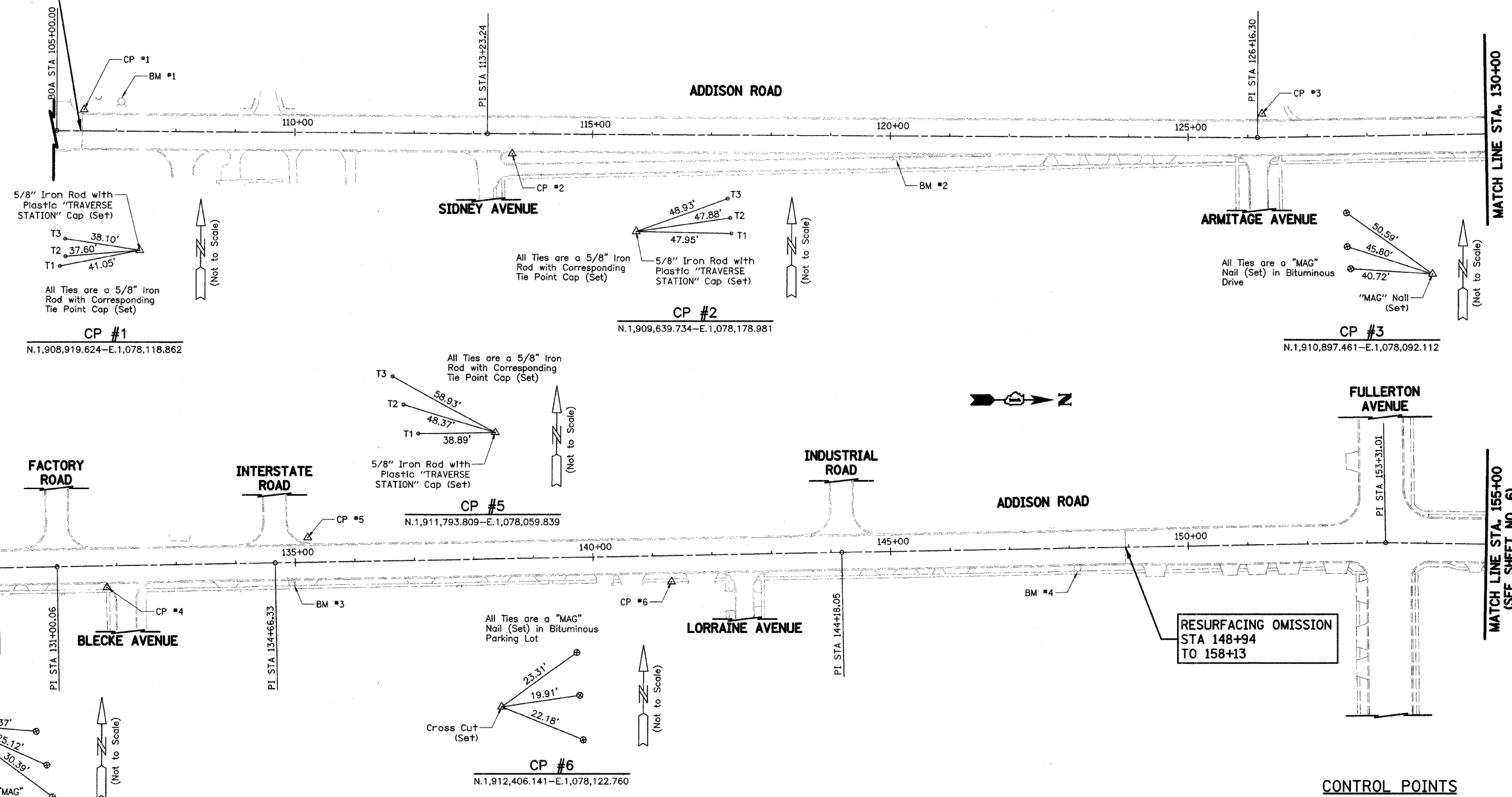


BEGIN ADDISON ROAD IMPROVEMENT STA 106+43



ADDISON ROAD ALIGNMENT DATA

DESCRIPTION	STATION	NORTHING	EASTING
BOA	105+00.00	1908774.3968	1078156.0952
PI	113+23.24	1909597.5911	1078147.2890
PI	126+16.30	1910890.5569	1078131.9316
PI	131+00.06	1911374.0549	1078115.8913
PI	134+66.33	1911740.0954	1078103.0892
PI	144+18.05	1912691.2250	1078069.3958
PI	153+31.01	1913603.6440	1078037.9432
PI	157+54.64	1914027.2682	1078036.9545
PI	179+96.74	1916269.3679	1078036.0092
PI	190+56.63	1917339.2609	1078033.6648
EOA	194+00.00	1917672.6257	1078035.3853

BENCH MARKS

BM #	DESCRIPTION	ELEVATION
1	CROSS CUT (SET) IN SOUTHWEST FLANGE BOLT OF FIRE HYDRANT ON WEST SIDE OF ADDISON ROAD.	708.15
2	CROSS CUT (SET) IN SOUTHWEST FLANGE BOLT OF FIRE HYDRANT ON EAST SIDE OF ADDISON ROAD.	695.09
3	CROSS CUT (SET) IN NORTHWEST FLANGE BOLT OF FIRE HYDRANT ON EAST SIDE OF ADDISON ROAD, EAST OF INTERSTATE ROAD.	703.45
4	CROSS CUT (SET) IN NORTHWEST FLANGE BOLT OF FIRE HYDRANT ON EAST SIDE OF ADDISON ROAD.	697.43
5	CROSS CUT (SET) IN NORTH FLANGE BOLT OF FIRE HYDRANT IN THE NORTHEAST QUADRANT OF THE INTERSECTION OF ADDISON ROAD AND FULLERTON AVENUE.	692.93

CONTROL POINTS

CP #	NORTHING	EASTING	STATION	OFFSET
1	1908919.624	1078118.862	106+45.62	35.68' LT.
2	1909639.734	1078178.981	113+65.00	32.19' RT.
3	1910897.461	1078092.112	126+24.52	39.57' LT.
4	1911458.396	1078149.283	131+83.19	36.32' RT.
5	1911793.809	1078059.839	135+21.54	41.32' LT.
6	1912406.141	1078122.760	141+31.26	43.24' RT.

NOTES:
BOA = BEGINNING OF ALIGNMENT
PI = POINT OF INTERSECTION
EOA = END OF ALIGNMENT

- NOTES:
- THREE POINT TIES ARE PROVIDED ONLY TO FIND GENERAL LOCATION OF CONTROL POINT NOT TO ACCURATELY RECREATE POINT.
 - COORDINATES AND DISTANCES SHOWN ARE GROUND.
 - BASIS OF BEARINGS IS THE ILLINOIS STATE PLANE COORDINATE SYSTEM EAST ZONE (NAD83).

DATE	
BY	
REVISION	
PLANNED	
ALIGNED	
CHECKED	
NO. 1	
NO. 2	
NO. 3	
NO. 4	
NO. 5	

DATE	
BY	
REVISION	
PLANNED	
ALIGNED	
CHECKED	
NO. 1	
NO. 2	
NO. 3	
NO. 4	
NO. 5	