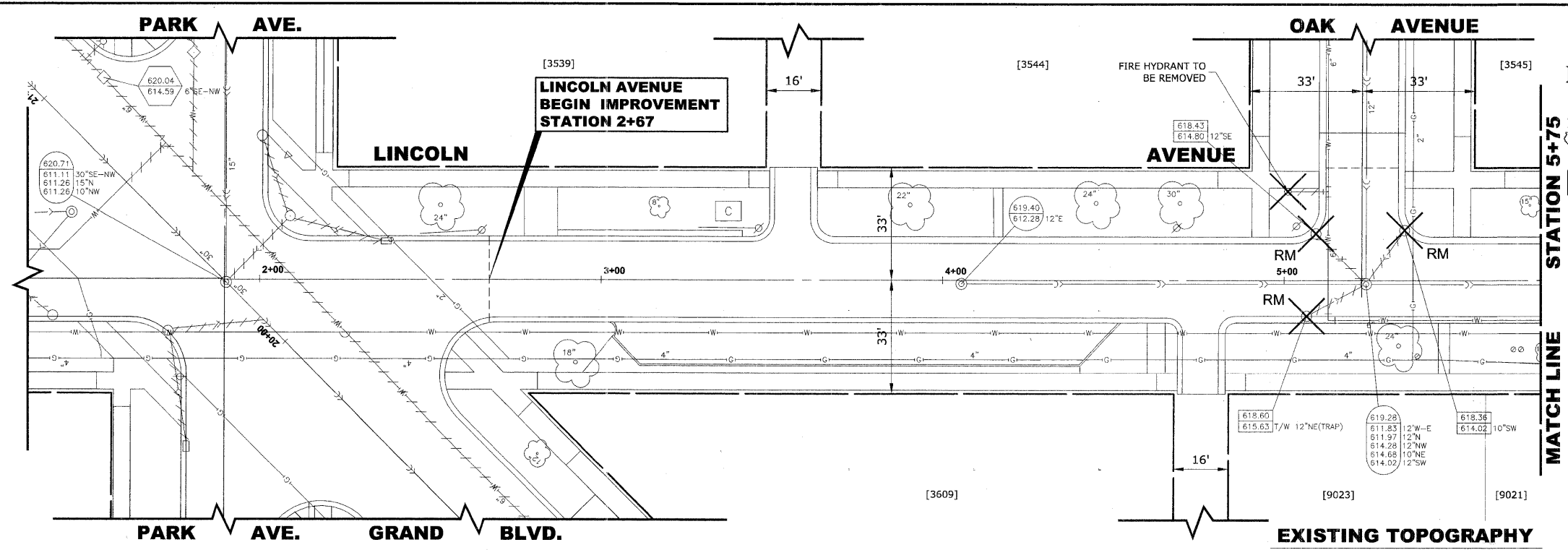
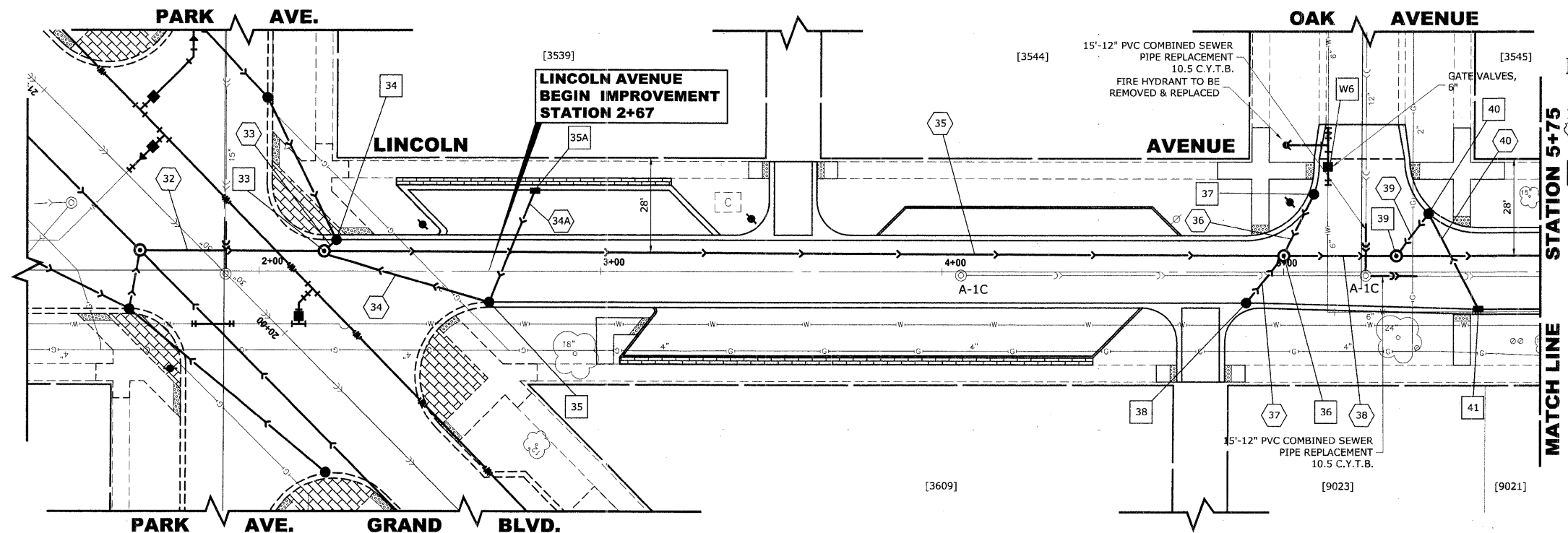


ROUTE NO.	SECTION	COUNTY	TOTAL SHEETS	SHEET NO.
FAU 1694	07-00122-00-PV	COOK	55	28
ILLINOIS PROJECT M-9003 (125)				
VILLAGE SECTION				
CONTRACT NO. 63101				

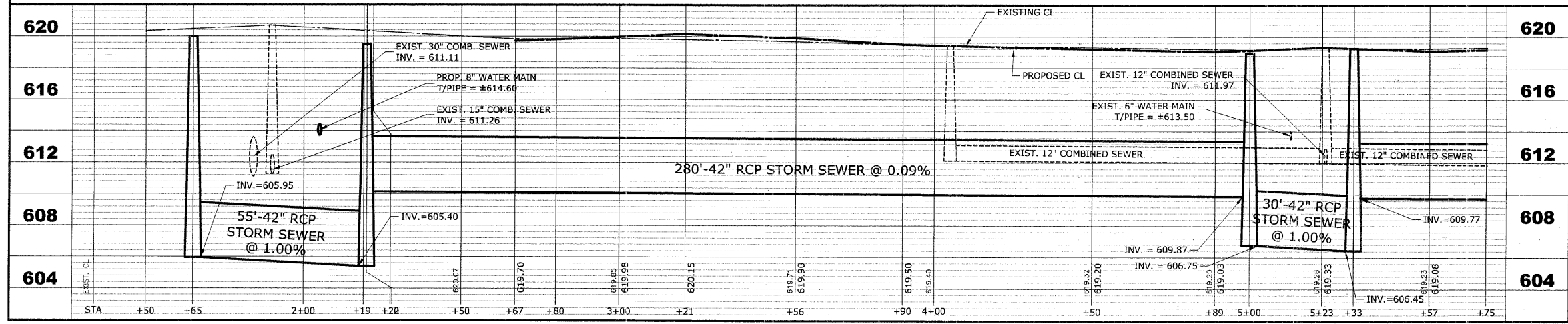


STRUC. NO.	STA	OFFSET	TYPE	RIM ELEV.	INVERT ELEV.
33	2+20	5' LT	R.D. STORM SEWER MANHOLE, 5' DIA., TYPE 1 FRAME, CLOSED LID	619.50	614.90 NE 614.90 SE 610.15 E 605.40 W
34	2+22	9' LT	R.D. CATCH BASIN, 4' DIA., TYPE 1 FRAME, OPEN LID	619.10	615.05 SE 614.95 SW
35	2+67	9' RT	R.D. CATCH BASIN, 4' DIA., TYPE 1 FRAME, OPEN LID	619.35	615.50 NE 615.40 NW
35A	2+80	23.5' LT	INLET, TYPE A, TYPE 1 FRAME, OPEN LID	619.35	615.85 SW
36	5+00	5' LT	R.D. STORM SEWER MANHOLE, 5' DIA., TYPE 1 FRAME, CLOSED LID	618.95	614.65 NE 615.00 SW 609.87 W 606.75 E
37	5+08	22' LT	R.D. CATCH BASIN, 4' DIA., TYPE 1 FRAME, OPEN LID	618.35	614.85 SW
38	4+89	9' RT	R.D. CATCH BASIN, 4' DIA., TYPE 1 FRAME, OPEN LID	618.70	615.20 NE
39	5+33	5' LT	R.D. STORM SEWER MANHOLE, 5' DIA., TYPE 1 FRAME, CLOSED LID	619.10	614.50 NE 609.77 E 606.45 W
40	5+42	18' LT	R.D. CATCH BASIN, 4' DIA., TYPE 1 FRAME, OPEN LID	618.30	614.80 SE 614.70 SW
41	5+57	11' RT	INLET, TYPE A, TYPE 1 FRAME, OPEN LID	618.75	615.25 NW
W6	5+13	30' LT	VALVE VAULT, TYPE A, 4' DIA., TYPE 1 FRAME, CLOSED LID	618.50	-



PIPE NO	LENGTH	DIA.	TYPE	SLOPE	C.Y.T.B.
32	55'	42"	SS, TY-2, RCCP, CL-III	1.00%	161.8
33	3'	12"	SS, PVC, SDR 26	1.00%	0.5
34	50'	12"	SS, PVC, SDR 26	1.00%	2.9
34A	35'	10"	SS, PVC, SDR 26	1.00%	2.7
35	280'	42"	SS, TY-2, RCCP, CL-III	0.09%	458.0
36	20'	10"	SS, PVC, SDR 26	1.00%	1.5
37	15'	10"	SS, PVC, SDR 26	1.33%	0.9
38	30'	42"	SS, TY-2, RCCP, CL-III	1.00%	75.0
39	15'	12"	SS, PVC, SDR 26	1.33%	1.3

**PROPOSED IMPROVEMENTS**



**HANCOCK ENGINEERING**  
 Civil Engineers  
 Municipal Consultants  
 Established 1911  
 9413 Roosevelt Road  
 Woodstock, Illinois 60093-2700  
 Phone: 708/565-4100  
 Fax: 708/565-1212

**BROOKFIELD GRAND BOULEVARD IMPROVEMENTS LINCOLN AVENUE UTILITIES PLAN AND PROFILE**

REVISION: \_\_\_\_\_  
 DRAWN BY: LEVICW/MK  
 CHECKED BY: JCG  
 DATE: 01-09-09  
 SCALE: 1"=20'H. & 1"=4'V.  
 E.H.E. PROJECT NO. : 125-08-13501

Drawing file: W:\Projects\12508135 - Grand Blvd Grant to Veterans\Grand Blvd\Grand Blvd.dwg Jun 09, 2009 - 10:52am