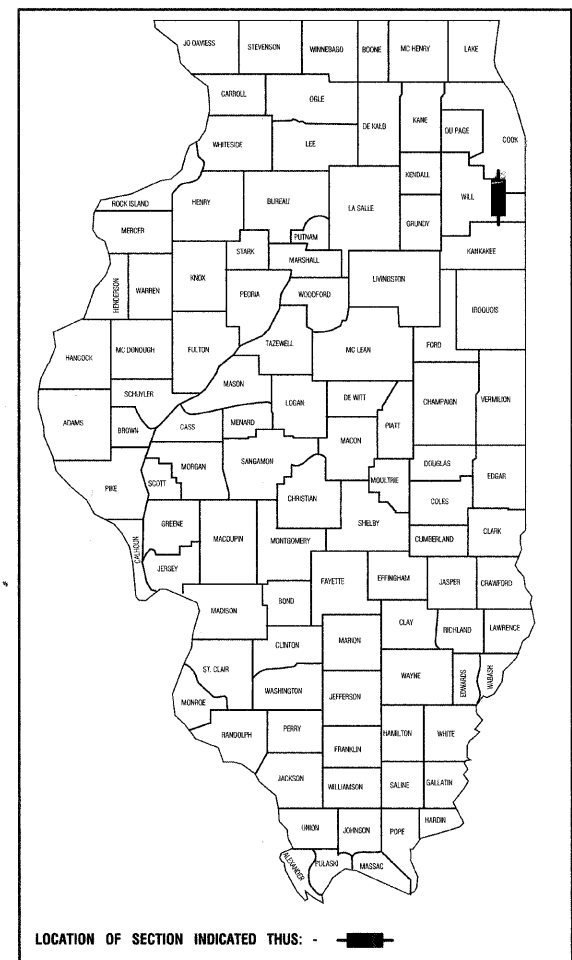


F. A. A. NO.	SECTION	COUNTY	TOTAL SHEETS	SHEET NO.
4304	04-00045-00-FP	WILL	033	001
STA.		TO STA.		
FED. ROAD DIST. NO.		ILLINOIS	FED. AID PROJECT	

CONTRACT #63108



STATE OF ILLINOIS DEPARTMENT OF TRANSPORTATION
DIVISION OF HIGHWAYS

Approved: *[Signature]*
President, Village of Peotone
Local Agency, Position

Passed: DECEMBER 16, 2008
[Signature]
District 1 Engineer of Local Roads & Streets

Released for Bid Based on Limited Review: DECEMBER 17, 2008
[Signature]
Deputy Director of Highways, Region 1 Engineer

DESCRIPTION OF IMPROVEMENT
THIS IMPROVEMENT CONSISTS OF EARTH EXCAVATION, PAVEMENT REMOVAL, HOT-MIX ASPHALT, CURB AND GUTTER, SIDEWALK, DRIVEWAYS, PAVEMENT MARKINGS, STORM SEWER, WATER MAIN, LANDSCAPING, AND ALL INCIDENTAL WORK AS NECESSARY TO COMPLETE THE IMPROVEMENT SHOWN HEREIN AND AS DESCRIBED IN THE SPECIFICATIONS.

PREPARED BY OR UNDER THE DIRECT SUPERVISION OF:
[Signature]
12/19/08
LICENSE EXPIRES: 11/30/09

STATE OF ILLINOIS
DEPARTMENT OF TRANSPORTATION
DIVISION OF HIGHWAYS
PLANS FOR PROPOSED FEDERAL AID HIGHWAY
RATHJE ROAD
WILMINGTON-PEOTONE RD. TO CORNING AVE.
ROAD RECONSTRUCTION
PROJECT: M-8003 (575)
SECTION NO.: 04-00045-00-FP
JOB NO.: C 91 147-06
VILLAGE OF PEOTONE
WILL COUNTY

INDEX OF SHEETS

1. COVER SHEET
- 2.-3. SUMMARY OF QUANTITIES
4. GENERAL NOTES
5. TYPICAL CROSS SECTIONS
6. DETOUR PLAN
- 7.-9. PLAN AND PROFILE
- 10.-12. DRAINAGE AND UTILITIES
13. PAVEMENT MARKING PLAN AND SIGNING PLAN
14. LANDSCAPING AND EROSION CONTROL PLAN
- 15.-18. IDOT DISTRICT 1 DETAILS
19. CONSTRUCTION DETAILS
- 20.-33. CROSS SECTIONS

STATE STANDARDS

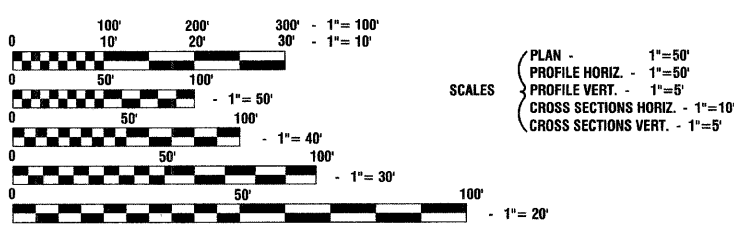
- 000001-05 STANDARD SYMBOLS, ABBREVIATIONS AND PATTERNS
- 280001-04 TEMPORARY EROSION CONTROL SYSTEMS
- 424001-05 CURB RAMPS FOR SIDEWALKS
- 542301-01 PRECAST REINFORCED CONCRETE FLARED END SECTION
- 602001-01 CATCH BASINS, TYPE A
- 602301-02 INLET, TYPE A
- 602401-02 MANHOLE, TYPE A
- 602501-01 VALVE VAULT, TYPE A
- 602601-02 PRECAST REINFORCED CONCRETE FLAT TOP SLAB
- 602701-02 CAST IRON STEPS
- 604001-03 FRAME AND LIDS, TYPE 1
- 604051-03 FRAME & GRATE, TYPE 11
- 606001-04 CONCRETE CURB & COMBINATION CONCRETE CURB & GUTTER
- 701306-02 LANE CLOSURE, 2L, 2W, SLOW MOVING OPERATIONS - DAY ONLY, FOR SPEEDS > 45 MPH
- 701501-05 URBAN LANE CLOSURE, 2L, 2W, UNDIVIDED
- 701901-01 TRAFFIC CONTROL DEVICES
- 720001-01 SIGN PANEL MOUNTING DETAIL
- 720006-02 SIGN PANEL ERECTION DETAILS
- 720011-01 METAL POSTS FOR SIGNS, MARKERS & DELINEATORS
- 729001-01 APPLICATIONS OF TYPES A & B METAL POSTS (FOR SIGNS & MARKERS)
- 780001-02 TYPICAL PAVEMENT MARKINGS

DESIGN DESIGNATION - RATHJE ROAD ADT 7,000 (2030) - COLLECTOR
PV=6,650 SU=280 MU=70

2005 ADT - 2,000
2030 ADT - 7,000

EXISTING SPEED LIMIT - 30 MPH
PROPOSED SPEED LIMIT - 30 MPH

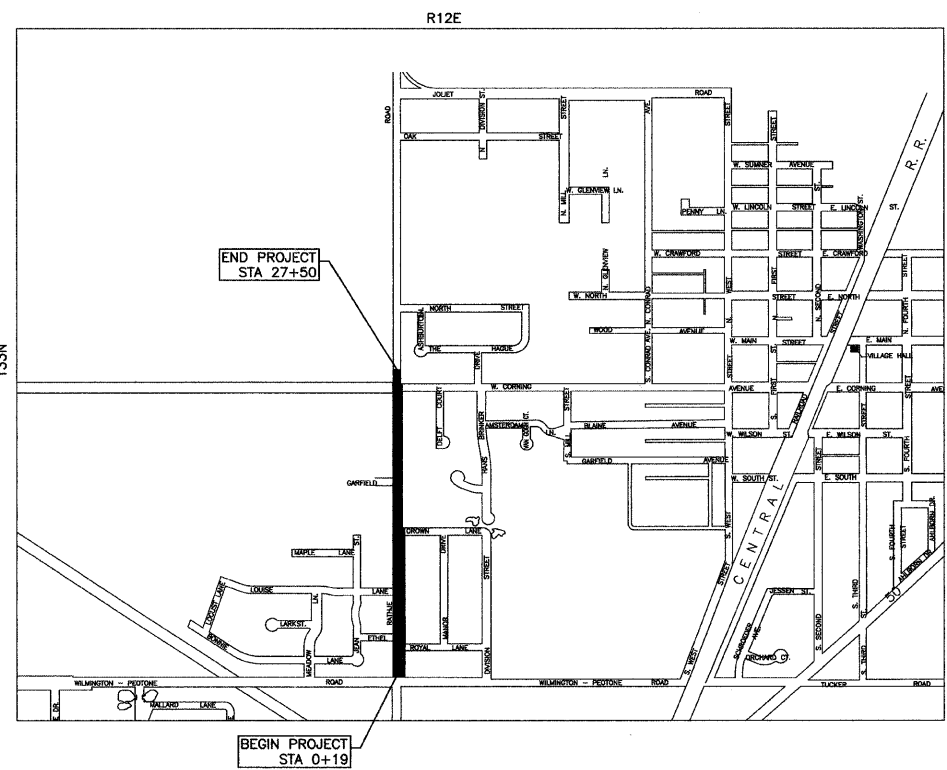
DESIGN PERIOD - 20 YEARS
DESIGN SPEED LIMIT - 35 MPH
STREET CLASSIFICATION - CLASS II ROAD



FULL SIZE PLANS HAVE BEEN PREPARED USING STANDARD ENGINEERING SCALES, REDUCED SIZED PLANS WILL NOT CONFORM TO STANDARD SCALES, IN MAKING MEASUREMENTS ON REDUCED PLANS, THE ABOVE SCALES MAY BE USED.

J. U. L. I. E.
JOINT UTILITY LOCATION INFORMATION FOR EXCAVATION
1-800-892-0123 or 811

CONTRACT NO. 63108



PROJECT LOCATION

GROSS LENGTH= 2731 FEET = 0.52 MILES
NET LENGTH= 2731 FEET = 0.52 MILES

PRINTED BY THE AUTHORITY OF THE STATE OF ILLINOIS

FIELD ENGINEER: MELCHOR MANGABA 847-705-4408
CONSULTANTS: ROBINSON ENGINEERING, LTD. 708-331-6700