

F. A. U. NO.	SECTION	COUNTY	TOTAL SHEETS	SHEET NO.
4304	04-00045-00-FP	WILL	033	007
STA.		TO STA.		
FED. ROAD DIST. NO.		FED. AID PROJECT		

CONTRACT #63108



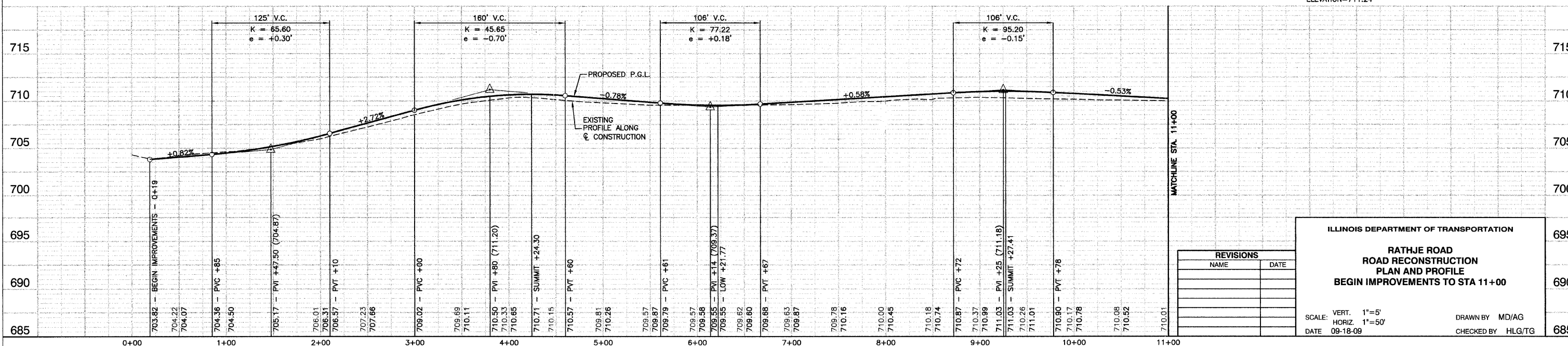
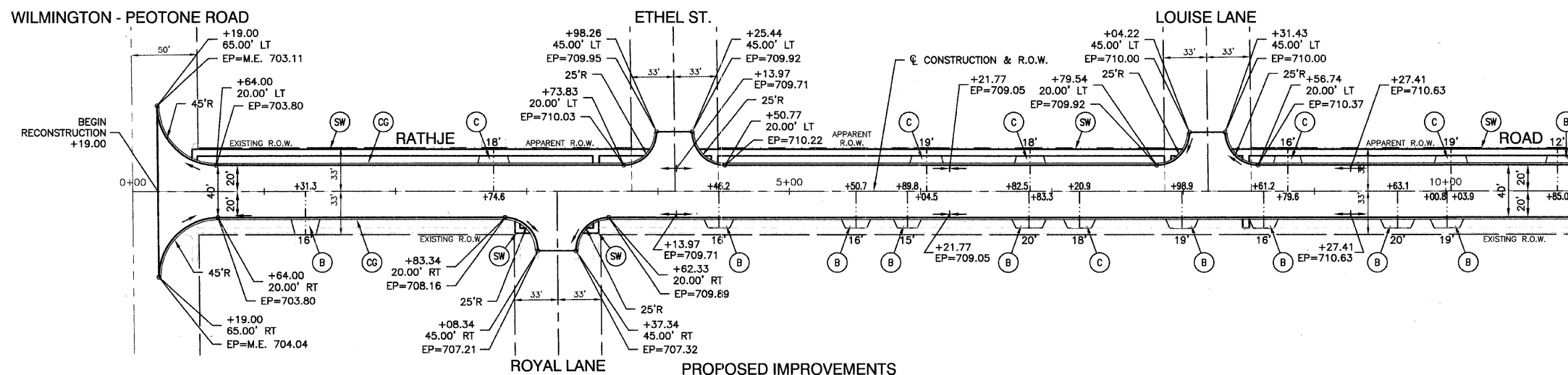
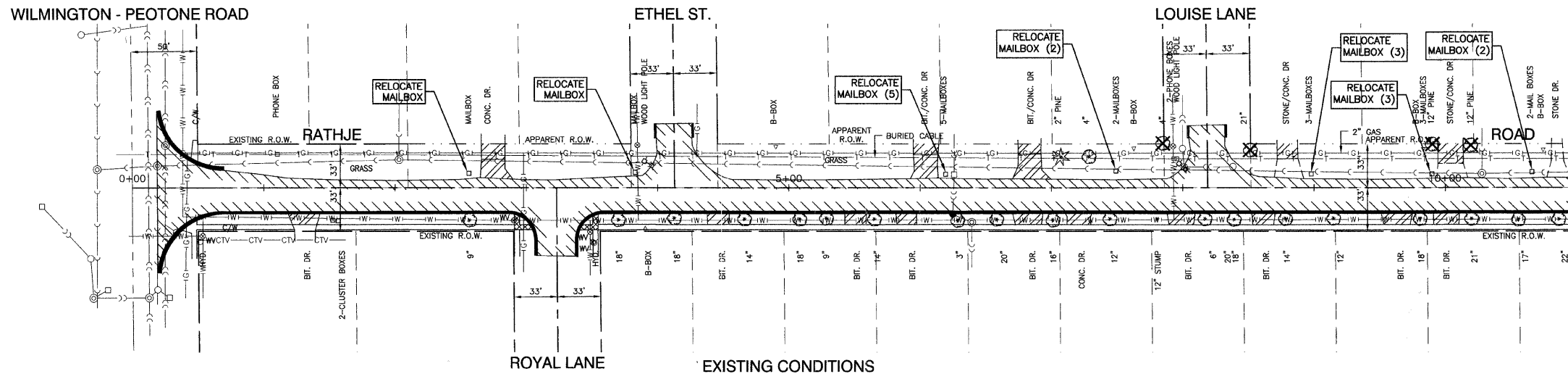
**LEGEND**

- TREE TO BE REMOVED
- CONC. CURB AND GUTTER REMOVAL
- HMA PAVEMENT REMOVAL
- SIDEWALK REMOVAL
- DRIVEWAY PAVEMENT REMOVAL
- P.C.C. SIDEWALK (5" CONC, 3" AGG BASE - INCIDENTAL TO PCC SIDEWALK)
- P.C.C. DRIVEWAY, 6"
- HMA DRIVEWAY
- CURB & GUTTER TYPE B-6.12

- NOTE:**
- P.C.C. SIDEWALK SHALL BE 6" THICK THRU ALL DRIVEWAYS.
  - ALL P.C.C. SIDEWALK SHALL BE 5' WIDE EXCEPT WHERE SHOWN ON PLANS.
  - ALL CURB RAMP FOR SIDEWALK SHALL INCLUDE DETECTABLE WARNINGS AND DEPRESSED CURB PER CURRENT HIGHWAY STANDARDS.
  - OFFSETS ARE NOTED FROM CL OF CONSTRUCTION.
  - RESIDENTIAL DRIVEWAYS HAVE 3' FLARE UNLESS OTHERWISE NOTED.

**BENCH MARK:**

BENCH MARK #26  
R.R. SPIKE IN SOUTH FACE OF POWER POLE, 1ST PP  
EAST OF RATHJE RD., NORTH SIDE CORNING AVE.  
ELEVATION=711.24



REVISIONS	
NAME	DATE

ILLINOIS DEPARTMENT OF TRANSPORTATION

**RATHJE ROAD  
ROAD RECONSTRUCTION  
PLAN AND PROFILE  
BEGIN IMPROVEMENTS TO STA 11+00**

SCALE: VERT. 1"=5'  
HORIZ. 1"=50'  
DATE 09-18-09

DRAWN BY MD/AG  
CHECKED BY HLG/TG