

STATE OF ILLINOIS
DEPARTMENT OF TRANSPORTATION
DIVISION OF HIGHWAYS

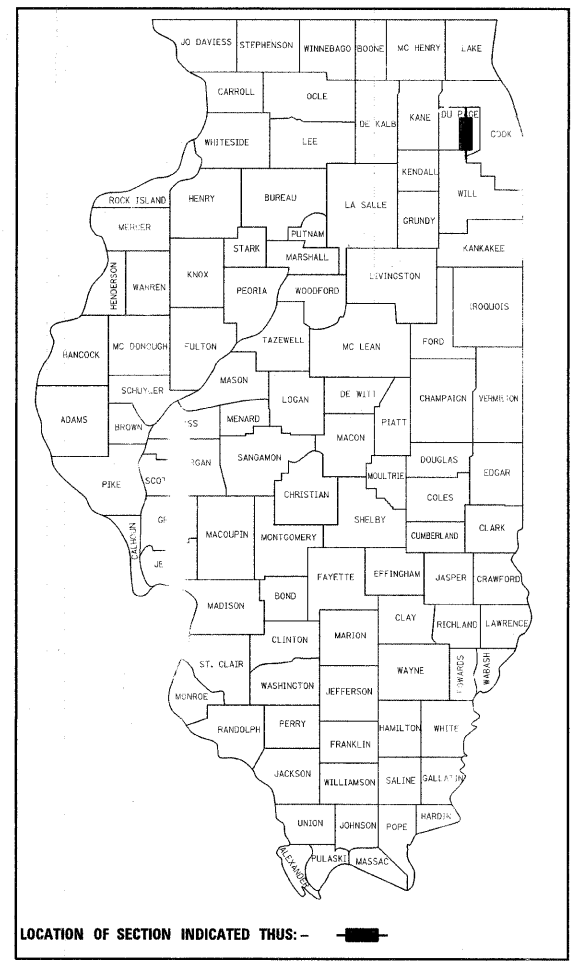
**PROPOSED
FEDERAL AID PROJECT**

HERITAGE BIKEWAY
TIMBER TRAILS ROAD TO WOODWARD AVENUE
SECTION: 06-00055-00-BT
PROJECT NO.: M-CMM-9003 (154)
JOB NO: C-91-171-09
VILLAGE OF WOODRIDGE
DuPAGE COUNTY

INDEX OF SHEETS

SHEET NO.	DESCRIPTION
1	TITLE
2	GENERAL NOTES, STANDARDS
3	SUMMARY OF QUANTITIES
4	TYPICAL SECTIONS
5	ALIGNMENT AND TIES PLAN
6-8	PLAN AND PROFILE SHEETS
9	REMOVAL PLAN
10-11	STRUCTURE PLANS
12-24	CROSS SECTIONS
25-27	MISCELLANEOUS DETAILS

HIGHWAY STANDARDS, SEE SHEET NO. 2

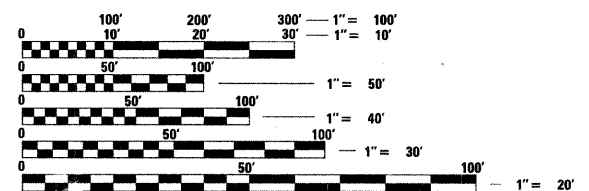


TRAFFIC DATA

ADT (2030) = 200 CYCLISTS
POSTED SPEED = 20 MPH

PROJECT LENGTH

SEGMENT A = 241.95 FEET
SEGMENT B = 190.15 FEET
SEGMENT C = 895.47 FEET
TOTAL = 1,327.57 FEET



FULL SIZE PLANS HAVE BEEN PREPARED USING STANDARD ENGINEERING SCALES. REDUCED SIZED PLANS WILL NOT CONFORM TO STANDARD SCALES. IN MAKING MEASUREMENTS ON REDUCED PLANS, THE ABOVE SCALES MAY BE USED.

J.U.I.E.
JOINT UTILITY LOCATION INFORMATION FOR EXCAVATION
1-800-892-0123

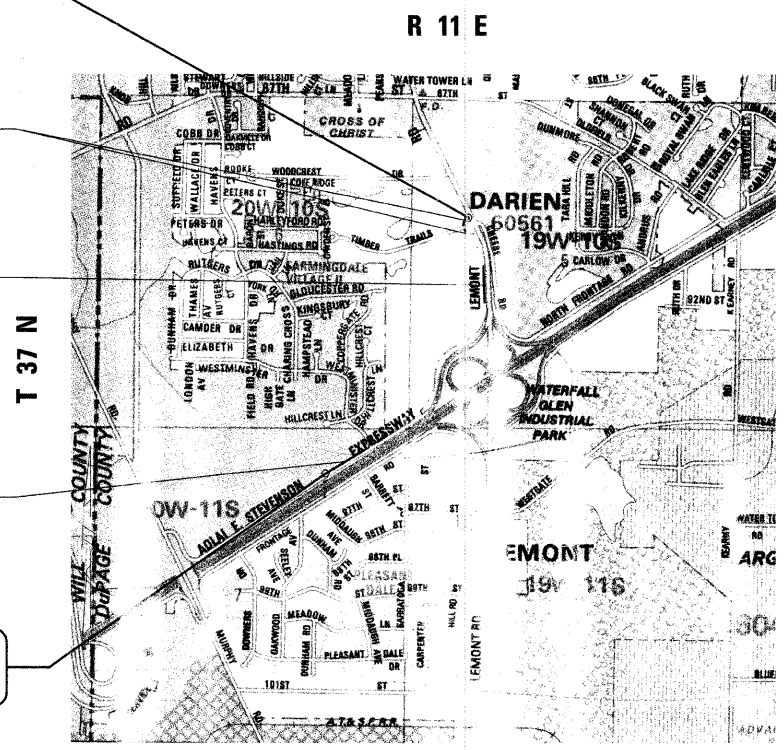
END PROJECT
STATION 77+76.38

SEGMENT A (NORTH)
BEGIN STA. 75+00
END STA. 77+76.38

SEGMENT B (MIDDLE)
BEGIN STA. 50+00
END STA. 51+90.15

SEGMENT C (SOUTH)
BEGIN STA. 25+00
END STA. 33+95.47

BEGIN PROJECT
STATION 25+00



LOCATION MAP
NOT TO SCALE

GROSS LENGTH AND NET LENGTH 1,328 FEET (0.25 MILES)

STATE OF ILLINOIS
DEPARTMENT OF TRANSPORTATION
DIVISION OF HIGHWAYS

Approved 12/22, 2008
Lill A. Khan
VILLAGE OF WOODRIDGE, VILLAGE ENGINEER

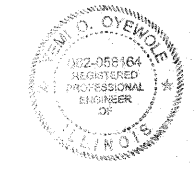
Passed DECEMBER 29 2008
CHUCK HOLT
DISTRICT ENGINEER OF LOCAL ROADS AND STREETS

Released for Bid
Based on Limited Review DECEMBER 29 2008
Diana M. O'Keefe
DEPUTY DIRECTOR OF HIGHWAYS, REGION 1

PRINTED BY THE AUTHORITY
OF THE STATE OF ILLINOIS

PLANS PREPARED BY:

URS
100 S. WACKER DR., SUITE 500 TEL (312) 339-1000
CHICAGO IL, 60606 FAX (312) 339-4198



J. O. O'Keefe
DATE: 12/22 2008
EXPIRES: 12/22 2009

FIELD ENGINEER: MARLIN SOLOMON, (847) 705-4407

CONTRACT NO. 63113