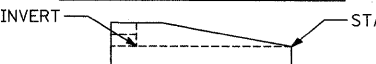


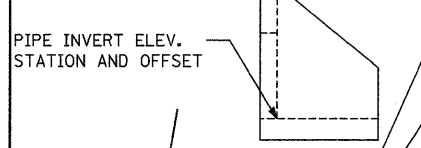
BOUNDRY LINES/SYMBOLS	EXISTING	PROPOSED	BOUNDRY LINES/SYMBOLS
CULVERT			CULVERT CALLOUTS
CULVERT END SECTION			STRUCTURE CALLOUTS
HEADWALL/ENDWALL			HEADWALL CALLOUTS
INLET			
PAVED DITCH			
PIPE UNDERDRAIN			

NOTE:  
1. SEE SCHEDULE FOR LENGTH

**CONCRETE HEADWALL FOR PIPE DRAIN NOTATION**



**REINFORCED CONCRETE END SECTIONS NOTATION**



PIPE INVERT ELEV.  
STATION AND OFFSET

FILE NAME = c:\new\_work\purdett\grant\pdm\44287\4484423.dgn

**Ciorba Group, Inc.**  
CONSULTING ENGINEERS  
5507 North Cumberland Avenue, Suite 402  
Chicago, Illinois 60656  
Tel. 773.775.4009 Fax 773.775.4014

USER NAME = grantpm	DESIGNED - AL	REVISED -
PLOT SCALE = 50.0000' / IN.	DRAWN - EPS	REVISED -
PLOT DATE = Mon Dec 15 08:36:31	CHECKED - DMM	REVISED -
	DATE - Mon Dec 15 08:36:31	

**STATE OF ILLINOIS  
DEPARTMENT OF TRANSPORTATION**

**I-80  
PROPOSED DRAINAGE PLAN  
STA. 51+53 TO STA. 80+00**

SCALE: 1" = 50' SHEET NO. OF SHEETS

F.A.I. RTE. 80	SECTION (81-1R-1)	COUNTY ROCK ISLAND	TOTAL SHEETS 292	SHEET NO. 143
CONTRACT NO. 64933				
FED. ROAD DIST. NO. [ILLINOIS] FED. AID PROJECT				