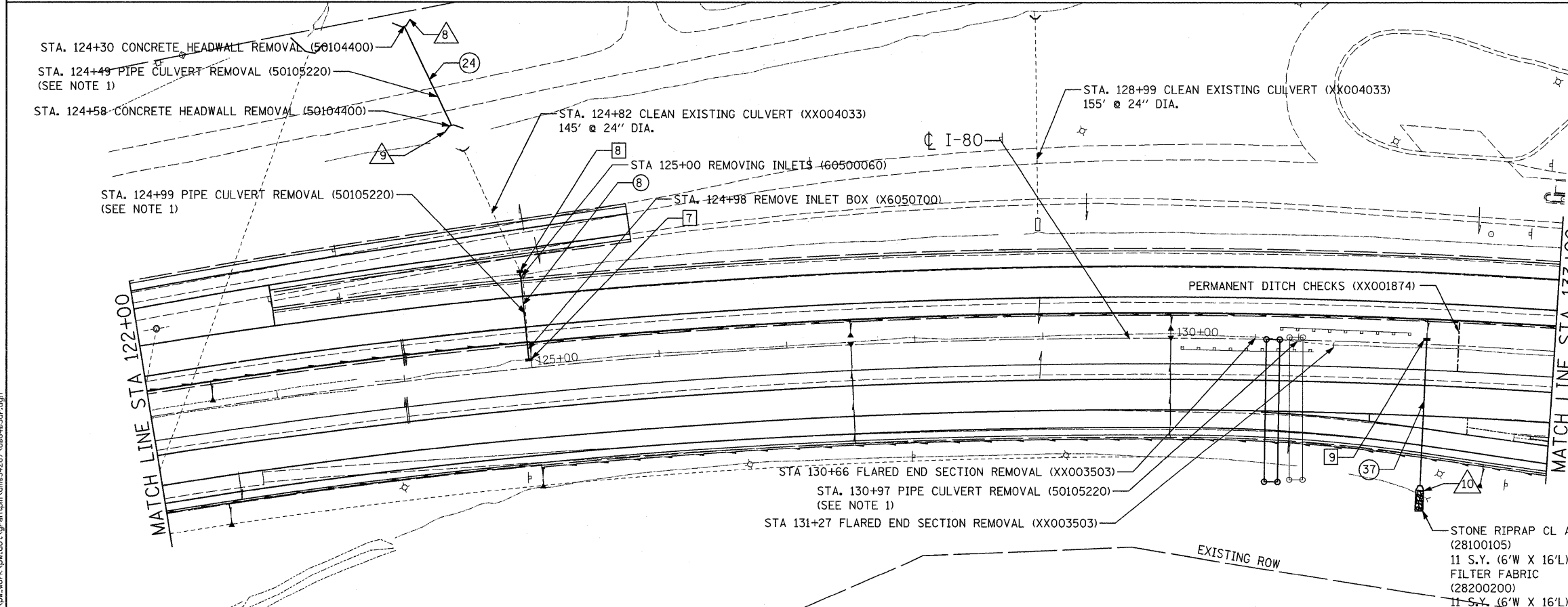


7 REINFORCED CONCRETE END SECTIONS 24" STA. 111+00/105.6' LT CONCRETE STRUCTURES 1.0 CU YD (50300225) REINFORCEMENT BARS, EPOXY COATED 35 LBS (50800205) INV.- 686.20

6 FLUSH INLET BOX FOR MEDIAN, STANDARD 542546 (54244405) STA. 111+00/3.1' LT RIM- 689.11 INV.- 686.50

6 PIPE CULVERTS, CL. A, TY. 2 24" (542A1069) 101' @ 0.30% TBF= 30 CY



8 REINFORCED CONCRETE END SECTIONS 36" (15° SKEW) STA. 124+30/275' LT CONCRETE STRUCTURES 2.5 CU YD (50300225) REINFORCEMENT BARS, EPOXY COATED 155 LBS (50800205) INV.- 649.70

9 REINFORCED CONCRETE END SECTIONS 36" (15° SKEW) STA. 124+58/194' LT CONCRETE STRUCTURES 2.5 CU YD (50300225) REINFORCEMENT BARS, EPOXY COATED 155 LBS (50800205) INV.- 665.28

10 REINFORCED CONCRETE END SECTIONS 24" STA. 132+00/112.1' RT CONCRETE STRUCTURES 1.0 CU YD (50300225) REINFORCEMENT BARS, EPOXY COATED 35 LBS (50800205) INV.- 678.63

7 FLUSH INLET BOX FOR MEDIAN, STANDARD 542546 (54244405) STA. 124+97/3.9' LT RIM- 680.32 INV.- 676.63

8 PIPE CULVERTS, CL. A, TY. 2 24" (542A1069) 69' @ 0.50% TBF= 24 CY

8 CB, TA, 4'-DIA. TIF, OL (60200105) STA. 124+98/76.4' LT RIM- 682.46 INV.- 676.29

24 PIPE CULVERTS, CL. A, TY. 2 36" (542A1081) 86' @ 18.22% TBF= 30 CY

9 FLUSH INLET BOX FOR MEDIAN, STANDARD 542546 (54244405) STA. 132+00/3.9' LT RIM- 682.91 INV.- 678.91

37 PIPE CULVERTS, CL. A, TY. 2 24" (542A1069) 116' @ 0.24% TBF= 64 CY

**Ciorba Group, Inc.**  
CONSULTING ENGINEERS  
5507 North Cumberland Avenue, Suite 402  
Chicago, Illinois 60656  
Tel. 773.775.4059 Fax 773.775.4014

USER NAME = grentpm	DESIGNED - AL	REVISED -
PLOT SCALE = 50.0000' / IN.	DRAWN - EPS	REVISED -
PLOT DATE = Mon Dec 15 08:36:33 2008	CHECKED - DMM	REVISED -
DATE = Mon Dec 15 08:36:33 2008	DATE = Mon Dec 15 08:36:33 2008	REVISED -

**STATE OF ILLINOIS  
DEPARTMENT OF TRANSPORTATION**

**I-80  
PROPOSED DRAINAGE PLAN  
STA. 108+00 TO STA. 133+00**

SCALE: 1" = 50' SHEET NO. OF SHEETS

F.A.I. RTE.	SECTION	COUNTY	TOTAL SHEETS	SHEET NO.
80	(81-1)R-1	ROCK ISLAND	292	145
CONTRACT NO. 64933				
FED. ROAD DIST. NO. [ILLINOIS] FED. AID PROJECT				