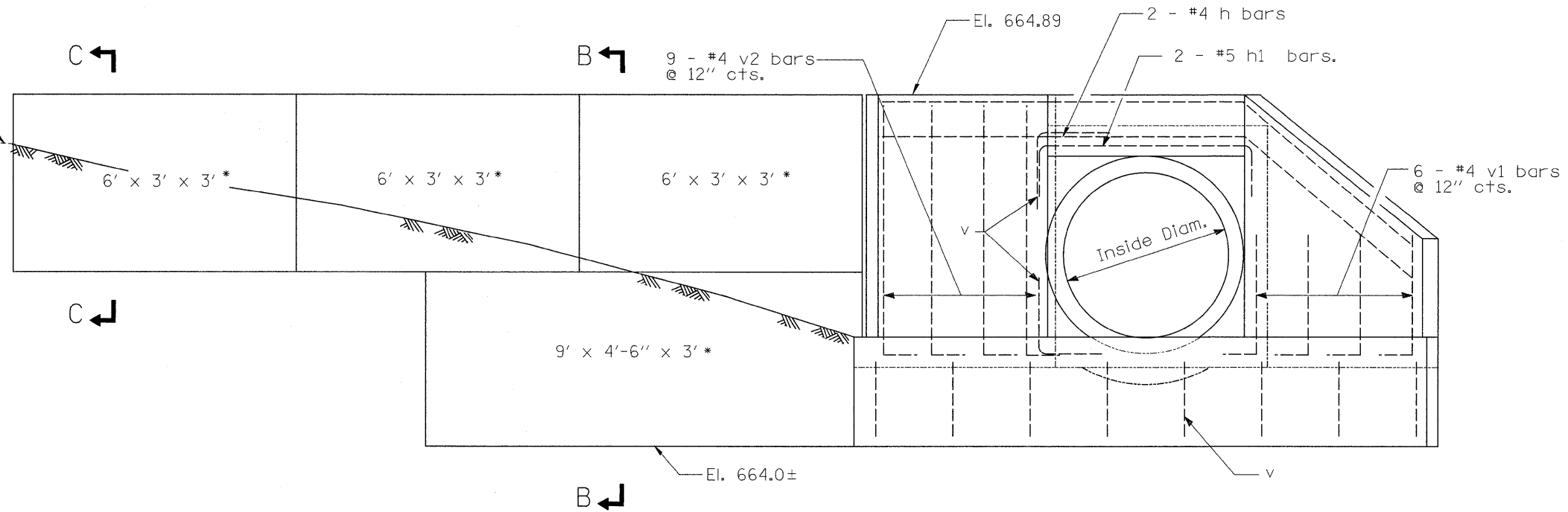
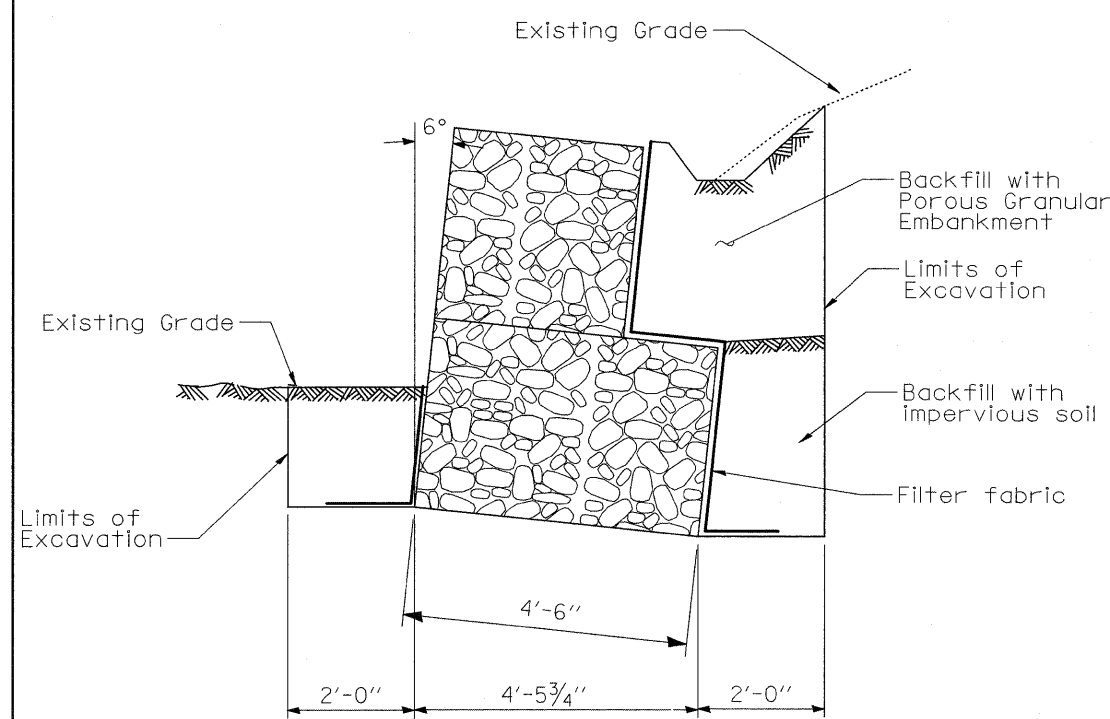


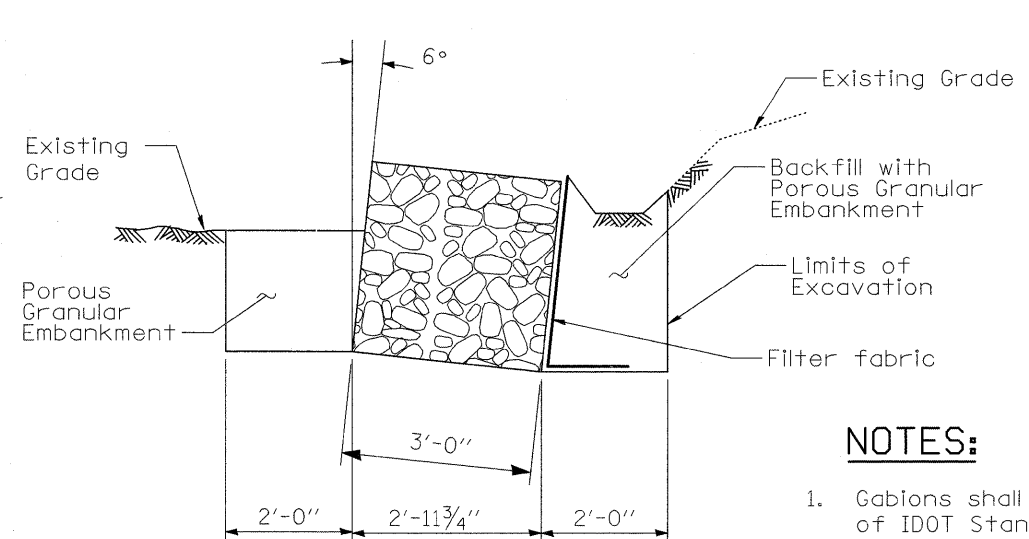
Existing Ground
El. 669.0 ±



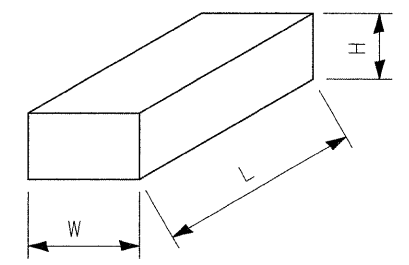
END VIEW



SECTION B-B



SECTION C-C



* Gabion dimensions are L x W x H

NOTES:

- Gabiions shall conform the requirements of Section 284 of IDOT Standard Specifications.
- Gabiions shall be filled with stone or broken concrete from demolished concrete end sections. The stone shall be well graded with dimensions according to Section 284 of IDOT Standard Specifications. The broken concrete shall have a minimum thickness of 6 in. between unbroken surfaces. Concrete showing excessive popping, spalling, cracking, or any other type of disintegration indicating poor resistance to weathering will not be acceptable. No reinforcing steel or other such material shall be protruding from the broken pieces.
- The cost of Excavation for Gabion wall is included in pay item "Gabiions"

**CULVERT NO. 25
REINFORCED CONCRETE END SECTION
AND GABION WALL DETAILS
STA. 136+87 242.2 FT LT.**

FILE NAME = c:\p\work\pawidat\granitem\ams34287\db8483dr.dgn

Ciorba Group, Inc.
CONSULTING ENGINEERS
5507 North Cumberland Avenue, Suite 402
Chicago, Illinois 60656
Tel. 773.775.4009 Fax 773.775.4014

USER NAME = granitem	DESIGNED - EKM	REVISED -
PLOT SCALE = 50.0000' / IN.	DRAWN - MLB	REVISED -
PLOT DATE = Mon Dec 15 08:36:41 2008	CHECKED - SCD	REVISED -
	DATE - 08/2008	REVISED -

**STATE OF ILLINOIS
DEPARTMENT OF TRANSPORTATION**

**I-80
PROPOSED DRAINAGE STRUCTURES**

SCALE: 1" = 50'
SHEET NO. OF SHEETS STA. TO STA.

F.A.I. RTE. 80	SECTION (81-DR-1)	COUNTY ROCK ISLAND	TOTAL SHEETS 292	SHEET NO. 153
CONTRACT NO. 64933				
FED. ROAD DIST. NO. [ILLINOIS] FED. AID PROJECT				