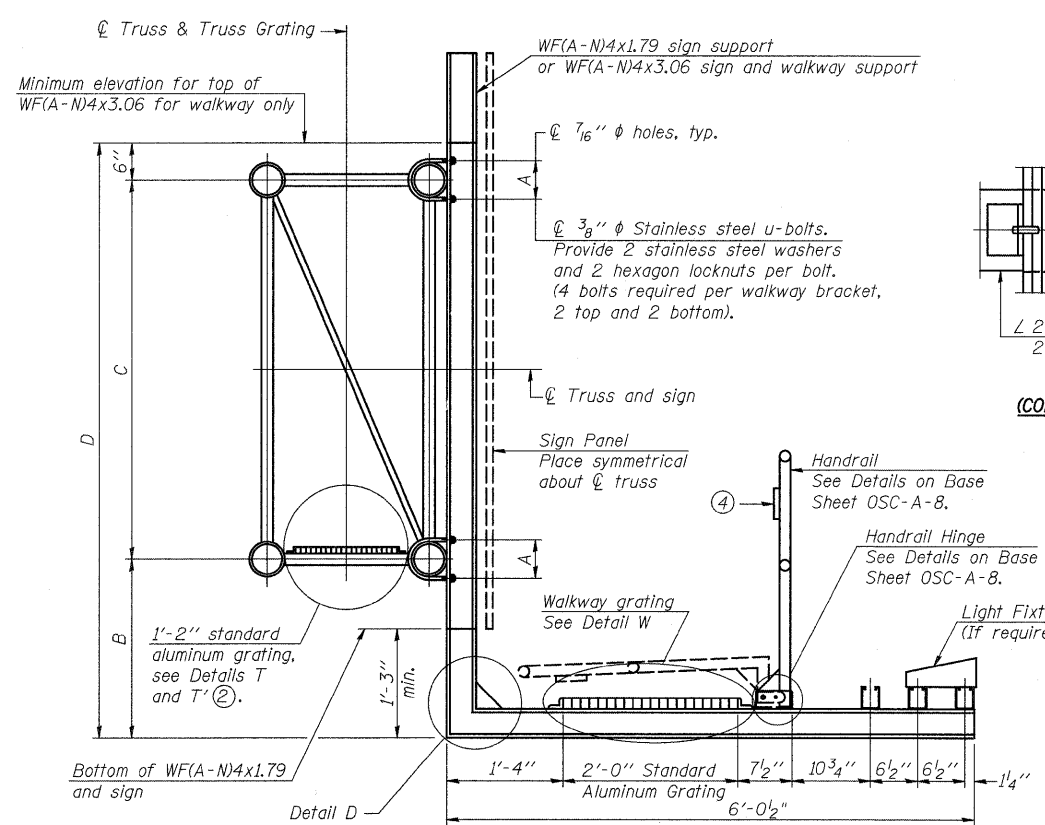
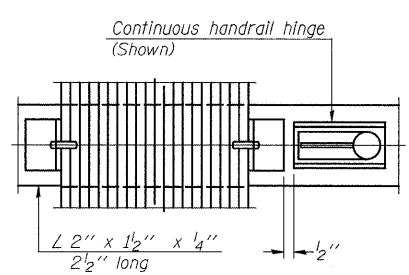


\$FILE# Mon Dec 15 08:26:13 2008 \$NAME\$

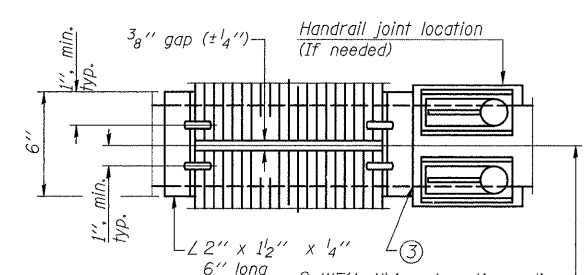


**SECTION B-B**

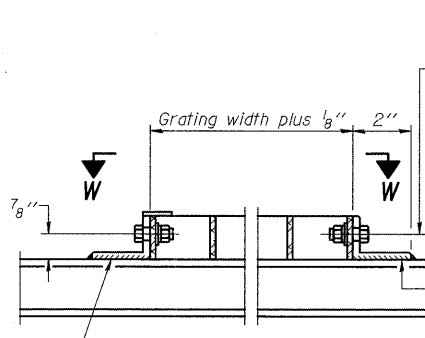
Sign shall be even with the top of the bracket, but it may extend no more than 6" above the top of the bracket for field adjustments.



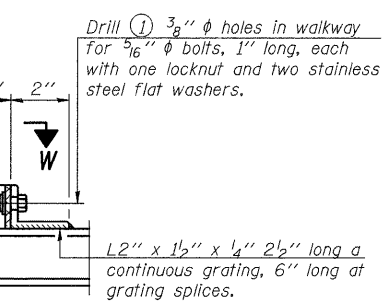
**(CONTINUOUS WALKWAY GRATING)**



**(AT WALKWAY GRATING SPLICE)**

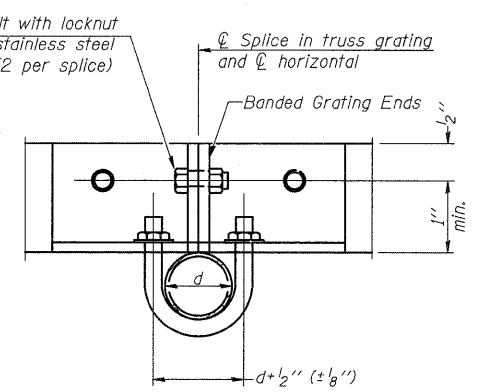


**DETAIL W**  
(Walkway grating)

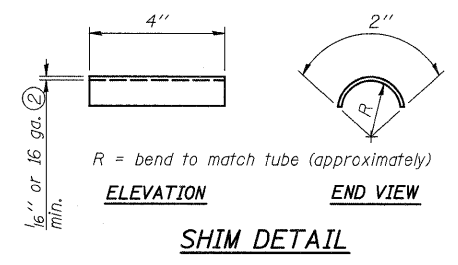


**DETAIL T**  
(Truss grating splice)

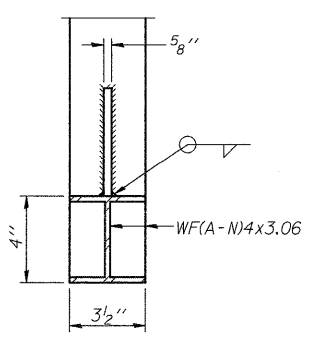
Details not shown same as Detail T. Alternate materials may be used subject to the Engineer's review and approval.



**SECTION T'-T'**

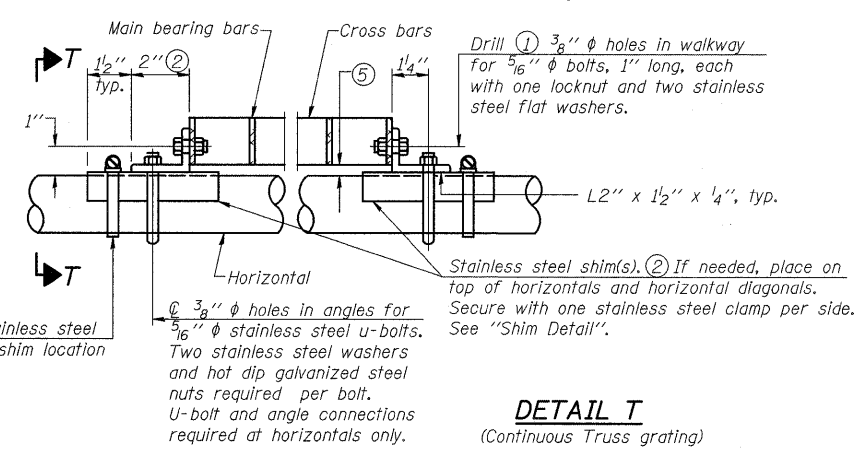


**SHIM DETAIL**  
ELEVATION END VIEW  
R = bend to match tube (approximately)



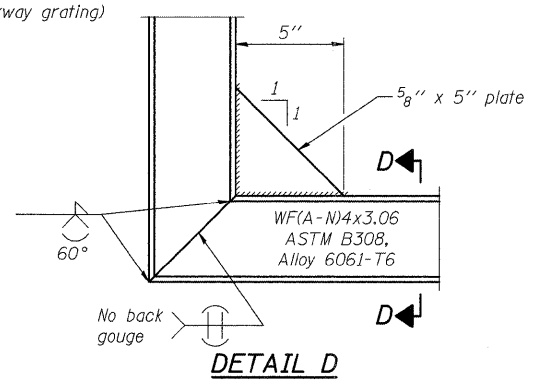
**SECTION D-D**

Screw type stainless steel tube clamp at shim location

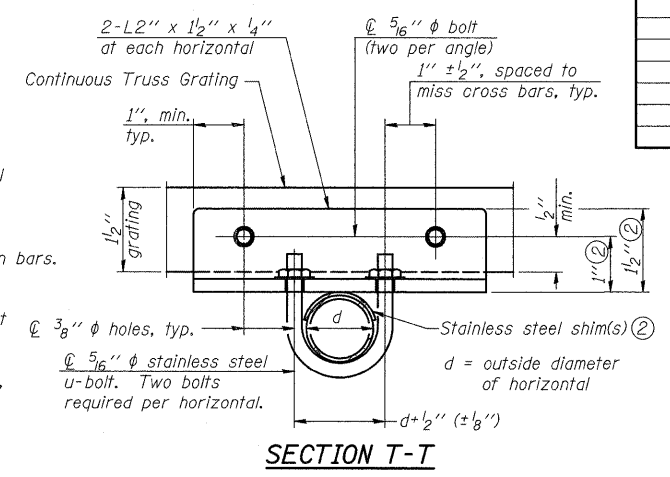


**DETAIL T**  
(Continuous Truss grating)

- ① Drilling holes in grating may be done in shop or field, based on Contractor's preference and subject to accurate alignment.
- ② Stainless steel shims shall be placed as shown in Detail T if needed to compensate for alignment variations between horizontal and diagonal pipes beyond adjustment provided by angles. Thicker shims may be used subject to shims performing properly.
- ③ If Handrail Joint present, weld angle to WF(A-N)4 and 1/4 inch extension bars. (See Base Sheet OSC-A-8.)
- ④ L 1/8 inch x 1/2 inch x 2 inch welded to handrail posts to protect locations that contact grating.
- ⑤ Tube to grating gap may vary from 0 to 1/2 inch, max. to align walkway, allow for camber, etc.



**DETAIL D**



**SECTION T-T**

**SPECIFICATIONS FOR STANDARD ALUMINUM GRATING**  
 Main Bearing Bars (MBB) shall be 3/16 inch x 1/2 inch on 1 3/16 inch centers and conform to ASTM B21 Alloy 6061-T6.  
 Cross bars (CB) shall be 3/16 inch x 1/2 inch on 4 inch centers and conform to ASTM B221 Alloy 6063-T5 or 6061-T6.

**OR**  
 Aluminum Grating with modified "T" sections for main bearing bars shall meet the following requirements:  
 Main bars shall conform to ASTM B221 Alloy 6061-T6 and have a minimum section modulus equal to 0.0705 in.<sup>3</sup> per bar, a depth of 1 1/2 inch, spaced on 1 3/16 inch centers.  
 Cross bars shall conform to ASTM B221 Alloy 6063-T5 or T-42 and spaced on 4 inch centers.

Structure Number	Station	A	B	C	D
2C0811080R00.4	55+40.00	8 1/2"	3' - 9"	7' - 0"	11' - 3"

**CANTILEVER SIGN STRUCTURES  
 WALKWAY DETAILS  
 ALUMINUM TRUSS & STEEL POST**

SHEET NO. 7 OF 9

NUMBER	REVISION	DATE

OSC-A-7 5/16/08  
 DESIGNED E. Mroczek  
 CHECKED -  
 DRAWN M. Balog  
 CHECKED E. Mroczek

**CG Ciorba Group, Inc.**  
 CONSULTING ENGINEERS  
 5507 North Cumberland Avenue, Suite 402 Chicago, Illinois 60656  
 Tel. 773.775.4009 Fax 773.775.4014 Email chicago@ciorba.com

**STATE OF ILLINOIS  
 DEPARTMENT OF TRANSPORTATION**

**SIGN STRUCTURE DETAILS**

F.A.I. RTE. 80	SECTION (81-1R-1)	COUNTY ROCK ISLAND	TOTAL SHEETS 292	SHEET NO. 178
SCALE: SHEET NO. OF SHEETS STA. TO STA.			CONTRACT NO. 64933	
FED. ROAD DIST. NO. ILLINOIS FED. AID PROJECT				