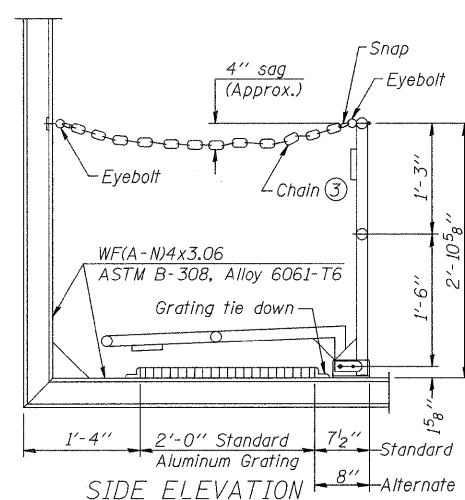
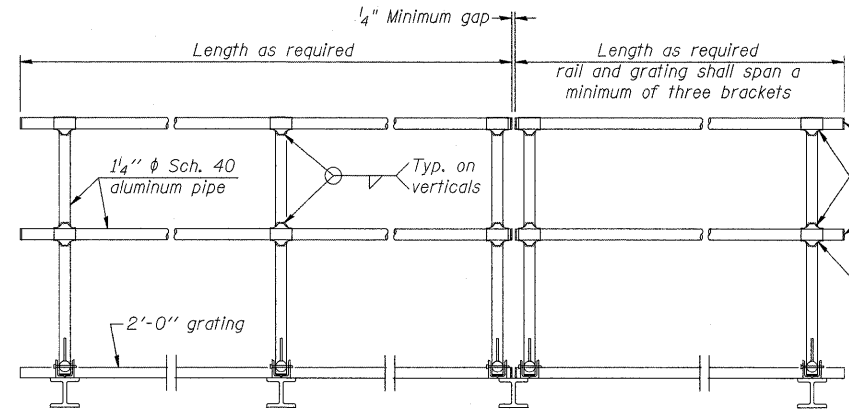


Mon Dec 15 08:26:14 2008 \$NAME\$



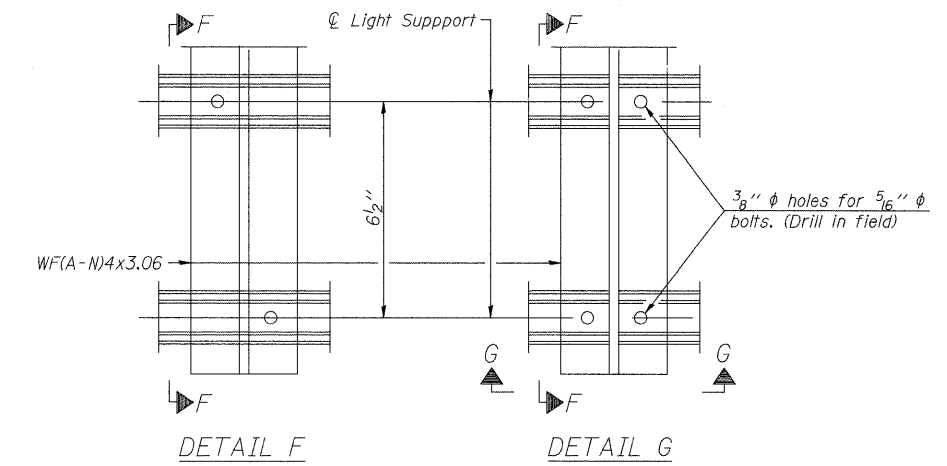
SIDE ELEVATION
(Showing Safety Chain W/O Sign)
Handrail pipe shall be ASTM B241 or B429, Alloy 6063-T6 or Alloy 6061-T6.



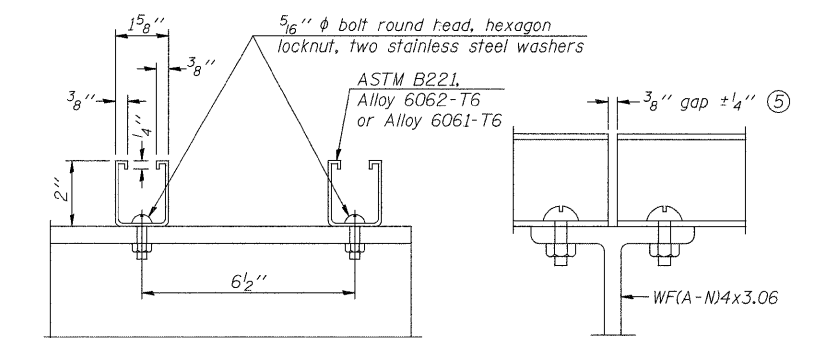
FRONT ELEVATION

HANDRAIL DETAILS

- ① Install standard force-fit end caps or weld 1/8" end plates with 1/8" c.f.w. and grind smooth. (All rail ends)
- ② Horizontal handrail member shall be continuous thru fitting. Provide 7/16" hole in fitting for 3/8" bolt. Field drill 7/16" hole in horizontal rail member. Provide locknut and two stainless steel washers for bolt. (Use 5/16" eyebolts in 7/16" holes on top rail at ends only.)

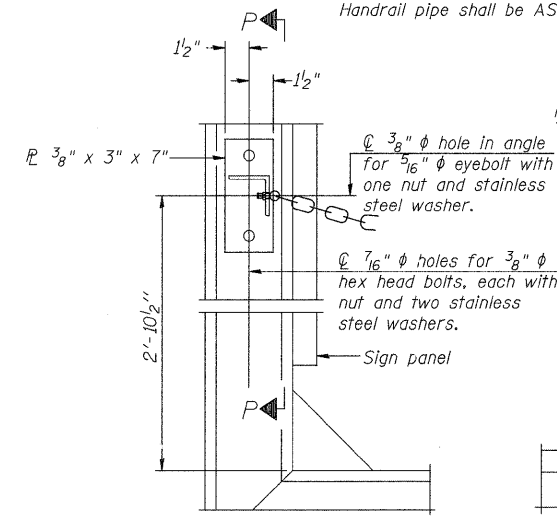


DETAIL F **DETAIL G**

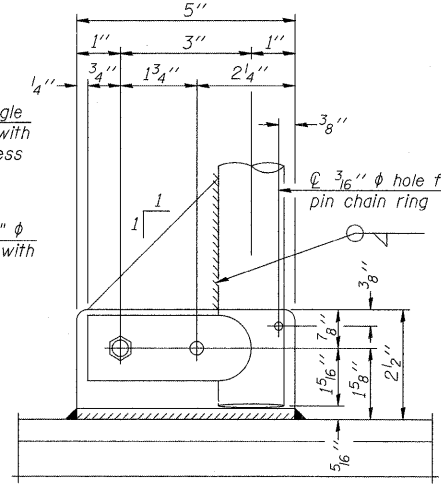


SECTION F-F **SECTION G-G**
LIGHTING FIXTURE MOUNTS (IF REQUIRED)

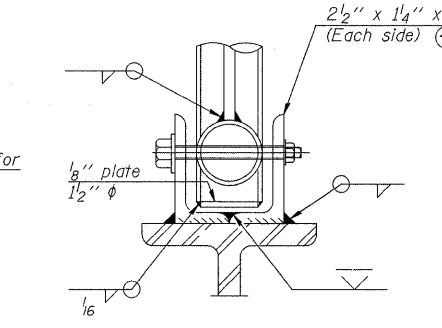
- ⑤ Field cut ends of light support channels shall be free of burrs or hazardous projections and coated with zinc-rich primer or equivalent.



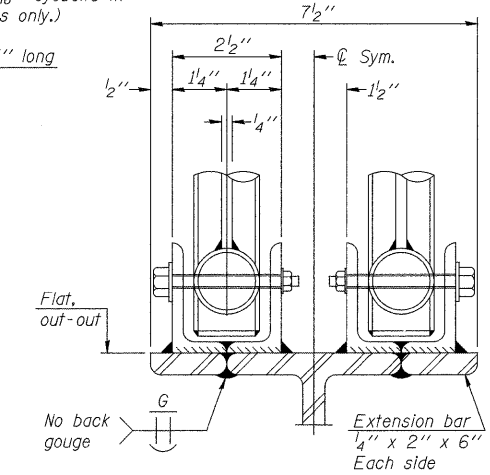
ALTERNATE SAFETY CHAIN ATTACHMENT
(With Sign Present)
Items not shown same as "Side Elevation" of "Handrail Details"



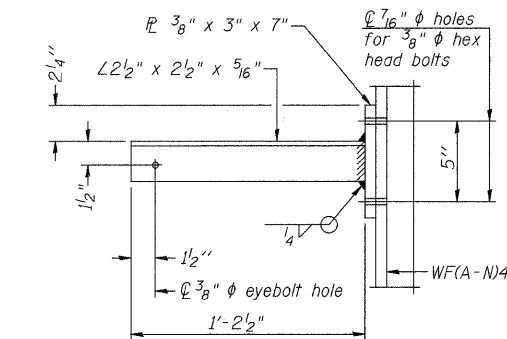
SIDE ELEVATION



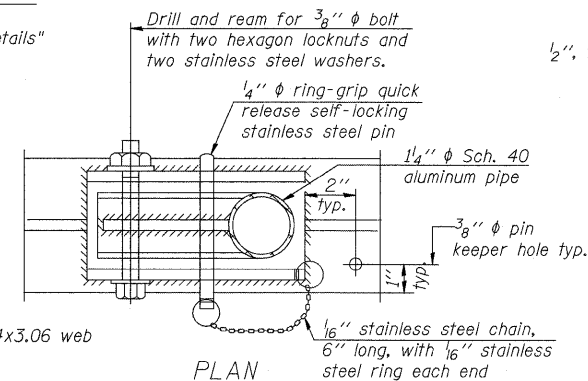
FRONT ELEVATION
Details not shown same as "ELEVATION" at right.



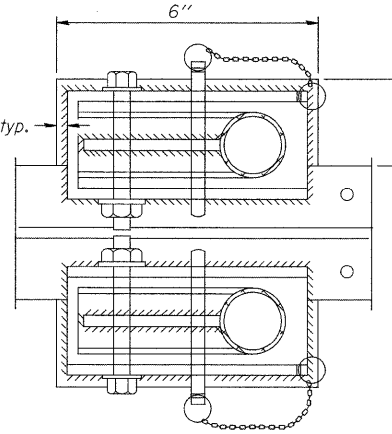
ELEVATION AT HANDRAIL JOINT ④
Details not shown same as "FRONT ELEVATION"



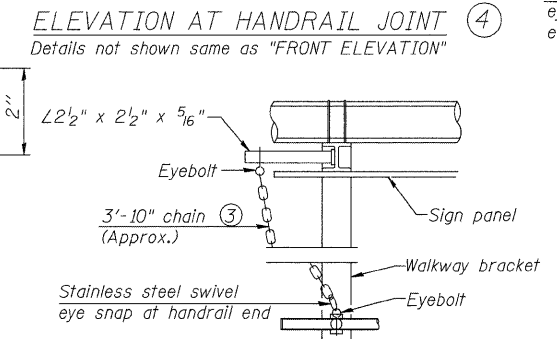
SECTION P-P



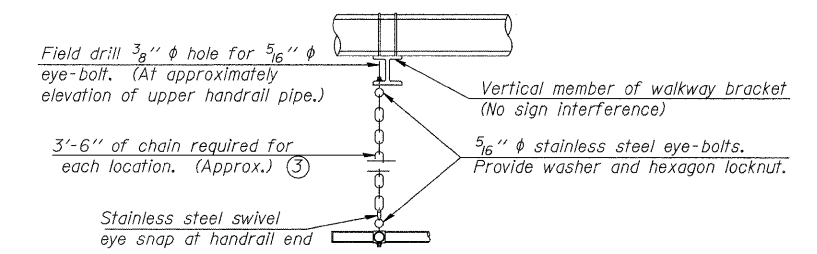
PLAN
DETAIL E HANDRAIL HINGE



PLAN AT HANDRAIL JOINT
Details not shown same as "PLAN"



ALTERNATE SAFETY CHAIN ATTACHMENT
Details not shown similar to "Safety Chain" Details
(Walkway omitted for clarity)



SAFETY CHAIN
One required for each end of each walkway.

- ③ 3/16" Type 304L stainless steel chain, approximately 12 links per foot.
- ④ Extrusions may be used in lieu of the details shown, with approval of the Engineer.

**CANTILEVER SIGN STRUCTURES
HANDRAIL DETAILS
ALUMINUM TRUSS & STEEL POST**

OSC-A-8 5/16/08

DESIGNED	E. Mroczek
CHECKED	-
DRAWN	M. Balog
CHECKED	E. Mroczek

CG Ciorba Group, Inc.
CONSULTING ENGINEERS
5507 North Cumberland Avenue, Suite 402 Chicago, Illinois 60656
Tel. 773.775.4009 Fax 773.775.4014 Email chicgo@ciorba.com

NUMBER	REVISION	DATE

**STATE OF ILLINOIS
DEPARTMENT OF TRANSPORTATION**

SIGN STRUCTURE DETAILS

FILE NAME =	USER NAME = grantpm	DESIGNED =	REVISED =	STATE OF ILLINOIS DEPARTMENT OF TRANSPORTATION	SIGN STRUCTURE DETAILS	F.A.I. RTE.	SECTION	COUNTY	TOTAL SHEETS	SHEET NO.	
or \pwork\pwork\grantpm\dms34287\d08403signstruc.dgn		DRAWN =	REVISED =			80	(81)JR-1	ROCK ISLAND	292	179	
PLOT SCALE = 5.0000' / IN.		CHECKED =	REVISED =			SCALE:		SHEET NO. OF SHEETS STA. TO STA.		FED. ROAD DIST. NO.	ILLINOIS FED. AID PROJECT
PLOT DATE = Mon Dec 15 08:26:14 2008		DATE =	REVISED =							CONTRACT NO. 64933	