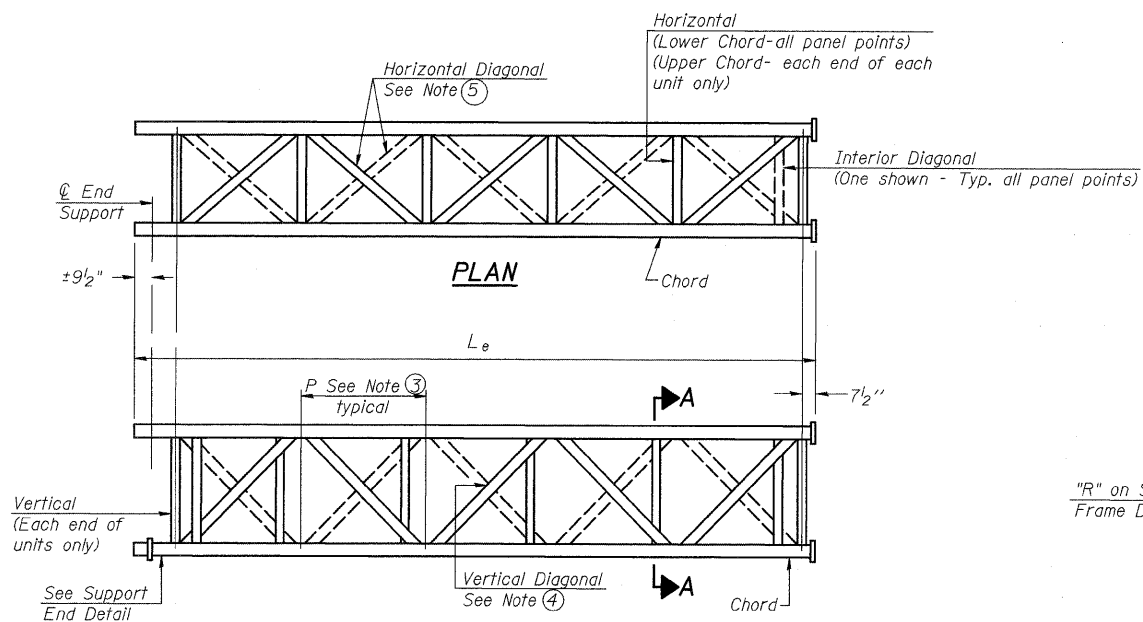
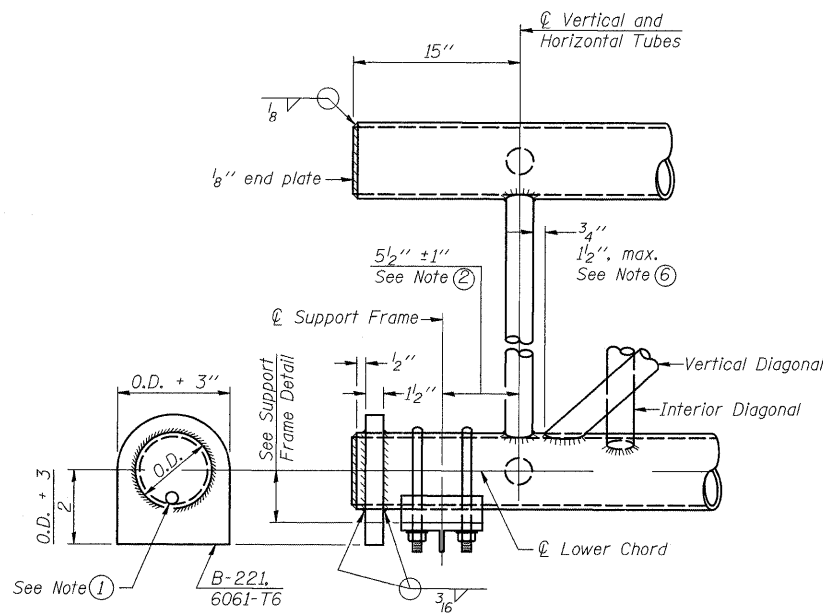


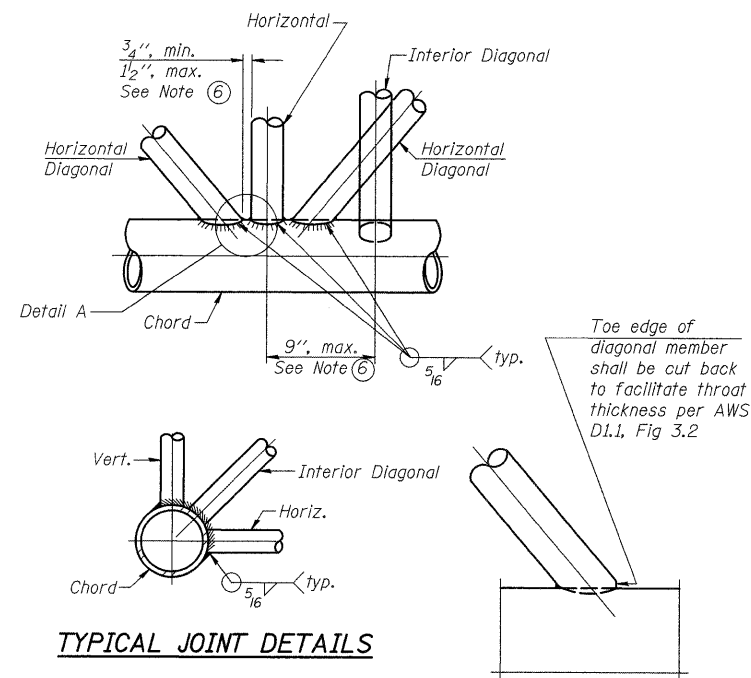
**ELEVATION  
TYPICAL INTERIOR UNIT**  
Even number of panels/interior unit required.



**ELEVATION  
TYPICAL EXTERIOR UNIT**  
Even or odd number of panels/exterior units allowed.



**SUPPORT END DETAIL FOR EXTERIOR UNIT**

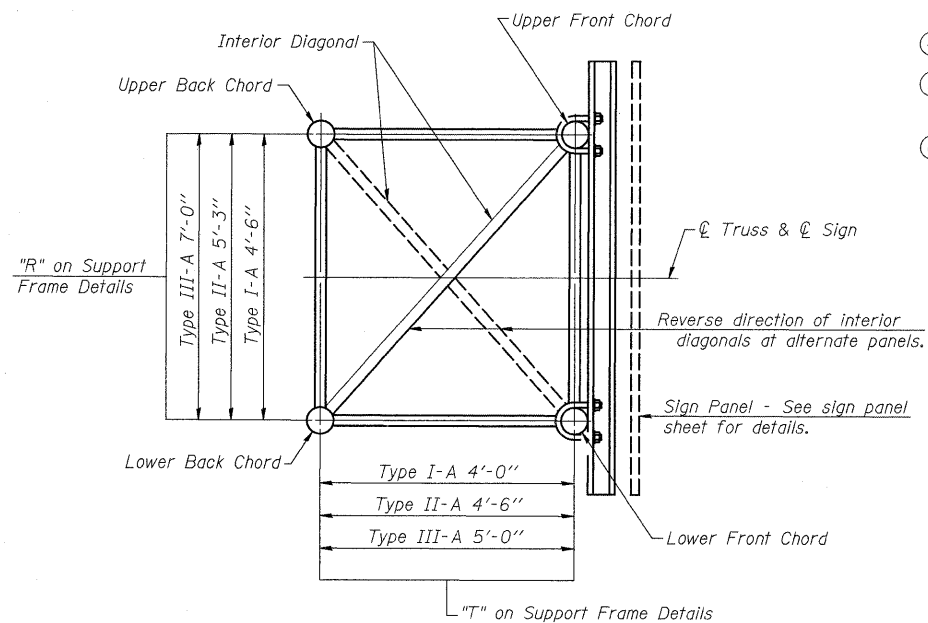


**TYPICAL JOINT DETAILS**

**DETAIL A**

**NOTES**

- ① Contractor may alternatively use standard aluminum drive-fit cap to close end. 1/2" Ø drain hole in end plate/drive-fit cap. (Typ. at ends of all chords)
- ② 5 1/2" end dimension may vary by ±1" to provide uniform panel spacing (P).
- ③ Panel spacing (P) shall be uniform for entire truss and between 4'-0" and 5'-0" for Type I-A or 4'-0" and 5'-6" for Types II-A and III-A.
- ④ Vertical Diagonals in front and back face shall alternate.
- ⑤ Hidden lines show wind bracing alternates direction between planes of top and bottom chords.
- ⑥ All diagonals shall be detailed for minimum offset from the panel point based on the following: Offset shall be such as to provide a 3/4" minimum to 1 1/2" maximum clearance between any diagonal and any horizontal or vertical member, and to provide clearance for U-bolt connections of signs or walkway brackets.



**SECTION A-A**

**OVERHEAD SIGN STRUCTURES  
ALUMINUM TRUSS DETAILS  
FOR TRUSS TYPES I-A, II-A and III-A**

SHEET NO. 2 OF 11

OS-A-2 5/16/08

DESIGNED	E. Mroczek
CHECKED	-
DRAWN	M. Balog
CHECKED	E. Mroczek



**Ciorba Group, Inc.**  
CONSULTING ENGINEERS  
5507 North Cumberland Avenue, Suite 402 Chicago, Illinois 60656  
Tel. 773.775.4009 Fax 773.775.4014 Email chicago@ciorba.com

NUMBER	REVISION	DATE

**STATE OF ILLINOIS  
DEPARTMENT OF TRANSPORTATION**

**SIGN STRUCTURE DETAILS**

FILE NAME =	USER NAME = grantpm	DESIGNED -	REVISED -	<b>SCALE:</b>	SHEET NO. OF SHEETS STA. TO STA.	F.A.I. RTE.	SECTION	COUNTY	TOTAL SHEETS	SHEET NO.	
or\pw_work\p1\dot\grantpm\dms34287\d0843\signstruo.dgn	13\signstruo.dgn	DRAWN -	REVISED -			80	(81-1R-1)	ROCK ISLAND	292	182	
PLOT SCALE = 5.0000' / IN.	PLOT DATE = Mon Dec 15 08:26:16 2008	CHECKED -	REVISED -			CONTRACT NO. 64933					
		DATE -	REVISED -			FED. ROAD DIST. NO. ILLINOIS FED. AID PROJECT					