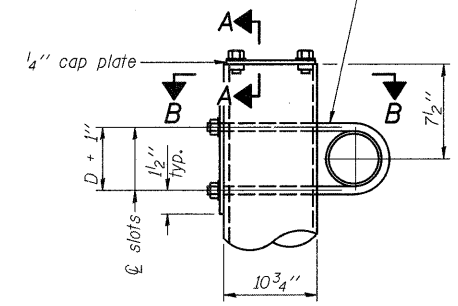
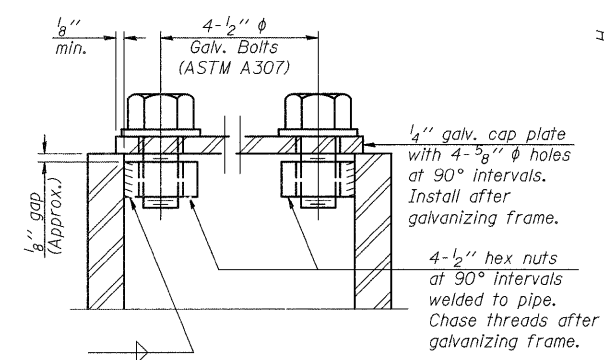


Mon Dec 15 08:26:19 2008 \$NAME\$

3/4" φ stainless steel U-bolt.  
Provide two washers and two hexagon locknuts. (4)  
1 5/16" x 2" slots on 10" φ pipe.  
(4 slots required per pipe)

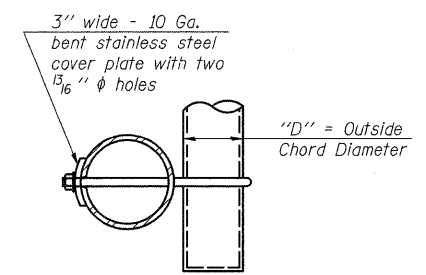


**DETAIL A**

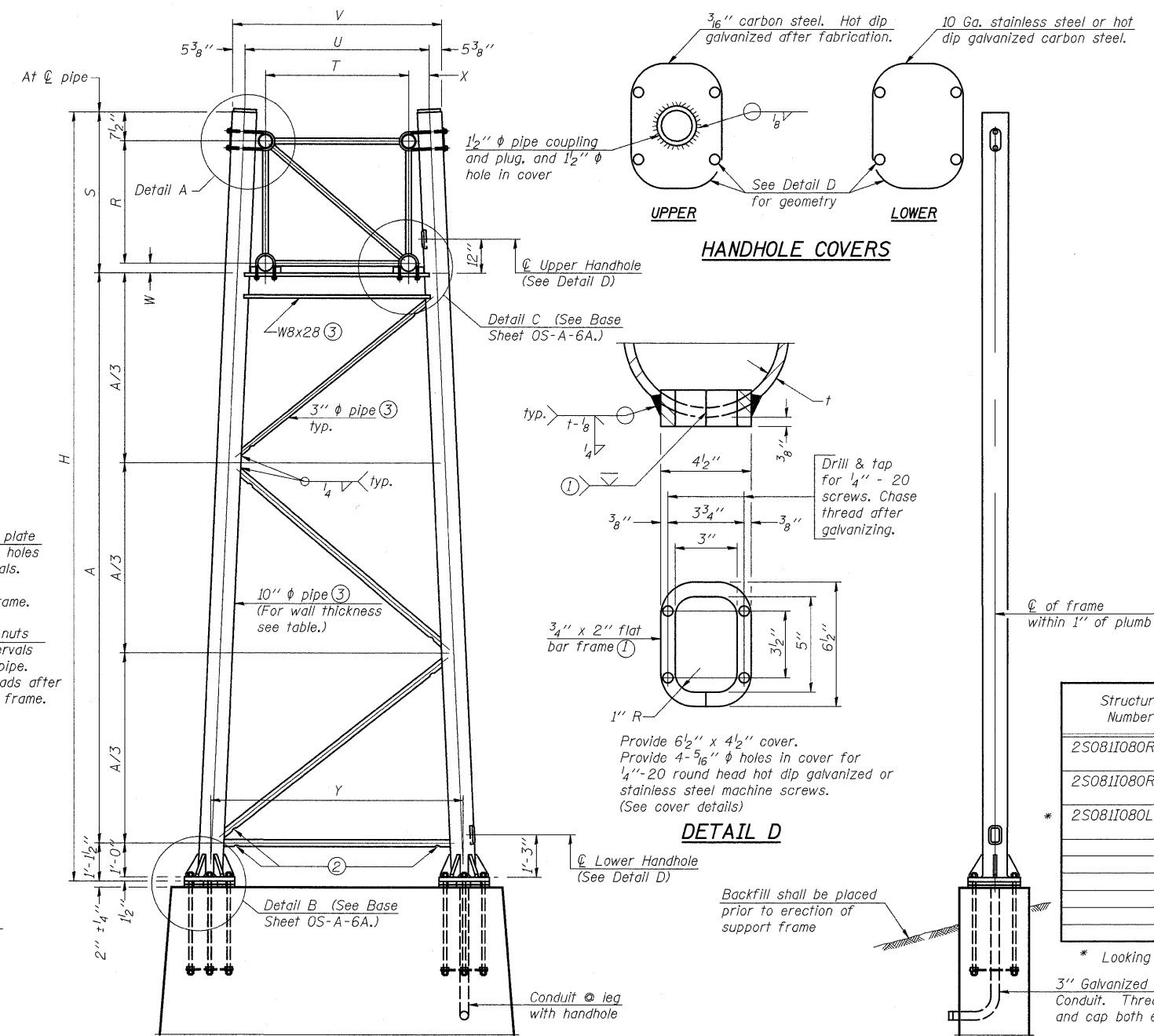


**SECTION A-A**

As an alternate to bolts, may use galvanized drive-fit caps installed after galvanizing frame.



**SECTION B-B**



For Foundation Details, see base sheet OS-F3 (Spread Footing) or OS4-F3 (Drilled Shaft).

**SIDE ELEVATION**

**END ELEVATION**

**10" φ PIPE TRUSS SUPPORT FRAME**

NUMBER	REVISION	DATE

Truss Type	Dimensions							
	R	S	T	U	V	W	X	Y
I-A	4'-6"	5'-5 1/2"	4'-0"	5'-6"	6'-4 3/4"	4"	9"	8'-3"
II-A (5)	5'-3"	6'-3 1/4"	4'-6"	6'-1"	6'-11 3/4"	4 3/4"	9 1/2"	8'-3"

Support Design Loads: See Base Sheet OS-A-1 for design and loading criteria.  
Load combinations checked include deadload plus:  
a) 100% wind normal to sign, 20% parallel to sign  
b) 60% wind normal to sign, 30% parallel to sign

- In lieu of fabricated handhole frame as shown, may cut from 2" plate (rolling direction vertical). All cut faces to be ground to ANSI Roughness of 500 μm or less.
- Galvanizing vent holes of adequate size shall be provided on underside at each end of bracing pipes. Alternately, holes may be provided in wall of pipe column. All vent holes shall be drilled and de-burred, typ.
- Steel pipe, plate, carbon steel handhole covers and rolled sections shall be hot dip galvanized after fabrication. Painting is not permitted. See Base Sheet OS-A-1.
- See General Notes for fasteners.
- Dimensions shown are based on selection criteria in the Sign Structures Manual. Nonstandard applications must have dimensions verified or amended as appropriate.
- "H" based on 15'-0" or actual sign height, whichever is greater.

Structure Number	Station	Support		Truss Type	Pipe Wall Thickness	H (6)	A
		Left	Right				
2S0811080R001.0	85+46.83	x		II-A	0.365	28' - 3 3/4"	20' - 11"
2S0811080R001.8	130+80.00	x	x	II-A	0.365	30' - 6"	23' - 1 1/4"
2S0811080L002.3	155+45.12	x		II-A	0.365	27' - 4 1/2"	19' - 11 3/8"
			x	I-A	0.279	30' - 6"	23' - 1 1/4"
			x	I-A	0.365	26' - 1"	19' - 6"
						31' - 6"	24' - 11"

\* Looking at Face of signs

OS-A-6 5/16/08

DESIGNED	E. Mroczek
CHECKED	-
DRAWN	M. Balog
CHECKED	E. Mroczek

**CG** Ciorba Group, Inc.  
CONSULTING ENGINEERS  
5507 North Cumberland Avenue, Suite 402 Chicago, Illinois 60656  
Tel. 773.775.4009 Fax 773.775.4014 Email chicago@ciorba.com

**OVERHEAD SIGN STRUCTURES  
SUPPORT FRAME for ALUMINUM TRUSS**

SHEET NO. 5 OF 11