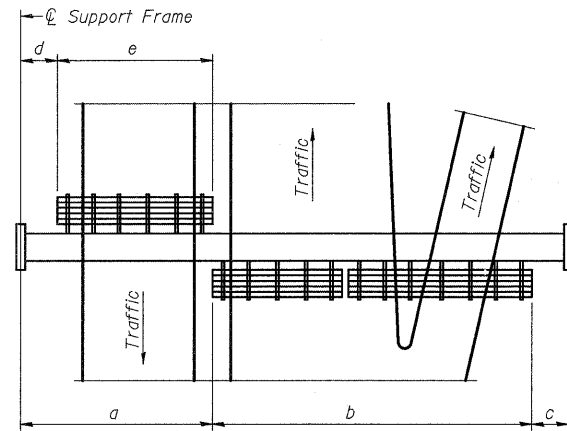


NUMBER	REVISION	DATE



PLAN WALKWAY AND HANDRAIL SKETCH
(Road plan beneath truss varies)

BRACKET TABLE

Sign Width		Number Brackets Required
Greater Than	Less Than or Equal To	
8'-0"	8'-0"	2
8'-0"	14'-0"	3
14'-0"	20'-0"	4
20'-0"	26'-0"	5
26'-0"	32'-0"	6

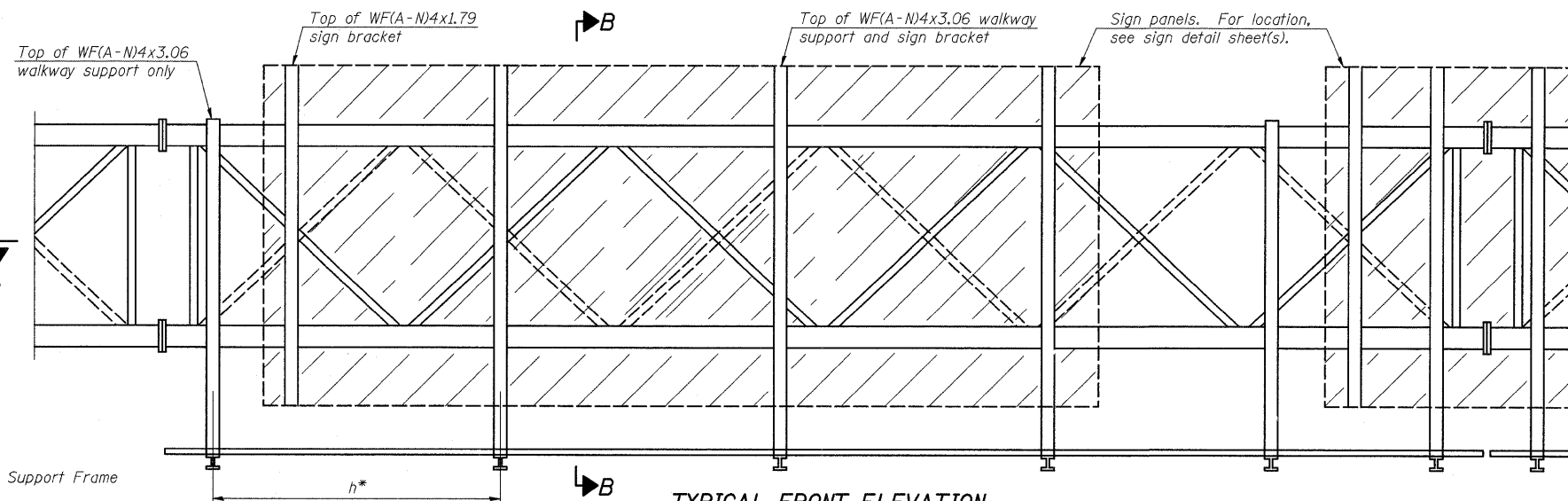
Notes:

* Space walkway brackets WF(A-N)4x3.06 and sign brackets WF(A-N)4x1.79 for efficiency and within limits shown:

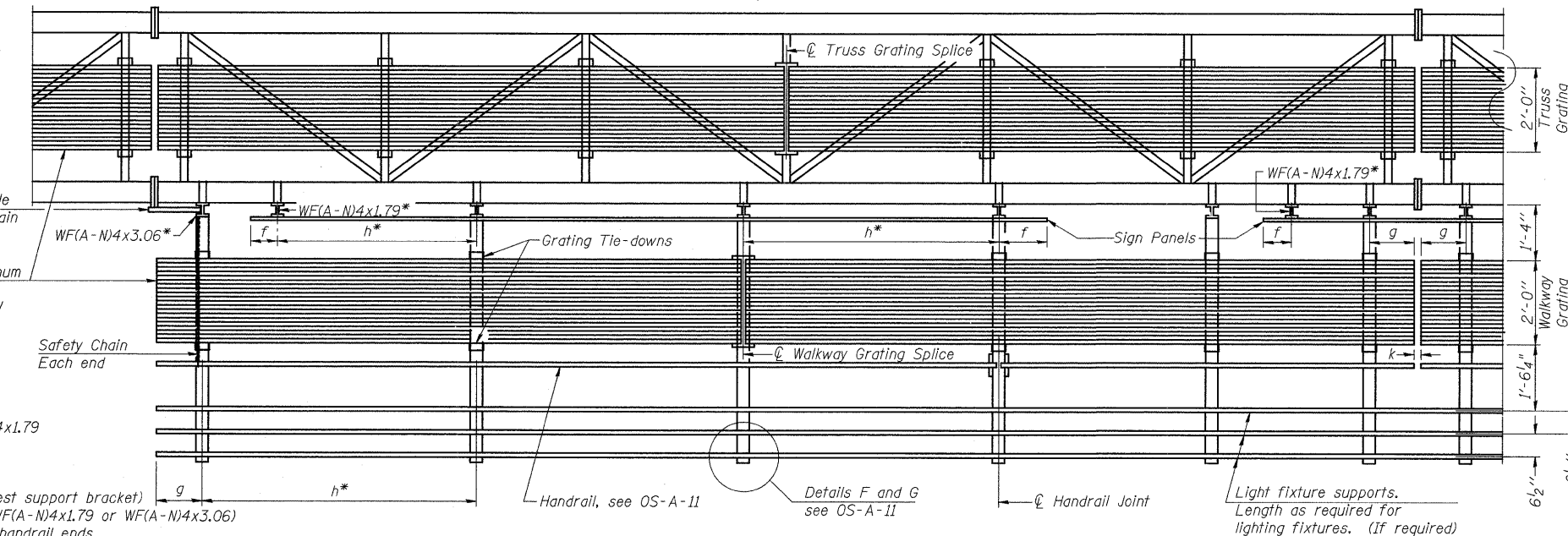
f = 12" maximum, 4" minimum (End of sign to center of nearest bracket)
g = 12" maximum, 4" minimum (End of walkway grating to center of nearest support bracket)
h = 6'-0" maximum (center to center of sign and/or walkway support brackets, WF(A-N)4x1.79 or WF(A-N)4x3.06)
k = 2" maximum gap between adjacent walkway grating sections and handrail ends

** If walkway bracket at safety chain location is behind sign, add angle to bracket, see Alternate Safety Chain Attachment on Base Sheet OS-A-11.

For Details T and W, Section B-B and Grating Splice Details see Base Sheet OS-A-10.
For Handrail Details see Base Sheet OS-A-11.



TYPICAL FRONT ELEVATION
With lights and handrail omitted for clarity.
For Section B-B, see Base Sheet OS-A-10.



SECTION A-A

Handrail and walkway shall span a minimum of three brackets between splices and/or gap joints. Place all sign and walkway brackets as close to panel points as practical. Handrail joints, grating, and light support splices placed as needed.

Truss grating to facilitate inspection shall run full length (center to center of support frames) ±12" on overhead trusses. Cost of truss grating is included in "Overhead Sign Structure".

Walkway and Truss Grating width dimensions are nominal and may vary ±1/2" based on available standard widths.

Structure Number	Station	a	b	c	d	e	Walkway Grating and Handrail Lengths
2S0811080R001.0	85+46.83	32' - 0"	46' - 0"	20' - 0"			46' - 0"
2S0811080R001.8	130+80.00	36' - 9"	36' - 2"	31' - 1"			36' - 2"
*** 2S0811080L002.3	155+45.12	36' - 0"	32' - 0"	26' - 0"			32' - 0"

*** Looking at Face of Signs

OS-A-9 5/16/08

DESIGNED E. Mroczek
CHECKED -
DRAWN M. Balog
CHECKED E. Mroczek



Ciorba Group, Inc.
CONSULTING ENGINEERS
5507 North Cumberland Avenue, Suite 402 Chicago, Illinois 60656
Tel. 773.775.4009 Fax 773.775.4014 Email chicago@ciorba.com

OVERHEAD SIGN STRUCTURES ALUMINUM WALKWAY DETAILS

SHEET NO. 7 OF 11

FILE NAME =	USER NAME = grantpm	DESIGNED -	REVISED -	STATE OF ILLINOIS DEPARTMENT OF TRANSPORTATION	SIGN STRUCTURE DETAILS	F.A.I. RTE. 80	SECTION (B1-1)R-1	COUNTY ROCK ISLAND	TOTAL SHEETS 292	SHEET NO. 187	
CONTRACT NO. 64933	PLOT SCALE = 5/8" = 1' / IN.	DRAWN -	REVISED -			SCALE:	SHEET NO. OF SHEETS STA. TO STA.	FED. ROAD DIST. NO.	ILLINOIS FED. AID PROJECT		
	PLOT DATE = Mon Dec 15 08:26:21 2008	CHECKED -	REVISED -								
		DATE -	REVISED -								