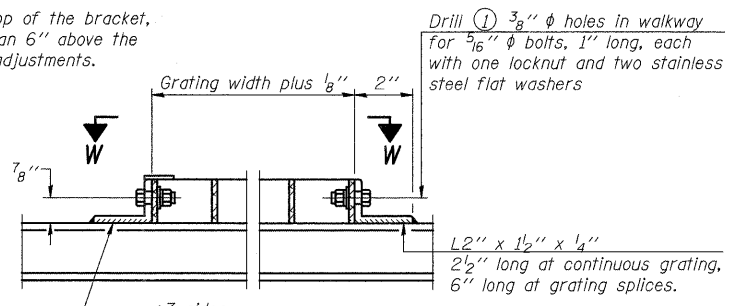
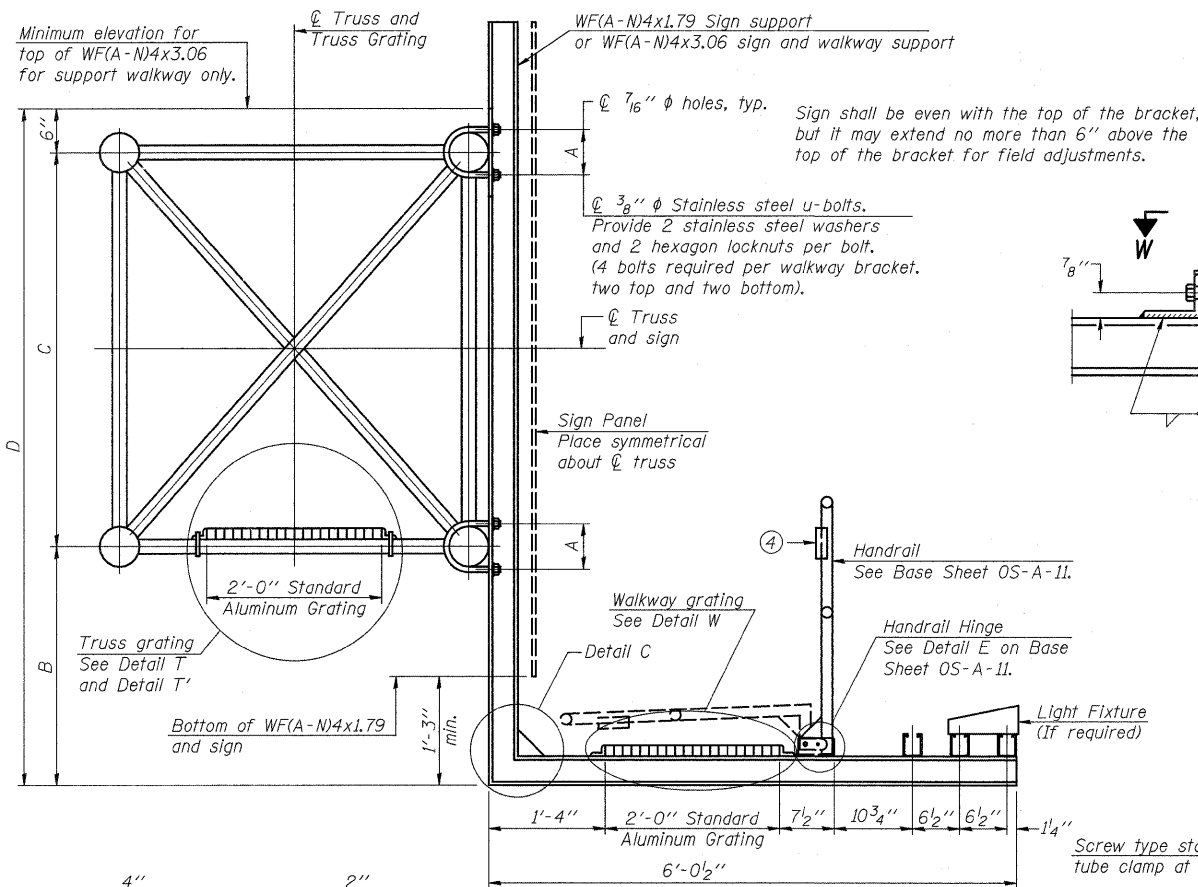
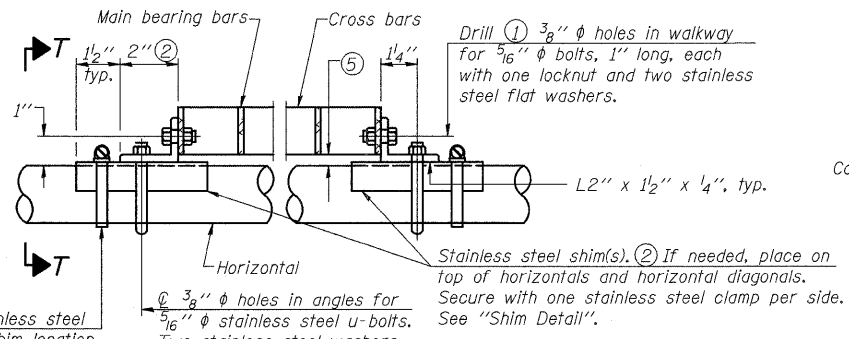


Mon Dec 15 08:26:22 2008 \$NAME\$



DETAIL W
(Walkway grating)



DETAIL T
(Continuous Truss grating)

SPECIFICATIONS FOR STANDARD ALUMINUM GRATING

Main Bearing Bars shall be 3/16" x 1 1/2" on 1 3/16" centers and conform to ASTM B221 Alloy 6061-T6.

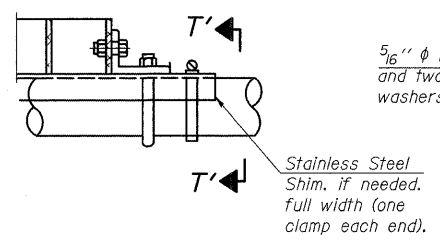
Cross bars shall be 3/16" x 1 1/2" on 4" centers and conform to ASTM B221 Alloy 6063-T5 or 6061-T6.

OR

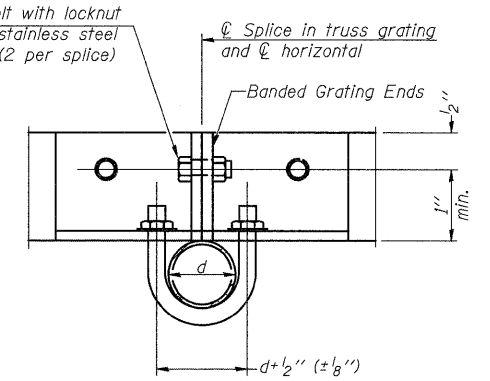
Aluminum Grating with modified "4" sections for main bearing bars shall meet the following requirements:

Main bars shall conform to ASTM B221 Alloy 6061-T6 and have a minimum section modulus equal to 0.0705 in.³ per bar, a depth of 1 1/2", spaced on 1 3/16" centers.

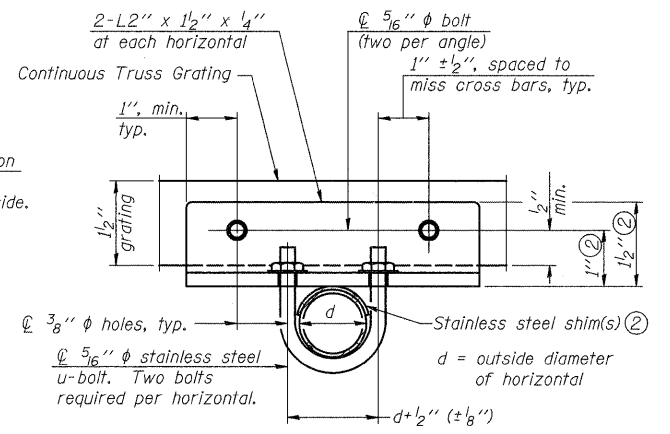
Cross bars shall conform to ASTM B221 Alloy 6063-T5 or T-42 and spaced on 4" centers.



DETAIL T'
(Truss grating splice)

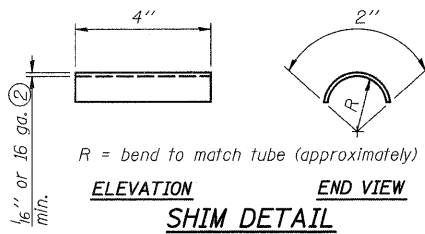


SECTION T'-T'

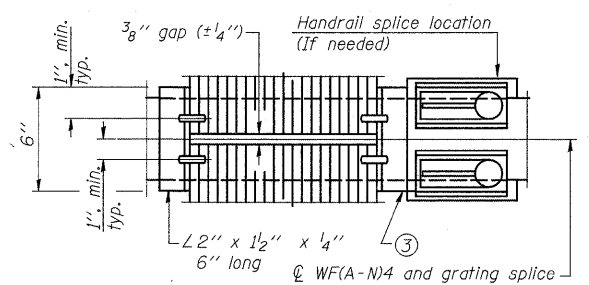


SECTION T-T

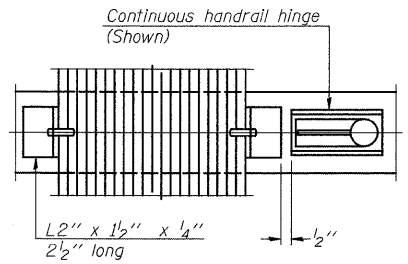
- ① Drilling holes in grating may be done in shop or field, based on Contractor's preference and subject to accurate alignment.
- ② Stainless steel shims shall be placed as shown in Detail T if needed to compensate for alignment variations between horizontal and diagonal pipes beyond adjustment provided by angles. Thicker shims may be used subject to shims performing properly.
- ③ If Handrail Joint present, weld angle to WF(A-N)4 and 1/4" extension bars. (See Base Sheet OS-A-II.)
- ④ 1/8" x 1/2" x 2" welded to handrail posts to protect locations that contact grating.
- ⑤ Tube to grating gap may vary from 0 to 1/2", max. to align walkway, allow for camber, etc.



SECTION B-B

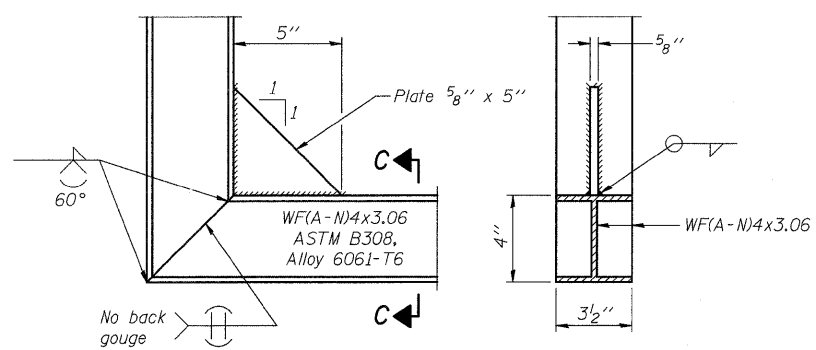


(AT WALKWAY GRATING SPLICE)



SECTION W-W

SECTION C-C



DETAIL C

OS-A-10 5/16/08

DESIGNED	E. Mroczek
CHECKED	-
DRAWN	M. Balog
CHECKED	E. Mroczek

Giorga Group, Inc.
CONSULTING ENGINEERS
5507 North Cumberland Avenue, Suite 402 Chicago, Illinois 60656
Tel. 773.775.4009 Fax 773.775.4014 Email chicago@giorga.com

NUMBER	REVISION	DATE

Structure Number	Station	A	B	C	D
2S0811080R001.0	85+46.83	6 1/2"	6' - 10 1/2"	5' - 3"	12' - 7 1/2"
2S0811080R001.8	130+80.00	7"	6' - 10 1/2"	5' - 3"	12' - 7 1/2"
2S0811080L002.3	155+45.12	6"	6' - 3"	4' - 6"	11' - 3"

**OVERHEAD SIGN STRUCTURES
ALUMINUM WALKWAY DETAILS**

SHEET NO. 8 OF 11