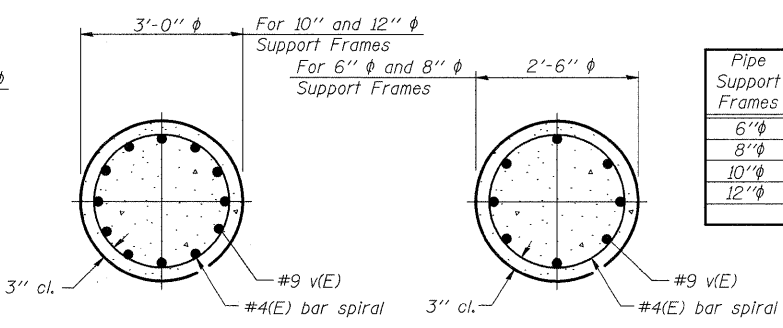
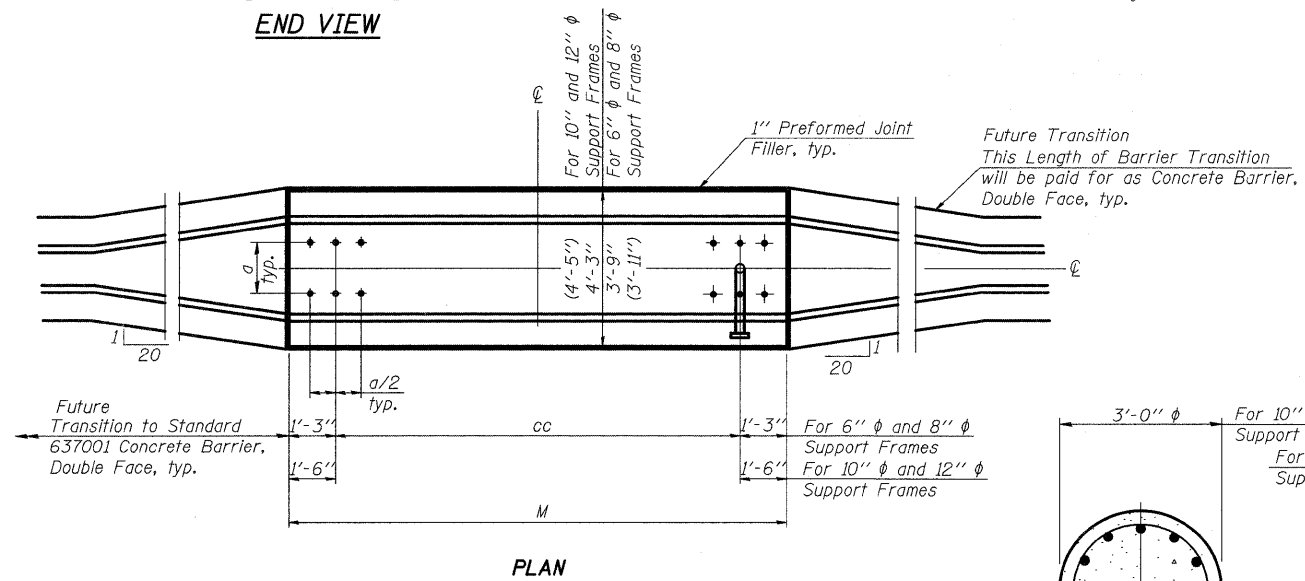
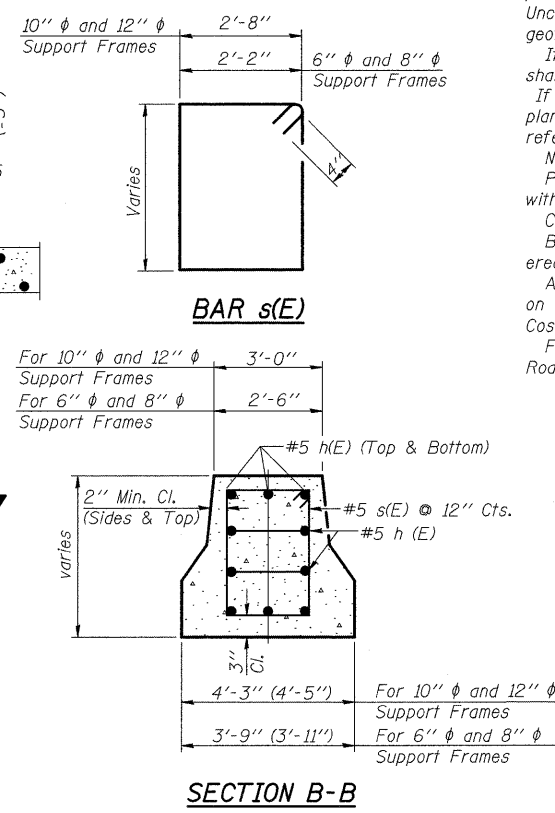
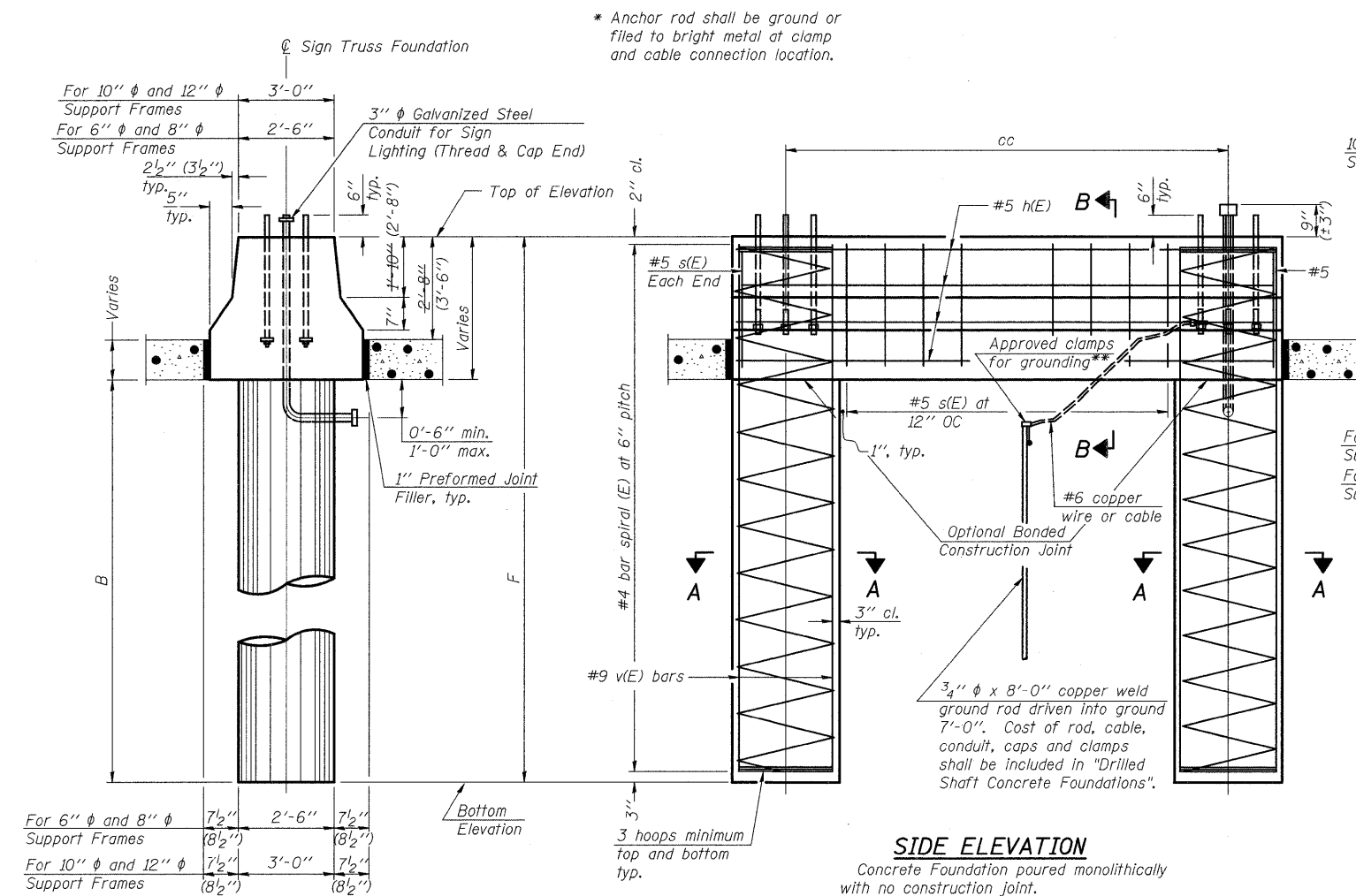


Mon Dec 15 08:26:25 2008 \$NAME\$



Pipe Support Frames	cc	M	a	a/2
6"φ	7'-0"	9'-6"	0'-11"	5 1/2"
8"φ	7'-6"	10'-0"	1'-1 1/2"	6 3/4"
10"φ	8'-3"	11'-3"	1'-3"	7 1/2"
12"φ	9'-0"	12'-0"	1'-6"	9"

**NOTES:**  
 The foundation dimensions shown are based on the soil boring logs determined by previous soil investigations at the jobsite and on a site specific design. The average Unconfined Compression Strength (Qu) assumed for the design based on the available geotechnical data is specified in Table A. See Sheet No. 10.  
 If the conditions encountered are different than those indicated, the Contractor shall notify the Engineer to determine if the foundation dimensions need to be modified. If dimensions "B" or "F" are revised by more than 12" by the Contractor, "as-built" plans shall be prepared and submitted to the District Bureau of Operations for future reference.  
 No sonotubes or decomposable forms shall be used below the lower conduit entrance. Permanent metal forms or other shielding may not be left in place below that elevation without the Engineer's written permission.  
 Concrete shall be placed monolithically, without construction joints.  
 Backfill shall be placed per Article 502 of Standard Specification and prior to erection of support column.  
 A normal surface finish followed by a Bridge Seat Sealer application will be required on concrete surfaces above the lowest elevation 6" below finished ground line. Cost included in Drilled Shaft Concrete Foundation.  
 For boring logs see sheets 12 thru 15. For sign structure and boring locations see Roadway plans.

**BAR LIST - EACH FOUNDATION**

Bar	Number	Size	Length	Shape
h(E)	10	#5	M less 4"	—
s(E)	6	#5	Varies	□
v(E)	16	#9	F less 0'-5"	—
v(E)	24	#9	F less 0'-5"	—
#4(E) bar spiral - see Side Elevation				

All dimensions in parenthesis are for 42" high barrier.

Structure Number	Station	Left Foundation				Right Foundation				Class SI Concrete (Cu. Yds.)	Reinforcement Bars, Epoxy Coated (Pound)
		Elevation Top	Elevation Bottom	B	F	Elevation Top	Elevation Bottom	B	F		
2S0811080R001.0	85+46.83	696.89	654.39	38'-0"	42'-6"					26.5	4,600
2S0811080R001.8	130+80.00	689.87	647.87	37'-6"	42'-0"					26.3	4,550
2S0811080L002.3	155+45.12	693.22	654.72	34'-0"	38'-6"					24.4	4,190

\*\*\* Looking at Face of signs

OS4-MED 5/16/08

DESIGNED	E. Mroczek
CHECKED	-
DRAWN	M. Balog
CHECKED	E. Mroczek

**Ciorba Group, Inc.**  
 CONSULTING ENGINEERS  
 5507 North Cumberland Avenue, Suite 402 Chicago, Illinois 60656  
 Tel. 773.775.4009 Fax 773.775.4014 Email chicago@ciorba.com

**OVERHEAD SIGN STRUCTURES  
 MEDIAN SUPPORT FOUNDATION DETAILS**

SHEET NO. 11 OF 11